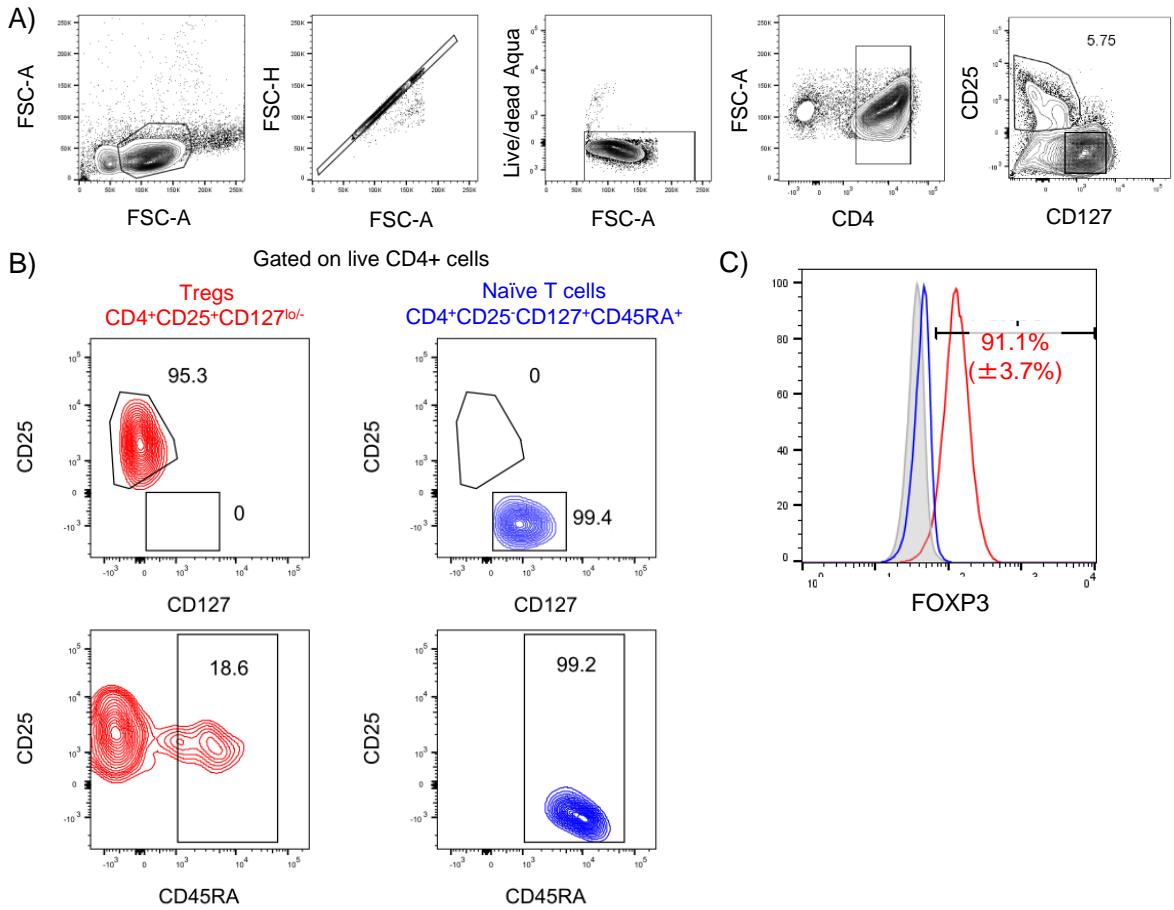


S1 Fig. Sorting strategy for ex vivo Tregs and naïve T conventional cells



**S1 Fig.** Healthy donor PBMCs obtained by leukapheresis were enriched for CD4<sup>+</sup> T cells followed by FACS sorting. (A) Gating strategies to sort CD4<sup>+</sup>CD25<sup>+</sup>CD127<sup>lo/-</sup> Tregs and CD4<sup>+</sup>CD25<sup>-</sup>CD127<sup>+</sup>CD45RA<sup>+</sup> naïve T conventional cells. (B) Purity of post sorted Tregs (red) and naïve T conventional cells (blue) were typically more than 95%. (C) Representative histogram shows FOXP3 expression of both Tregs and naïve T conventional cells with isotype matched control staining (grey filled).