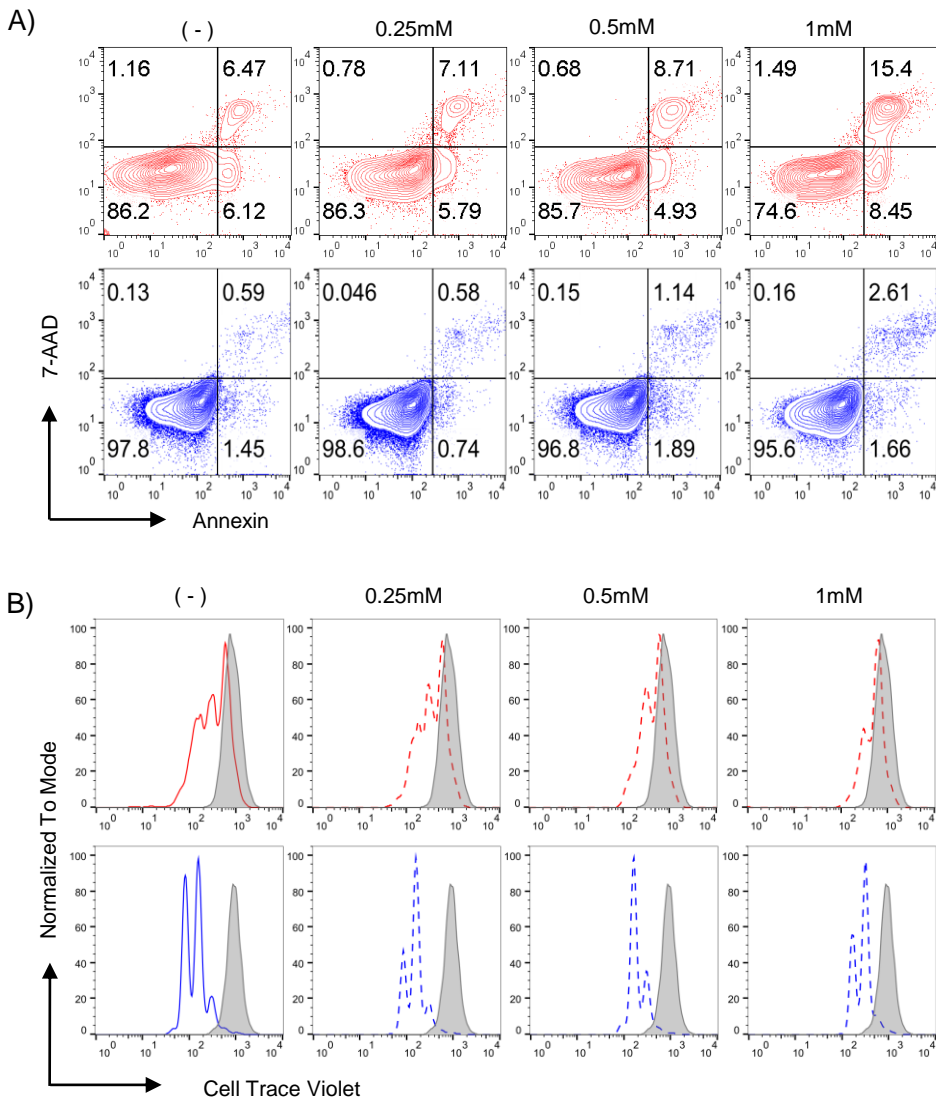


S3 Fig. Effect of dose titration of 2DG on survival and proliferation in Treg subsets



S3 Fig. tTreg (red) and iTReg (blue) culturing performed with the indicated dose of 2-deoxy-D-glucose. Cell survival and proliferating status were analyzed at day3 post activation by Annexin-7AAD and cell tracer dilution assay, respectively. Representative data is shown from 2 independent experiments.