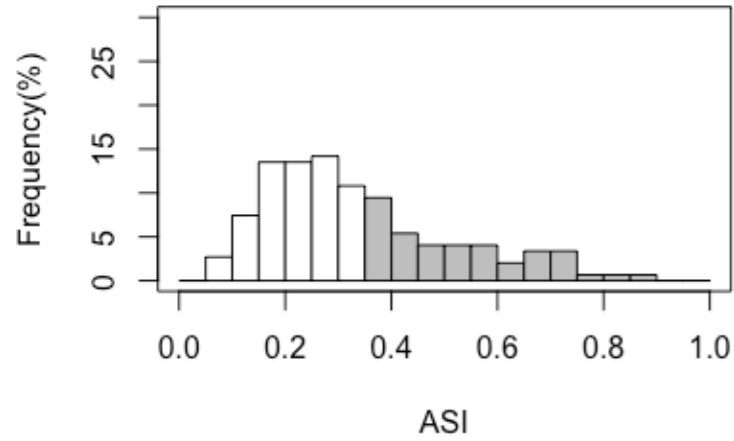


# UAS-Par3

(exp.1)

pDA-Par3



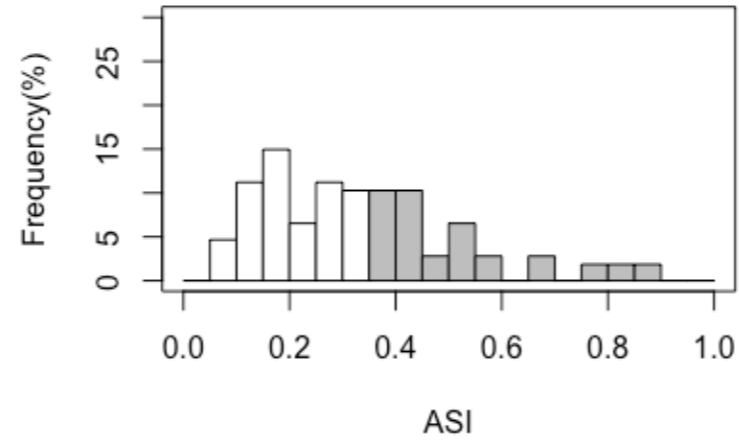
n=148

mean = 0.34, sd = 0.18

(ASI>0.35 mean = 0.52, sd = 0.14)

(exp.2)

pDA-Par3



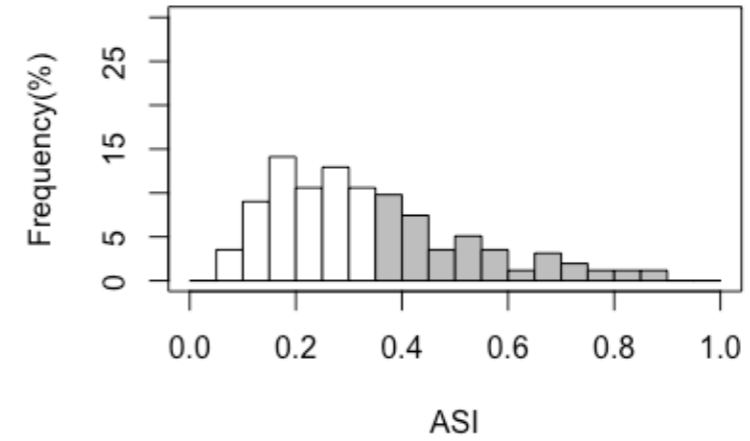
n=107

mean = 0.33, sd = 0.19

(ASI>0.35 mean = 0.52, sd = 0.15)

(exp.1 + exp.2)

pDA-Par3



n=255

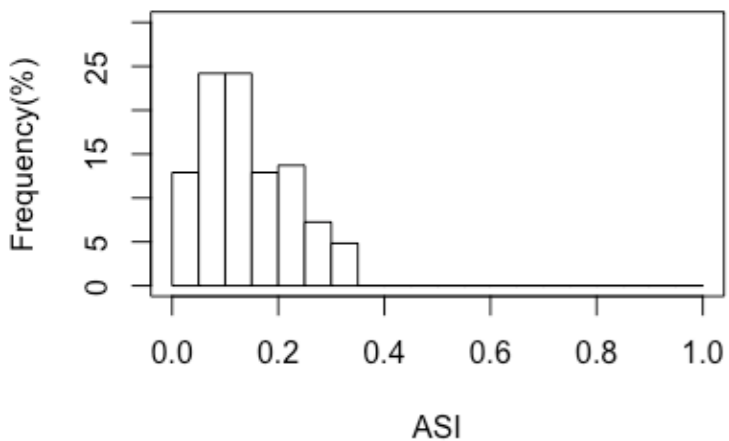
mean = 0.34, sd = 0.18

(ASI>0.35 mean = 0.52, sd = 0.14)

# UAS-Membrane

(exp.1)

membrane

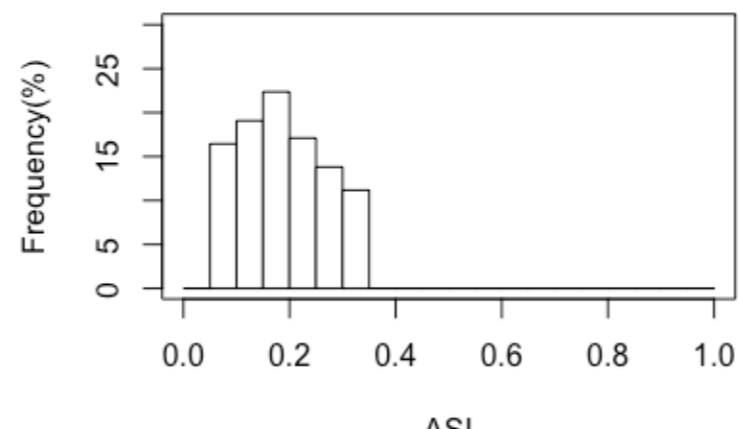


n=124

mean = 0.14, sd = 0.08

(exp.2)

membrane

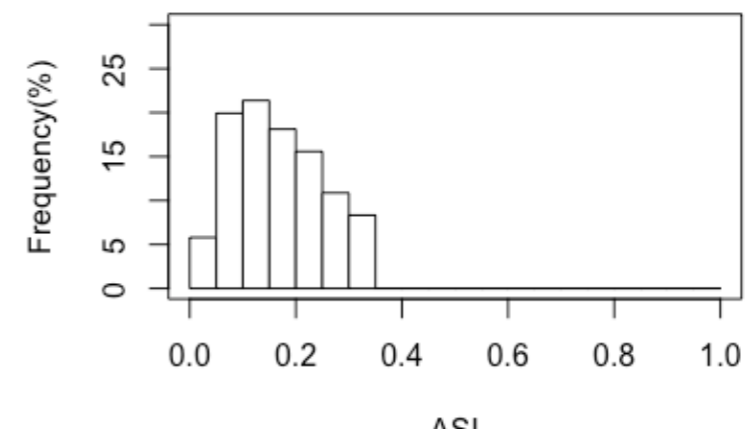


n=152

mean = 0.19, sd = 0.08

(exp.1 + exp.2)

membrane



n=276

mean = 0.17, sd = 0.08

UAS-Par3 vs. UAS-membrane

ks.test <  $2.2 \times 10^{-16}$

Wilcox.test <  $x10^{-16}$