

## Supplementary Information

Supplementary Figure 1

Supplementary Data Table 1

Supplementary Notes

### Supplementary Figure 1

Uncropped scans with size markers.

### Supplementary Table 1

**Results of haploid genetic screen for ANDV entry.** The number of mutations retrieved from HAP1 cells selected with rVSV-ANDV Gn/Gc was compared per gene to a dataset of unselected HAP1 cells. A one-sided Fisher's exact test was used to gauge the enrichment of mutations in a selected versus the unselected population. P-values are false discovery rate (FDR)-corrected. Please see associated Excel file.

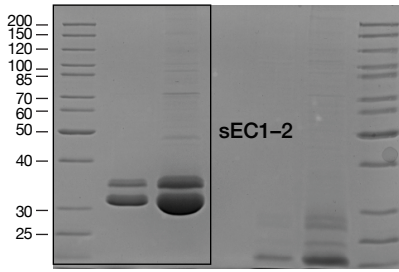
### Supplementary Notes

This work is supported by NIH grants AI101436 (to K.C.), AI132633 (to K.C., J.M.D., and Z.W.), AI125462 (to J.R.L.), and JSTO-DTRA project CB3948 (to J.M.D.). T.R.B. was supported by NWO Vici Grant 016.Vici.170.033, the Cancer Genomics Center (CGC.nl), and the Ammodo KNAW Award 2015 for Biomedical Sciences. F.A.R. received funding from “Integrative Biology of Emerging Infectious Diseases” Labex (Laboratoire d’Excellence) grant ANR-10-LABX-62-IBEID (French government’s “Investissements d’Avenir” program). S.S.S. and S.L.B. were supported by funds from the Canadian Institutes of Health Research (MOP-136944). N.T. was supported by funding from CONICYT (Chile) grants Fondo Nacional de Desarrollo Científico y

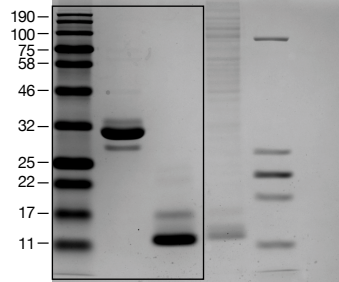
Tecnológico FONDECYT 1181799 and Programa de Apoyo a Centros con Financiamiento Basal AFB 170004 to Fundación Ciencia & Vida. K.C. was additionally supported by an Irma T. Hirschl/Monique Weill-Caulier Research Award. L.M.K., M.M.S., and S.B. were additionally supported by NIH T32 training grants GM007491, AI070117, and AI007501, respectively. N.A.M. was additionally supported by a CONICYT doctoral fellowship. F.A.R acknowledges support from the Infect-ERA IMI European network, program “HantaHunt.” The Einstein Histopathology Core acknowledges support from NCI center grant P30CA013330.

Supplementary Figure 1: Uncropped scans with size markers.

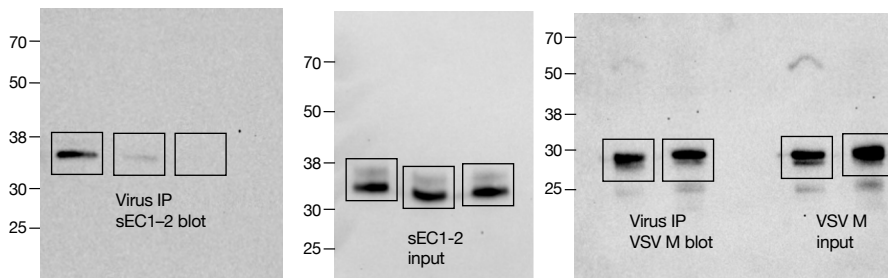
Ext Fig. 3a



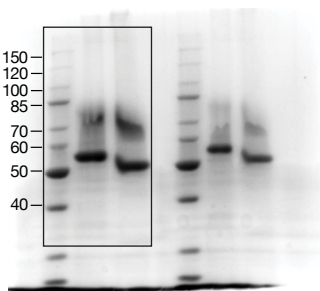
Ext Fig. 3c



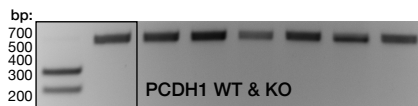
Ext Fig.7d



Ext Fig. 8a



Ext Fig. 10b



Ext Fig. 10d

