

HIF-1-VEGF-Notch and TMJ-OA

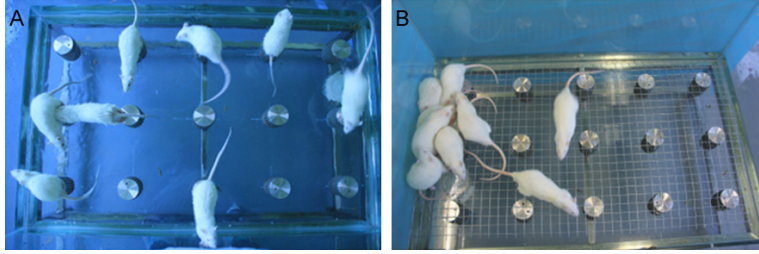


Figure S1. The experimental tank contained 15 small platforms for SD groups (A) or a grid for CN groups (B). (A) The rats on the small platforms could jump from one to another, but when they reached the paradoxical phase of sleep, their faces would touch the water as the muscle atonia. Thus, the rats in the small platforms suffered from sleep deprivation continuously, (B) the rats on the grid could lie down and sleep despite their tails might touch the water.

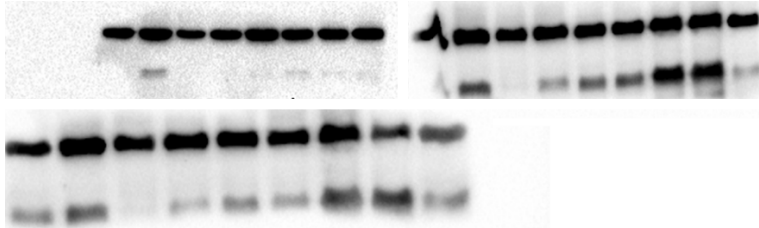


Figure S2. Representative original western images for β -actin including the whole membranes in rats experiment.

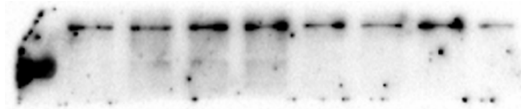


Figure S3. Representative original western images for Notch including the whole membranes in rats experiment.



Figure S4. Representative original western images for β -actin including the whole membranes in cell experiment.

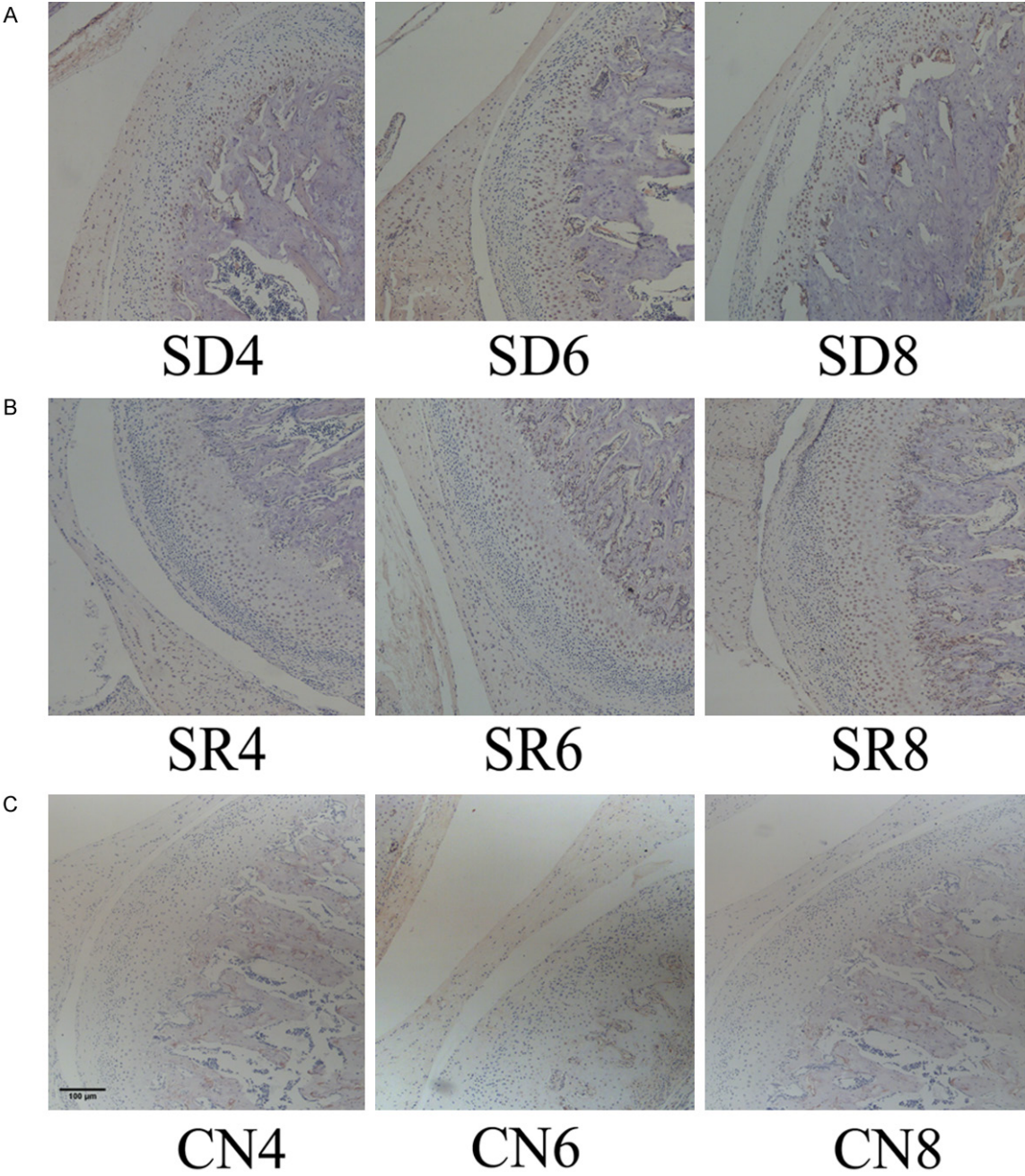


Figure S5. Representative images of immunohistochemistry staining for HIF-1 α in the CN, SD SR groups respectively.

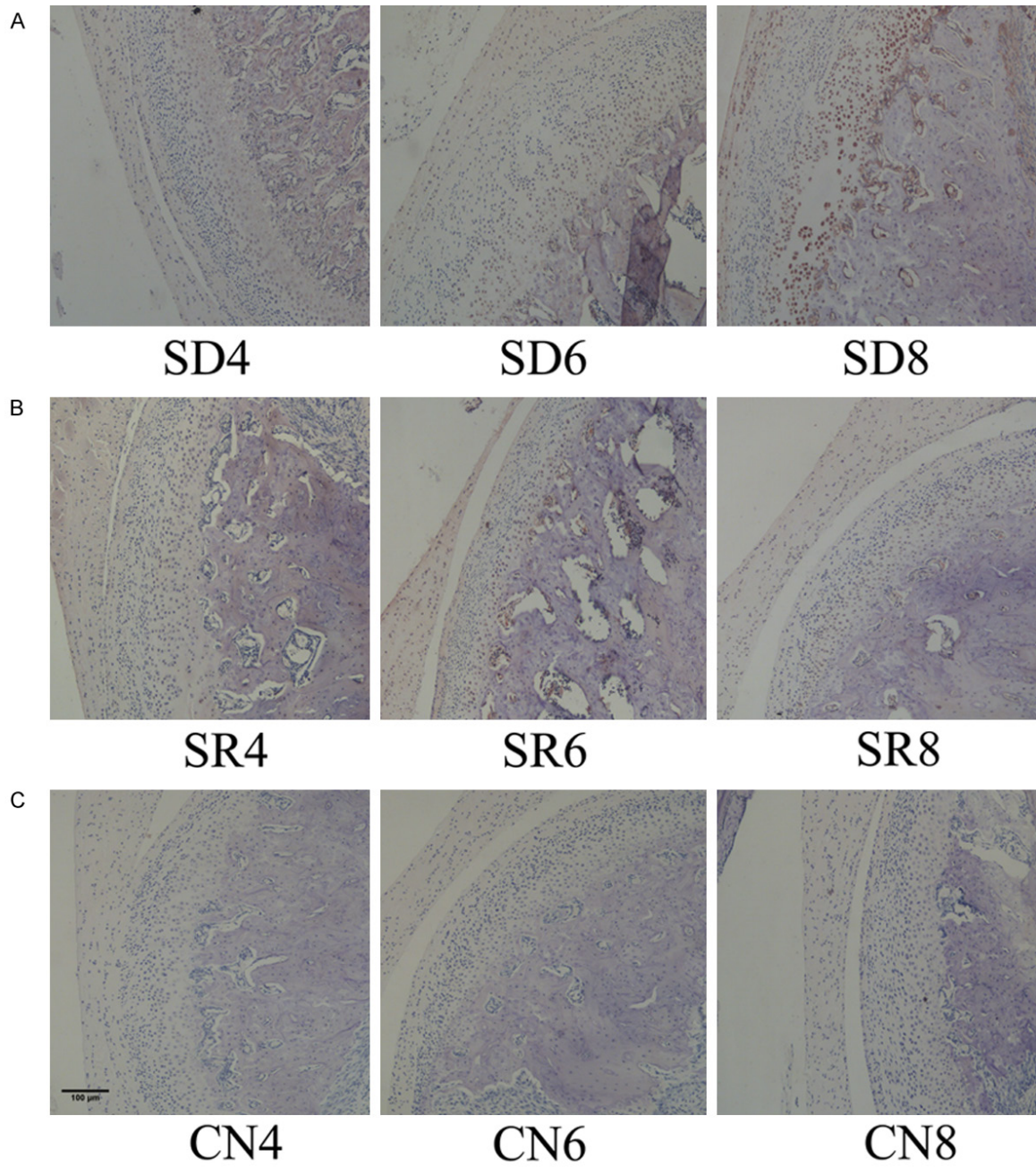


Figure S6. Representative images of immunohistochemistry staining for NICD in the CN, SD SR groups respectively.

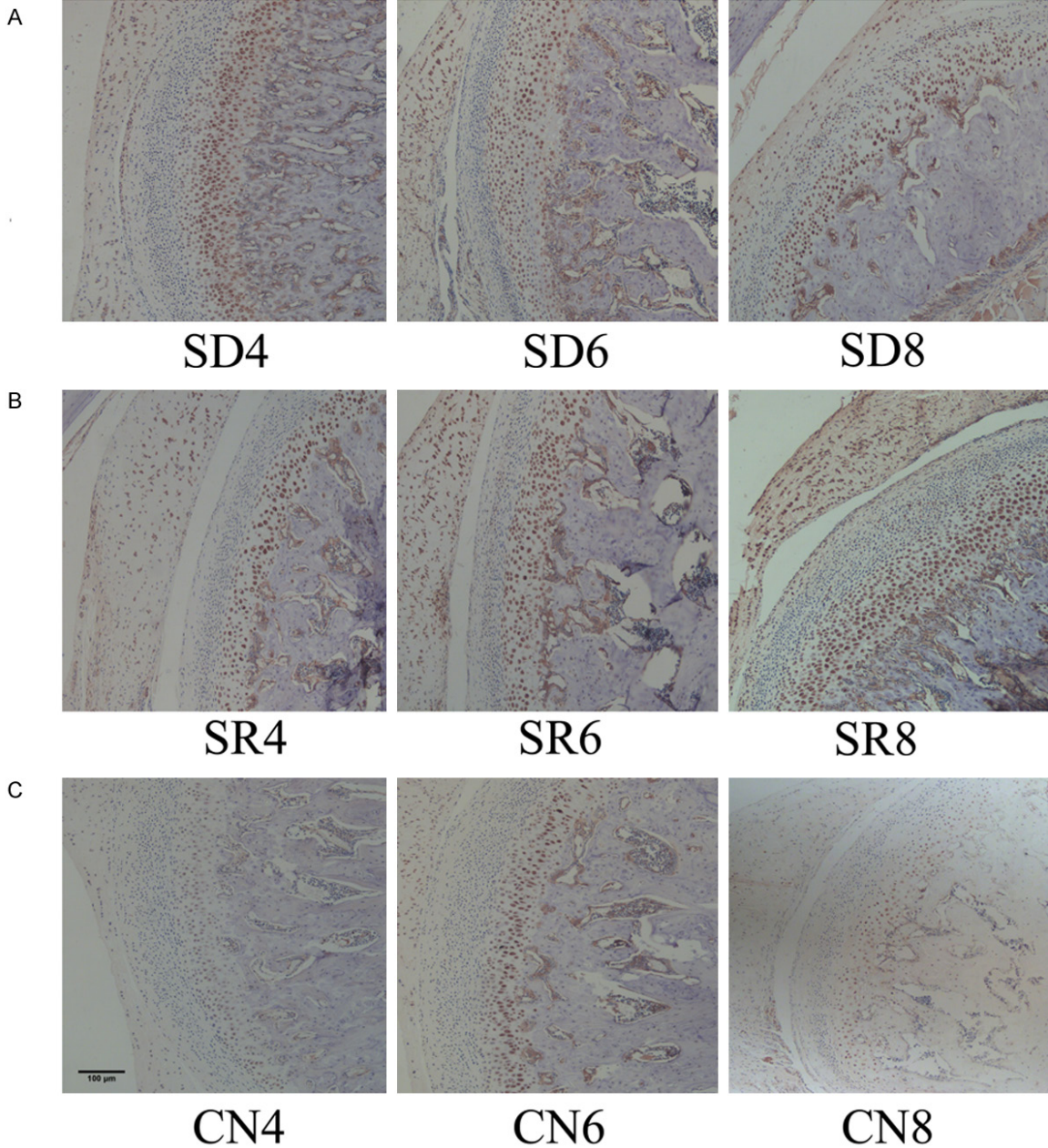


Figure S7. Representative images of immunohistochemistry staining for VEGF in the CN, SD SR groups respectively.