

Evolution over time of hydration status and PD related practice patterns in an incident peritoneal dialysis patient cohort

Wim Van Biesen, Christian Verger, James Heaf, François Vrtovsnik, Zita Leme Britto, Jun-Young Do, Mario Prieto Velasco, Juan Pérez Martínez⁸, Carlo Crepaldi, Tatiana De los Ríos, Adelheid Gauly, Katharina Ihle, Claudio Ronco for the IPOD-PD Study Group

Supplemental Table 1: Inclusion and exclusion criteria

Supplemental Table 2: Documented parameters by visit

Supplemental Figure 1: Flow diagram of the analysis population

Supplemental Figure 2: Course of systolic (A) and diastolic (B) blood pressure.

Supplemental Figure 3: Course of GFR during the study

Supplemental Figure 4: Course of 24-hr urine output during the study

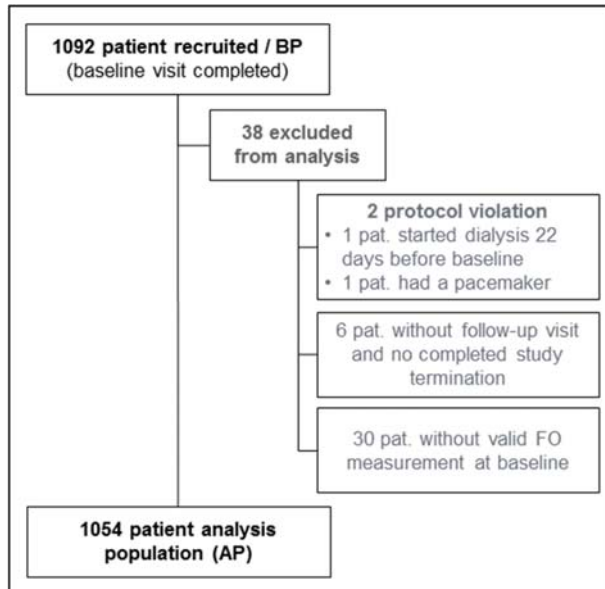
Supplemental Table 3: Inclusion and exclusion criteria

Inclusion criteria	<ul style="list-style-type: none">- CKD patients with indication for renal replacement therapy- Incident patients who chose peritoneal dialysis, directly before the start of first peritoneal dialysis- Patients in whom routine measurement of BCM is possible- Patients with at least 18 years of age- Written informed consent to study participation and data submission
Exclusion criteria	<ul style="list-style-type: none">- Patients treated with HD before start of PD- Patients who have any condition which prohibit the use of BCM: implanted electronic medical device (e.g. a pacemaker) or connected to an external electronic medical device- Any kind of metal implants or metal artificial joints (Dental implants or piercings are allowed)- Patients with major amputations (e.g. lower leg)- Pregnant women

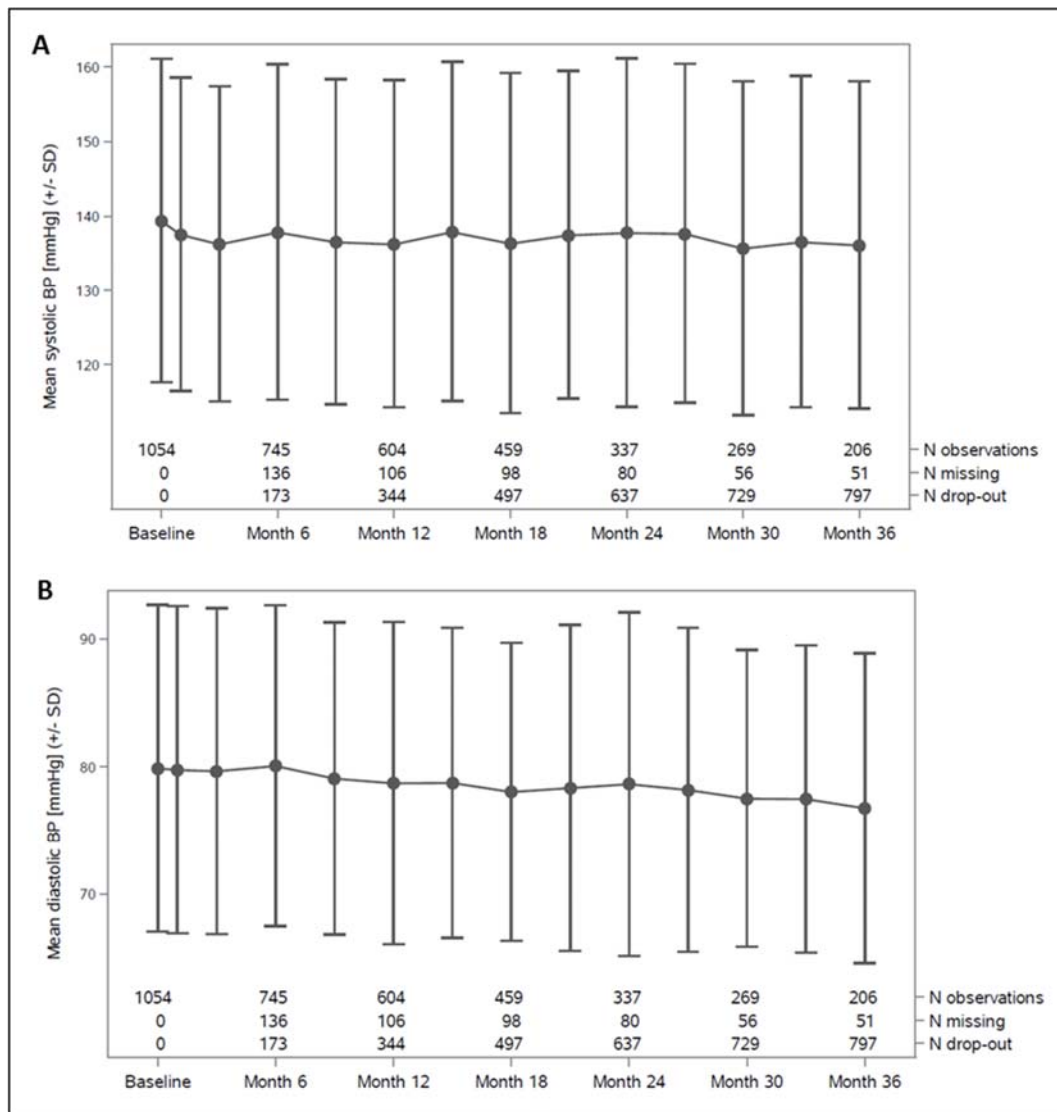
Supplemental Table 4: Documented parameters by visit

Baseline visit	Follow-up visits	Termination
<u>Inclusion and exclusion criteria at patient inclusion</u>		
<u>Date of visit</u>	<u>Date of visit</u>	<u>Date of study termination</u>
<u>Baseline data</u> - Demography - Anamnesis		
<u>Laboratory</u> - Haemoglobin - Haematocrit - Albumin - CRP - Glucose - HbA1c - Urea/BUN - Serum creatinine	<u>Laboratory</u> - Haemoglobin - Haematocrit - Albumin - CRP - Glucose - HbA1c - Urea/BUN - Serum creatinine	
<u>Patient status</u> - Office blood pressure - Residual renal function	<u>Patient status</u> - Office blood pressure - Residual renal function: - Weekly peritoneal Kt/V - Peritoneal membrane transport status, assessed according to test routinely performed in the centre - Mean daily ultrafiltration	
<u>Hydration status</u> - 5-step score according to medical judgement - Body composition data (BCM) - Estimated body weight at euvolaemia	<u>Hydration status</u> - 5-step score according to medical judgement - Body composition data (BCM) - Estimated body weight at euvolaemia	<u>Hydration status</u> , if possible at the moment of cessation of PD therapy - 5-step score according to medical judgement - Body composition data (BCM) - Estimated body weight at euvolaemia
<u>PD prescription at start of dialysis</u> - PD modality: CAPD or APD - Number of exchanges - Dwell duration - Buffer - Osmotic agent - Glucose concentration	<u>Changes in PD prescription</u> - PD modality: CAPD or APD - Number of exchanges - Dwell duration - Buffer - Osmotic agent - Glucose concentration - Reason for prescription change	
<u>Medications</u> - Diuretics dose - Classes of different antihypertensive drugs - Insulin	<u>Changes in medications</u> - Diuretics dose - Classes of different antihypertensive drugs - Insulin	
		<u>Reason of study termination:</u> - Change to HD - Transplantation - Change of centre - Death - Patient wish - Investigator wish
<u>Comments regarding the current visit</u>	<u>Comments regarding the current visit</u>	

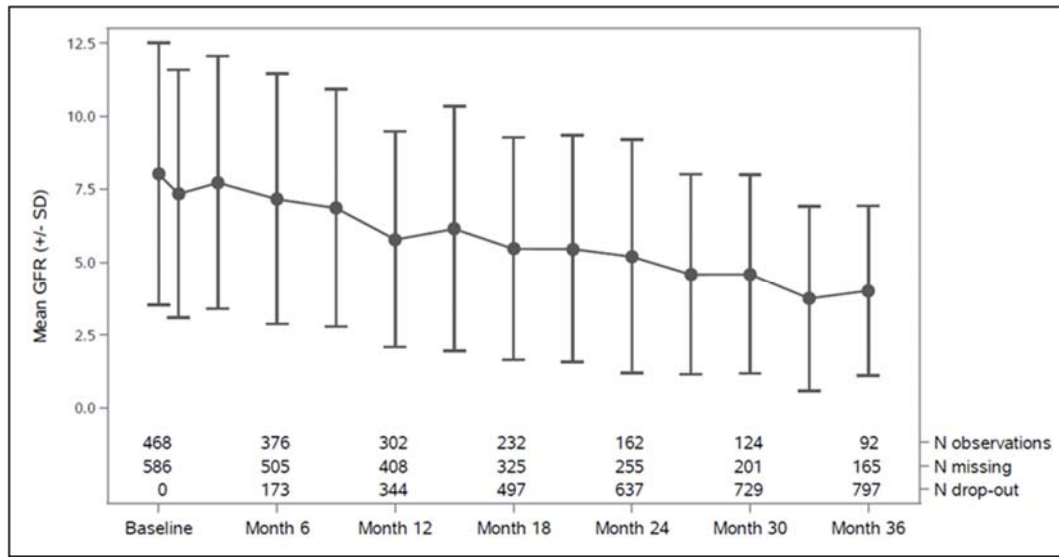
Supplemental Figure 1: Flow diagram of the analysis population



Supplemental Figure 2: Course of systolic (A) and diastolic (B) blood pressure.



Supplemental Figure 3: Course of GFR during the study



Supplemental Figure 4: Course of 24-hr urine output during the study

