

In the format provided by the authors and unedited.

# Autophagic cell death restricts chromosomal instability during replicative crisis

Joe Nassour<sup>1</sup>, Robert Radford<sup>1</sup>, Adriana Correia<sup>1</sup>, Javier Miralles Fusté<sup>1</sup>, Brigitte Schoell<sup>2</sup>, Anna Jauch<sup>2</sup>, Reuben J. Shaw<sup>1</sup> & Jan Karlseder<sup>1\*</sup>

---

<sup>1</sup>The Salk Institute for Biological Studies, La Jolla, CA, USA. <sup>2</sup>Institute of Human Genetics, University of Heidelberg, Heidelberg, Germany. \*e-mail: karlseder@salk.edu

Figure 1b (HMECs)

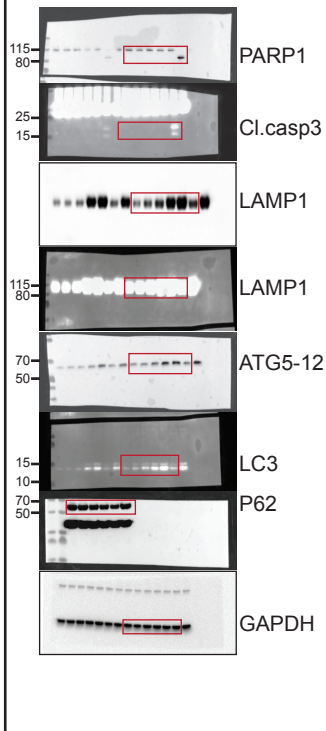


Figure 1b (IMR90E6E7)

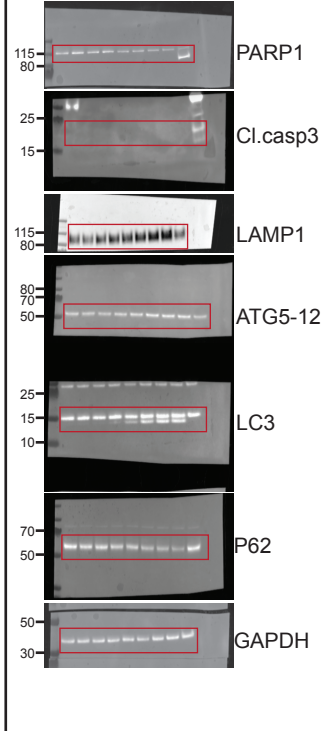


Figure 1b (HMECs)

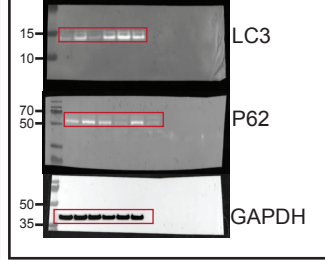


Figure 1b (IMR90E6E7)

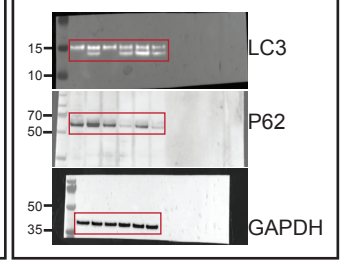


Figure 3a (HMECs)

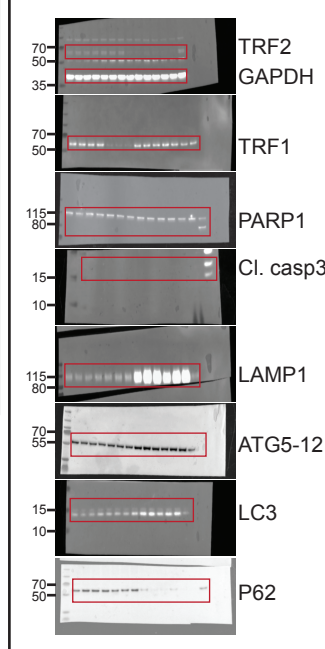


Figure 3a (IMR90E6E7)

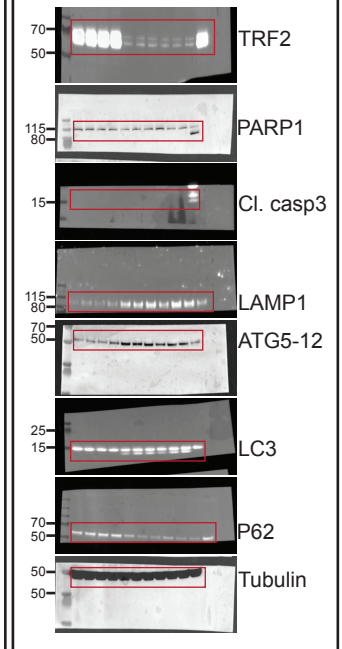


Figure 3d

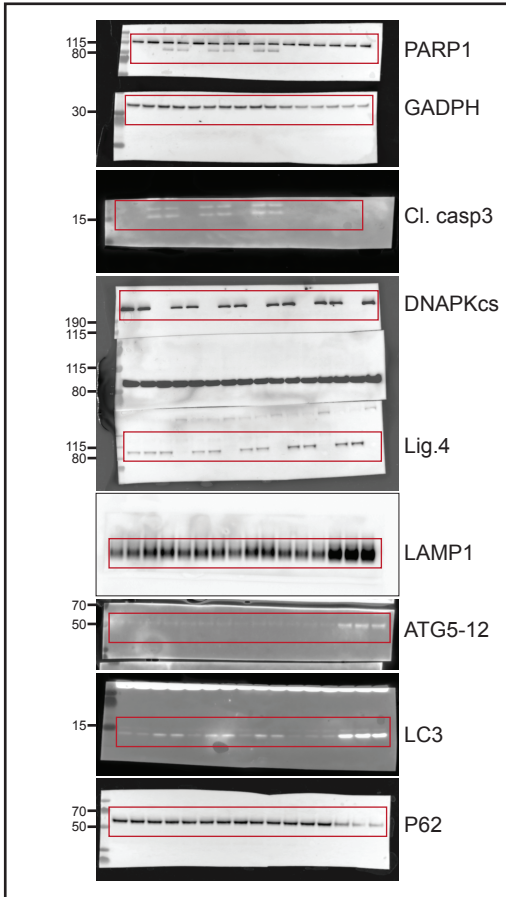
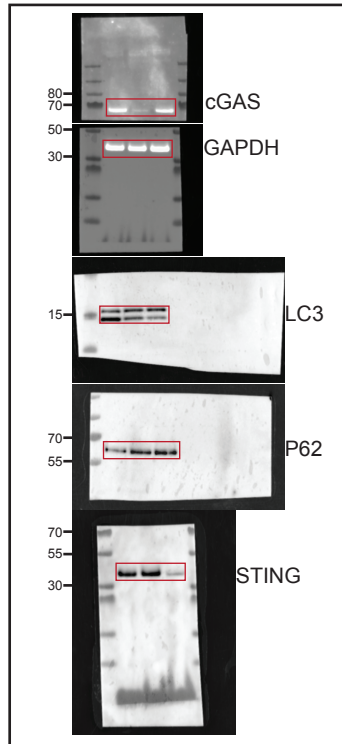
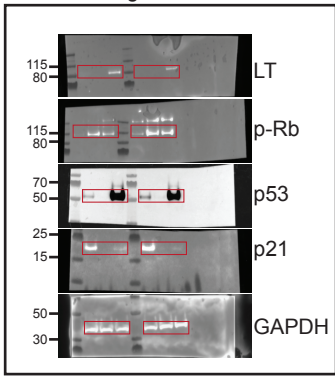


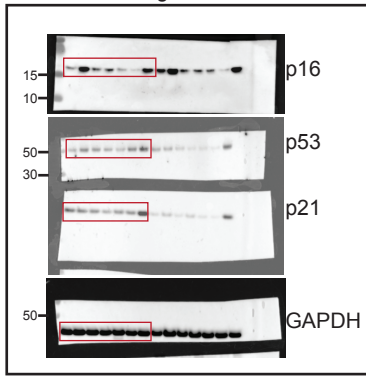
Figure 4e



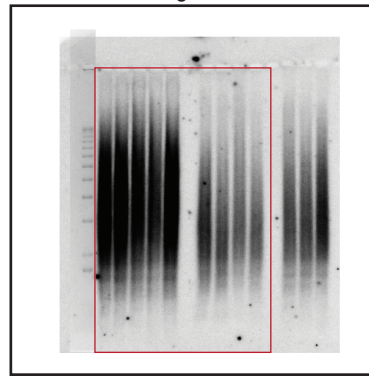
ED figure 1b



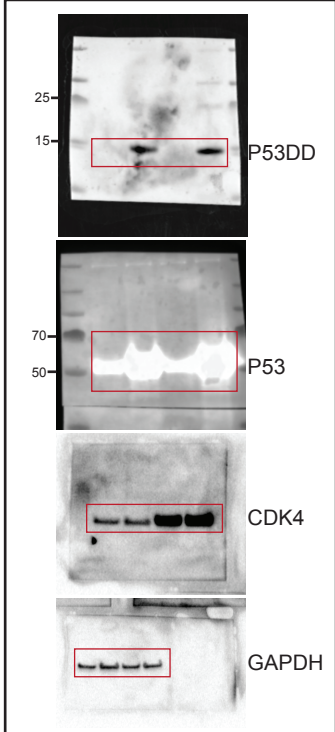
ED figure 1d



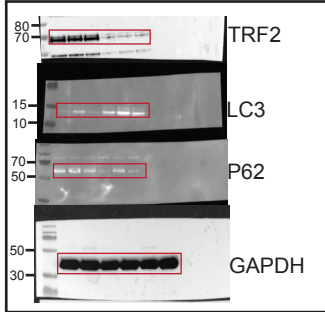
ED figure 5a



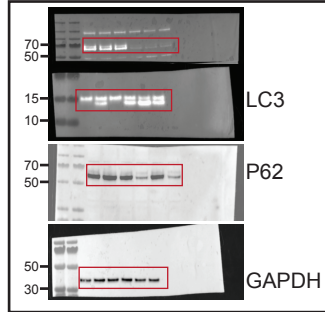
ED figure 1e



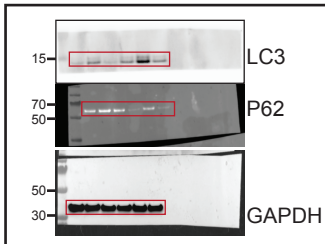
ED figure 6c (HMECs)



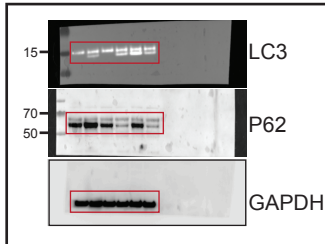
ED figure 6c (IMR90E6E7)



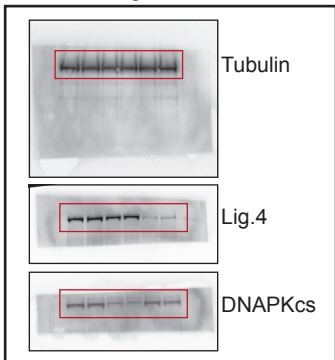
ED figure 7e (HMECs)



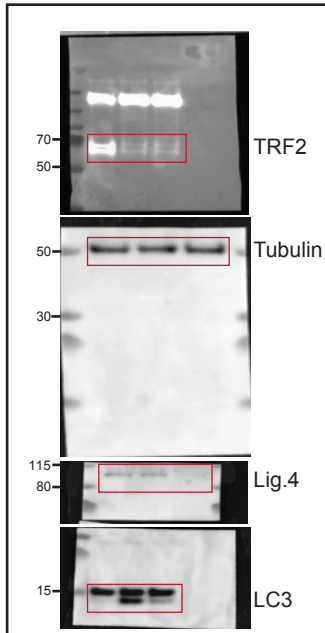
ED figure 7e (IMR90E6E7)



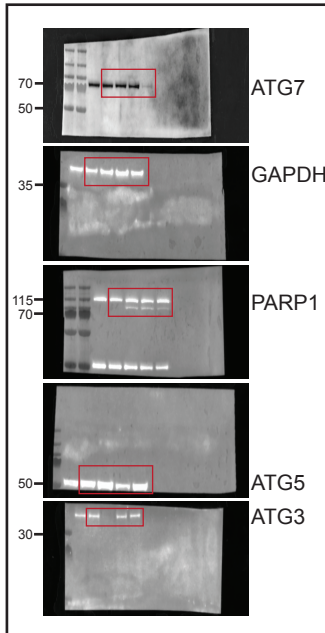
ED figure 9a



ED figure 9g



ED figure 4a (HMECs)



ED figure 4a (IMR90E6E7)

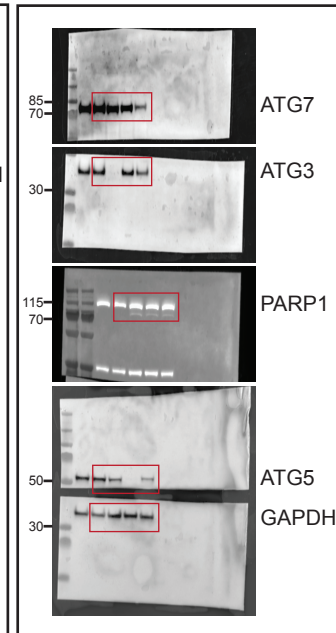


Figure 7d

