

SUPPLEMENTARY MATERIALS

**Seasonal Variations in Transition, Mortality, and Kidney Transplantation
among Patients with End-Stage Renal Disease in the United States**

Authors:

Yoshitsugu Obi, Kamyar Kalantar-Zadeh, Yaping Wang, MS, Elani Streja, Connie M. Rhee, Uttam G. Reddy,

Melissa Soohoo, Vanessa Ravel, Amy S. You, Jennie Jing, John J. Sim, Danh V. Nguyen, Daniel Gillen, Csaba P.

Kovesdy, Bruce Robinson, and Rajiv Saran

Supplementary Table 1. The definition of cardiovascular and infectious death according to the cause of death in the form CM2746.

Cause of Death in the form CM2746	Category
<p>Cardiac Arrest, Cause Unknown Myocardial Infarction, Acute Cardiac Arrhythmia Cerebro-Vascular Accident Including Intracranial Hemorrhage Cardiomyopathy Atherosclerotic Heart Disease Congestive heart failure Ischemic Brain Damage/Anoxic Encephalopathy Pulmonary Edema Due To Exogenous Fluid Mesenteric Infarction/Ischemic Bowel Valvular Heart Disease Other Hemorrhage (Not Codes 38-42,72) Pulmonary Embolus Hemorrhage From Vascular Access Hemorrhage From Ruptured Vascular Aneurysm Pericarditis, Incl. Cardiac Tamponade Hemorrhage From Surgery (Not 38,39 Or 40) Hemorrhage From Transplant Site Hemorrhage From Dialysis Circuit Myocardial Infarction, Acute Embolism, Air *Discontinued, as of Aug. 1990 Hemorrhage (Other Than 04, 07, Or 08) *Discontinued, as of Aug. 1990 Vascular Access *Discontinued, as of Aug. 1990 Cardiac (Other Than 01 Or 02) *Discontinued, as of Aug. 1990 Cerebrovascular *Discontinued, as of Aug. 1990 Pericarditis(incl. Cardiac Tamponade) *Discontinued, as of Aug. 1990 Embolism, Pulmonary *Discontinued, as of Aug. 1990</p>	Cardiovascular
<p>Septicemia, Other Septicemia, Due To Peripheral Vascular Disease, Gangrene Pulmonary infection (pneumonia, influenza)</p>	Infection

Pulmonary Infection (Bacterial)

Septicemia, Due To Vascular Access *Discontinued, as of Oct 2004

Septicemia due to vascular access catheter

Abdominal infection (peritonitis-not complication of PD, perforated bowel,
diverticular disease, gallbladder)

Cardiac infection (endocarditis)

Septicemia, Due To Peritonitis

Septicemia due to internal vascular access

Infection, Other

Pulmonary Infection (Other)

Aids

Central nervous system infection (brain abscess, meningitis, encephalitis, etc.)

Genito-urinary infection (urinary tract infection, pyelonephritis, renal abscess)

Peritonitis (complication of peritoneal dialysis)

Peritoneal access infectious complication, bacterial

Viral Infection, Other (Not 64 Or 65)

Pulmonary Infection (Fungal))

Peritoneal access infectious complication, fungal

Viral Infection, Cmv

Tuberculosis

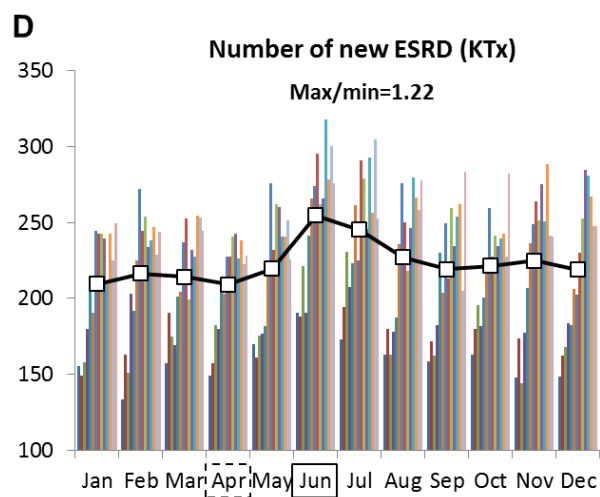
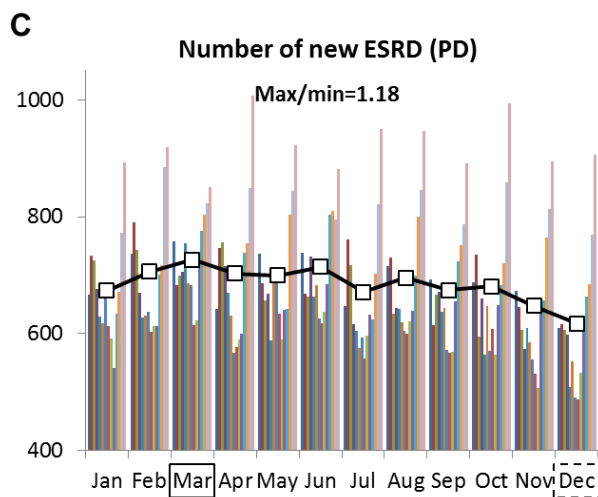
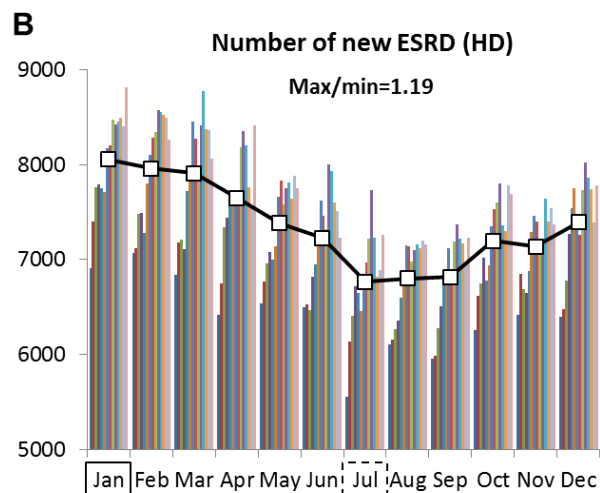
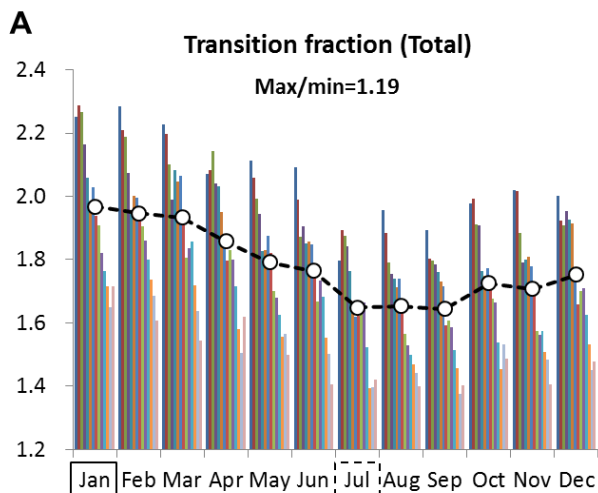
Viral Hepatitis *Discontinued, as of Aug. 1990

Septicemia *Discontinued, as of Aug. 1990

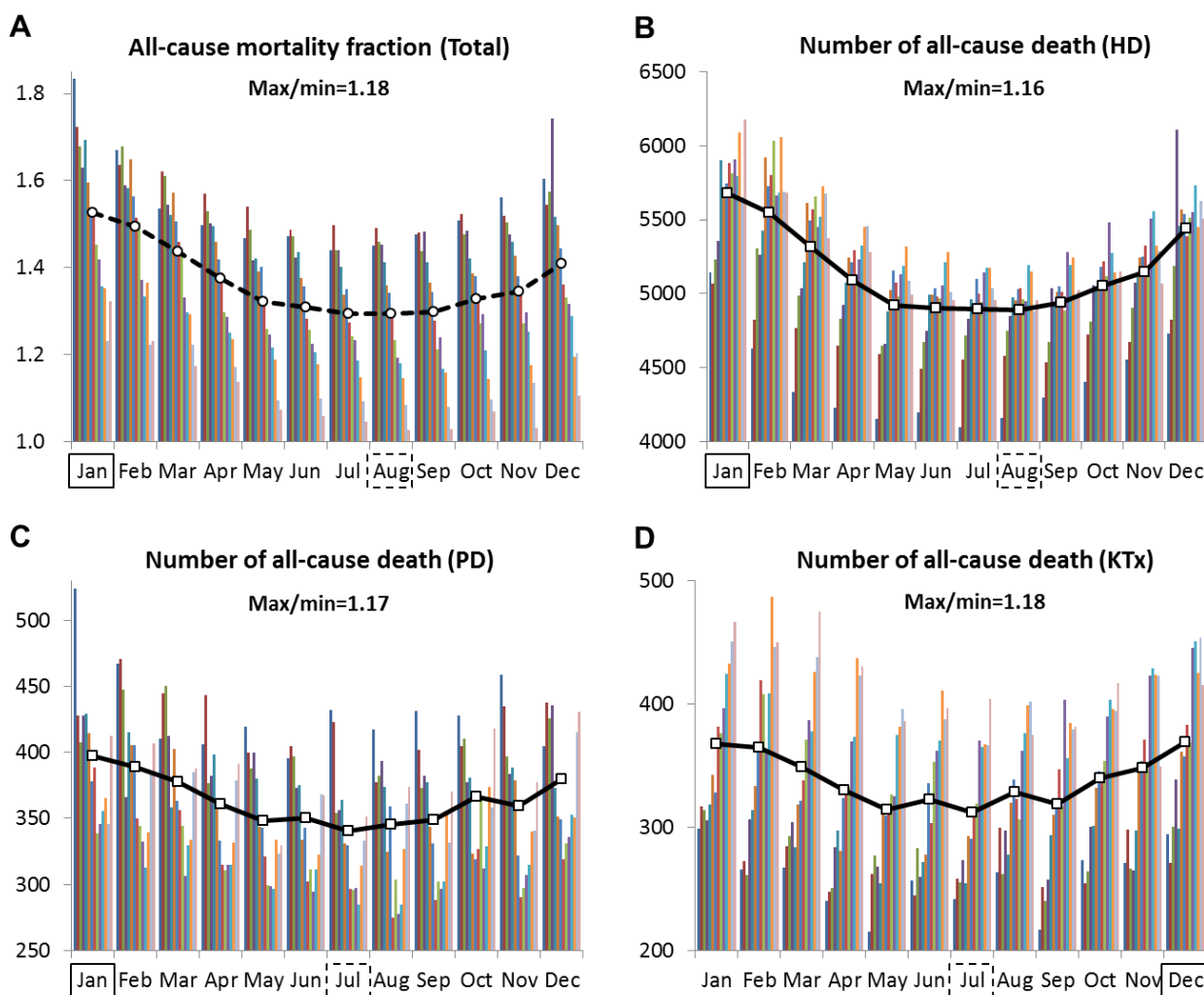
Pulmonary Infection *Discontinued, as of Aug. 1990

Infection (Other Than 10, 11, Or 12) *Discontinued, as of Aug. 1990

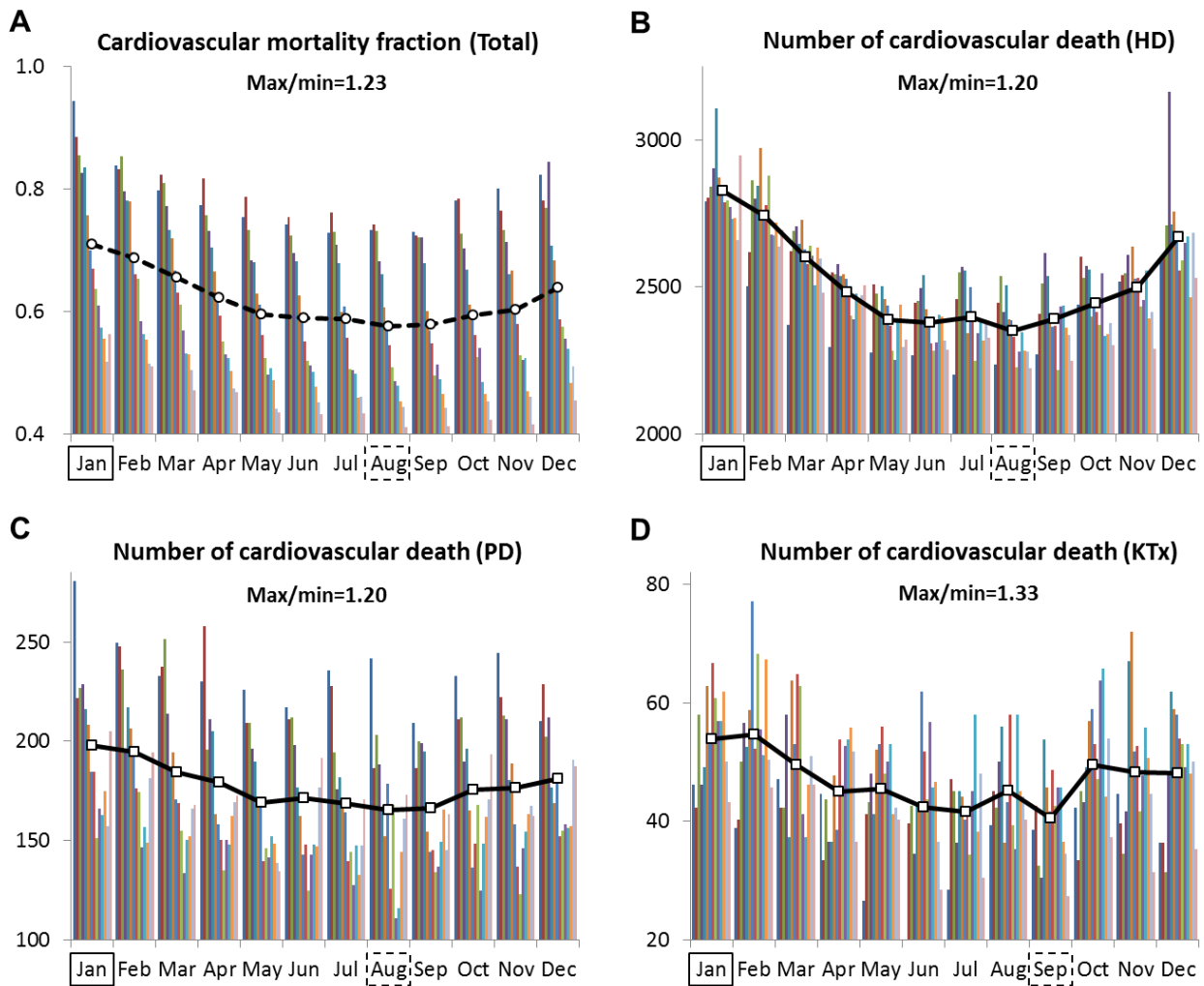
Supplementary Figure 1. (A) Overall monthly transition fractions to ESRD and (B to D) the number of new ESRD patients by modality (hemodialysis [HD], peritoneal dialysis [PD] and kidney transplantation [KTx], respectively) at each month over 14 years (2000-2013) in the United States. Bars represent monthly values from 2000 (far left) to 2013 (far right), which were normalized based on days of month. Points represent 14-year averages. Solid and dashed box indicate month with highest and lowest 14-year averaged values, respectively.



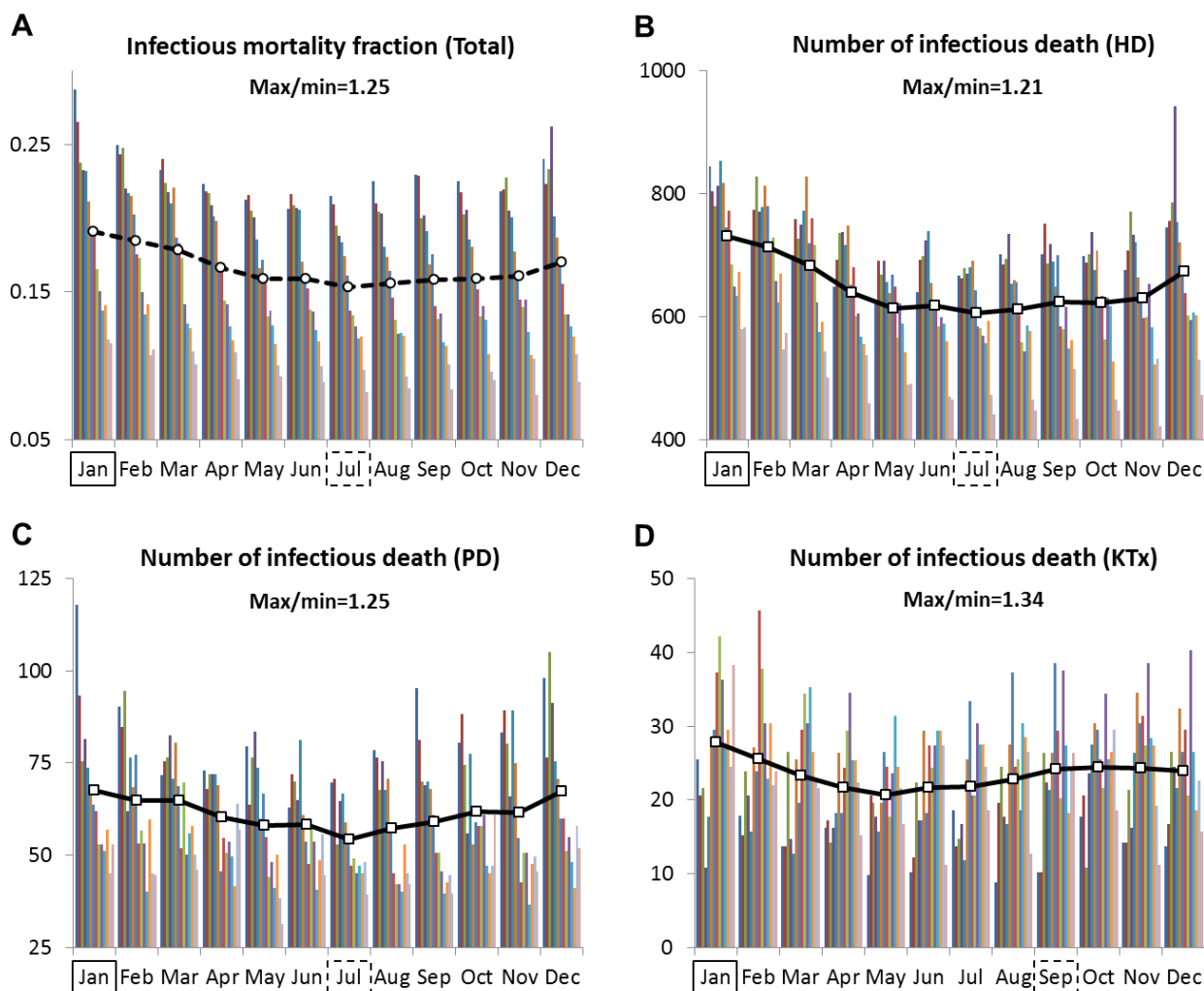
Supplementary Figure 2. (A) Monthly all-cause mortality fraction in patients with renal replacement therapy and (B to D) the number of cases by modality at each month over 14 years (2000-2013) in the United States. Bars represent monthly values from 2000 (far left) to 2013 (far right), which were normalized based on days of month. Points represent 14-year averages. Solid and dashed box indicate month with highest and lowest 14-year averaged values, respectively. Abbreviation: HD, hemodialysis; PD, peritoneal dialysis; KTx, kidney transplantation.



Supplementary Figure 3. (A) Monthly cardiovascular mortality fraction in patients with renal replacement therapy and (B to D) the number of cases by modality at each month over 14 years (2000-2013) in the United States. Bars represent monthly values from 2000 (far left) to 2013 (far right), which were normalized based on days of month. Points represent 14-year averages. Solid and dashed box indicate month with highest and lowest 14-year averaged values, respectively. Abbreviation: HD, hemodialysis; PD, peritoneal dialysis; KTx, kidney transplantation.



Supplementary Figure 4. (A) Monthly infectious mortality fraction in patients with renal replacement therapy and (B to D) the number of cases by modality at each month over 14 years (2000-2013) in the United States. Bars represent monthly values from 2000 (far left) to 2013 (far right), which were normalized based on days of month. Points represent 14-year averages. Solid and dashed box indicate month with highest and lowest 14-year averaged values, respectively. Abbreviation: HD, hemodialysis; PD, peritoneal dialysis; KTx, kidney transplantation.



Supplementary Figure 5. (A) Kidney transplant fraction, (B) the number of living kidney transplantation, (C) the number of cadaveric kidney transplantation, and (D) kidney transplant failure fraction at each month over 14 years (2000-2013) in the United States. Bars represent monthly values from 2000 (far left) to 2013 (far right), which were normalized based on days of month. Points represent 14-year averages. Solid and dashed box indicate month with highest and lowest 14-year averaged values, respectively. Abbreviation: HD, hemodialysis; PD, peritoneal dialysis; KTx, kidney transplantation.

