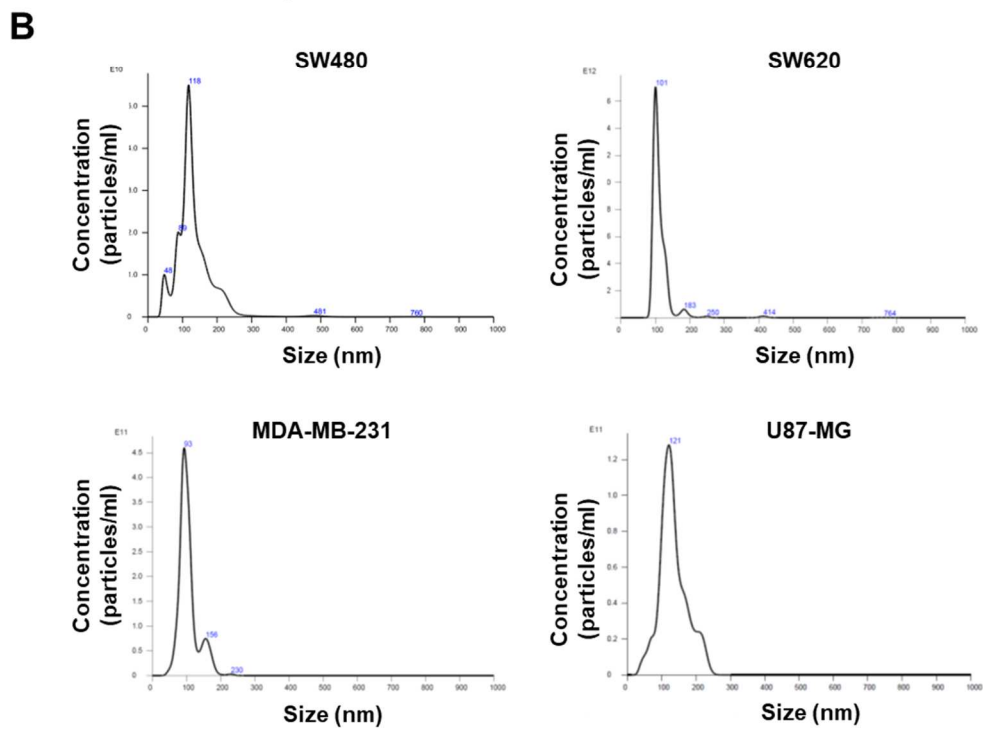
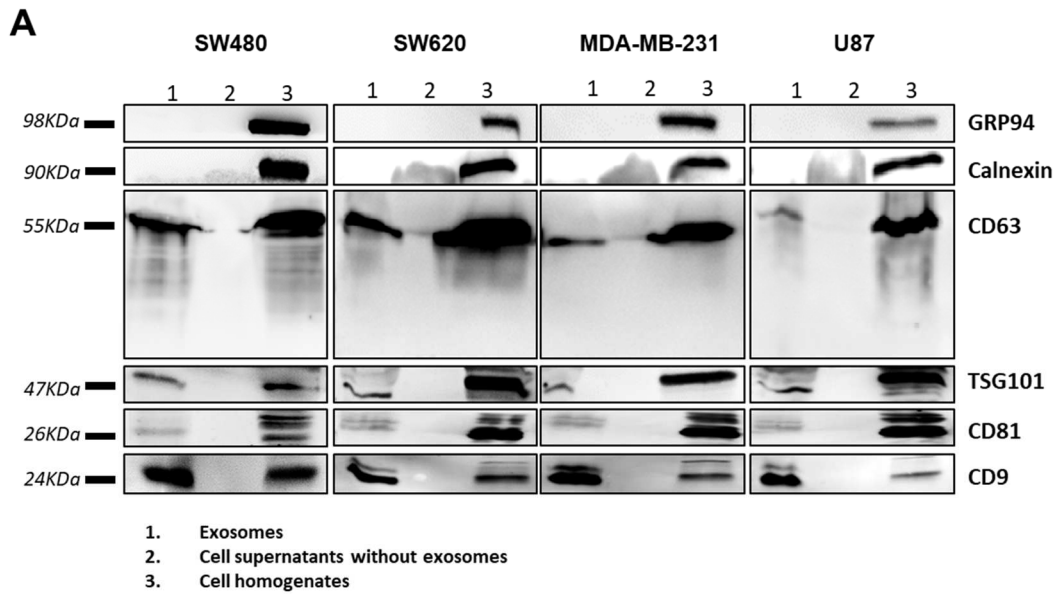


**Toll-like Receptor-4 Activation Boosts the Immunosuppressive Properties of Tumor Cells-derived Exosomes**

Rossana Domenis, Adriana Cifù, Daniele Marinò, Martina Fabris, Kayvan R. Niazi, Patrick Soon-Shiong, Francesco Curcio



**Supplementary Figure 1. Immunoblotting and particles size analysis of tumor-cells derived exosomes**

(A) Immunoblotting analysis of exosomes, Exoquick-derived supernatants and cells homogenates probed for the indicated proteins. (B) Representative NTA graphs of frequency size distribution of particles.