

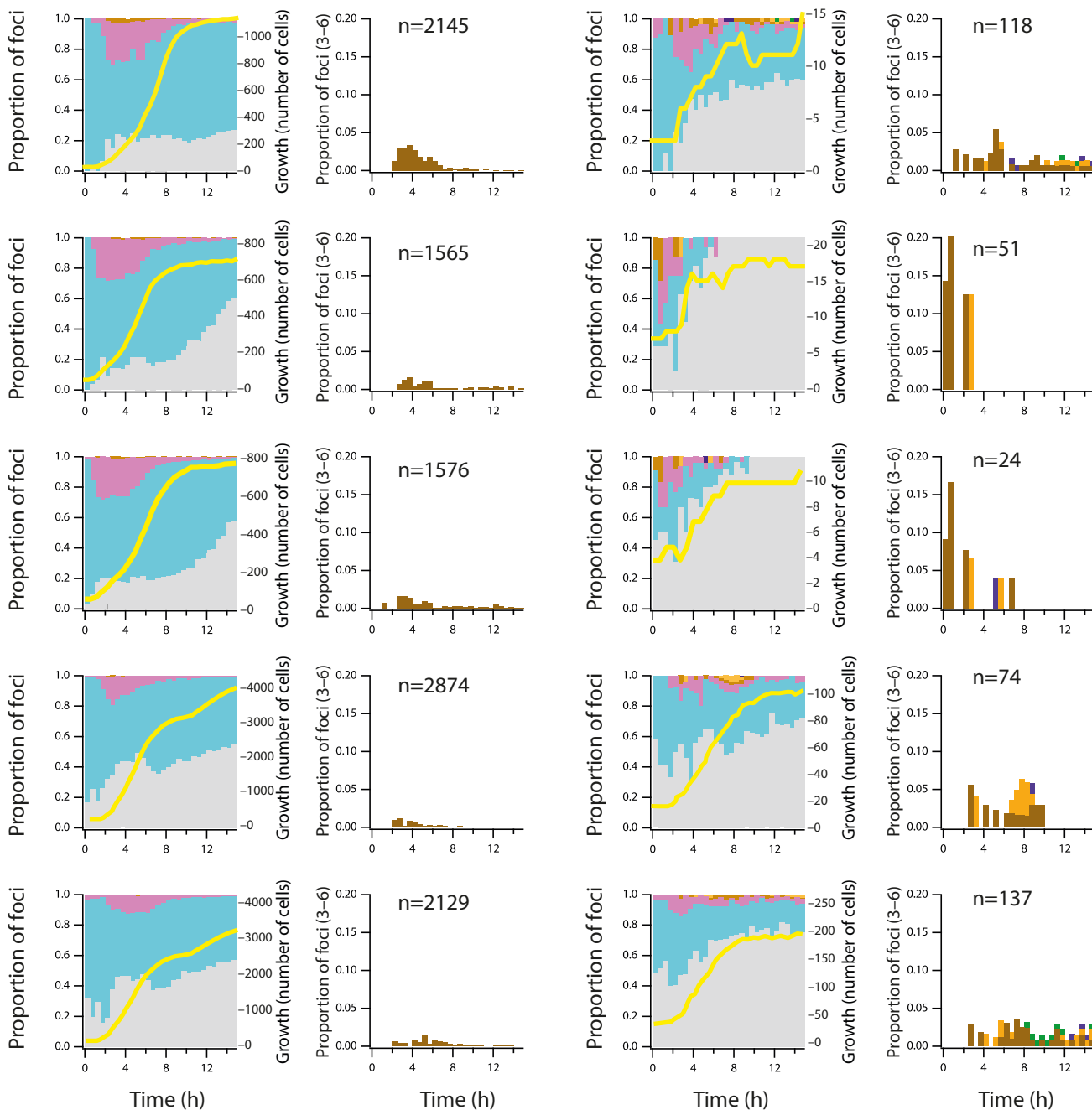
*P. putida* ICE<sub>clc</sub> -*lacO*<sub>ARRAY</sub>; *araC*, *lacI-cfp*; *P<sub>inR</sub>*-*echerry* (strain 5230)

Foci 0 1 2 3 4 5 6 number of cells

date: 20151013 5 technical replicates  
 date: 20151027 5 technical replicates  
 date: 20151027 4 technical replicates  
 date: 20170327 4 technical replicates  
 date: 20170327 4 technical replicates

**non-tc cells**

**tc cells**



**Supplementary Figure S3** | Biological replicates of foci formation in non-tc and tc cells in *P. putida* ICE*clc-lacO<sub>ARRAY</sub>*; *araC, lacI-cfp*; *P<sub>inR</sub>-echerry* (strain 5230). Proportional foci distributions over time of growth as in Fig. 2 in the main text, for all quantified foci, or per category of foci  $\geq 3$ . Numbers n= indicate the total amount of cells observed for each category during the duration of the experiment. Indications on the side indicate the number of technical replicates grouped per stack plot.