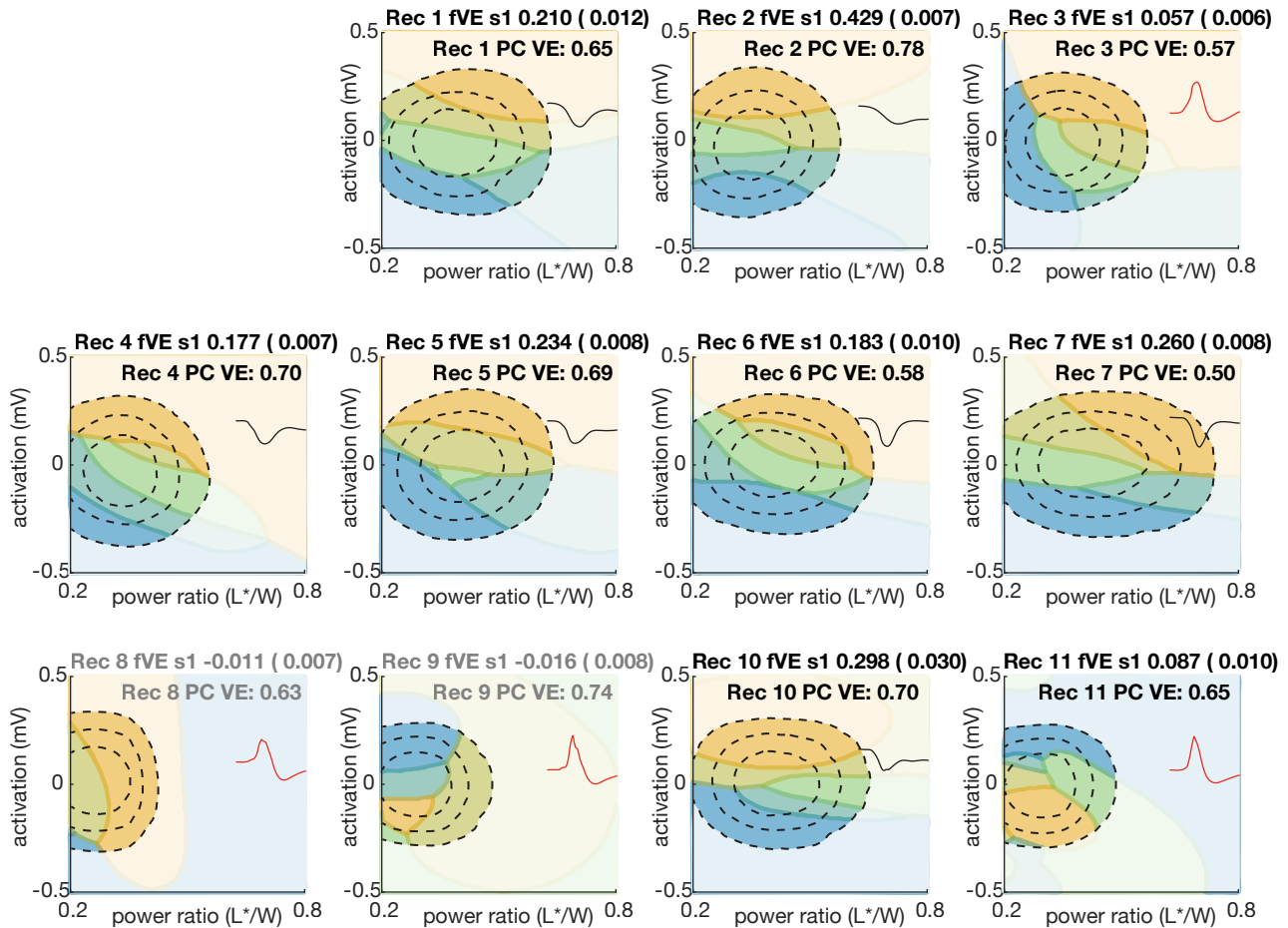


Classifier boundaries predicting weights on first PC



Supplemental Figure 1 (associated with Fig. 2): Classifier boundaries for the prediction of the weight onto the first principal component of the evoked responses for recordings 1 to 11. Each panel is a recording. Fraction of variance explained by the classifier (fVE s1) is in the title of each panel (bootstrapped SE in parentheses). Gray indicates that the classifier did not predict above chance levels (shuffle test). PC VE is the variance explained for the first principal component for each recording. (fVE cannot exceed PC VE.) Inset shape shows the principal component (PC) loadings. Black is “amplitude” (Rec. 1, 2, 4, 5, 6, 7, 10) and red is “sharpness/latency” (Rec. 3, 8, 9, 11). Compare to Supplemental Figure 2, which shows the same plots for the second principal component.