

Lessons Learned from Large-Scale, First-Tier Clinical Exome Sequencing in a Highly Consanguineous Population

Dorota Monies,^{1,2,3} Mohammed Abouelhoda,^{1,2,3,52} Mirna Assoum,^{3,52} Nabil Moghrabi,^{1,2,3,52} Rafiullah Rafiullah,^{3,52} Naif Almontashiri,^{4,52} Mohammed Alowain,^{5,52} Hamad Alzaidan,^{5,52} Moeen Alsayed,^{5,52} Shazia Subhani,^{1,2,3,52} Edward Cupler,⁶ Maha Faden,⁷ Amal Alhashem,⁸ Alya Qari,⁵ Aziza Chedrawi,⁹ Hisham Aldhalaan,⁹ Wesam Kurdi,¹⁰ Sameena Khan,⁹ Zuhair Rahbeeni,⁵ Maha Alotaibi,⁷ Ewa Goljan,^{1,2,3} Hadeel Elbardisy,³ Mohamed ElKalioby,^{2,3} Zeeshan Shah,^{1,2,3} Hibah Alruwaili,^{1,2,3} Amal Jaafar,^{1,2,3} Ranad Albar,² Asma Akilan,³ Hamsa Tayeb,^{1,2,3} Asma Tahir,^{1,2,3} Mohammed Fawzy,^{1,2,3} Mohammed Nasr,^{1,2,3} Shaza Makki,³ Abdullah Alfaifi,¹¹ Hanna Akleh,¹² Suad Yamani,⁹ Dalal Bubshait,¹³ Mohammed Mahnashi,¹⁴ Talal Basha,¹⁵ Afaf Alsagheir,¹⁶ Musad Abu Khaled,⁹ Khalid Alsaleem,¹⁶ Maisoon Almugbel,¹⁰ Manal Badawi,⁹ Fahad Bashiri,¹⁷ Saeed Bohlega,⁹ Raashida Sulaiman,⁵ Ehab Tous,⁹ Syed Ahmed,²¹ Talal Algoufi,²¹ Hamoud Al-Mousa,²² Emadia Alaki,²² Susan Alhumaidi,²³ Malak Althagafi,^{2,3} Hadeel Alghamdi,¹⁵

(Author list continued on next page)

We report the results of clinical exome sequencing (CES) on >2,200 previously unpublished Saudi families as a first-tier test. The predominance of autosomal-recessive causes allowed us to make several key observations. We highlight 155 genes that we propose to be recessive, disease-related candidates. We report additional mutational events in 64 previously reported candidates (40 recessive), and these events support their candidacy. We report recessive forms of genes that were previously associated only with dominant disorders and that have phenotypes ranging from consistent with to conspicuously distinct from the known dominant phenotypes. We also report homozygous loss-of-function events that can inform the genetics of complex diseases. We were also able to deduce the likely causal variant in most couples who presented after the loss of one or more children, but we lack samples from those children. Although a similar pattern of mostly recessive causes was observed in the prenatal setting, the higher proportion of loss-of-function events in these cases was notable. The allelic series presented by the wealth of recessive variants greatly expanded the phenotypic expression of the respective genes. We also make important observations about dominant disorders; these observations include the pattern of *de novo* variants, the identification of 74 candidate dominant, disease-related genes, and the potential confirmation of 21 previously reported candidates. Finally, we describe the influence of a predominantly autosomal-recessive landscape on the clinical utility of rapid sequencing (Flash Exome). Our cohort's genotypic and phenotypic data represent a unique resource that can contribute to improved variant interpretation through data sharing.

Introduction

Consanguinity is an ancient human practice that persists to this day in many parts of the world because of a multitude of incentives.^{1,2} A consanguineous loop renders the genomes of the offspring “autozygous” to an extent that correlates with the degree of haplotype sharing between the parents, and this is, in turn, a function of their degree of relatedness.³ Autozygosity is a rich source of homozygous alleles, the phenotypic expression of which spans the entire spectrum from embryonic lethal to clin-

ically benign or even advantageous.^{4,5} Furthermore, the telltale sign of autozygosity, i.e., extended regions of homozygosity delimited by crossing-over events that “shrink” the founder haplotype, is an additional advantage that makes the homozygous alleles of interest readily mappable.⁶ It is not surprising, therefore, that Saudi Arabia, which has a consanguinity rate of >50% and a high fertility rate, represents a unique resource for the study of this phenomenon and for exploring its relevance both to basic human genetics and applied clinical genetics.^{2,7}

¹Department of Genetics, King Faisal Specialist Hospital and Research Centre, Riyadh 11211, Saudi Arabia; ²Saudi Human Genome Program, King Abdulaziz City for Science and Technology, Riyadh 12354, Saudi Arabia; ³Saudi Diagnostic Laboratories, King Faisal Specialist Hospital and Research Centre, Riyadh 11211, Saudi Arabia; ⁴Clinical Molecular and Biochemical Genetics, Taibah University, Madinah 42353, Saudi Arabia; ⁵Department of Medical Genetics, King Faisal Specialist Hospital and Research Centre, Riyadh 11211, Saudi Arabia; ⁶Neurosciences Department, King Faisal Specialist Hospital and Research Centre, Jeddah 23433, Saudi Arabia; ⁷Genetics and Metabolism, King Saud Medical Complex, Riyadh 12746, Saudi Arabia; ⁸Pediatrics Department, Prince Sultan Military Medical Complex, Riyadh 12233, Saudi Arabia; ⁹Neurosciences Department, King Faisal Specialist Hospital and Research Centre, Riyadh, 11211, Saudi Arabia; ¹⁰Obstetrics and Gynecology Department, King Faisal Specialist Hospital and Research Centre, Riyadh 11211, Saudi Arabia; ¹¹Pediatrics Department, Security Forces Hospital, Riyadh 11481, Saudi Arabia; ¹²Academic and Training Affairs, King Faisal Specialist Hospital and Research Centre, Riyadh 11211, Saudi Arabia; ¹³Pediatrics Department, King Fahad Hospital of the University, Al-Khobar 31952, Saudi Arabia; ¹⁴Genetics and Medicine, King Fahd Central Hospital, Giza 82666, Saudi Arabia; ¹⁵Pediatrics Department, King Faisal Specialist Hospital and Research Centre, Jeddah 23433, Saudi Arabia; ¹⁶Pediatrics Department, King Faisal Specialist Hospital and Research Centre, Riyadh 11211, Saudi Arabia; ¹⁷Department of Pediatrics, College

(Affiliations continued on next page)



Malak Alghamdi,²³ Ahmed Sahly,¹⁶ Shapar Nahrir,²³ Ali Al-Ahmari,^{21,49} Hisham Alkuraya,²⁴ Ali Almehaidib,²⁵ Mohammed Abanemai,²⁵ Fahad Alsohaibaini,²⁵ Bandar Alsaud,²² Rand Arnaout,²² Ghada M.H. Abdel-Salam,²⁶ Hasan Aldhekri,¹⁶ Suzan AlKhatir,^{13,50} Khalid Alqadi,⁹ Essam Alsabban,¹⁶ Turki Alshareef,²⁷ Khalid Awartani,¹⁰ Hanaa Banjar,²⁸ Nada Alsahan,¹⁰ Ibraheem Abosoudah,²⁹ Abdullah Alashwal,³⁰ Wajeeh Aldekhail,²⁵ Sami Alhajjar,³¹ Sulaiman Al-Mayouf,¹⁶ Abdulaziz Alsemari,⁹ Walaa Alshuaibi,³² Saeed Altala,³³ Abdulhadi Altalhi,³⁴ Salah Baz,⁹ Muddathir Hamad,³² Tariq Abalkhail,⁹ Badi Alenazi,³⁵ Alya Alkaff,¹⁰ Fahad Almohareb,³⁶ Fuad Al Mutairi,^{37,51} Mona Alsaleh,²¹ Abdullah Alsonbul,³⁸ Somaya Alzelaye,³⁹ Shakir Bahzad,⁴⁰ Abdulaziz Bin Manee,¹⁶ Ola Jarrad,¹⁶ Neama Meriki,¹⁸ Bassem Albeirouti,⁴¹ Amal Alqasmi,²³ Mohammed AlBalwi,⁴² Nawal Makhseed,⁴³ Saeed Hassan,³² Isam Salih,⁴⁴ Mustafa A. Salih,¹⁷ Marwan Shaheen,¹⁹ Saadeh Sermin,²⁷ Shamsad Shahrukh,⁶ Shahrukh Hashmi,¹⁹ Ayman Shawli,⁴⁵ Ameen Tajuddin,⁴⁶ Abdullah Tamim,⁴⁷ Ahmed Alnahari,²⁰ Ibrahim Ghemlas,²¹ Maged Hussein,⁴⁸ Sami Wali,⁸ Hatem Murad,⁹ Brian F. Meyer,^{1,2,3} and Fowzan S. Alkuraya^{1,2,49,*}

Efforts to exploit these unique characteristics have indeed revealed many important observations, not least of which was the discovery of a large number of disease-related genes that were almost always recessive.^{8–11} However, those efforts had two key limitations. First, the discovery of disease-related genes has largely been limited to specific phenotypes. Such a selective approach, although helpful in uncovering phenotype-specific variants, is clearly inefficient in achieving the goal of having all disease-related genes identified by 2020.¹² Second, the “phenotype-first” approach risks missing affected individuals that have not been evaluated by experts in the delineation of that specific phenotype, individuals that have been adequately phenotyped but not enrolled in those phenotype-specific cohorts, and individuals that lack the typical phenotype.

Large-scale sequencing of all individuals with genetic diseases by any clinician who has the clinical suspicion, even if he or she lacks the necessary phenotyping expertise, offers an attractive approach that circumvents the historical limitations outlined above. Such a large scale “genomics-first” approach built on a central database was indeed the goal

of the Saudi Human Genome Program, in order to exploit the unique characteristics of the Saudi population to the fullest extent possible.¹³ However, it became quickly apparent that most clinicians were much more interested in clinical testing than research-based testing of their patients. Therefore, we launched a program of clinical exome sequencing (CES).¹⁴ The recent decision by the Ministry of Health to cover the cost of CES as a standard clinical test allowed clinicians from around the country to order this as a first-tier test on any individual with a suspected genetic diagnosis. Combined with the fact that all CES tests were run by a central lab, this presented an unprecedented opportunity to create the most comprehensive view to date of clinically relevant variants across the entire spectrum of genetic diseases in a highly consanguineous population.

Material and Methods

Study Population

Informed consent was obtained from all affected individuals (or their legal guardians) as a strict requirement prior to CES. The

of Medicine and King Khalid University Hospital, King Saud University, Riyadh 11461, Saudi Arabia; ¹⁸Maternal and Fetal Medicine, King Khalid University Hospital, Riyadh 12372, Saudi Arabia; ¹⁹Hematology and Bone Marrow Transplant, King Faisal Specialist Hospital and Research Centre, Riyadh 11211, Saudi Arabia; ²⁰Pediatric Department, King Fahad Central Hospital, Gizan, 82666, Saudi Arabia; ²¹Pediatric Hematology and Oncology, King Faisal Specialist Hospital and Research Centre, Riyadh 11211, Saudi Arabia; ²²Allergy - Immunology, King Faisal Specialist Hospital and Research Centre, Riyadh 11211, Saudi Arabia; ²³Pediatrics Department, King Saud Medical City, Riyadh 12746, Saudi Arabia; ²⁴Vitreoretinal Surgery, Specialized Medical Centre, Riyadh 11564, Saudi Arabia; ²⁵Gastroenterology, King Faisal Specialist Hospital and Research Centre, Riyadh 11211, Saudi Arabia; ²⁶Department of Clinical Genetics, National Research Centre, Cairo 12622, Egypt; ²⁷Pediatric Nephrology, King Faisal Specialist Hospital and Research Centre, Riyadh 11211, Saudi Arabia; ²⁸Pediatric Pulmonology, King Faisal Specialist Hospital and Research Centre, Riyadh 11211, Saudi Arabia; ²⁹Pediatric Hematology and Oncology, King Faisal Specialist Hospital and Research Centre, Jeddah 23433, Saudi Arabia; ³⁰Pediatric Endocrine and Metabolism, King Faisal Specialist Hospital and Research Centre, Riyadh 11211, Saudi Arabia; ³¹Pediatric Infectious Diseases, King Faisal Specialist Hospital and Research Centre, Riyadh 11211, Saudi Arabia; ³²Pediatrics Department, King Khalid University Hospital, Riyadh 12372, Saudi Arabia; ³³Pediatrics Department, Armed Forces Hospital, Khamis Mushait 62451, Saudi Arabia; ³⁴Pediatric Nephrology, King Saud Medical City, Riyadh 12746, Saudi Arabia; ³⁵Pediatrics Department, Alyamama Hospital, Riyadh 14222, Saudi Arabia; ³⁶Oncology Center, King Faisal Specialist Hospital and Research Centre, Riyadh 11211, Saudi Arabia; ³⁷King Abdullah International Medical Research Centre, King Saud Bin Abdulaziz University for Health Sciences, Riyadh 11564, Saudi Arabia; ³⁸Pediatric Rheumatology, King Faisal Specialist Hospital and Research Centre, Riyadh 11211, Saudi Arabia; ³⁹Pediatric Endocrine and Diabetes, Al Qunfudah General Hospital, Al Qunfudah 28821, Saudi Arabia; ⁴⁰Kuwait Medical Genetics Center, Kuwait City 65000, Kuwait; ⁴¹Hematology and Oncology, King Faisal Specialist Hospital and Research Centre, Jeddah 23433, Saudi Arabia; ⁴²Department of Pathology and Laboratory Medicine, King Saud bin Abdulaziz University for Health Sciences, King Abdullah International Medical Research Center, King Abdulaziz Medical City, Riyadh 11426, Saudi Arabia; ⁴³Pediatrics Department, Alsoor Clinic, Kuwait City 65000, Kuwait; ⁴⁴Hepatic-Pancreatic Surgery, King Faisal Specialist Hospital and Research Centre, Riyadh 11211, Saudi Arabia; ⁴⁵Department of Pediatrics, King Abdulaziz Medical City, Jeddah 9515, Saudi Arabia; ⁴⁶Neurology, King Fahad Hospital, Medina 59046, Saudi Arabia; ⁴⁷Pediatrics Neurology, King Faisal Specialist Hospital and Research Centre, Jeddah 23433, Saudi Arabia; ⁴⁸Nephrology Department, King Faisal Specialist Hospital and Research Centre, Riyadh 11211, Saudi Arabia; ⁴⁹College of Medicine, Alfaisal University, Riyadh 11533, Saudi Arabia; ⁵⁰Department of Pediatrics, College of Medicine, Imam Abdulrahman Bin Faisal University, Dammam 34221, Saudi Arabia; ⁵¹Medical Genetic Division, Department of Pediatrics, King Abdulaziz Medical City, Riyadh 14611, Saudi Arabia

⁵²These authors contributed equally

*Correspondence: falkuraya@kfshrc.edu.sa
<https://doi.org/10.1016/j.ajhg.2019.04.011>

consent also covered the option to receive or not to receive “secondary findings” defined as (1) ACMG (American College of Medical Genetics and Genomics) secondary findings¹⁵ and (2) carrier status for a predefined list of “known Saudi mutations (KSMs).”¹⁶ Venous blood samples collected in EDTA tubes were collected in the majority of instances for DNA extraction. For prenatal testing, DNA was extracted from chorionic villous or amniotic fluid samples. Where family history was negative, clinicians were encouraged to consider trio CES, although the choice was also given to only request CES on the index individual and then to run a Sanger test of segregation. Similarly, clinicians were given the choice between ordering CES on multiple affected members or to request a Sanger segregation test. For molecular autopsy by proxy (see below), samples were obtained from both parents of the deceased child(ren). Phenotypic data were provided as part of a standard paper form, although clinicians were encouraged to use free text to describe additional useful information. This study was approved by the local institutional review board (IRB) (KFSHRC RAC # 2181266).

Exome Sequencing and Variant Interpretation and Confirmation

For standard CES, we used the same protocol described before.¹⁴ Positional mapping was always incorporated in the pipeline regardless of the family history, as described before.¹⁴ All indel variants and only single base-pair substitutions that fell below our predetermined quality threshold were confirmed by Sanger sequencing, as described before.¹⁴ We also offered rapid exome sequencing with a turnaround time of <48 h (Flash Exome) as per the protocol shown in Figure S1. We used the ACMG guidelines for variant interpretation¹⁷ to classify the outcome of CES into three categories:

- (1) Solved: instances of individuals in which we identified pathogenic or likely pathogenic variants that explain the clinical indication in the expected zygosity. In the case of molecular autopsy by proxy for a suspected recessive phenotype in the deceased child(ren), both parents had to have, in the same gene, a pathogenic or likely pathogenic variant that explains the phenotype.
- (2) Ambiguous: these include instances of individuals with (1) a monoallelic pathogenic or likely pathogenic gene variant that explains a recessive phenotype, (2) a variant of unknown significance (VUS) that is in an established disease-related gene and that explains the phenotype, whether or not it is present in the expected zygosity for the disease, or (3) a VUS in a candidate gene. The variants in the latter category were carefully chosen to qualify as much as possible as pathogenic or likely pathogenic if the gene were established in the Online Mendelian Inheritance in Man (OMIM) database. In addition, only genes with compelling biological candidacy (special emphasis was made on animal models, but other lines of evidence were also pursued) were highlighted.
- (3) Negative: all other instances.

Segregation analysis was strongly encouraged, and we only report variants for which segregation analysis was either consistent with the presumed link to the disease or unavailable; all other variants that failed the segregation test were removed. Founder variants were defined as variants that are observed with a minor

allele frequency (MAF) > 0 in the Saudi population or that are present in two affected individuals who are not directly related but share the same haplotype and phenotype.

Results

The Diagnostic Yield of CES As A First-Tier Test Across Genetic Disorders in a Highly Consanguineous Population

A total of 3,310 CES tests were performed on 2,219 families (1,653 solo, 127 duo, 370 trio, 58 quad, and 11 others [five or more]) (Table S1). The majority (1,653 families) had index-only CES, although 566 families had duo, trio, quad, or other combinations (Figure 1). The empowerment of clinicians from all specialties to request CES as a first-tier test for individuals with any suspected genetic disease was key to the resulting diversity of clinical indications and ordering specialties (Table S1). This is further highlighted by the observation that nearly half of the requested tests were ordered by non-geneticists (Figure 1). As shown in Table S1 and Figure 1, the phenotypes included dysmorphic, neurodevelopmental, neuromuscular, neurodegenerative, cardiac, ophthalmologic, renal, gastrointestinal, dermatologic, audiologic, hematological, surgical, prenatal, and even pharmacogenetic phenotypes. Although we did not include any CES of cancer tissues, several individuals were referred in order to rule out hereditary cancer syndromes (Table S1). The overall diagnostic yield of CES based on “solved” cases only was 43.3% (961 out of 2,219) (Figure 1).

The Landscape of Disease-Related Variants in a Highly Consanguineous Population

By only considering the “solved” category, we show that autosomal-recessive variants account for the overwhelming majority (742 out of 961, 77.2%) of variants, and they were usually (730 out of 742, 98.4%) homozygous (Figure 1). Founder variants accounted for 405 (41.3%), and the remaining 575 variants (58.7%) can be considered private. Dominant variants were observed in 20% of the solved instances (192 out of 961), 25% (48 out of 192) of which were proven to be *de novo*, whereas parental samples were not available for the rest. On the other hand, only 3.9% (37 out of 961) of the instances were X-linked (Figure 1). Please note that the number of pathogenic or likely pathogenic variants (980) is larger than the number of solved instances (961) due to the presence of a few multi-locus phenotypes (see below). In total, we add to the literature 378 pathogenic or likely pathogenic variants not previously reported (Table S1). We also estimate the likelihood of carrier status for a predefined list of known Saudi mutations (KSMs, identified through our prior work on the local population), excluding variants related to the clinical indication, as follows: among the 1,653 simplex cases from this study, 498 individuals (30.1%) carried one KSM, 162 (9.8%) carried two KSMs,

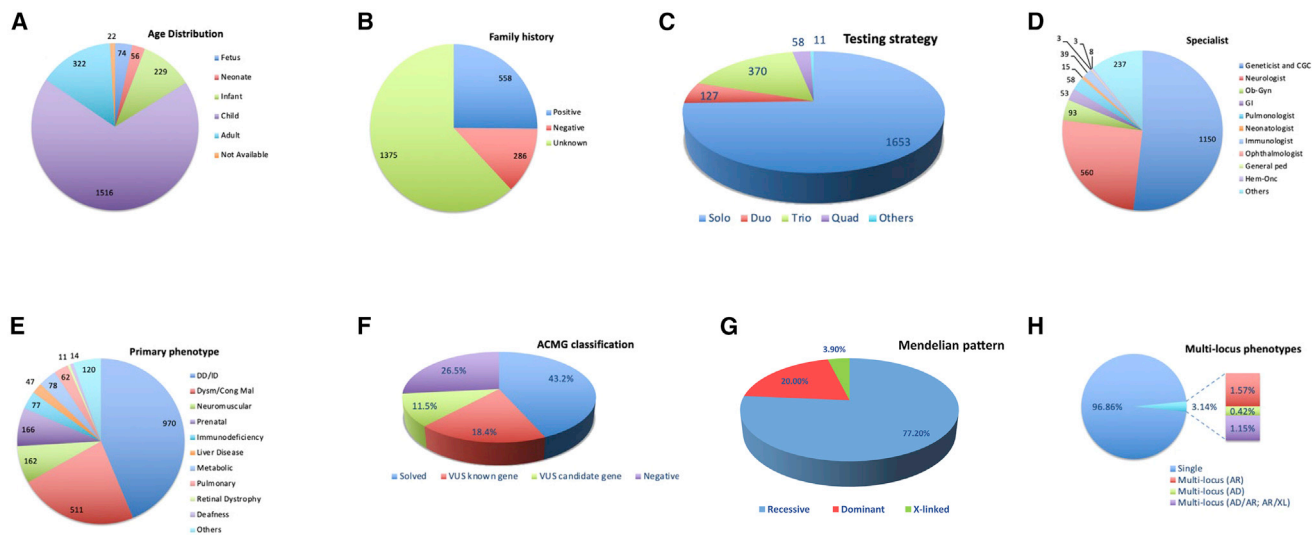


Figure 1. Summary of the Study Cohort Characteristics

- (A) Age distribution.
 (B) Family history.
 (C) Testing strategy.
 (D) Ordering specialty.
 (E) Primary indication (prenatal in this figure includes individuals who presented for testing for carrier status).
 (F) ACMG classification of variants.
 (G) Mendelian patterns of pathogenic and likely pathogenic variants.
 (H) Multi-locus phenotypes.

39 (2.4%) carried three KSMs, 11 (0.7%) carried four KSMs, and one (0.06%) carried five KSMs (Figure S2). We also tested 1,006 parents and found (excluding the variants that are directly related to the condition in their tested children) that the percentage of parents who carry at least one KSM is 29.4% (19.8% carried one, 7.6% carried two, 1.7% carried three, and 0.3% carried four, which was the highest carrier status observed among parents). Furthermore, we asked whether the low percentage of multi-locus phenotypes in our study (see below) can be explained by the low probability of shared parental carrier status for more than one KSM. Indeed, by specifically interrogating couples, we found that of the 503 parental duos available to us, 49 (9.7%) shared one, and only 13 (2.6%) shared two KSMs, again after excluding the variants that are directly related to the condition in their tested child (Figure S2). No couples shared more than two KSMs. This is consistent with our observation that multi-locus phenotypes (3.1% of solved instances, or 30 out of 961) comprised dual recessive diagnoses in less than half of the cases (13 out of 30) (Figure 1 and Table S3).

High Throughput Discovery of Candidate Genes

Table S1 lists 236 genes that have no established OMIM phenotype and that we propose as candidate genes. Not surprisingly, the majority ($n = 155$) are recessive; many of them ($n = 51$) predict loss of function, then dominant ($n = 74$), and then X-linked ($n = 7$). The highest level of confidence is given to 13 genes, which we observed had mutated independently in two families with a similar phenotype (Table 1). For example, we have identified two

families affected by non-syndromic intellectual disability, and each segregates a different homozygous truncating variant in *ALKBH8* (MIM: 613306).¹⁸ A syndrome of skeletal dysplasia with cerebellar atrophy was similarly identified in two families, each segregating a different homozygous truncating variant in *SMPD4* (MIM: 610457) (unpublished data). Abnormal cortical development with associated intellectual disability and epilepsy segregated with a different homozygous truncating variant in *TP73* (MIM: 601990) in each of the two affected families. Three families with suspected neuronal ceroid lipofuscinosis-like illness (neurodegeneration with retinal involvement) were found to harbor two different candidate variants in *USO1* (MIM: 603344). Other genes found to harbor two different recessive, likely deleterious variants include *EIF2A* (MIM: 609234), *ICE1* (MIM: 617958), *IQSEC3* (MIM: 612118), *SMG8* (MIM: 613175), and *UNC5A* (MIM: 607869). Multiple congenital anomalies syndromes were also observed in individuals who harbor independent heterozygous, likely deleterious variants in *MOV10* (MIM: 610742) and *RASIP1* (MIM: 609623).

The next level of confidence is for genes where the animal model recapitulates the observed human phenotype. For example, the severe, unexplained diarrhea in the child with a truncating variant in *MYO1A* (MIM: 601478) seems to be recapitulated by *Myo1a* knockout mice that have severe defects in the brush border of their intestine.¹⁹ The child who has brain malformation and a severe neurological phenotype and harbors a homozygous truncating variant in *SCYL2* (MIM: 616365) is another example wherein the candidacy of the gene is strongly supported

Table 1. List of Candidate Genes with More Than One Mutational Event Identified in this Cohort

ID	Gene	Variant(s)	Zygoty	Phenotype	Justification
17-1192	<i>ALKBH8</i>	GenBank: NM_001301010.1: c.1660C>T:p.Arg554Ter	Hom	Nonspecific intellectual disability with positive family history	(1) The nature of the variant (predicted deleterious, within autozygome) and (2) the nature of the gene (this gene is involved in tRNA modification, a process that is increasingly recognized as the core feature of a number of intellectual disability syndromes, most notoriously ADAT3-related, which is one of the most common forms of intellectual disability in Arabia).
17-6071	<i>ALKBH8</i>	GenBank: NM_001301010.1: c.1794delC: p.Trp599GlyfsTer19	Hom	Nonspecific intellectual disability with positive family history	(1) The nature of the variant (predicted deleterious, within autozygome) and (2) the nature of the gene (this gene is involved in tRNA modification, a process that is increasingly recognized as the core feature of a number of intellectual disability syndromes, most notoriously ADAT3-related, which is one of the most common forms of intellectual disability in Arabia).
17-1025	<i>EIF2A</i>	GenBank: NM_032025.4: c.649_650insT: p.Ser217MetfsTer4	Hom	Intellectual disability, ASD, and epilepsy	(1) The nature of the variant (predicted deleterious, within autozygome) and (2) the nature of the gene. This gene encodes a eukaryotic translation initiation factor that functions in the early steps of protein synthesis of a small number of specific mRNAs and is used for initiation at non-AUG codons (see PMID: 28982758).
17-6950	<i>EIF2A</i>	GenBank: NM_032025.4: c.1229A>C:p.Gln410Pro	Hom	Intellectual disability and intractable epilepsy	(1) The nature of the variant (predicted deleterious, within autozygome) and (2) the nature of the gene. This gene encodes a eukaryotic translation initiation factor that functions in the early steps of protein synthesis of a small number of specific mRNAs and is used for initiation at non-AUG codons (see PMID: 28982758).
18-2383	<i>ICE1</i>	GenBank: NM_015325.2: c.3724G>T:p.Asp1242Tyr	Hom	GDD, spasticity, optic atrophy, and brain atrophy	(1) The nature of the variant (predicted deleterious, within autozygome) and (2) the nature of the gene (<i>ICE1</i> promotes a link between splicing and nonsense-mediated mRNA decay [NMD]. Mutations in other NMD-related genes result in neurodevelopmental disorders. See PMID: 29528287).
REQ18-0816	<i>ICE1</i>	GenBank: NM_015325.2: c.603A>C:p.Lys201Asn	Hom	GDD and nonspecific brain atrophy	(1) The nature of the variant (predicted deleterious, within autozygome) and (2) the nature of the gene (<i>ICE1</i> promotes a link between splicing and nonsense-mediated mRNA decay [NMD]. Mutations in other NMD-related genes result in neurodevelopmental disorders. See PMID: 29528287).
17-5039	<i>IQSEC3</i>	GenBank: NM_015232.1: c.1144G>A:p.Gly382Ser	Hom	Speech delay, intellectual disability, ASD, and seizures (generalized tonic clonic)	(1) The nature of the variant (predicted deleterious, within autozygome) and (2) the nature of the gene (<i>IQSEC3</i> acts together with gephyrin to regulate inhibitory synapse development).
17-5139	<i>IQSEC3</i>	GenBank: NM_001170738.1: c.3340C>A:p.Leu1114Met	Hom	Cognitive and speech delay	(1) The nature of the variant (predicted deleterious, within autozygome) and (2) the nature of the gene (<i>IQSEC3</i> acts together with gephyrin to regulate inhibitory synapse development).

(Continued on next page)

Table 1. Continued

ID	Gene	Variant(s)	Zygoty	Phenotype	Justification
17-0049-C	<i>MOV10</i>	GenBank: NM_001130079.2: c.2101_2102insA: p.Ser701TyrfsTer18	Het	Gross motor delay, IUGR, oligohydramnios, hepatosplenomegaly, and cholestasis	(1) The nature of the variant (predicted deleterious) and (2) the nature of the gene (PLI: 0.99). <i>Mov10</i> is a novel telomerase-associated protein (see PMID: 19665004). It was demonstrated that <i>Mov10</i> is essential for gastrulation and for normal head, eye, and brain development (see PMID: 28662698). Consistent with the mouse model, knockdown of maternal <i>Mov10</i> in <i>Xenopus</i> led to defects in gastrulation and the development of notochord and paraxial mesoderm and a failure to neurulate (see PMID: 29266590).
18-1423	<i>MOV10</i>	GenBank: NM_001130079.2: c.2268_2269insTCGTGGA: p.Val757SerfsTer32	Het	Large patent ductus arteriosus, scoliosis, hemivertebrae, phocomelia, and omphalocele versus gastroschisis	(1) The nature of the variant (predicted deleterious) and (2) the nature of the gene (PLI: 0.99). <i>Mov10</i> is a novel telomerase-associated protein (see PMID: 19665004). It was demonstrated that <i>Mov10</i> is essential for gastrulation and for normal head, eye, and brain development (see PMID: 28662698). Consistent with the mouse model, knockdown of maternal <i>Mov10</i> in <i>Xenopus</i> led to defects in gastrulation and the development of notochord and paraxial mesoderm and a failure to neurulate (see PMID: 29266590).
17-2799	<i>PLXNA3</i>	GenBank: NM_017514.5: c.1997G>A:p.Arg666His	Hemi	Epilepsy (generalized absence seizures), mild memory deficits, and history of IUGR during pregnancy	(1) The nature of the variant (predicted deleterious) and (2) the nature of the gene (PLI: 0.98). It was demonstrated that Plexin A3 is involved in semaphorin 3F-mediated oligodendrocyte precursor cell migration (see PMID: 23063687), contributes to <i>Sema3F</i> and <i>Sema3A</i> signaling, regulates the development of hippocampal axonal projections <i>in vivo</i> (see PMID: 11683995), mediates neuronal apoptosis during dorsal root ganglia development (see PMID: 19020035), and regulates motor axonal branch morphogenesis (see PMID: 23349787).
18-1411	<i>PLXNA3</i>	GenBank: NM_017514.5: c.2623C>T:p.Arg875Trp	Hemi	Intellectual disability, autistic features, and has a twin (18-1631) with same condition	(1) The nature of the variant (predicted deleterious) and (2) the nature of the gene (PLI: 0.98). It was demonstrated that Plexin A3 is involved in semaphorin 3F-mediated oligodendrocyte precursor cell migration (see PMID: 23063687), contributes to <i>Sema3F</i> and <i>Sema3A</i> signaling, regulates the development of hippocampal axonal projections <i>in vivo</i> (see PMID: 11683995), mediates neuronal apoptosis during dorsal root ganglia development (see PMID: 19020035), and regulates motor axonal branch morphogenesis (see PMID: 23349787).
17-6562	<i>PTPN12</i>	GenBank: NM_001131009.1: c.722C>A:p.Pro241His	Het	GDD, failure to thrive, microcephaly, and epilepsy	(1) The nature of the variant (predicted deleterious <i>in silico</i>) and (2) the nature of the gene (pLI 0.99). Mutations in other family members, e.g., <i>PTPN23</i> and <i>PTPN11</i> , are identified in individuals with intellectual disability and other neurodevelopmental disorders (see PMID: 25558065, PMID: 29090338, and PMID: 28957739).

(Continued on next page)

Table 1. Continued

ID	Gene	Variants(s)	Zygoty	Phenotype	Justification
17-8496	<i>PTPN12</i>	GenBank: NM_002835.3: c.2282-34A>T	Hom	GDD and nonspecific MRI findings	(1) The nature of the variant (predicted deleterious, within autozygome) and (2) the nature of the gene (pLI 0.99). Mutations in other family members, e.g., <i>PTPN23</i> and <i>PTPN11</i> , are identified in individuals with intellectual disability and other neurodevelopmental disorders (see PMID: 25558065, PMID: 29090338, and PMID: 28957739).
18-0081	<i>RASIP1</i>	GenBank: NM_017805.2: c.2325G>C:p.Leu775Phe	Het	Microcephaly and fibular hemimelia	(1) The nature of the variant (predicted deleterious) and (2) the nature of the gene (PLI: 0.97). <i>RASIP1</i> is a dynamic EPAC1-RAP1 signaling effector that controls actin bundling and restricts junction remodeling <i>in vitro</i> and <i>in vivo</i> , and it is required for stabilizing nascent patent blood vessels in both mice and zebrafish (see PMID: 23886837). It was reported that the distribution of the intersegmental arteries plays a decisive role in the formation of the definitive vertebral body anlage during the stage of resegmentation and early chondrification, and any abnormal distribution of the arteries might induce malformations (see PMID: 6797230).
REQ18-1889	<i>RASIP1</i>	GenBank: NM_017805.2: c.1193_1196delATGT: p.Tyr398Ter	Het	Butterfly vertebrae, bilateral fused ribs, and diaphragmatic anomaly	(1) The nature of the variant (predicted deleterious) and (2) the nature of the gene (PLI: 0.97). <i>RASIP1</i> is a dynamic EPAC1-RAP1 signaling effector of that controls actin bundling and restricts junction remodeling <i>in vitro</i> and <i>in vivo</i> , and it is required for stabilizing nascent patent blood vessels in both mice and zebrafish (see PMID: 23886837). It was reported that the distribution of the intersegmental arteries plays a decisive role in the formation of the definitive vertebral body anlage during the stage of resegmentation and early chondrification and any abnormal distribution of the arteries might induce malformations (see PMID: 6797230).
17-5563	<i>SMG8</i>	GenBank: NM_018149.6: c.623A>G:p.His208Arg	Hom	Microcephaly, intellectual disability, cataract, and neck hyperpigmentation	(1) The nature of the variant (predicted deleterious, within autozygome) and (2) the nature of the gene (this is a nonsense-mediated mRNA decay factor). Mutations in the NMD complex have been shown to result in multisystem involvement (PMID: 27018474). Recessive inheritance was confirmed by parental (17-5564 and 17-5565) whole-exome sequencing. An affected sibling (17-5566) is also homozygous for this variant.
REQ18-0840	<i>SMG8</i>	GenBank: NM_018149.6: c.437_438insA: p.Ser146ArgfsTer13	Hom	Growth retardation and/or short stature, microcephaly, fine motor delay, ventricular septal defect, failure to thrive, and facial dysmorphism	(1) The nature of the variant (predicted deleterious, within autozygome) and (2) the nature of the gene (this is a nonsense-mediated mRNA decay factor). Mutations in the NMD complex have been shown to result in multisystem involvement (PMID: 27018474).

(Continued on next page)

Table 1. Continued

ID	Gene	Variant(s)	Zygoty	Phenotype	Justification
17-3980	<i>SMPD4</i>	GenBank: NM_001171083.2: c.1471-28_1477del	Hom	Bilateral clenched hands and talipes, IUGR, partial absence of corpus callosum, and family history of three neonatal deaths with similar features	(1) The nature of the variant (predicted deleterious, within autozygome) and (2) <i>SMPD4</i> , a bona fide sphingomyelinase in the ceramide pathway, catalyzes the hydrolysis of membrane sphingomyelin to form phosphorylcholine and ceramide (PMID: 16517606). Interestingly, inactivation or knockout of another sphingomyelinase of the ceramide pathway, <i>SMPD3</i> , led to growth inhibition, apoptosis, retarded development, and ultimately to a lethal, autosomal-recessive form of osteogenesis imperfecta, skeletal malformations, dwarfism, and severe chondrodysplasia as a result of the deficient sphingomyelinase activity (PMID: 16025116 and PMID: 27882938).
17-6035	<i>SMPD4</i>	GenBank: NM_017751.4: c.390_406del: p.Pro131LeufsTer2	Hom	Failure to thrive, fine and gross motor delay, brain atrophy, syndactyly, hypoplasia of phalanges, and short metacarpal bones	(1) The nature of the variant (predicted deleterious, within autozygome) and (2) <i>SMPD4</i> , a bona fide sphingomyelinase in the ceramide pathway, catalyzes the hydrolysis of membrane sphingomyelin to form phosphorylcholine and ceramide (PMID: 16517606). Interestingly, inactivation or knockout of another sphingomyelinase of the ceramide pathway, <i>SMPD3</i> , led to growth inhibition, apoptosis, retarded development, and ultimately to a lethal, autosomal-recessive form of osteogenesis imperfecta, skeletal malformations, dwarfism, and severe chondrodysplasia as a result of the deficient sphingomyelinase activity (PMID: 16025116 and PMID: 27882938).
17-4956	<i>TP73</i>	GenBank: NM_001126242.2: c.1163delT: p.Leu388HisfsTer151	Hom	Lissencephaly and hypotonia	(1) The nature of the variant (predicted deleterious, within autozygome) and (2) the loss of p73 leads to the disappearance of the Cajal-Retzius (CR) neurons in the cortical marginal zone and hippocampal molecular layer, and this could underlie the hippocampal dysgenesis, the hydrocephalus, and the abnormalities in the pheromone sensory pathways in p73 mice (PMID: 10716451).
17-6638	<i>TP73</i>	GenBank: NM_001126240.2: c.847C>T: p.Gln283Ter	Hom	Fine and gross motor delay, speech delay, cleft lip and/or palate, cortical dysplasia, pachygyria, and strabismus	(1) The nature of the variant (predicted deleterious, within autozygome) and (2) the loss of p73 leads to the disappearance of the Cajal-Retzius (CR) neurons in the cortical marginal zone and hippocampal molecular layer, and this could underlie the hippocampal dysgenesis, the hydrocephalus, and the abnormalities in the pheromone sensory pathways in p73 mice (PMID: 10716451).
17-6690	<i>UNC5A</i>	GenBank: NM_133369.2: c.1309C>T:p.Arg437Ter	Hom	Failure to thrive, microcephaly, GDD, hearing loss, periventricular leukomalacia, and seizures	(1) The nature of the variant (predicted deleterious, within autozygome) and (2) the nature of the gene (<i>UNC-5</i> , a transmembrane protein with immunoglobulin and thrombospondin type 1 domains) guides cell and pioneer axon migrations in <i>C. elegans</i> (see PMID: 1384987).

(Continued on next page)

Table 1. Continued

ID	Gene	Variant(s)	Zygoty	Phenotype	Justification
17-7961	UNC5A	GenBank: NM_133369.2: c.1550T>A:p.Ile517Asn	Hom	Congenital heart disease, failure to thrive, microcephaly, GDD, nystagmus, café au lait spots, and seizures.	(1) The nature of the variant (predicted deleterious, within autozygote) and (2) the nature of the gene: UNC5A belongs to a family of netrin-1 receptors thought to mediate the chemo repulsive effect of netrin-1 on specific axons (see PMID: 1384987). A loss-of-function variant of UNC5A is identified in an individual with failure to thrive, microcephaly, GDD, hearing loss, periventricular leukomalacia, and seizures (see 17-6690).
17-2828-B	USO1	GenBank: NM_003715.3: c.46G46G>C: p.Val16LeuVal161Leu	Hom	Developmental regression, retinal degeneration, and suspected NCL	(1) The nature of the variant (present within autozygote, predicted deleterious <i>in silico</i>) and (2) the nature of the gene: USO1, a vesicle transport factor, is a peripheral membrane protein that recycles between the cytosol and the Golgi apparatus. Mice lacking USO1 exhibit disruption of Golgi structure and early embryonic lethality (see PMID: 23185636 and MGI: 1929095).
17-6599	USO1	GenBank: NM_003715.3: c.46G46G>C: p.Val16LeuVal161Leu	Hom	Developmental regression, retinal degeneration, and suspected NCL	(1) The nature of the variant (present within autozygote, predicted deleterious <i>in silico</i>) and (2) the nature of the gene: USO1, a vesicle transport factor, is a peripheral membrane protein that recycles between the cytosol and the Golgi apparatus. Mice lacking USO1 exhibit disruption of Golgi structure and early embryonic lethality (see PMID: 23185636 and MGI: 1929095).
17-8522	USO1	GenBank: NM_003715.3: c.2514T>G:p.Ile739Arg	Hom	GDD, microcephaly, epilepsy, optic atrophy, and suspected NCL	(1) The nature of the variant (present within autozygote, predicted deleterious <i>in silico</i>) and (2) the nature of the gene: USO1, a vesicle transport factor, is a peripheral membrane protein that recycles between the cytosol and the Golgi apparatus. Mice lacking USO1 exhibit disruption of Golgi structure and early embryonic lethality (see PMID: 23185636 and MGI: 1929095).

Abbreviations are as follows: Hom = homozygous, Het = heterozygous, Hemi = hemizygous, IUGR = intrauterine growth restriction, MRI = magnetic resonance imaging, NCL = neuronal ceroid lipofuscinosis, and GDD = global developmental delay

by the corresponding knockout mouse.²⁰ *Katnal1* mutant mice display behavioral, cognitive, and structural brain anomalies, which are strikingly similar to those in the individual we report who has a truncating variant in *KATNAL1* (MIM: 614764).²¹ Similarly, the neurological phenotype in the child with a homozygous variant in *NRDC* (MIM: 602651) is sufficiently recapitulated by the *Nrdc*^{-/-} mouse to support the candidacy of this gene.²²

The third level of evidence was available biological data on the gene of interest. For example, all oral-facial-digital (OFD) syndrome (MIM: 311200)- and Meckel-Gruber syndrome (MIM: 249000)-related genes are known to play a role in ciliary biology.²³ Thus, the homozygous truncations in *CCDC96* and *CEP29* (MIM: 617728) were attractive candidates, respectively, given their role in ciliogenesis.^{24–26}

In addition, our data provide high throughput “confirmation” of 64 genes (40 recessive, 21 dominant, and three X-linked) that have previously been proposed as candidates

but are either not yet listed with OMIM phenotypes or have a listing that is based on a single study. These are listed along with the observed and previously reported phenotypes in [Table S2](#). Interestingly, several of these genes were proposed as candidates from the same population, i.e., Saudis. These include *TBC1D32* (MIM: 615867)-related OFD IX (MIM: 258865),²⁷ *PGAP3* (MIM: 611801)-related Toriello Carey syndrome (MIM: 615716),²⁸ *LACC1* (MIM:613409)-related arthropathy and Crohn disease (MIM: 266600),²⁹ *PITX3* (MIM: 602669)-related autosomal-recessive anterior segment dysgenesis and microphthalmia,³⁰ *PPP1R21* (MIM: 618159)-related intellectual disability,³¹ *SMG9* (MIM: 613176)-related heart and brain malformation syndrome,³² *ARMC9* (MIM: 617622)-related Joubert syndrome (MIM: 617622),³³ *DNAJC17* (MIM: 616844)-related syndrome of retinitis pigmentosa and immunodeficiency,³⁴ and *CLHC1*-related myopathy.⁸ Although we have previously reported a homozygous truncating variant in *PRKD1* (MIM: 605435) in a family with non-syndromic

Table 2. List of Genes Previously Reported Only in the Context of Dominant Disorders but Were Found to Harbor Likely Deleterious Recessive Forms of Genes in this Cohort

ID	Gene	Variant(s)	Zygoty	Dominant phenotype	Observed recessive phenotype	Phenotype comparison
17-6650	<i>ATP6V1B2</i>	GenBank: NM_001693.3: c.1001T>C:p.Ile334Thr	Hom	Zimmermann-Laband syndrome 2	Distinct cutis laxa syndrome identical to that described for <i>ATP6V1E1</i> (PMID: 27023906)	Distinct
16-2726	<i>ATP6V1B2</i>	GenBank: NM_001693.3: c.1001T>C:p.Ile334Thr	Hom	Zimmermann-Laband syndrome 2	Distinct cutis laxa syndrome identical to that described for <i>ATP6V1E1</i> (PMID: 27023906)	Distinct
REQ18-1700	<i>BAAT</i>	GenBank: NM_001127610.1: c.2T>A;p.?	Hom	Cholestatic liver disease	Cholestatic liver disease	Similar
17-5309	<i>MYH11</i>	GenBank: NM_002474.2: c.3424C>T:p.Arg1142Ter	Hom	Aortic aneurysm and familial thoracic 4	Megacystis, bilateral hydronephrosis, absent stomach, borderline polyhydramnios, microcolon, and intestinal hypoperistalsis	Distinct
17-0807	<i>MYH11</i>	GenBank: NM_022844.2: c.1033+1G>A	Hom	Aortic aneurysm and familial thoracic 4	Megacystis	Distinct
18-1351	<i>NOTCH3</i>	GenBank: NM_000435.3: c.1790G>C:p.Cys597Ser	Hom	CADASIL (cerebral autosomal dominant arteriopathy with subcortical infarcts and leukoencephalopathy)	Neuropsychiatric disturbances, migraine headache, periventricular leukomalacia and temporal lobe pole hyperintensity. Suspected CADASIL	Similar
17-5492	<i>PITX3</i>	GenBank: NM_005029.3: c.640_656del: p.Ala214ArgfsTer42	Hom	Anterior segment dysgenesis	GDD, microphthalmia, blindness, cataracts, and spastic quadriplegia	More severe
17-3180	<i>POU4F3</i>	GenBank: NM_002700.2: c.488delA:p.His163ProfsTer41	Hom	Hearing loss (onset between the second and sixth decades)	Bilateral, prelingual, profound sensorineural hearing loss	More severe
16-3003	<i>PPM1D</i>	GenBank: NM_003620.3: c.939_940delTG: p.Ser313ArgfsTer28	Hom	Intellectual developmental disorder with gastrointestinal difficulties and high pain threshold	GDD and epilepsy	Similar
17-4393	<i>SLC4A10</i>	GenBank: NM_022058.3: c.2773-2A>C	Hom	Complex partial epilepsy and mental retardation	Intellectual disability and epilepsy	Similar

Abbreviations are as follows: Hom = homozygous and GDD = global developmental delay.

truncus arteriosus,³⁵ OMIM currently only lists this gene in the context of a syndrome of ectodermal dysplasia with congenital heart disease on the basis of *de novo*, heterozygous missense changes. Here, we show that individual REQ18-1959, who has a different homozygous truncating variant and an associated, non-syndromic, complex congenital heart disease, not only provides confirmation that *PRKD1* is indeed associated with recessive, non-syndromic truncus arteriosus but also expands the congenital-heart-disease phenotype associated with this gene. Although the majority of the “confirmatory” cases have phenotypes that are similar to those originally reported, some deviate significantly and are worth highlighting. These include *TBC1D32* (MIM: 615867)-related holoprosencephaly, *NDUFB10* (MIM: 603843)-related non-immune hydrops fetalis, and a lack of liver involvement in two brothers with *LARS* (MIM: 151350)-related epileptic encephalopathy, microcephaly, and global developmental delay (Table S2).

Identification of Unusual Mutational Mechanisms

The discovery of recessive forms of genes previously associated only with dominant disorders has the potential to unravel interesting mutational mechanisms for the associated phenotypes.³⁶ Table 2 lists several recessive forms of genes that had only been described in the context of dominant phenotypes. The recessive phenotypes ranged from identical, e.g., for *SLC4A10* (MIM: 605556)-related intellectual disability and epilepsy; to earlier onset, e.g., for *POU4F3* (MIM: 602460)-related prelingual hearing loss; to more severe, e.g., for *PITX3* (MIM: 602669)-related eye malformation and global developmental delay; to completely distinct, e.g., for *MYH11* (MIM: 160745)-related megacystis, microcolon, and intestinal hypoperistalsis. One remarkably distinct recessive phenotype that is worth highlighting is *ATP6V1B2* (MIM: 606939)-related cutis laxa syndrome that is identical to the one we described previously in siblings with a homozygous *ATP6V1E1* (MIM: 108746) variant, even though dominant

Table 3. ^aList of Prenatal Cases with Available DNA from the Fetus

ID	Result	Gene	Variant(s)	Zygoty	LOF	Observed Fetal Phenotype	Phenotype Category
17-0422	Solved	<i>ALG9</i>	GenBank: NM_001077690.1: c.430T>C:p.Cys144Arg	Hom	–	Cardiomegaly, pericardial effusion, a thick nuchal fold, oligohydramnios, hydronephrosis, and a small bladder	Typical
17-6079	Solved	<i>ATP11C</i>	GenBank: NM_173694.4: c.1675+2T>C	Hemi	y	Fetus with hydrops fetalis.	Distinct prenatal presentation
17-3514	Solved	<i>BBS1</i>	GenBank: NM_024649.4: c.830+2T>C	Hom	y	Severe oligohydramnios and enlarged echogenic kidney with cyst bilaterally, most likely ARPKD	Typical
17-1195	Ambiguous (candidate gene)	<i>BRAP</i>	GenBank: NM_006768.4: c.199C>T:p.Arg67Ter	Hom	y	Non-immune hydrops fetalis	NA (first case)
16-3155	Solved	<i>CANT1</i>	GenBank: NM_138793.3: c.902_906dup: (p.Ser303AlafsTer21)	Hom	y	Skeletal dysplasia	Typical
REQ18-1150	Solved	<i>CC2D2A</i>	GenBank: NM_001080522.2: c.4531T>C:p.Trp1511Arg	Hom	–	Enlarged kidneys and occipital encephalocele	Typical
18-2311	Solved	<i>CEP55</i>	GenBank: NM_001127182.1: c.807T>G:p.Tyr269Ter	Hom	y	Renal dysplasia, anhydraninos, and hydranencephaly	Typical
17-2713	Ambiguous (VUS)	<i>CHRNA1</i>	GenBank: NM_000079.3: c.254T>C:p.Leu85Pro	Hom	–	Non-immune hydrops fetalis	Typical
17-0633	Ambiguous (VUS)	<i>CHRNG</i>	GenBank: NM_005199.5: c.1180C>G:p.Pro394Ala	Hom	–	Club foot, oligohydramnios, cystic hygroma and/or increased nuchal thickness, skin edema, and fixed flexion in an upper limb	Typical
17-5074	Solved	<i>CNTNAP1</i>	GenBank: NM_003632.2: c.1903C>T:p.Arg635Ter	Hom	y	Polyhydramnios, absent stomach, and a mother with history of IUFDs	Typical
17-3078	Solved	<i>COL1A1</i>	GenBank: NM_000088.3: c.2399G>A:p.Gly800Glu	<i>De novo</i>	–	Skeletal dysplasia	Typical
REQ18-4214	Solved	<i>ECHS1</i>	GenBank: NM_004092.3: c.88+5G>A:	Het (carrier)	y	Normal (tested with the parents, who had a history of neonatal deaths with severe lactic acidosis but no available DNA. See “Molecular Autopsy by Proxy” for details.)	NA
17-3698	Solved	<i>ERCC5</i>	GenBank: NM_001204425.1: c.3789delT: p.Asp1263GlufsTer24	Hom	y	Fetus with a dilated third ventricle, dilated cisternae magna, hypertelorism, micrognathia, generalized skin edema, moderately enlarged heart, hydrothorax, bilateral talipes, bilateral clenched hands, and fixed position (hip flexed and upper limbs flexed)	Distinct prenatal presentation
17-5348	Solved	<i>ETFA</i>	GenBank: NM_000126.3: c.883-1_885delGACA	Hom	y	Pericardial effusion, echogenic kidney, hydrocephalus, and a small chest	Distinct prenatal presentation
18-1181	Solved	<i>FLVCR2</i>	GenBank: NM_001195283.1: c.596T>A:p.Val199Glu	Hom	–	Hydrocephalus, dilated cisterna magna, hypoplastic cerebellum, and brain atrophy	Typical
17-3511	Ambiguous (candidate gene)	<i>FRMD6</i>	GenBank: NM_001267046.1: c.262G>A:p.Ala88Thr	<i>De novo</i>	–	IUGR and microcephaly.	N/A (first case)
17-0224	Solved	<i>FTO</i>	GenBank: NM_001080432.3: c.871C>T:p.Gln291Ter	Hom	y	Dandy-Walker malformation, IUGR, and polyhydramnios	Typical
18-2474	Solved	<i>GUSB</i>	GenBank: NM_000181.4: c.307C>T:p.Arg103Trp	Hom	–	Fetus with non-immune hydrops	Typical

(Continued on next page)

Table 3. Continued

ID	Result	Gene	Variant(s)	Zygoty	LOF	Observed Fetal Phenotype	Phenotype Category
18-2404	Solved	<i>HSPG2</i>	GenBank: NM_001291860.1: c.12462delT; p.Leu4155CysfsTer30	Hom	y	Skeletal dysplasia	Typical
17-0425	Ambiguous (candidate gene)	<i>IL6ST</i>	GenBank: NM_001190981.1: c.841C>T;p.Arg281Ter	Hom	y	Brain malformation, short long bones, kidney malformation, and unilateral MCDK	NA (first case)
17-0409	Solved	<i>KIF19</i>	GenBank: NM_153209.3: c.788G>A;p.Arg263His; NM_153209.3:c.1906T>G: p.Tyr636Asp	Het (CMP)	–	abnormal “strawberry” head shape, absent corpus callosum, and brain ventriculomegaly	NA (first case; see PMID: 28749478)
17-0807	Solved	<i>MYH11</i>	GenBank: NM_022844.2: c.1033+1G>A	Hom	y	Megacystis	Distinct prenatal presentation
17-5309	Solved	<i>MYH11</i>	GenBank: NM_002474.2: c.3424C>T;p.Arg1142Ter	Hom	y	Megacystis, bilateral hydronephrosis, absent stomach, borderline polyhydramnios, microcolon, and intestinal hypoperistalsis	Distinct prenatal presentation
17-2355	Solved	<i>MYO9A</i>	GenBank: NM_006901.4: c.1537C>T;p.Arg513Ter	Hom	y	Hydrocephalus	Distinct prenatal presentation
17-4600	Solved	<i>MYSM1</i>	GenBank: NM_001085487.2: c.1168G>T;p.Glu390Ter	Hom	y	Non-immune hydrops fetalis	Distinct prenatal presentation
17-2505	Solved	<i>NDUFB10</i>	GenBank: NM_004548.2: c.373_375delCAG; p.Gln125del	Hom	–	Non-immune hydrops fetalis and died after birth	Distinct prenatal presentation
17-4671	Solved	<i>PEX5</i>	GenBank: NM_000319.4: c.1554T>G;p.Asn518Lys	Hom	–	Multicystic kidney, dilated cisterna magna, ventriculomegaly, and a positive family history	Distinct prenatal presentation
17-6282	Solved	<i>PHGDH</i>	GenBank: NM_006623.3: c.1030C>T;p.Arg344Ter	Hom	y	Non-immune hydrops fetalis	Phenotypic expansion
17-5922	Solved	<i>PIEZO1</i>	GenBank: NM_001142864.4: c.5013_5016delGGCG; p.Ala1672CysfsTer59	Hom	y	Non-immune hydrops	Typical
17-2819	Solved	<i>PIEZO1</i>	GenBank: NM_001142864.4: c.6372G>C;p.Trp2124Cys	Hom	–	Hydrops fetalis	Typical
17-4408	Ambiguous (VUS)	<i>POLG</i>	GenBank: NM_001126131.1: c.2606G>A;p.Arg869Gln	Hom	–	Polyhydramnios, contractures, scoliosis, and kyphosis	Distinct prenatal presentation
18-1761	Solved	<i>POMT1</i>	GenBank: NM_001077366.1: c.118+1G>T	Hom	y	Fetus with severe ventriculomegaly	Typical
17-5897-B	Solved	<i>PTPN11</i>	GenBank: NM_002834.4: c.781C>T;p.Leu261Phe	<i>De novo</i>	–	Non-immune hydrops fetalis	Phenotypic expansion
17-1571	Ambiguous (VUS)	<i>RTEL1</i>	GenBank: NM_001283009.1: c.3730T>C;p.Cys1244Arg	Hom	–	Fetus with severe IUGR and oligohydramnios	Phenotypic expansion
REQ18-3059	Ambiguous (VUS)	<i>SMAD6</i>	GenBank: NM_005585.4: c.818A>G;p.Glu273Gly	Hom	–	Severe non-immune hydrops fetalis with a family history of a previously affected pregnancy	Distinct prenatal presentation
17-3980	Ambiguous (candidate gene)	<i>SMPD4</i>	GenBank: NM_001171083.2: c.1471-28_1477del	Hom	y	Bilateral clenched hands and talipes, IUGR, partial absence of the corpus callosum, and a family history of three neonatal deaths with similar features	NA (first case)
17-4710	Solved	<i>STRA6</i>	GenBank: NM_001142617.1: c.1594C>T;p.Arg532Ter	Hom	y	Hypoplastic left heart syndrome	Distinct prenatal presentation

(Continued on next page)

Table 3. Continued

ID	Result	Gene	Variant(s)	Zygoty	LOF	Observed Fetal Phenotype	Phenotype Category
17-3069-A	Ambiguous (candidate gene)	<i>STXBP3</i>	GenBank: NM_007269.4: c.622G>A:p.Ala208Thr	Hom	–	Arthrogryposis multiplex congenita	NA (first case)
17-0889	Solved	<i>TBC1D32</i>	GenBank: NM_152730.6: c.1372+1G>T	Hom	y	Previous termination of 15/32 with holoprosencephaly, cyclops, cleft lip, ventricular septal defect, agenesis of the corpus callosum, club foot, and a sandal gap (no sample)	Phenotypic expansion
17-0286	Solved	<i>TMEM130</i>	GenBank: NM_001134450.1: c.23G>A:p.Arg8His	Hom	–	Pericardial effusion, enlarged kidney, occipital encephalocele, and suspected to have Meckel-Gruber syndrome	Typical
17-4015	Ambiguous (VUS)	<i>WDR34</i>	GenBank: NM_052844.3: c.1061C>T:p.Thr354Met	Hom	–	Fetus with IUGR and skeletal dysplasia	Typical

Abbreviations are as follows: LOF = loss of function, y = yes, Hom = homozygous, Het = heterozygous, Hemi = hemizygous, IUGR = intrauterine growth restriction, ARKPD = autosomal-recessive polycystic kidney disease, VUS = variant of unknown significance, IUFD = intrauterine fetal death, NA = not applicable, MCDK = multicystic dysplastic kidney, and CMP = compound.

^aNegative instances can be found in [Table S7](#).

ATP6V1B2 (MIM: 606939) variants are known to cause a distinct phenotype known as Zimmermann-Laband syndrome 1 (MIM: 135500).³⁷ Although parental gonadal mosaicism is known to occur in consanguineous families,^{38–40} the family of first-cousin parents and three children who have classical Rubinstein-Taybi syndrome (MIM: 180849) and share the same truncating variant in *CREBBP* (MIM: 600140) is a reminder that CES in apparently recessive pedigrees should be carefully reviewed for that possibility. More unusual is the observation of parental gonadal mosaicism in *GNAOI* (MIM: 139311) in two families in our cohort who have *GNAOI*-related epileptic encephalopathy. This increases to three the number of families with gonadal mosaicism for this recently described gene, and only one family had no documented gonadal mosaicism.⁴¹ *De novo* point mutations in the context of autosomal-recessive disorders have very rarely been reported.³⁹ In our cohort, we show that one individual with Joubert syndrome (MIM: 614615) harbored a compound-heterozygous mutation in *C5orf42* (MIM: 614615) with one inherited variant, whereas the other has arisen *de novo*, although we cannot rule out paternal gonadal mosaicism. In addition, we show that one infant with cholestatic liver failure harbored a homozygous truncating variant in *BAAT* (MIM: 602938), a gene that has been implicated in the context of cholestatic liver disease as a potential modifier on the basis of a single missense variant.

Patterns of Mutations in Prenatal Cases

Despite a comparable diagnostic yield in pre- (30 out of 65, 46.2%) and post-natal cases, we note that an even higher percentage of prenatal instances are autosomal recessive (87%), and the majority of these (65.4%) represent homozygous probable loss of function ([Table 3](#)). The severe, and often lethal, prenatal presentation of these loss-of-function events often represents a phenotypic expansion of

the corresponding genes ([Table 3](#)). One example is the homozygous truncating variant of *MYO9A* (MIM: 604875) in a fetus with severe hydrocephalus that appears to mirror the phenotype observed in *Myo9* knockout mice.⁴² This is in contrast to the neuromuscular phenotype observed in the few reported instances of bi-allelic missense variants in this gene. Half of the individuals referred for prenatal genetic counseling (80 out of 162, 49.4%) came from couples with a history of one or more deceased children (or pregnancy losses) for whom no DNA was available for testing. [Table S8](#) shows that this approach of “molecular autopsy by proxy”⁴³ provided a compelling etiology in the majority of instances (45 out of 80, 56.3%). As expected by the nature of this approach, all the variants were recessive. Again, loss-of-function events were common in this sub-cohort that had lethal phenotypes (28 out of 45, 62.2%).

Allelic Series and Phenotypic Expansion

[Table 4](#) lists instances where the observed phenotypes differ noticeably from those reported in the literature (multi-locus phenotypes have been excluded). A few instances are worth highlighting. We have previously reported an *IGFBP7* (MIM: 602867)-related syndrome characterized by retinal artery microaneurysm, supra-aortic stenosis, and potential liver involvement.⁴⁴ Individual 17-0163 presented with ductal plate malformation with resulting liver cirrhosis, ischemic stroke, and aortic coarctation, features that add to the phenotypic delineation of the syndrome. Phenotypic expansion was not limited to recessive disorders, however, as exemplified by individual 17-4116. This individual harbors a truncating variant in *STAT3* (MIM: 102582) (no truncating variants have been reported in this gene to our knowledge), and this might explain the unexpectedly severe brain vascular phenotype in the form of Moyamoya disease. Similarly, the individual with a *de novo* truncating variant in *TCF12* (MIM: 600480)

Table 4. List of Individuals Whose Phenotypes Represent an Expansion of the Published Phenotypes

ID	Result	Gene	Variant(s)	Zygoty	Phenotypic Expansion Elements
REQ18-2038	Pathogenic or likely pathogenic	<i>ACO2</i>	GenBank: NM_001098.2: c.1187C>T;p.Ser396Leu	Hom	Severe neonatal hypotonia and SMA-like presentation
17-6786	Pathogenic or likely pathogenic	<i>ADAT3</i>	GenBank: NM_138422.4: c.430G>A;p.Val144Met	Hom	Tetralogy of Fallot
17-9070	Pathogenic or likely pathogenic	<i>ATAD3A</i>	GenBank: NM_018188.4: c.1410+1G>A	Hom	Severe fetal presentation
17-6079	Pathogenic or likely pathogenic	<i>ATP11C</i>	GenBank: NM_173694.4: c.1675+2T>C	Hemi	Non-immune hydrops fetalis
17-8295	Pathogenic or likely pathogenic	<i>BEAN1</i>	GenBank: NM_001136106.4: c.180C>G;p.Tyr60Ter	Het	Intellectual disability and epilepsy
17-2136	Pathogenic or likely pathogenic	<i>CACNA1G</i>	GenBank: NM_198384.2: c.4759+1G>A	Het	Microcephaly
17-2687	Pathogenic or likely pathogenic	<i>CCNO</i>	GenBank: NM_021147.4: c.964delC;p.Leu322CysfsTer5	Hom	Infertility
17-2688	Pathogenic or likely pathogenic	<i>CCNO</i>	GenBank: NM_021147.4: c.964delC;p.Leu322CysfsTer5	Het	Infertility
17-2584	Pathogenic or likely pathogenic	<i>CHRNA1</i>	GenBank: NM_005199.5: c.1366_1367delAG;p.His457LeufsTer2	Hom	Significant brain involvement
17-1482	Pathogenic or likely pathogenic	<i>COL4A1</i>	GenBank: NM_001303110.1: c.761delT;p.Phe254SerfsTer60	Het	Moyamoya disease
17-3698	Pathogenic or likely pathogenic	<i>ERCC5</i>	GenBank: NM_001204425.1: c.3789delT;p.Asp1263GlufsTer24	Hom	Severe fetal presentation
17-0163	Pathogenic or likely pathogenic	<i>IGFBP7</i>	GenBank: NM_001553.2:c.830-1G>A	Hom	Ischemic stroke, coarctation of aorta, and ductal plate malformation with resulting liver cirrhosis
17-4391	Pathogenic or likely pathogenic	<i>KDM1A</i>	GenBank: NM_015013.3: c.782_783insA;p.Ile262TyrfsTer7	Het	Lack of a cleft
17-2505	Pathogenic or likely pathogenic	<i>NDUFB10</i>	GenBank: NM_004548.2: c.373_375delCAG;p.Gln125del	Hom	Fetal presentation with non-immune hydrops fetalis
18-0283	Pathogenic or likely pathogenic	<i>PARS2</i>	GenBank: NM_152268.3: c.283G>A;p.Val95Ile	Hom	Lack of lactic acidemia and liver involvement (see also 17-8126 and 17-3573 in Table S1. These individuals have the same variant and also lack lactic acidemia and liver involvement.)
17-7203	Pathogenic or likely pathogenic	<i>PEX16</i>	GenBank: NM_004813.2: c.954delG;p.Arg318GlyfsTer39	Hom	Lack of the typical neonatal presentation and presence of hypertonia instead
REQ18-1959	Pathogenic or likely pathogenic	<i>PRKD1</i>	GenBank: NM_002742.2: c.2554G>T;p.Glu852Ter	Hom	Much more severe and complex congenital heart disease (pulmonary atresia, ventricular septal defect, major aortopulmonary collateral artery, patent ductus arteriosus, and hypertrophic cardiomyopathy; on prostaglandin with biventricular hypertrophic cardiomyopathy)
18-0876	Pathogenic or likely pathogenic	<i>RARS2</i>	GenBank: NM_020320.4: c.1123G>A;p.Val375Met	Hom	Lack of pontocerebellar hypoplasia
17-5069	Pathogenic or likely pathogenic	<i>SCN5A</i>	GenBank: NM_001099405.1: c.5776C>T;p.Arg1926Ter	Het	Significant skeletal-muscle involvement and no evidence of cardiac involvement
17-4396	Pathogenic or likely pathogenic	<i>SMAD3</i>	GenBank: NM_001145103.1: c.72delG;p.Arg25GlyfsTer47	Het	Severe intracranial vessel disease
17-1888	Pathogenic or likely pathogenic	<i>SMARCA1</i>	GenBank: NM_001127207.1: c.1824delT;p.Phe608LeufsTer26	Hom	Significant brain involvement
17-1889	Pathogenic or likely pathogenic	<i>SMARCA1</i>	GenBank: NM_001127207.1: c.1824delT;p.Phe608LeufsTer26	Hom	Significant brain involvement
17-4116	Pathogenic or likely pathogenic	<i>STAT3</i>	GenBank: NM_003150.3: c.1454delA;p.Asn485ThrfsTer6	Het	Moyamoya disease

(Continued on next page)

Table 4. Continued

ID	Result	Gene	Variant(s)	Zygoty	Phenotypic Expansion Elements
17-4750	Pathogenic or likely pathogenic	<i>SURF1</i>	GenBank: NM_003172.3:c.588+1G>A	Hom	SMA-like presentation
17-4613	Pathogenic or likely pathogenic	<i>TCF12</i>	GenBank: NM_001306220.2:c.493G>T;p.Glu165Ter	<i>De novo</i>	Lack of craniosynostosis
17-6229	Pathogenic or likely pathogenic	<i>VIPAS39</i>	GenBank: NM_001193316.1:c.373A>T;p.Arg125Ter	Hom	Basal ganglia abnormalities

Abbreviations are as follows: Hom = homozygous, Het = heterozygous, Hemi = hemizygous, and SMA = spinal muscular atrophy.

completely lacks craniosynostosis, although he does have the developmental delay component of *TCF12*-related craniosynostosis 3.

Human Loss-of-Function Variants in GWAS Signals

The enrichment of our cohort for loss-of-function events allowed us to encounter such events in genes with only genome-wide association study (GWAS) links in the literature. In one consanguineous family of three children with non-syndromic, early-onset (<5yrs) morbid obesity, we identified a homozygous truncating variant in *APOBR* (MIM: 605220) (GenBank: NM_018690.3:c.1081_1087del:p.Glu361ProfsTer38). The finding of a likely null variant in *HEXA* (MIM: 606869) in an individual with early-onset Parkinson disease is less clear given the reported association between a carrier status for other lysosomal disorders and this adult-onset neurodegenerative disease.⁴⁵

Clinical Utility of Flash Whole-Exome Sequencing

Flash whole-exome sequencing (WES) was reserved for instances when timely molecular diagnosis was needed. Typically, these included instances of fetuses approaching the legal cutoff date of termination (18.5 weeks of gestation), instances when a decision to continue or withdraw aggressive measures of life-support was needed for individuals in the neonatal intensive care unit (NICU) and pediatric intensive care unit (PICU), and instances when children required urgent decisions about liver or bone marrow transplantation. Despite the extremely rapid nature of variant interpretation in Flash WES, the overall yield was comparable to regular WES (48.1% versus 43.3%). [Table S10](#) summarizes our experience with 54 individuals referred to us for Flash WES with various indications.

Founder Effect

[Table S6](#) lists all the founder variants that have been encountered in two or more affected individuals who are not known to be part of the same nuclear family but share the same phenotype and haplotype. Using the broader definition of founder variants (see [Material and Methods](#) for details), we found that 41.6% of the pathogenic or likely pathogenic variants qualify as founder variants. Importantly, several of these variants could only be up-

graded to pathogenic or likely pathogenic through this strong segregation. It is noteworthy that the contribution of founder variants to the overall pool of disease-causing variants has increased only slightly compared to our earlier pilot study involving ~350 exomes (41.6% versus 32.5%). Indeed, [Table S4](#) lists the variants from that study that were reclassified on the basis of new data from this study, and we note that only 12 could be upgraded to likely pathogenic. Several founder variants in [Table S6](#) are worth highlighting. For example, we have previously suggested on the basis of much smaller cohorts that the *ADAT3* (MIM: 615302) and *C12orf57* (MIM: 615140) founder variants are of comparable frequency.¹⁴ However, this cohort clearly shows that *ADAT3* is the single most common recessive cause of global developmental delay and intellectual disability in the country, accounting for 20 solved instances compared to 4 solved that were based on *C12orf57*. We also highlight the power of the founder effect in defining genotype-phenotype correlation for variants that would otherwise be classified as VUSs; for example, *ATP6V1B2*-related cutis laxa syndrome, which we observed in two “unrelated” individuals who have the same syndromic phenotype and share the same missense variant ([Table 2](#)).

Secondary Findings

The secondary findings we reported back were of two classes: (1) ACMG-recommended and (2) carrier status for KSMs (see above). The overwhelming majority of cases (1,971 out of 2,219, 88.8%) opted to receive secondary findings in the consent form. Consistent with our previous experience, the percentage of cases with ACMG secondary findings was small (n = 41, 2%), and the findings are listed in [Table S5](#). All of these individuals have been referred for full genetic counseling on the basis of published guidelines relevant to their results, and work is underway to characterize the outcome of these referrals. On the other hand, we have identified a very high carrier frequency of Saudi founder mutations; 697 individuals carry one KSM, 238 carry two KSMs, 56 carry three KSMs, and 15 carry four or more KSMs ([Figure S2](#)). We have also extended our analysis to parents and investigated the likelihood for parents to share the carrier status of a founder variant other than the one relevant to the disease in their offspring, i.e.,

unbiased analysis. We found that only 62 of 503 (12.3%) couples fall in this category (Figure S2).

Discussion

Large-scale CES studies have greatly improved our understanding of the human variome and its medical and clinical relevance. These studies, nearly always from outbred populations, have nearly saturated the morbid genome for the recurrently mutated dominant genes that are linked to human phenotypes in the loss-of-function state.⁴⁶ Despite their very large size, those studies suffer from the conspicuous underrepresentation of autosomal-recessive, disease-related genes. A very recent analysis of the 6,040 families from the Deciphering Developmental Disorders study estimated the contribution of recessive causes at 3.6%.⁴⁷ Consanguineous populations, on the other hand, possess a much greater power to unmask recessive, disease-causing alleles, and this discrepancy increases exponentially as the allele frequency decreases.⁴ For example, a rare recessive allele with a frequency of 0.001 will be observed in homozygosity only once per 1,000,000 individuals in an outbred population (q^2) but once per 41,494 individuals in the Saudi population that has an average inbreeding coefficient of 0.0241 (qF).¹⁶ Thus, despite the much smaller size compared to the DDD cohort, our cohort revealed a remarkably higher number of autosomal-recessive candidate genes. This large number of candidates, however, raises an interesting question about the rate at which the morbid genome is being saturated for autosomal-recessive, disease-related genes. In a previously reported pilot clinical exome study involving 347 families, a similar percentage of individuals was found to harbor potential autosomal-recessive candidate genes as in this study.¹⁴ It seems unlikely, therefore, that all autosomal-recessive disease genes will have been identified by 2020 as originally proposed by the International Rare Diseases Research Consortium (IRDRC).¹² Indeed, it seems likely that many additional thousands of affected individuals from consanguineous populations will have to be sequenced, especially in view of two observations made in this study: (1) the high contribution of “private” mutations that showed little decrement as we increased the number of tested individuals from 347 to >2,200 families and (2) the small percentage of candidate genes for which we were able to observe independent (confirmatory) mutational events. The central processing of CES was key for an internal “matchmaking” that allowed us to identify candidate genes with more than one hit, as well as to confirm founder disease-causing variants that were previously reported as candidates. To this end, we emphasize the tentative candidacy of the genes we propose on the basis of single mutational events, pending future confirmation.

A key advantage of the genomics-first approach taken in this study is made clear by the fact that the overwhelming

majority of individuals with solved diagnoses (77.9%) did not carry the correct clinical diagnosis when CES was requested. This is a vivid reminder of the lack of precision in the traditional clinical approach for individuals with suspected genetic diseases and the many missed opportunities for precision clinical management. It is interesting to note that the percentage of individuals that received the correct clinical diagnosis prior to molecular confirmation did not differ significantly ($p = 0.29$) between those evaluated by the genetic experts (18.6%, $n = 547$) and non-geneticists (23.5%, $n = 409$). This is consistent with a prior study in which we compared a traditional clinical approach to a genomics-first approach in >300 instances of intellectual disability and/or developmental delay where we found only 16% of affected individuals had received a clinical suspicion consistent with the molecular finding.¹¹ The limited sensitivity of clinical evaluation even by genetic experts probably reflects the established challenge of the extreme heterogeneity of Mendelian disorders. Our finding also challenges the view that genetic experts alone should request CES, because we do not see evidence that such a practice will lead to a significantly higher yield and, consequently, reduce costs. It is relevant to highlight here that our unusual study design, wherein we encouraged a “genomics-first” approach to maximize the cost-saving benefit of CES, should be taken into account when comparing our results to other studies in which affected individuals typically undergo a “reflex” CES after exhausting a series of other diagnostic tests.

Beyond the high throughput discovery and confirmation of candidate genes, our unique cohort has also provided additional insights. In particular, the high throughput creation of recessive allelic series by virtue of consanguinity loops allowed us to observe important phenotypic aspects previously unknown for the respective genes. The documentation of recessive forms of dominant genes has a significant impact on the interpretation of likely deleterious variants of dominant genes in individuals with no apparent phenotype. The tendency to classify such occurrences as “incomplete penetrance” should be carefully balanced by the growing appreciation that these might indeed represent genuinely recessive forms of genes.³⁶ The impact on the calculation of recurrence risk cannot be overemphasized.

We have previously shown that human knockouts can inform GWAS research into complex phenotypes.⁴⁸ One informative example in this study is *APOBR*. This gene is in the same linkage disequilibrium [LD] block as *SH2B1*, which has been proposed as the source of the obesity GWAS signal in 16p11.2.^{49,50} However, our result suggests that *APOBR* might have also contributed to the obesity signal. On the other hand, lack of florid dyslipidemia in these affected children suggests that the study of *APOBR* in the context of complex diseases should focus on obesity rather than dyslipidemia.

The remarkable contribution of autosomal-recessive forms of genes to the disease burden in the study

population presents an obvious prevention opportunity. Each of the families that had an identified recessive variant received genetic counseling that explored their future reproductive options, and we have previously shown a very high uptake for such services in the country.¹⁰ Although private mutations continue to be a significant player, it is encouraging that nearly all the founder variants listed in [Table S6](#) have already been identified by our previous studies. This suggests that the time is ripe for the use of these variants in population-based prevention programs, which are currently in development. One advantage of specifically using these high-quality pathogenic variants is the avoidance of uncertainty associated with interpreting variants for which there is no supporting human genetics evidence; these variants can pose a significant challenge to any screening program. Inexpensive genotyping-based assays that cover all of these variants and allow for a regular update as more of these variants are identified in the population will be ideally suited for primary prevention through expanding Saudi Arabia's current premarital carrier-screening program, which is limited to sickle cell disease and thalassemia. One can also envision their use in secondary prevention through early diagnosis by incorporating them into the existing Saudi newborn-screening program.

In conclusion, we report in a highly consanguineous population a large clinical exome study that highlights the power of a genomics-first approach to empower clinicians of all backgrounds to partake in the genomic medicine revolution. We also showcase the potential of consanguineous populations to contribute to the medical annotation of the human genome beyond individual discoveries of disease-related genes. The dataset we share through this publication can be a helpful resource for future clinical genomic studies both in outbred and inbred populations.

Appendix A: List of Candidate Genes Identified in the Study Cohort

Autosomal Recessive

AARSD1 (MIM: 613212), *ABCA13* (MIM: 607807), *ACBD3* (MIM: 606809), *ACOT4* (MIM: 614314), *ACSBG1* (MIM: 614362), *AKNA* (MIM: 605729), *ALKBH8* (MIM: 613306), *AP1B1* (MIM: 600157), *ATG7* (MIM: 608760), *ATRN* (MIM: 603130), *BCAS3* (MIM: 607470), *BECN1* (MIM: 604378), *BMP2K* (MIM: 617648), *BRAP* (MIM: 604986), *BTNL8* (MIM: 615606), *CCDC18*, *CCDC67* (MIM: 617148), *CCDC96*, *CD34* (MIM: 142230), *CEP85*, *CEP295* (MIM: 617728), *CEP131* (MIM: 613479), *CFAP46*, *CFAP221*, *CHEK1* (MIM: 603078), *CMYA5* (MIM: 612193), *CNTF* (MIM: 118945), *COL6A6* (MIM: 616613), *CSRP2BP* (MIM: 617501), *CY5R4* (MIM: 608343), *DCAF15*, *DEGS1* (MIM: 615843), *DERL3* (MIM: 610305), *DGKG* (MIM: 601854), *DIDO1* (MIM: 604140), *DMAPI* (MIM: 605077), *DMRT2* (MIM: 604935), *DMTF1* (MIM:

608491), *DNAJA4*, *DNAJC11* (MIM: 614827), *DSCAML1* (MIM: 611782), *E2F4* (MIM: 600659), *EHBPL1*, *EIF2A* (MIM: 609234), *EIF6* (MIM: 602912), *ELFN2*, *EMSY* (MIM: 608574), *EPHB6* (MIM: 602757), *ERGIC3* (MIM: 616971), *FAM69B* (MIM: 614543), *NCOR2* (MIM: 600848), *FAT3* (MIM: 612483), *FOSL1* (MIM: 136515), *FOXB1*, *GAD2* (MIM: 138275), *GDI2* (MIM: 600767), *GLTPD2*, *GTF2F2* (MIM: 189969), *GTF3A* (MIM: 600860), *HCN2* (MIM: 603781), *HSF2* (MIM: 140581), *ICE1* (MIM: 617958), *IL6ST* (MIM: 600694), *INADL* (MIM: 603199), *IQSEC3* (MIM: 612118), *ITFG2* (MIM: 617421), *ITGA4* (MIM: 192975), *KDM5A* (MIM: 180202), *KDM6B* (MIM: 611577), *KIAA1024* (MIM: 618054), *KIF9* (MIM: 607910), *KIF19*, *KIF13B* (MIM: 607350), *LAMA5* (MIM: 601033), *LETM1* (MIM: 604407), *LSR* (MIM: 616582), *LTBP1* (MIM: 150390), *LURAP1* (MIM: 616129), *MANEA* (MIM: 612327), *MAP1B* (MIM: 157129), *MAP2* (MIM: 157130), *MAPK8IP2* (MIM: 607755), *MARK1* (MIM: 606511), *MCM3* (MIM: 602693), *MED18* (MIM: 612384), *METTL12* (MIM: 617897), *MFN1* (MIM: 608506), *MICAL1* (MIM: 607129), *MICAL3* (MIM: 608882), *MMP10* (MIM: 185260), *MTCL1* (MIM: 615766), *NAA20* (MIM: 610833), *NAIP* (MIM: 600355), *NRDC* (MIM: 602651), *NRP1* (MIM: 602069), *NUP98* (MIM: 601021), *P2RX6* (MIM: 608077), *PAK1IP1* (MIM: 607811), *PARD3* (MIM: 606745), *PARP10* (MIM: 609564), *PARP16*, *PHF14*, *PIGB* (MIM: 604122), *PLCH1* (MIM: 612835), *PLEKHH2* (MIM: 612723), *PLIN5* (MIM: 613248), *PLXNA1* (MIM: 601055), *PLXNA2* (MIM: 601054), *PRSS8* (MIM: 600823), *PTPN12* (MIM: 600079), *PUS7L*, *RINT1* (MIM: 610089), *SALL3* (MIM: 605079), *SCHIP1*, *SCNN1D* (MIM: 601328), *SCYL2* (MIM: 616365), *SHQ1* (MIM: 613663), *SIRPB2* (MIM: 605466), *SLC38A3* (MIM: 604437), *SLC7A1* (MIM: 104615), *SLIT1* (MIM: 603742), *SLK* (MIM: 616563), *SMG8* (MIM: 613175), *SMPD4* (MIM: 610457), *SOGA1*, *STXBP3* (MIM: 608339), *SUSD2* (MIM: 615825), *TAF10* (MIM: 600475), *TENM2* (MIM: 610119), *THOC3* (MIM: 606929), *TIMM8B* (MIM: 606659), *TMEM130*, *TMEM17* (MIM: 614950), *TMEM212*, *TNFRSF9* (MIM: 602250), *TP73* (MIM: 601990), *TTL10*, *TTL6* (MIM: 610849), *UGCG* (MIM: 602874), *UNC13B* (MIM: 605836), *UNC13C* (MIM: 614568), *UNC5A* (MIM: 607869), *USO1* (MIM: 603344), *VAT1L*, *VCAM1* (MIM: 192225), *VPS51* (MIM: 615738), *WDR6* (MIM: 606031), *WDR91* (MIM: 616303), *WWTR1* (MIM: 607392), *XIRP2* (MIM: 609778), *XRCC5* (MIM: 194364), *ZMIZ2* (MIM: 611196), *ZNF280C*, *ZNF707*, and *ZYX* (MIM: 602002).

Autosomal Dominant

ACAT2 (MIM: 100678), *ACMSD* (MIM: 608889), *ACO1* (MIM: 100880), *AMBRA1* (MIM: 611359), *AP2B1* (MIM: 601025), *BCL9* (MIM: 602597), *BTBD1* (MIM: 608530), *CACNA1E* (MIM: 601013), *CACNA2D1* (MIM: 114204), *CDH8* (MIM: 610528), *CDH9* (MIM: 609974), *CEP89* (MIM: 615470), *CHD5* (MIM: 610771), *CHD6* (MIM: 616114), *CREBRF* (MIM: 617109), *DLGAP2* (MIM: 605438), *DLX1* (MIM: 600029), *DSCAM* (MIM: 602523), *ESCO1* (MIM: 609674), *EYA3* (MIM: 601655), *FASN*

(MIM: 600212), *FRMD6* (MIM: 614555), *FRYL*, *FYTTD1* (MIM: 616933), *FZD9* (MIM: 601766), *GLTSCR2* (MIM: 605691), *HDAC4* (MIM: 605314), *HOXC4* (MIM: 142974), *KDM2B* (MIM: 609078), *KIAA1328* (MIM: 616480), *KIF5B* (MIM: 602809), *KLF4* (MIM: 602253), *LRR4C* (MIM: 608817), *MGA* (MIM: 616061), *MOV10* (MIM: 610742), *MYO16* (MIM: 615479), *MYO18A* (MIM: 610067), *MYO1A* (MIM: 601478), *MYO9B* (MIM: 602129), *MYT1* (MIM: 600379), *NAV1* (MIM: 611628), *OSBPL9* (MIM: 606737), *P2RY13* (MIM: 606380), *PLK2* (MIM: 607023), *PLPP3* (MIM: 610391), *PML* (MIM: 102578), *PRKACA* (MIM: 601639), *PTPN12* (MIM: 600079), *RASIP1* (MIM: 609623), *RBM14* (MIM: 612409), *RNF165*, *RPTOR* (MIM: 607130), *SEPT2* (MIM: 601506), *SETDB1* (MIM: 604396), *SHANK1* (MIM: 604999), *SMARCC2* (MIM: 601734), *SMG6* (MIM: 610963), *SPEN* (MIM: 613484), *TBXA2R* (MIM: 188070), *TJP1* (MIM: 601009), *TLN1* (MIM: 186745), *TNMD* (MIM: 300459), *TOMM40* (MIM: 608061), *TRIM7* (MIM: 609315), *TRPV5* (MIM: 606679), *UNK* (MIM: 616375), *USF3* (MIM: 617568), *USP33* (MIM: 615146), *WWP1* (MIM: 602307), *XPNPEP1* (MIM: 602443), *XRCC6* (MIM: 152690), *ZBED6* (MIM: 613512), *ZFH3* (MIM: 104155), and *ZPR1* (MIM: 603901).

X-Linked

CDR1 (MIM: 302650), *KLF8* (MIM: 300286), *PLXNA3* (MIM: 300022), *RBBP7* (MIM: 300825), *RPS6KA6* (MIM: 300303), *SLITRK4* (MIM: 300562), and *SMARCA1* (MIM: 300012).

Supplemental Data

Supplemental Data can be found online at <https://doi.org/10.1016/j.ajhg.2019.04.011>.

Acknowledgments

We thank all those who participated in the clinical care of the study individuals beyond those who requested CES and provided phenotypic data. We acknowledge the support of the Saudi Human Genome Program as well as the Molecular Diagnostic Laboratory administration and staff. The authors declare no conflict of interest.

Declaration of Interests

Authors who are affiliated with Saudi Diagnostic Laboratories are paid employees of King Faisal Specialist Hospital International Holding Company.

Received: December 19, 2018

Accepted: April 11, 2019

Published: May 23, 2019

Web Resources

OMIM, <http://omim.org/>

References

1. Alkuraya, F.S. (2013). Impact of new genomic tools on the practice of clinical genetics in consanguineous populations: The Saudi experience. *Clin. Genet.* *84*, 203–208.
2. Alkuraya, F.S. (2014). Genetics and genomic medicine in Saudi Arabia. *Mol. Genet. Genomic Med.* *2*, 369–378.
3. Alkuraya, F.S. (2010). Autozygome decoded. *Genet. Med.* *12*, 765–771.
4. Alkuraya, F.S. (2015). Human knockout research: New horizons and opportunities. *Trends Genet.* *31*, 108–115.
5. Alsalem, A.B., Halees, A.S., Anazi, S., Alshamekh, S., and Alkuraya, F.S. (2013). Autozygome sequencing expands the horizon of human knockout research and provides novel insights into human phenotypic variation. *PLoS Genet.* *9*, e1004030.
6. Alkuraya, F.S. (2012). Discovery of rare homozygous mutations from studies of consanguineous pedigrees. *Curr. Protoc. Hum. Genet.* *75*.
7. Scott, E.M., Halees, A., Itan, Y., Spencer, E.G., He, Y., Azab, M.A., Gabriel, S.B., Belkadi, A., Boisson, B., Abel, L., et al.; Greater Middle East Variome Consortium (2016). Characterization of Greater Middle Eastern genetic variation for enhanced disease gene discovery. *Nat. Genet.* *48*, 1071–1076.
8. Alazami, A.M., Patel, N., Shamseldin, H.E., Anazi, S., Al-Dosari, M.S., Alzahrani, F., Hijazi, H., Alshammari, M., Aldahmesh, M.A., Salih, M.A., et al. (2015). Accelerating novel candidate gene discovery in neurogenetic disorders via whole-exome sequencing of prescreened multiplex consanguineous families. *Cell Rep.* *10*, 148–161.
9. Shaheen, R., Patel, N., Shamseldin, H., Alzahrani, F., Al-Yamany, R., AlMoisheer, A., Ewida, N., Anazi, S., Alnemer, M., Elsheikh, M., et al. (2016). Accelerating matchmaking of novel dysmorphology syndromes through clinical and genomic characterization of a large cohort. *Genet. Med.* *18*, 686–695.
10. Alkuraya, F.S. (2013). The application of next-generation sequencing in the autozygosity mapping of human recessive diseases. *Hum. Genet.* *132*, 1197–1211.
11. Anazi, S., Maddirevula, S., Faqeih, E., Alsedairy, H., Alzahrani, F., Shamseldin, H.E., Patel, N., Hashem, M., Ibrahim, N., Abdulwahab, F., et al. (2017). Clinical genomics expands the morbid genome of intellectual disability and offers a high diagnostic yield. *Mol. Psychiatry* *22*, 615–624.
12. Boycott, K.M., Rath, A., Chong, J.X., Hartley, T., Alkuraya, F.S., Baynam, G., Brookes, A.J., Brudno, M., Carracedo, A., den Dunnen, J.T., et al. (2017). International cooperation to enable the diagnosis of all rare genetic diseases. *Am. J. Hum. Genet.* *100*, 695–705.
13. Group, S.M.; and Saudi Mendeliome Group (2015). Comprehensive gene panels provide advantages over clinical exome sequencing for Mendelian diseases. *Genome Biol.* *16*, 134.
14. Monies, D., Abouelhoda, M., AlSayed, M., Alhassnan, Z., Alo-taibi, M., Kayyali, H., Al-Owain, M., Shah, A., Rahbeeni, Z., Al-Muhaizea, M.A., et al. (2017). The landscape of genetic diseases in Saudi Arabia based on the first 1000 diagnostic panels and exomes. *Hum. Genet.* *136*, 921–939.
15. Kalia, S.S., Adelman, K., Bale, S.J., Chung, W.K., Eng, C., Evans, J.P., Herman, G.E., Hufnagel, S.B., Klein, T.E., Korf, B.R., et al. (2017). Recommendations for reporting of secondary findings in clinical exome and genome sequencing, 2016 update (ACMG SF v2.0): A policy statement of the American College of Medical Genetics and Genomics. *Genet. Med.* *19*, 249–255.

16. Abouelhoda, M., Sobahy, T., El-Kalioby, M., Patel, N., Shamseldin, H., Monies, D., Al-Tassan, N., Ramzan, K., Imtiaz, F., Shaheen, R., and Alkuraya, F.S. (2016). Clinical genomics can facilitate countrywide estimation of autosomal recessive disease burden. *Genet. Med.* *18*, 1244–1249.
17. Richards, S., Aziz, N., Bale, S., Bick, D., Das, S., Gastier-Foster, J., Grody, W.W., Hegde, M., Lyon, E., Spector, E., et al.; ACMG Laboratory Quality Assurance Committee (2015). Standards and guidelines for the interpretation of sequence variants: A joint consensus recommendation of the American College of Medical Genetics and Genomics and the Association for Molecular Pathology. *Genet. Med.* *17*, 405–424.
18. Monies, D., Vågbo, C.B., Al-Owain, M., Alhomaidi, S., and Alkuraya, F.S. (2019). Recessive Truncating Mutations in ALKBH8 Cause Severe Impairment of Wobble Uracil Modification and Intellectual Disability. *American Journal of Human Genetics* *104*. <https://doi.org/10.1016/j.ajhg.2019.03.026>.
19. Tyska, M.J., Mackey, A.T., Huang, J.-D., Copeland, N.G., Jenkins, N.A., and Mooseker, M.S. (2005). Myosin-1a is critical for normal brush border structure and composition. *Mol. Biol. Cell* *16*, 2443–2457.
20. Gingras, S., Earls, L.R., Howell, S., Smeyne, R.J., Zakharenko, S.S., and Pelletier, S. (2015). SCYL2 protects CA3 pyramidal neurons from excitotoxicity during functional maturation of the mouse hippocampus. *J. Neurosci.* *35*, 10510–10522.
21. Banks, G., Lassi, G., Hoerder-Suabedissen, A., Tinarelli, F., Simon, M.M., Wilcox, A., Lau, P., Lawson, T.N., Johnson, S., Rutman, A., et al. (2018). A missense mutation in *Katnal1* underlies behavioural, neurological and ciliary anomalies. *Mol. Psychiatry* *23*, 713–722.
22. Ohno, M., Hiraoka, Y., Matsuoka, T., Tomimoto, H., Takao, K., Miyakawa, T., Oshima, N., Kiyonari, H., Kimura, T., Kita, T., and Nishi, E. (2009). Nardilysin regulates axonal maturation and myelination in the central and peripheral nervous system. *Nat. Neurosci.* *12*, 1506–1513.
23. Shaheen, R., Szymanska, K., Basu, B., Patel, N., Ewida, N., Faqeih, E., Al Hashem, A., Derar, N., Alsharif, H., Aldahmesh, M.A., et al.; Ciliopathy WorkingGroup (2016). Characterizing the morbid genome of ciliopathies. *Genome Biol.* *17*, 242.
24. Firat-Karalar, E.N., Sante, J., Elliott, S., and Stearns, T. (2014). Proteomic analysis of mammalian sperm cells identifies new components of the centrosome. *J. Cell Sci.* *127*, 4128–4133.
25. Nasir, A., Le Bail, A., Daiker, V., Klima, J., Richter, P., and Lebert, M. (2018). Identification of a flagellar protein implicated in the gravitaxis in the flagellate *Euglena gracilis*. *Sci. Rep.* *8*, 7605.
26. Tsuchiya, Y., Yoshida, S., Gupta, A., Watanabe, K., and Kitagawa, D. (2016). Cep295 is a conserved scaffold protein required for generation of a bona fide mother centriole. *Nat. Commun.* *7*, 12567.
27. Adly, N., Alhashem, A., Ammari, A., and Alkuraya, F.S. (2014). Ciliary genes *TBC1D32/C6orf170* and *SCLT1* are mutated in patients with OFD type IX. *Hum. Mutat.* *35*, 36–40.
28. Maddirevula, S., Alsahli, S., Alhabeeb, L., Patel, N., Alzahrani, F., Shamseldin, H.E., Anazi, S., Ewida, N., Alsaif, H.S., Mohamed, J.Y., et al. (2018). Expanding the phenome and variome of skeletal dysplasia. *Genet. Med.* *20*, 1609–1616.
29. Patel, N., El Mouzan, M.I., Al-Mayouf, S.M., Adly, N., Mohamed, J.Y., Al Mofarreh, M.A., Ibrahim, N., Xiong, Y., Zhao, Q., Al-Saleem, K.A., and Alkuraya, F.S. (2014). Study of Mendelian forms of Crohn's disease in Saudi Arabia reveals novel risk loci and alleles. *Gut* *63*, 1831–1832.
30. Aldahmesh, M.A., Khan, A.O., Mohamed, J., and Alkuraya, F.S. (2011). Novel recessive *BFP2* and *PITX3* mutations: Insights into mutational mechanisms from consanguineous populations. *Genet. Med.* *13*, 978–981.
31. Anazi, S., Maddirevula, S., Salpietro, V., Asi, Y.T., Alsahli, S., Alhashem, A., Shamseldin, H.E., Alzahrani, F., Patel, N., Ibrahim, N., et al. (2017). Expanding the genetic heterogeneity of intellectual disability. *Hum. Genet.* *136*, 1419–1429.
32. Shaheen, R., Anazi, S., Ben-Omran, T., Seidahmed, M.Z., Caddle, L.B., Palmer, K., Ali, R., Alshidi, T., Hagos, S., Goodwin, L., et al. (2016). Mutations in *SMG9*, encoding an essential component of nonsense-mediated decay machinery, cause a multiple congenital anomaly syndrome in humans and mice. *Am. J. Hum. Genet.* *98*, 643–652.
33. Van De Weghe, J.C., Rusterholz, T.D.S., Latour, B., Grout, M.E., Aldinger, K.A., Shaheen, R., Dempsey, J.C., Maddirevula, S., Cheng, Y.-H.H., Phelps, I.G., et al.; University of Washington Center for Mendelian Genomics (2017). Mutations in *ARMC9*, which encodes a basal body protein, cause Joubert syndrome in humans and ciliopathy phenotypes in zebrafish. *Am. J. Hum. Genet.* *101*, 23–36.
34. Patel, N., Aldahmesh, M.A., Alkuraya, H., Anazi, S., Alsharif, H., Khan, A.O., Sunker, A., Al-Mohsen, S., Abboud, E.B., Nowilaty, S.R., et al. (2016). Expanding the clinical, allelic, and locus heterogeneity of retinal dystrophies. *Genet. Med.* *18*, 554–562.
35. Shaheen, R., Al Hashem, A., Alghamdi, M.H., Seidahmed, M.Z., Wakil, S.M., Dagriri, K., Keavney, B., Goodship, J., Alyousif, S., Al-Habshan, F.M., et al. (2015). Positional mapping of *PRKD1*, *NRP1* and *PRDM1* as novel candidate disease genes in truncus arteriosus. *J. Med. Genet.* *52*, 322–329.
36. Monies, D., Maddirevula, S., Kurdi, W., Alanazy, M.H., Alkhalidi, H., Al-Owain, M., Sulaiman, R.A., Faqeih, E., Goljan, E., Ibrahim, N., et al. (2017). Autozygosity reveals recessive mutations and novel mechanisms in dominant genes: Implications in variant interpretation. *Genet. Med.* *19*, 1144–1150.
37. Alazami, A.M., Al-Qattan, S.M., Faqeih, E., Alhashem, A., Alshammari, M., Alzahrani, F., Al-Dosari, M.S., Patel, N., Alsaqheir, A., Binabbas, B., et al. (2016). Expanding the clinical and genetic heterogeneity of hereditary disorders of connective tissue. *Hum. Genet.* *135*, 525–540.
38. Shaheen, R., Alazami, A.M., Alshammari, M.J., Faqeih, E., Alhashmi, N., Mousa, N., Alsinani, A., Ansari, S., Alzahrani, F., Al-Owain, M., et al. (2012). Study of autosomal recessive osteogenesis imperfecta in Arabia reveals a novel locus defined by *TMEM38B* mutation. *J. Med. Genet.* *49*, 630–635.
39. Anazi, S., Al-Sabban, E., and Alkuraya, F.S. (2014). Gonadal mosaicism as a rare cause of autosomal recessive inheritance. *Clin. Genet.* *85*, 278–281.
40. Seidahmed, M.Z., Salih, M.A., Abdelbasit, O.B., Alassiri, A.H., Hussein, K.A., Miqdad, A., Samadi, A., Rasheed, A.A., Alorainy, I.A., Shaheen, R., and Alkuraya, F.S. (2016). Gonadal mosaicism for *ACTA1* gene masquerading as autosomal recessive nemaline myopathy. *Am. J. Med. Genet. A.* *170*, 2219–2221.
41. Kulkarni, N., Tang, S., Bhardwaj, R., Bernes, S., and Grebe, T.A. (2016). Progressive movement disorder in brothers carrying a *GNAO1* mutation responsive to deep brain stimulation. *J. Child Neurol.* *31*, 211–214.
42. Abouhamed, M., Grobe, K., San, I.V., Thelen, S., Honnert, U., Balda, M.S., Matter, K., and Bähler, M. (2009). Myosin IXa

- regulates epithelial differentiation and its deficiency results in hydrocephalus. *Mol. Biol. Cell* 20, 5074–5085.
43. Shamseldin, H.E., Kurdi, W., Almusafri, F., Alnemer, M., Alkaff, A., Babay, Z., Alhashem, A., Tulbah, M., Alsahan, N., Khan, R., et al. (2018). Molecular autopsy in maternal-fetal medicine. *Genet. Med.* 20, 420–427.
 44. Abu-Safieh, L., Abboud, E.B., Alkuraya, H., Shamseldin, H., Al-Enzi, S., Al-Abdi, L., Hashem, M., Colak, D., Jarallah, A., Ahmad, H., et al. (2011). Mutation of IGFBP7 causes upregulation of BRAF/MEK/ERK pathway and familial retinal arterial macroaneurysms. *Am. J. Hum. Genet.* 89, 313–319.
 45. Cookson, M.R. (2011). A feedforward loop links Gaucher and Parkinson's diseases? *Cell* 146, 9–11.
 46. Study, T.D.D.D.; and Deciphering Developmental Disorders Study (2017). Prevalence and architecture of de novo mutations in developmental disorders. *Nature* 542, 433–438.
 47. Martin, H.C., Jones, W.D., McIntyre, R., Sanchez-Andrade, G., Sanderson, M., Stephenson, J.D., Jones, C.P., Handsaker, J., Gallone, G., and Bruntraeger, M. (2018). Quantifying the contribution of recessive coding variation to developmental disorders. *Science* 362, 1161–1164.
 48. Maddirevula, S., AlZahrani, F., Anazi, S., Almureikhi, M., Ben-Omran, T., Abdel-Salam, G.M.H., Hashem, M., Ibrahim, N., Abdulwahab, F.M., Meriki, N., et al. (2018). GWAS signals revisited using human knockouts. *Genet. Med.* 20, 64–68.
 49. Doche, M.E., Bochukova, E.G., Su, H.-W., Pearce, L.R., Keogh, J.M., Henning, E., Cline, J.M., Saeed, S., Dale, A., Cheetham, T., et al. (2012). Human SH2B1 mutations are associated with maladaptive behaviors and obesity. *J. Clin. Invest.* 122, 4732–4736.
 50. Willer, C.J., Speliotes, E.K., Loos, R.J., Li, S., Lindgren, C.M., Heid, I.M., Berndt, S.I., Elliott, A.L., Jackson, A.U., Lamina, C., et al.; Wellcome Trust Case Control Consortium; and Genetic Investigation of ANthropometric Traits Consortium (2009). Six new loci associated with body mass index highlight a neuronal influence on body weight regulation. *Nat. Genet.* 41, 25–34.

Supplemental Data

Lessons Learned from Large-Scale, First-Tier

Clinical Exome Sequencing in a

Highly Consanguineous Population

Dorota Monies, Mohammed Abouelhoda, Mirna Assoum, Nabil Moghrabi, Rafiullah Rafiullah, Naif Almontashiri, Mohammed Alowain, Hamad Alzaidan, Moeen Alsayed, Shazia Subhani, Edward Cupler, Maha Faden, Amal Alhashem, Alya Qari, Aziza Chedrawi, Hisham Aldhalaan, Wesam Kurdi, Sameena Khan, Zuhair Rahbeeni, Maha Alotaibi, Ewa Goljan, Hadeel Elbardisy, Mohamed ElKalioby, Zeeshan Shah, Hibah Alruwaili, Amal Jaafar, Ranad Albar, Asma Akilan, Hamsa Tayeb, Asma Tahir, Mohammed Fawzy, Mohammed Nasr, Shaza Makki, Abdullah Alfaifi, Hanna Akleh, Suad Yamani, Dalal Bubshait, Mohammed Mahnashi, Talal Basha, Afaf Alsagheir, Musad Abu Khaled, Khalid Alsaleem, Maisoon Almugbel, Manal Badawi, Fahad Bashiri, Saeed Bohlega, Raashida Sulaiman, Ehab Tous, Syed Ahmed, Talal Algoufi, Hamoud Al-Mousa, Emadia Alaki, Susan Alhumaidi, Malak Althagafi, Hadeel Alghamdi, Malak Alghamdi, Ahmed Sahly, Shapar Nahrir, Ali Al-Ahmari, Hisham Alkuraya, Ali Almehaidib, Mohammed Abanemai, Fahad Alsohaibaini, Bandar Alsaud, Rand Arnaout, Ghada M.H. Abdel-Salam, Hasan Aldhekri, Suzan AlKhater, Khalid Alqadi, Essam Alsabban, Turki Alshareef, Khalid Awartani, Hanaa Banjar, Nada Alsahan, Ibraheem Abosoudah, Abdullah Alashwal, Wajeeh Aldekhail, Sami Alhajjar, Sulaiman Al-Mayouf, Abdulaziz Alsemari, Walaa Alshuaibi, Saeed Altala, Abdulhadi Altalhi, Salah Baz, Muddathir Hamad, Tariq Abalkhail, Badi Alenazi, Alya Alkaff, Fahad Almohareb, Fuad Al Mutairi, Mona Alsaleh, Abdullah Alsonbul, Somaya Alzelaye, Shakir Bahzad, Abdulaziz Bin Manee, Ola Jarrad, Neama Meriki, Bassem Albeirouti, Amal Alqasmi, Mohammed AlBalwi, Nawal Makhseed, Saeed Hassan, Isam Salih, Mustafa A. Salih, Marwan Shaheen, Saadeh Sermin, Shamsad Shahrukh, Shahrukh Hashmi, Ayman Shawli, Ameen Tajuddin, Abdullah Tamim, Ahmed Alnahari, Ibrahim Ghemlas, Maged Hussein, Sami Wali, Hatem Murad, Brian F. Meyer, and Fowzan S. Alkuraya

Figure S1. Flash WES protocol.

Summary of the steps and timing of FLASH WES resulting in an interval of 26 hours between consent and delivery of a provisional clinical report. Rapid DNA extraction was performed using the PureLink Genomic DNA kit (Thermo Fisher, Carlsbad, CA, USA) as recommended by manufacturer (https://www.thermofisher.com/document-connect/document-connect.html?url=https://assets.thermofisher.com/TFS-Assets/LSG/manuals/purelink_genomic_man.pdf). Library preparation, emulsion PCR, enrichment and sequencing were performed using the Ion Torrent AmpliSeq Whole Exome Sequencing protocol (<https://www.thermofisher.com/sa/en/home/life-science/sequencing/dna-sequencing/exome-sequencing/exome-sequencing-ion-torrent-next-generation-sequencing.html>). Sequence alignment, indexing of the reference genome (hg19), variant calling and annotation used a pipeline based on BWA, Samtools, GATK (<https://software.broadinstitute.org/gatk/>) and Annovar, respectively. Essentially, variants were annotated using a combination of public knowledge databases available from the Annovar package and in-house databases which included collections of previously published Saudi disease causing variants.

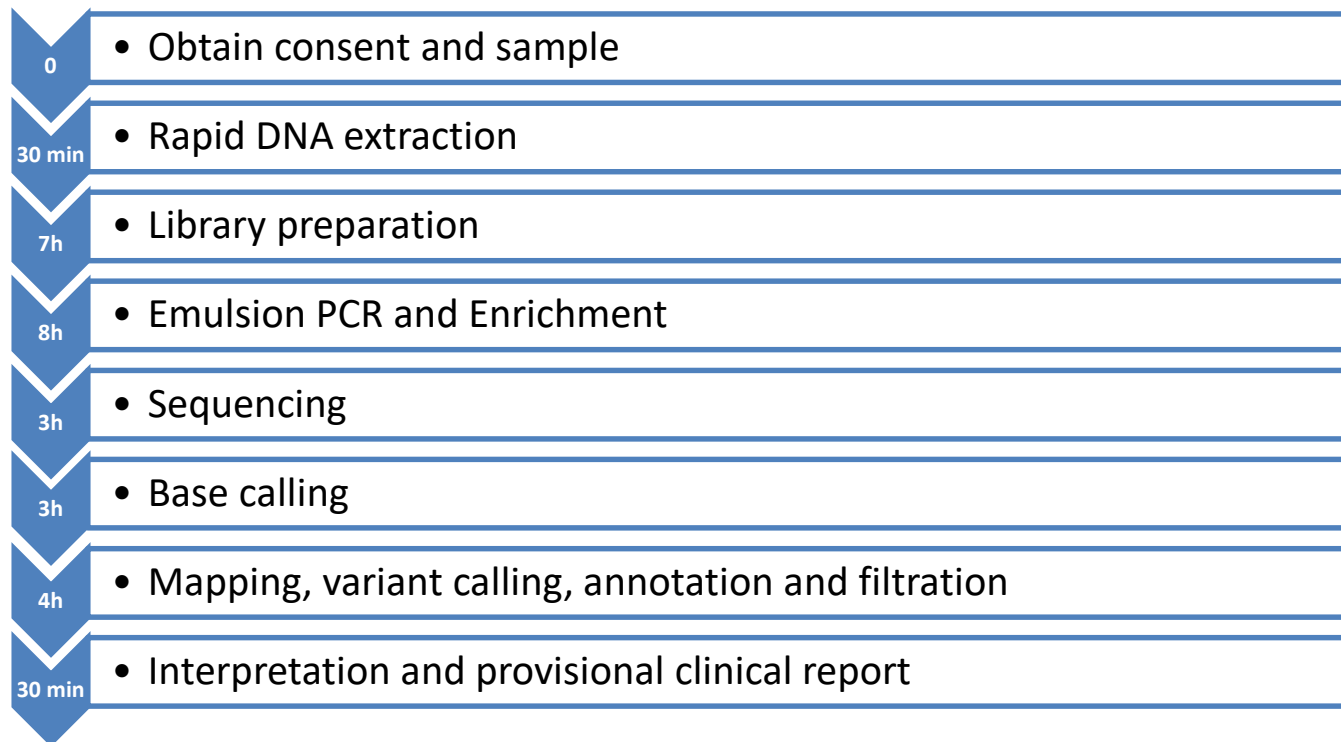
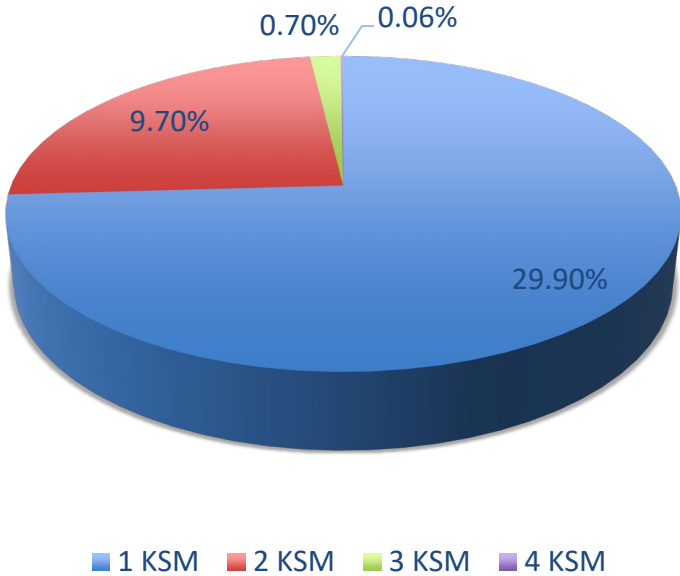


Figure S2. Carrier status for KSM (known Saudi mutations).

A) Distribution of KSM carrier status in the cohort. B) Distribution of shared KSM carrier status among couples.

A) KSM carrier distribution



B) Distribution of parents sharing KSM excluding alleles causing disease in index cases

