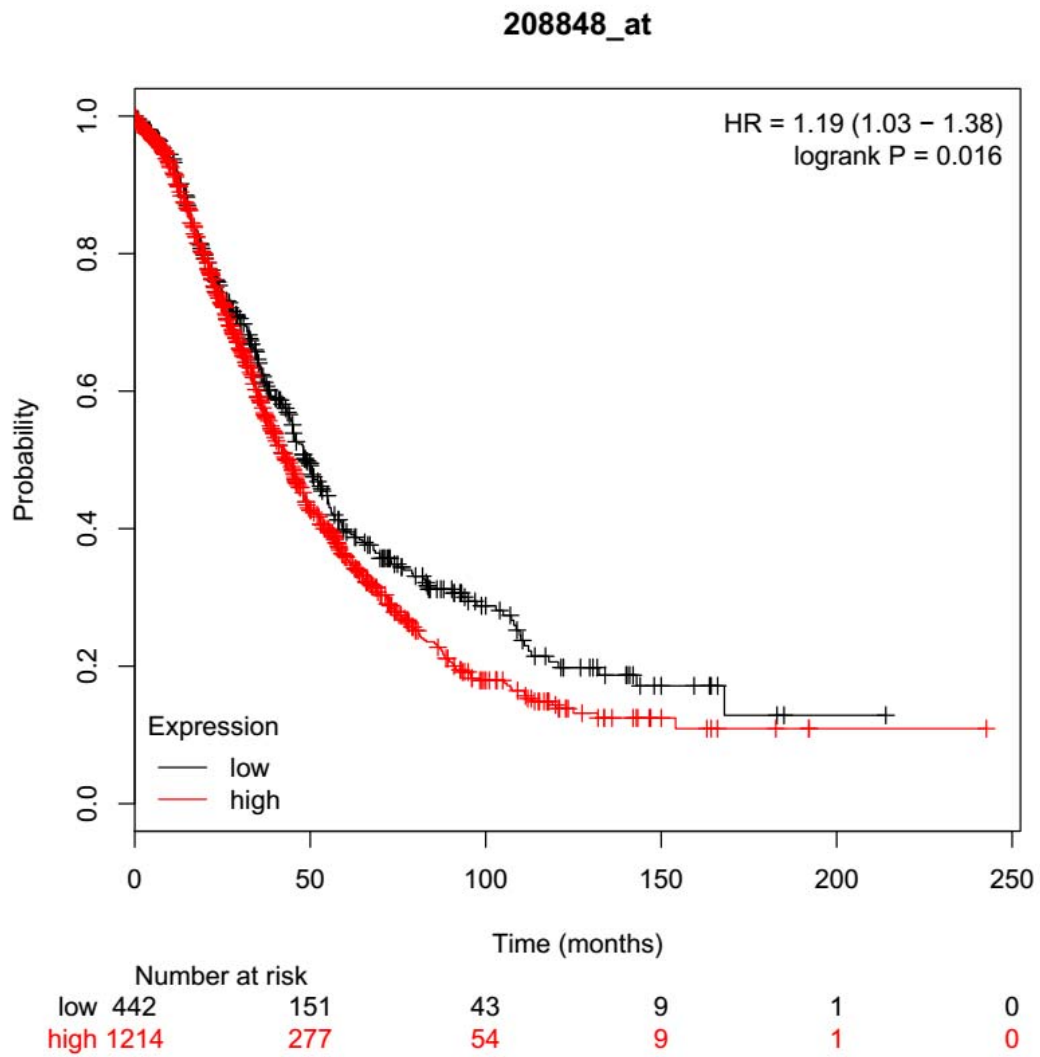


Supplementary figure 4

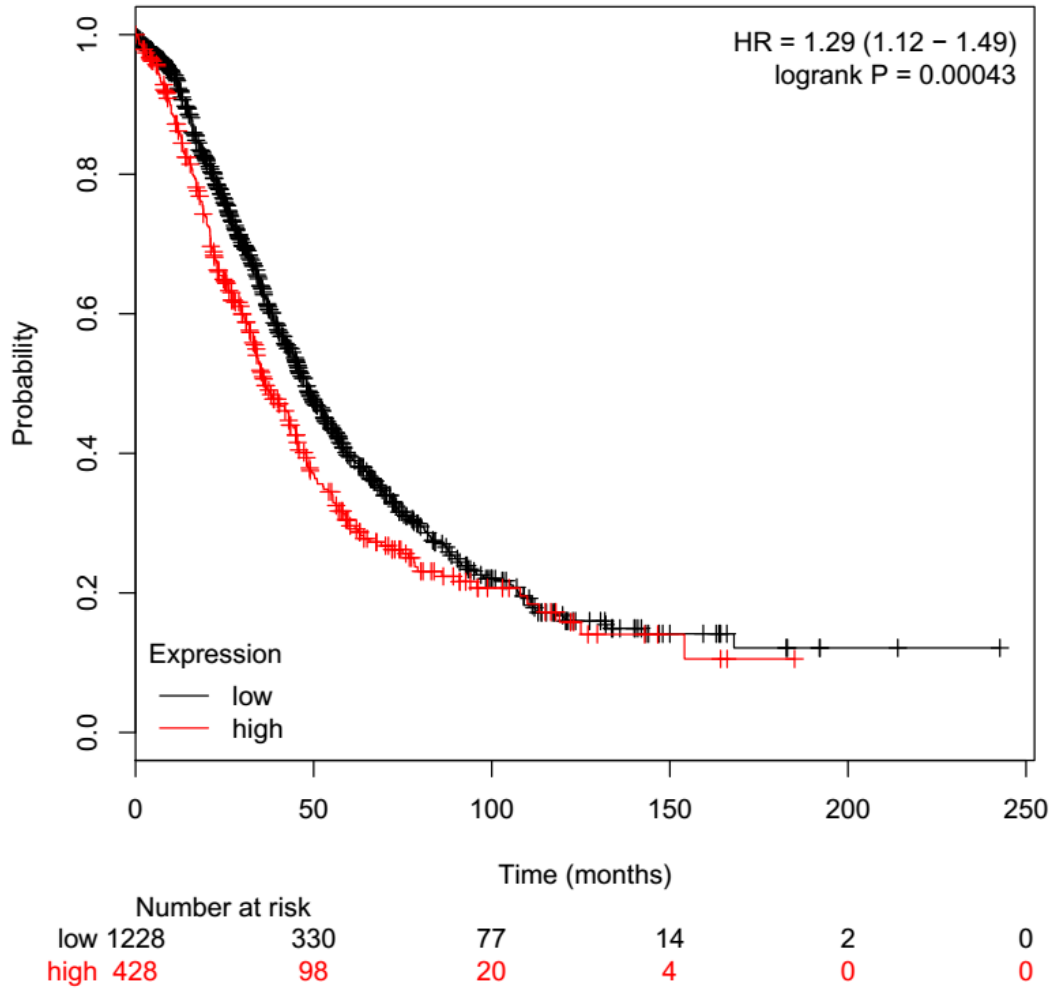
The KMplot analysis revealed that 62 of 102 hub molecules resulted in significant ovarian cancer overall survival (50 none reported molecules).

1.ADH5



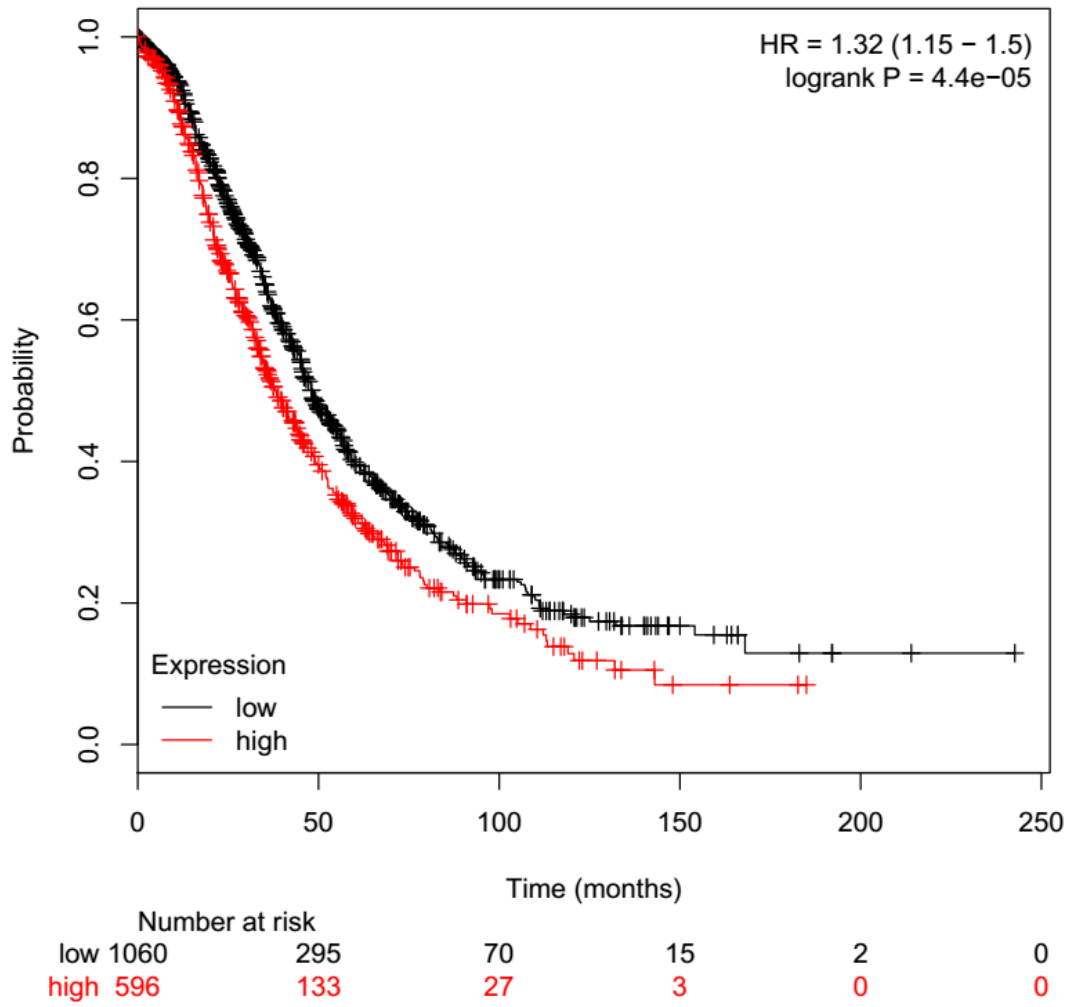
2. ADRA2A

209869_at



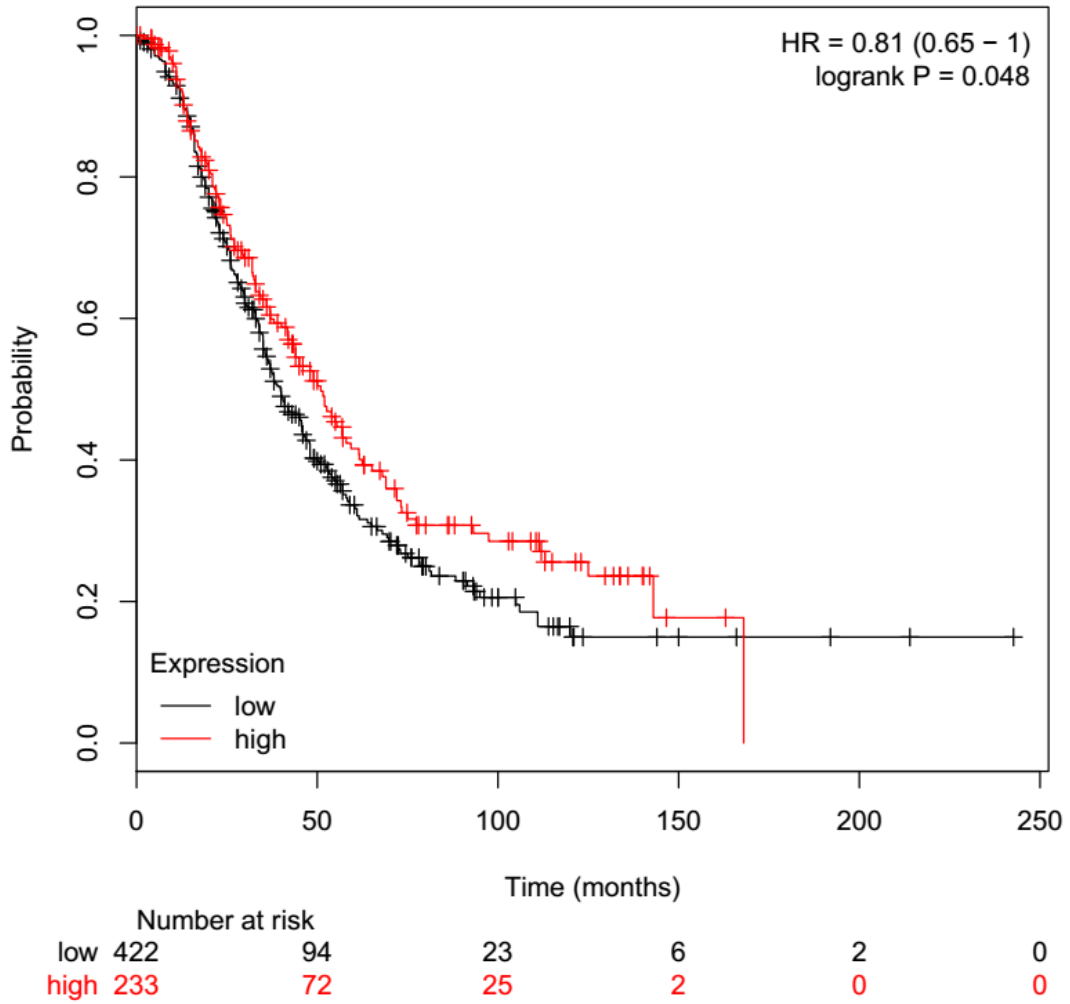
3. ASPN

219087_at



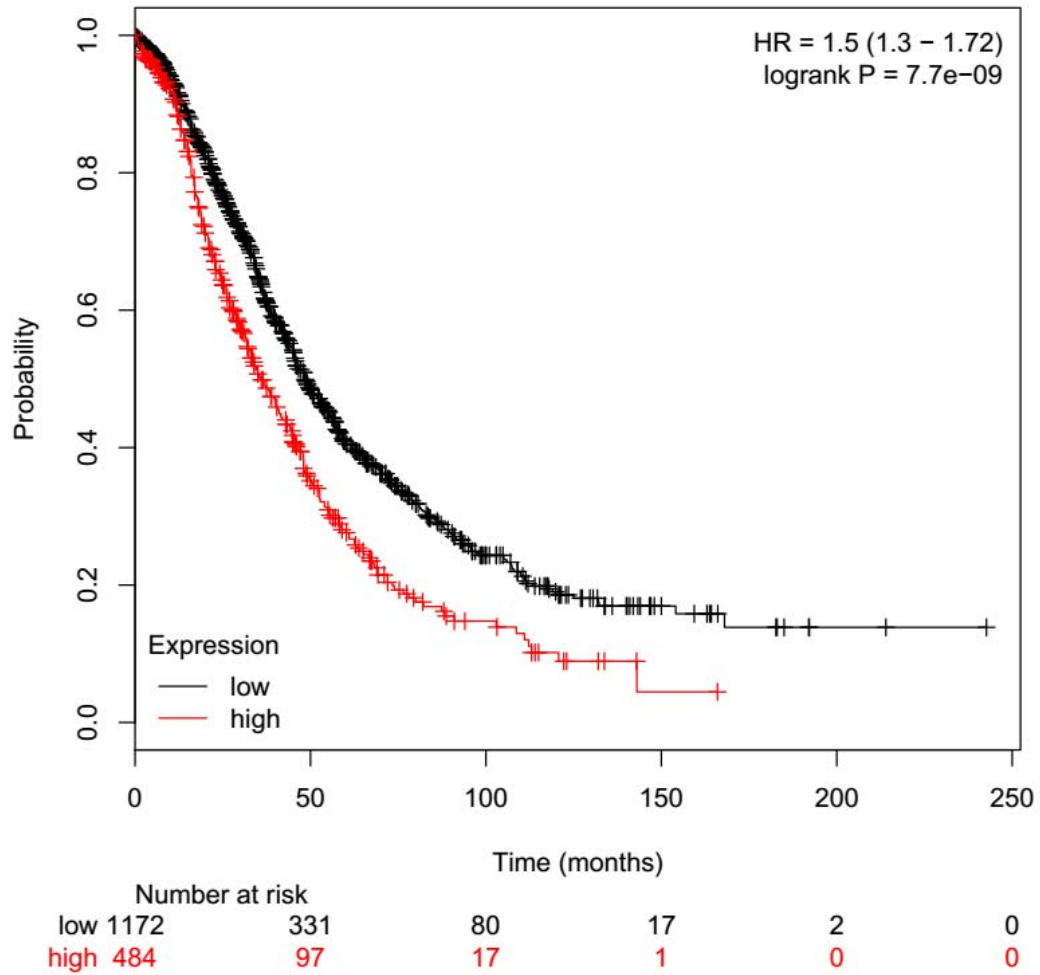
4. BDH2

235155_at



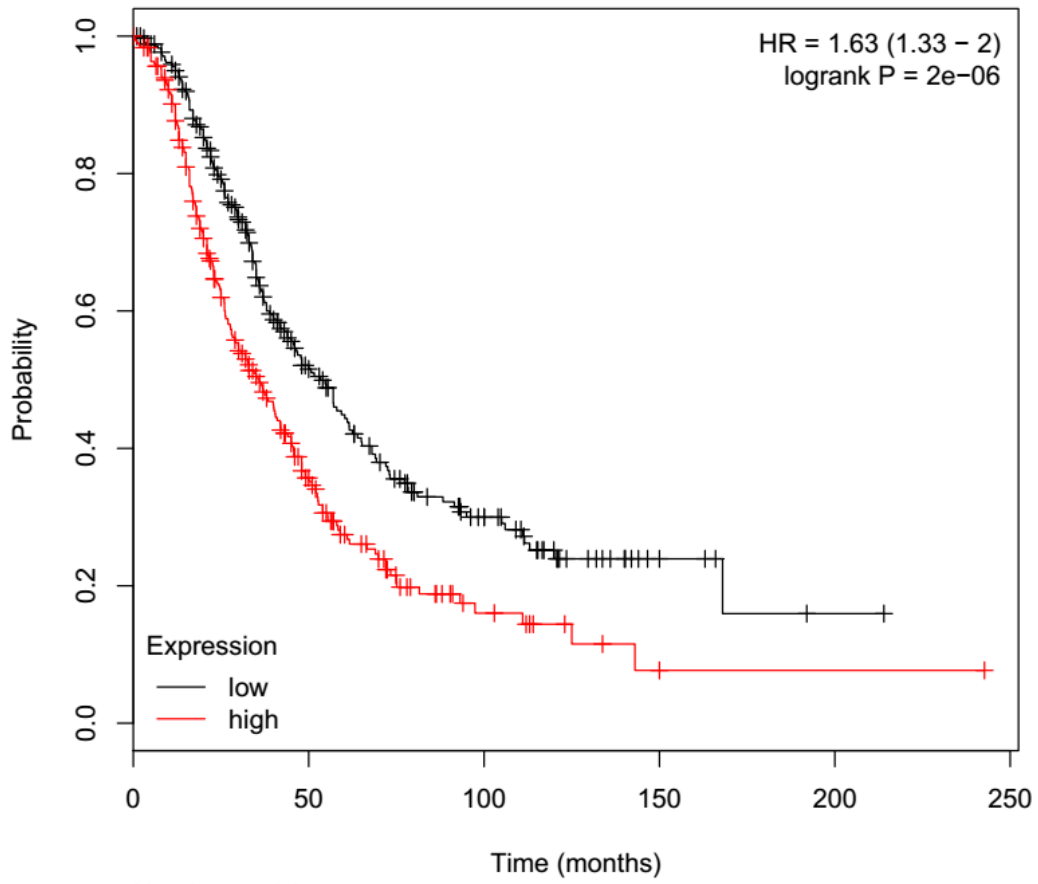
5. COL3A1

211161_s_at



6.COL6A6

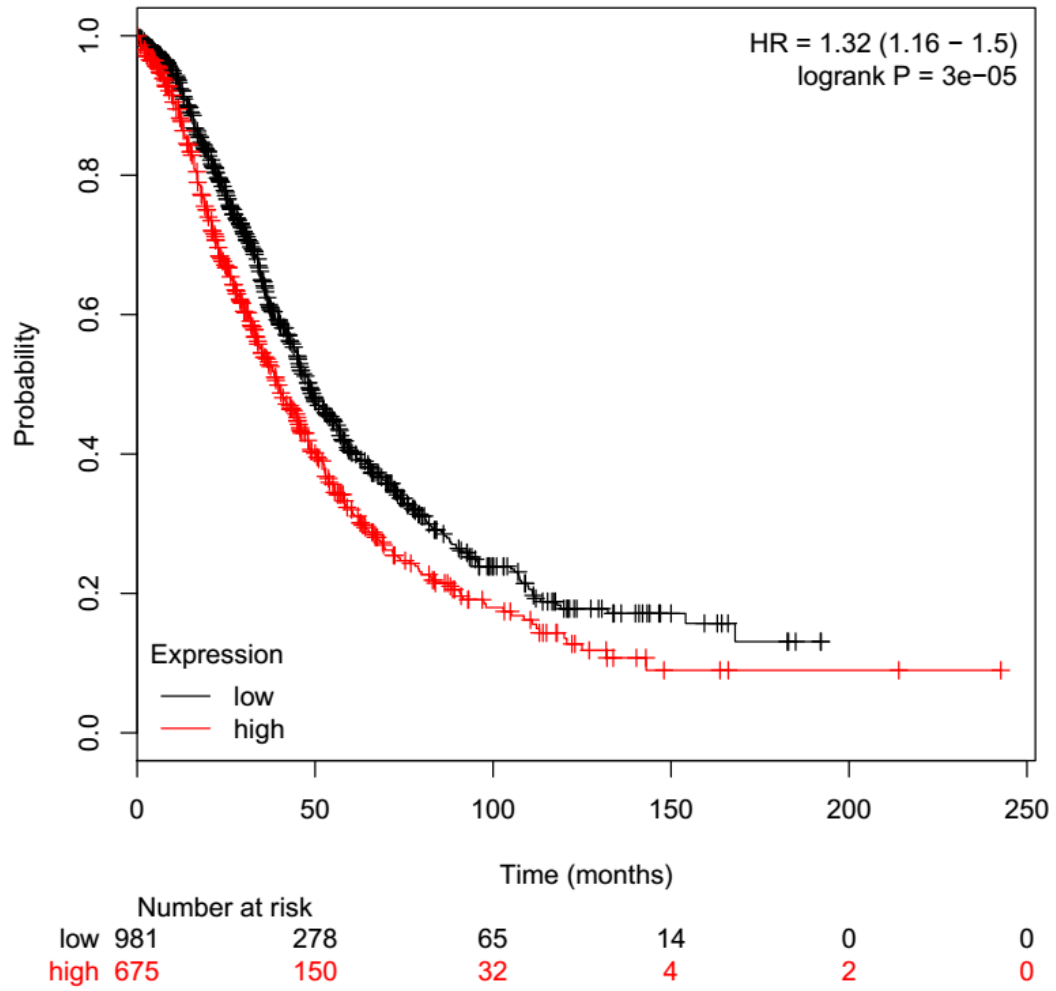
230867_at



	0	50	100	150	200	250
low	352	98	37	6	1	0
high	303	68	11	2	1	0

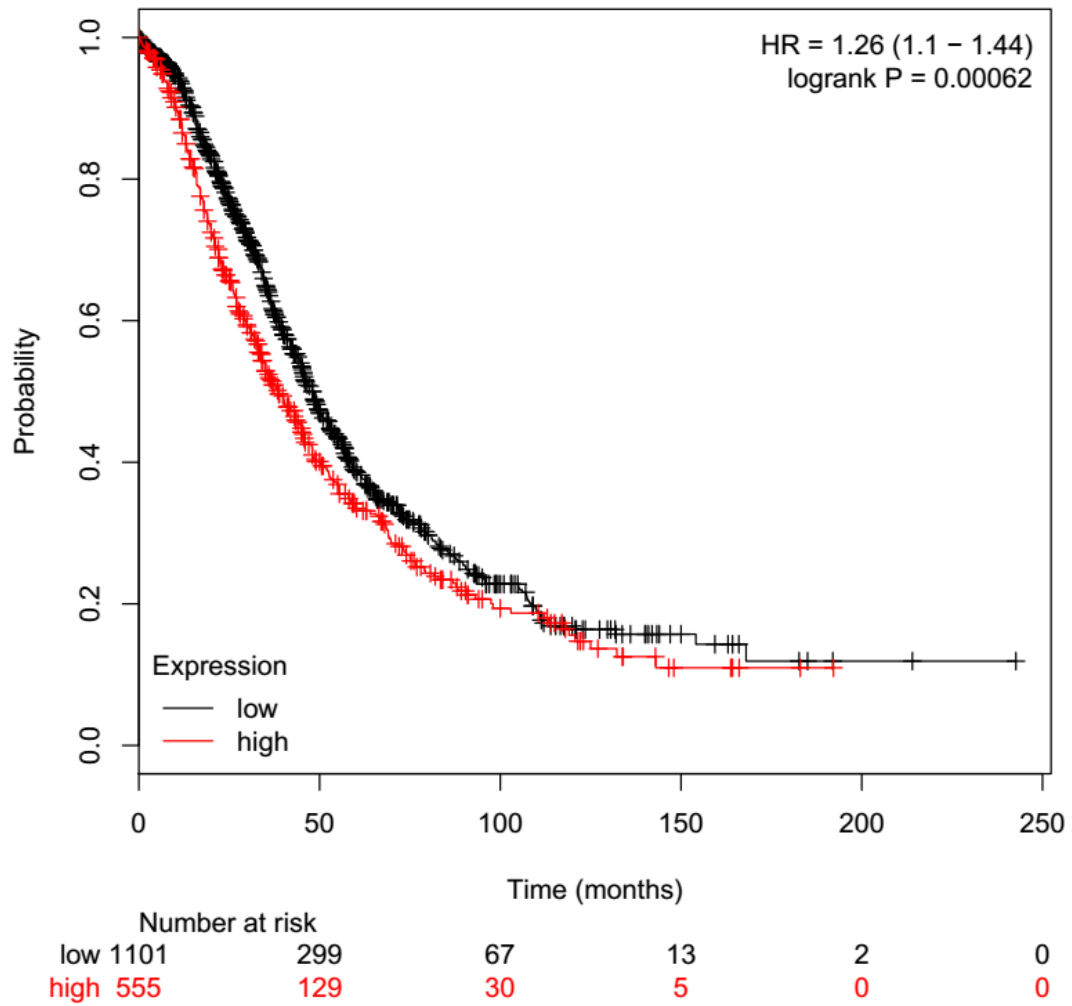
7. COL10A1

217428_s_at



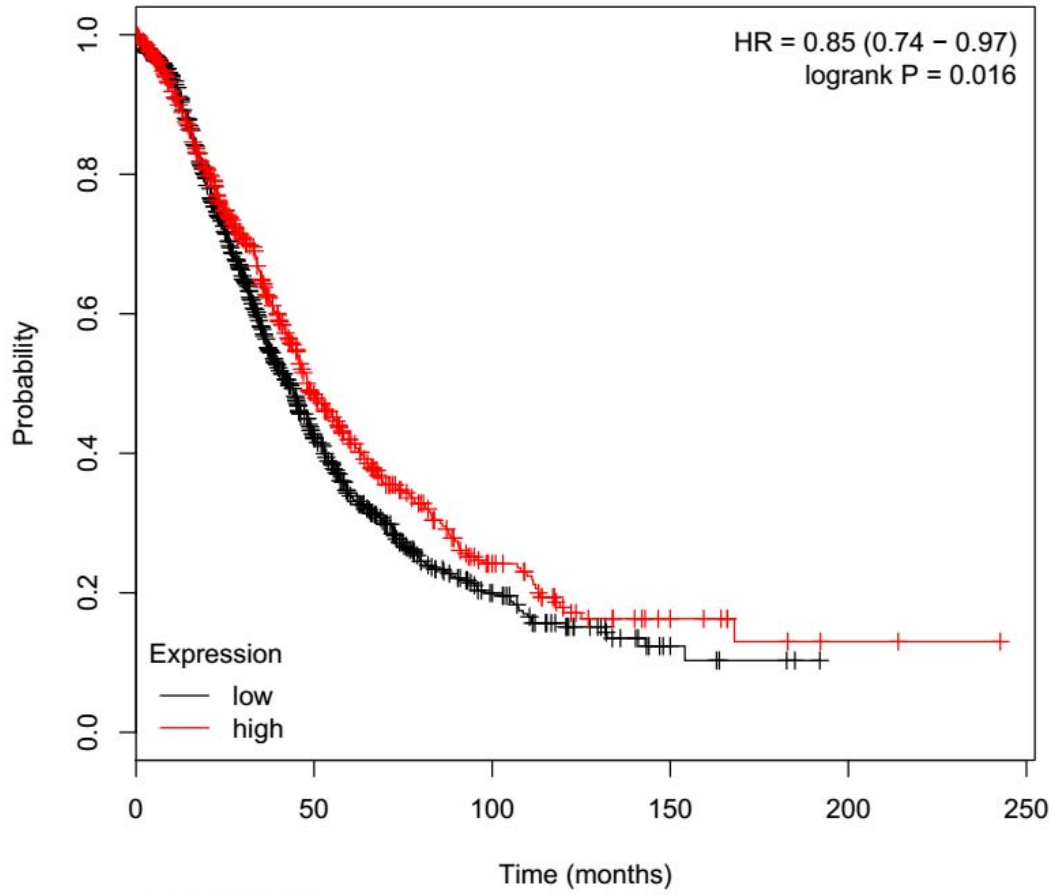
8. COL16A1

204345_at



9. DHRS2

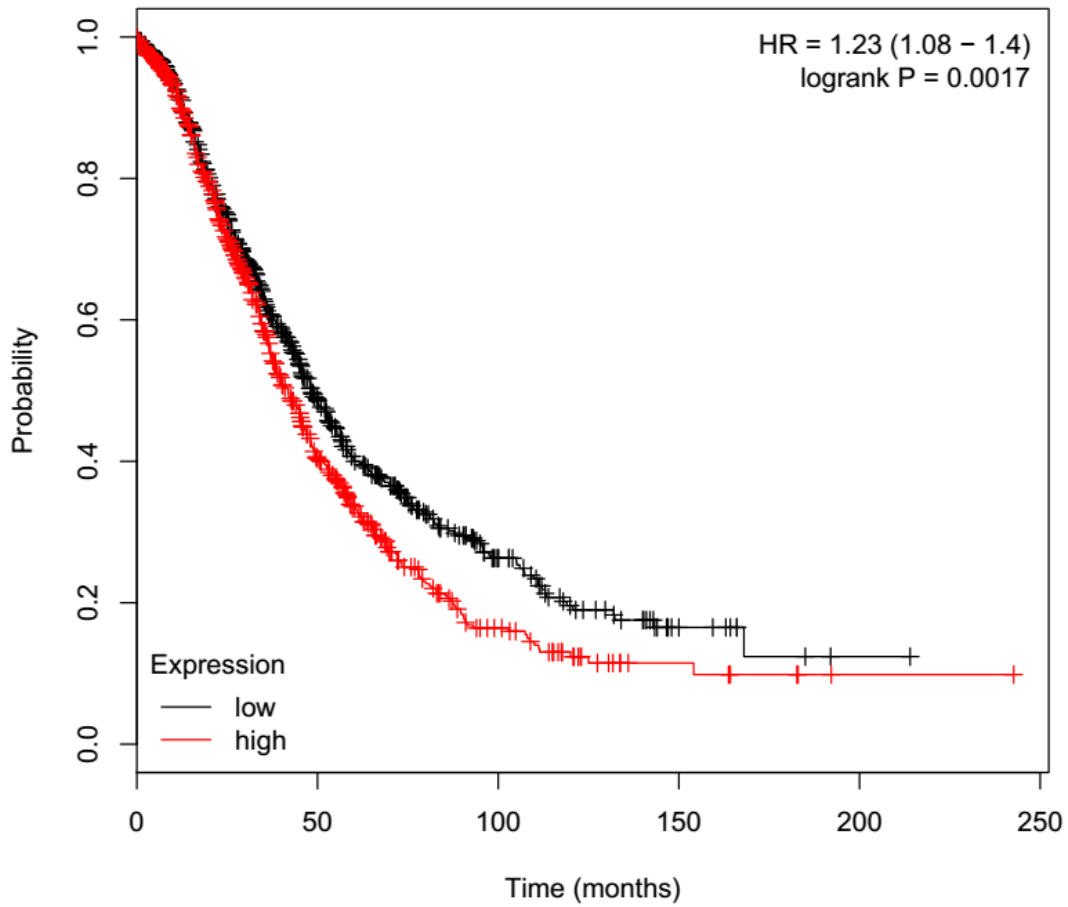
214079_at



	0	50	100	150	200	250
low	1041	246	52	7	0	0
high	615	182	45	11	2	0

10. DNAJB1

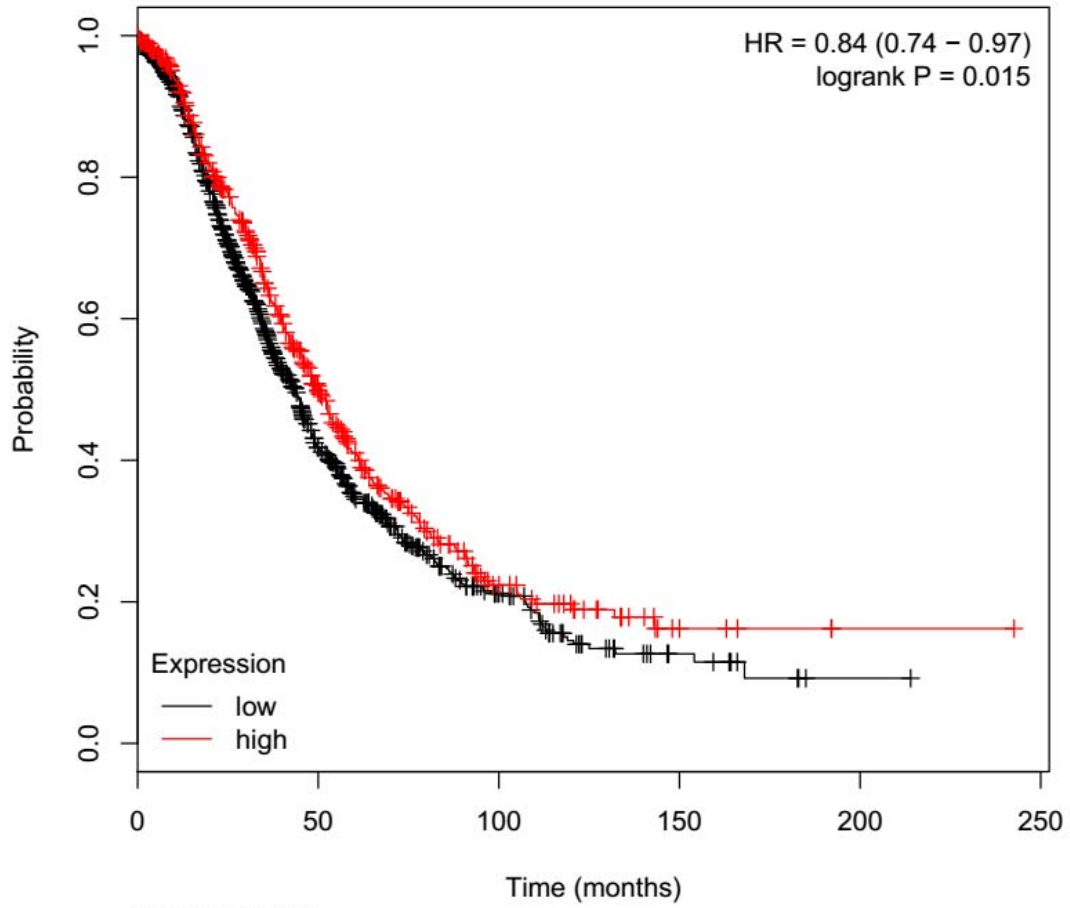
200666_s_at



	Number at risk					
	0	50	100	150	200	250
low	842	234	60	11	1	0
high	814	194	37	7	1	0

11. ERO1L

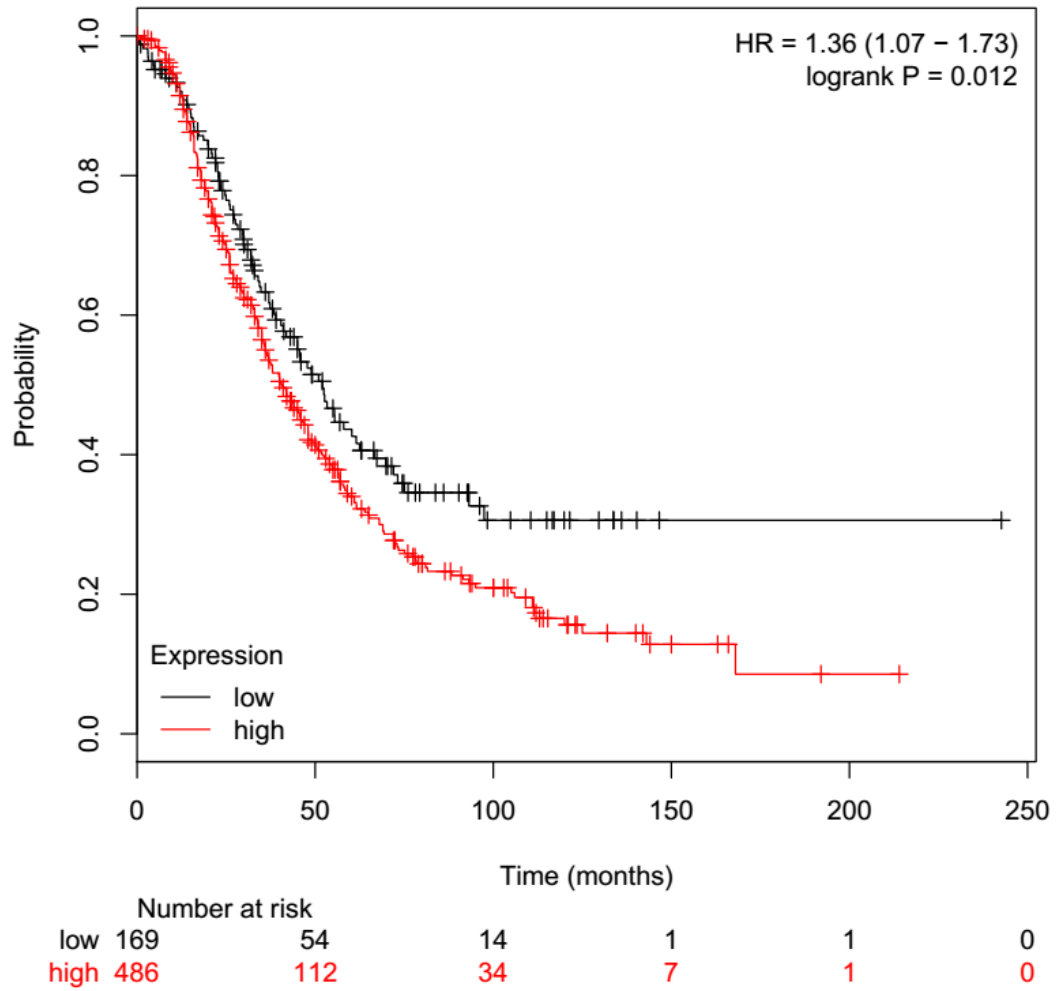
218498_s_at



	Number at risk					
	0	50	100	150	200	250
low	1107	258	60	11	1	0
high	549	170	37	7	1	0

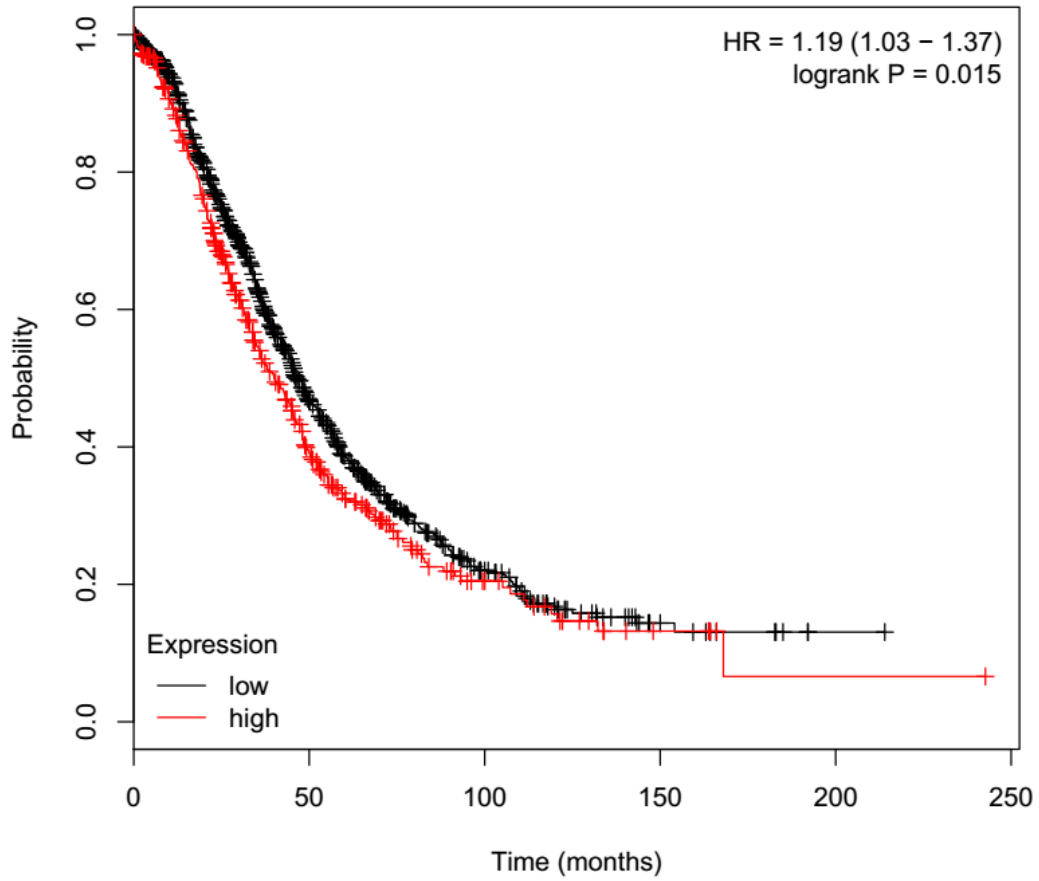
12. GFM1

225153_at



13. GGT5

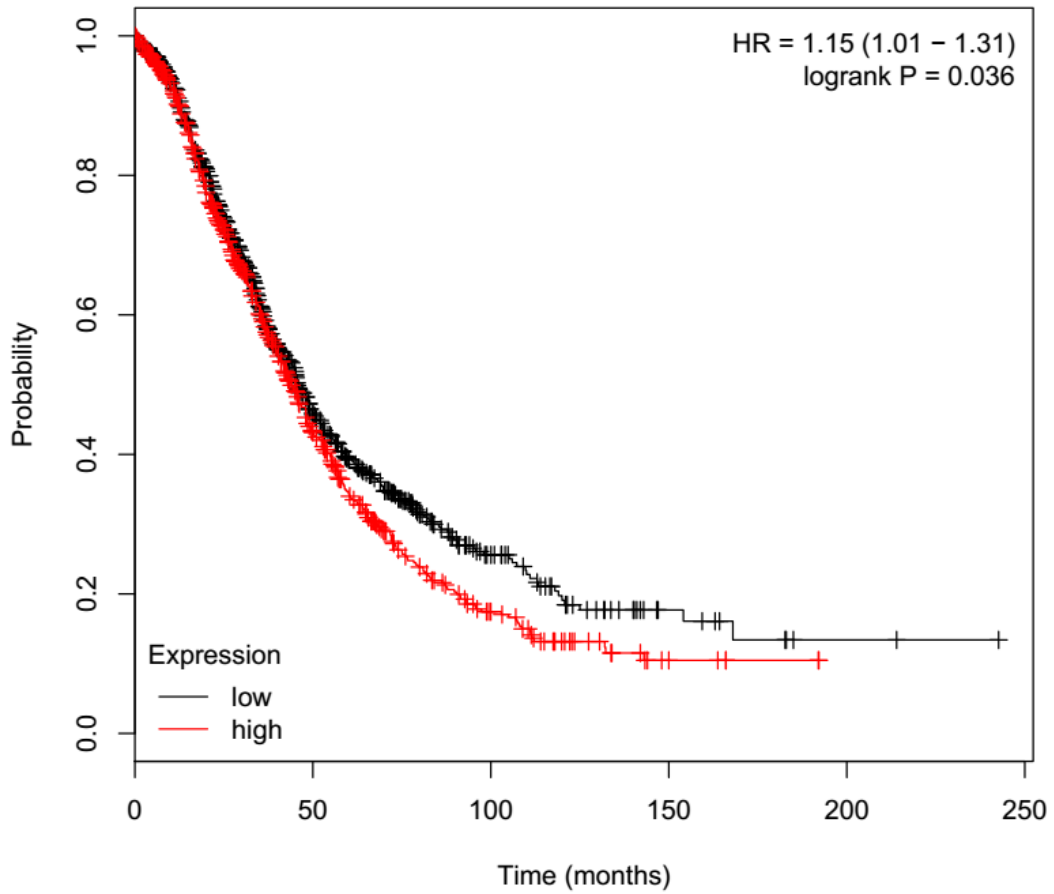
205582_s_at



	Number at risk				
	0	50	100	150	200
low	1215	315	73	13	1
high	441	113	24	5	1

14. GLDC

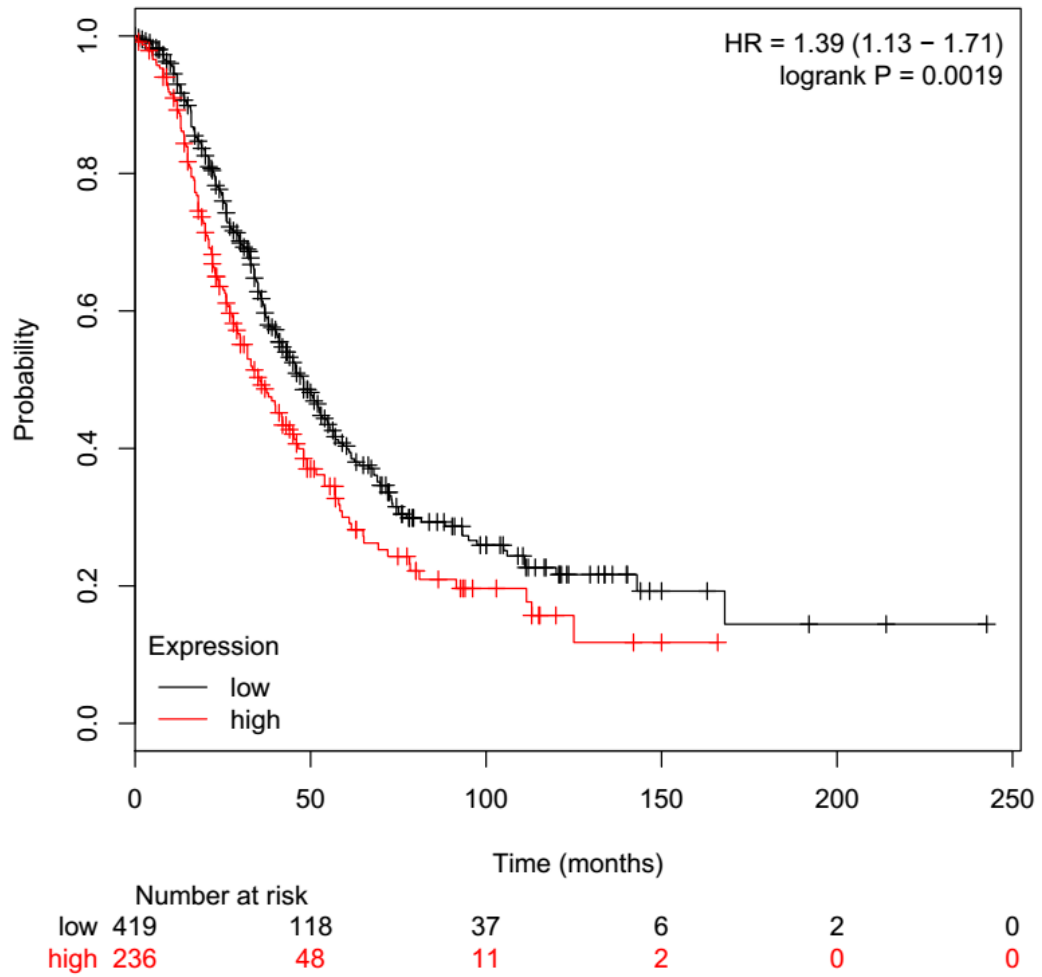
204836_at



		0	50	100	150	200	250
low	918	231	52	11	2	0	
high	738	197	45	7	0	0	

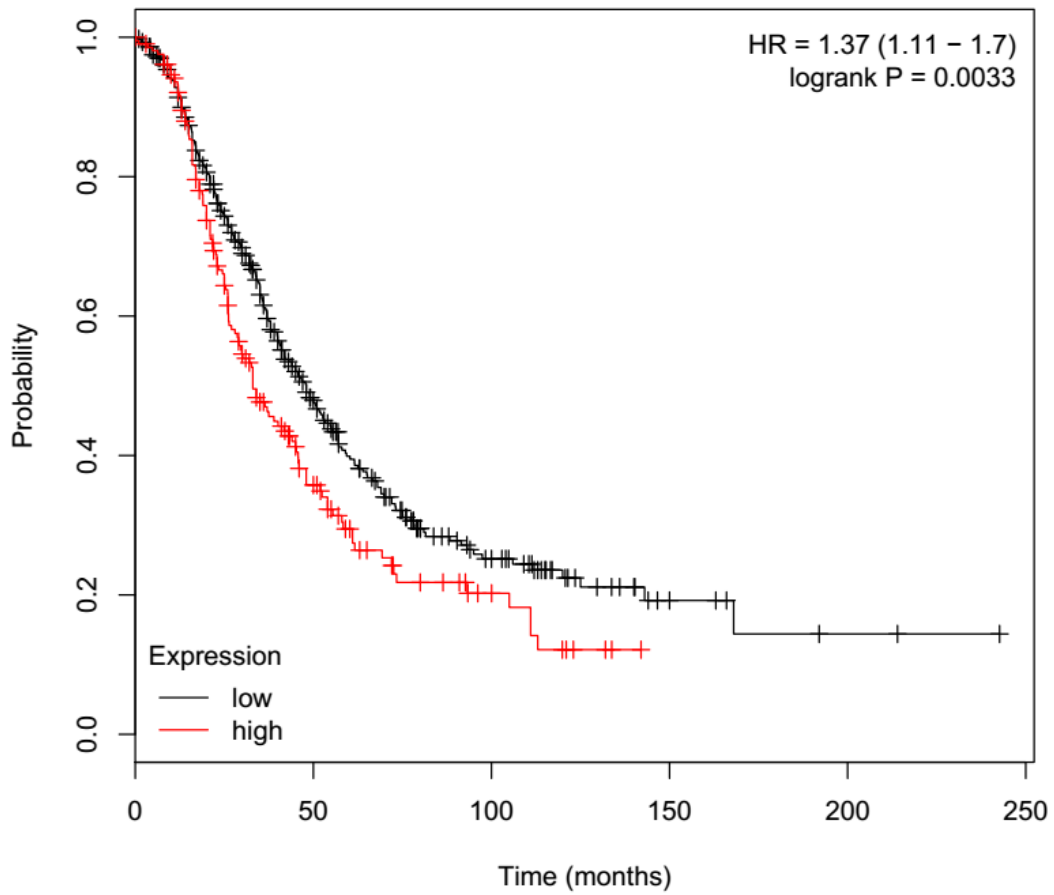
15. GNAI1

227692_at



16. GNB4

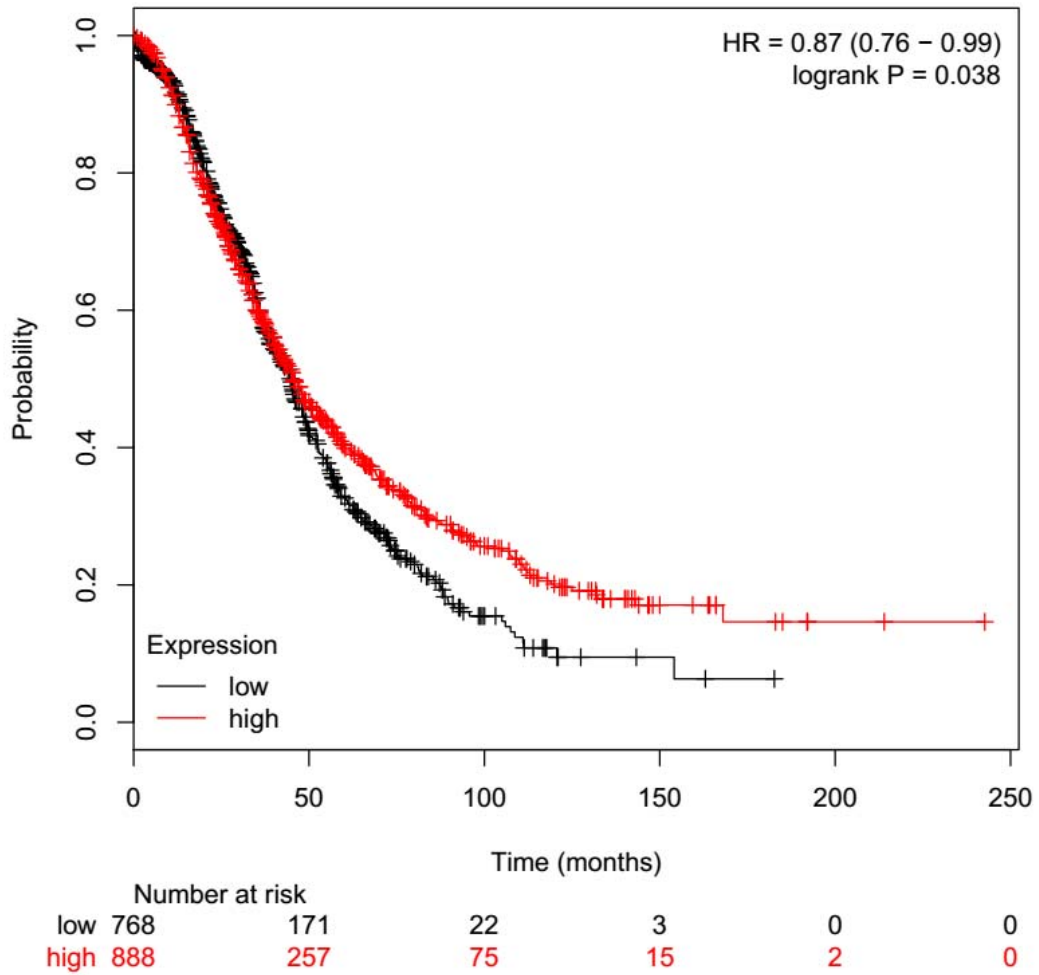
225710_at



	Number at risk					
	0	50	100	150	200	250
low	447	121	37	8	2	0
high	208	45	11	0	0	0

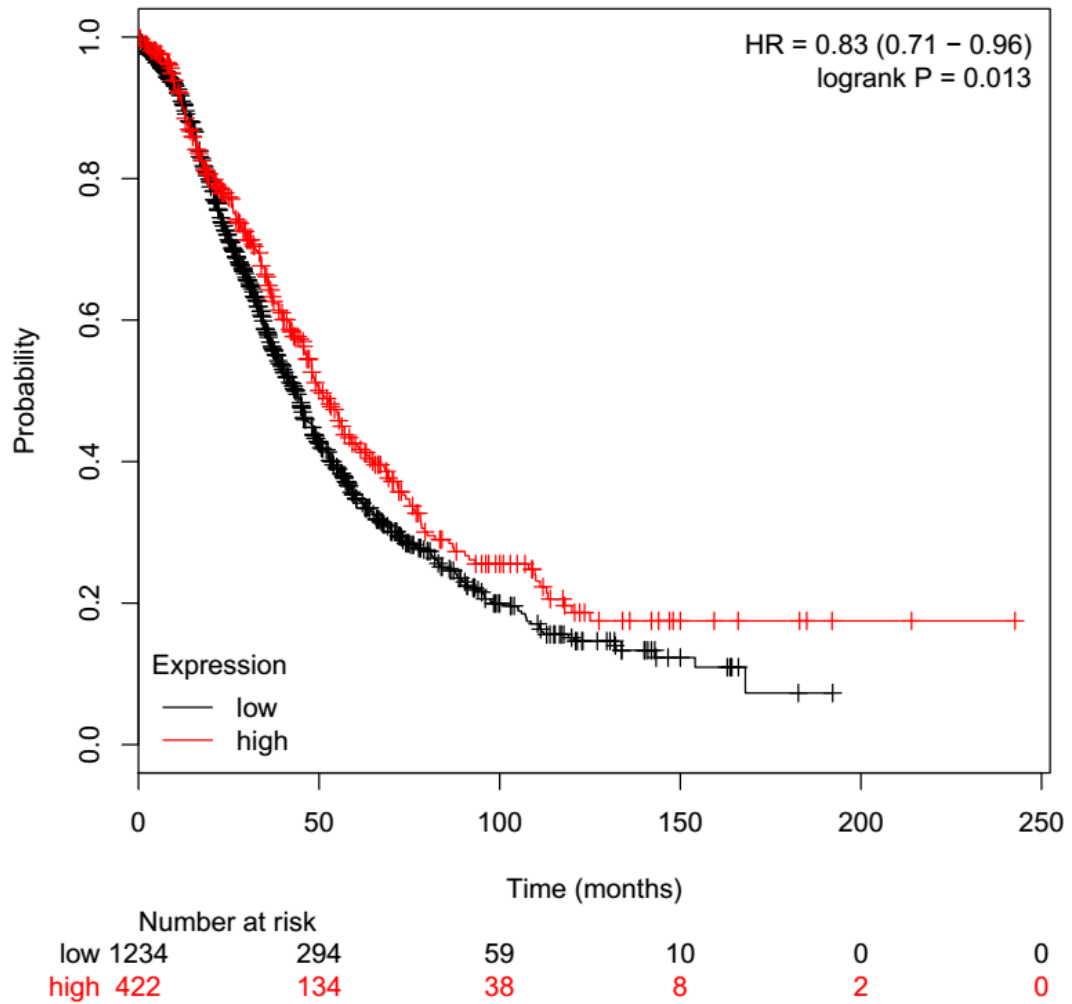
17. GSTM5

205752_s_at



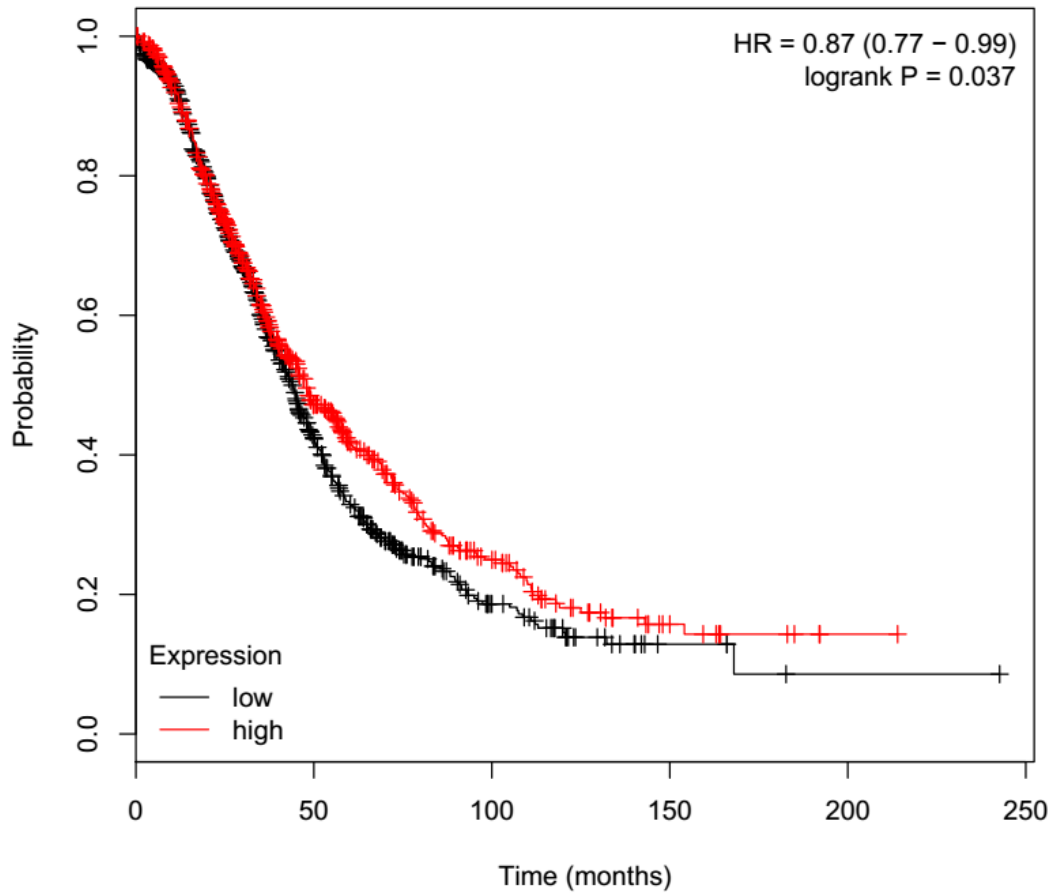
18. H1F0

208886_at



19. H1FX

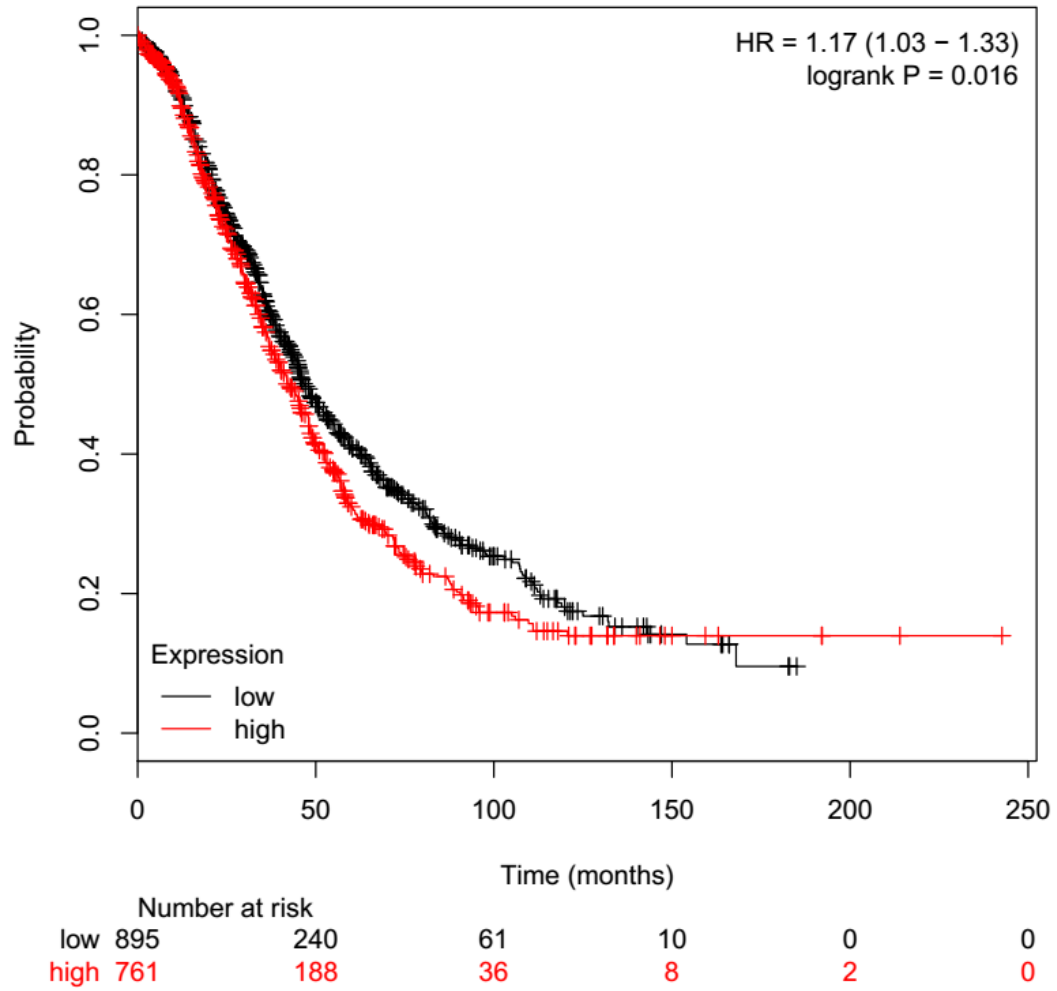
204805_s_at



	Number at risk					
	0	50	100	150	200	250
low	914	219	41	5	1	0
high	742	209	56	13	1	0

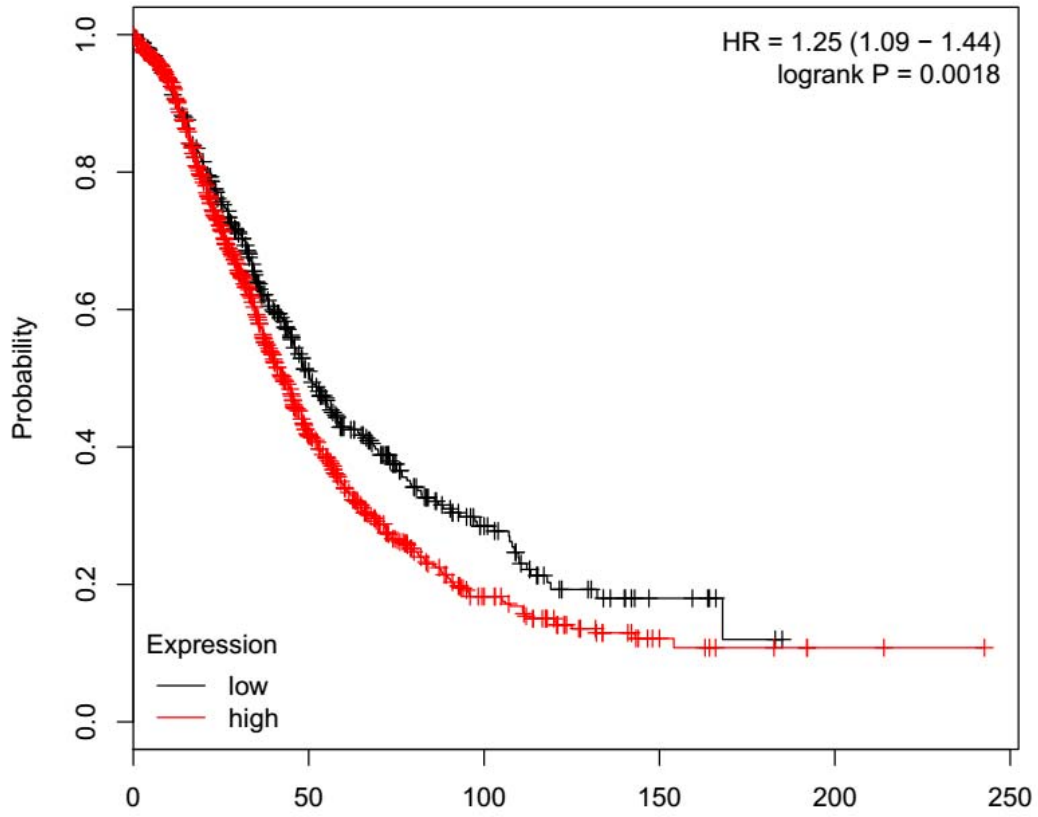
20. H2AFY

207168_s_at



21. H2AFZ

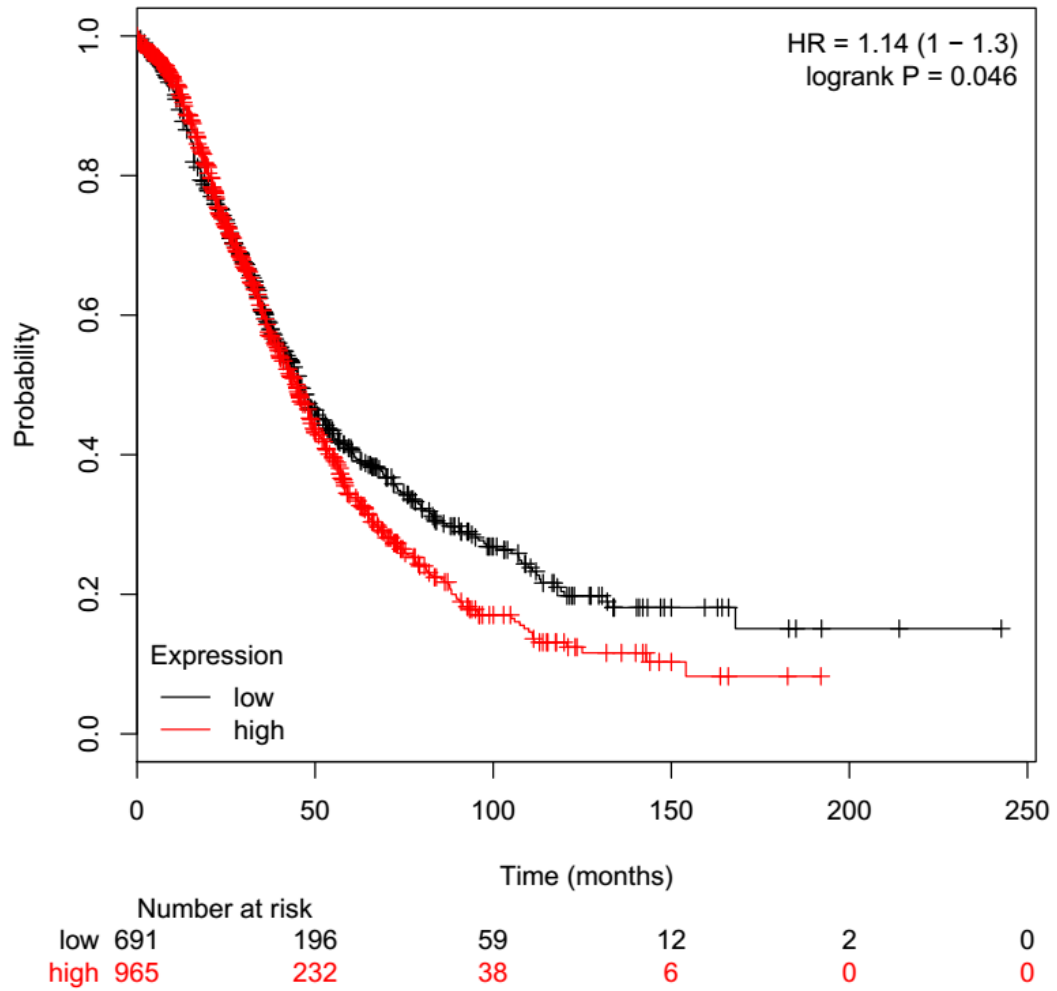
213911_s_at



	Number at risk					
	0	50	100	150	200	250
low	497	161	41	7	0	0
high	1159	267	56	11	2	0

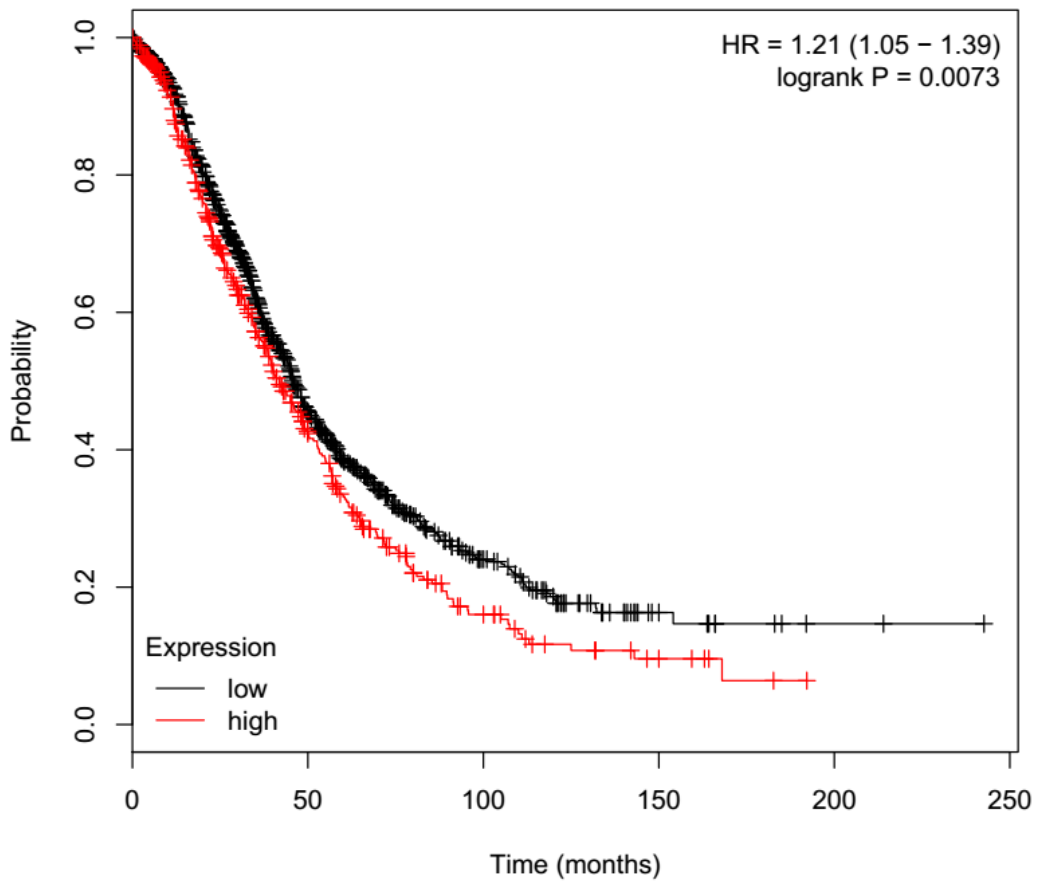
22. HEBP1

218450_at



23. HIBCH

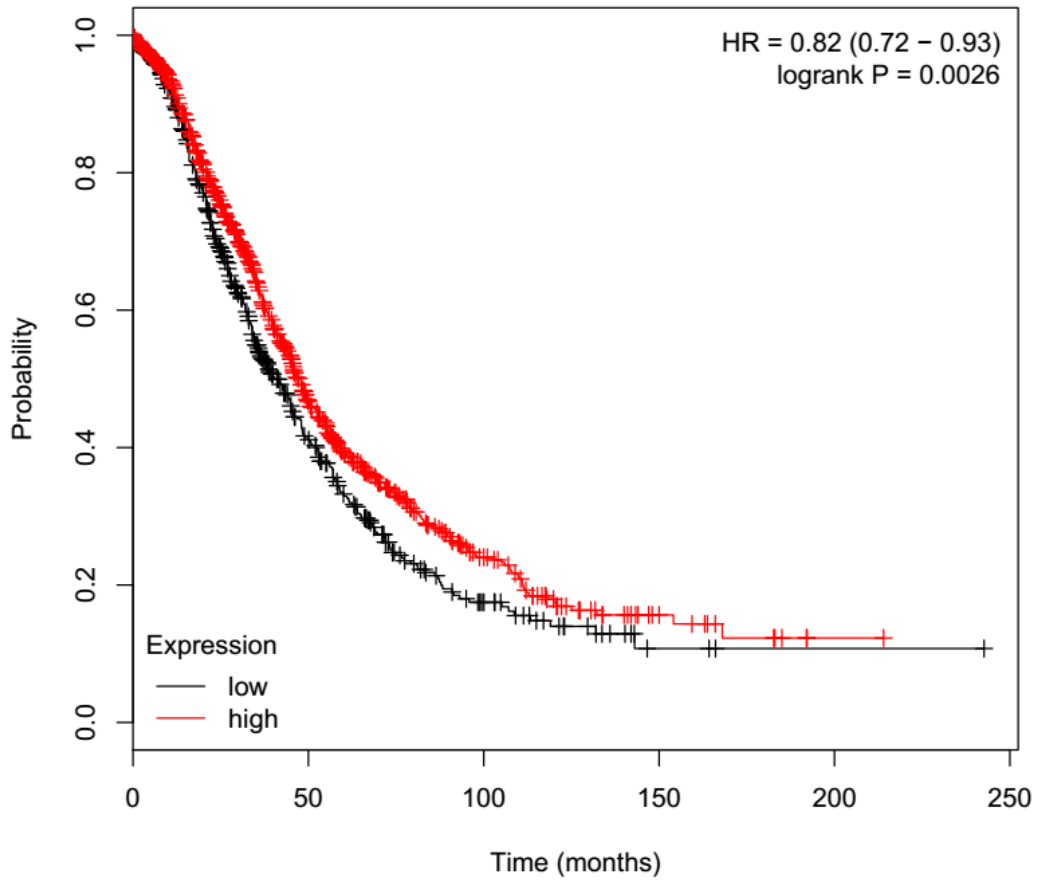
213374_x_at



	0	50	100	150	200	250
low	1208	310	70	11	2	0
high	448	118	27	7	0	0

24. HIST1H1C

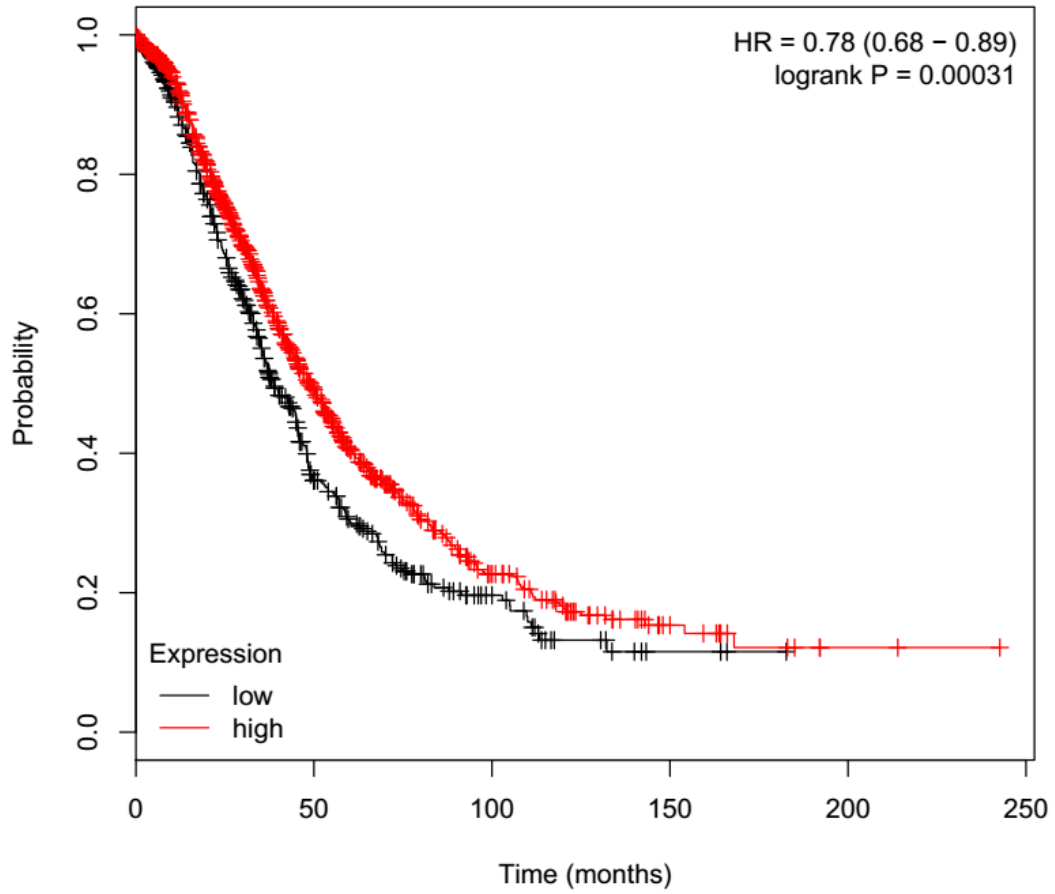
209398_at



		Number at risk				
	0	50	100	150	200	250
low	606	149	31	4	1	0
high	1050	279	66	14	1	0

25. HIST1H2BJ

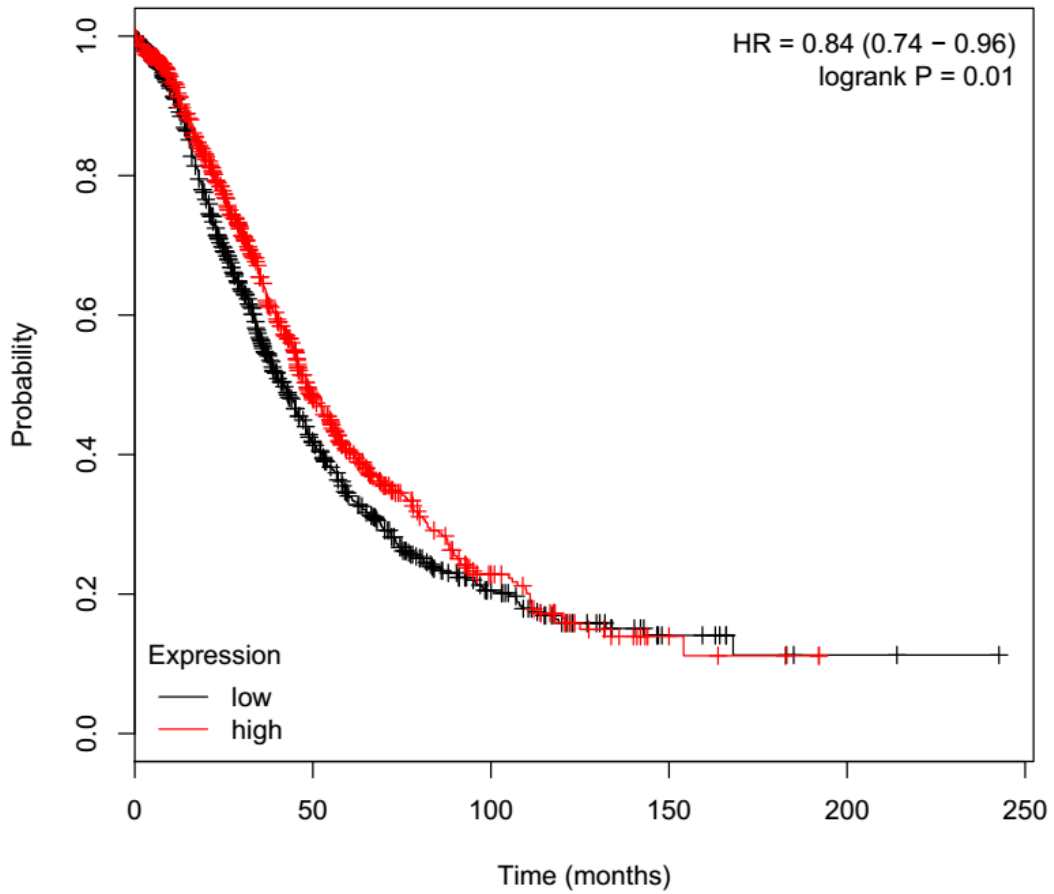
214502_at



	0	50	100	150	200	250
low	576	119	28	3	0	0
high	1080	309	69	15	2	0

26. HIST1H2BK

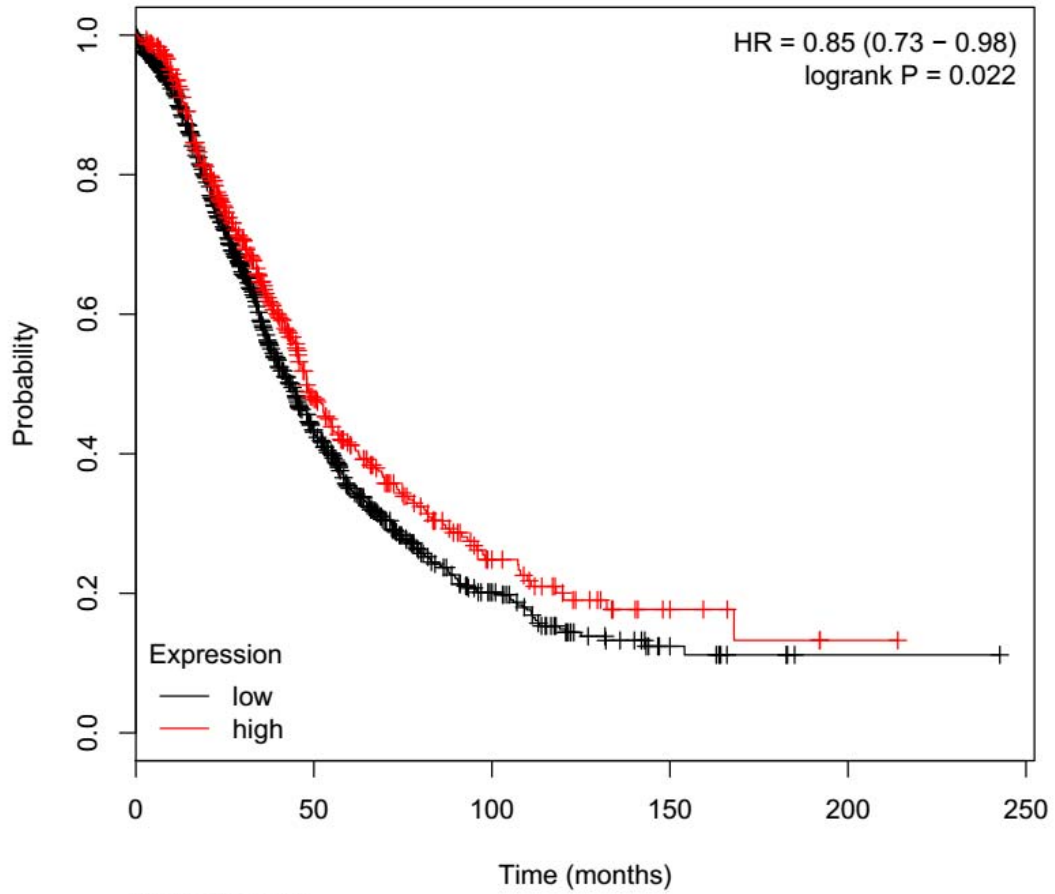
209806_at



	Number at risk					
	0	50	100	150	200	250
low	876	219	52	11	2	0
high	780	209	45	7	0	0

27. HIST1H4B

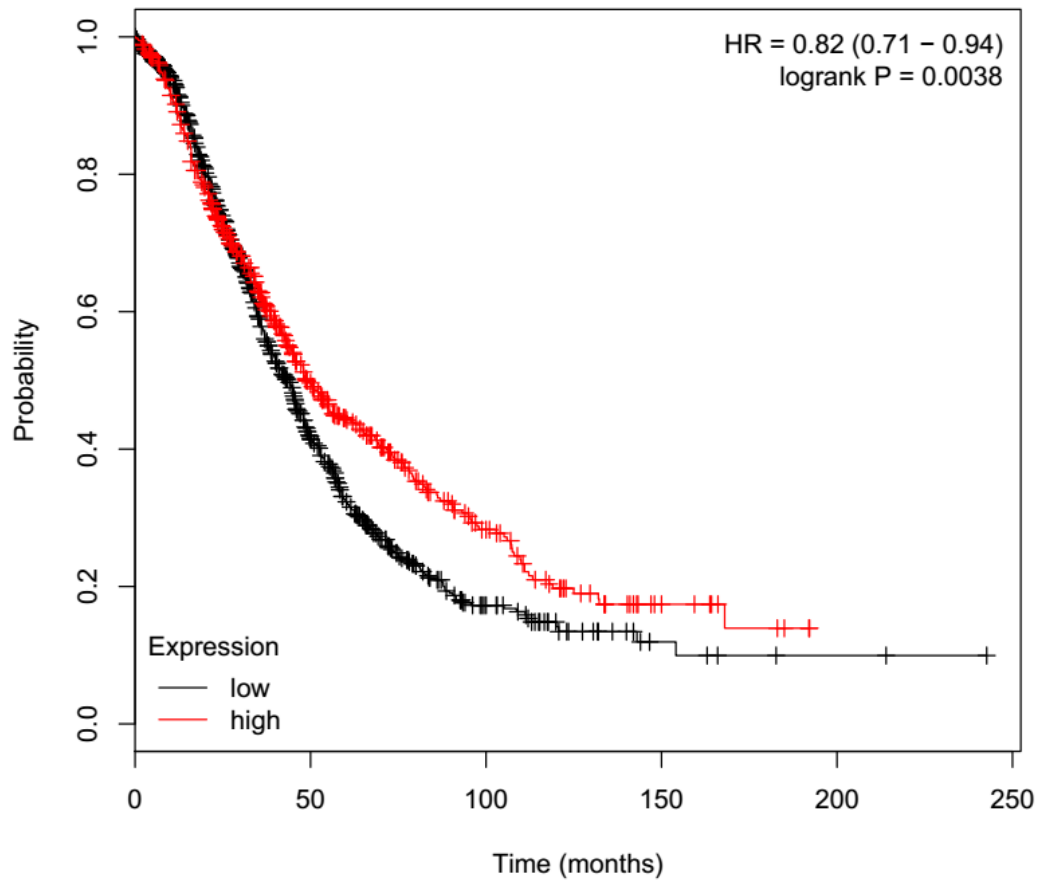
214516_at



	Number at risk					
	0	50	100	150	200	250
low	1177	289	62	11	1	0
high	479	139	35	7	1	0

28. HIST1H4D

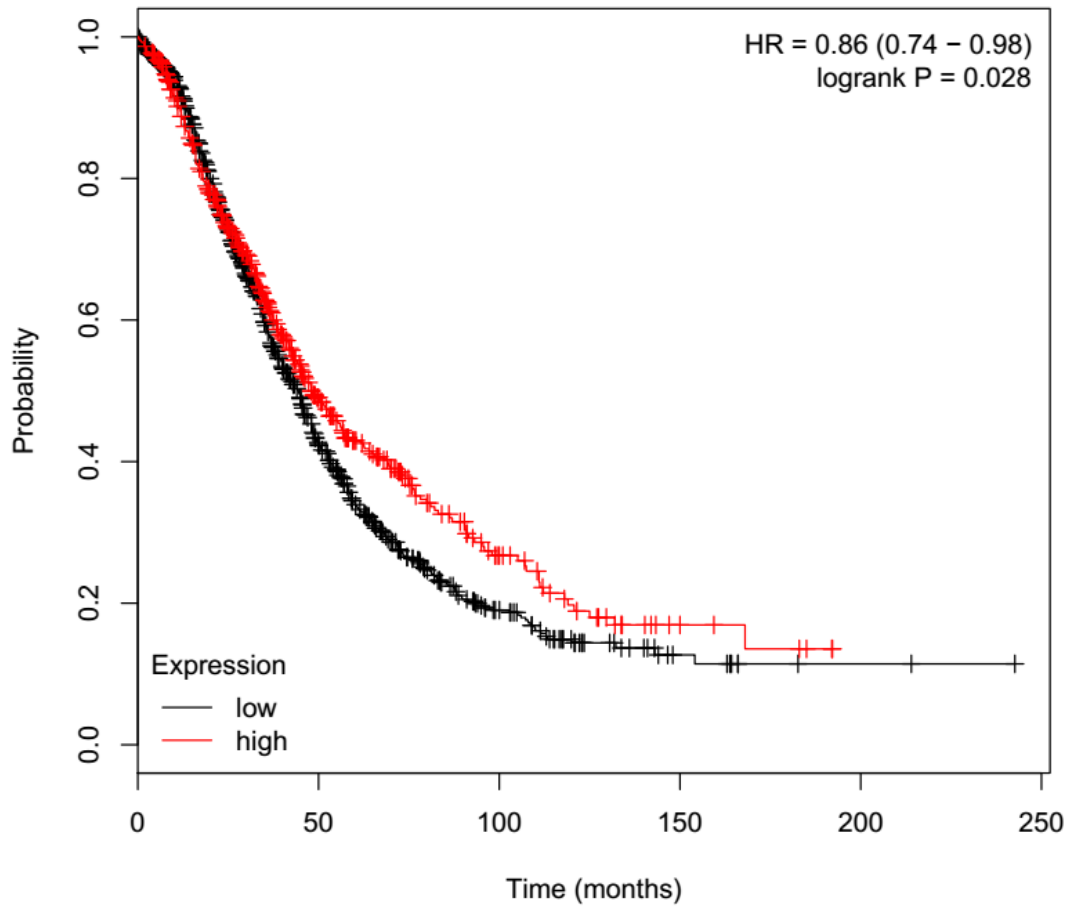
208076_at



	Number at risk					
	0	50	100	150	200	250
low	1095	244	41	6	2	0
high	561	184	56	12	0	0

29. HIST1H4F

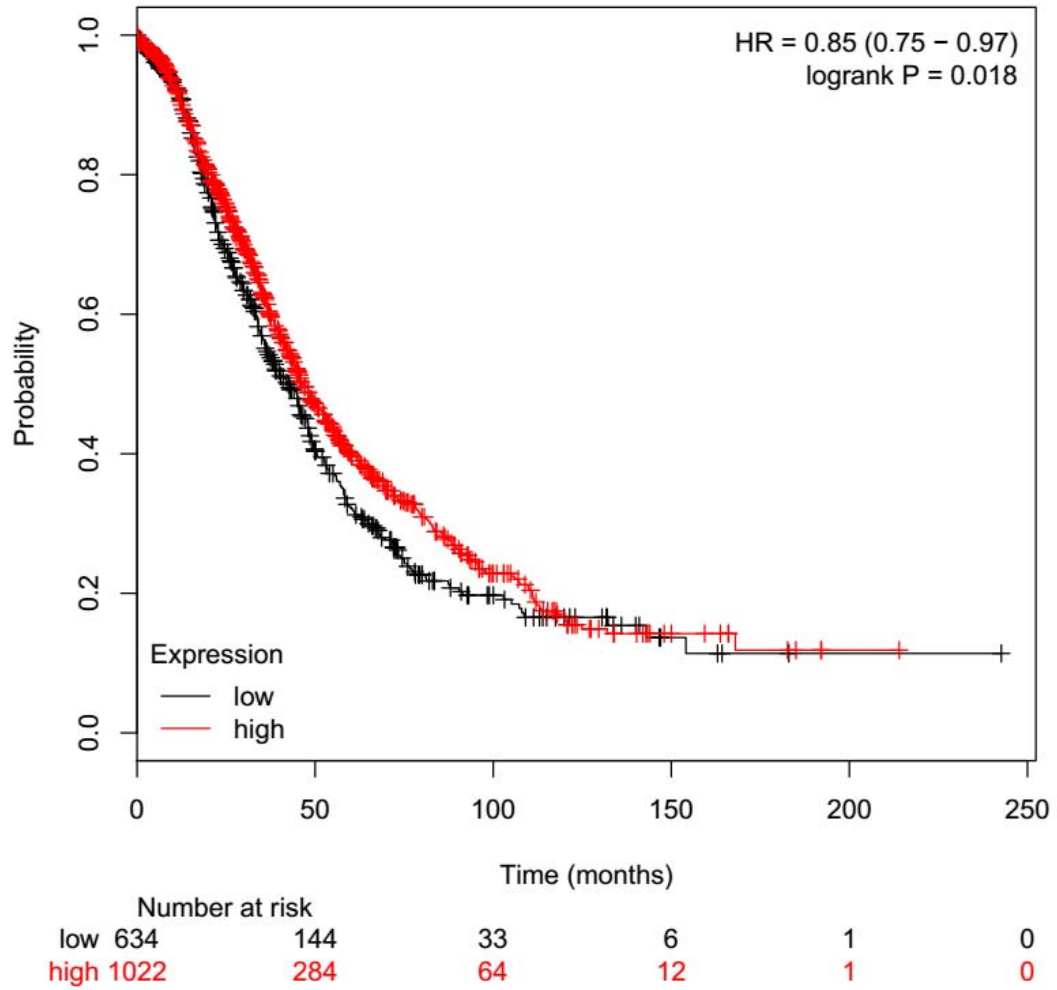
208026_at



	Number at risk					
	0	50	100	150	200	250
low	1131	273	57	10	2	0
high	525	155	40	8	0	0

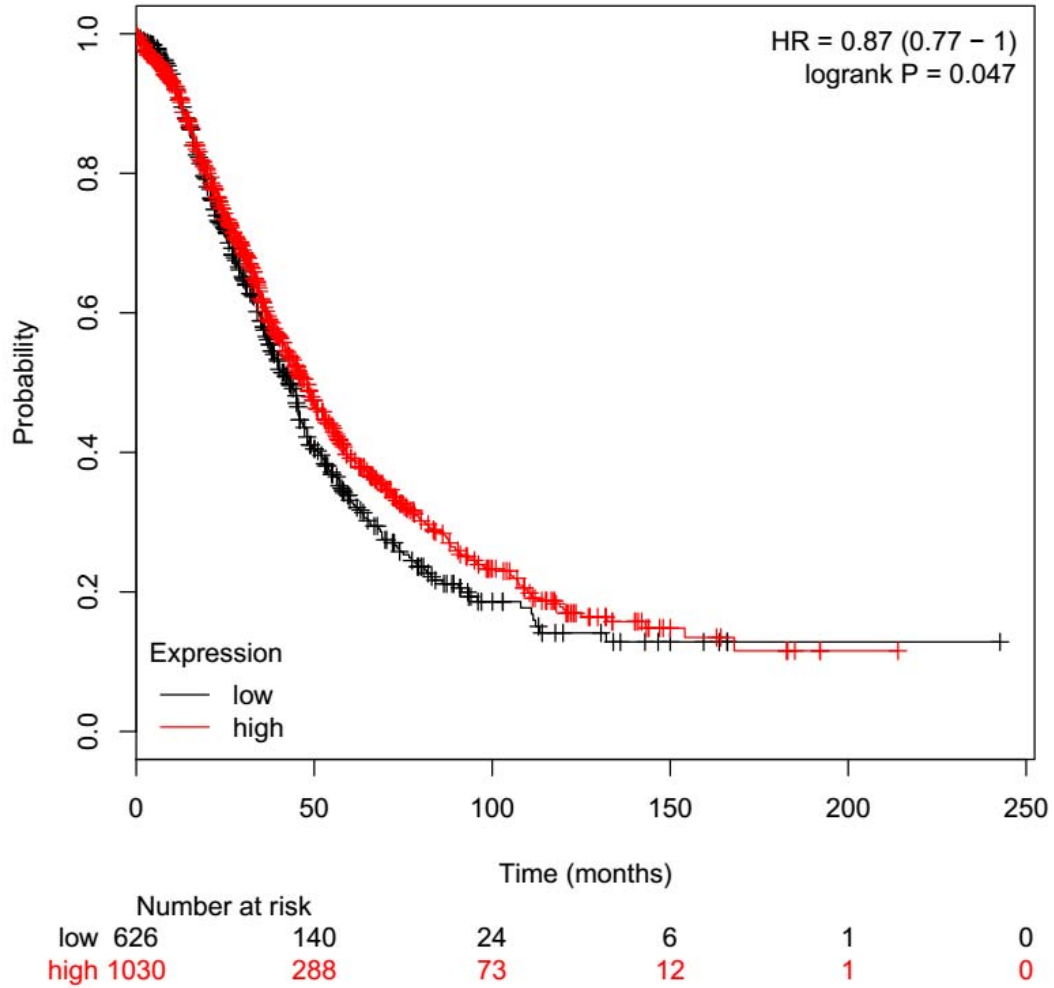
30. HIST1H4H

208180_s_at



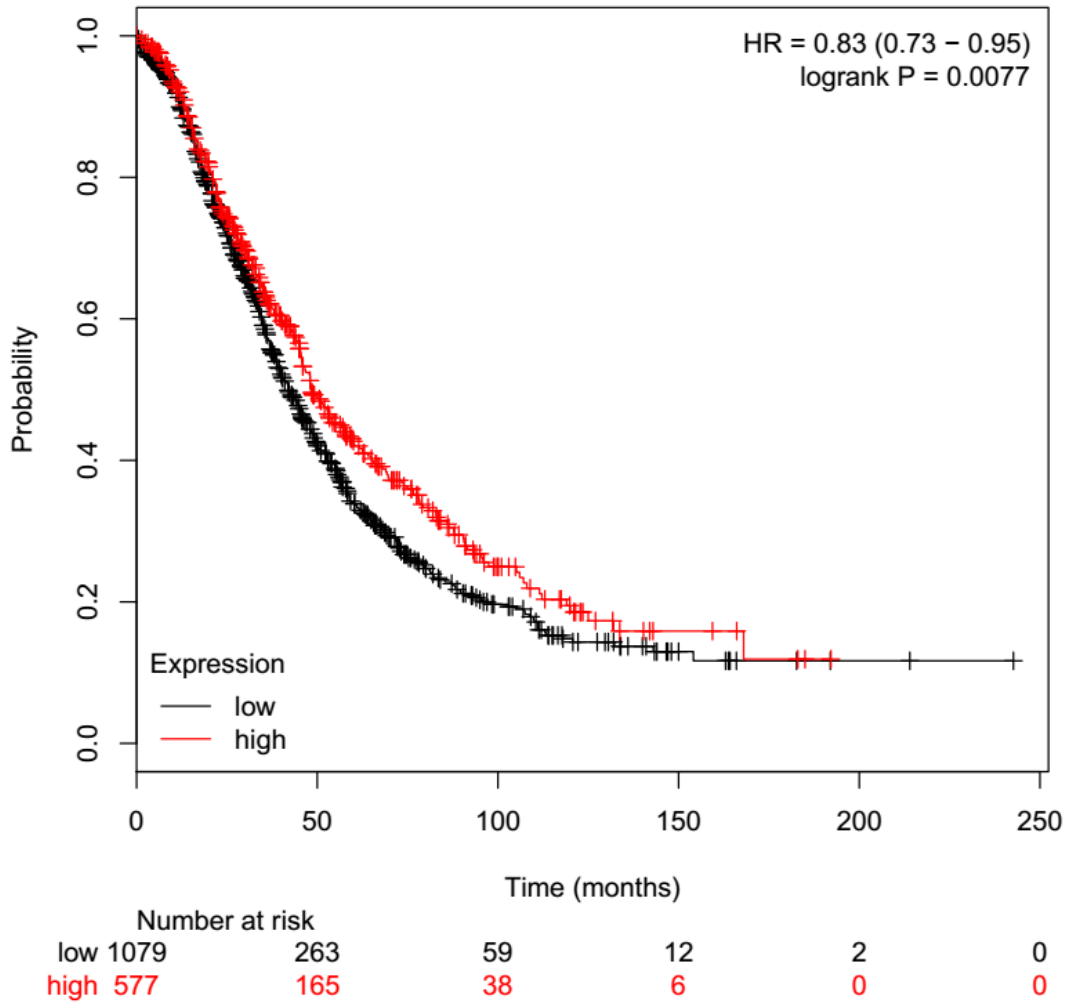
31. HIST1H4J

214463_x_at



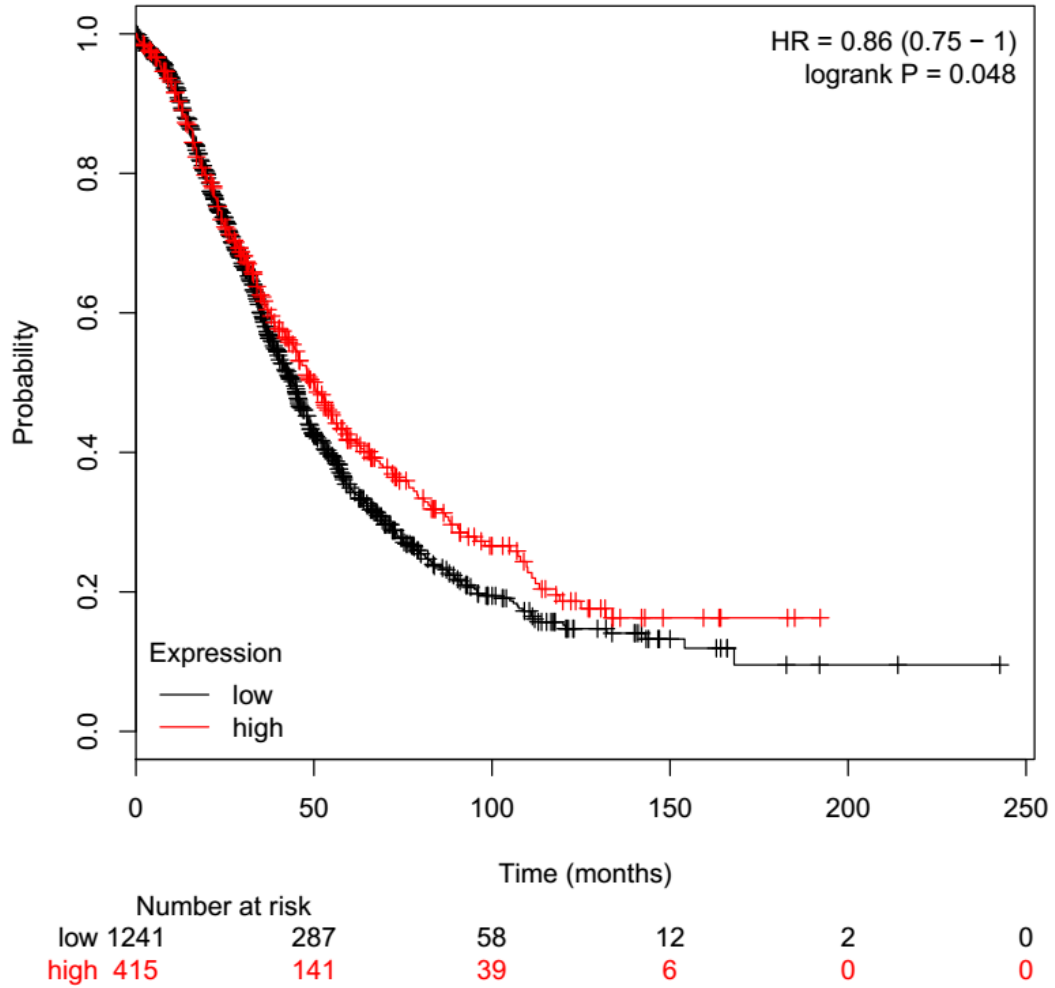
32. HSD11B1

205404_at



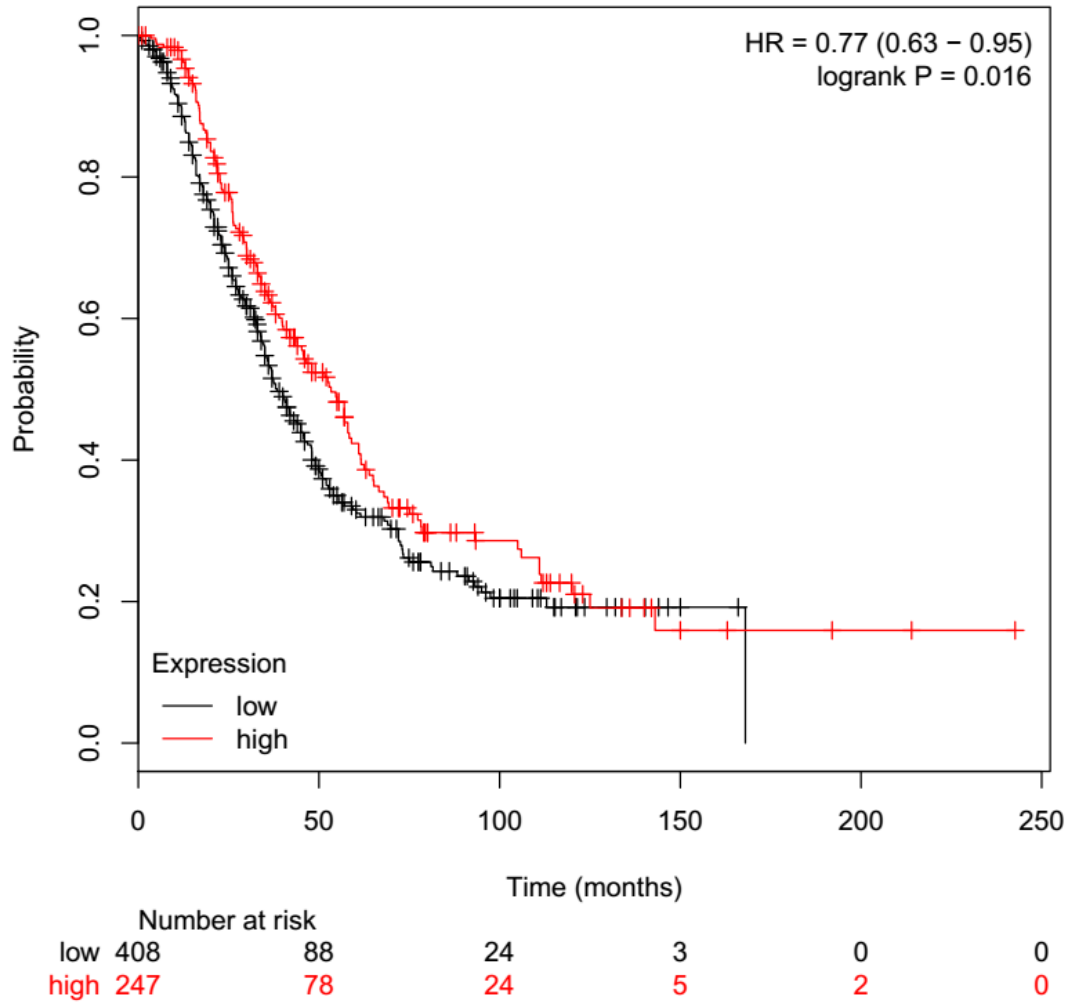
33. HYOU1

200825_s_at



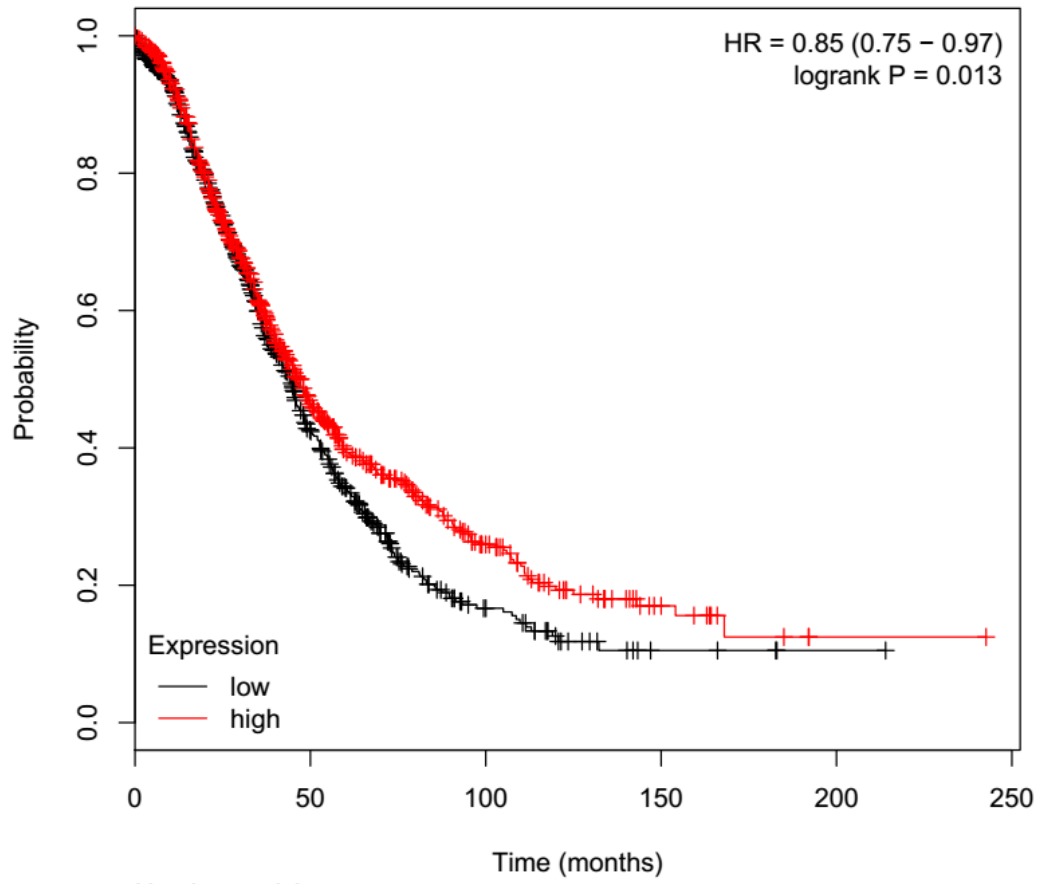
34. MRPL41

227186_s_at



35. MRPL46

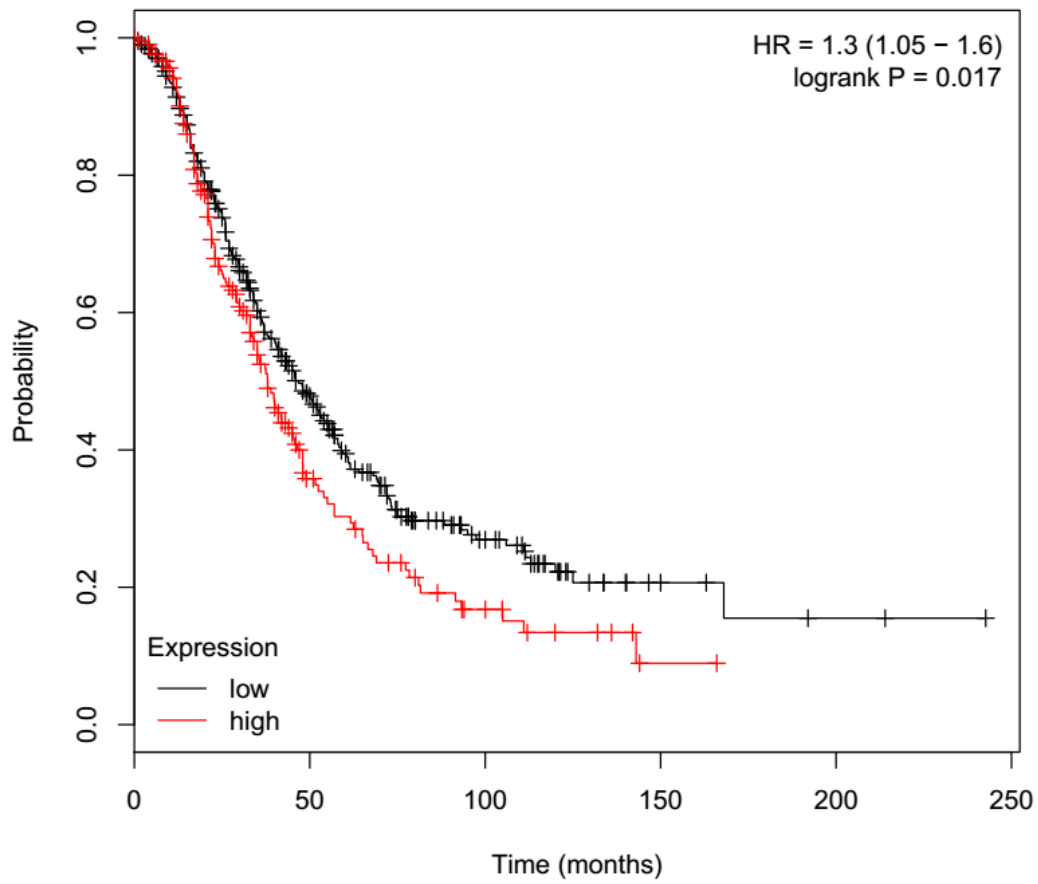
219244_s_at



	0	50	100	150	200	250
low	753	192	32	4	1	0
high	903	236	65	14	1	0

36. MRPL53

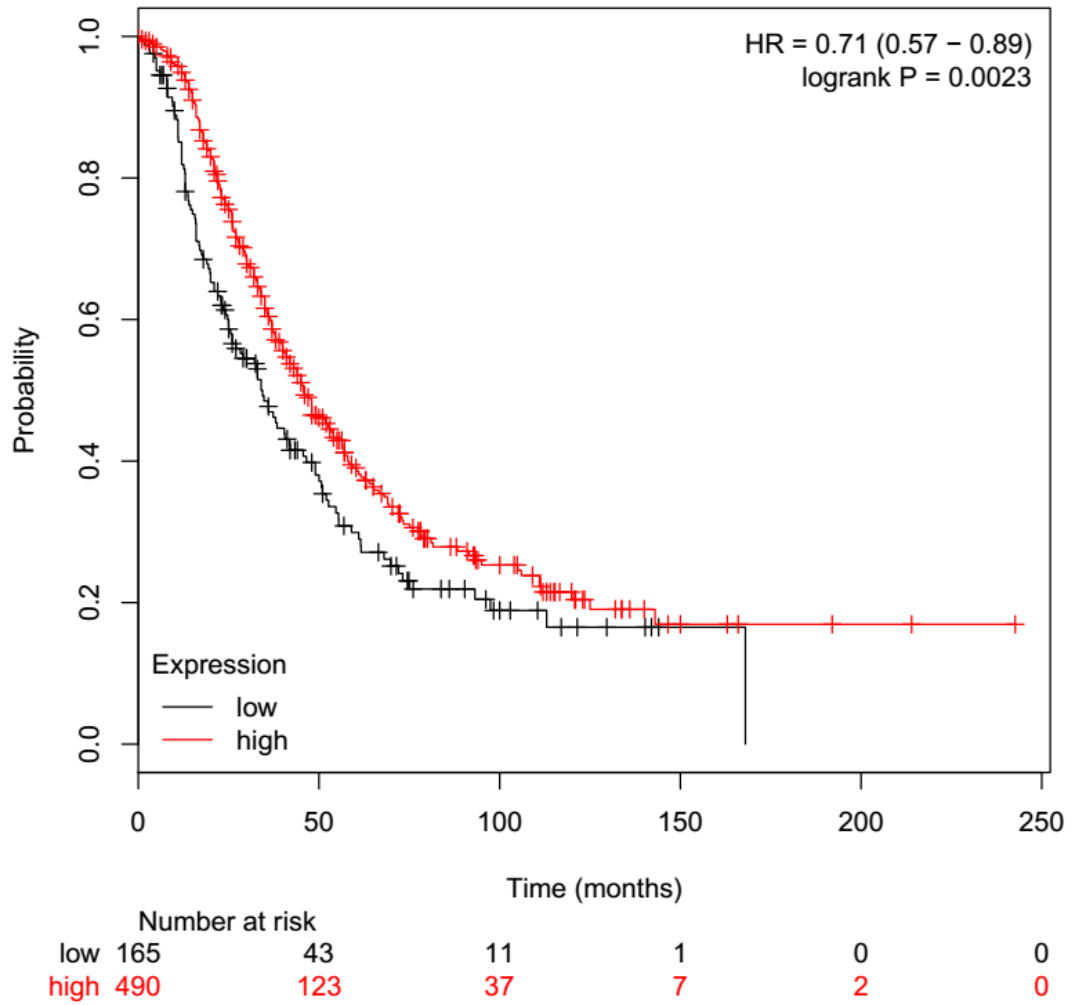
225523_at



	Number at risk					
	0	50	100	150	200	250
low	443	125	36	7	2	0
high	212	41	12	1	0	0

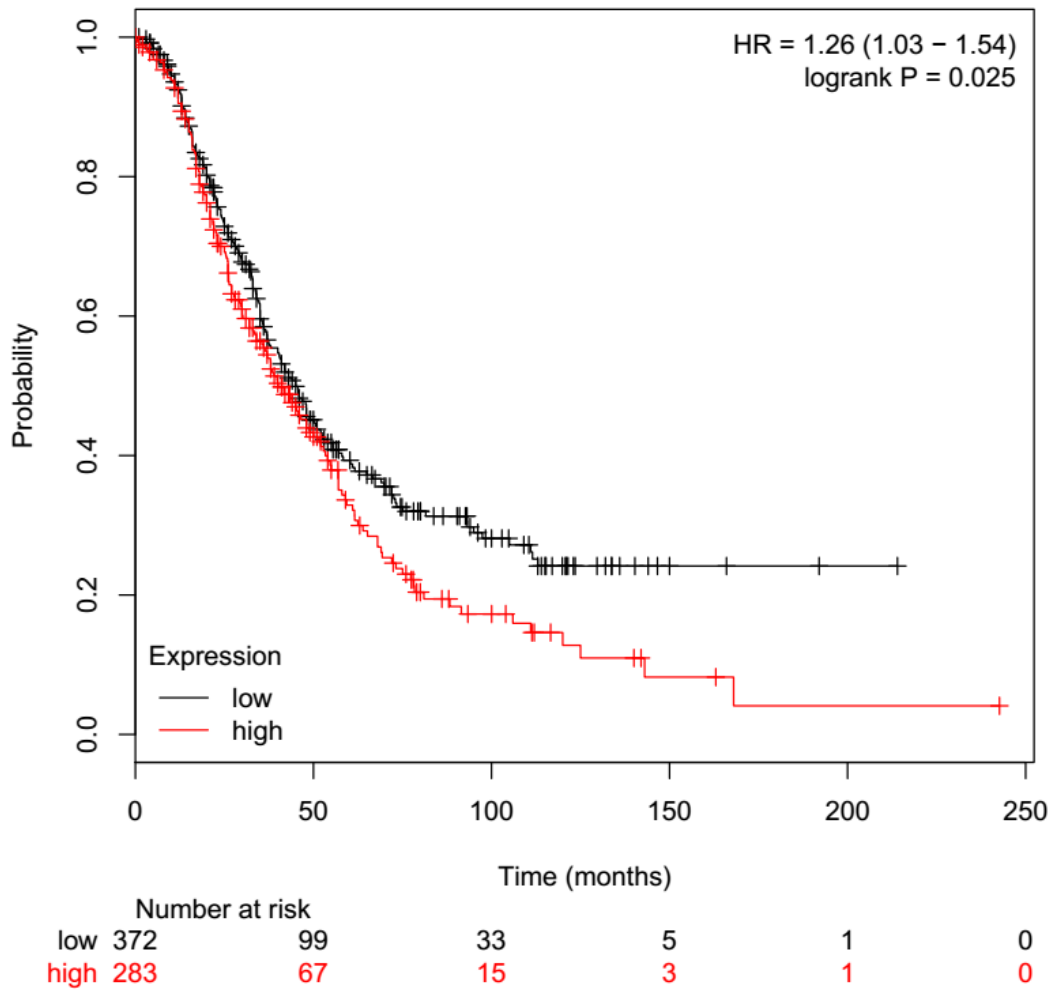
37. MRPL54

225797_at



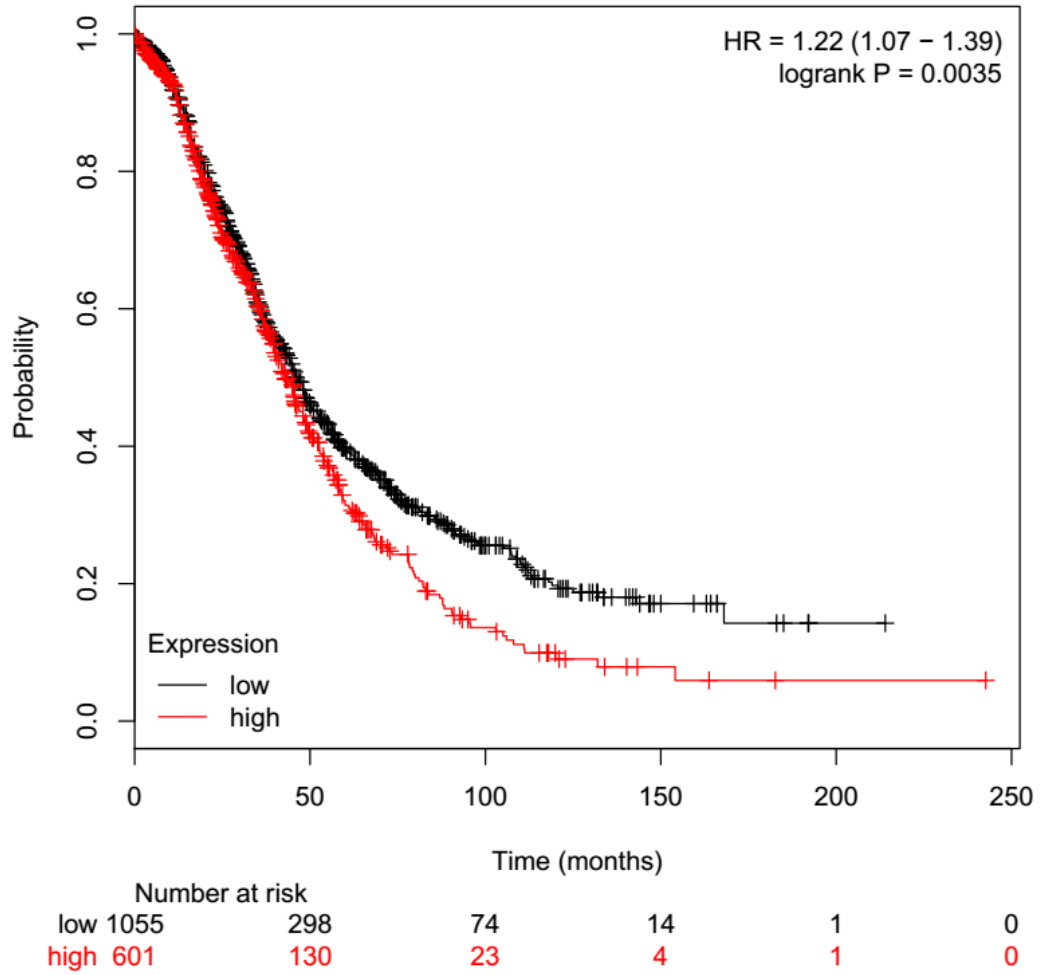
38. MRPS9

226749_at



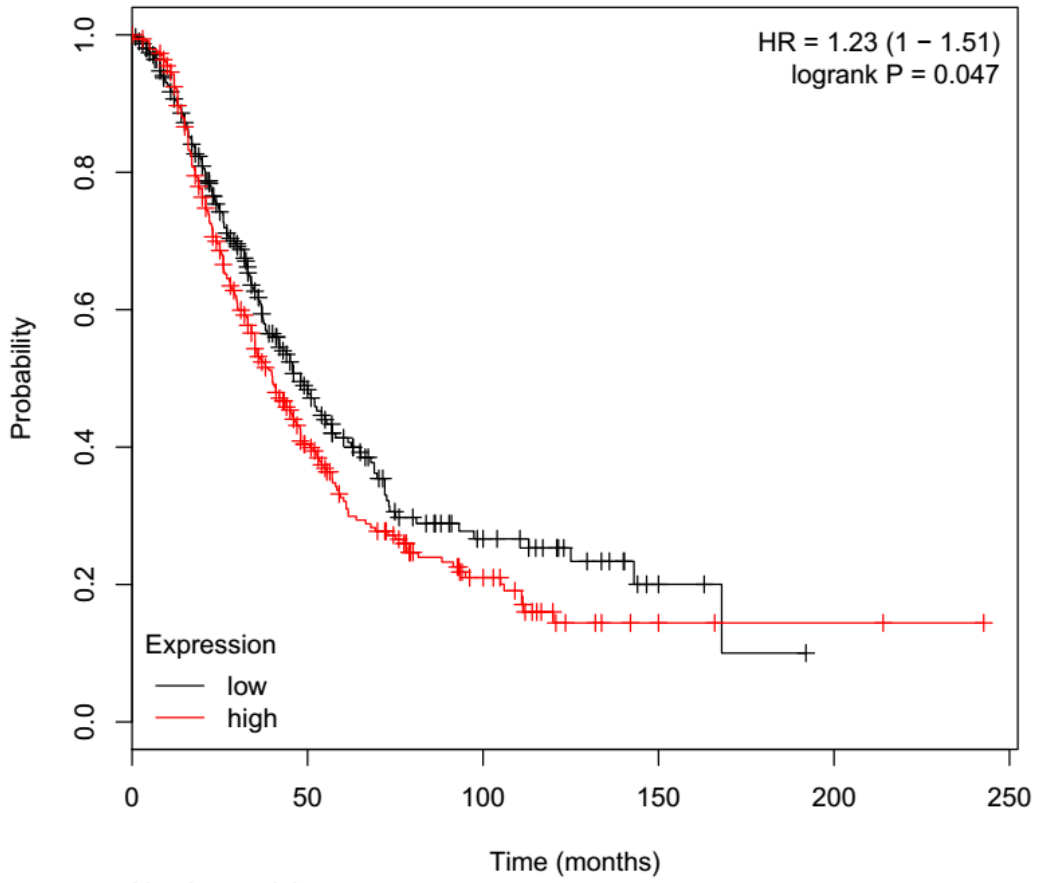
39. MRPS12

204331_s_at



40. MRPS15

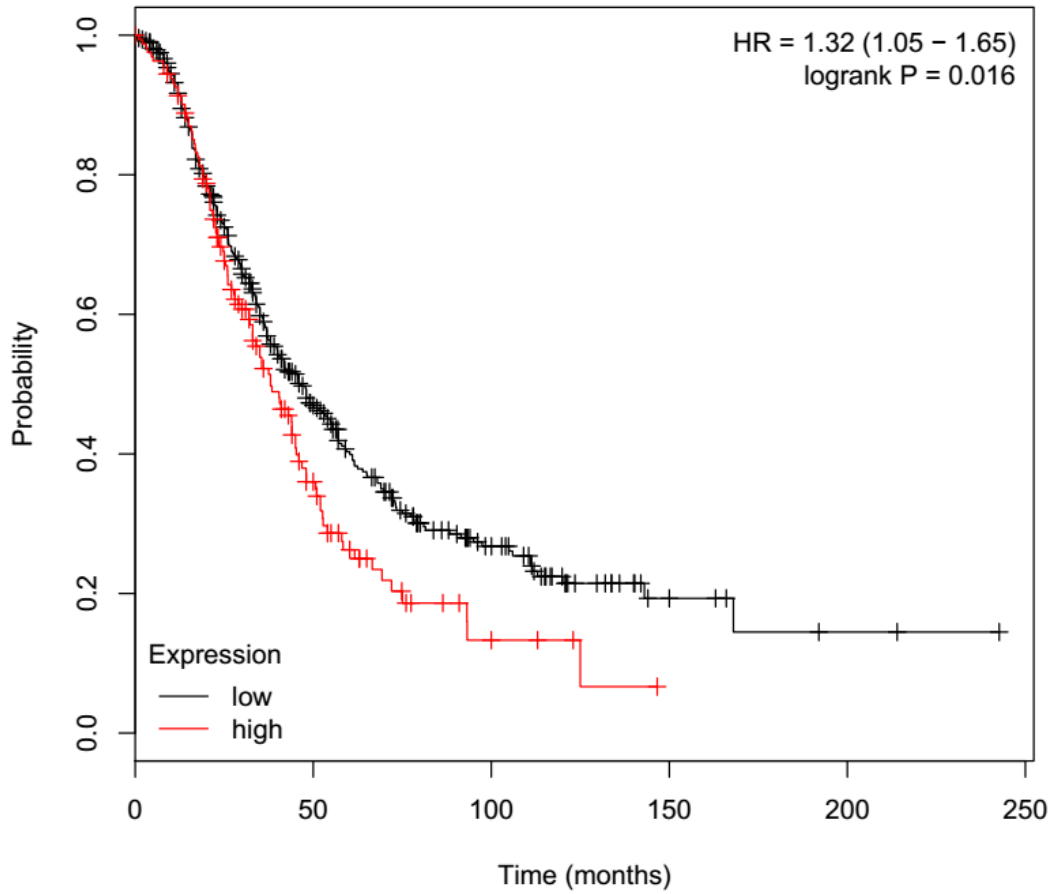
226296_s_at



	Number at risk					
	0	50	100	150	200	250
low	317	82	23	4	0	0
high	338	84	25	4	2	0

41. OGN

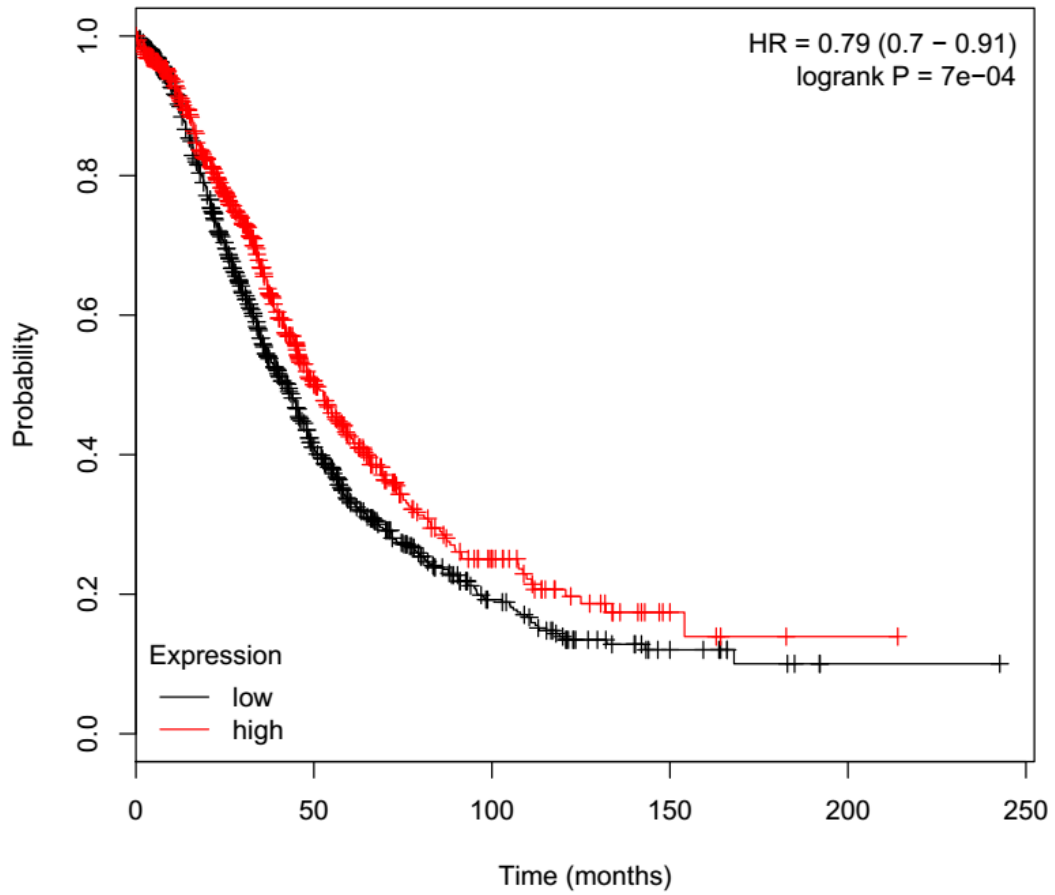
222722_at



	0	50	100	150	200	250
low	490	130	43	8	2	0
high	165	36	5	0	0	0

42. PDIA5

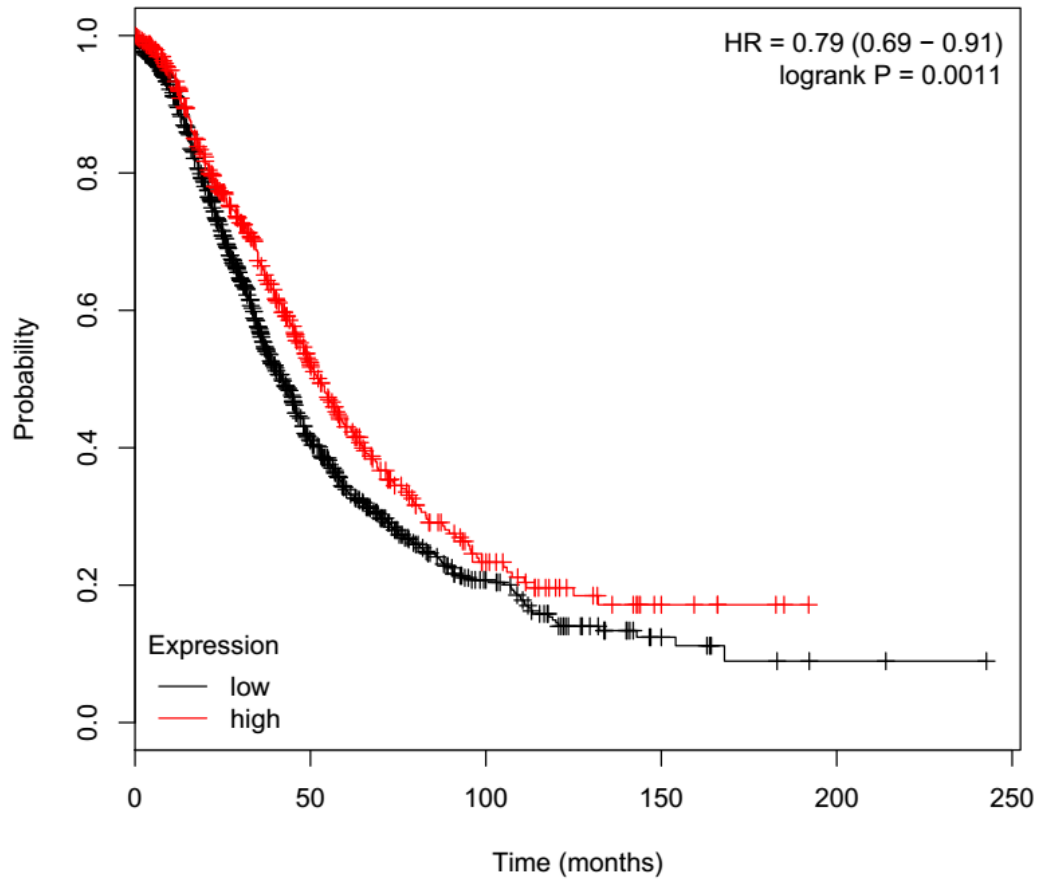
203857_s_at



	Number at risk					
	0	50	100	150	200	250
low	964	247	55	12	1	0
high	692	181	42	6	1	0

43. PECR

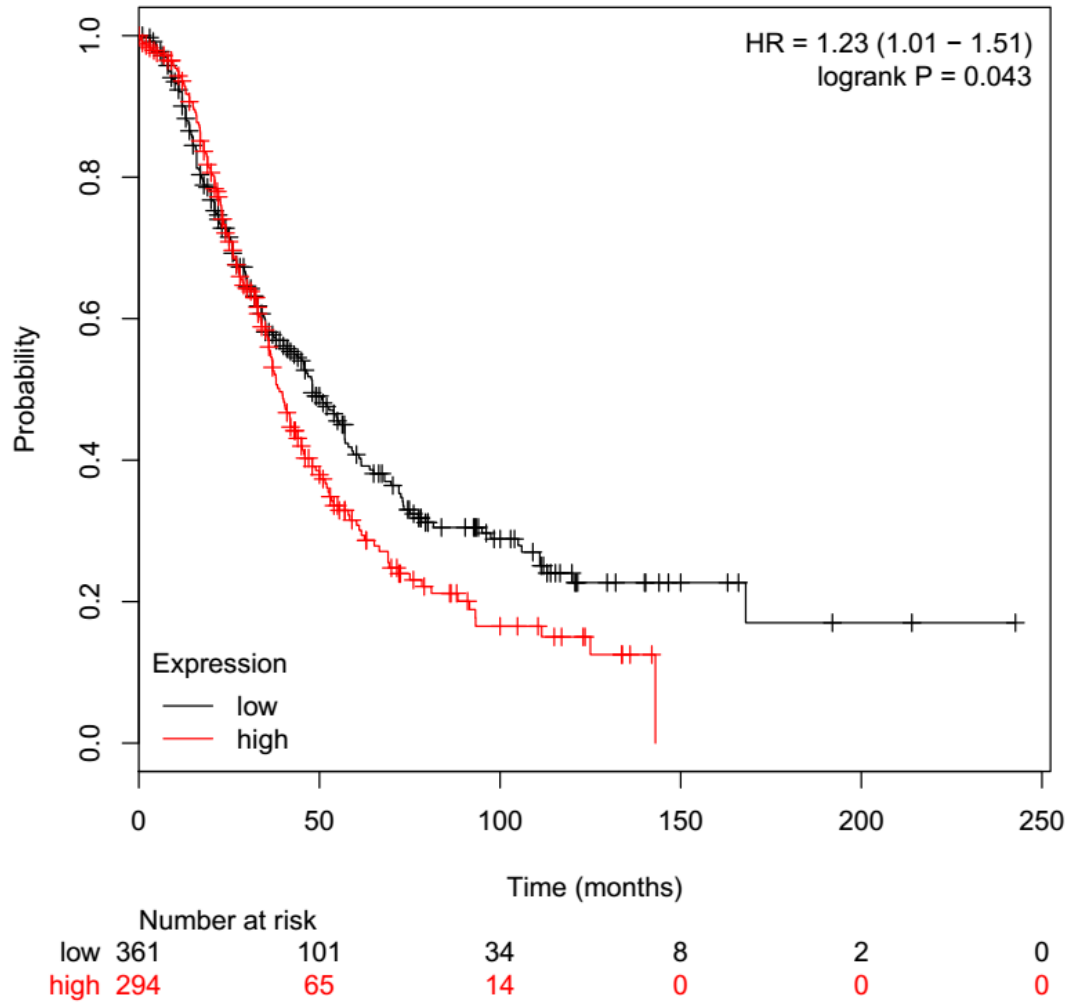
221142_s_at



	Number at risk					
low	1114	269	61	11	2	0
high	542	159	36	7	0	0

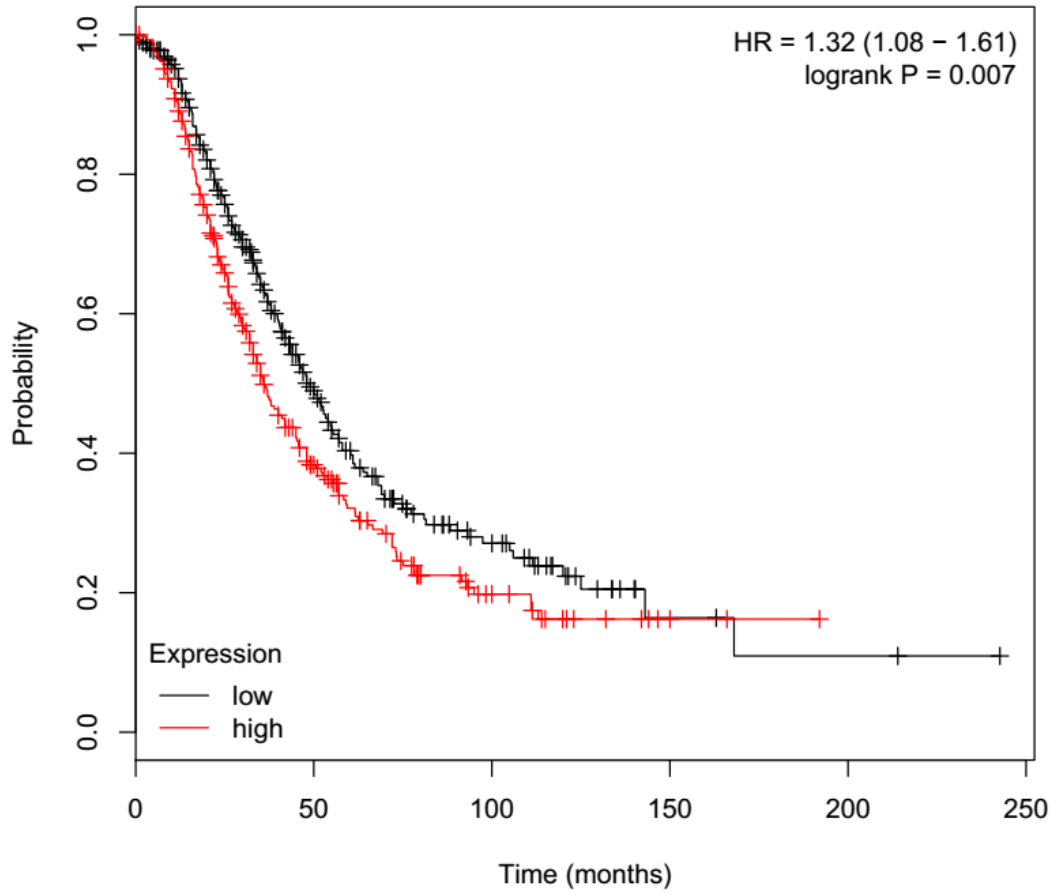
44. PRELP

228224_at



45. RDH10

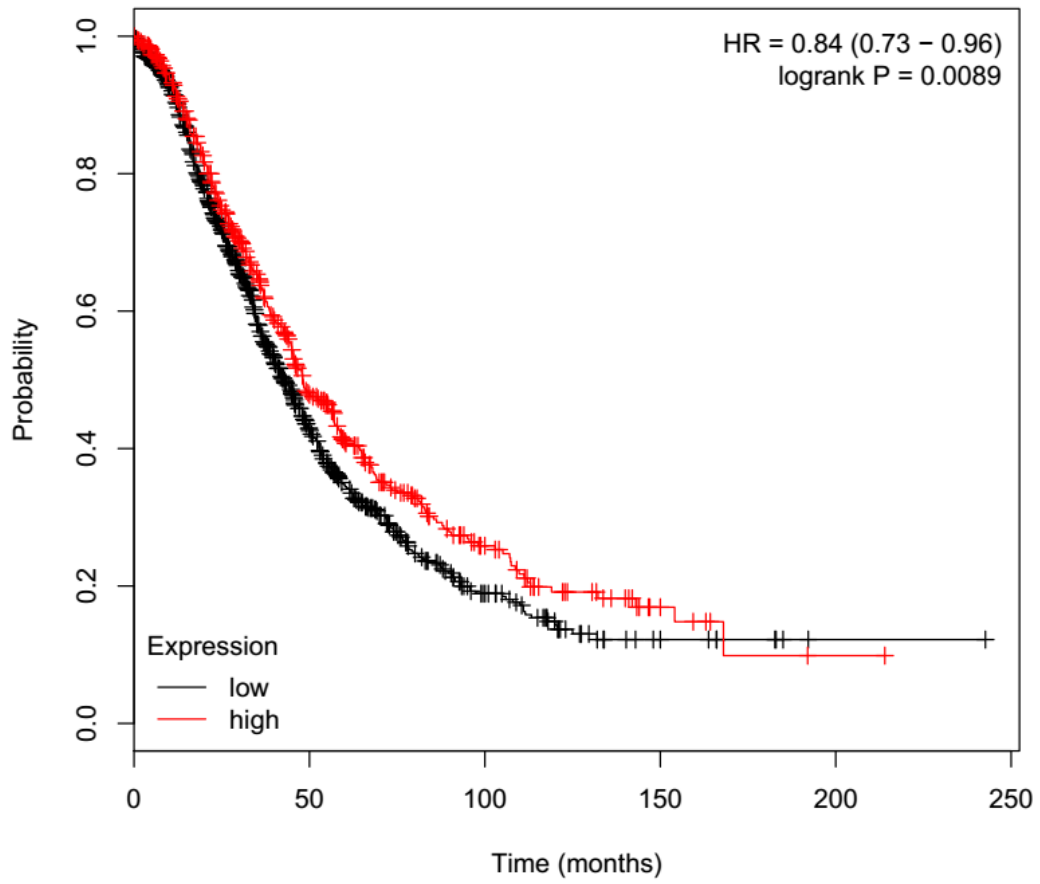
227467_at



		Number at risk					
		0	50	100	150	200	250
low	366	91	29	4	2	0	
high	289	75	19	4	0	0	

46. RPS3

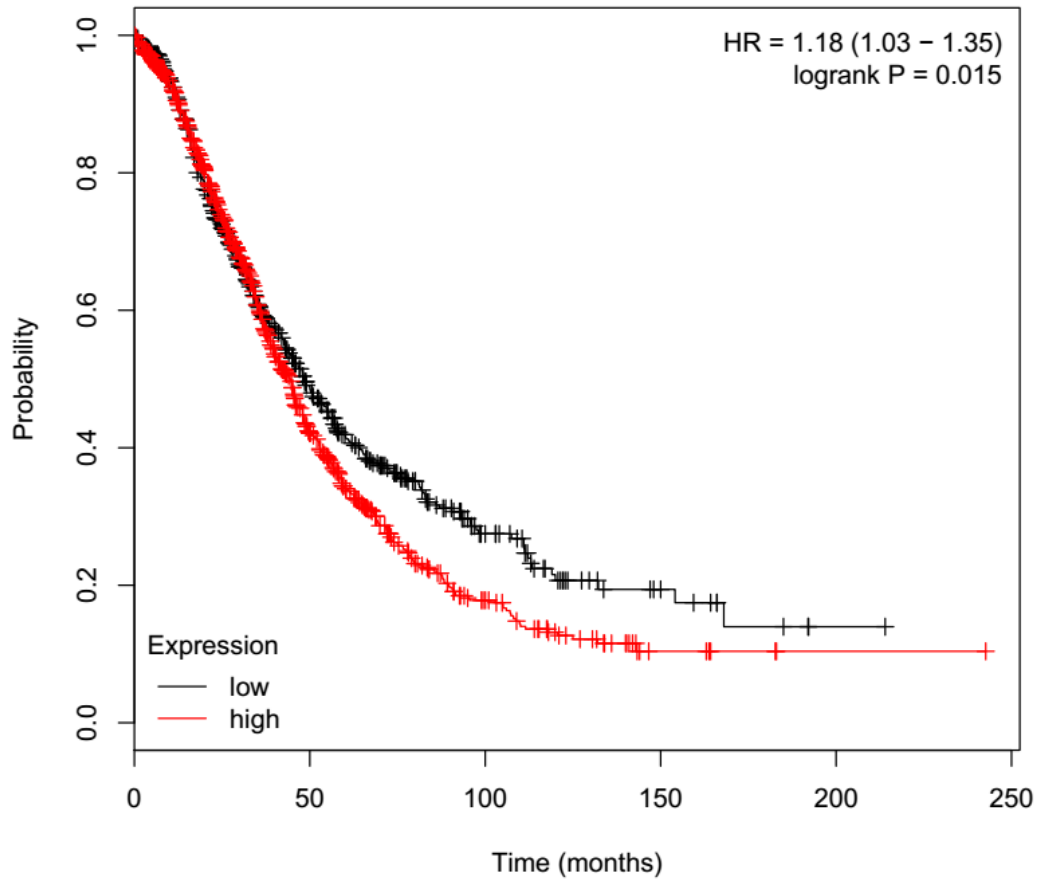
208692_at



	Number at risk					
	0	50	100	150	200	250
low	1051	257	50	9	1	0
high	605	171	47	9	1	0

47. RRAS

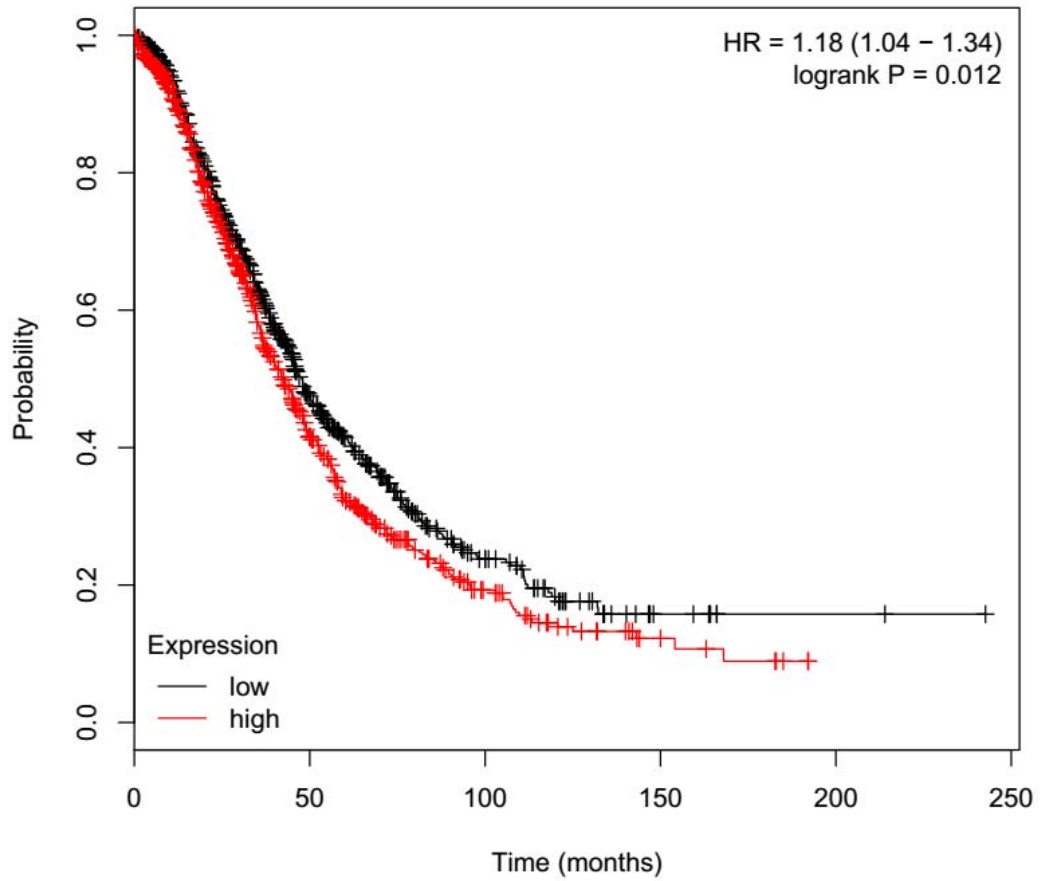
212647_at



		Number at risk				
low	647	180	46	12	1	0
high	1009	248	51	6	1	0

48. RRAS2

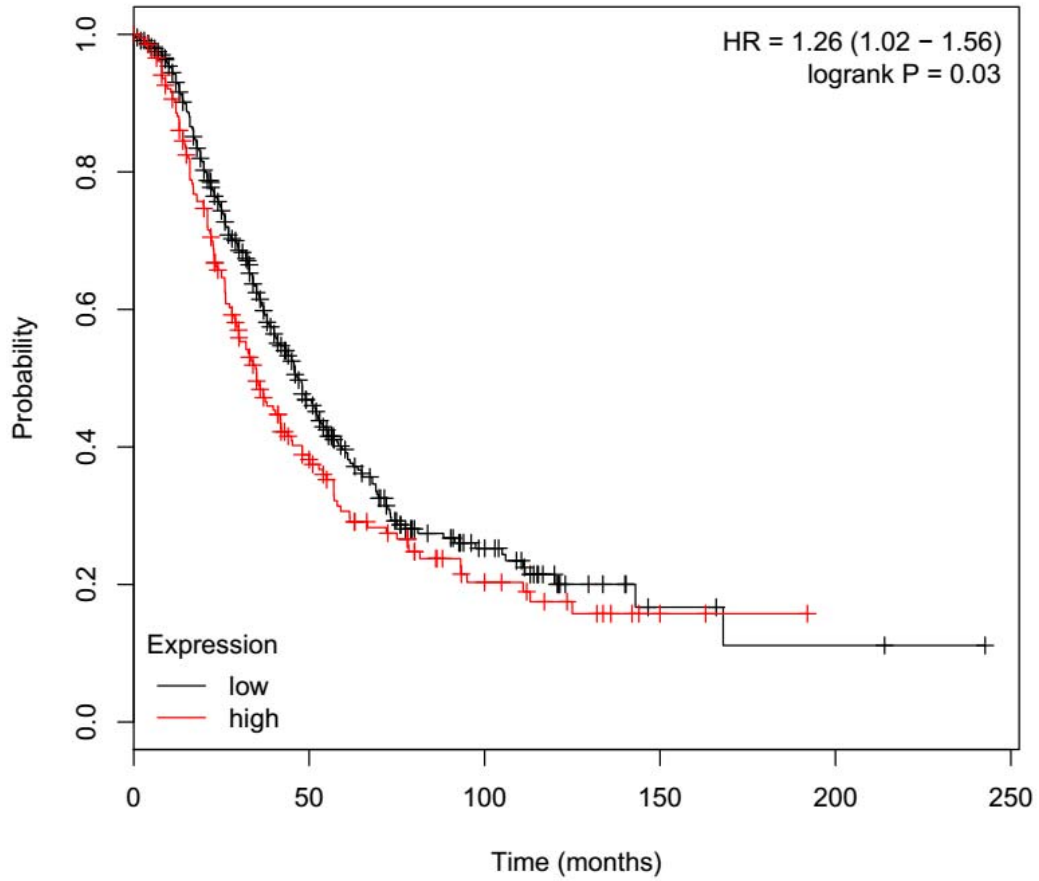
212589_at



		Number at risk				
	0	50	100	150	200	250
low	868	228	52	8	2	0
high	788	200	45	10	0	0

49. SRPRB

227737_at



	Number at risk					
	0	50	100	150	200	250
low	449	110	31	4	2	0
high	206	56	17	4	0	0

50. TXNDC12

223017_at

