

Supplementary Materials

Cytotoxic, Anti-Migration and Anti-Invasion Activities on Breast Cancer Cells of Angucycline Glycosides Isolated from a Marine-Derived *Streptomyces* sp.

Xin-Ying Qu^{1,‡}, Jin-Wei Ren^{2,‡}, Ai-Hong Peng^{1,2,‡}, Shi-Qi Lin¹, Dan-Dan Lu^{1,2}, Qian-Qian Du^{1,2}, Ling Liu², Xia Li¹, Er-Wei Li^{2,*} and Wei-Dong Xie^{1,*}

¹ College of Marine Science, Shandong University at Weihai, Weihai 264209, China; quxinying321@163.com (X-Y.Q.); pengahsdu@163.com (A-H.P.); lsqsd@outlook.com (S-Q.L.); 18304019094@163.com (D-D.L.); 15536791677@163.com (Q-Q.D.); xiali@sdu.edu.cn (X.L.)

² State Key Laboratory of Mycology, Institute of Microbiology, Chinese Academy of Sciences, Beijing 100101, China; renjw@im.ac.cn (J-W.R.); liul@im.ac.cn (L.L.)

[‡] These authors contributed equally to this paper.

^{*} Correspondence: liew@im.ac.cn (E-W.L.); wdxie@sdu.edu.cn (W-D.X.); Tel.: +86-10-6480-6141 (E-W.L.); +86-631-568-8303 (W-D.X.)

Keywords: *Streptomyces*; angucycline; saquayamycin; vineomycin; cytotoxicity; migration; breast cancer cell; MDA-MB-231

Contents

Figure S1. (A) Colony morphology of *Streptomyces* sp. OC1610.4. (B) 16S rRNA gene sequence of *Streptomyces* sp. OC1610.4 (GenBank number: MK045847). (C) Neighbor-joining phylogenetic tree based on 16S rRNA gene sequences of *Streptomyces* sp. OC1610.4.

Figure S2. HR-ESI-MS of **1**.

Figure S3. ^1H -NMR spectrum (500 MHz, CD_3OD) of **1**.

Figure S4. ^{13}C -NMR spectrum (125 MHz, CD_3OD) of **1**.

Figure S5. HMQC spectrum (500 MHz, CD_3OD) of **1**.

Figure S6. HMBC spectrum (500 MHz, CD_3OD) of **1**.

Figure S7. ^1H - ^1H COSY spectrum (500 MHz, CD_3OD) of **1**.

Figure S8. NOESY spectrum (500 MHz, CD_3OD) of **1**.

Figure S9. HR-ESI-MS of **2**.

Figure S10. ^1H -NMR spectrum (500 MHz, acetone- d_6) of **2**.

Figure S11. ^{13}C -NMR spectrum (125 MHz, acetone- d_6) of **2**.

Figure S12. HMQC spectrum (500 MHz, acetone- d_6) of **2**.

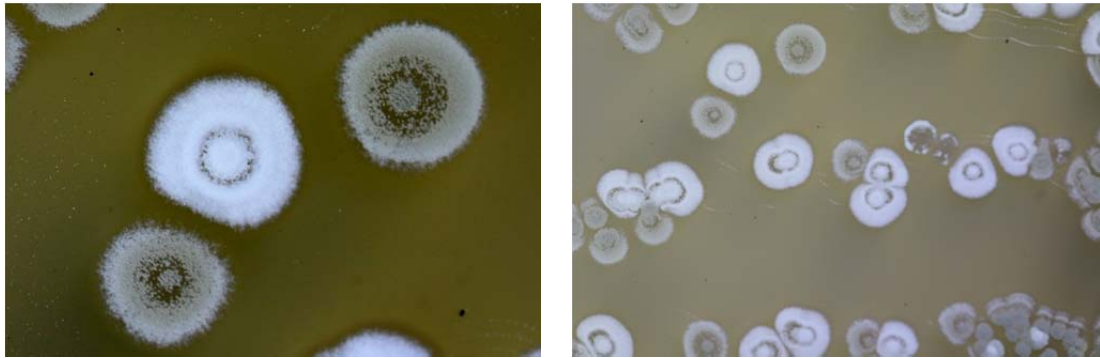
Figure S13. HMBC spectrum (500 MHz, acetone- d_6) of **2**.

Figure S14. ^1H - ^1H COSY spectrum (500 MHz, acetone- d_6) of **2**.

Figure S15. NOESY spectrum (500 MHz, acetone- d_6) of **2**.

Figure S1. (A) Colony morphology of *Streptomyces* sp. OC1610.4. (B) 16S rRNA gene sequence of *Streptomyces* sp. OC1610.4 (GenBank number: MK045847). (C) Neighbor-joining phylogenetic tree based on 16S rRNA gene sequences of *Streptomyces* sp. OC1610.4.

A.



B.

```

GTGCAGTCGGGTCTTACCATGCAGTCGACGATGAAGCCCTTCGGGGTGGATTAGTGG
CGAACGGGTGAGTAACACGTGGGCAATCTGCCCTGCACTCTGGGACAAGCCCTGGAA
ACGGGGTCTAATACCGGATACGAGCCTCCCGGGCATCTGGGAGGTTGGAAAGCTCCG
GCGGTGCAGGATGAGCCCGCGGCCTATCAGCTTGTTGGTGAGGTAACGGCTCACCAA
GGCGACGACGGGTAGCCGGCCTGAGAGGGCGACCGGCCACACTGGGACTGAGACAC
GGCCCAGACTCCTACGGGAGGCAGCAGTGGGGAATATTGCACAATGGGCGAAAGCCT
GATGCAGCGACGCCGCGTGAGGGATGACGGCCTTCGGGTTGTAAACCTCTTTCAGCA
GGGAAGAAGCGAAAGTGACGGTACCTGCAGAAGAAGCGCCGGCTAACTACGTGCCA
GCAGCCGCGGTAATACGTAGGGCGCAAGCGTTGTCCGGAATTATTGGGCGTAAAGAG
CTCGTAGGCGGCTTGTCGCGTCGATTGTGAAAGCCCGGGGCTTAACTCCGGGTCTGCA
GTCGATACGGGCAGGCTAGAGTGTGGTAGGGGAGATCGGAATCCTGGTGTAGCGGT
GAAATGCGCAGATATCAGGAGGAACACCGGTGGCGAAGGCGGATCTCTGGGCCATTA
CTGACGCTGAGGAGCGAAAGCGTGGGGAGCGAACAGGATTAGATACCCTGGTAGTCC
ACGCCGTAAACGGTGGGCACTATGTGTTGGCGACATTCCACGTCGTCGGTGCCGCAG
CTAACGCATTAAGAGCCCCGCCTGGGGGAGTACGGCCGCAACGCTGATACTCAAAG
AATTGATGGGGGCGCGCACAAGCAGCGGAGCATGTGGCTTATTTGACGCAACGCGC
AGAACTTACCGAGGCTTGACATACACCAGTAACATCCAGACATGAGTGCCCCCTCC
TGGTCGGGGTACAGTAGTGCATGGGCTTGTCGTCAACTCAGTCGTGACATGTTGAGG
AGAAACCCCCCAGCACATCAGA
    
```

C.

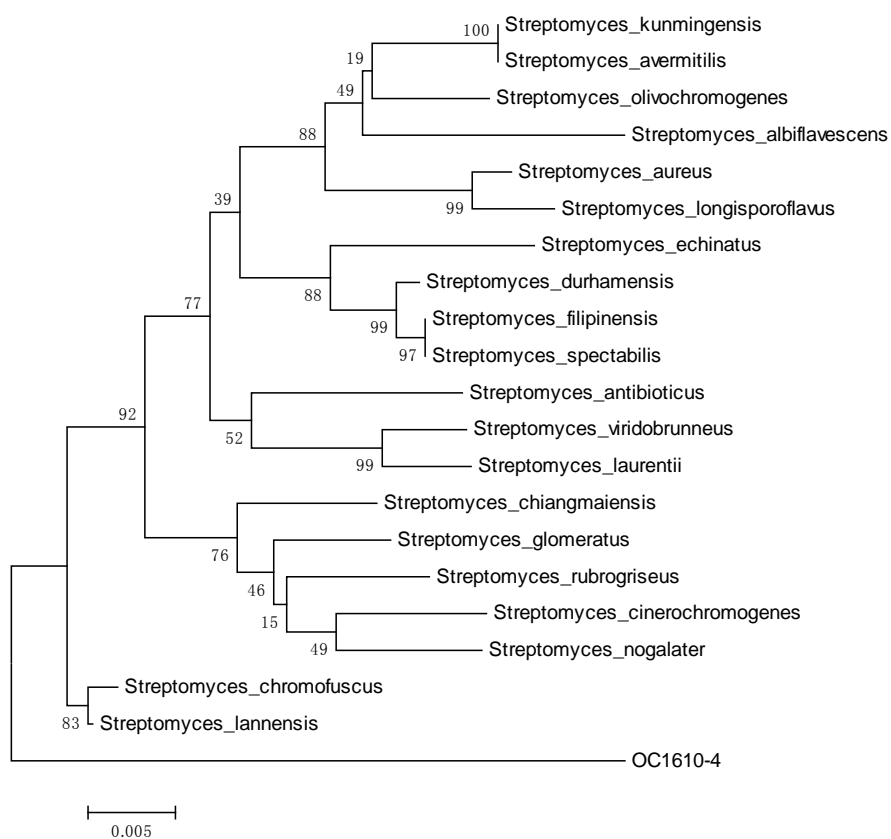


Figure S2. HR-ESI-MS of 1.

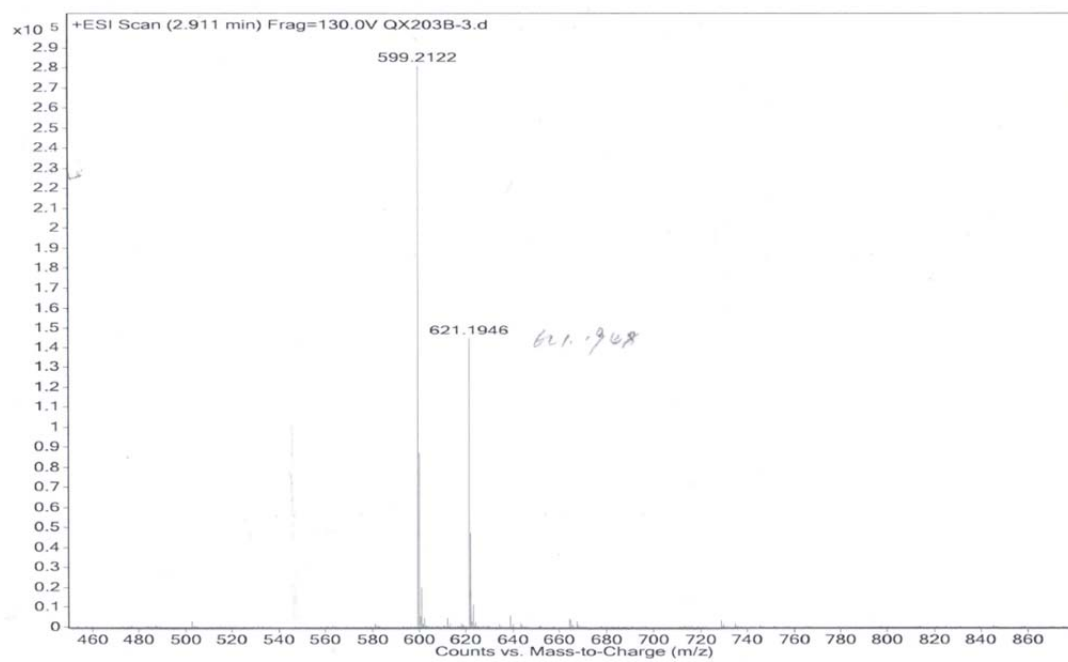


Figure S3. $^1\text{H-NMR}$ spectrum (500 MHz, CD_3OD) of **1**.

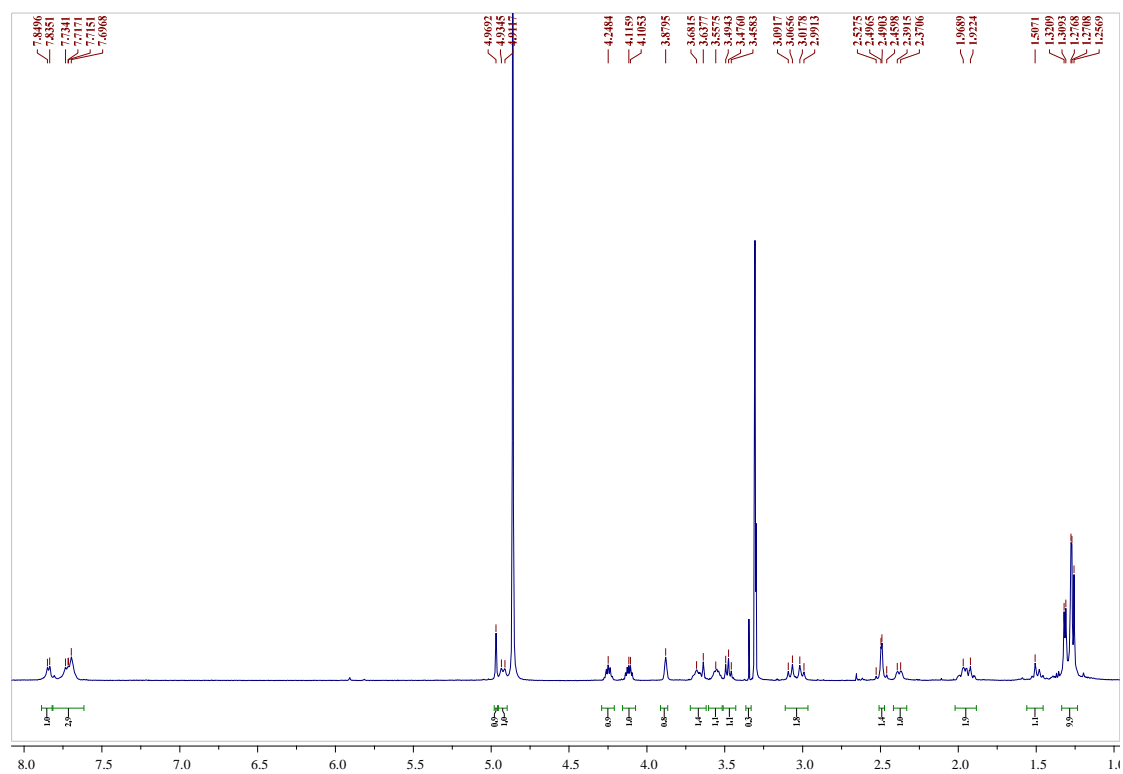


Figure S4. $^{13}\text{C-NMR}$ spectrum (125 MHz, CD_3OD) of **1**.

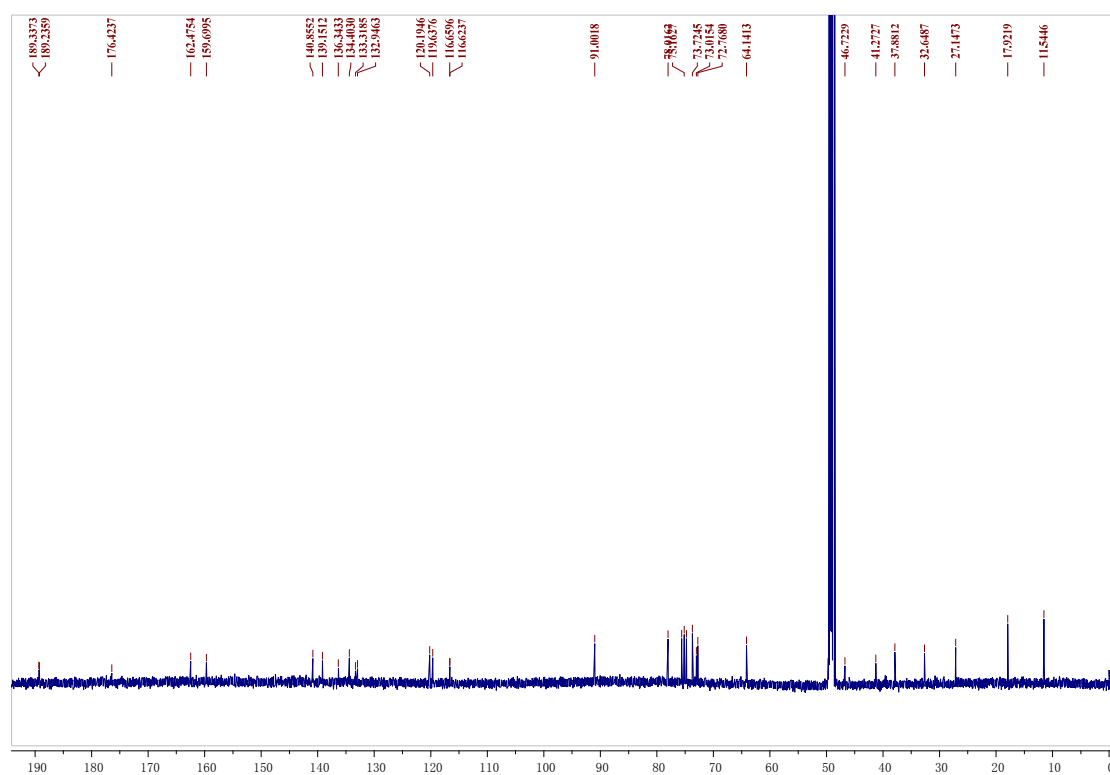


Figure S5. HMQC spectrum (500 MHz, CD₃OD) of **1**.

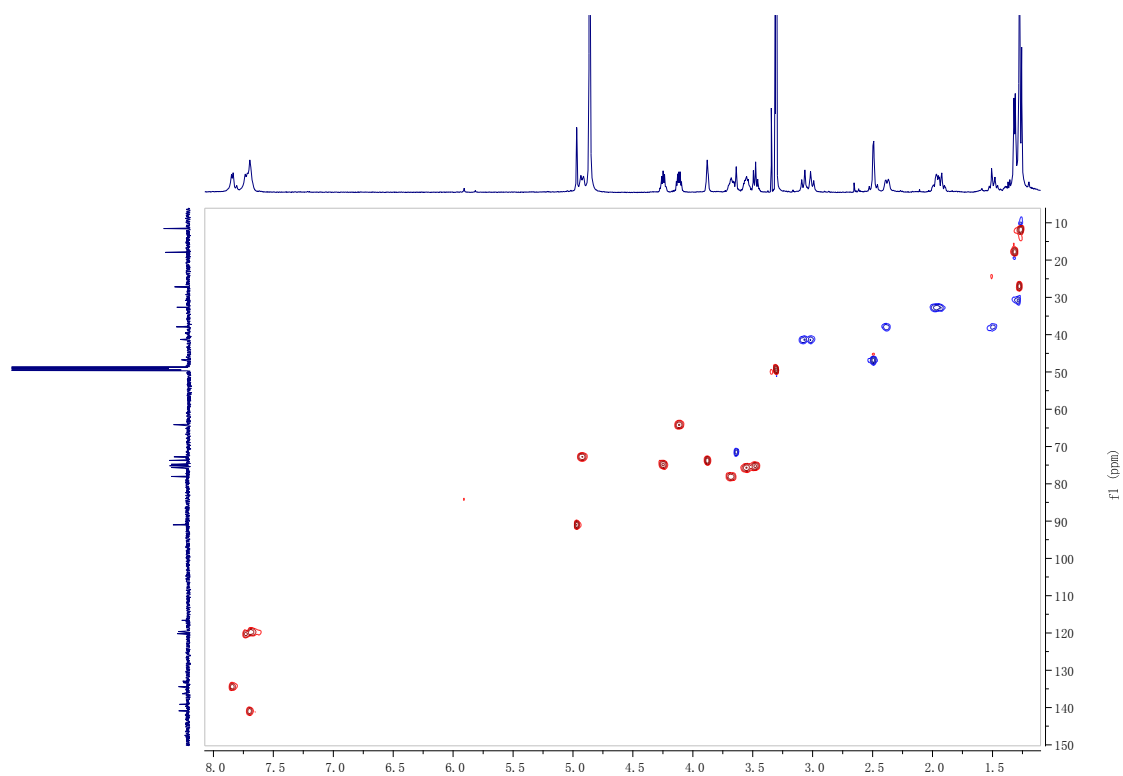


Figure S6. HMBC spectrum (500 MHz, CD₃OD) of **1**.

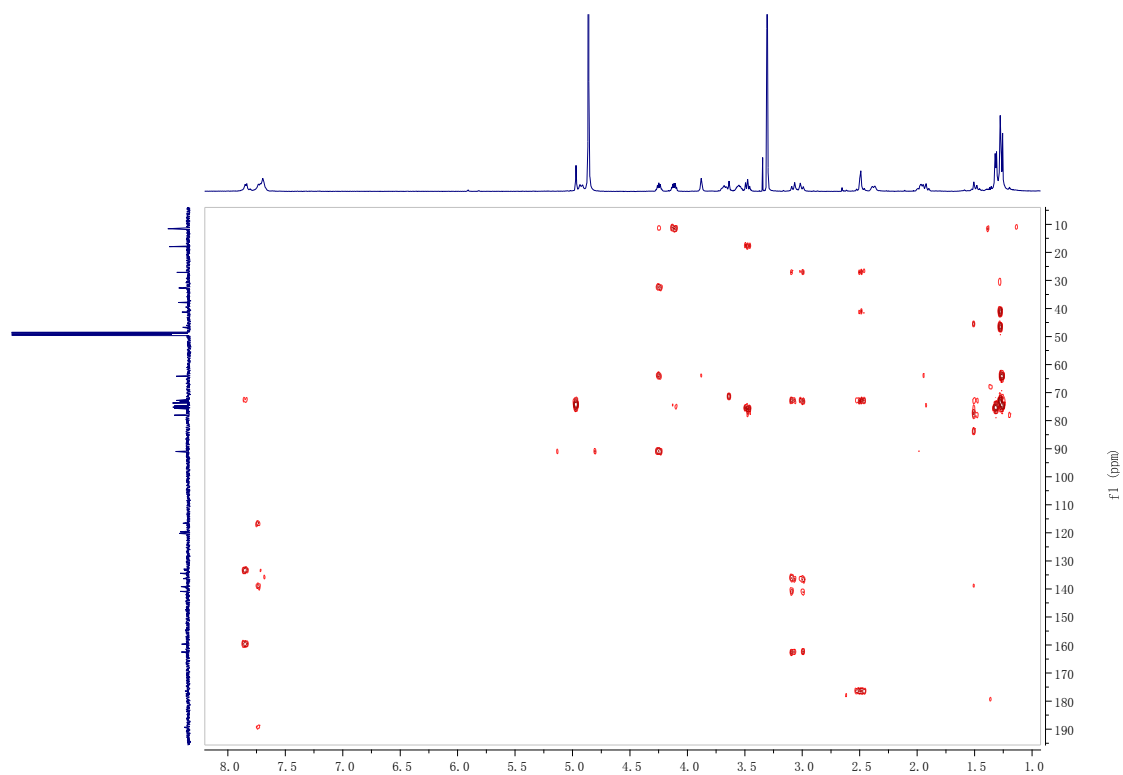


Figure S7. ^1H - ^1H COSY spectrum (500 MHz, CD_3OD) of **1**.

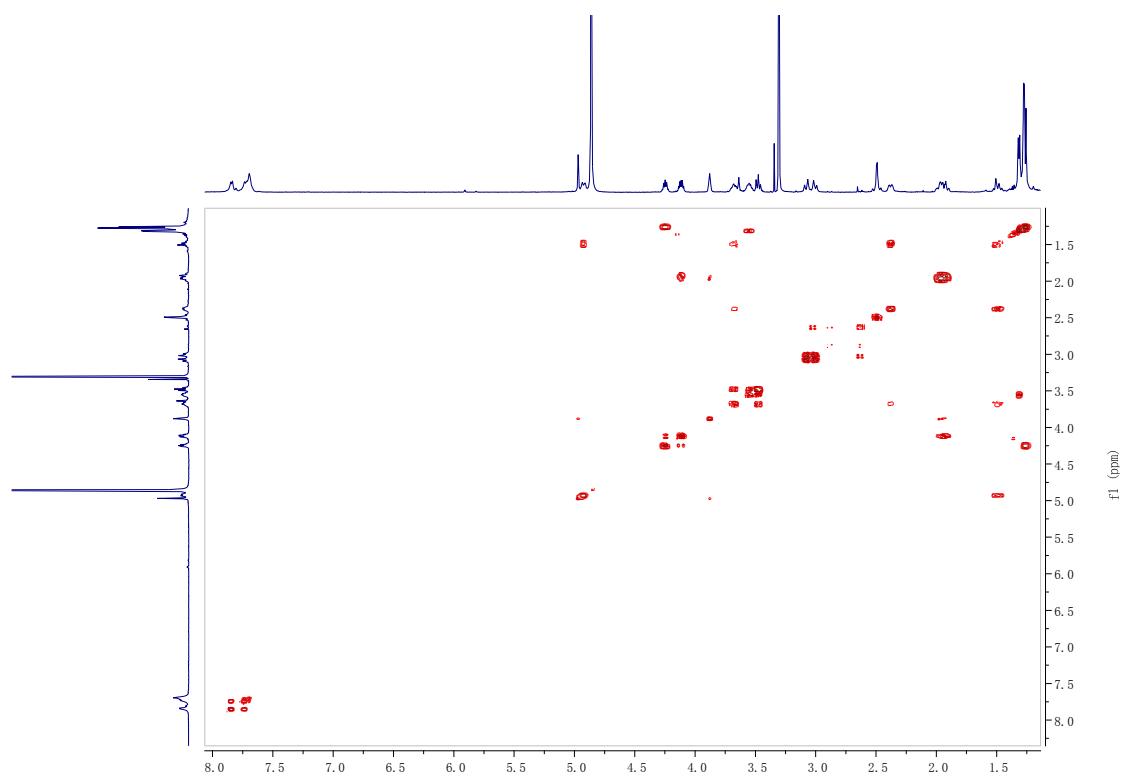


Figure S8. NOESY spectrum (500 MHz, CD_3OD) of **1**.

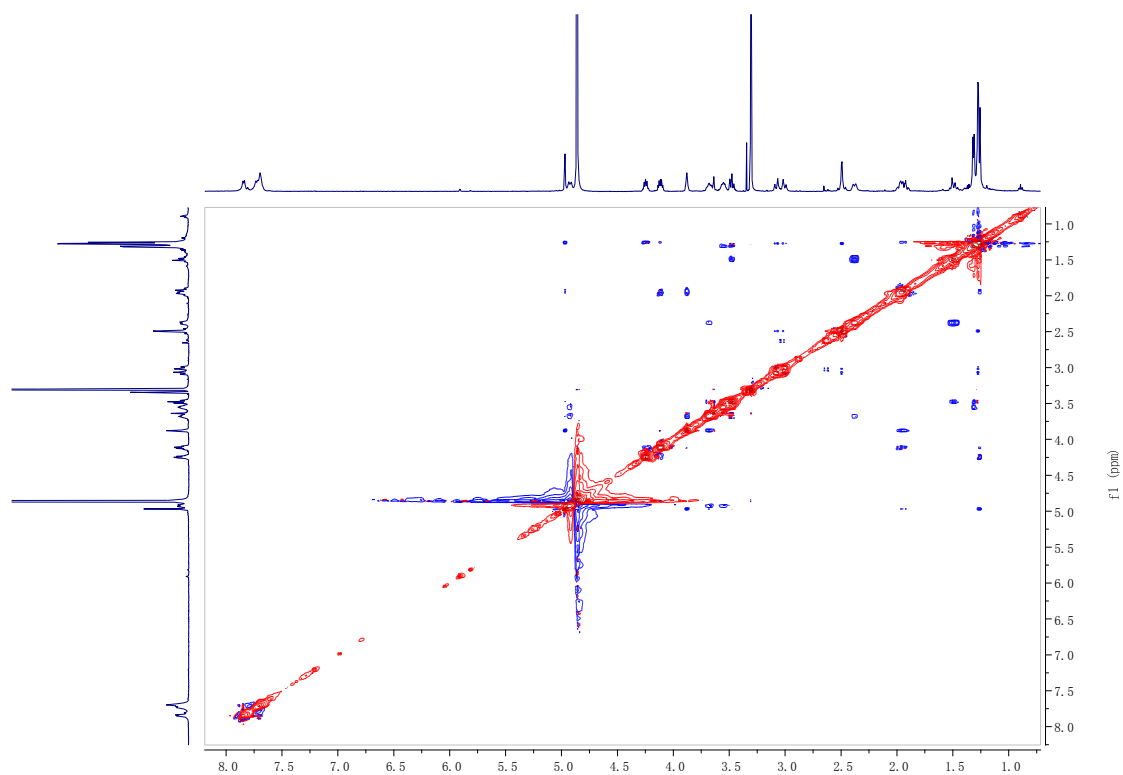


Figure S11. ^{13}C -NMR spectrum (125 MHz, acetone- d_6) of **2**.

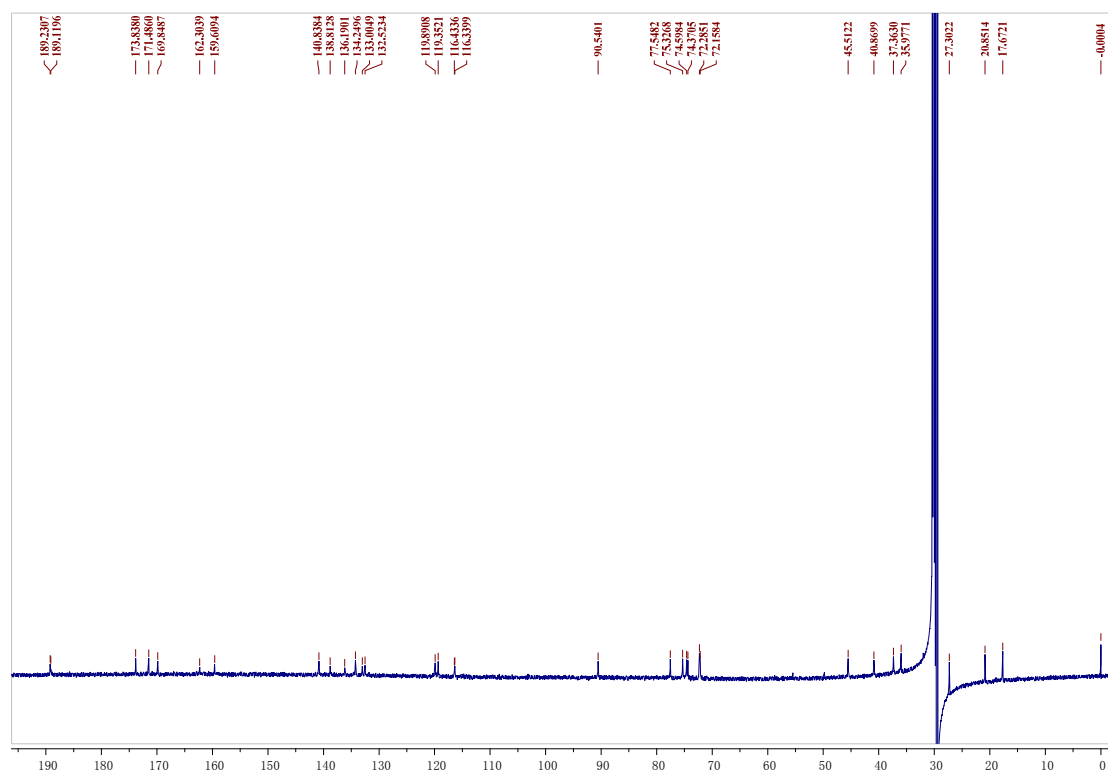


Figure S12. HMQC spectrum (500 MHz, acetone- d_6) of **2**.

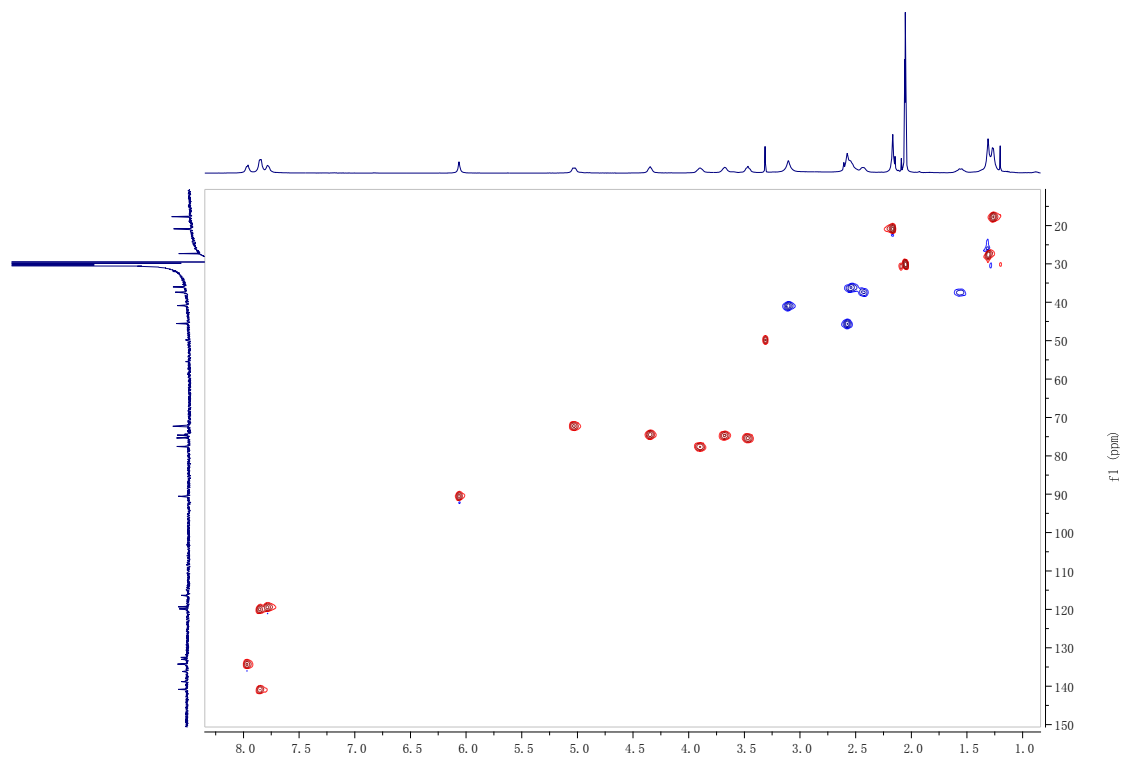


Figure S13. HMBC spectrum (500 MHz, acetone-d₆) of **2**.

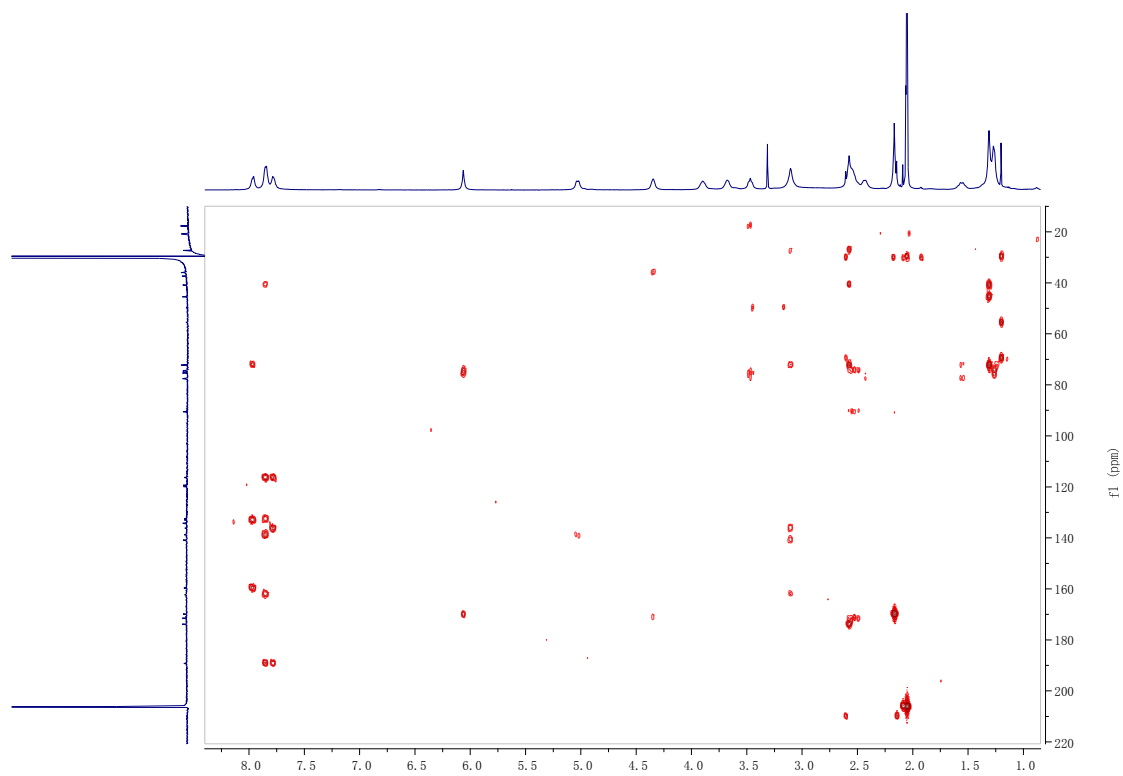


Figure S14. ¹H-¹H COSY spectrum (500 MHz, acetone-d₆) of **2**.

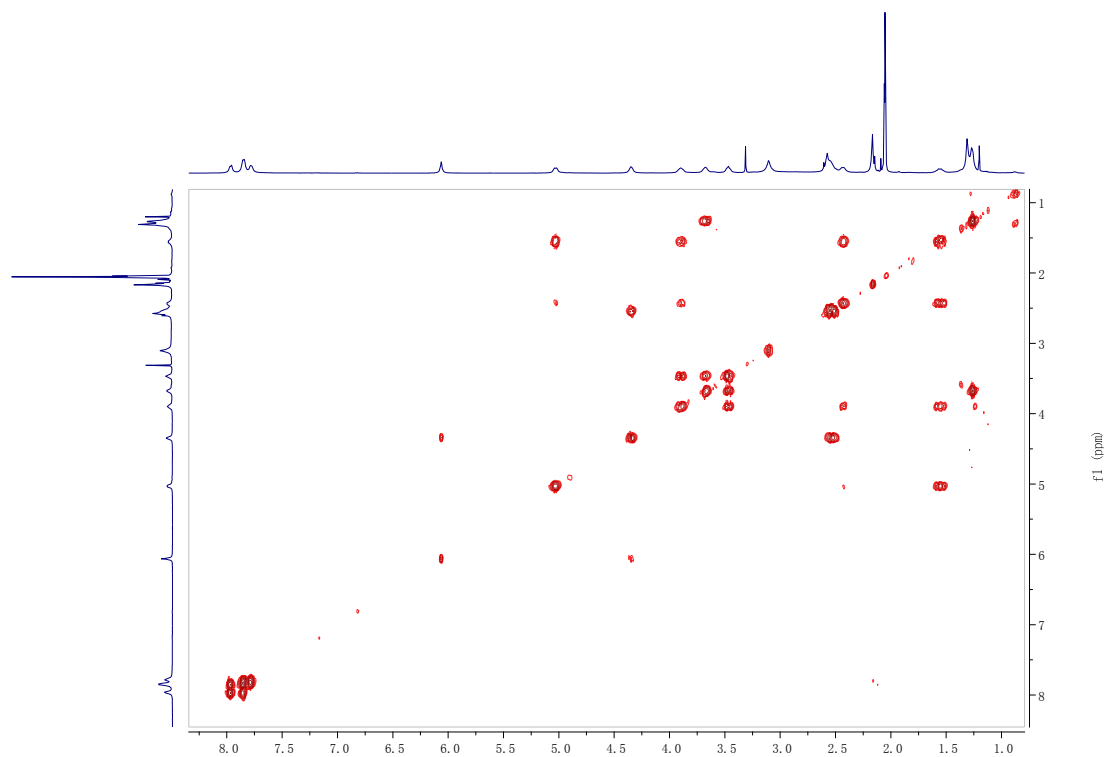


Figure S15. NOESY spectrum (500 MHz, acetone- d_6) of **2**.

