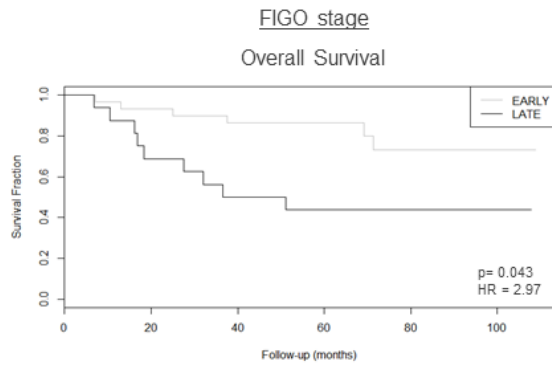


1A



1B

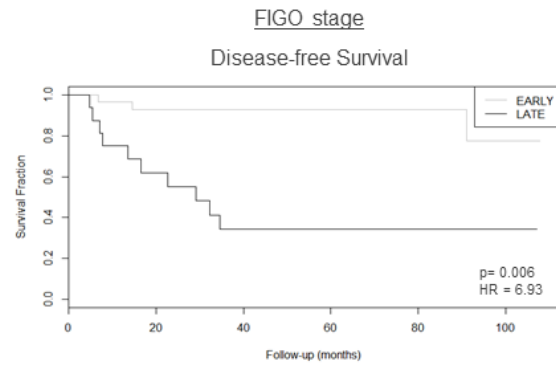


Figure S1. The Kaplan–Meier method was used to evaluate overall survival (1A) and disease-free survival (1B), based on a confidence interval of 95%. Data with $p < 0.05$ were considered statistically significant. Survival data of patients were plotted according to tumor stage: IA, IB and II were considered early stages; III and IV were considered late stages. Data were adjusted by stage and *HMG1* expression in overall survival analysis and by stage, age and histological grade in disease-free survival analysis.

Table S1. Sequences of the five pairs of oligonucleotides sequences used in the study.

<u>Oligonucleotides sequences</u>
<u>GAPDH</u> Forward: 5' CAACAGCCTCAAGATCATCAGCAA 3' Reverse: 5' AGTGATGGCATGGACTGTGGTCAT 3'
<u>HMGA1</u> Forward: 5' AAAAGGACGGCACTGAGAAG 3' Reverse: 5' CTCTAGGTGTTGGCACTTCG 3'
<u>HMGA2</u> Forward: 5' GCGCCTCAGAAGAGAGGAC 3' Reverse: 5' GGTCTCTTAGGAGAGGGCTCA 3'
<u>HMGA1P6</u> Forward: 5'GCAGACCCACAAAAGTGA 3' Reverse: 5' GAGCAAAGCTGTCCCATCC
<u>HMGA1P7</u> Forward: 5' GCTCCTTCTCGGCTCCTC 3' Reverse: 5' GCTTGGGCCTCTTTTATGG 3'

Table S2: Correlations between *HMGAI* gene expression and baseline characteristics of patients.

Characteristics	≤ 0.089726*	>0.089726*	p value
Hypertension			
Yes	14 (48.3%)	15 (51.7%)	1.0000
No	9 (52.9%)	8 (47.1%)	
Diabetes			
Yes	6 (66.7%)	3 (33.3%)	0.4591
No	17 (45.9%)	20 (54.1%)	
Heart diseases			
Yes	1 (25.0%)	3 (75.0%)	0.6076
No	22 (52.4%)	20 (47.6%)	
Obesity or Overweight			
Yes	18 (51.4%)	17 (48.6%)	1.0000
No	5 (45.5%)	6 (54.5%)	
Nulliparity			
Yes	4 (66.7%)	2 (33.3%)	0.6628
No	17 (47.2%)	19 (52.8%)	
Contraceptive use			
Yes	6 (54.5%)	5 (45.5%)	1.0000
No	16 (50.0%)	16 (50.0%)	
Histological Grade			
G1	6 (54.5%)	5(45.5%)	
G2	13 (59.1%)	9 (40.9%)	0.2539
G3	4 (30.8%)	9 (69.2%)	
Recurrence			
Yes	6 (46.2%)	7 (53.8%)	1.0000
No	17 (51.5%)	16 (48.5%)	
Myometrial Invasion			
≥ 50%	8 (33.3%)	16 (66.7%)	0.0377
< 50%	15 (68.2%)	7 (31.8%)	
Lymphovascular Infiltration			
Yes	3 (42.9%)	4 (57.2%)	0.6843
No	16(55.2%)	13(44.8%)	

Fisher's exact test

* Patients were divided in two groups, according to *HMGAI* mRNA median expression levels (0.089726).

Table S3: HMGA1 protein expression by immunohistochemistry in 26 endometrioid endometrial carcinomas

(EEC) samples.

Histological Type	<u>HMGA1 Staining Score (n)</u>				
	0	1+	2+	3+	4+
EEC Stage IA (n=5)	0	3	1	1	0
EEC Stage IB (n=5)	0	0	1	3	1
EEC Stage II (n=5)	0	0	2	3	0
EEC Stage III (n=5)	0	0	1	2	2
EEC Stage IV (n=6)	0	0	1	1	4

Table S4: Correlations between *HMGA2* gene expression and baseline characteristics of patients.

Characteristics	≤ 0.008599*	>0.008599*	p value
Hypertension			
Yes	16 (55.2%)	13 (44.8%)	0.5422
No	7 (41.2%)	10 (58.8%)	
Diabetes			
Yes	5 (55.6%)	4 (44.4%)	1.0000
No	18 (48.6%)	19 (51.4%)	
Heart diseases			
Yes	3 (75%)	1 (25%)	0.6078
No	20 (47.6%)	22 (52.4%)	
Obesity or Overweight			
Yes	18 (51.4%)	17 (48.6%)	0.4966
No	4 (36.4%)	7 (63.6%)	
Nulliparity			
Yes	4 (66.7%)	2 (33.3%)	0.1249
No	18 (50%)	18 (50%)	
Contraceptive use			
Yes	4 (36.4%)	7 (63.6%)	0.3102
No	18 (56.3%)	14 (43.7%)	
Histological grade			
G1	5 (45.5%)	6 (54.5%)	0.4699
G2	13 (59.1%)	9 (40.9%)	
G3	5 (38.5%)	8 (61.5%)	
Recurrence			
Yes	5 (38.5%)	8 (61.5%)	0.3141
No	19 (55.9%)	15 (44.1%)	
Myometrial Invasion			
≥ 50%	14 (58.3%)	10 (41.7%)	0.3762
< 50%	9 (40.9%)	13 (59.1%)	
Lymphovascular Infiltration			
Yes	3 (42.9%)	4 (57.1%)	0.4178
No	18 (62.1%)	11 (37.9%)	

Fisher's exact test

* Patients were divided in two groups, according to *HMGA2* mRNA median expression levels (0.008599).

Table S5: HMGA2 protein expression by immunohistochemistry in 26 endometrioid endometrial carcinomas (EEC) samples.

Histological Type	<u>HMGA2 Staining Score (n)</u>				
	0	1+	2+	3+	4+
EEC Stage IA (n=5)	0	3	1	1	0
EEC Stage IB (n=5)	0	0	1	2	2
EEC Stage II (n=5)	0	0	2	3	0
EEC Stage III (n=5)	0	0	1	3	1
EEC Stage IV (n=6)	0	0	1	3	2