

Supplementary material

CD8⁺PD-1⁺T cells and PD-L-1⁺ CTCs in chemotherapy-naïve NSCLC: Towards their clinical relevance?

Athanasios Kotsakis^{1,2,3}, Galatea Kallergi⁴, Despoina Aggouraki^{3,4}, Zaharoula Lyrusti⁴, Eleni Lagoudaki^{3,5}, Anastasios Koutsopoulos^{3,5}, Vassilis Georgoulas⁴, Eleni-Kyriaki Vetsika^{1,3,4*}

¹School of Medical Sciences, University of Thessaly, GR-41334, Larissa, Thessaly, Greece

²Department of Medical Oncology, University General Hospital of Larissa, GR-41334, Thessaly, Greece

³Hellenic Society of Immuno-Oncology, 55 Lombardou St, GR-11474, Athens, Greece

⁴Department of Translational Oncology, University of Crete, Medical School, GR-71110, Heraklion, Crete, Greece

⁵Department of Pathology, University General Hospital of Heraklion, GR-71110, Heraklion, Crete, Greece

Supplementary Table 1. Phenotypes and percentages of effector immune cells subpopulations in NSCLC patients according to histology

Cell types	Phenotype	% Mean value \pm SEM		
		Non-SQ	SQ	P value
CD4⁺ T	CD3 ⁺ CD4 ⁺	47.01 \pm 2.92	52.32 \pm 4.02	0.28
	CD3 ⁺ CD4 ⁺ PD-1 ⁺	39.29 \pm 2.69	42.30 \pm 3.64	0.50
	CD3⁺CD4⁺PD-L1⁺	1.96 \pm 0.17	2.564 \pm 0.26	0.02
CD8⁺ T	CD3 ⁺ CD8 ⁺	27.86 \pm 2.1	24.79 \pm 3.47	0.42
	CD3 ⁺ CD8 ⁺ PD-1 ⁺	17.17 \pm 1.8	16.04 \pm 2.9	0.73
	CD3 ⁺ CD8 ⁺ PD-L1 ⁺	0.87 \pm 0.11	0.60 \pm 0.13	0.09
B cells	CD3 ⁻ CD19 ⁺	22.47 \pm 3.19	31.36 \pm 6,24	0.1693
	CD3 ⁻ CD19 ⁺ PD-1 ⁺	1,11 \pm 0,26	0.8846 \pm 0,25	0.6425
	CD3 ⁻ CD19 ⁺ PD-L1 ⁺	0,28 \pm 0,12	0,21 \pm 0,06	0.5769
DC/ monocytes	CD14 ⁺ HLA-DR ⁺ CD3 ⁻ CD56 ⁻ CD19 ⁻	83.54 \pm 3.47	88.01 \pm 3.19	0.11
	CD14 ⁺ HLA-DR ⁺ CD3 ⁻ CD56 ⁻ CD19 ⁻ PD-1 ⁺	19.96 \pm 2.22	15.40 \pm 2.98	0.12
	CD14 ⁺ HLA-DR ⁺ CD3 ⁻ CD56 ⁻ CD19 ⁻ PD-L1 ⁺	0.87 \pm 0.19	0.78 \pm 0.23	0.85

Supplementary Table 2a. Incidence of PD-L1⁺CTCs among PD-L1⁺ or PD-L1⁻ tumors in NSCLC patients.

	No of patients (%)	
	PD-L1 ⁺ tumors	PD-L1 ⁻ tumors
PD-L1 ⁺ CTCs	1 (10)	2 (20)
PD-L1 ⁻ CTCs	2 (20)	5 (50)

Supplementary Table 2b. PD-L1⁺ CTCs and PD-L1⁺ tumors in NSCLC patients.

Patients	PD-L1⁺ CTCs	PD-L1⁺ tumors
1	0	ND
2	1	0
3	0	ND
4	0	ND
5	8	ND
6	0	ND
7	1	0
8	0	ND
9	0	0
10	1	ND
11	1	ND
12	0	0
13	0	0
14	0	10
15	0	0
16	0	ND
17	0	ND
18	0	ND
19	0	ND
20	0	ND
21	0	ND
22	0	ND
23	0	ND
24	0	ND
25	0	ND
26	1	ND
27	1	ND
28	0	ND
29	0	ND
30	0	ND

ND: non-determined

Supplementary Table 3. Association of Immune cells and clinical outcome of treatment-naive NSCLC patients. N= number of patients,

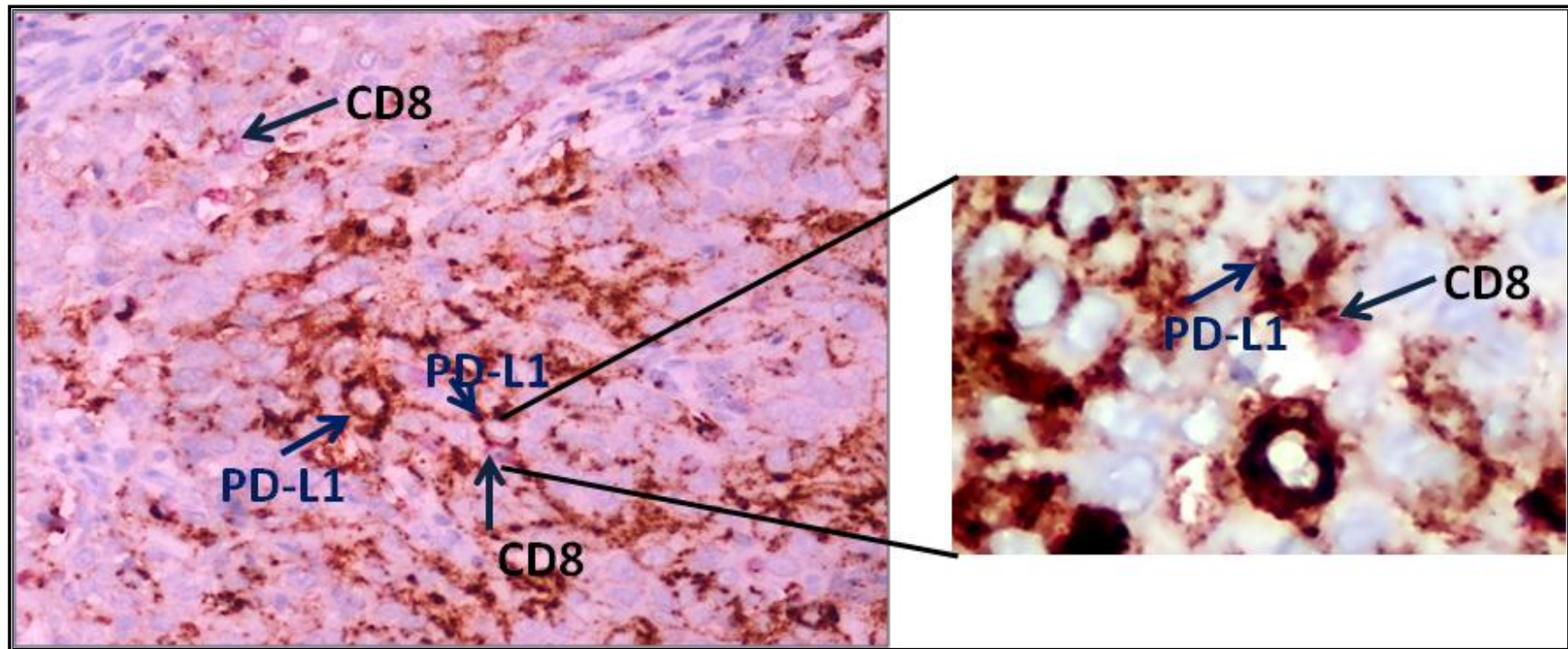
CI= confidence intervals, SQ=squamous, ND= not defined, DC=Dendritic cells

	PROGRESSION-FREE SURVIVAL				OVERALL SURVIVAL			
	n	Events	Months (95% CI)	p value	n	Events	Months (95% CI)	p value
<i>Clinical parameters</i>								
Age								
(≥ 68 vs <68)	18 vs 14	15 vs 12	3.7 (2.2-5.3) vs 4.3 (3.1-5.5)	0.59	18 vs 14	10 vs 3	6.9 (4.1-9.6) vs 9.2 (7.6-10.9)	0.04
Gender								
(Male vs Female)	31 vs 1	27 vs 0	ND	ND	31 vs 1	13 vs 0	ND	ND
Histology								
(Non-SQ vs SQ)	20 vs 12	17 vs 10	3.9 (2.5-5.2) vs 4.3 (2.7-5.9)	0.65	20 vs 12	9 vs 4	7.2 (5.4-8.9) vs 9.9 (6.7-13.2)	0.61
Stage								
(M1b vs non-M1b)	21 vs 11	17 vs 10	3.1 (2.3-3.9) vs 5.3 (3.4-7.3)	0.06	21 vs 11	9 vs 4	7.2 (5.2-9.1) vs 9.7 (6.4-13.1)	0.52
<i>Immunological parameters (< vs ≥ mean)</i>								
CD4 ⁺ T cells	13 vs 19	12 vs 15	3.6 (1.9-5.2) vs 4.3 (2.9-5.5)	0.57	13 vs 19	7 vs 6	6.5 (4.2-8.7) vs 9.7 (7.0-12.4)	0.38
PD-1 ⁺ CD4 ⁺ T cells	16 vs 16	15 vs 12	4.1 (2.6-5.6) vs 4.1 (2.6-5.6)	0.91	16 vs 16	8 vs 5	7.1 (5.0-9.2) vs 9.5 (6.4-12.5)	0.60
PD-L1 ⁺ CD4 ⁺ T cells	19 vs 13	17 vs 10	3.9 (2.6-5.4) vs 4.2 (2.5-5.9)	0.73	19 vs 13	10 vs 3	7.1 (5.1-8.9) vs 10.9 (7.9-13.9)	0.32
CD8 ⁺ T cells	15 vs 17	12 vs 15	4.8 (2.9-6.6) vs 3.3 (2.4-4.3)	0.16	15 vs 17	6 vs 7	9.2 (6.3-12.1) vs 7.1 (5.0-9.2)	0.89
PD-1⁺ CD8⁺ T cells	20 vs 12	17 vs 10	4.8 (3.5-6.1) vs 2.8 (1.5-4.1)	0.02	20 vs 12	7 vs 6	9.9 (7.5-12.3) vs 6.1 (3.6-8.5)	0.23
PD-L1 ⁺ CD8 ⁺ T cells	18 vs 14	16 vs 11	4.7 (3.3-6.0) vs 3.1 (1.8-4.3)	0.23	18 vs 14	6 vs 7	10.0 (7.4-12.6) vs 4.9 (3.6-6.2)	0.19
B cells	19 vs 13	18 vs 9	3.4 (2.2-4.7) vs 4.9 (3.3-6.5)	0.20	19 vs 13	9 vs 4	7.0 (5.0-9.0) vs 9.2 (5.8-12.6)	0.52
PD-1 ⁺ B cells	22 vs 10	20 vs 7	3.7 (2.5-4.8) vs 4.8 (2.8-6.8)	0.29	22 vs 10	9 vs 4	7.4 (5.6-9.4) vs 8.4 (4.7-12.2)	0.95
PD-L1 ⁺ B cells	25 vs 7	24 vs 3	3.9 (2.8-4.9) vs 4.6 (2.2-6.9)	0.37	25 vs 7	10 vs 3	9.4 (7.2-11.5) vs 4.6 (2.2-7.0)	0.29
DC/monocytes	11 vs 21	10 vs 17	3.3 (1.2-5.5) vs 4.4 (3.4-5.5)	0.05	11 vs 21	7 vs 6	5.3 (2.7-7.8) vs 10.4 (8.1-11.7)	0.04
PD-1 ⁺ DC/monocytes	17 vs 15	12 vs 15	3.8 (2.6-5.1) vs 4.1 (2.6-5.5)	0.98	17 vs 15	5 vs 8	8.2 (5.9-10.4) vs 8.6 (5.9-11.3)	0.68
PD-L1 ⁺ DC/monocytes	23 vs 9	21 vs 6	3.9 (2.7-5.1) vs 4.4 (2.1-6.7)	0.53	23 vs 9	9 vs 4	7.8 (5.9-9.6) vs 8.1 (4.1-12.0)	0.64

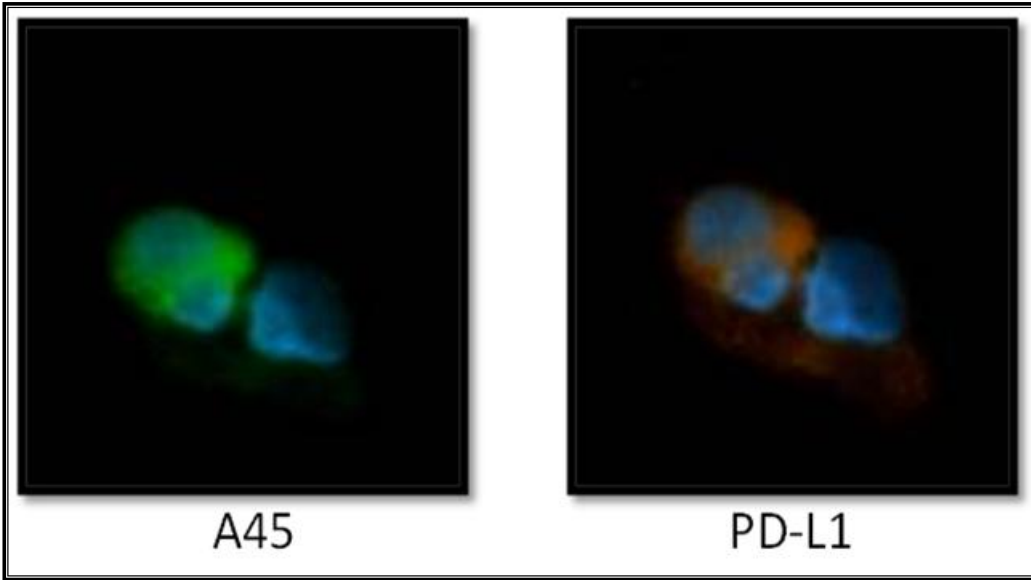
Supplementary Figures

Supplementary Figure 1. (A) Representative photomicrographs of immunohistochemical staining for PD-L1 and CD8⁺ TILs. Blue arrows indicate the positively PD-L1 stained cancer cells and black arrows the infiltrating CD8⁺ T cells. (b) Representative membrane spots from NSCLC patient stained for Cytokeratin (A45; green), PD-L1 (red) and DAPI.

A

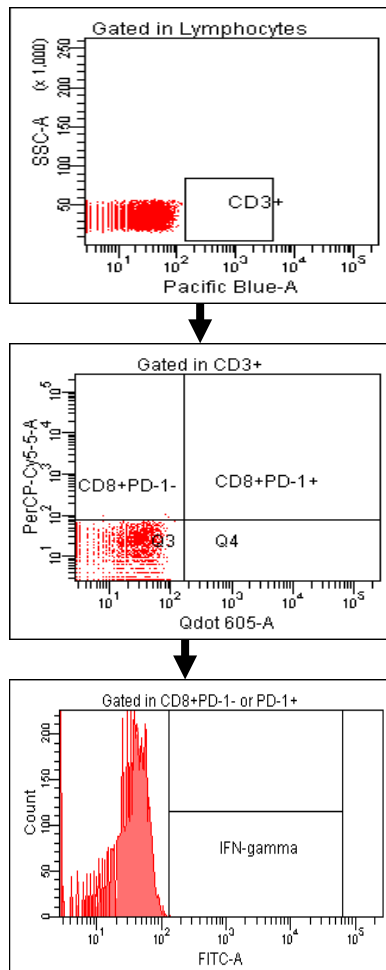


B

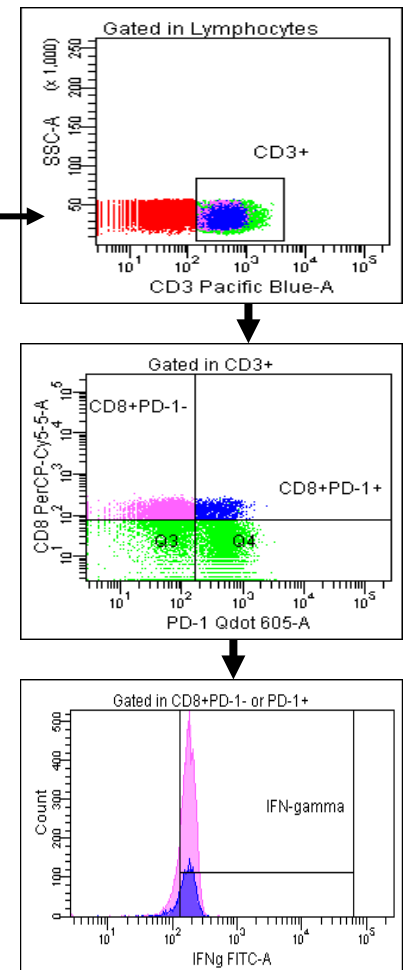


Supplementary Figure 2. The functionality of CD8⁺PD-1⁺ T cells in NSCLC patients. Representative dot plots of flow cytometric analysis of IFN- γ and PD-1 gated in CD8⁺ T cells. The gates for dot plots are presented on the top of each box. The positive expression of markers is compared to cells without antibody staining.

Negative control



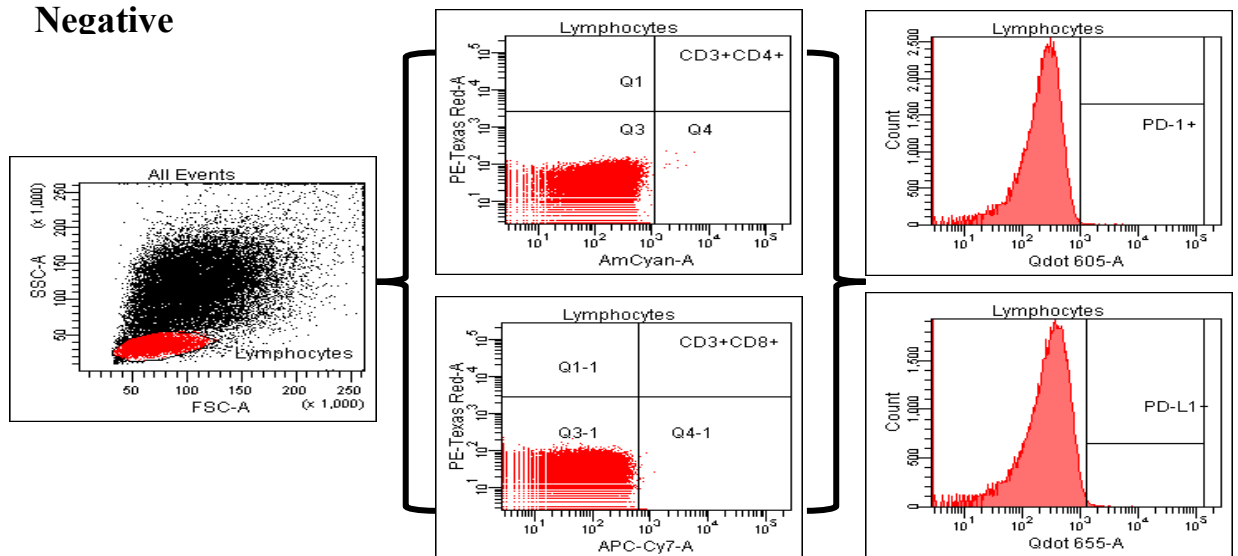
PD-1⁺ or PD-1⁻ CD8⁺ T cells



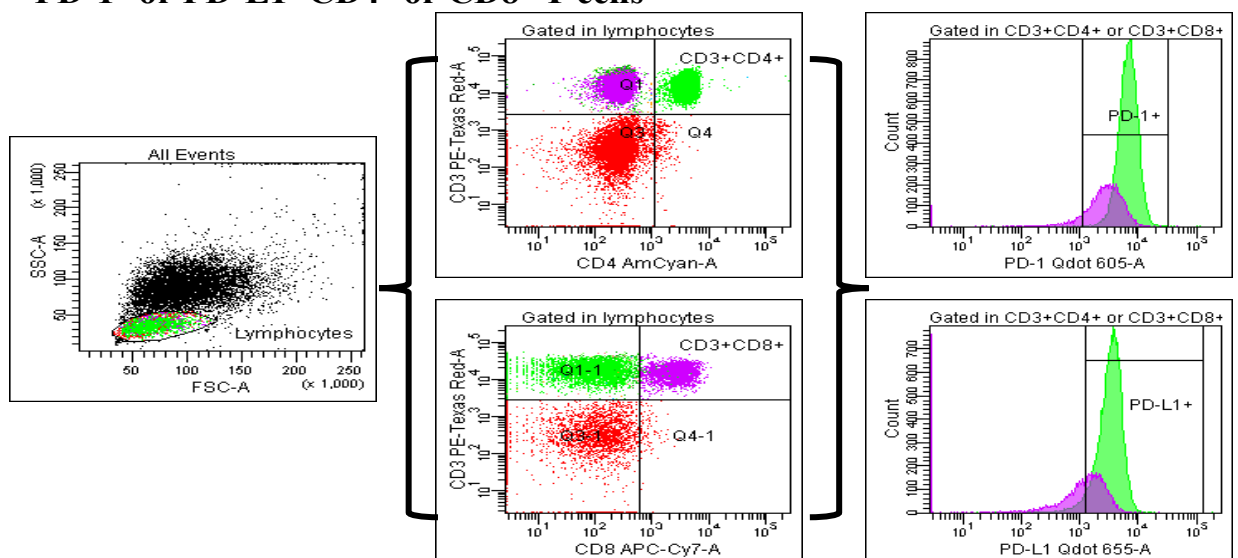
Supplementary Figure 3. Phenotypic analysis of (a) $CD4^+PD-1^+$ or $PD-L1^+$ T cells and $CD8^+PD-1^+$ or $PD-L1^+$ T cells, (b) $CD19^+PD-1^+$ or $PD-L1^+$ B cells and (c) $PD-1^+$ or $PD-L1^+$ DC/monocytes in NSCLC patients. Representative dot plots, as well as the gating strategy for identification and quantification of effector immune cells expressing PD-1 or PD-L1. Arrows indicate the sequence of gating. The gates for each dot plot are presented on the top of each box.

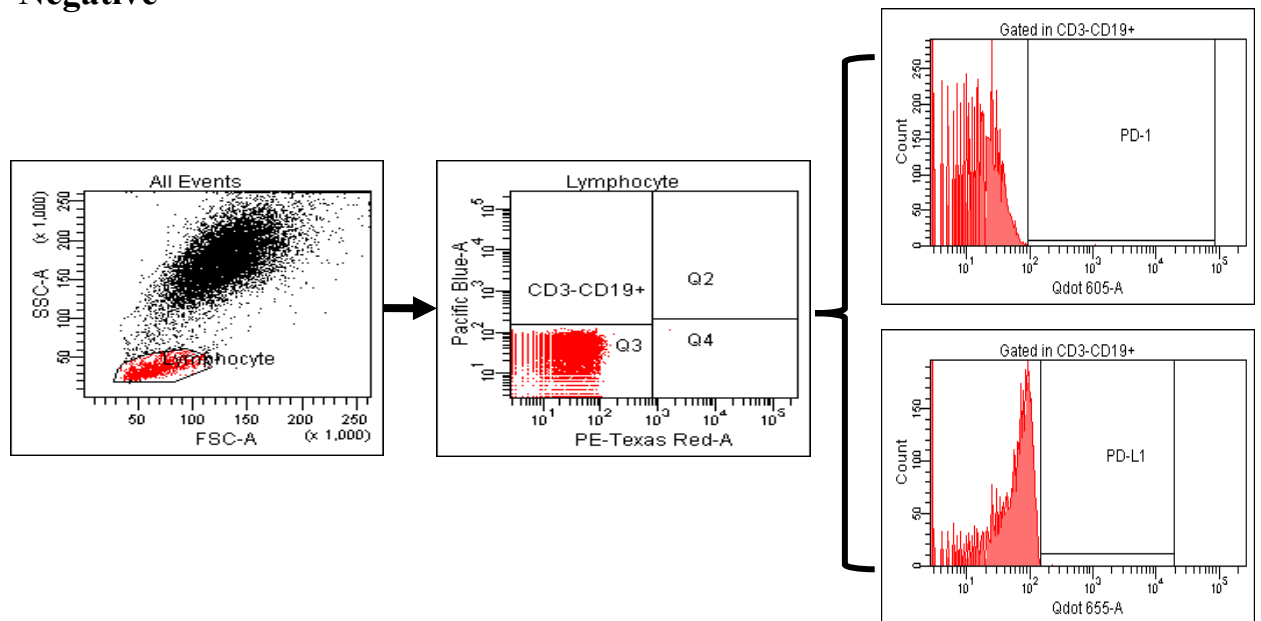
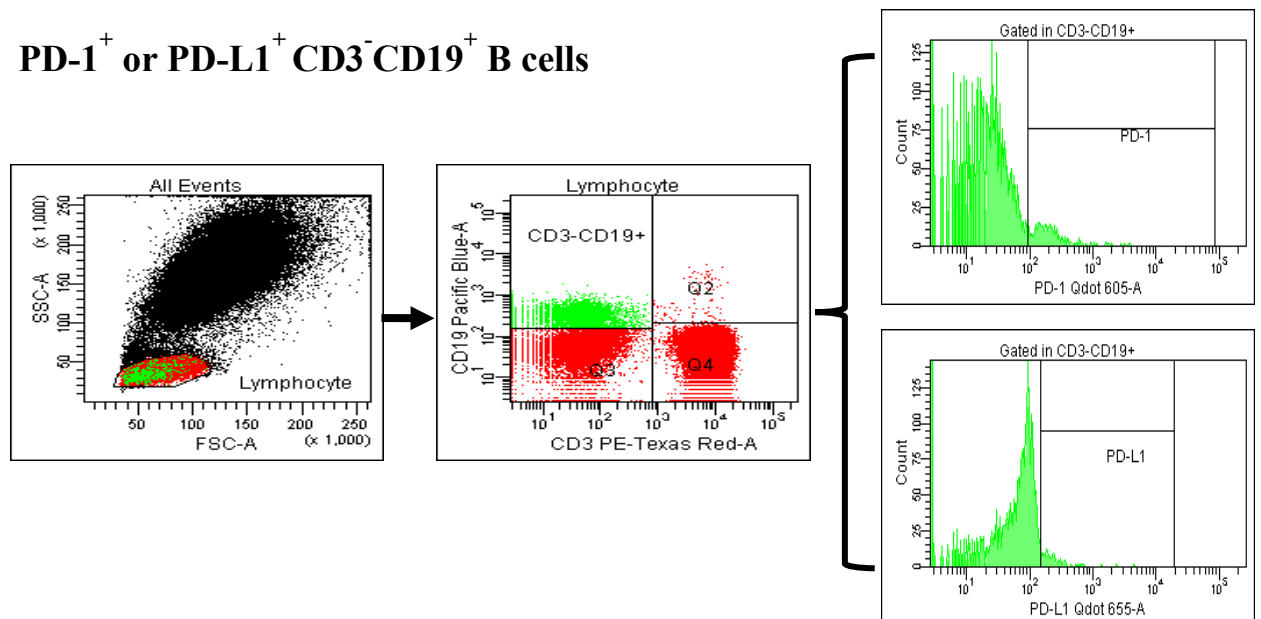
A

Negative



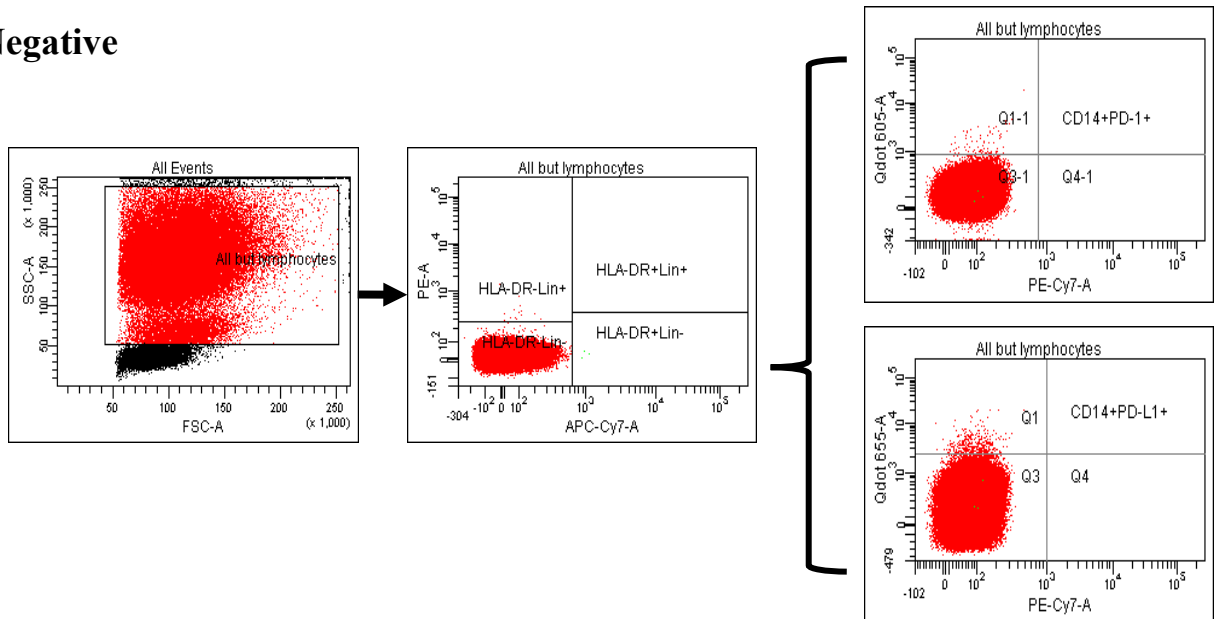
$PD-1^+$ or $PD-L1^+$ $CD4^+$ or $CD8^+$ T cells



B**Negative****PD-1⁺ or PD-L1⁺ CD3⁻CD19⁺ B cells**

C

Negative



PD-1⁺ or PD-L1⁺ DC/monocytes

