

Figure S1. Representative pictures showing the scoring correspondence to the staining intensity observed (Alexa-594): from “-“ (no staining) to “++++” (maximum staining observed). Pictures represent the medial mammillary nuclei stained for AT8. This method was also used for Tau-1 staining. Calibration bar: 100µm.

Staining intensity scoring

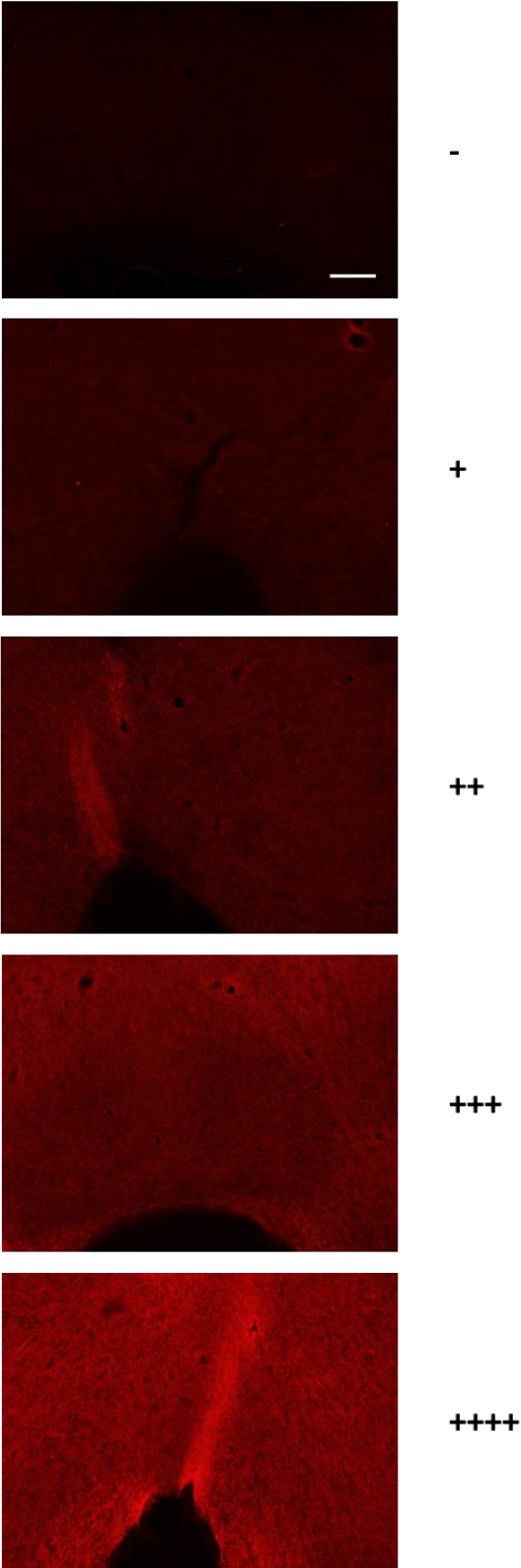


Figure S2. Representative pictures showing microglia, stained with Iba1 (secondary conjugated with Alexa-488). Pictures represent the CA3 field of the hippocampus. C, control (1.9 ± 0.2 cells/ $100\mu\text{m}^2$); N, sample taken at nadir of hypothermia, during the ST (2.5 ± 0.2 cells/ $100\mu\text{m}^2$); R6, sample taken 6h after $35.5\text{ }^\circ\text{C}$ brain temperature (Tb) was reached (5.8 ± 0.4 cells/ $100\mu\text{m}^2$); R38, sample taken 38h after reaching $35.5\text{ }^\circ\text{C}$ Tb (4.8 ± 0.1 cells/ $100\mu\text{m}^2$). Calibration bar: $50\mu\text{m}$.

