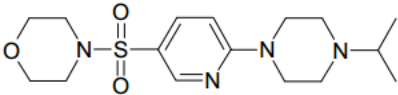
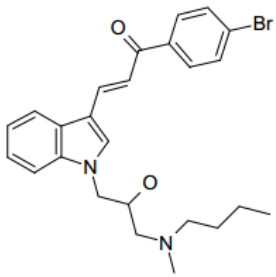
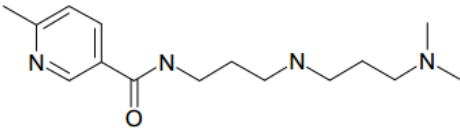
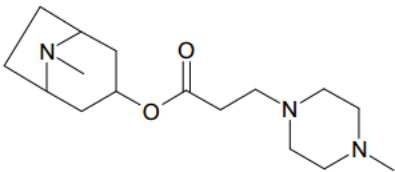
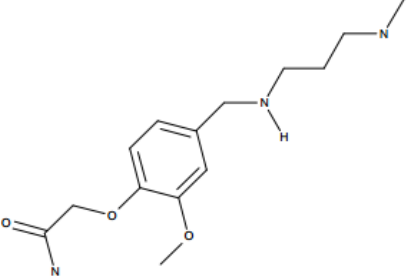
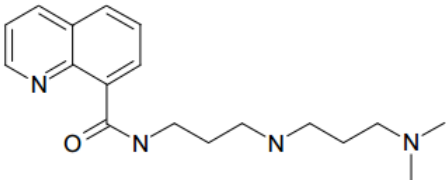
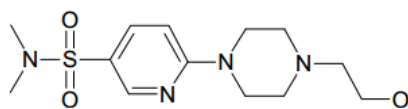


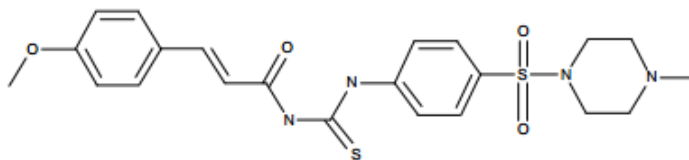
**Supplementary Table S1. Chemical structures selected and purchased for the biochemical tests.**

Compound	Structure
1	
2	
3	
4	
5	
6	

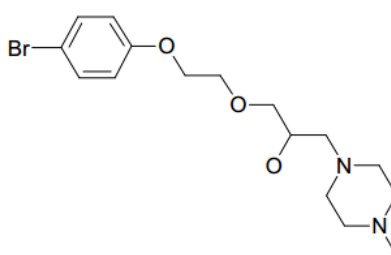
7



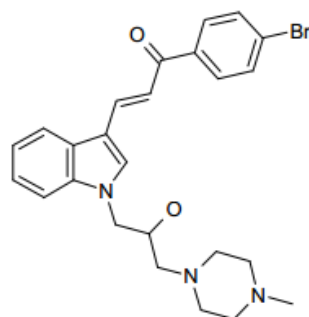
8



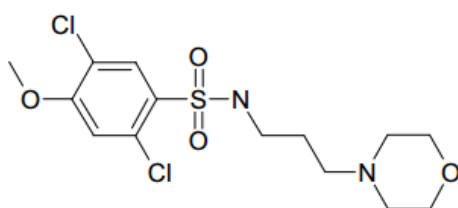
9



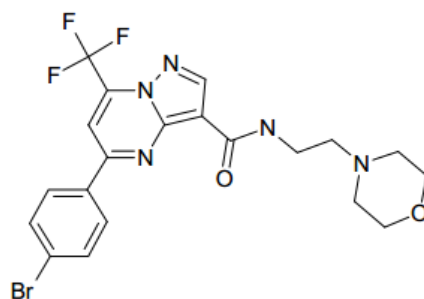
10



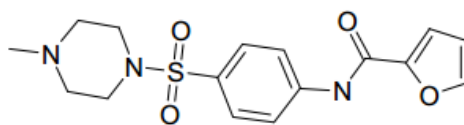
11



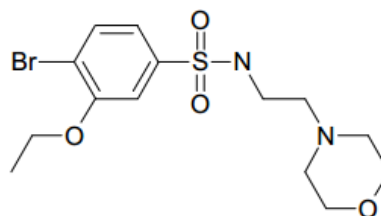
12



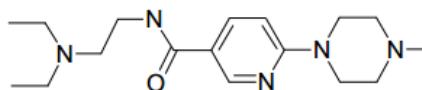
13



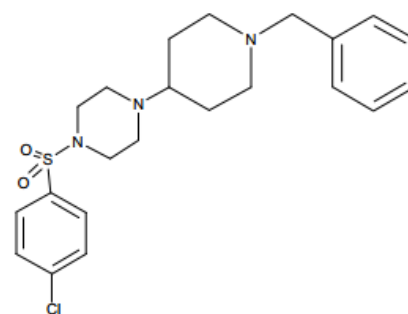
14



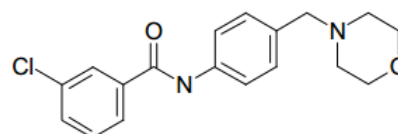
15



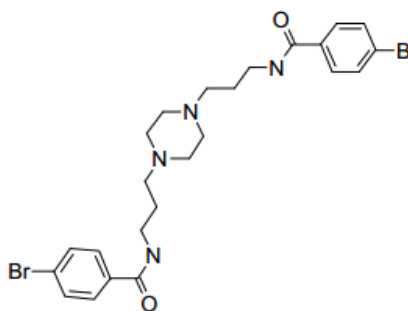
16



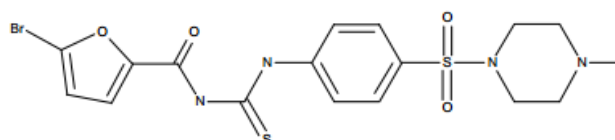
17



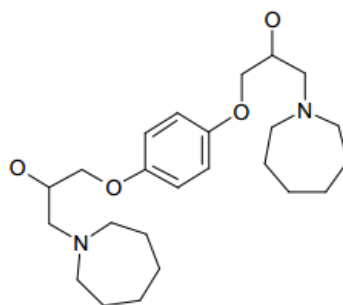
18



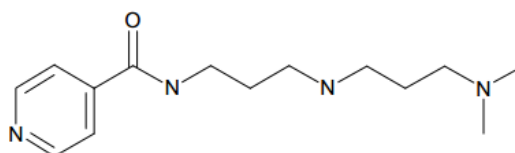
19



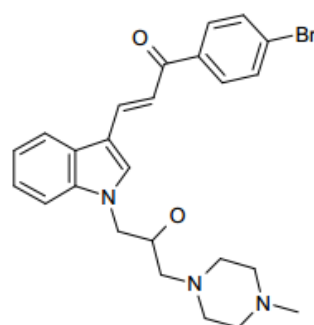
20



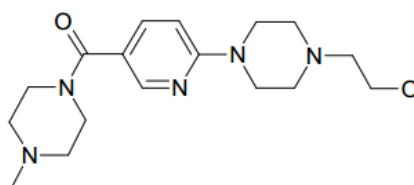
21



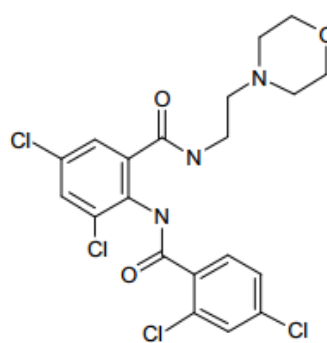
22



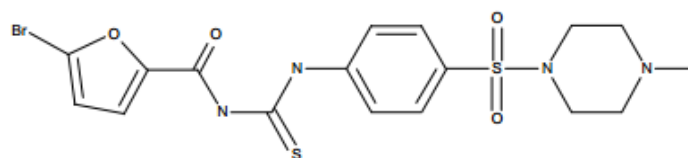
23



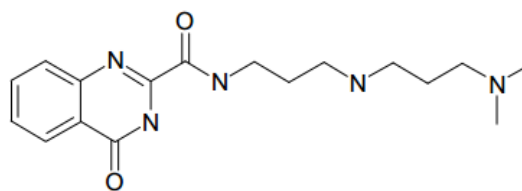
24



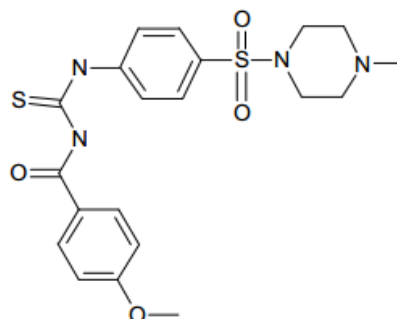
25



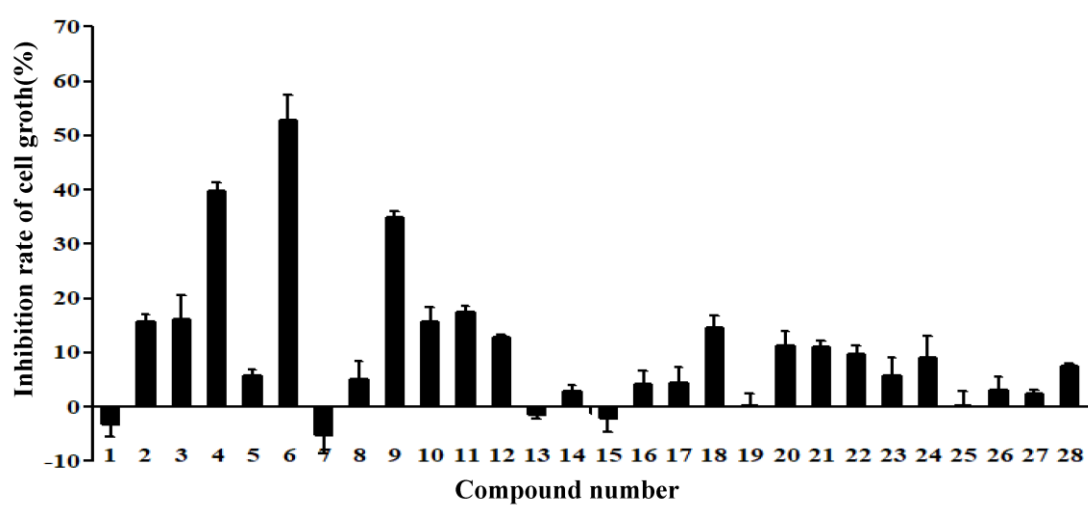
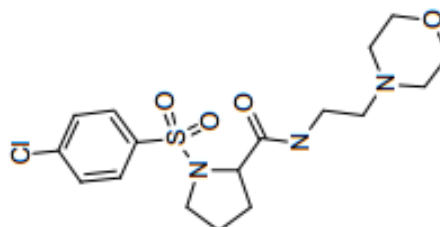
26



27



28



**Supplementary Figure S1. Effects of SI-4650 on cell proliferation in A549 cells.** A549 cells were treated with 80  $\mu\text{mol/L}$  SI-4650 for 48 h. Cell proliferation was then performed by using the MTT assay. The data are shown as means  $\pm$  SD.