

SUPPLEMENTARY INFORMATION

Table 1

Antibody	Vendor	Dilution
anti- <i>Pseudomonas</i> antibody (custom made)	Covance, Denver, PA	1:1000
anti- <i>Acinetobacter</i> antibody (custom made)	Covance, Denver, PA	1:2000
E-cadherin/ CDH1 antibody	ThermoFisher Scientific, Waltham, MA	1:200
pNF- κ B antibody	Abcam, CA	1:200

Table 2

<i>E. coli</i>
<i>Corynebacterium sp.</i>
<i>Enterococcus faecalis</i>
<i>Staphylococcus chromogenes</i>
<i>Staphylococcus aureus</i>
<i>Enterococcus casseliflavus</i>
<i>Streptococcus dysgalactiae</i>
<i>Pasteurella multocida</i>
<i>Streptococcus porcinus</i>
<i>Trueperella pyogenes</i>

Figure Legend

Figure S1

Representative images of H&E-stained day 35 wound tissues (scale bar: 5mm). The re-epithelialized portion is marked with broken lines and the leading epithelial tongue is shown using black arrow heads. The wound epithelial margins is shown in inset (scale bar: 500 μ m).

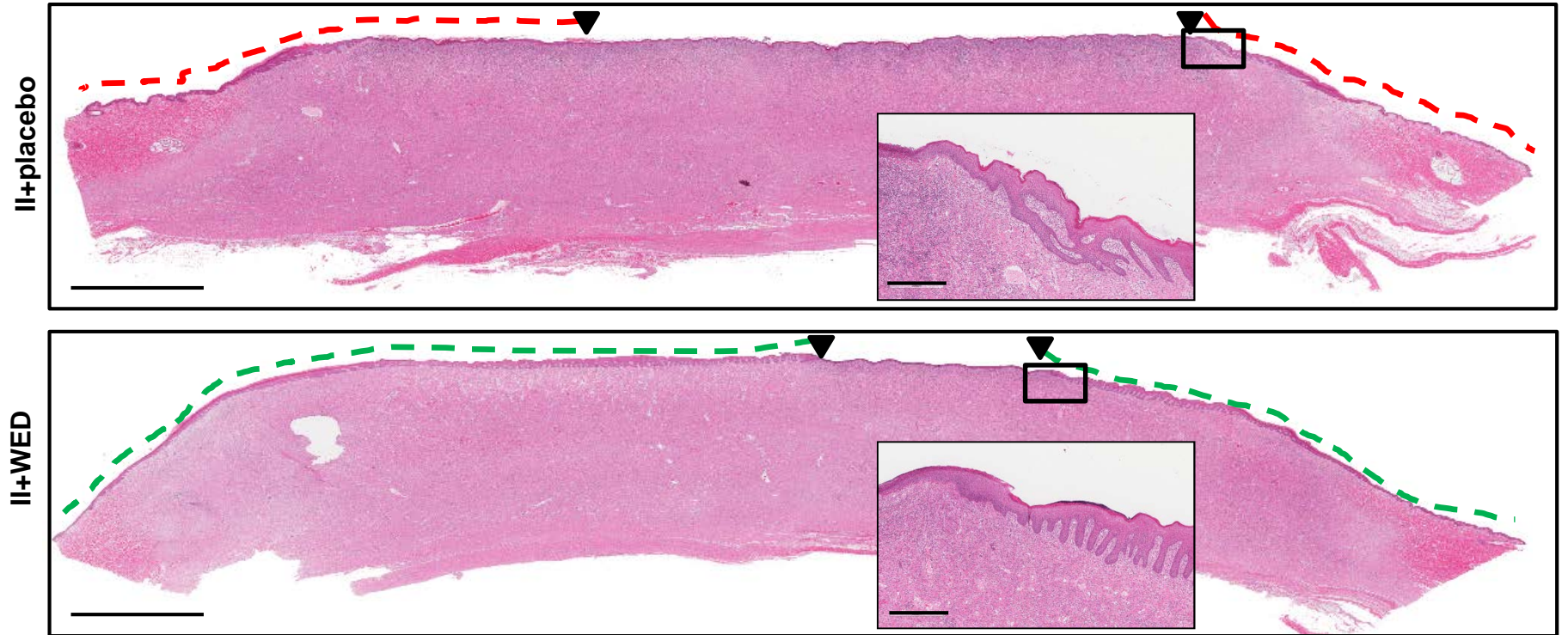


Fig. S1