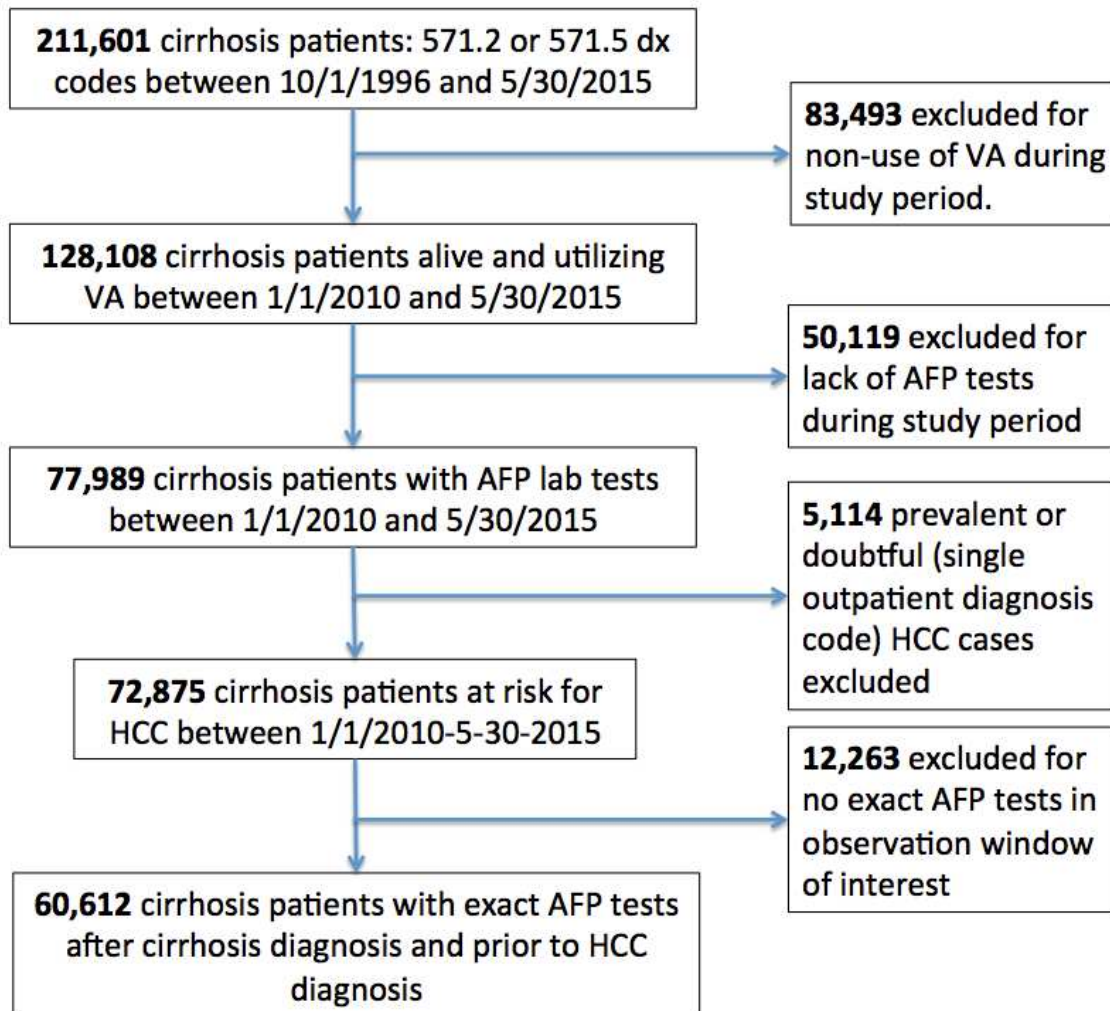


1 **Validation of an HCC Early detection Screening (HES) algorithm in a multi-etiology Veteran's**

2 **Affairs cirrhosis cohort**

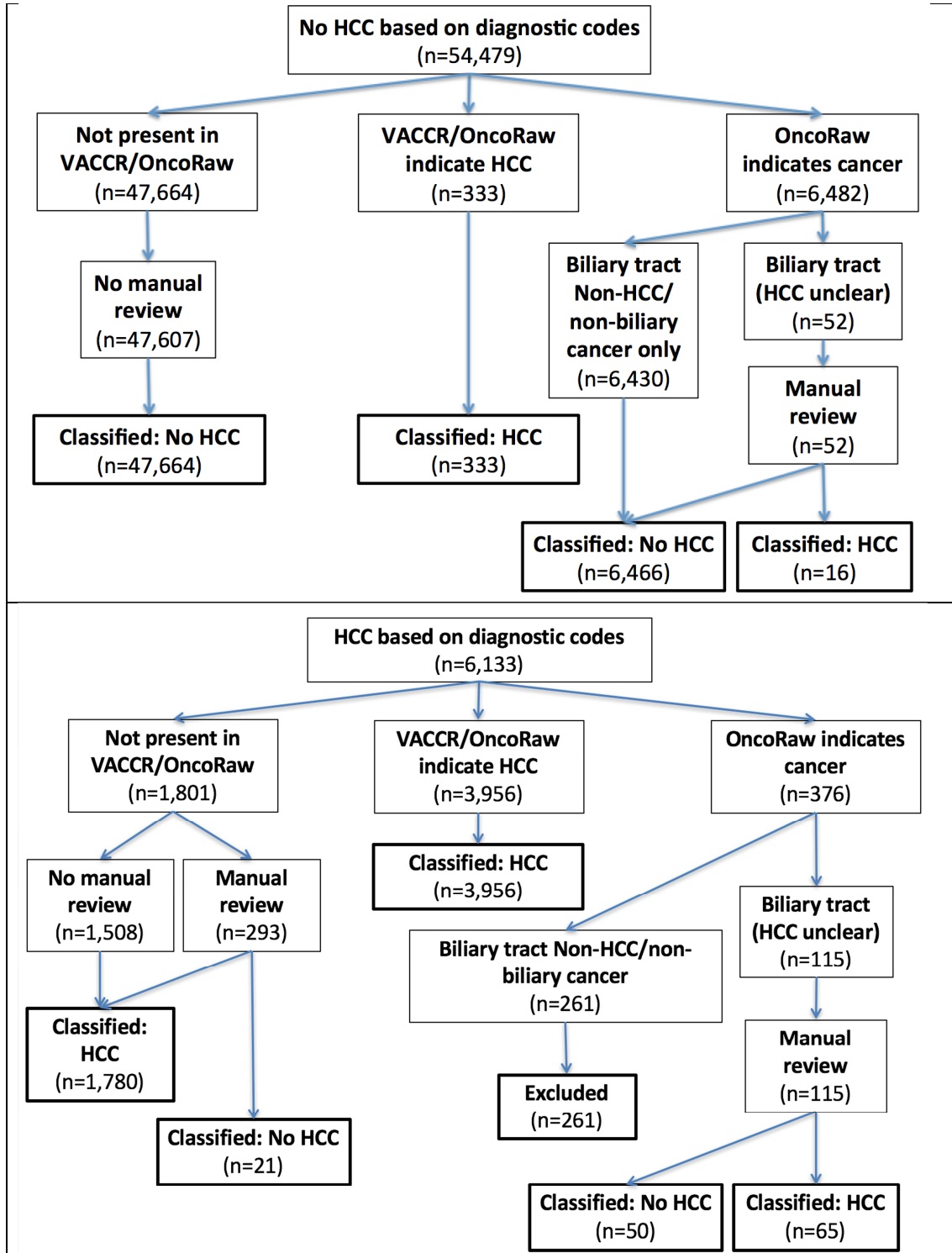
3 **Additional supplementary materials**

4 **Supplementary Figure 1:** Derivation of the study cohort in the Department of Veteran’s Affairs (VA)
5 Corporate Database Warehouse.



6
7
8
9
10

11 **Supplementary Figure 2:** HCC classification procedure in the Department of Veteran's Affairs (VA)
 12 cirrhosis cohort.



13 * VACCR: VA Central Cancer Registry; OncoRaw: VA Corporate Database Warehouse oncology raw data
 14 files.

15 **Supplementary Table 1: Demographic table**

	Controls	HCC cases
N	33,627	4,804
Age at baseline AFP (years)	60.67 (56.18-64.44)	60.83 (57.22-64.49)
Sex		
Male	32,575 (96.87%)	4,743 (98.73%)
Female	1,052 (3.13%)	61 (1.27%)
Race		
Non-Hispanic White	21,215 (63.09%)	2,955 (61.51%)
Non-Hispanic Black	6,705 (19.94%)	934 (19.44%)
Hispanic	3,210 (9.55%)	578 (12.03%)
Other	2,497 (7.43%)	337 (7.01%)
Number of AFP tests		
1	13,528 (40.23%)	1,801 (37.49%)
2	7,265 (21.60%)	932 (19.40%)
3-4	7,677 (22.83%)	1,173 (24.42%)
>4	5,157 (15.34%)	898 (18.69%)
Months between AFP tests	6.21 (3.71-11.40)	5.29 (2.76-8.97)
Baseline AFP (ng/ml)	4.40 (2.80-7.97)	11.01 (5.20-37.23)
Baseline ALT (ng/ml)	40 (25-70)	56 (34-90)
Baseline PLT (1000's)	131 (89-183)	99 (70-138)
Etiology of cirrhosis		
Alcoholic liver disease	24,137 (71.78%)	3,737 (77.79%)
Hepatitis C virus	16,264 (48.37%)	3,392 (70.61%)
Hepatitis B virus	2,962 (8.81%)	437 (9.10%)
Nonalcoholic fatty liver disease	5,636 (16.76%)	584 (12.16%)

16 * Continuous variables: median and interquartile range (25th and 75th percentiles)

17 * Categorical variables: number and percentage

18 **Definitions of time-dependent patient-level sensitivity and screening-level false positive rate**

19 **Measure/Biomarker used in screening:** the predicted probability of HCC in the next six months from
 20 current AFP test.

21 **Positive tests:** if the predicted probability of HCC in the next six months exceeds a threshold c .

22 **Sensitivity within T months corresponding to 10% screening level false positive rate:** the proportion of
 23 HCC cases with ≥ 1 positive tests within T months prior to their HCC diagnosis, among all the HCC cases
 24 with at least one AFP test within T months of their HCC diagnosis. The threshold c is selected to ensure a
 25 10% screening level false positive rate (T months).

26 **Screening level false positive test (T months):** the proportion of positive tests among all tests done in
 27 either controls with no HCC or in cases when testing occurs more than 6 months prior to HCC diagnosis.

28 **Sensitivity between T1 and T2 months corresponding to 10% screening level false positive rate:** the
 29 proportion of HCC cases with ≥ 1 positive tests within T1-T2 months prior to their HCC diagnosis among
 30 all the HCC cases with at least one AFP test during this period. The threshold c is selected to ensure a
 31 10% screening level false positive rate (T2 months).

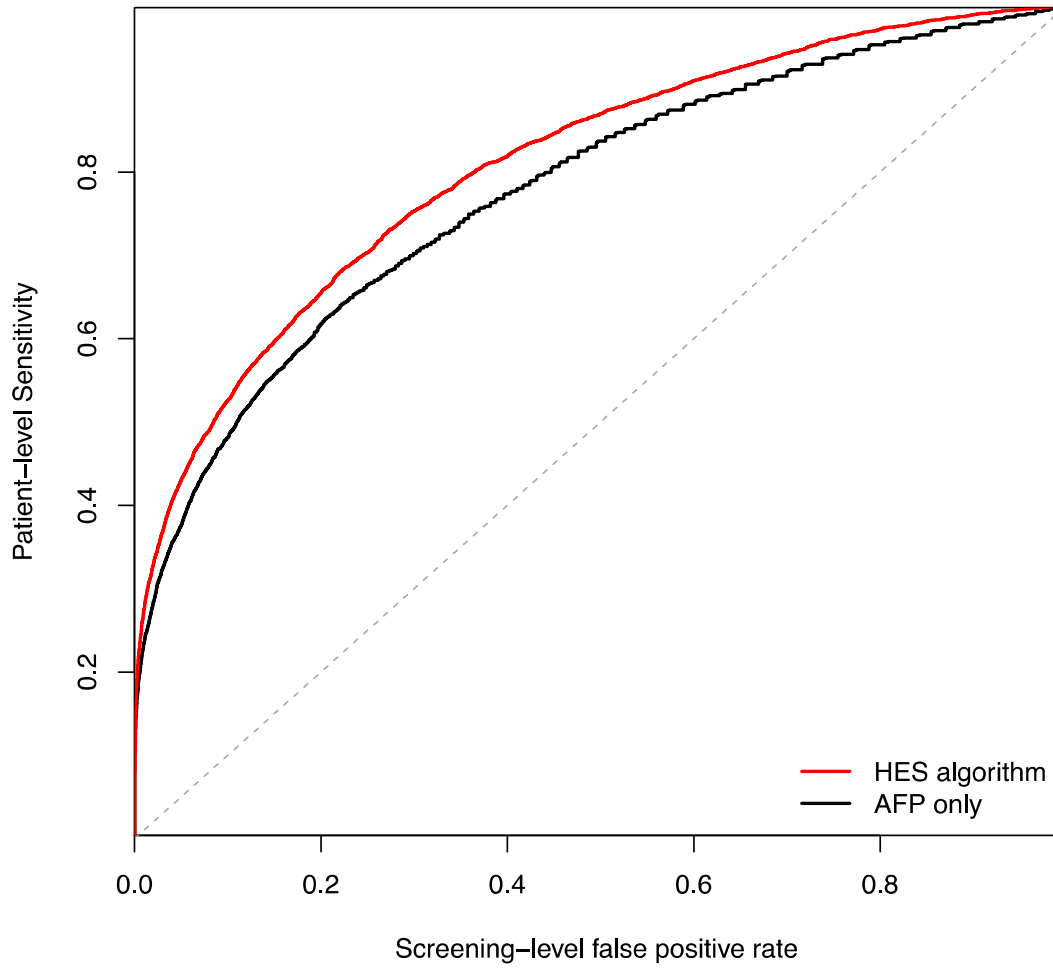
32 **Supplementary Figure 3:** Visual illustration of periods during which a positive screening result was
 33 considered to be a true positive screen and periods where a positive screen result was considered to be
 34 a false positive screen in HCC cases for different time-dependent definitions of patient-level sensitivity
 35 and screening-level false positive rate.



36

37

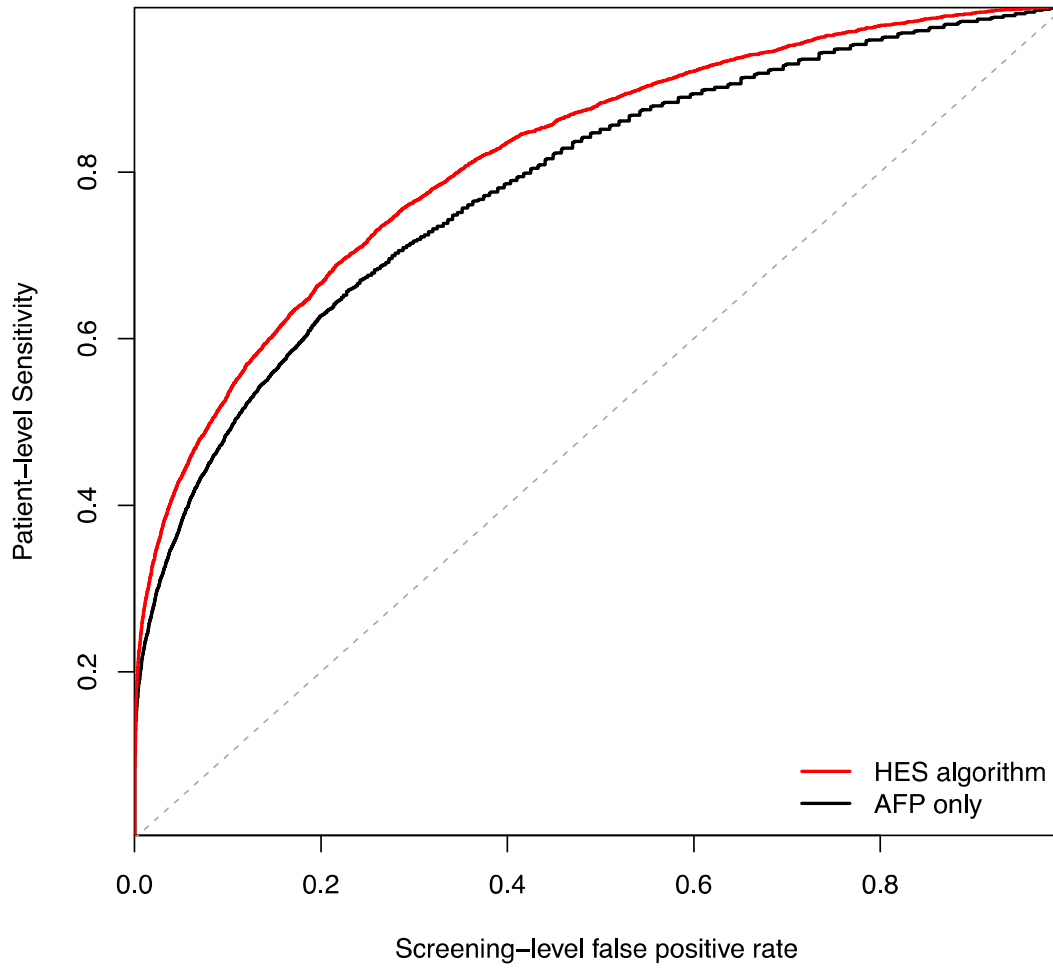
38 **Supplementary Figure 4:** Receiver operating characteristic (ROC) curves within T=6 months
39 prior to HCC diagnosis.



40

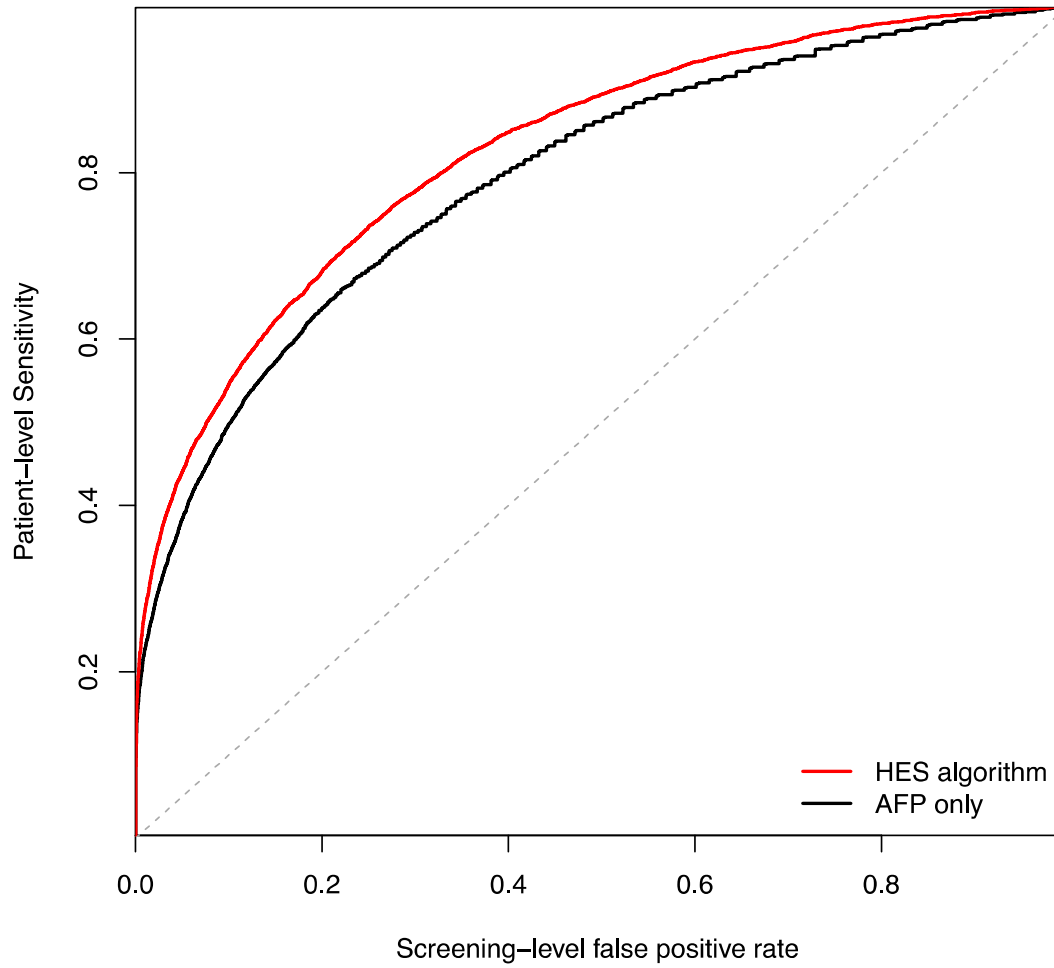
41

42 **Supplementary Figure 5:** Receiver operating characteristic (ROC) curves within T=12 months
43 prior to HCC diagnosis.



44
45
46

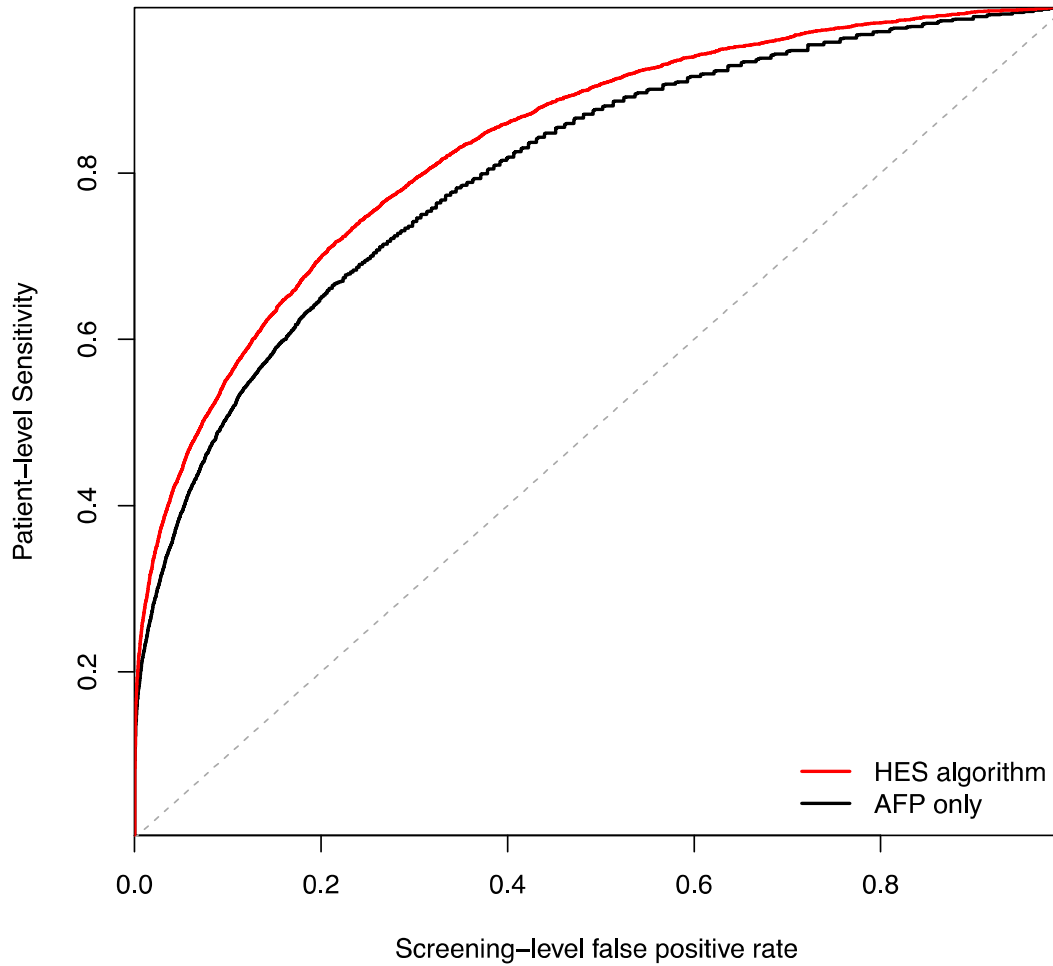
47 **Supplementary Figure 6:** Receiver operating characteristic (ROC) curves within T=24 months
48 prior to HCC diagnosis.



49

50

51 **Supplementary Figure 7:** Receiver operating characteristic (ROC) curves any time prior to HCC
52 diagnosis.



53

54 **Supplementary Table 2:** Alternative definition of HCC diagnosis time frame

Patient-level sensitivity corresponding to 10% screening-level false positive rate	4,804 HCC cases; 33,627 cirrhosis controls			
	0-6 months	6-12 months	12-24 months	24-Ever
HES algorithm	52.56 (95% CI: 50.36-53.20)	36.62 (95% CI: 33.52-37.79)	28.41 (95% CI: 26.21-28.77)	26.06 (95% CI: 23.47-27.01)
AFP only	48.13 (95% CI: 46.48-48.62)	33.87 (95% CI: 31.45-35.14)	26.40 (95% CI: 23.99-27.28)	25.21 (95% CI: 22.08-26.30)
Bootstrap p-values:	<0.0005	<0.0005	<0.0005	0.095

55

56

57 **Supplementary Table 3: Evaluating the HES algorithm in etiology subgroups**

Patient-level sensitivity corresponding to 10% screening-level false positive rate	Hepatitis C only* 337 HCC cases; 1,888 cirrhosis controls			
	6 months	12 months	24 months	Ever
HES algorithm	42.96 (95% CI: 35.57-48.33)	42.48 (95% CI: 36.39-47.87)	43.16 (95% CI: 36.92-48.72)	43.32 (95% CI: 36.51-48.83)
AFP only	38.99 (95% CI: 31.90-44.19)	37.26 (95% CI: 30.46-41.97)	37.08 (95% CI: 29.47-41.69)	38.28 (95% CI: 31.45-43.90)
Bootstrap p-values:	0.0205	0.0060	0.0050	0.0050

58 Patients included in this analysis are hepatitis C positive, hepatitis B negative/unknown, have no
59 alcoholic liver disease and no non-alcoholic fatty liver disease.

Patient-level sensitivity corresponding to 10% screening-level false positive rate	Alcoholic liver disease only* 945 HCC cases; 11,294 cirrhosis controls			
	6 months	12 months	24 months	Ever
HES algorithm	57.54 (95% CI: 53.59-60.60)	57.71 (95% CI: 54.22-60.87)	58.03 (95% CI: 54.20-60.83)	59.33 (95% CI: 55.77-62.24)
AFP only	53.65 (95% CI: 49.70-56.56)	53.71 (95% CI: 50.35-56.99)	53.99 (95% CI: 50.35-57.11)	54.51 (95% CI: 50.94-58.08)
Bootstrap p-values:	<0.0005	0.0005	<0.0005	<0.0005

60 Patients included in this analysis have alcoholic liver disease, are hepatitis C negative/unknown,
61 hepatitis B negative/unknown, and have no non-alcoholic fatty liver disease.

Patient-level sensitivity corresponding to 10% screening-level false positive rate	Hepatitis C or Alcoholic liver disease only* 3,737 HCC cases; 23,996 cirrhosis controls			
	6 months	12 months	24 months	Ever
HES algorithm	51.88 (95% CI: 49.62-52.71)	52.39 (95% CI: 49.96-53.12)	53.59 (95% CI: 51.78-54.23)	54.70 (95% CI: 52.79-55.32)
AFP only	47.40 (95% CI: 45.61-48.04)	47.93 (95% CI: 45.75-48.50)	48.92 (95% CI: 46.88-49.54)	50.20 (95% CI: 47.77-50.97)
Bootstrap p-values:	<0.0005	<0.0005	<0.0005	<0.0005

62 Patients included in this analysis are either hepatitis C positive or have alcoholic liver disease, are
63 hepatitis B negative/unknown, and no non-alcoholic fatty liver disease.