

In the format provided by the authors and unedited.

Mitochondrial double-stranded RNA triggers antiviral signalling in humans

Ashish Dhir^{1*}, Somdutta Dhir^{1,12}, Lukasz S. Borowski^{2,3,12}, Laura Jimenez⁴, Michael Teitell⁴, Agnès Rötig⁵, Yanick J. Crow^{5,6,7}, Gillian I. Rice⁸, Darragh Duffy^{9,10}, Christelle Tamby⁵, Takayuki Nojima¹, Arnold Munnich⁵, Manuel Schiff⁵, Claudia Ribeiro de Almeida¹, Jan Rehwinkel¹¹, Andrzej Dziembowski^{2,3}, Roman J. Szczesny^{2,3*} & Nicholas J. Proudfoot^{1*}

¹Sir William Dunn School of Pathology, University of Oxford, Oxford, UK. ²Institute of Biochemistry and Biophysics, Polish Academy of Sciences, Warsaw, Poland. ³Faculty of Biology, University of Warsaw, Warsaw, Poland. ⁴Department of Pathology and Laboratory Medicine, University of California, Los Angeles, Los Angeles, CA, USA. ⁵INSERM UMR1163, Institut Imagine, Paris, France. ⁶Paris Descartes University, Sorbonne-Paris-Cité, Institut Imagine, Paris, France. ⁷Centre for Genomic and Experimental Medicine, MRC Institute of Genetics and Molecular Medicine, University of Edinburgh, Edinburgh, UK. ⁸Division of Evolution and Genomic Sciences, School of Biological Sciences, Faculty of Biology, Medicine and Health, University of Manchester, Manchester, UK. ⁹Immunobiology of Dendritic Cells, Institut Pasteur, Paris, France. ¹⁰INSERM U1223, Paris, France. ¹¹MRC Human Immunology Unit, MRC Weatherall Institute of Molecular Medicine, Radcliffe Department of Medicine, University of Oxford, Oxford, UK. ¹²These authors contributed equally: Somdutta Dhir, Lukasz S. Borowski. *e-mail: ashish.dhir@path.ox.ac.uk; rszczesny@ibb.waw.pl; nicholas.proudfoot@path.ox.ac.uk

Figure1e ED Figure 3c

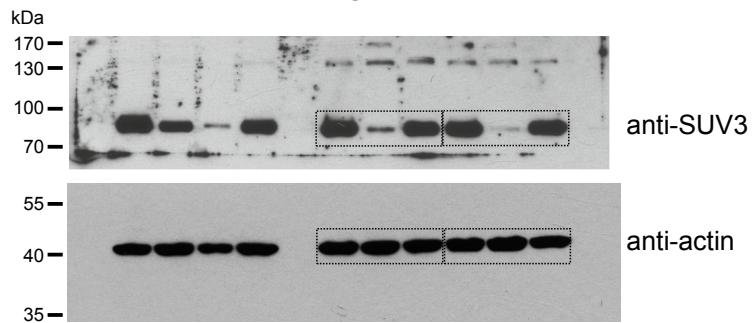
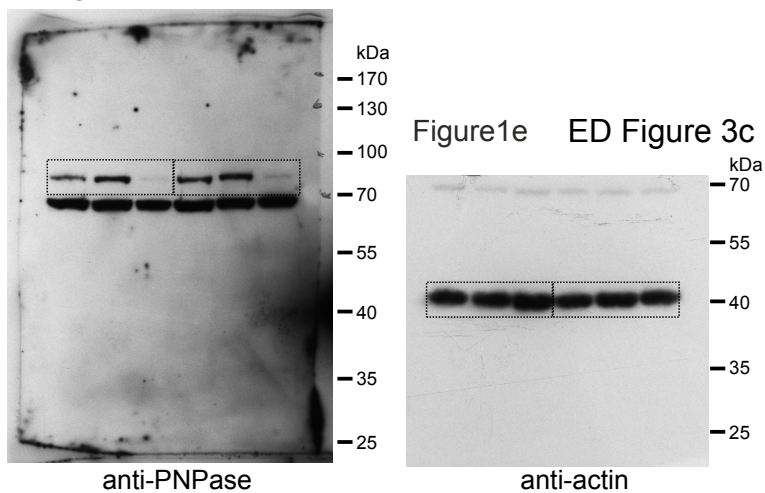
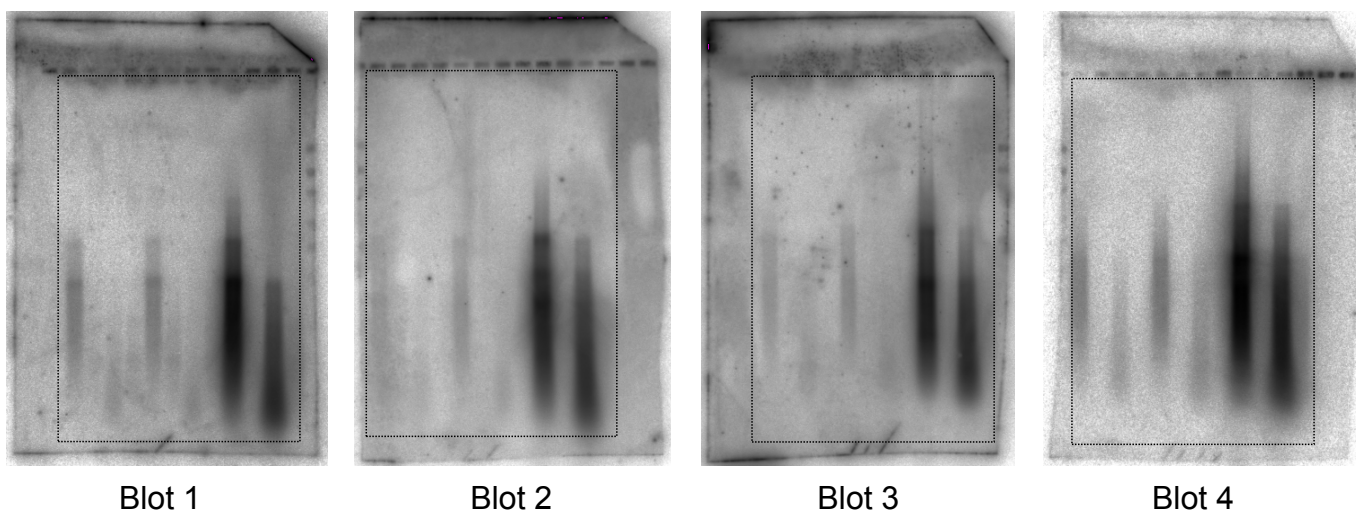


Figure1e ED Figure 3c



ED Figure 4b



ED Figure 5c

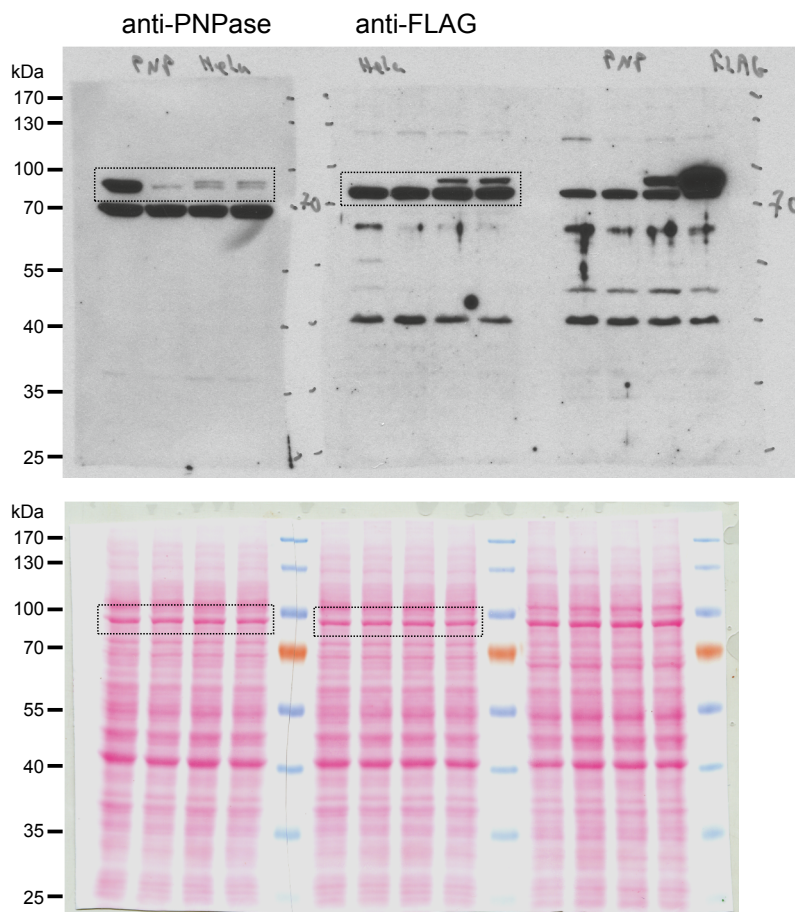


Figure 3b

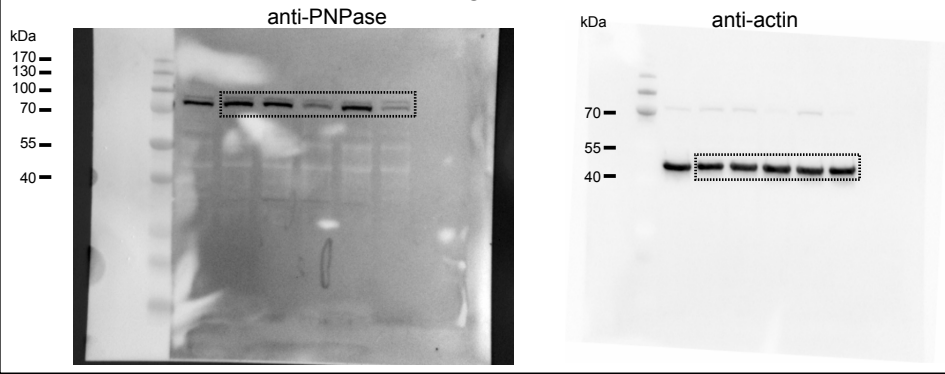


Figure 3d

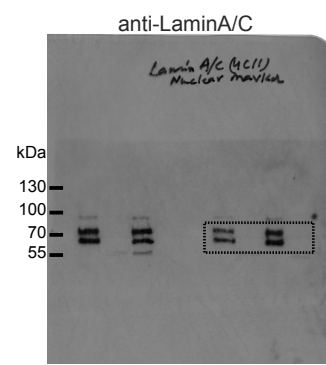


Figure 3d

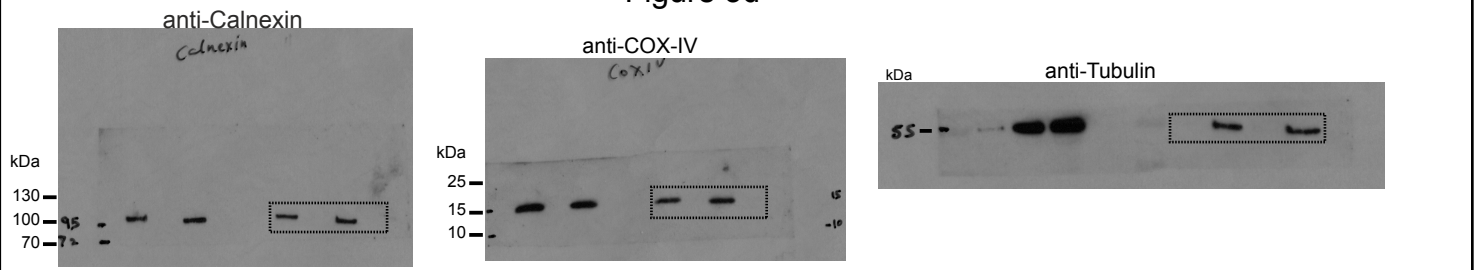
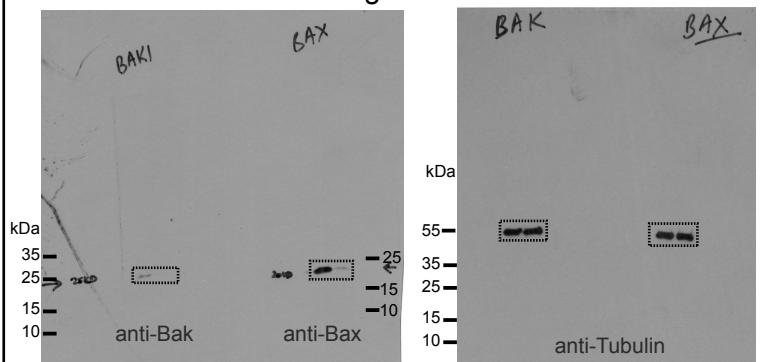
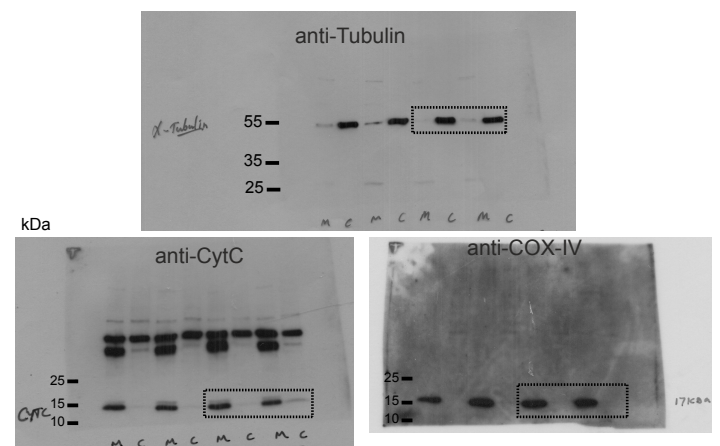


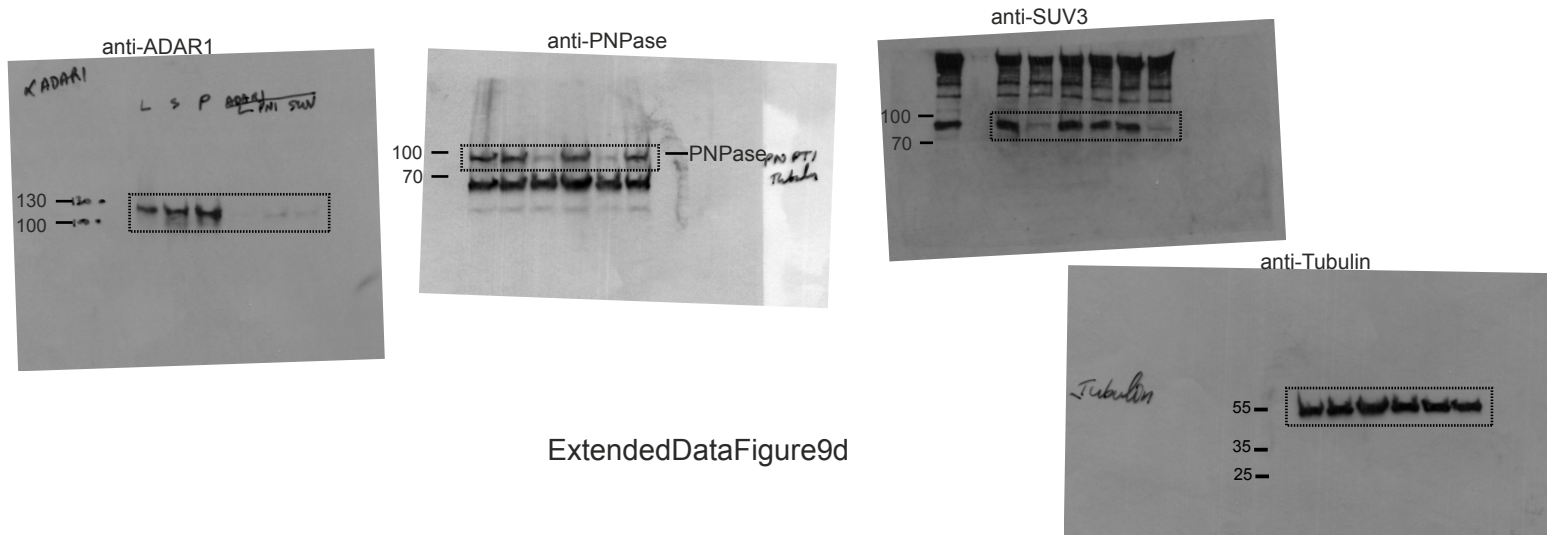
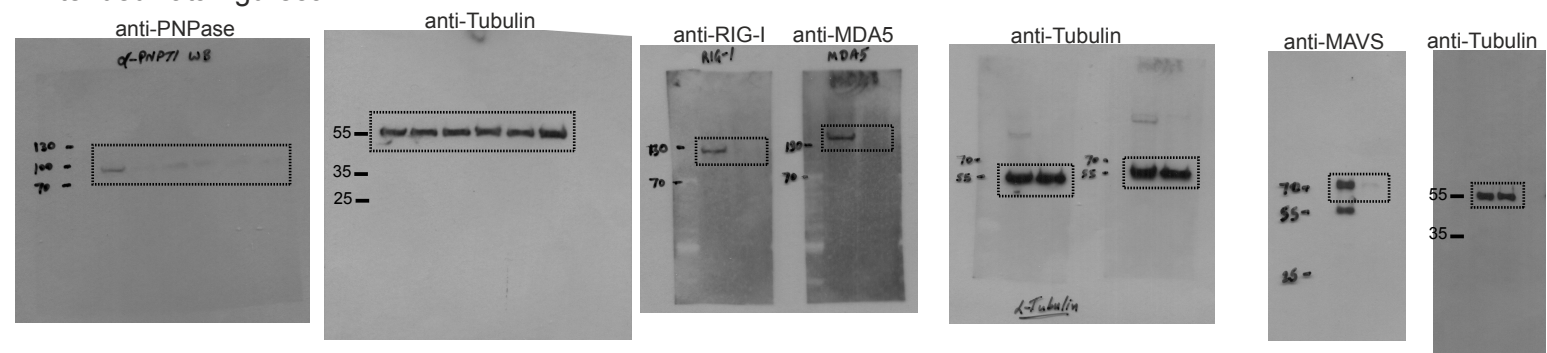
Figure 4c



ExtendedDataFigure7c



ExtendedDataFigure8a



ExtendedDataFigure9d

Extended Data Figure 1e

