

SUPPLEMENTARY MATERIALS

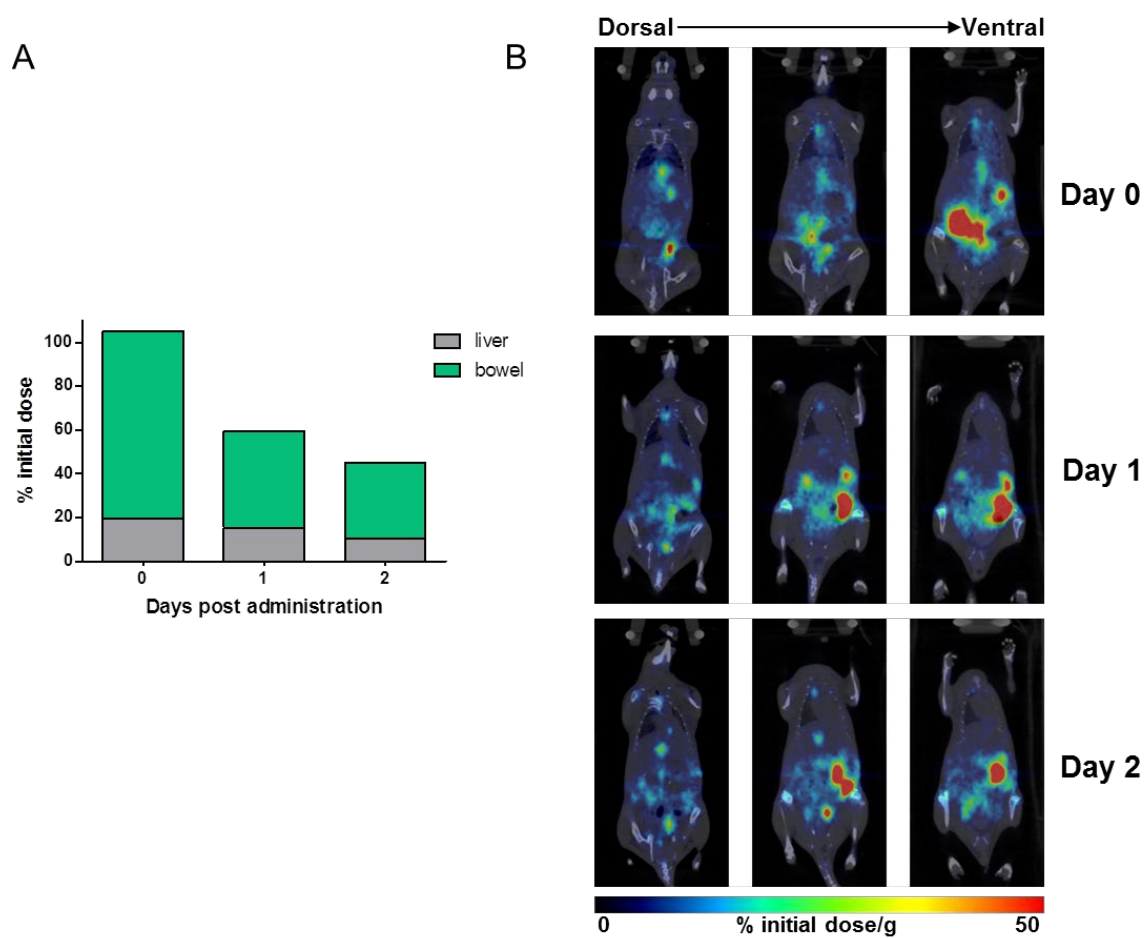


Figure S1. MicroPET-CT images of ^{89}Zr -labeled spheroid hepatocytes at 2, 24, and 48 h post-intraperitoneal transplantation in mice. (A) Percent of initial administered dose present in liver, spleen, and intestine at the 2, 24, and 48 h time points in intraperitoneal mice. (B) Coronal images of a representative intraperitoneal mouse showing weak liver signal.

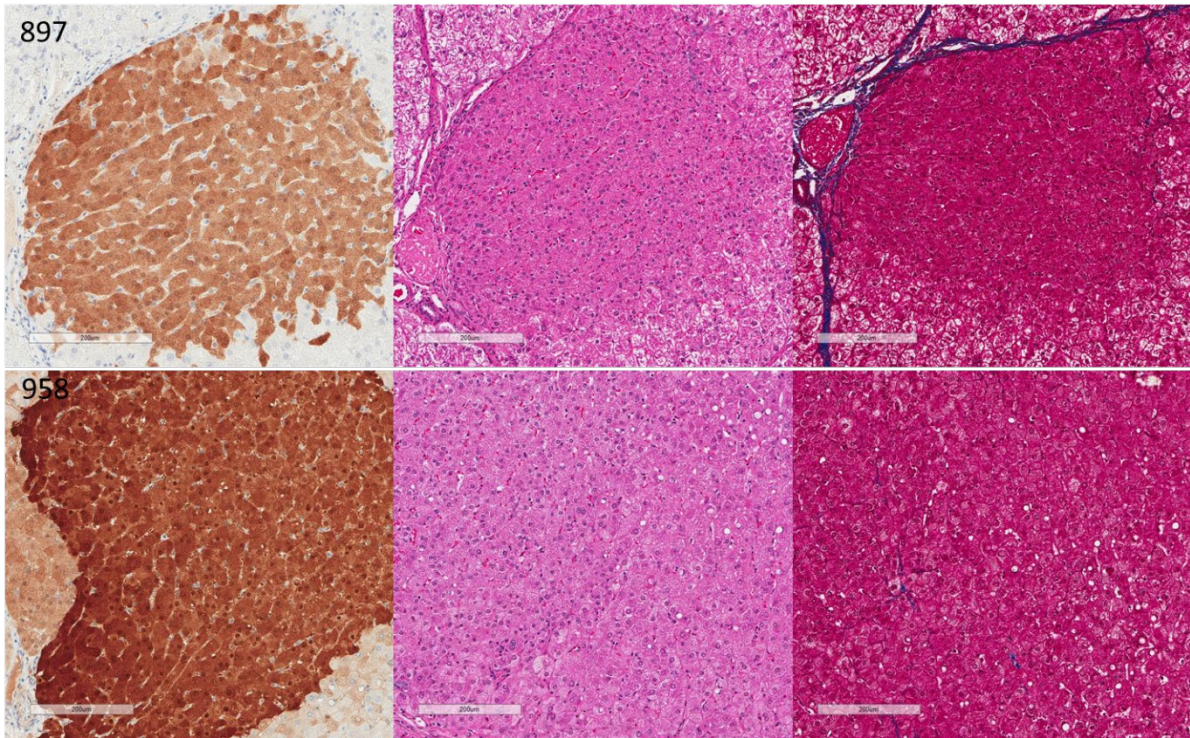


Figure S2. Further spheroid-transplanted group histology. Representative liver tissues stained for FAH by immunohistochemistry from spheroid-transplanted pigs 897 (top) and 958 (bottom) at 9-10 months post-transplantation, showing FAH-positive nodules (left) and no evidence of gross liver pathology on H&E- (middle) or Masson's trichrome-stained (right) liver sections. Scale bars, 200 μ m.