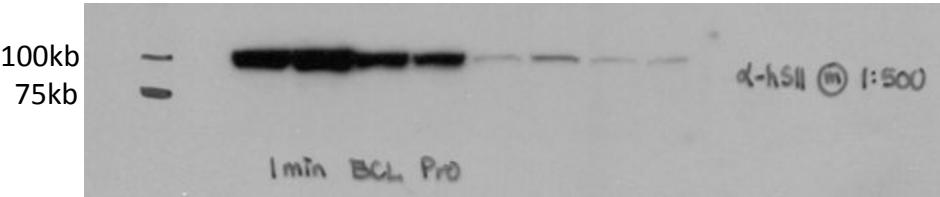
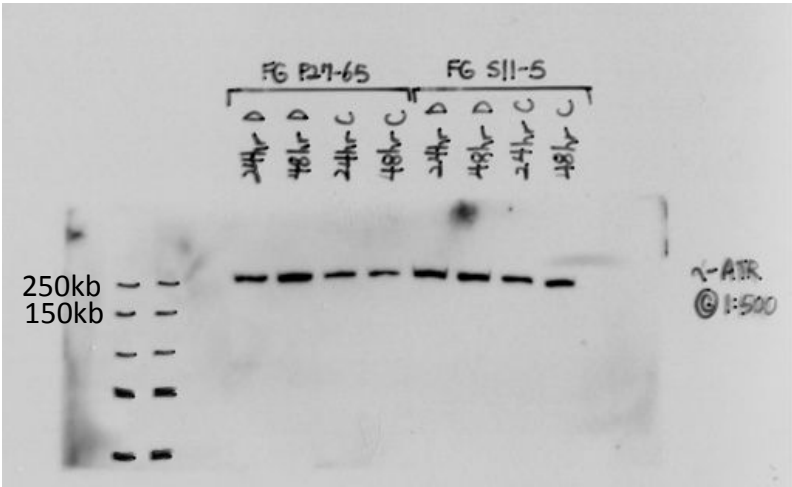


Figure 1b : FG cells

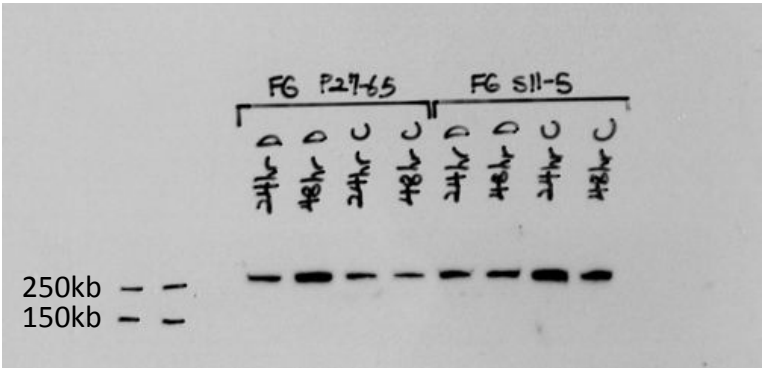
Anti-SLFN11 IB



Anti-ATR IB



Anti-ATM IB



Anti-GAPDH IB

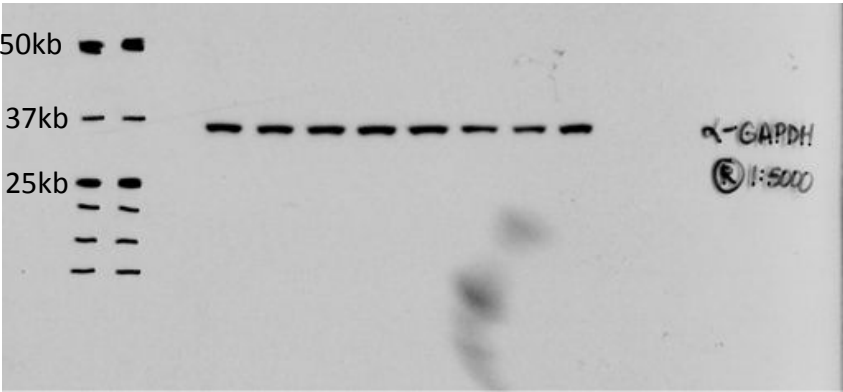
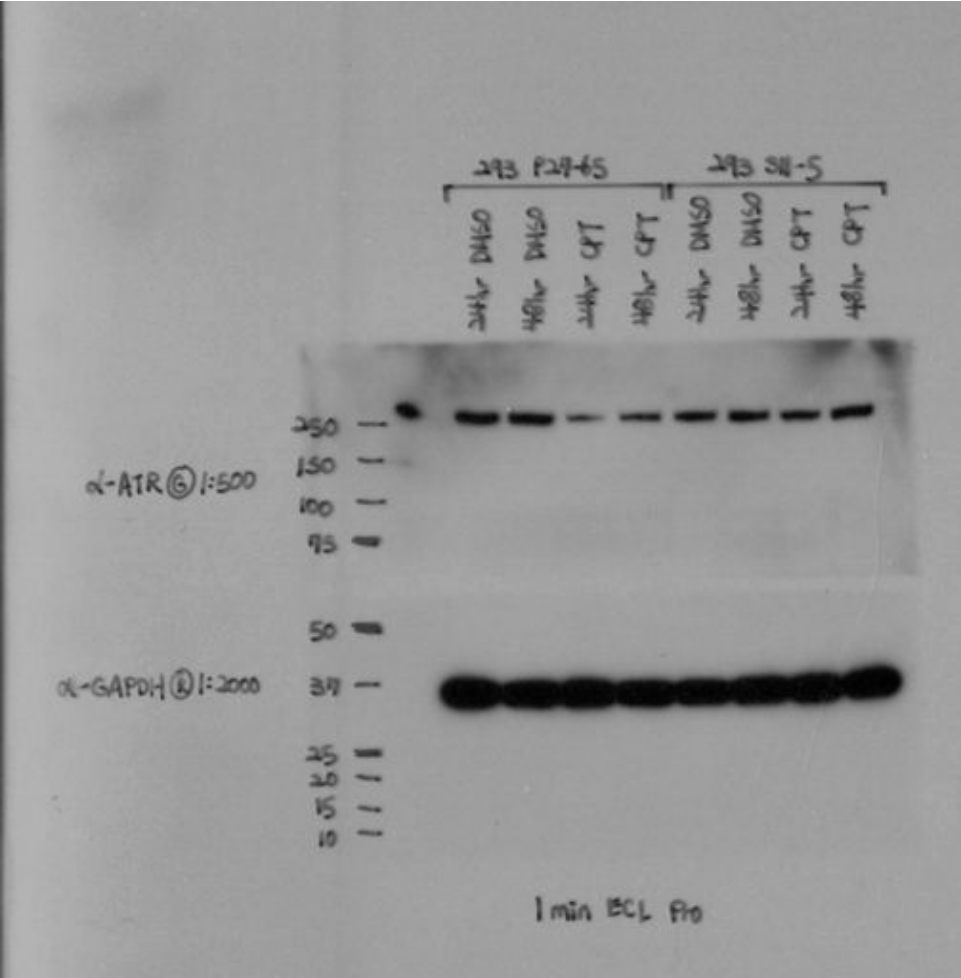
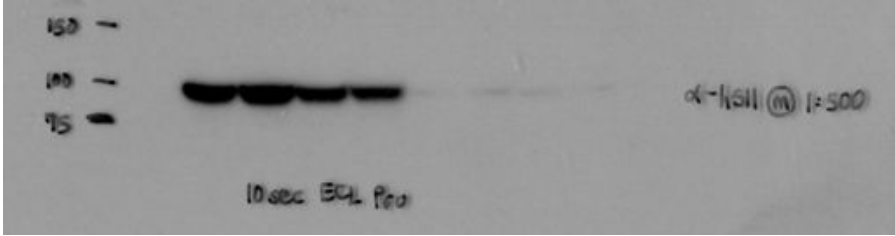


Figure 1e: HEK293

Anti-ATR IB



Anti-SLFN11 IB



Anti-GAPDH IB

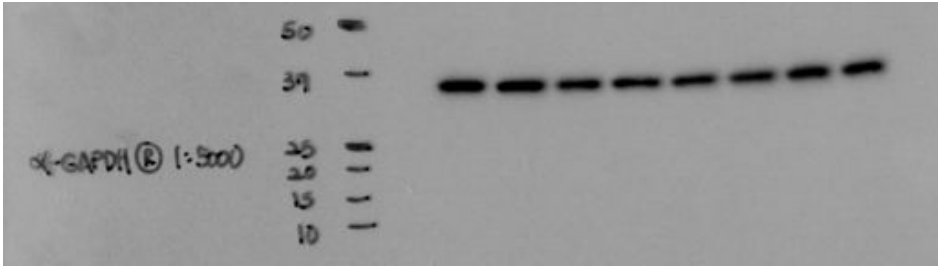
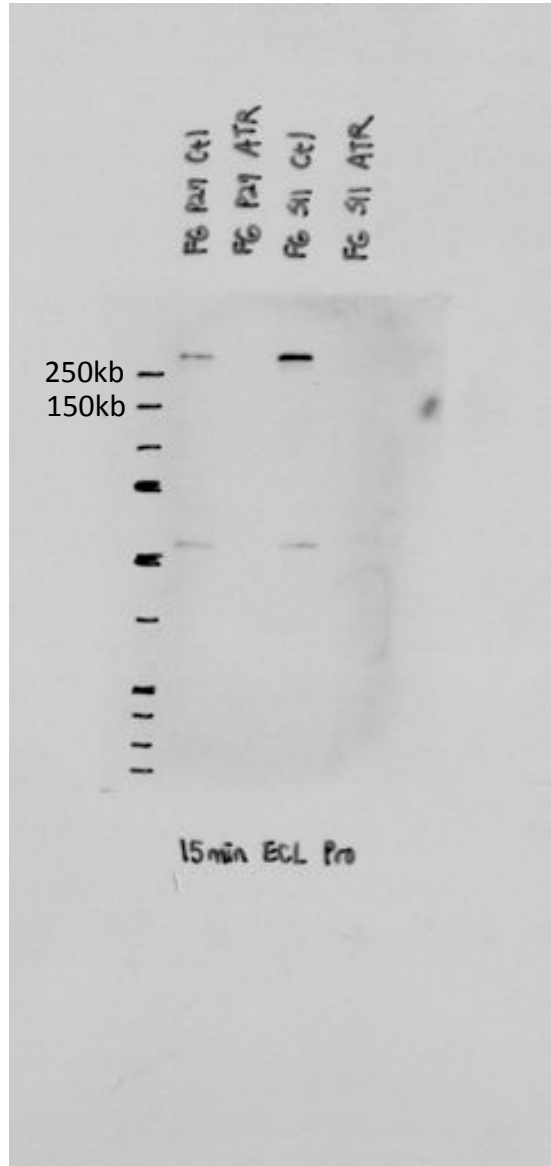
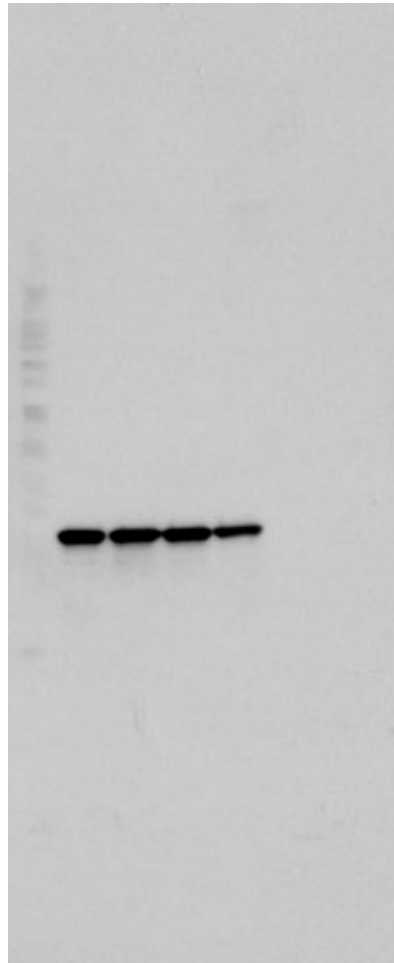


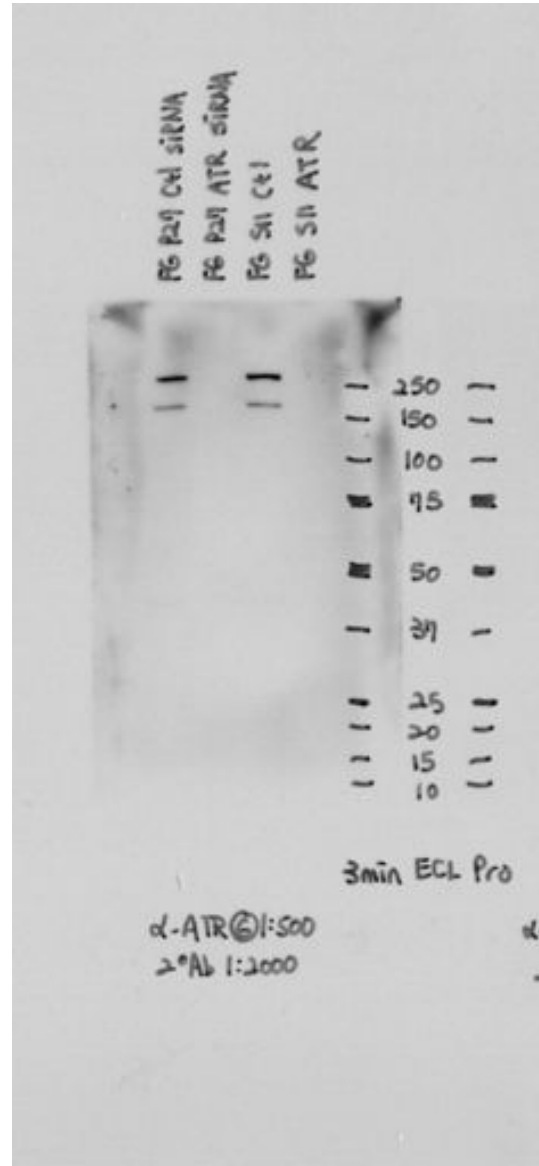
Figure 2a: FG (Ctrl and SLFN11KD) - ATM and ATR siRNA



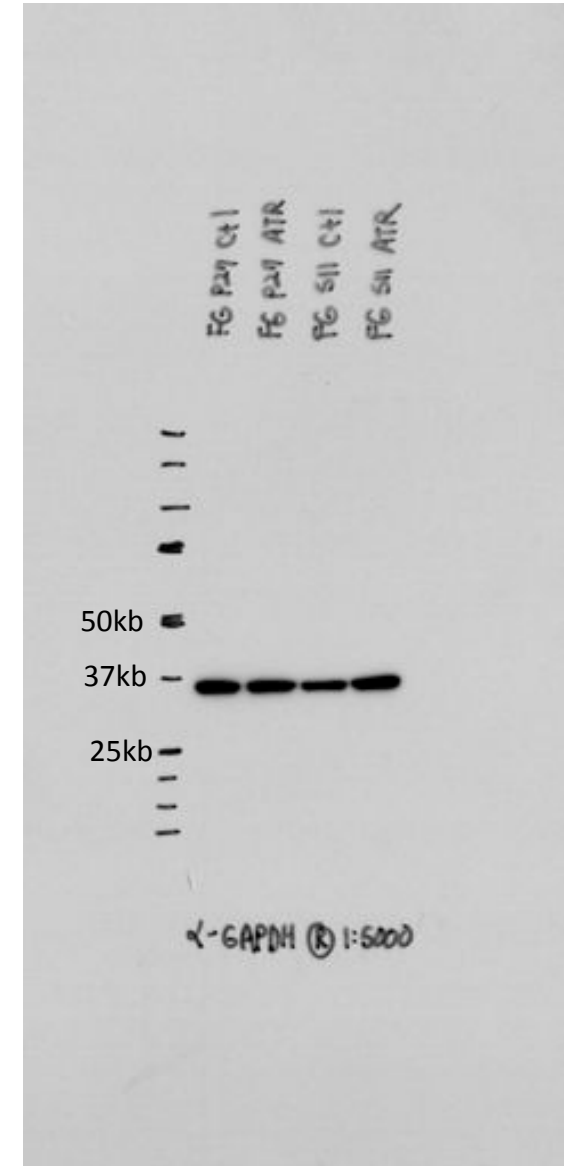
Anti-ATM IB



Anti-GAPDH IB

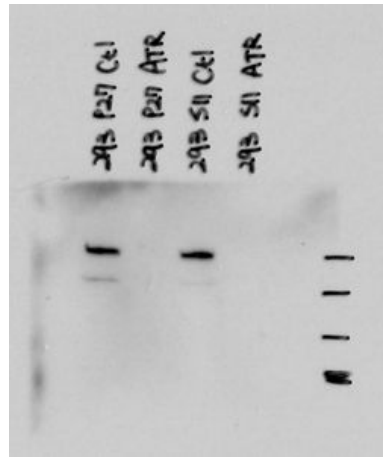


Anti-ATR IB

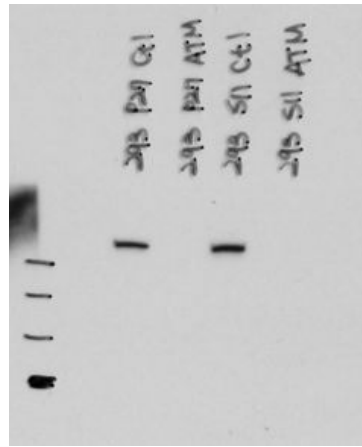


Anti-GAPDH IB

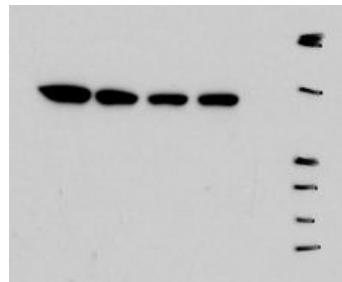
Figure 2c: HEK293 cells (Ctrl and SLFN11KD) - ATM and ATR siRNA



Anti-ATR IB

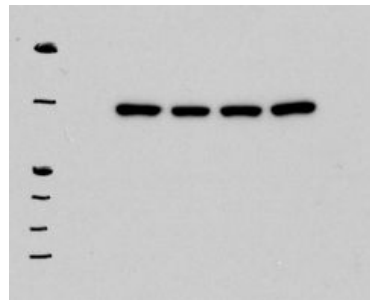


Anti-ATM IB



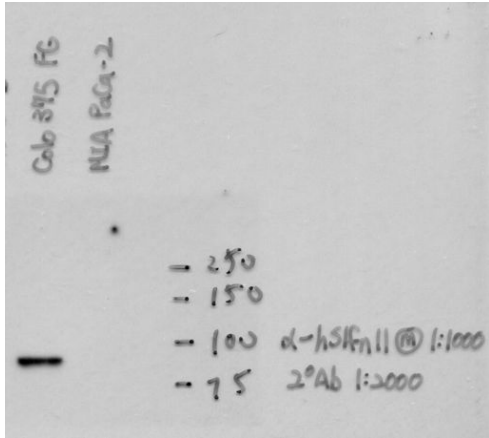
Anti-GAPDH IB

50kb  
37kb  
25kb

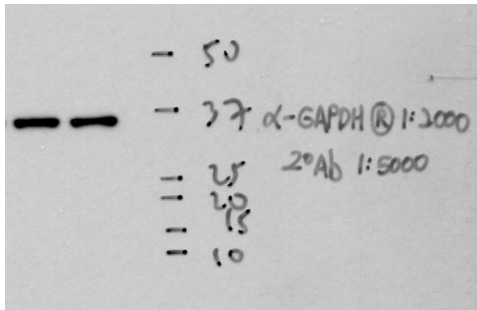


Anti-GAPDH IB

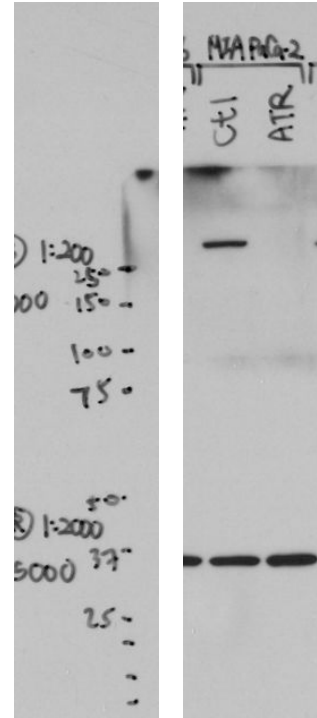
Figure 2e: MIA Paca-2 cells - ATR siRNA



Anti-SLFN11 IB



Anti-GAPDH IB



Anti-ATR IB

Anti-GAPDH IB

Figure 2-i

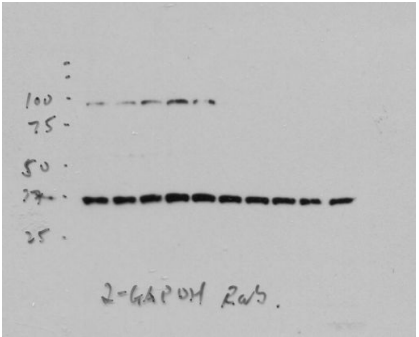
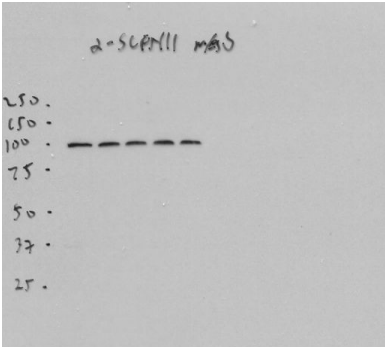
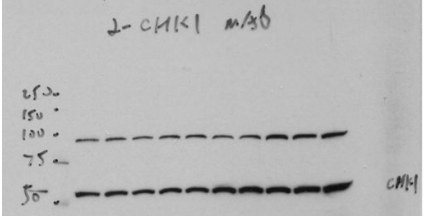
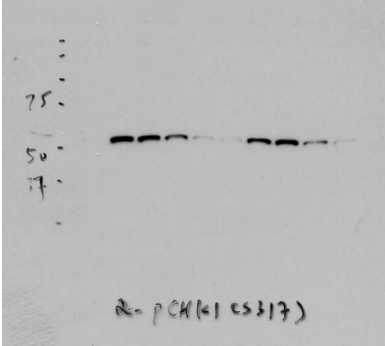


Figure 2-k

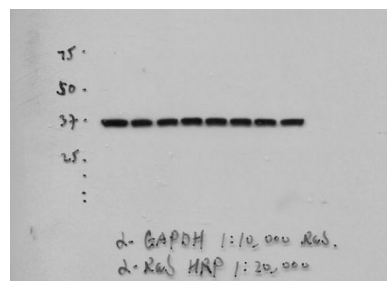
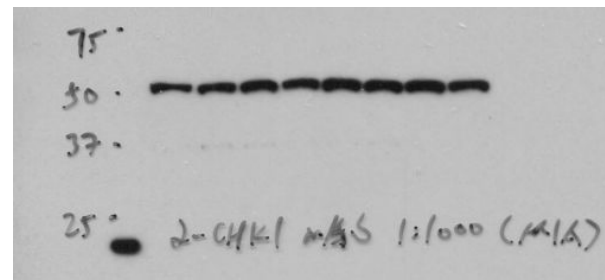
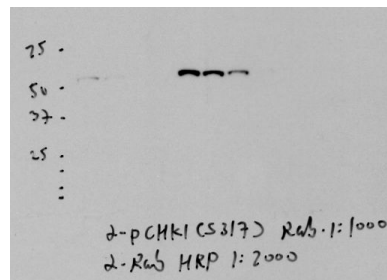
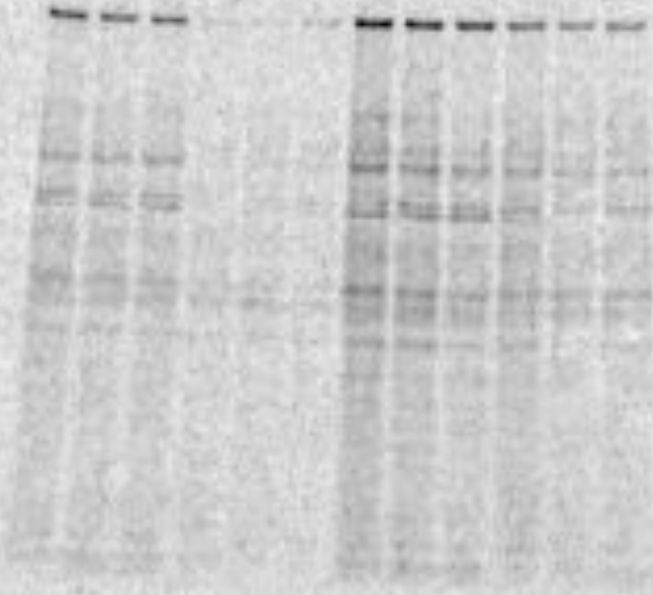
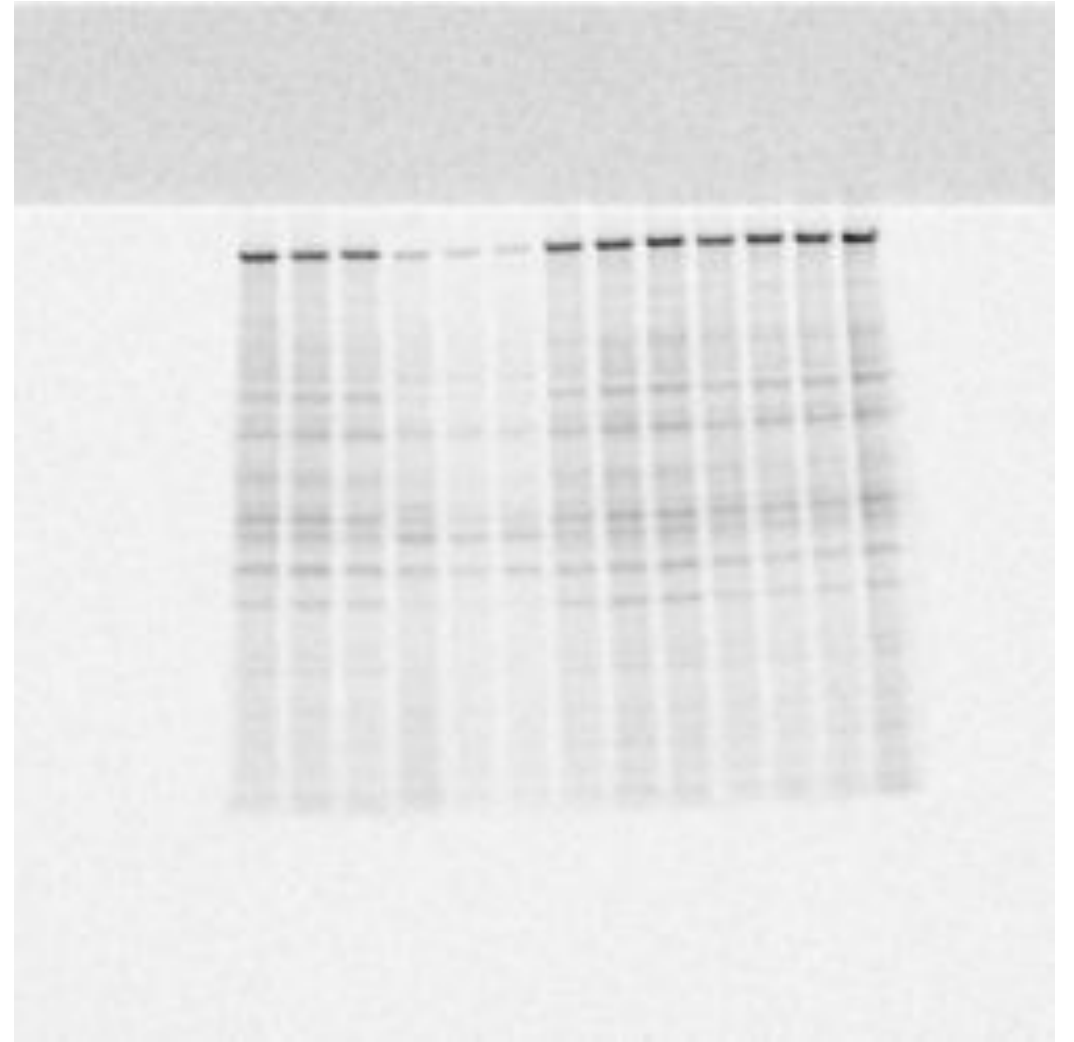


Figure 3a: 293 and FG S35 labeling and pulse-chase experiment: ATR IP



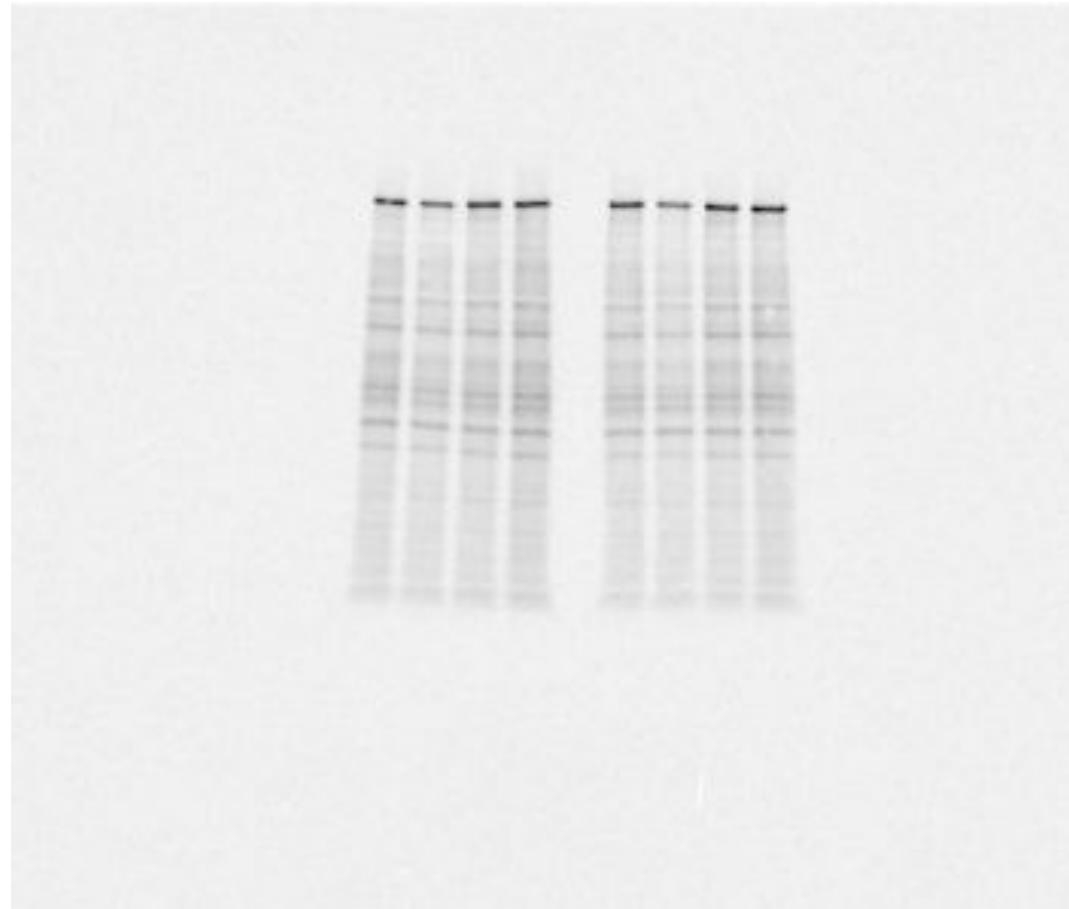
293



FG



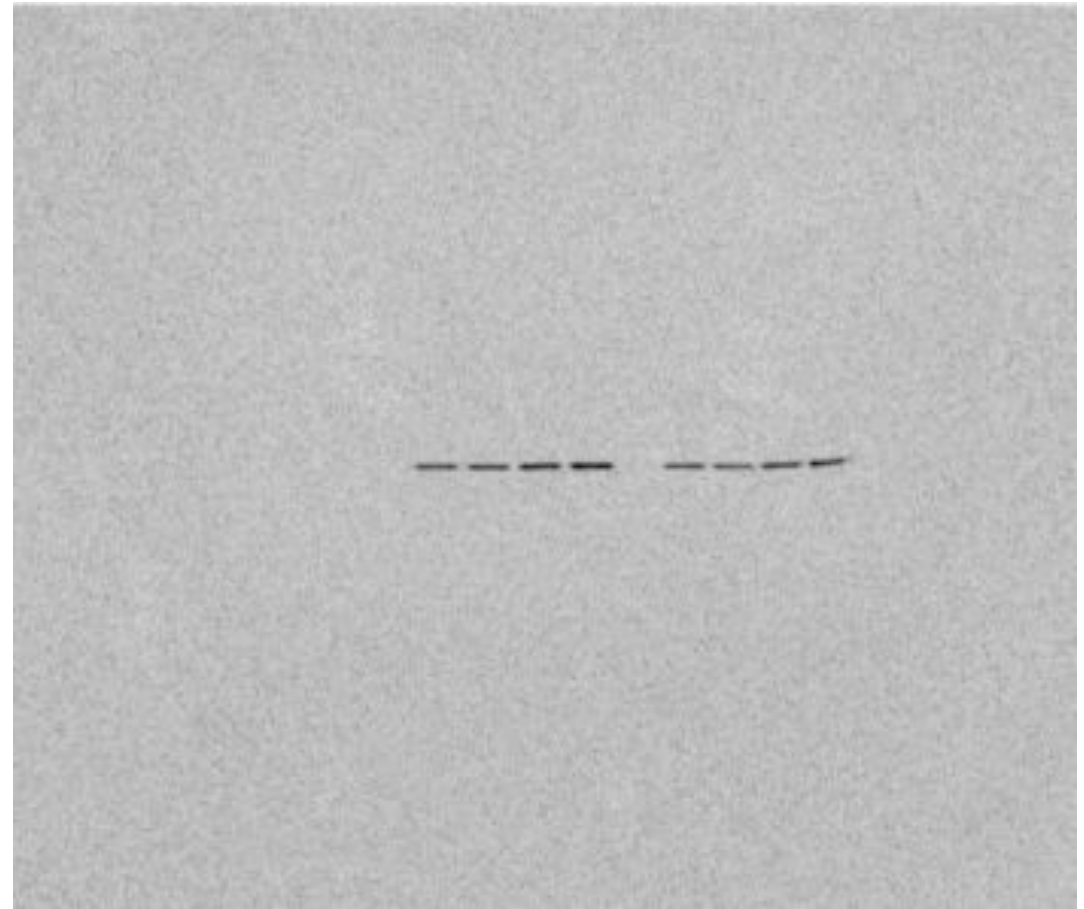
Figure 3b: FG ATR and GAPDH IP CPT Kinetics



3hr CPT

6hr CPT

ATR IP



3hr CPT

6hr CPT

GAPDH IP

Figure 4-b

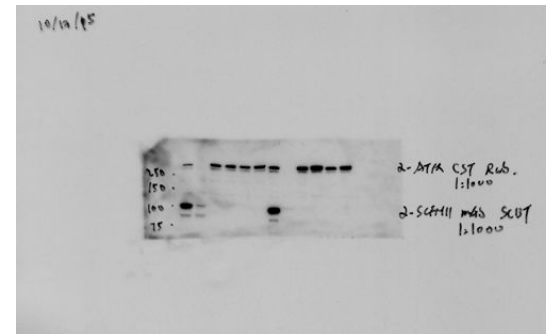
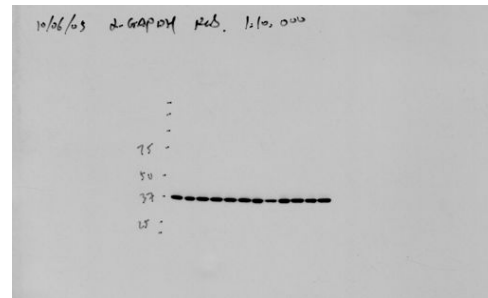
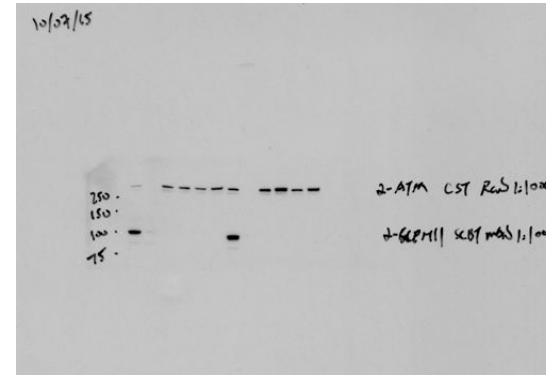
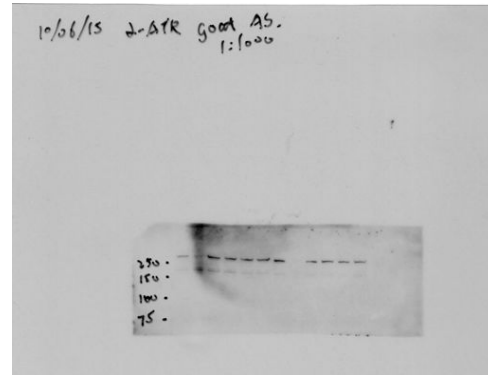
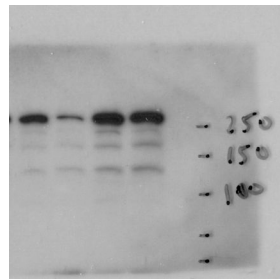
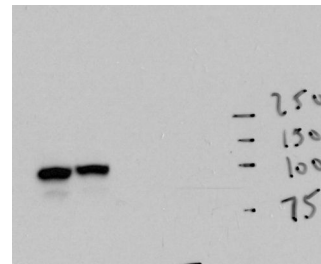


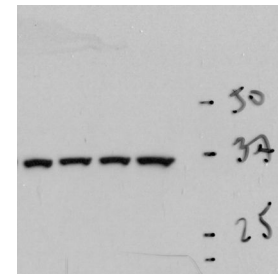
Figure 4-d



anti-ATR IB



anti-SLFN11 IB



anti-GAPDH IB

Figure 6c

Labeling:

3Hr

FG/DMSO  
FG/CPT  
FG/SLFN11KO/DMSO  
FG/SLFN11KO/CPT

6Hr

FG/DMSO  
FG/CPT  
FG/SLFN11KO/DMSO  
FG/SLFN11KO/CPT

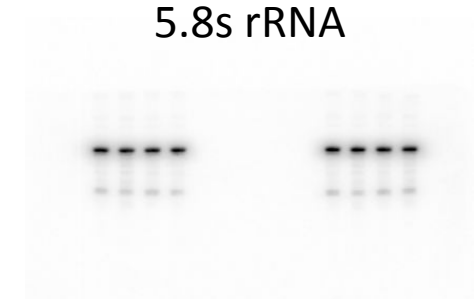
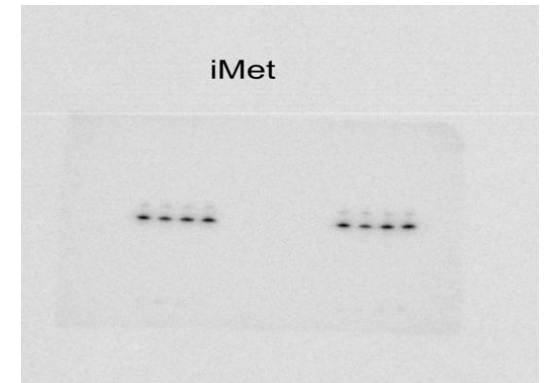
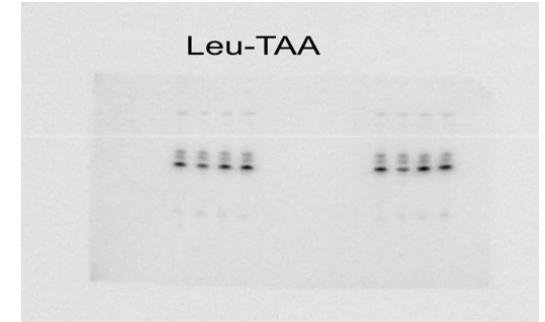
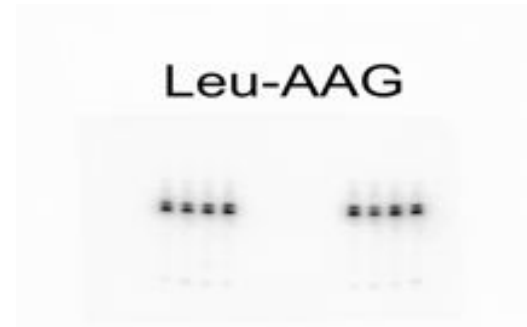
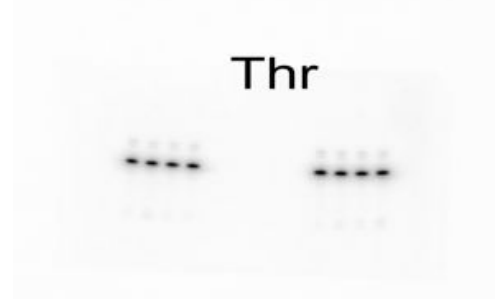
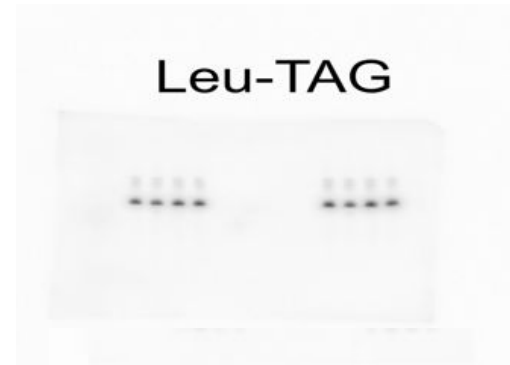
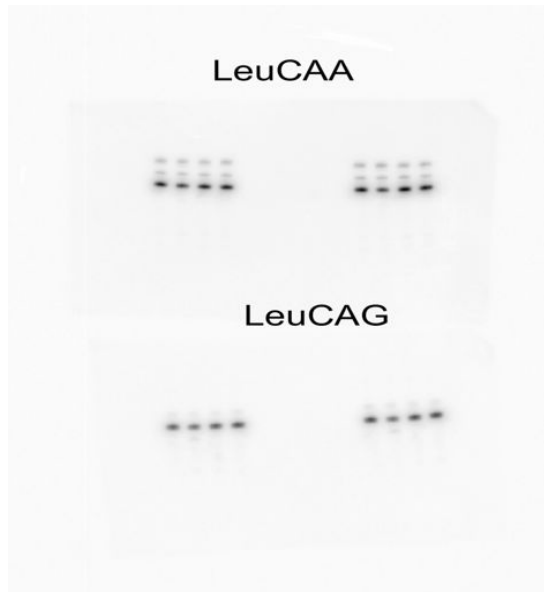


Figure 6c

Labeling:

12Hr

FG/DMSO

FG/CPT

FG/SLFN11KO/DMSO

FG/SLFN11KO/CPT

Leu-CAA



Leu-TAG



Leu-CAG



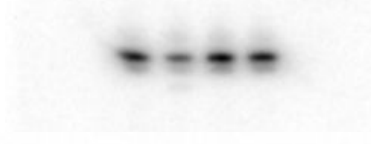
LeuAAG



LeuTAA



SerTGA



Ser-CGA



Ser-AGA



Ser-GCT  
(from 1st blots)



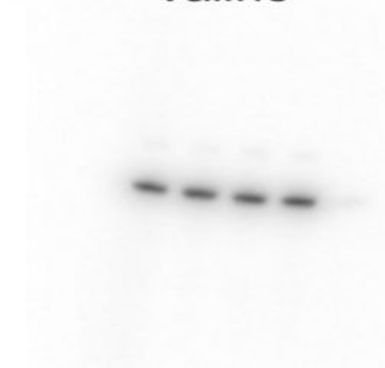
iMet



Threonine



Valine



5.8s rRNA



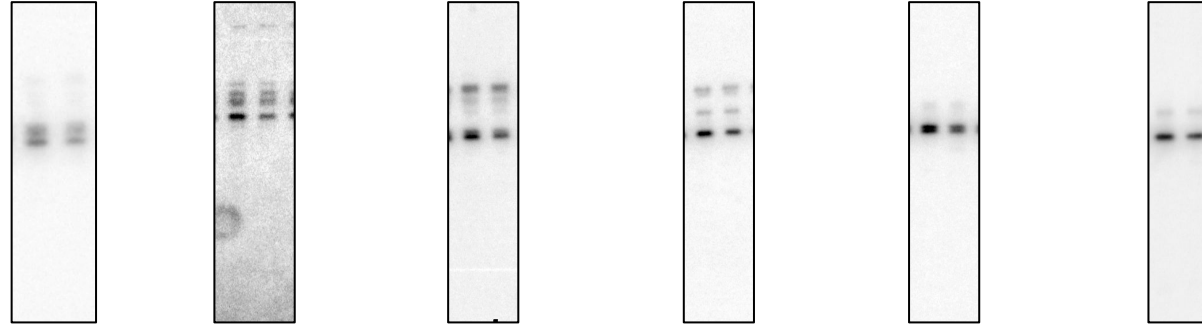
Figure 6d

Labeling:

---

293T/CTRL  
293T/SLFN11

Leu-AAG Leu-TAA Leu-TAG Leu-CAA Leu-CAG Ini-CAT



Ser-GCT Ser-TGA Ser-AGA Ser-CGA VAL-TAC Thr-TGT 5.8s rRNA

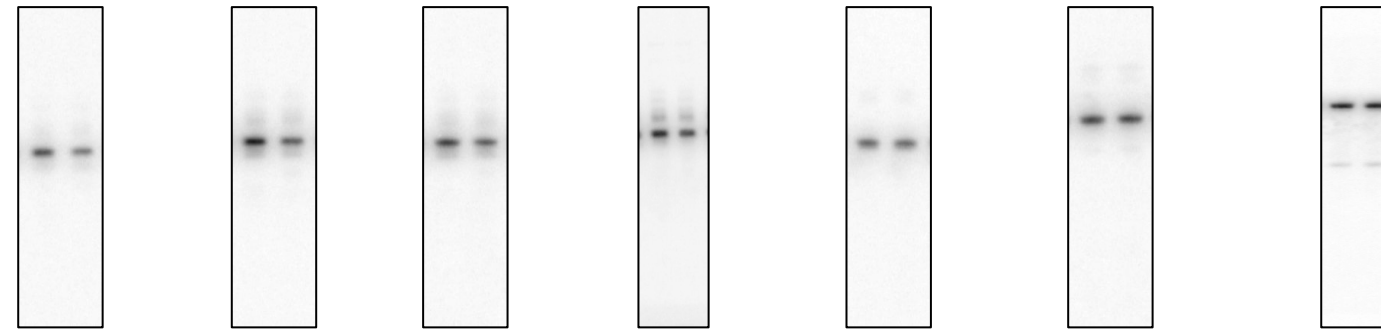


Figure 6e

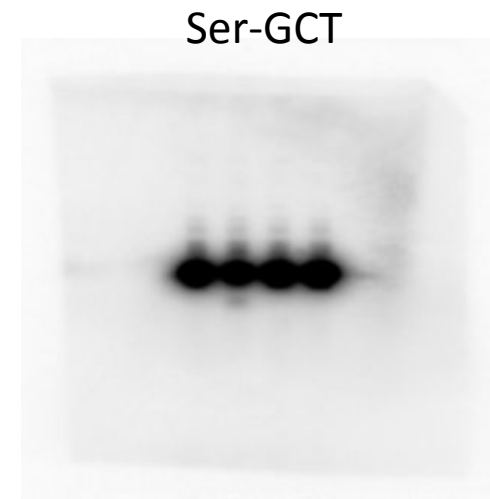
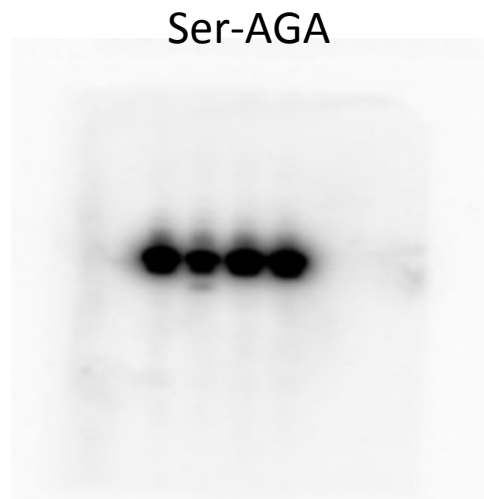
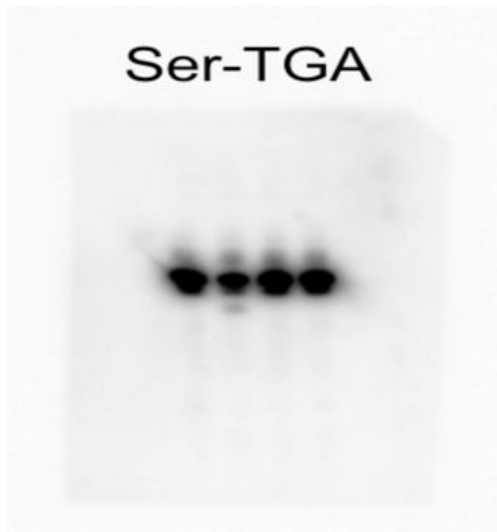
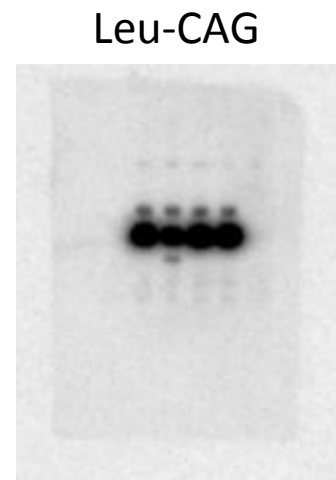
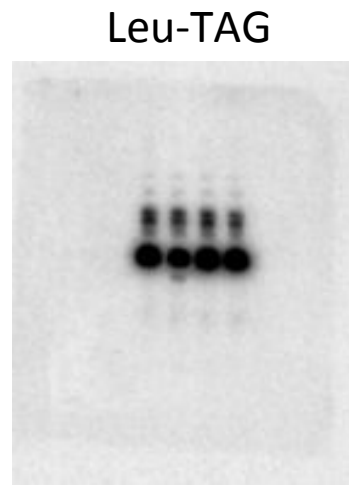
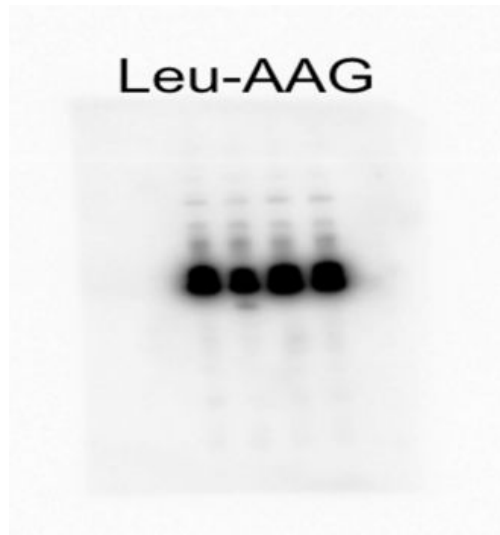
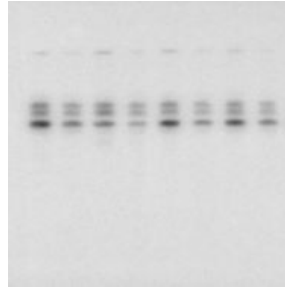




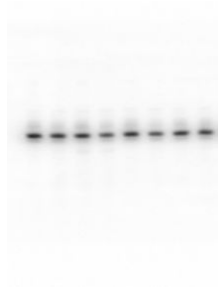


Figure 7-a

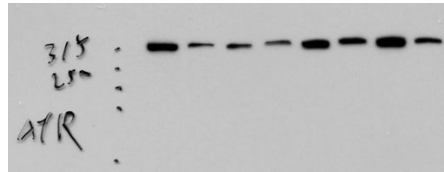
Leu-TAA NB



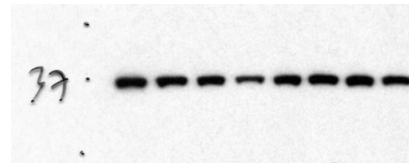
Ser-CGA NB



5.8s rRNA NB



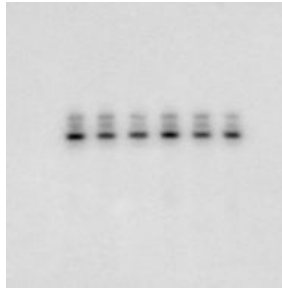
anti-ATR IB



anti-GAPDH IB

Figure 8-a

Leu-TAA NB



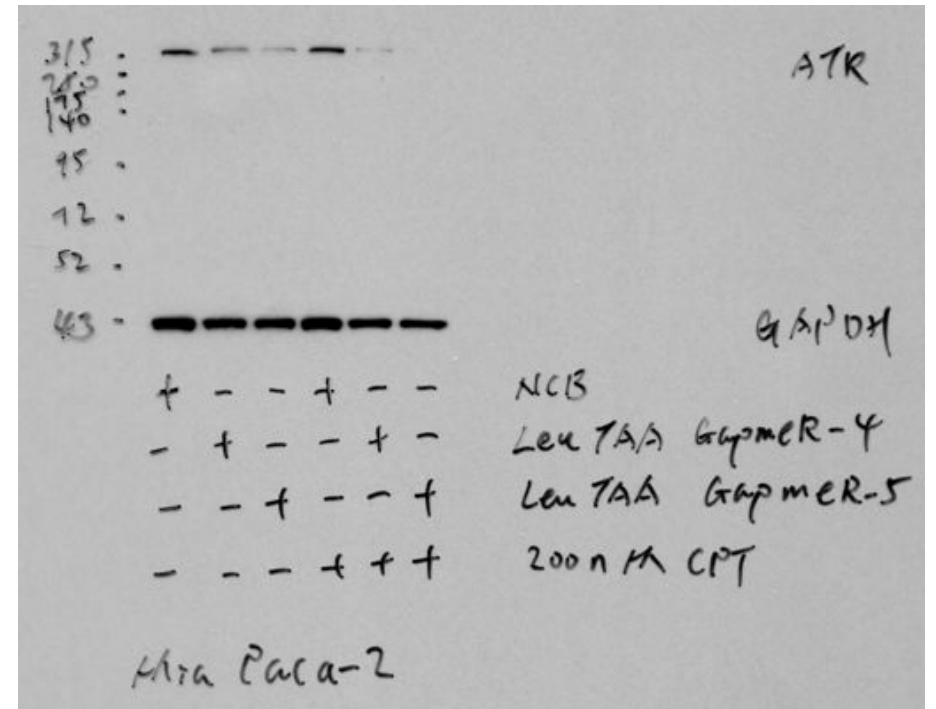
Ser-CGA NB



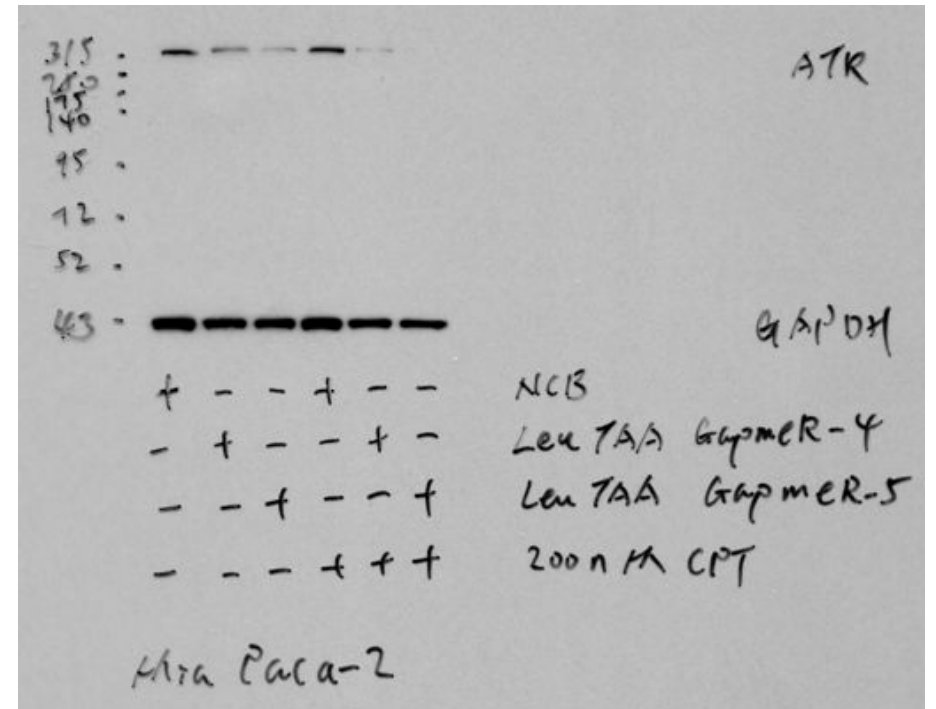
5.8s rRNA NB



anti-ATR IB



anti-GAPDH IB



+	-	-	+	-	-	NCB
-	+	-	-	+	-	Leu TAA GpmR-4
-	-	+	-	-	+	Leu TAA GpmR-5
-	-	-	+	+	+	200 nM CPT

Mia Paca-2