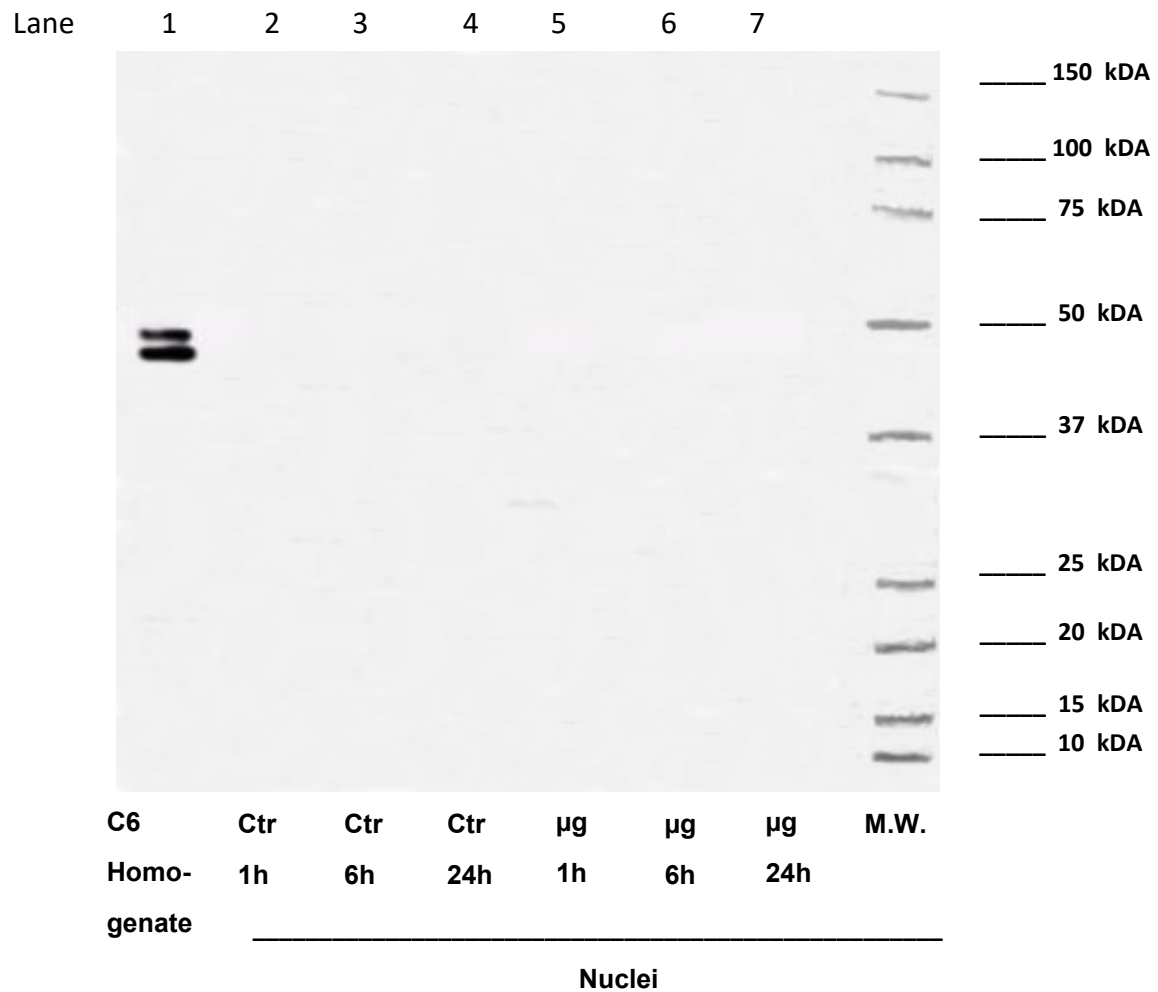


## Western Blot analysis against G protein type alpha



**Supplementary 3.** WB on C6 homogenate (used as positive control) and isolated nuclei of C6 glioma cells. For each panel, the samples loaded were: lane 1, C6 glioma cells homogenate (used as control); lane 2, nuclei from untreated C6 glioma cells (time 1 hour); lane 3, nuclei from untreated C6 glioma cells (time 6 hours); lane 4, nuclei from untreated C6 glioma cells (time 24 hours); lane 5, nuclei from C6 glioma cells treated with microgravity ( $\mu\text{g}$ ) for 1 hour; lane 6, nuclei from C6 glioma cells treated with  $\mu\text{g}$  for 6 hours; lane 7, nuclei from C6 glioma cells treated with  $\mu\text{g}$  for 24 hours.