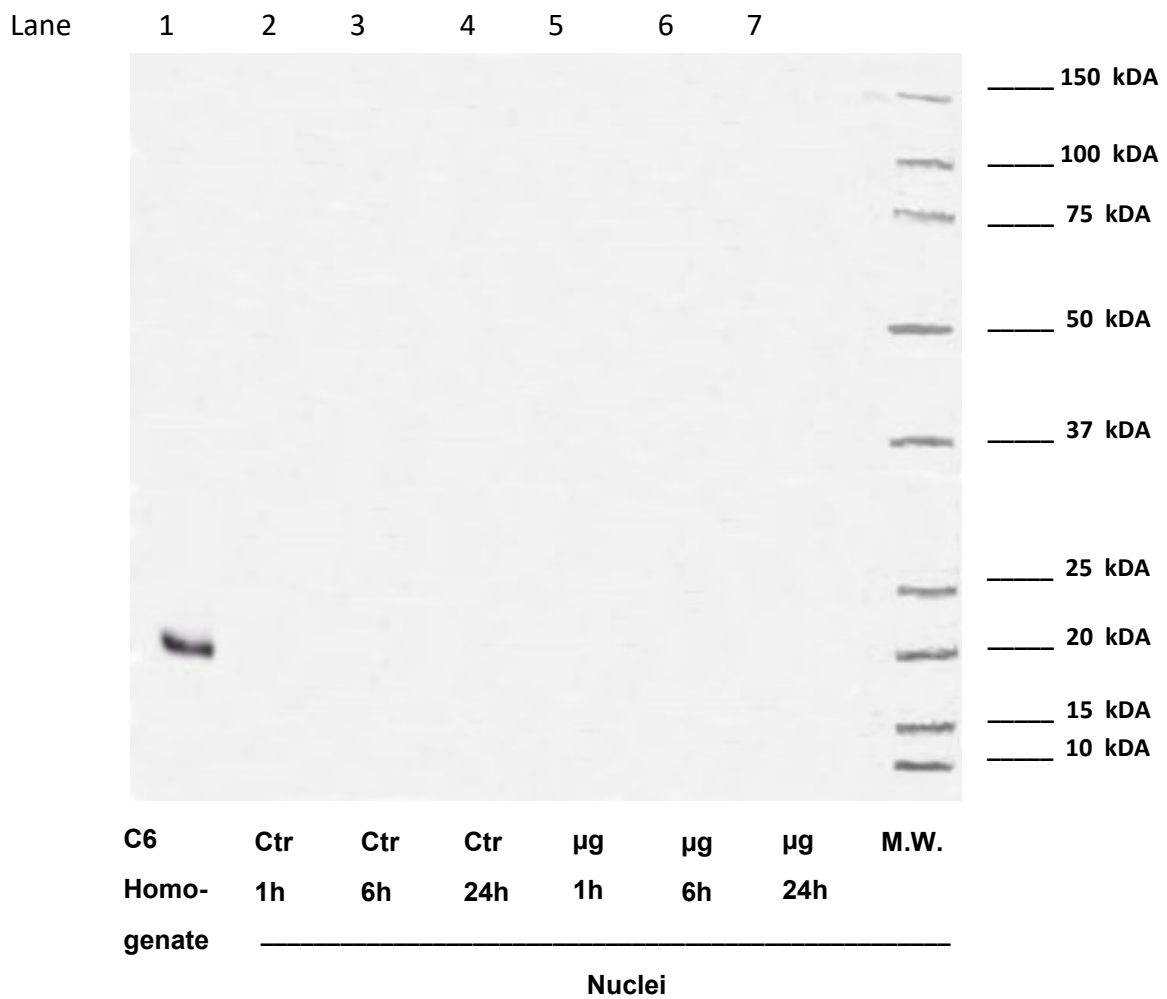


Western Blot analysis against Translocase of the Inner Membrane



Supplementary 4. WB on C6 homogenate (used as positive control) and isolated nuclei of C6 glioma cells. For each panel, the samples loaded were: lane 1, C6 glioma cells homogenate (used as control); lane 2, nuclei from untreated C6 glioma cells (time 1 hour); lane 3, nuclei from untreated C6 glioma cells (time 6 hours); lane 4, nuclei from untreated C6 glioma cells (time 24 hours); lane 5, nuclei from C6 glioma cells treated with microgravity (μg) for 1 hour; lane 6, nuclei from C6 glioma cells treated with μg for 6 hours; lane 7, nuclei from C6 glioma cells treated with μg for 24 hours.