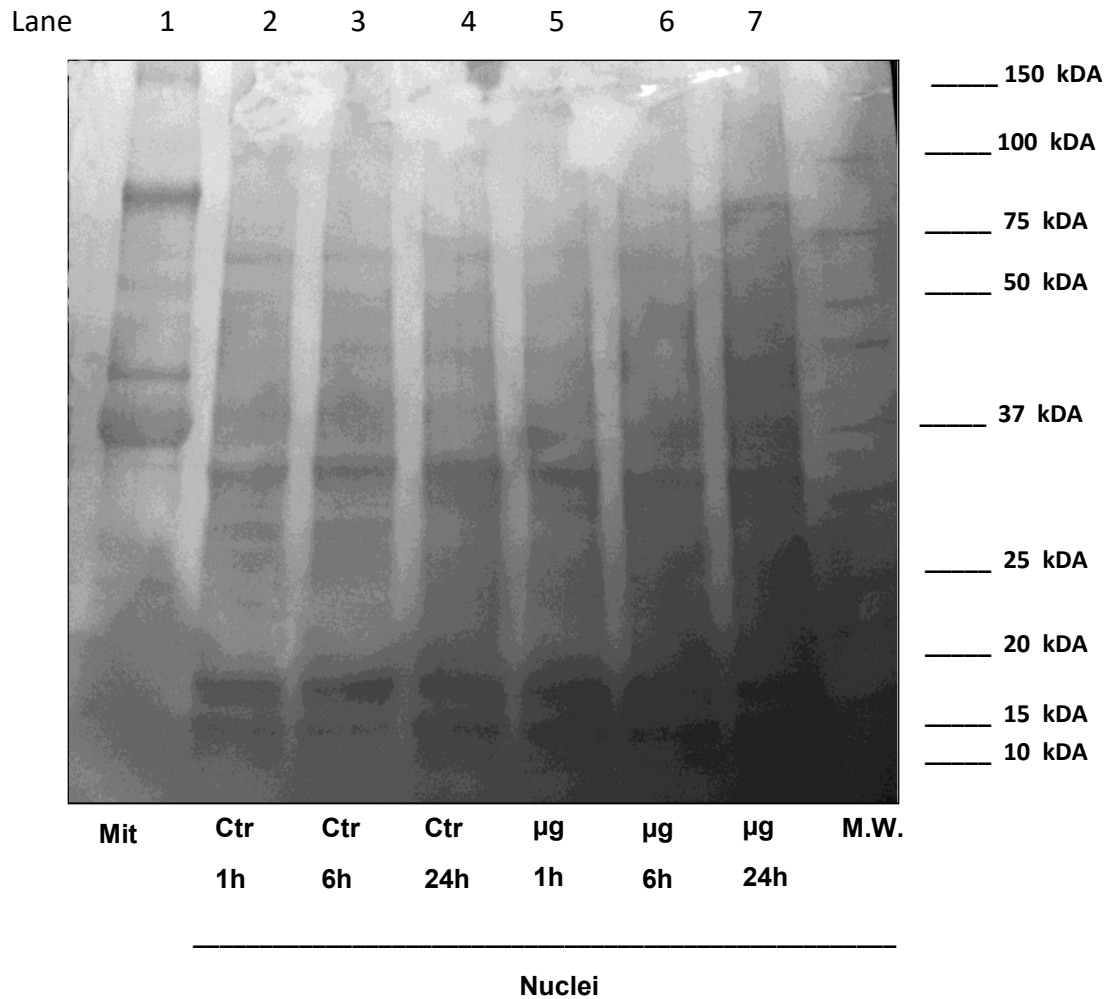


Protein pattern stained by Red Ponceau



Supplementary 6. WB analyses on mitochondria enriched fraction (used as positive control) and isolated nuclei of C6 glioma cells. For each panels, the samples loaded were: lane 1, mitochondria enriched fraction (Mit); lane 2, nuclei from control C6 glioma cells (time 1 hour); lane 3, nuclei from control C6 glioma cells (time 6 hours); lane 4, nuclei from control C6 glioma cells (time 24 hours); lane 5, nuclei from C6 glioma cells treated with μg for 1 hour; lane 6, nuclei from C6 glioma cells treated with μg 6 hours; lane 7, nuclei from C6 glioma cells treated with μg for 24 hours.