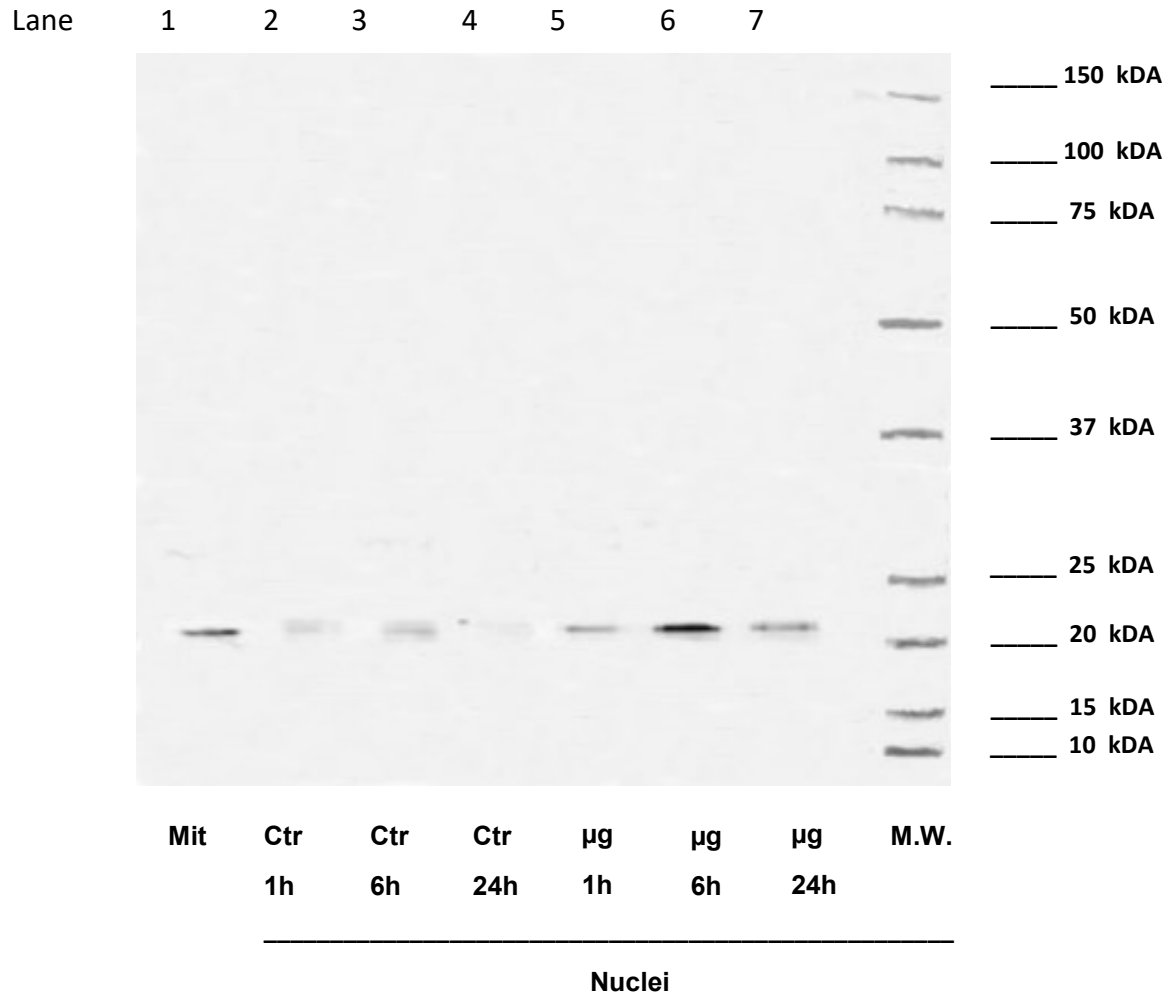


## Western Blot analysis against Bcl-2 protein



**Supplementary 8.** WB analyses on mitochondria enriched fraction (used as positive control) and isolated nuclei of C6 glioma cells. For each panels, the samples loaded were: lane 1, mitochondria enriched fraction (Mit); lane 2, nuclei from control C6 glioma cells (time 1 hour); lane 3, nuclei from control C6 glioma cells (time 6 hours); lane 4, nuclei from control C6 glioma cells (time 24 hours); lane 5, nuclei from C6 glioma cells treated with  $\mu\text{g}$  for 1 hour; lane 6, nuclei from C6 glioma cells treated with  $\mu\text{g}$  6 hours; lane 7, nuclei from C6 glioma cells treated with  $\mu\text{g}$  for 24 hours.