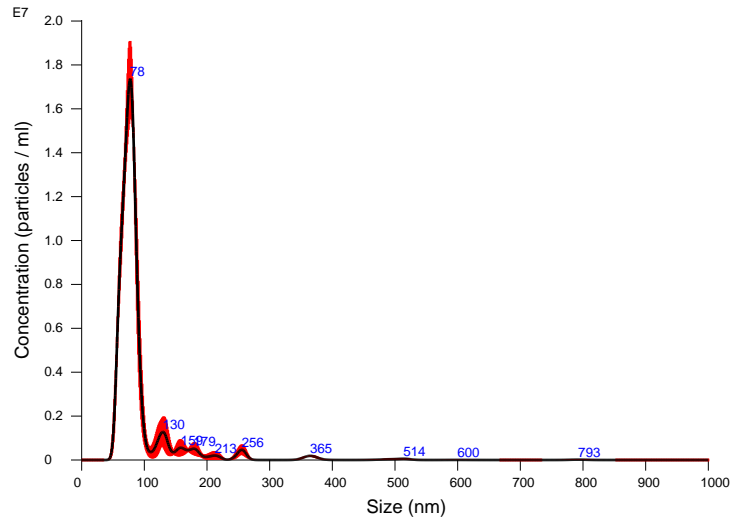


FTLA Concentration / Size graph for Experiment:
74_500_1_



Averaged FTLA Concentration / Size for Experiment:
74_500_1_
Error bars indicate + / - 1 standard error of the mean

Included Files

74_500_1_00
74_500_1_01
74_500_1_02

Details

NTA Version: NTA 3.2 Dev Build 3.2.16
Script Used: SOP Standard Measurement 11-35-16AM 21Mar2017.txt
Time Captured: 13:11:36 21/03/2017
Operator: SN
Pre-treatment:
Sample Name: SJ_74 1:500 in PBS no filter
Diluent: PBS
Remarks: installation with 488 laser SJ_74 1:500 in PBS no filter

Capture Settings

Camera Type: sCMOS
Laser Type: Blue488
Camera Level: 12
Slider Shutter: 1200
Slider Gain: 146
FPS: 25.0
Number of Frames: 749
Temperature: 22.7 °C
Viscosity: (Water) 0.938 - 0.938 cP
Dilution factor: Dilution not recorded
Syringe Pump Speed: 50

Analysis Settings

Detect Threshold: 4
Blur Size: Auto
Max Jump Distance: Auto: 15.3 - 16.1 pix

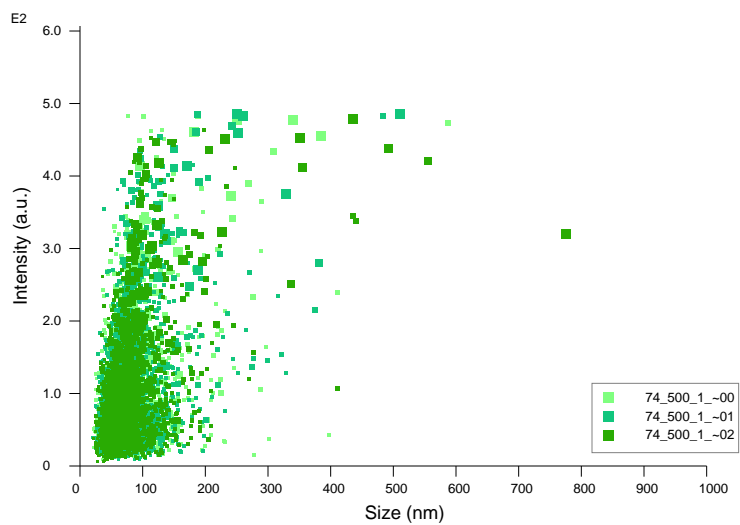
Results

Stats: Merged Data

Mean: 91.1 nm
Mode: 77.4 nm
SD: 57.0 nm
D10: 60.2 nm
D50: 76.5 nm
D90: 129.3 nm

Stats: Mean +/- Standard Error

Mean: 91.1 +/- 2.0 nm
Mode: 77.9 +/- 0.6 nm
SD: 56.3 +/- 6.7 nm
D10: 60.2 +/- 0.2 nm
D50: 76.6 +/- 0.7 nm
D90: 119.9 +/- 11.2 nm
Concentration (Upgrade): 5.56e+008 +/- 3.87e+006 particles/ml
68.7 +/- 0.6 particles/frame
68.7 +/- 0.4 centres/frame



Intensity / Size graph for Experiment:
74_500_1_