

## Data Supplement Supplementary Online Content

Huded CP, Tuzcu EM, Krishnaswamy A, et al. Association between transcatheter aortic valve replacement and early postprocedural stroke. *JAMA*. doi:10.1001/jama.2019.7525

**eFigure 1.** Study Population

**eFigure 2.** TAVR Access Type by Year

**eFigure 3.** 30-Day Neurologic Events Stratified by Access Type

**eFigure 4.** 30-Day Stroke by Year Stratified by Access Type

**eTable 1.** TVT Registry Neurologic Endpoint Definitions

**eTable 2.** Variable List for Analysis Purpose

**eTable 3.** 30-Day Stroke Rates in Key Subgroups

**eTable 4.** 30-Day Neurologic Event Rates by Year by Year

**eTable 5.** 30-Day Stroke Rates by Year Stratified by Access Type

**eTable 6.** Adjudication of Neurologic Events and Relation to Health Status

**eTable 7.** Characteristics of Propensity Score Matched Patients on Dual Antiplatelet Therapy (Femoral Cohort)

**eTable 8.** Characteristics of Propensity Score Matched Patients on Oral Anticoagulant Therapy (Femoral Cohort)

**eTable 9.** Characteristics of Propensity Score Matched Patients on Dual Antiplatelet Therapy vs. Oral Anticoagulant Therapy (Femoral Cohort)

**eTable 10.** Characteristics of Propensity Score Matched Patients on Dual Antiplatelet Therapy (Non-femoral Cohort)

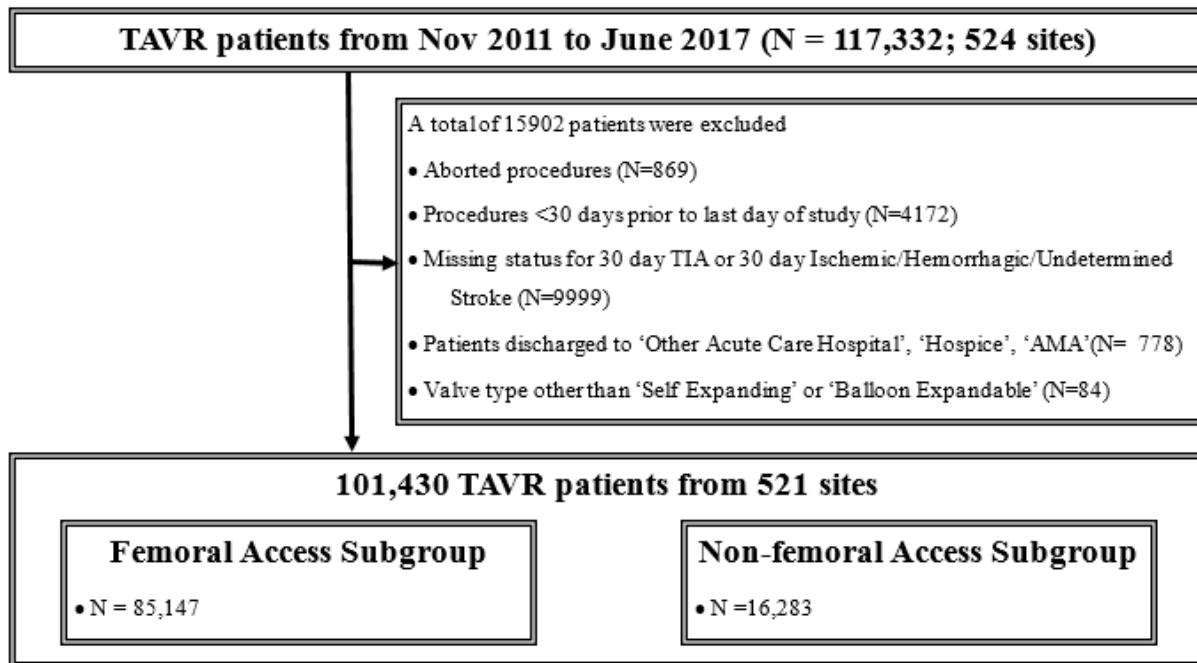
**eTable 11.** Characteristics of Propensity Score Matched Patients on Oral Anticoagulant Therapy (Non-femoral Cohort)

**eTable 12.** Characteristics of Propensity Score Matched Patients on Dual Antiplatelet Therapy vs. Oral Anticoagulant Therapy (Non-femoral Cohort)

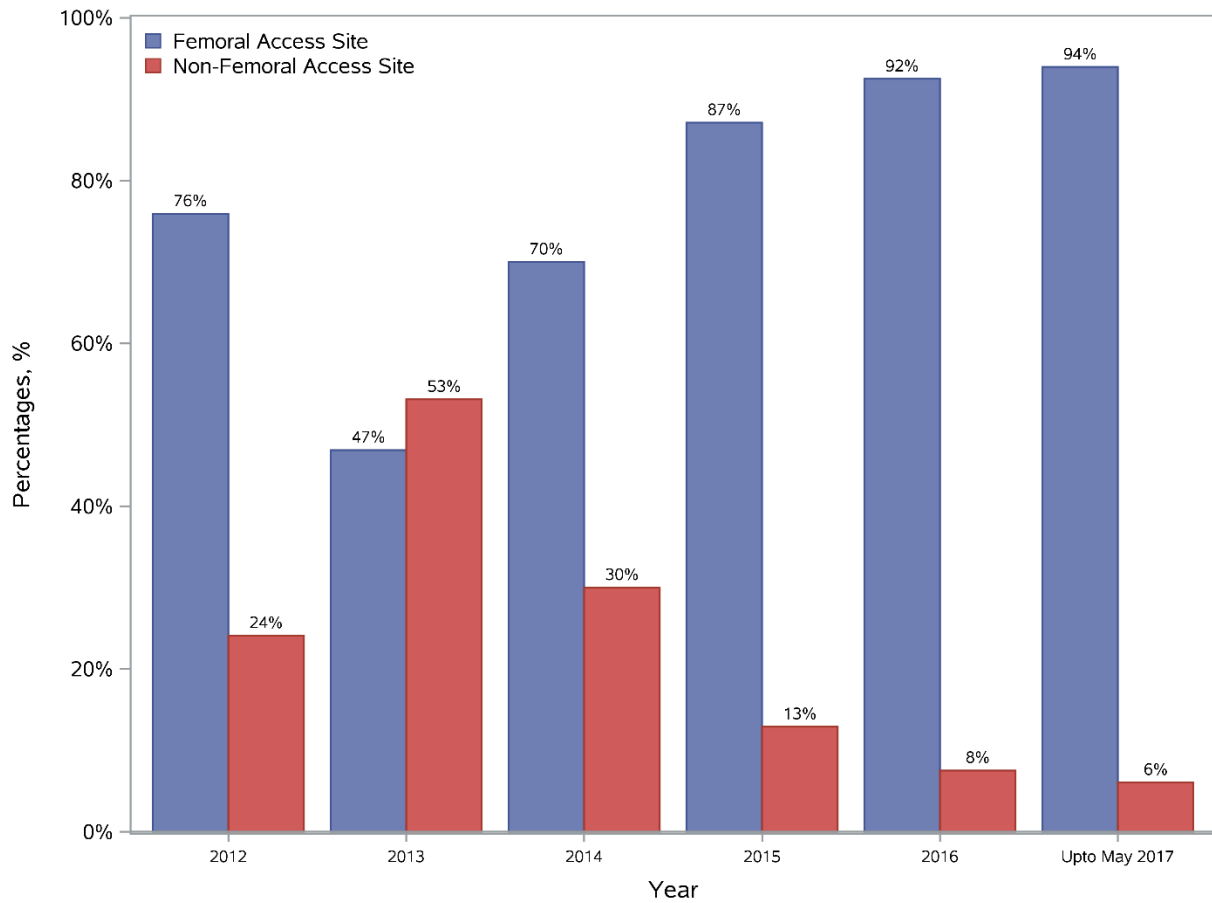
**eTable 13.** Propensity Matched Neurologic Outcomes (Femoral Cohort)

**eTable 14.** Propensity Matched Neurologic Outcomes (Non-femoral Cohort)

This supplementary material has been provided by the authors to give readers additional information about their work.

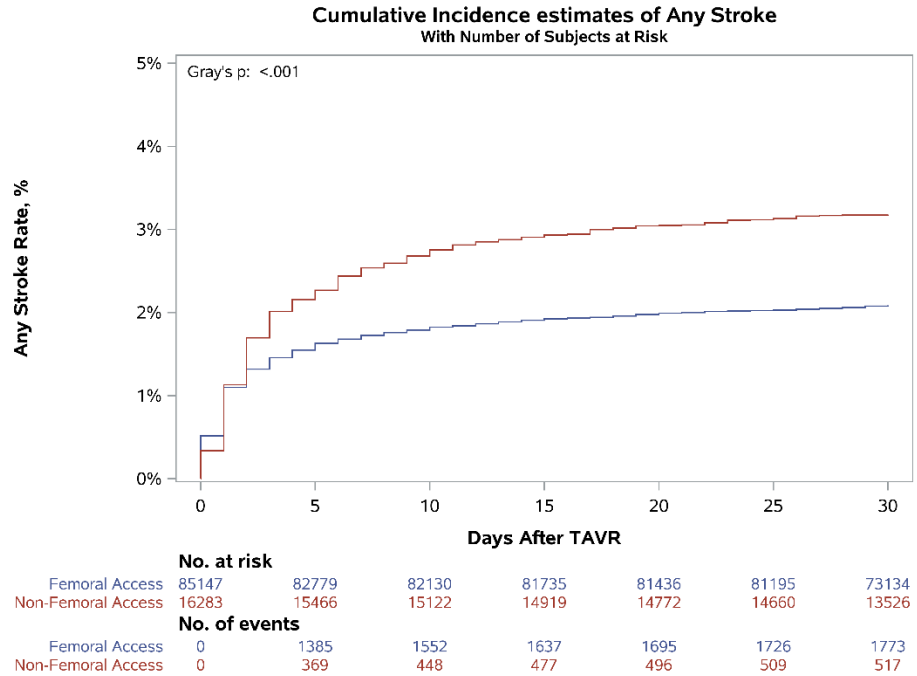
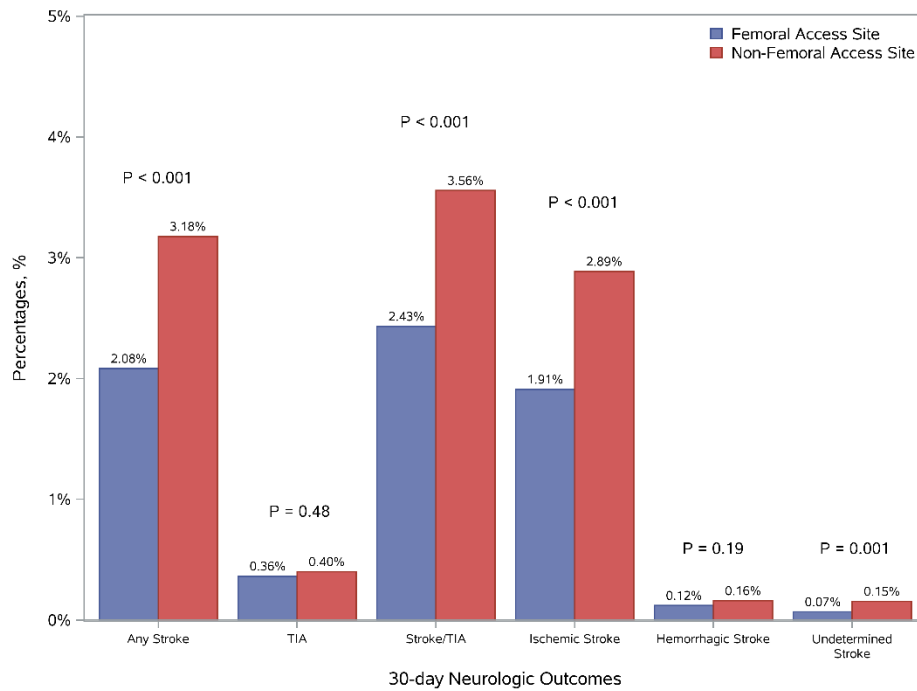
**eFigure 1. Study Population**

Inclusion and exclusion criteria for the study are shown. Non-femoral access included trans-aortic, left ventricular apical, axillary, subclavian, iliac, transeptal, and carotid TAVR procedures. AMA = against medical advice. TAVR = transcatheter aortic valve replacement. TIA = transient ischemic attack.

**eFigure 2. TAVR Access Type by Year**

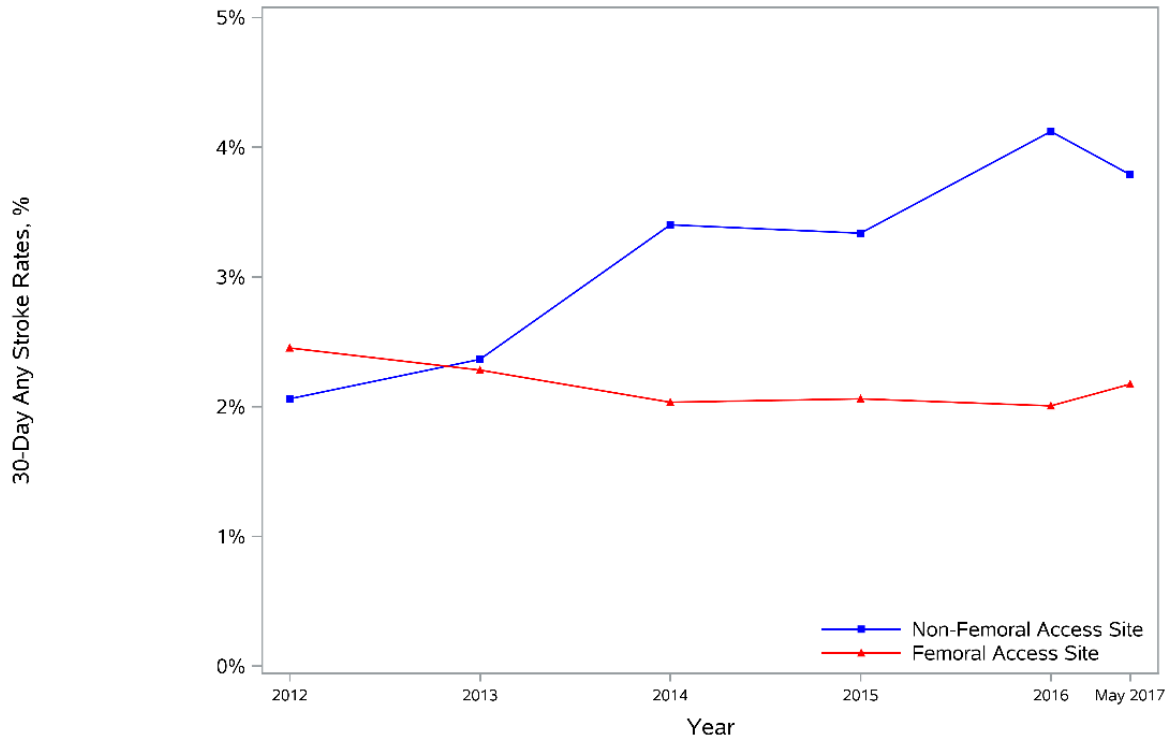
During the study period, the proportion of cases performed with femoral access increased, and femoral TAVR constituted >90% of the study population in 2016-2017. TAVR = transcatheter aortic valve replacement.

**eFigure 3A and 3B. 30-Day Neurologic Events Stratified by Access Type**



(A) Crude neurologic event rates and (B) cumulative incidence of any stroke within 30-day s of TAVR stratified by access type are shown. TAVR = transcatheter aortic valve replacement. TIA = transient ischemic attack.

**eFigure 4. 30-Day Stroke by Year Stratified by Access Type**



	Cohort Size (N)					
All patients	4030	8042	14895	23019	33958	17486
	Frequency (n)					
Non-Femoral Access Site	971	4272	4469	2967	2548	1056
Femoral Access Site	3059	3770	10426	20052	31410	16430

The annual rate of 30-day stroke in femoral and non-femoral access TAVR is shown.

**eTable 1. TVT Registry Neurologic Endpoint Definitions**

<b>Endpoint</b>	<b>Definition</b>
Stroke	<p>A stroke is defined as an acute episode of a focal or global neurological deficit lasting <math>\geq 24</math> hours (without another readily identifiable non-stroke cause for the clinical presentation) with at least one of the following:</p> <ol style="list-style-type: none"> <li>change in level of consciousness, hemiplegia, hemiparesis, numbness, or sensory loss affecting one side of the body,</li> <li>dysphagia or aphagia, hemianopsia, amaurosis fugax</li> <li>other neurological signs or symptoms consistent with stroke</li> </ol> <p>OR <math>&lt; 24</math> h (with at least one of A-C above) if available neuroimaging documents a new hemorrhage or infarct</p> <p>OR the neurological deficit results in death (with at least one of A-C above)</p>
Ischemic stroke subtype	An acute episode of focal cerebral, spinal, or retinal dysfunction caused by infarction of the central nervous system tissue. This is usually due to thrombus or embolus (and not primarily due to hemorrhage). Hemorrhagic transformation may be a consequence of ischemic stroke. In this situation, the stroke should be recorded as an ischemic stroke with hemorrhagic transformation rather than a hemorrhagic event
Hemorrhagic stroke subtype	An acute episode of focal or global cerebral or spinal dysfunction caused by intraparenchymal, intraventricular, or subarachnoid hemorrhage. Evidence should include either imaging (CT, MRI), lumbar puncture, neurosurgery, or autopsy.
Undetermined stroke subtype	A stroke may be classified as undetermined if there is insufficient information to allow categorization as ischemic or hemorrhagic.
Transient ischemic attack	Duration of a focal or global neurological deficit $< 24$ h (see 1.A – 1.C above), any variable neuroimaging not demonstrating new hemorrhage or infarct.

**eTable 2. Variable List for Analysis Purpose**

Variable	Level	Overall (N=101430)		30 day Stroke = No (N=99140)		30 day Stroke = Yes (N=2290)		P-value+
<b>Access Site</b>								
TVT Access Site	Femoral	85147	83.9	83374	84.1	1773	77.4	<.001
	Transapical/Transaortic	12949	12.8	12568	12.7	381	16.6	
	Other	3334	3.3	3198	3.2	136	5.9	
<b>A. Model Variables</b>								
Age*	Median	101430	83.0	99140	82.0	2290	84.0	<.001
	25th		76.0		76.0		78.0	
	75th		87.0		87.0		88.0	
	Min		0.0		0.0		29.0	
	Max		116.0		116.0		100.0	
	Missing(%)		0.0		0.0		0.0	
Body Surface Area*	Median	101324	1.9	99036	1.9	2288	1.8	<.001
	25th		1.7		1.7		1.6	
	75th		2.0		2.0		2.0	
	Min		0.6		0.6		0.8	
	Max		4.1		4.1		3.0	
	Missing(%)		0.1		0.1		0.1	
Gender	Missing	13	0.0	13	0.0	0	0.0	<.001
	Male	53620	52.9	52581	53.0	1039	45.4	
	Female	47797	47.1	46546	46.9	1251	54.6	
Race White	No	6315	6.2	6152	6.2	163	7.1	0.074
	Yes	95115	93.8	92988	93.8	2127	92.9	
LVEF*	Median	100440	58.0	98162	58.0	2278	59.0	0.001
	25th		48.0		48.0		50.0	
	75th		64.0		64.0		65.0	

	Min		3.0		3.0		10.0	
	Max		99.0		99.0		90.0	
	Missing(%)		1.0		1.0		0.5	
Hemoglobin (g/dL)*	Median	101149	11.9	98863	11.9	2286	11.9	0.386
	25th		10.6		10.6		10.6	
	75th		13.2		13.2		13.1	
	Min		0.1		0.1		5.4	
	Max		48.2		48.2		37.3	
	Missing(%)		0.3		0.3		0.2	
Platelet Count ( $\mu$ L)*	Median	100828	193000	98549	193000	2279	200000	<.001
	25th		154000		154000		159000	
	75th		239000		239000		247000	
	Min		1000.0		1000.0		1430.0	
	Max		900000		900000		828000	
	Missing(%)		0.6		0.6		0.5	
GFR	Missing	259	0.3	252	0.3	7	0.3	<.001
	GFR >60	52176	51.4	51087	51.5	1089	47.6	
	GFR 30 - 60	39888	39.3	38934	39.3	954	41.7	
	GFR < 30	5058	5.0	4901	4.9	157	6.9	
	On Dialysis	4049	4.0	3966	4.0	83	3.6	
Left Main Stenosis >=50%	Missing	997	1.0	977	1.0	20	0.9	0.988
	No	90557	89.3	88510	89.3	2047	89.4	
	Yes	9876	9.7	9653	9.7	223	9.7	
Proximal LAD >=70%	Missing	1069	1.1	1048	1.1	21	0.9	0.830
	No	81252	80.1	79419	80.1	1833	80.0	
	Yes	19109	18.8	18673	18.8	436	19.0	
Prior MI	Missing	214	0.2	211	0.2	3	0.1	0.561
	No	76819	75.7	75095	75.7	1724	75.3	
	Yes	24397	24.1	23834	24.0	563	24.6	
Endocarditis	Missing	144	0.1	142	0.1	2	0.1	0.040
	No	100341	98.9	98065	98.9	2276	99.4	



	Yes	945	0.9	933	0.9	12	0.5	
Prior Stroke/TIA	Missing	241	0.2	240	0.2	1	0.0	<.001
	No	82404	81.2	80722	81.4	1682	73.4	
	Yes	18785	18.5	18178	18.3	607	26.5	
Carotid Stenosis	Missing	1276	1.3	1255	1.3	21	0.9	<.001
	None	62434	61.6	61089	61.6	1345	58.7	
	Right	6262	6.2	6095	6.1	167	7.3	
	Left	5863	5.8	5698	5.7	165	7.2	
	Both	8348	8.2	8127	8.2	221	9.7	
	Not assessed	17247	17.0	16876	17.0	371	16.2	
Peripheral Arterial Disease	Missing	96	0.1	95	0.1	1	0.0	<.001
	No	71246	70.2	69748	70.4	1498	65.4	
	Yes	30088	29.7	29297	29.6	791	34.5	
Current/Recent Smoker	Missing	88	0.1	86	0.1	2	0.1	0.192
	No	95638	94.3	93493	94.3	2145	93.7	
	Yes	5704	5.6	5561	5.6	143	6.2	
Diabetes Mellitus	Missing	104	0.1	104	0.1	0	0.0	0.670
	No	63219	62.3	61800	62.3	1419	62.0	
	Yes	38107	37.6	37236	37.6	871	38.0	
NYHA Class w/in 2 Weeks	Missing	771	0.8	751	0.8	20	0.9	0.078
	Class I/II/III	83506	82.3	81654	82.4	1852	80.9	
	Class IV	17153	16.9	16735	16.9	418	18.3	
Atrial Fibrillation /Flutter	Missing	145	0.1	142	0.1	3	0.1	0.493
	No	60889	60.0	59530	60.0	1359	59.3	
	Yes	40396	39.8	39468	39.8	928	40.5	
Conduction Defect	Missing	488	0.5	478	0.5	10	0.4	0.148
	No	64558	63.6	63067	63.6	1491	65.1	
	Yes	36384	35.9	35595	35.9	789	34.5	
Chronic Lung	Missing	565	0.6	556	0.6	9	0.4	0.245

Disease	None/Mild/Moderate	88073	86.8	86063	86.8	2010	87.8	
	Severe	12792	12.6	12521	12.6	271	11.8	
Home Oxygen	Missing	147	0.1	145	0.1	2	0.1	0.565
	No	90329	89.1	88280	89.0	2049	89.5	
	Yes	10954	10.8	10715	10.8	239	10.4	
Hostile Chest	Missing	146	0.1	144	0.1	2	0.1	0.181
	No	93360	92.0	91234	92.0	2126	92.8	
	Yes	7924	7.8	7762	7.8	162	7.1	
Porcelain Aorta	Missing	185	0.2	180	0.2	5	0.2	0.008
	No	96206	94.8	94062	94.9	2144	93.6	
	Yes	5039	5.0	4898	4.9	141	6.2	
Valve Type	Missing	114	0.1	111	0.1	3	0.1	<.001
	Self Expanding Valve	26249	25.9	25494	25.7	755	33.0	
	Balloon Expandable Valve	75067	74.0	73535	74.2	1532	66.9	
Prior CIED	Missing	65	0.1	65	0.1	0	0.0	<.001
	No	86107	84.9	84086	84.8	2021	88.3	
	Yes	15258	15.0	14989	15.1	269	11.7	
Prior PCI	Missing	158	0.2	154	0.2	4	0.2	0.669
	No	66247	65.3	64742	65.3	1505	65.7	
	Yes	35025	34.5	34244	34.5	781	34.1	
Prior Aortic/Cardiac procedure	Missing	1263	1.2	1237	1.2	26	1.1	<.001
	No	67794	66.8	66150	66.7	1644	71.8	
	Yes	32373	31.9	31753	32.0	620	27.1	
AV Disease Etiology	Missing	211	0.2	208	0.2	3	0.1	0.522
	Other	5322	5.2	5195	5.2	127	5.5	
	Degenerative	95897	94.5	93737	94.6	2160	94.3	
Valve Morphology	Missing	601	0.6	587	0.6	14	0.6	0.518
	Other	10423	10.3	10197	10.3	226	9.9	
	Tricuspid	90406	89.1	88356	89.1	2050	89.5	

Aortic Insufficiency	Missing	693	0.7	681	0.7	12	0.5	0.388
	None/Trace/Trivial/Mild	80872	79.7	79027	79.7	1845	80.6	
	Moderate/Severe	19865	19.6	19432	19.6	433	18.9	
Mitral Insufficiency	Missing	481	0.5	475	0.5	6	0.3	0.955
	None/Trace/Trivial/Mild	73317	72.3	71657	72.3	1660	72.5	
	Moderate/Severe	27632	27.2	27008	27.2	624	27.2	
Tricuspid Insufficiency	Missing	790	0.8	773	0.8	17	0.7	0.006
	None/Trace/Trivial/Mild	77475	76.4	75671	76.3	1804	78.8	
	Moderate/Severe	23165	22.8	22696	22.9	469	20.5	
Acuity	Elective	90059	88.8	88066	88.8	1993	87.0	0.057
	Urgent	7774	7.7	7573	7.6	201	8.8	
	CardioShock/Inotropes/ MechanicalAssit	3142	3.1	3057	3.1	85	3.7	
	Emergency/Salvage/Car diacArrest	455	0.4	444	0.4	11	0.5	
Heart Failure w/in 2 Weeks	Missing	157	0.2	153	0.2	4	0.2	0.131
	No	22445	22.1	21968	22.2	477	20.8	
	Yes	78828	77.7	77019	77.7	1809	79.0	
Hypertension	Missing	65	0.1	65	0.1	0	0.0	0.016
	No	10052	9.9	9859	9.9	193	8.4	
	Yes	91313	90.0	89216	90.0	2097	91.6	
Vascular Disease	Missing	146	0.1	144	0.1	2	0.1	<.001
	No	41229	40.6	40397	40.7	832	36.3	
	Yes	60055	59.2	58599	59.1	1456	63.6	
Anticoagulant Therapy	Missing	4896	4.8	4807	4.8	89	3.9	0.329
	No	66793	65.9	65291	65.9	1502	65.6	
	Yes	29741	29.3	29042	29.3	699	30.5	
Dual Antiplatelet Therapy	Missing	7	0.0	7	0.0	0	0.0	<.001
	No	42963	42.4	41752	42.1	1211	52.9	
	Yes	58460	57.6	57381	57.9	1079	47.1	

Procedure Year*	2012	4030	4.0	3935	4.0	95	4.1	0.228
	2013	8042	7.9	7855	7.9	187	8.2	
	2014	14895	14.7	14531	14.7	364	15.9	
	2015	23019	22.7	22507	22.7	512	22.4	
	2016	33958	33.5	33223	33.5	735	32.1	
	Up to May 2017	17486	17.2	17089	17.2	397	17.3	
In-hospital Atrial Fibrillation	No	97546	96.2	95440	96.3	2106	92.0	<.001
	Yes	3884	3.8	3700	3.7	184	8.0	
General Anesthesia	Missing	218	0.2	215	0.2	3	0.1	<.001
	No	24089	23.7	23620	23.8	469	20.5	
	Yes	77123	76.0	75305	76.0	1818	79.4	
Failed Bioprosthetic Valve	Missing	87	0.1	85	0.1	2	0.1	0.064
	No	98486	97.1	96248	97.1	2238	97.7	
	Yes	2857	2.8	2807	2.8	50	2.2	

Categorical variables presented as number (frequency) and continuous variables presented as median, 25<sup>th</sup> percentile, 75<sup>th</sup> percentile, minimum, and maximum. +P-values do not correspond to the table exactly as it is presented here. More appropriately, p-values were calculated by comparing only non-missing row values. +P-values are based on Pearson chi-square tests for all categorical row variables. \*P-values are based on chi-square rank based group means score statistics for all continuous/ordinal row variables (designated by \*). \*This is equivalent to Wilcoxon tests. All tests treat the column variable as nominal. AV = aortic valve. CIED = cardiac implantable electrical device. GFR = glomerular filtration rate. LAD = left anterior descending. LVEF = left ventricular ejection fraction. MI = myocardial infarction. NYHA = New York Heart Association. PCI = percutaneous coronary intervention .TIA = transient ischemic attack.

**eTable 3. 30-Day Stroke Rates in Key Subgroups**

Subgroup	Level	Femoral (N=85147)		P-value	Non-Femoral (N=16,283)		P-value
		Stroke Events (N)	30-Day Stroke Rate (%)		Stroke Events (N)	30-Day Stroke Rate (%)	
Valve-in-Valve procedure	Yes	119	2.1%	0.83	27	3.1%	0.85
	No	1654	2.1%		490	3.2%	
Valve Morphology	Bicuspid	54	2.4%	0.21	7	1.9%	0.14
	Tricuspid	1584	2.1%		466	3.1%	
	Other	127	1.9%		38	3.9%	
Heart Team Reason for Procedure	Inoperable / Extreme Risk	480	2.2%	0.01	231	2.9%	0.33
	High Risk (>8% risk of 30-day mortality)	1097	2.1%		257	2.9%	
	Intermediate Risk (4-7% risk of 30- day mortality)	171	1.6%		21	3.1%	
	Low risk (<4% risk of 30-day mortality)	18	2.0%		1	2.5%	
	Patient Preference / Other	6	2.4%		6	2.4%	
Age	>89 years	295	2.6%	<.001	71	3.9%	0.06
	80-89 years	956	2.2%		265	3.3%	

<b>Subgroup</b>	<b>Level</b>	<b>Femoral (N=85147)</b>		<b>P-value</b>	<b>Non-Femoral (N=16,283)</b>		<b>P-value</b>
	<80 years	522	1.7%		181	2.8%	
Site Volume	>100 patients	1637	2.1%	0.66	497	3.2%	0.51
	<100 patients	136	2.2%		20	3.7%	
Anesthesia Type	General	1746	2.1%	0.05	505	3.2%	0.77
	Other	458	1.9%		11	3.5%	
Aortic Stenosis	Yes	1746	2.1%	0.84	510	3.2%	0.07
	No	20	2.2%		6	6.5%	

Variables are categorical and shown as number of strokes (left column) and 30-day stroke rate (% , right column).

**eTable 4. 30-Day Neurologic Event Rates by Year**

<b>Event</b>	<b>2012</b>	<b>2013</b>	<b>2014</b>	<b>2015</b>	<b>2016</b>	<b>2017</b>	<b>P-trend</b>
TIA	0.45%	0.39%	0.34%	0.39%	0.32%	0.42%	.90
Ischemic stroke	2.06%	2.04%	2.26%	2.12%	1.97%	2.05%	.29
Hemorrhagic stroke	0.15%	0.17%	0.13%	0.07%	0.14%	0.15%	.88
Undetermined stroke	0.17%	0.14%	0.07%	0.05%	0.08%	0.09%	.16
Any stroke	2.36%	2.33%	2.44%	2.22%	2.16%	2.27%	.22

2017 values are through May 31<sup>st</sup>. TIA = transient ischemic attack.

**eTable 5. 30-Day Stroke Rates by Year Stratified by Access Type**

<b>30-Day Stroke Rates</b>	<b>2012</b>	<b>2013</b>	<b>2014</b>	<b>2015</b>	<b>2016</b>	<b>2017</b>	<b>P-trend</b>
Femoral	2.45%	2.28%	2.03%	2.06%	2.01%	2.17%	.47
Non-Femoral	2.06%	2.36%	3.40%	3.34%	4.12%	3.79%	<.001

2017 values are through May 31st.



**eTable 6. Adjudication of Neurologic Events and Relation to Health Status**

Variable	Level	All Stroke (N=2290)		Femoral Stroke (N=1773)		Non-femoral Stroke (N=517)		P
		N	%	N	%	N	%	
Symptom Duration >= 24 hours		1564	82.3%	1207	81.4%	357	85.2%	0.07
Neuroimaging Performed		1876	98.7%	1460	98.5%	416	99.3%	0.34
Deficit Type	No Deficit	209	11.1%	160	11.0%	49	11.8%	0.84
	Infarction	1528	81.4%	1195	81.8%	333	80.0%	
	Hemorrhage	73	3.9%	54	3.7%	19	4.6%	
	Both (hemorrhage and infarction)	49	2.6%	37	2.5%	12	2.9%	
	Subarachnoid Hemorrhage	13	0.7%	11	0.8%	2	0.5%	
Social/Recreational Activities Impaired		924	48.6%	735	49.6%	189	45.1%	0.11
Neurocognitive Functions Essential to Patient or Livelihood Impaired		655	34.5%	510	34.4%	145	34.6%	0.008
New Aids or Assistance Required		784	41.2%	617	41.6%	167	39.9%	0.02
Neurologist/Neurosurgeon Confirmation of Diagnosis		1783	93.8%	1394	94.1%	389	92.8%	0.26
Death as a Result of Neurologic Deficit		214	11.3%	160	10.8%	54	12.9%	0.24

Variables are categorical and shown as number (left column) and frequency (% , right column). TIA = transient ischemic attack.

**eTable 7. Characteristics of Propensity Score Matched Patients on Dual Antiplatelet Therapy (Femoral Cohort)**

	<i>Level</i>	<i>Before Matching</i> <i>N=81872</i>			<i>After Matching</i> <i>N=31192</i>		
		<i>DAPT(-)</i> <i>(N=32751)</i>	<i>DAPT(+)</i> <i>(N=49121)</i>	<i>Standardized</i> <i>Difference</i>	<i>DAPT(-)</i> <i>(N=15596)</i>	<i>DAPT(+)</i> <i>(N=15596)</i>	<i>Standardized</i> <i>Difference</i>
Age (Median, IQR)		83.0 ( 77.0, 87.0)	82.0 ( 76.0, 87.0)	-0.071	83.0 ( 76.0, 87.0)	83.0 ( 76.0, 87.0)	0.004
BSA (m <sup>2</sup> , Median, IQR)		1.9 (1.7, 2.1)	1.9 (1.7, 2.0)	-0.039	1.9 (1.7, 2.0)	1.9 (1.7, 2.0)	0.003
LVEF (Median, IQR)		58.0 ( 47.0, 60.0)	58.0 ( 50.0, 60.0)	0.061	58.0 ( 50.0, 60.0)	58.0 ( 50.0, 60.0)	0.005
Hemoglobin (g/dL, Median, IQR)		11.9 ( 10.6, 13.2)	12.0 ( 10.7, 13.2)	0.046	11.8 ( 10.5, 13.1)	11.9 ( 10.6, 13.1)	0.017
Platelet Count (per 1000 $\mu$ , Median, IQR)		188.0 (148.0, 233.0)	195.0 (158.0, 241.0)	0.137	189.0 (146.0, 237.0)	188.0 (151.0, 232.0)	0.022
Female, n (%)	Yes	15124 (46.2)	22451 (45.7)	-0.010	7168 (46.0)	7158 (45.9)	-0.001
Race, n (%)	Yes	30998 (94.6)	45746 (93.1)	-0.063	14544 (93.3)	14524 (93.1)	-0.005
GFR, n (%)	On Dialysis	1203 ( 3.7)	1910 ( 3.9)	0.055	692 ( 4.4)	679 ( 4.4)	0.018
	≤30	1624 ( 5.0)	2163 ( 4.4)	.	820 ( 5.3)	766 ( 4.9)	.
	30-60	13134 (40.1)	18682 (38.0)	.	5970 (38.3)	6044 (38.8)	.
	>60	16790 (51.3)	26366 (53.7)	.	8114 (52.0)	8107 (52.0)	.
Left main stenosis≥50%, n (%)	Yes	2513 ( 7.7)	4892 (10.0)	0.081	1267 ( 8.1)	1334 ( 8.6)	0.016
Proximal LAD, n (%)	Yes	4979 (15.2)	9896 (20.1)	0.130	2529 (16.2)	2600 (16.7)	0.012
Prior MI, n (%)	Yes	6890 (21.0)	11883 (24.2)	0.075	3335 (21.4)	3507 (22.5)	0.027
Endocarditis, n(%)	Yes	358 ( 1.1)	445 ( 0.9)	-0.019	170 ( 1.1)	156 ( 1.0)	-0.009
Prior Stroke/TIA	Yes	6359 (19.4)	8286 (16.9)	-0.066	2789 (17.9)	2735 (17.5)	-0.009
Carotid Stenosis, n (%)	One/Both	5317 (16.2)	9636 (19.6)	0.088	2583 (16.6)	2653 (17.0)	0.012
Prior PAD, n (%)	Yes	7979 (24.4)	12432 (25.3)	0.022	3757 (24.1)	3765 (24.1)	0.001

	Level	Before Matching N=81872			After Matching N=31192		
		DAPT(-) (N=32751)	DAPT(+) (N=49121)	Standardized Difference	DAPT(-) (N=15596)	DAPT(+) (N=15596)	Standardized Difference
Smoking status, n (%)	Yes	1327 ( 4.1)	2461 ( 5.0)	0.046	707 ( 4.5)	712 ( 4.6)	0.002
Diabetes, n (%)	Yes	12016 (36.7)	18709 (38.1)	0.029	5738 (36.8)	5806 (37.2)	0.009
NYHA, n (%)	Class IV	5832 (17.8)	7336 (14.9)	-0.078	2674 (17.1)	2688 (17.2)	0.002
Atrial Fibrillation/Flutter, n (%)	Yes	20674 (63.1)	11729 (23.9)	-0.862	6438 (41.3)	6296 (40.4)	-0.019
Conduction defect, n (%)	Yes	12218 (37.3)	17668 (36.0)	-0.028	5586 (35.8)	5568 (35.7)	-0.002
Chronic Lung disease, n (%)	Severe	4019 (12.3)	5626 (11.5)	-0.025	1797 (11.5)	1775 (11.4)	-0.004
Home Oxygen, n (%)	Yes	3494 (10.7)	4679 ( 9.5)	-0.038	1587 (10.2)	1596 (10.2)	0.002
Hostile Chest, n (%)	Yes	2301 ( 7.0)	3875 ( 7.9)	0.033	1111 ( 7.1)	1115 ( 7.1)	0.001
Porcelain Aorta, n (%)	Yes	1206 ( 3.7)	1947 ( 4.0)	0.015	574 ( 3.7)	583 ( 3.7)	0.003
Prior CIED, n (%)	Yes	7278 (22.2)	6958 (14.2)	-0.210	2713 (17.4)	2725 (17.5)	0.002
Prior PCI, n (%)	Yes	8461 (25.8)	19097 (38.9)	0.282	4495 (28.8)	4699 (30.1)	0.029
Prior Aortic/Cardiac procedure, n (%)	Yes	10126 (30.9)	14965 (30.5)	-0.010	4597 (29.5)	4628 (29.7)	0.004
Aortic Etiology, n (%)		30858 (94.2)	46672 (95.0)	0.035	14728 (94.4)	14733 (94.5)	0.001
Valve Morphology, n (%)	Tricuspid	29139 (89.0)	43997 (89.6)	0.019	13759 (88.2)	13813 (88.6)	0.011
Aortic Insufficiency, n (%)	Moderate/Severe	6265 (19.1)	9566 (19.5)	0.009	3052 (19.6)	3103 (19.9)	0.008
Mitral Insufficiency, n (%)	Moderate/Severe	9789 (29.9)	12141 (24.7)	-0.116	4166 (26.7)	4153 (26.6)	-0.002
Tricuspid Insufficiency, n (%)	Moderate/Severe	9505 (29.0)	9106 (18.5)	-0.248	3621 (23.2)	3513 (22.5)	-0.017
Acuity, n (%)	Salvage	134 ( 0.4)	177 ( 0.4)	0.071	75 ( 0.5)	74 ( 0.5)	0.005
	Emergency	1099 ( 3.4)	1216 ( 2.5)	.	459 ( 2.9)	462 ( 3.0)	.

		<i>Before Matching</i> <i>N=81872</i>			<i>After Matching</i> <i>N=31192</i>		
	<i>Level</i>	<i>DAPT(-)</i> <i>(N=32751)</i>	<i>DAPT(+)</i> <i>(N=49121)</i>	<i>Standardized</i> <i>Difference</i>	<i>DAPT(-)</i> <i>(N=15596)</i>	<i>DAPT(+)</i> <i>(N=15596)</i>	<i>Standardized</i> <i>Difference</i>
	Urgent	2632 ( 8.0)	3376 ( 6.9)	.	1236 ( 7.9)	1216 ( 7.8)	.
	Elective	28886 (88.2)	44352 (90.3)	.	13826 (88.7)	13844 (88.8)	.
Heart Failure w/in 2 weeks, n (%)	Yes	26055 (79.6)	37514 (76.4)	-0.077	12127 (77.8)	12131 (77.8)	0.001
Hypertension, n (%)	Yes	29317 (89.5)	44150 (89.9)	0.012	13869 (88.9)	13903 (89.1)	0.007
Vascular Disease, n (%)	Yes	17306 (52.8)	28442 (57.9)	0.102	8288 (53.1)	8447 (54.2)	0.020
TAVR year, n (%)	Upto May 2017	6268 (19.1)	9633 (19.6)	0.052	2767 (17.7)	2866 (18.4)	0.028
	2016	11779 (36.0)	18585 (37.8)	.	5434 (34.8)	5538 (35.5)	.
	2015	7877 (24.1)	11361 (23.1)	.	3865 (24.8)	3734 (23.9)	.
	2014	4092 (12.5)	5851 (11.9)	.	2030 (13.0)	2017 (12.9)	.
	2013	1491 ( 4.6)	2092 ( 4.3)	.	813 ( 5.2)	788 ( 5.1)	.
	2012	1244 ( 3.8)	1599 ( 3.3)	.	687 ( 4.4)	653 ( 4.2)	.
In-hospital Atrial Fibrillation, n (%)	Yes	920 ( 2.8)	985 ( 2.0)	-0.053	393 ( 2.5)	392 ( 2.5)	-0.000
General Anesthesia, n (%)	Yes	24068 (73.5)	34662 (70.6)	-0.065	11775 (75.5)	11621 (74.5)	-0.023
Failed Bioprosthetic Valve, n (%)	Yes	1059 ( 3.2)	1429 ( 2.9)	-0.019	454 ( 2.9)	456 ( 2.9)	0.001
Valve Type, n (%)	Balloon Expandable Valve	23761 (72.6)	35254 (71.8)	-0.017	11500 (73.7)	11462 (73.5)	-0.006
Anticoagulant Therapy, n (%)	Yes	20890 (63.8)	3718 ( 7.6)	-1.449	3737 (24.0)	3717 (23.8)	-0.003

BSA = body surface area. CIED = cardiac implantable electrical device. DAPT = dual antiplatelet therapy. GFR = glomerular filtration rate. LAD = left anterior descending artery. LVEF = left ventricular ejection fraction. MI = myocardial infarction. NYHA = New York Heart Association. PAD = peripheral arterial disease. PCI = percutaneous coronary intervention. TAVR = transcatheter aortic valve replacement. TIA = transient ischemic attack.

**eTable 8. Characteristics of Propensity Score Matched Patients on Oral Anticoagulant Therapy (Femoral Cohort)**

	Level	Before Matching N=81872			After Matching N=22022		
		OAC(-) (N=57264)	OAC(+) (N=24608)	Standardized Difference	OAC(-) (N=11011)	OAC(+) (N=11011)	Standardized Difference
Age (Median, IQR)		82.0 ( 76.0, 87.0)	83.0 ( 77.0, 87.0)	0.085	83.0 ( 76.0, 87.0)	83.0 ( 77.0, 87.0)	-0.007
BSA (m <sup>2</sup> , Median, IQR)		1.9 (1.7, 2.0)	1.9 (1.7, 2.1)	0.157	1.9 (1.7, 2.1)	1.9 (1.7, 2.1)	0.015
LVEF (Median, IQR)		59.0 ( 50.0, 60.0)	56.0 ( 45.0, 60.0)	-0.154	58.0 ( 45.0, 60.0)	57.0 ( 45.0, 60.0)	-0.007
Hemoglobin (g/dL, Median, IQR)		12.0 ( 10.7, 13.2)	12.0 ( 10.8, 13.2)	0.036	11.9 ( 10.6, 13.2)	11.9 ( 10.6, 13.1)	0.012
Platelet Count (per 1000 $\mu$ , Median, IQR)		193.0 (155.0, 240.0)	189.0 (152.0, 233.0)	-0.061	191.0 (148.0, 239.0)	190.0 (153.0, 235.0)	0.007
Female, n (%)	Yes	26636 (46.5)	10939 (44.5)	-0.041	4877 (44.3)	4874 (44.3)	-0.001
Race, n (%)	Yes	53090 (92.7)	23654 (96.1)	0.149	10473 (95.1)	10468 (95.1)	-0.002
GFR, n (%)	On Dialysis	2358 ( 4.1)	755 ( 3.1)	0.093	448 ( 4.1)	412 ( 3.7)	0.019
	≤30	2652 ( 4.6)	1135 ( 4.6)	.	535 ( 4.9)	558 ( 5.1)	.
	30-60	21575 (37.7)	10241 (41.6)	.	4442 (40.3)	4428 (40.2)	.
	>60	30679 (53.6)	12477 (50.7)	.	5586 (50.7)	5613 (51.0)	.
Left main stenosis≥50%, n (%)	Yes	5396 ( 9.4)	2009 ( 8.2)	-0.045	975 ( 8.9)	964 ( 8.8)	-0.004
Proximal LAD, n (%)	Yes	10720 (18.7)	4155 (16.9)	-0.048	2072 (18.8)	2023 (18.4)	-0.011
Prior MI, n (%)	Yes	13218 (23.1)	5555 (22.6)	-0.012	2573 (23.4)	2560 (23.2)	-0.003
Endocarditis, n(%)	Yes	537 ( 0.9)	266 ( 1.1)	0.014	117 ( 1.1)	130 ( 1.2)	0.011
Prior Stroke/TIA	Yes	9504 (16.6)	5141 (20.9)	0.110	2171 (19.7)	2176 (19.8)	0.001
Carotid Stenosis, n (%)	One/Both	10757 (18.8)	4196 (17.1)	-0.045	1930 (17.5)	1938 (17.6)	0.002
Prior PAD, n (%)	Yes	14149 (24.7)	6262 (25.4)	0.017	2782 (25.3)	2856 (25.9)	0.015

	<i>Level</i>	<i>Before Matching N=81872</i>			<i>After Matching N=22022</i>		
		<i>OAC(-) (N=57264)</i>	<i>OAC(+) (N=24608)</i>	<i>Standardized Difference</i>	<i>OAC(-) (N=11011)</i>	<i>OAC(+) (N=11011)</i>	<i>Standardized Difference</i>
Smoking status, n (%)	Yes	2870 ( 5.0)	918 ( 3.7)	-0.063	466 ( 4.2)	467 ( 4.2)	0.001
Diabetes, n (%)	Yes	21511 (37.6)	9214 (37.4)	-0.003	4142 (37.6)	4147 (37.7)	0.001
NYHA, n (%)	Class IV	8704 (15.2)	4464 (18.1)	0.079	1959 (17.8)	2026 (18.4)	0.016
Atrial Fibrillation/Flutter, n (%)	Yes	12375 (21.6)	20028 (81.4)	1.492	6601 (59.9)	6587 (59.8)	-0.003
Conduction defect, n (%)	Yes	20462 (35.7)	9424 (38.3)	0.053	4116 (37.4)	4105 (37.3)	-0.002
Chronic Lung disease, n (%)	Severe	6488 (11.3)	3157 (12.8)	0.046	1363 (12.4)	1354 (12.3)	-0.003
Home Oxygen, n (%)	Yes	5453 ( 9.5)	2720 (11.1)	0.050	1226 (11.1)	1244 (11.3)	0.005
Hostile Chest, n (%)	Yes	4381 ( 7.7)	1795 ( 7.3)	-0.014	802 ( 7.3)	813 ( 7.4)	0.004
Porcelain Aorta, n (%)	Yes	2218 ( 3.9)	935 ( 3.8)	-0.004	395 ( 3.6)	392 ( 3.6)	-0.002
Prior CIED, n (%)	Yes	7737 (13.5)	6499 (26.4)	0.327	2393 (21.7)	2440 (22.2)	0.010
Prior PCI, n (%)	Yes	19950 (34.8)	7608 (30.9)	-0.084	3726 (33.8)	3787 (34.4)	0.012
Prior Aortic/Cardiac procedure, n (%)	Yes	16918 (29.5)	8173 (33.2)	0.079	3606 (32.7)	3625 (32.9)	0.004
Aortic Etiology, n (%)		54390 (95.0)	23140 (94.0)	-0.042	10361 (94.1)	10350 (94.0)	-0.004
Valve Morphology, n (%)	Tricuspid	51100 (89.2)	22036 (89.5)	0.010	9778 (88.8)	9780 (88.8)	0.001
Aortic Insufficiency, n (%)	Moderate/Severe	11211 (19.6)	4620 (18.8)	-0.020	2129 (19.3)	2167 (19.7)	0.009
Mitral Insufficiency, n (%)	Moderate/Severe	14052 (24.5)	7878 (32.0)	0.167	3196 (29.0)	3214 (29.2)	0.004
Tricuspid Insufficiency, n (%)	Moderate/Severe	10380 (18.1)	8231 (33.4)	0.356	2984 (27.1)	3024 (27.5)	0.008
Acuity, n (%)	Salvage	233 ( 0.4)	78 ( 0.3)	0.079	46 ( 0.4)	52 ( 0.5)	0.014
	Emergency	1410 ( 2.5)	905 ( 3.7)	.	347 ( 3.2)	352 ( 3.2)	.

	Level	Before Matching N=81872			After Matching N=22022		
		OAC(-) (N=57264)	OAC(+) (N=24608)	Standardized Difference	OAC(-) (N=11011)	OAC(+) (N=11011)	Standardized Difference
	Urgent	4068 ( 7.1)	1940 ( 7.9)	.	903 ( 8.2)	870 ( 7.9)	.
	Elective	51553 (90.0)	21685 (88.1)	.	9715 (88.2)	9737 (88.4)	.
Heart Failure w/in 2 weeks, n (%)	Yes	43879 (76.6)	19690 (80.0)	0.082	8613 (78.2)	8710 (79.1)	0.022
Hypertension, n (%)	Yes	51210 (89.4)	22257 (90.4)	0.034	9895 (89.9)	9893 (89.8)	-0.001
Vascular Disease, n (%)	Yes	32177 (56.2)	13571 (55.1)	-0.021	6186 (56.2)	6181 (56.1)	-0.001
TAVR year, n (%)	Upto May 2017	10862 (19.0)	5039 (20.5)	0.053	2077 (18.9)	2147 (19.5)	0.032
	2016	21180 (37.0)	9184 (37.3)	.	4014 (36.5)	4074 (37.0)	.
	2015	13489 (23.6)	5749 (23.4)	.	2596 (23.6)	2561 (23.3)	.
	2014	7074 (12.4)	2869 (11.7)	.	1337 (12.1)	1323 (12.0)	.
	2013	2583 ( 4.5)	1000 ( 4.1)	.	544 ( 4.9)	509 ( 4.6)	.
	2012	2076 ( 3.6)	767 ( 3.1)	.	443 ( 4.0)	397 ( 3.6)	.
In-hospital Atrial Fibrillation, n (%)	Yes	1143 ( 2.0)	762 ( 3.1)	0.070	443 ( 4.0)	458 ( 4.2)	0.007
General Anesthesia, n (%)	Yes	41149 (71.9)	17581 (71.4)	-0.009	8214 (74.6)	8087 (73.4)	-0.026
Failed Bioprosthetic Valve, n (%)	Yes	1661 ( 2.9)	827 ( 3.4)	0.026	357 ( 3.2)	388 ( 3.5)	0.016
Valve Type, n (%)	Balloon Expandable Valve	41523 (72.5)	17492 (71.1)	-0.032	7930 (72.0)	7875 (71.5)	-0.011
Dual Antiplatelet Therapy, n (%)	Yes	45403 (79.3)	3718 (15.1)	-1.678	3748 (34.0)	3713 (33.7)	-0.007

BSA = body surface area. CIED = cardiac implantable electrical device. GFR = glomerular filtration rate. LAD = left anterior descending artery. LVEF = left ventricular ejection fraction. MI = myocardial infarction. NYHA = New York Heart Association. OAC = oral anticoagulant. PAD = peripheral arterial disease. PCI = percutaneous coronary intervention. TAVR = transcatheter aortic valve replacement. TIA = transient ischemic attack.

**eTable 9. Characteristics of Propensity Score Matched Patients on Dual Antiplatelet Therapy vs. Oral Anticoagulant Therapy (Femoral Cohort)**

Level	Before Matching <sup>[A]</sup> N=66293			After Matching N=24668			
	OAC(+) (N=20890)	DAPT(+) (N=45403)	Standardized Difference	OAC(+) (N=12334)	DAPT(+) (N=12334)	Standardized Difference	
Age (Median, IQR)	83.0 ( 77.0, 87.0)	82.0 ( 76.0, 87.0)	-0.104	83.0 ( 77.0, 87.0)	83.0 ( 77.0, 88.0)	-0.002	
BSA (m <sup>2</sup> , Median, IQR)	1.9 (1.7, 2.1)	1.9 (1.7, 2.0)	-0.125	1.9 (1.7, 2.1)	1.9 (1.7, 2.1)	0.004	
LVEF (Median, IQR)	57.0 ( 45.0, 60.0)	58.0 ( 50.0, 60.0)	0.135	57.0 ( 45.0, 60.0)	57.0 ( 45.0, 60.0)	-0.007	
Hemoglobin (g/dL, Median, IQR)	12.0 ( 10.8, 13.2)	12.0 ( 10.8, 13.2)	-0.012	11.9 ( 10.6, 13.1)	11.9 ( 10.6, 13.2)	-0.015	
Platelet Count (per 1000μ, Median, IQR)	189.0 (152.0, 232.0)	195.0 (159.0, 241.0)	0.112	193.0 (154.0, 237.0)	192.0 (154.0, 237.0)	0.006	
Female, n (%)	Yes	9507 (45.5)	21019 (46.3)	0.016	5492 (44.5)	5429 (44.0)	-0.010
Race, n (%)	Yes	20083 (96.1)	42175 (92.9)	-0.143	11736 (95.2)	11715 (95.0)	-0.008
GFR, n (%)	On Dialysis	604 ( 2.9)	1759 ( 3.9)	0.095	461 ( 3.7)	478 ( 3.9)	0.017
	≤30	973 ( 4.7)	2001 ( 4.4)	.	592 ( 4.8)	614 ( 5.0)	.
	30-60	8741 (41.8)	17182 (37.8)	.	5093 (41.3)	5148 (41.7)	.
	>60	10572 (50.6)	24461 (53.9)	.	6188 (50.2)	6094 (49.4)	.
Left main stenosis≥50%, n (%)	Yes	1601 ( 7.7)	4484 ( 9.9)	0.078	1119 ( 9.1)	1138 ( 9.2)	0.005
Proximal LAD, n (%)	Yes	3238 (15.5)	8979 (19.8)	0.112	2286 (18.5)	2360 (19.1)	0.015
Prior MI, n (%)	Yes	4527 (21.7)	10855 (23.9)	0.053	3092 (25.1)	3134 (25.4)	0.008
Endocarditis, n(%)	Yes	222 ( 1.1)	401 ( 0.9)	-0.018	138 ( 1.1)	121 ( 1.0)	-0.014
Prior Stroke/TIA	Yes	4367 (20.9)	7512 (16.5)	-0.112	2388 (19.4)	2304 (18.7)	-0.017
Carotid Stenosis, n (%)	One/Both	3485 (16.7)	8925 (19.7)	0.077	2310 (18.7)	2331 (18.9)	0.004



	<i>Level</i>	<i>Before Matching<sup>[A]</sup></i> <i>N=66293</i>			<i>After Matching</i> <i>N=24668</i>		
		<i>OAC(+)</i> <i>(N=20890)</i>	<i>DAPT(+)</i> <i>(N=45403)</i>	<i>Standardized</i> <i>Difference</i>	<i>OAC(+)</i> <i>(N=12334)</i>	<i>DAPT(+)</i> <i>(N=12334)</i>	<i>Standardized</i> <i>Difference</i>
Prior PAD, n (%)	Yes	5284 (25.3)	11454 (25.2)	-0.002	3224 (26.1)	3268 (26.5)	0.008
Smoking status, n (%)	Yes	751 ( 3.6)	2294 ( 5.1)	0.072	510 ( 4.1)	527 ( 4.3)	0.007
Diabetes, n (%)	Yes	7680 (36.8)	17175 (37.8)	0.022	4622 (37.5)	4610 (37.4)	-0.002
NYHA, n (%)	Class IV	3777 (18.1)	6649 (14.6)	-0.093	2150 (17.4)	2181 (17.7)	0.007
Atrial Fibrillation/Flutter, n (%)	Yes	17072 (81.7)	8773 (19.3)	-1.597	8517 (69.1)	8537 (69.2)	0.004
Conduction defect, n (%)	Yes	8072 (38.6)	16316 (35.9)	-0.056	4790 (38.8)	4927 (39.9)	0.023
Chronic Lung disease, n (%)	Severe	2702 (12.9)	5171 (11.4)	-0.047	1577 (12.8)	1569 (12.7)	-0.002
Home Oxygen, n (%)	Yes	2321 (11.1)	4280 ( 9.4)	-0.056	1349 (10.9)	1381 (11.2)	0.008
Hostile Chest, n (%)	Yes	1517 ( 7.3)	3597 ( 7.9)	0.025	940 ( 7.6)	935 ( 7.6)	-0.002
Porcelain Aorta, n (%)	Yes	807 ( 3.9)	1819 ( 4.0)	0.007	496 ( 4.0)	464 ( 3.8)	-0.013
Prior CIED, n (%)	Yes	5528 (26.5)	5987 (13.2)	-0.338	2660 (21.6)	2640 (21.4)	-0.004
Prior PCI, n (%)	Yes	5648 (27.0)	17137 (37.7)	0.230	4390 (35.6)	4455 (36.1)	0.011
Prior Aortic/Cardiac procedure, n (%)	Yes	6855 (32.8)	13647 (30.1)	-0.059	3993 (32.4)	4007 (32.5)	0.002
Aortic Etiology, n (%)		19639 (94.0)	43171 (95.1)	0.047	11662 (94.6)	11681 (94.7)	0.007
Valve Morphology, n (%)	Tricuspid	18731 (89.7)	40692 (89.6)	-0.001	11057 (89.6)	11054 (89.6)	-0.001
Aortic Insufficiency, n (%)	Moderate/Severe	3919 (18.8)	8865 (19.5)	0.019	2431 (19.7)	2402 (19.5)	-0.006
Mitral Insufficiency, n (%)	Moderate/Severe	6755 (32.3)	11018 (24.3)	-0.180	3688 (29.9)	3663 (29.7)	-0.004
Tricuspid Insufficiency, n (%)	Moderate/Severe	7061 (33.8)	7936 (17.5)	-0.381	3248 (26.3)	3181 (25.8)	-0.012
Acuity, n (%)	Salvage	66 ( 0.3)	165 ( 0.4)	0.090	44 ( 0.4)	49 ( 0.4)	0.011

		<i>Before Matching<sup>[A]</sup></i> <i>N=66293</i>			<i>After Matching</i> <i>N=24668</i>		
	<i>Level</i>	<i>OAC(+)</i> <i>(N=20890)</i>	<i>DAPT(+)</i> <i>(N=45403)</i>	<i>Standardized</i> <i>Difference</i>	<i>OAC(+)</i> <i>(N=12334)</i>	<i>DAPT(+)</i> <i>(N=12334)</i>	<i>Standardized</i> <i>Difference</i>
	Emergency	777 ( 3.7)	1088 ( 2.4)	.	397 ( 3.2)	380 ( 3.1)	.
	Urgent	1651 ( 7.9)	3087 ( 6.8)	.	1013 ( 8.2)	1024 ( 8.3)	.
	Elective	18396 (88.1)	41063 (90.4)	.	10880 (88.2)	10881 (88.2)	.
Heart Failure w/in 2 weeks, n (%)	Yes	16872 (80.8)	34696 (76.4)	-0.106	9826 (79.7)	9777 (79.3)	-0.010
Hypertension, n (%)	Yes	18859 (90.3)	40752 (89.8)	-0.017	11127 (90.2)	11116 (90.1)	-0.003
Vascular Disease, n (%)	Yes	11296 (54.1)	26167 (57.6)	0.072	7164 (58.1)	7252 (58.8)	0.015
TAVR year, n (%)	Upto May 2017	4353 (20.8)	8947 (19.7)	0.035	2380 (19.3)	2371 (19.2)	0.018
	2016	7813 (37.4)	17214 (37.9)	.	4562 (37.0)	4522 (36.7)	.
	2015	4869 (23.3)	10481 (23.1)	.	2904 (23.5)	2915 (23.6)	.
	2014	2437 (11.7)	5419 (11.9)	.	1551 (12.6)	1543 (12.5)	.
	2013	807 ( 3.9)	1899 ( 4.2)	.	535 ( 4.3)	543 ( 4.4)	.
	2012	611 ( 2.9)	1443 ( 3.2)	.	402 ( 3.3)	440 ( 3.6)	.
In-hospital Atrial Fibrillation, n (%)	Yes	634 ( 3.0)	857 ( 1.9)	-0.074	526 ( 4.3)	485 ( 3.9)	-0.017
General Anesthesia, n (%)	Yes	14821 (70.9)	31902 (70.3)	-0.015	8834 (71.6)	8833 (71.6)	-0.000
Failed Bioprosthetic Valve, n (%)	Yes	719 ( 3.4)	1321 ( 2.9)	-0.030	411 ( 3.3)	422 ( 3.4)	0.005
Valve Type, n (%)	Balloon Expandable Valve	14840 (71.0)	32602 (71.8)	0.017	8799 (71.3)	8786 (71.2)	-0.002

BSA = body surface area. CIED = cardiac implantable electrical device. DAPT = dual antiplatelet therapy. GFR = glomerular filtration rate. LAD = left anterior descending artery. LVEF = left ventricular ejection fraction. MI = myocardial infarction. NYHA = New York Heart Association. OAC = oral anticoagulant. PAD = peripheral arterial disease. PCI = percutaneous coronary intervention. TAVR = transcatheter aortic valve replacement. TIA = transient ischemic attack. Only patients receiving exactly one therapy (DAPT or OAC) are considered for this matching

**eTable 10. Characteristics of Propensity Score Matched Patients on Dual Antiplatelet Therapy (Non-femoral Cohort)**

Level	Before Matching N=14770			After Matching N=6338			
	DAPT(-) (N=6343)	DAPT(+) (N=8427)	Standardized Difference	DAPT(-) (N=3169)	DAPT(+) (N=3169)	Standardized Difference	
Age (Median, IQR)	82.0 ( 76.0, 87.0)	81.0 ( 75.0, 86.0)	-0.115	82.0 ( 76.0, 87.0)	82.0 ( 76.0, 87.0)	-0.014	
BSA (m <sup>2</sup> , Median, IQR)	1.8 (1.6, 2.0)	1.8 (1.6, 2.0)	-0.013	1.8 (1.6, 2.0)	1.8 (1.6, 2.0)	0.008	
LVEF (Median, IQR)	57.0 ( 47.0, 60.0)	57.0 ( 45.0, 60.0)	-0.015	58.0 ( 48.0, 60.0)	58.0 ( 48.0, 60.0)	-0.007	
Hemoglobin (g/dL, Median, IQR)	11.7 ( 10.4, 12.9)	11.8 ( 10.5, 13.0)	0.040	11.6 ( 10.3, 12.8)	11.6 ( 10.3, 12.8)	-0.005	
Platelet Count (per 1000 $\mu$ , Median, IQR)	194.0 (153.0, 239.0)	199.0 (161.0, 246.0)	0.107	195.0 (152.0, 241.0)	196.0 (159.0, 239.0)	0.028	
Female, n (%)	Yes	3346 (52.8)	4300 (51.0)	-0.035	1673 (52.8)	1651 (52.1)	-0.014
Race, n (%)	Yes	6000 (94.6)	7884 (93.6)	-0.044	2949 (93.1)	2941 (92.8)	-0.010
GFR, n (%)	On Dialysis	273 ( 4.3)	395 ( 4.7)	0.081	157 ( 5.0)	149 ( 4.7)	0.012
	≤30	397 ( 6.3)	437 ( 5.2)	.	195 ( 6.2)	195 ( 6.2)	.
	30-60	2692 (42.4)	3346 (39.7)	.	1322 (41.7)	1324 (41.8)	.
	>60	2981 (47.0)	4249 (50.4)	.	1495 (47.2)	1501 (47.4)	.
Left main stenosis≥50%, n (%)	Yes	713 (11.2)	1205 (14.3)	0.092	376 (11.9)	397 (12.5)	0.020
Proximal LAD, n (%)	Yes	1222 (19.3)	2063 (24.5)	0.126	649 (20.5)	684 (21.6)	0.027
Prior MI, n (%)	Yes	1682 (26.5)	2635 (31.3)	0.105	872 (27.5)	872 (27.5)	0.000
Endocarditis, n(%)	Yes	58 ( 0.9)	45 ( 0.5)	-0.045	23 ( 0.7)	20 ( 0.6)	-0.012
Prior Stroke/TIA	Yes	1326 (20.9)	1718 (20.4)	-0.013	619 (19.5)	658 (20.8)	0.031
Carotid Stenosis, n (%)	One/Both	1755 (27.7)	2649 (31.4)	0.083	904 (28.5)	922 (29.1)	0.013
Prior PAD, n (%)	Yes	3281 (51.7)	4617 (54.8)	0.061	1626 (51.3)	1670 (52.7)	0.028
Smoking status, n (%)	Yes	599 ( 9.4)	1036 (12.3)	0.092	338 (10.7)	326 (10.3)	-0.012
Diabetes, n (%)	Yes	2398 (37.8)	3265 (38.7)	0.019	1186 (37.4)	1245 (39.3)	0.038
NYHA, n (%)	Class IV	1247 (19.7)	1580 (18.7)	-0.023	629 (19.8)	615 (19.4)	-0.011

		<i>Before Matching</i> <i>N=14770</i>			<i>After Matching</i> <i>N=6338</i>		
	<i>Level</i>	<i>DAPT(-)</i> <i>(N=6343)</i>	<i>DAPT(+)</i> <i>(N=8427)</i>	<i>Standardized</i> <i>Difference</i>	<i>DAPT(-)</i> <i>(N=3169)</i>	<i>DAPT(+)</i> <i>(N=3169)</i>	<i>Standardized</i> <i>Difference</i>
Atrial Fibrillation/Flutter, n (%)	Yes	3598 (56.7)	2296 (27.2)	-0.626	1237 (39.0)	1211 (38.2)	-0.017
Conduction defect, n (%)	Yes	2072 (32.7)	2716 (32.2)	-0.009	991 (31.3)	1006 (31.7)	0.010
Chronic Lung disease, n (%)	Severe	1001 (15.8)	1383 (16.4)	0.017	497 (15.7)	506 (16.0)	0.008
Home Oxygen, n (%)	Yes	943 (14.9)	1175 (13.9)	-0.026	446 (14.1)	465 (14.7)	0.017
Hostile Chest, n (%)	Yes	536 ( 8.5)	838 ( 9.9)	0.052	266 ( 8.4)	282 ( 8.9)	0.018
Porcelain Aorta, n (%)	Yes	662 (10.4)	886 (10.5)	0.003	313 ( 9.9)	333 (10.5)	0.021
Prior CIED, n (%)	Yes	1292 (20.4)	1243 (14.8)	-0.148	550 (17.4)	545 (17.2)	-0.004
Prior PCI, n (%)	Yes	2016 (31.8)	3753 (44.5)	0.265	1113 (35.1)	1145 (36.1)	0.021
Prior Aortic/Cardiac procedure, n (%)	Yes	2428 (38.3)	3423 (40.6)	0.048	1211 (38.2)	1211 (38.2)	0.000
Aortic Etiology, n (%)		6009 (94.7)	8036 (95.4)	0.029	3022 (95.4)	3015 (95.1)	-0.010
Valve Morphology, n (%)	Tricuspid	5783 (91.2)	7771 (92.2)	0.038	2885 (91.0)	2900 (91.5)	0.017
Aortic Insufficiency, n (%)	Moderate/Severe	1292 (20.4)	1764 (20.9)	0.014	680 (21.5)	678 (21.4)	-0.002
Mitral Insufficiency, n (%)	Moderate/Severe	1880 (29.6)	2282 (27.1)	-0.057	861 (27.2)	870 (27.5)	0.006
Tricuspid Insufficiency, n (%)	Moderate/Severe	1679 (26.5)	1543 (18.3)	-0.197	682 (21.5)	660 (20.8)	-0.017
Acuity, n (%)	Salvage	28 ( 0.4)	38 ( 0.5)	0.032	15 ( 0.5)	14 ( 0.4)	0.023
	Emergency	229 ( 3.6)	279 ( 3.3)	.	111 ( 3.5)	119 ( 3.8)	.
	Urgent	541 ( 8.5)	658 ( 7.8)	.	262 ( 8.3)	246 ( 7.8)	.
	Elective	5545 (87.4)	7452 (88.4)	.	2781 (87.8)	2790 (88.0)	.
Heart Failure w/in 2 weeks, n (%)	Yes	5030 (79.3)	6361 (75.5)	-0.091	2476 (78.1)	2477 (78.2)	0.001
Hypertension, n (%)	Yes	5775 (91.0)	7762 (92.1)	0.038	2868 (90.5)	2890 (91.2)	0.024
Vascular Disease, n (%)	Yes	4642 (73.2)	6577 (78.0)	0.113	2331 (73.6)	2368 (74.7)	0.027

		<i>Before Matching</i> N=14770			<i>After Matching</i> N=6338		
	<i>Level</i>	<i>DAPT(-)</i> (N=6343)	<i>DAPT(+)</i> (N=8427)	<i>Standardized</i> <i>Difference</i>	<i>DAPT(-)</i> (N=3169)	<i>DAPT(+)</i> (N=3169)	<i>Standardized</i> <i>Difference</i>
TAVR year, n (%)	Upto May 2017	397 ( 6.3)	575 ( 6.8)	0.091	188 ( 5.9)	177 ( 5.6)	0.044
	2016	937 (14.8)	1403 (16.6)	.	417 (13.2)	432 (13.6)	.
	2015	1128 (17.8)	1566 (18.6)	.	562 (17.7)	590 (18.6)	.
	2014	1818 (28.7)	2219 (26.3)	.	907 (28.6)	887 (28.0)	.
	2013	1646 (25.9)	2225 (26.4)	.	856 (27.0)	870 (27.5)	.
	2012	417 ( 6.6)	439 ( 5.2)	.	239 ( 7.5)	213 ( 6.7)	.
In-hospital Atrial Fibrillation, n (%)	Yes	778 (12.3)	766 ( 9.1)	-0.103	350 (11.0)	366 (11.5)	0.016
General Anesthesia, n (%)	Yes	6238 (98.3)	8233 (97.7)	-0.047	3112 (98.2)	3108 (98.1)	-0.009
Failed Bioprosthetic Valve, n (%)	Yes	124 ( 2.0)	146 ( 1.7)	-0.017	58 ( 1.8)	60 ( 1.9)	0.005
Valve Type, n (%)	Balloon Expandable Valve	5574 (87.9)	7174 (85.1)	-0.080	2808 (88.6)	2818 (88.9)	0.010
Anticoagulant Therapy, n (%)	Yes	3839 (60.5)	666 ( 7.9)	-1.333	670 (21.1)	666 (21.0)	-0.003

BSA = body surface area. CIED = cardiac implantable electrical device. DAPT = dual antiplatelet therapy. GFR = glomerular filtration rate. LAD = left anterior descending artery. LVEF = left ventricular ejection fraction. MI = myocardial infarction. NYHA = New York Heart Association. PAD = peripheral arterial disease. PCI = percutaneous coronary intervention. TAVR = transcatheter aortic valve replacement. TIA = transient ischemic attack.

**eTable 11. Characteristics of Propensity Score Matched Patients on Oral Anticoagulant Therapy (Non-femoral Cohort)**

	<i>Level</i>	<i>Before Matching N=14770</i>			<i>After Matching N=4608</i>		
		<i>OAC(-) (N=10265)</i>	<i>OAC(+) (N=4505)</i>	<i>Standardized Difference</i>	<i>OAC(-) (N=2304)</i>	<i>OAC(+) (N=2304)</i>	<i>Standardized Difference</i>
Age (Median, IQR)		82.0 ( 75.0, 86.0)	82.0 ( 76.0, 86.0)	0.051	82.0 ( 76.0, 87.0)	82.0 ( 75.0, 86.0)	-0.010
BSA (m <sup>2</sup> , Median, IQR)		1.8 (1.6, 2.0)	1.8 (1.7, 2.0)	0.162	1.8 (1.7, 2.0)	1.8 (1.7, 2.0)	0.007
LVEF (Median, IQR)		58.0 ( 47.0, 60.0)	55.0 ( 45.0, 60.0)	-0.049	57.0 ( 45.5, 60.0)	57.0 ( 47.0, 60.0)	0.003
Hemoglobin (g/dL, Median, IQR)		11.7 ( 10.4, 12.9)	11.8 ( 10.6, 13.0)	0.067	11.6 ( 10.3, 12.9)	11.7 ( 10.4, 13.0)	0.019
Platelet Count (per 1000μ, Median, IQR)		198.0 (159.0, 245.0)	194.0 (157.0, 239.0)	-0.050	195.5 (151.0, 242.0)	195.0 (157.0, 239.0)	0.027
Female, n (%)	Yes	5386 (52.5)	2260 (50.2)	-0.046	1169 (50.7)	1175 (51.0)	0.005
Race, n (%)	Yes	9545 (93.0)	4339 (96.3)	0.148	2181 (94.7)	2183 (94.7)	0.004
GFR, n (%)	On Dialysis	498 ( 4.9)	170 ( 3.8)	0.074	102 ( 4.4)	91 ( 3.9)	0.027
	≤30	549 ( 5.3)	285 ( 6.3)	.	151 ( 6.6)	153 ( 6.6)	.
	30-60	4145 (40.4)	1893 (42.0)	.	973 (42.2)	965 (41.9)	.
	>60	5073 (49.4)	2157 (47.9)	.	1078 (46.8)	1095 (47.5)	.
Left main stenosis≥50%, n (%)	Yes	1399 (13.6)	519 (11.5)	-0.064	275 (11.9)	283 (12.3)	0.011
Proximal LAD, n (%)	Yes	2362 (23.0)	923 (20.5)	-0.061	468 (20.3)	494 (21.4)	0.028
Prior MI, n (%)	Yes	3088 (30.1)	1229 (27.3)	-0.062	639 (27.7)	673 (29.2)	0.033
Endocarditis, n(%)	Yes	61 ( 0.6)	42 ( 0.9)	0.039	21 ( 0.9)	21 ( 0.9)	0.000
Prior Stroke/TIA	Yes	2009 (19.6)	1035 (23.0)	0.083	500 (21.7)	486 (21.1)	-0.015
Carotid Stenosis, n (%)	One/Both	3130 (30.5)	1274 (28.3)	-0.049	651 (28.3)	667 (28.9)	0.015

	<i>Level</i>	<i>Before Matching N=14770</i>			<i>After Matching N=4608</i>		
		<i>OAC(-) (N=10265)</i>	<i>OAC(+) (N=4505)</i>	<i>Standardized Difference</i>	<i>OAC(-) (N=2304)</i>	<i>OAC(+) (N=2304)</i>	<i>Standardized Difference</i>
Prior PAD, n (%)	Yes	5517 (53.7)	2381 (52.9)	-0.018	1216 (52.8)	1210 (52.5)	-0.005
Smoking status, n (%)	Yes	1233 (12.0)	402 ( 8.9)	-0.101	245 (10.6)	239 (10.4)	-0.009
Diabetes, n (%)	Yes	3916 (38.1)	1747 (38.8)	0.013	902 (39.1)	872 (37.8)	-0.027
NYHA, n (%)	Class IV	1942 (18.9)	885 (19.6)	0.018	467 (20.3)	488 (21.2)	0.023
Atrial Fibrillation/Flutter, n (%)	Yes	2580 (25.1)	3314 (73.6)	1.107	1245 (54.0)	1239 (53.8)	-0.005
Conduction defect, n (%)	Yes	3267 (31.8)	1521 (33.8)	0.041	747 (32.4)	766 (33.2)	0.018
Chronic Lung disease, n (%)	Severe	1658 (16.2)	726 (16.1)	-0.001	370 (16.1)	395 (17.1)	0.029
Home Oxygen, n (%)	Yes	1435 (14.0)	683 (15.2)	0.034	354 (15.4)	360 (15.6)	0.007
Hostile Chest, n (%)	Yes	952 ( 9.3)	422 ( 9.4)	0.003	195 ( 8.5)	222 ( 9.6)	0.041
Porcelain Aorta, n (%)	Yes	1052 (10.2)	496 (11.0)	0.025	234 (10.2)	249 (10.8)	0.021
Prior CIED, n (%)	Yes	1482 (14.4)	1053 (23.4)	0.230	448 (19.4)	466 (20.2)	0.020
Prior PCI, n (%)	Yes	4183 (40.8)	1586 (35.2)	-0.114	874 (37.9)	881 (38.2)	0.006
Prior Aortic/Cardiac procedure, n (%)	Yes	4057 (39.5)	1794 (39.8)	0.006	902 (39.1)	920 (39.9)	0.016
Aortic Etiology, n (%)		9794 (95.4)	4251 (94.4)	-0.048	2179 (94.6)	2187 (94.9)	0.016
Valve Morphology, n (%)	Tricuspid	9397 (91.5)	4157 (92.3)	0.027	2111 (91.6)	2108 (91.5)	-0.005
Aortic Insufficiency, n (%)	Moderate/ Severe	2167 (21.1)	889 (19.7)	-0.034	468 (20.3)	476 (20.7)	0.009
Mitral Insufficiency, n (%)	Moderate/ Severe	2707 (26.4)	1455 (32.3)	0.130	667 (28.9)	696 (30.2)	0.028
Tricuspid Insufficiency, n (%)	Moderate/ Severe	1842 (17.9)	1380 (30.6)	0.299	559 (24.3)	560 (24.3)	0.001
Acuity, n (%)	Salvage	47 ( 0.5)	19 ( 0.4)	0.031	13 ( 0.6)	11 ( 0.5)	0.042

		<i>Before Matching</i> <i>N=14770</i>			<i>After Matching</i> <i>N=4608</i>		
	<i>Level</i>	<i>OAC(-)</i> <i>(N=10265)</i>	<i>OAC(+)</i> <i>(N=4505)</i>	<i>Standardized</i> <i>Difference</i>	<i>OAC(-)</i> <i>(N=2304)</i>	<i>OAC(+)</i> <i>(N=2304)</i>	<i>Standardized</i> <i>Difference</i>
	Emergency	341 ( 3.3)	167 ( 3.7)	.	93 ( 4.0)	80 ( 3.5)	.
	Urgent	815 ( 7.9)	384 ( 8.5)	.	195 ( 8.5)	214 ( 9.3)	.
	Elective	9062 (88.3)	3935 (87.3)	.	2003 (86.9)	1999 (86.8)	.
Heart Failure w/in 2 weeks, n (%)	Yes	7831 (76.3)	3560 (79.0)	0.066	1782 (77.3)	1814 (78.7)	0.034
Hypertension, n (%)	Yes	9388 (91.5)	4149 (92.1)	0.023	2118 (91.9)	2113 (91.7)	-0.008
Vascular Disease, n (%)	Yes	7868 (76.6)	3351 (74.4)	-0.053	1712 (74.3)	1730 (75.1)	0.018
TAVR year, n (%)	Upto May 2017	666 ( 6.5)	306 ( 6.8)	0.067	136 ( 5.9)	137 ( 5.9)	0.042
	2016	1604 (15.6)	736 (16.3)	.	329 (14.3)	339 (14.7)	.
	2015	1863 (18.1)	831 (18.4)	.	402 (17.4)	427 (18.5)	.
	2014	2758 (26.9)	1279 (28.4)	.	646 (28.0)	648 (28.1)	.
	2013	2747 (26.8)	1124 (25.0)	.	640 (27.8)	615 (26.7)	.
	2012	627 ( 6.1)	229 ( 5.1)	.	151 ( 6.6)	138 ( 6.0)	.
In-hospital Atrial Fibrillation, n (%)	Yes	965 ( 9.4)	579 (12.9)	0.110	372 (16.1)	366 (15.9)	-0.007
General Anesthesia, n (%)	Yes	10051 (97.9)	4420 (98.1)	0.014	2262 (98.2)	2261 (98.1)	-0.003
Failed Bioprosthetic Valve, n (%)	Yes	183 ( 1.8)	87 ( 1.9)	0.011	41 ( 1.8)	43 ( 1.9)	0.007
Valve Type, n (%)	Balloon Expandabl e Valve	8867 (86.4)	3881 (86.1)	-0.007	2038 (88.5)	2011 (87.3)	-0.036
Dual Antiplatelet Therapy, n (%)	Yes	7761 (75.6)	666 (14.8)	-1.544	684 (29.7)	666 (28.9)	-0.017

BSA = body surface area. CIED = cardiac implantable electrical device. GFR = glomerular filtration rate. LAD = left anterior descending artery. LVEF = left ventricular ejection fraction. MI = myocardial infarction. NYHA = New York Heart Association. OAC = oral anticoagulant. PAD = peripheral arterial disease. PCI = percutaneous coronary intervention. TAVR = transcatheter aortic valve replacement. TIA = transient ischemic attack.



**eTable 12. Characteristics of Propensity Score Matched Patients on Dual Antiplatelet Therapy vs. Oral Anticoagulant Therapy (Non-femoral Cohort)**

		<i>Before Matching N=11600</i>			<i>After Matching N=5550</i>		
	<i>Level</i>	<i>OAC(+) (N=3839)</i>	<i>DAPT(+) (N=7761)</i>	<i>Standardized Difference</i>	<i>OAC(+) (N=2775)</i>	<i>DAPT(+) (N=2775)</i>	<i>Standardized Difference</i>
Age (Median, IQR)		82.0 ( 76.0, 87.0)	81.0 ( 75.0, 86.0)	-0.102	82.0 ( 76.0, 87.0)	82.0 ( 76.0, 87.0)	-0.003
BSA (m <sup>2</sup> , Median, IQR)		1.8 (1.7, 2.0)	1.8 (1.6, 2.0)	-0.117	1.8 (1.7, 2.0)	1.8 (1.6, 2.0)	0.002
LVEF (Median, IQR)		56.0 ( 45.0, 60.0)	58.0 ( 45.0, 60.0)	0.024	57.0 ( 45.0, 60.0)	57.0 ( 45.0, 60.0)	-0.014
Hemoglobin (g/dL, Median, IQR)		11.8 ( 10.6, 13.1)	11.8 ( 10.5, 13.0)	-0.038	11.7 ( 10.5, 12.9)	11.7 ( 10.4, 12.9)	-0.023
Platelet Count (per 1000μ, Median, IQR)		195.0 (157.0, 239.0)	200.0 (162.0, 247.0)	0.089	197.0 (158.0, 240.0)	198.0 (160.0, 242.0)	0.021
Female, n (%)	Yes	1969 (51.3)	4009 (51.7)	0.007	1401 (50.5)	1386 (49.9)	-0.011
Race, n (%)	Yes	3700 (96.4)	7245 (93.4)	-0.138	2655 (95.7)	2650 (95.5)	-0.009
GFR, n (%)	On Dialysis	141 ( 3.7)	366 ( 4.7)	0.092	128 ( 4.6)	137 ( 4.9)	0.023
	≤30	235 ( 6.1)	387 ( 5.0)	.	150 ( 5.4)	159 ( 5.7)	.
	30-60	1633 (42.5)	3086 (39.8)	.	1172 (42.2)	1174 (42.3)	.
	>60	1830 (47.7)	3922 (50.5)	.	1325 (47.7)	1305 (47.0)	.
Left main stenosis≥50%, n (%)	Yes	420 (10.9)	1106 (14.3)	0.100	357 (12.9)	360 (13.0)	0.003
Proximal LAD, n (%)	Yes	737 (19.2)	1877 (24.2)	0.121	604 (21.8)	625 (22.5)	0.018
Prior MI, n (%)	Yes	1016 (26.5)	2422 (31.2)	0.105	800 (28.8)	828 (29.8)	0.022
Endocarditis, n(%)	Yes	37 ( 1.0)	40 ( 0.5)	-0.052	19 ( 0.7)	19 ( 0.7)	0.000
Prior Stroke/TIA	Yes	880 (22.9)	1563 (20.1)	-0.068	614 (22.1)	593 (21.4)	-0.018

	<i>Level</i>	<i>Before Matching</i> <i>N=11600</i>			<i>After Matching</i> <i>N=5550</i>		
		<i>OAC(+)</i> <i>(N=3839)</i>	<i>DAPT(+)</i> <i>(N=7761)</i>	<i>Standardized</i> <i>Difference</i>	<i>OAC(+)</i> <i>(N=2775)</i>	<i>DAPT(+)</i> <i>(N=2775)</i>	<i>Standardized</i> <i>Difference</i>
Carotid Stenosis, n (%)	One/Both	1060 (27.6)	2435 (31.4)	0.083	809 (29.2)	791 (28.5)	-0.014
Prior PAD, n (%)	Yes	2026 (52.8)	4262 (54.9)	0.043	1511 (54.5)	1525 (55.0)	0.010
Smoking status, n (%)	Yes	332 ( 8.6)	966 (12.4)	0.124	267 ( 9.6)	270 ( 9.7)	0.004
Diabetes, n (%)	Yes	1472 (38.3)	2990 (38.5)	0.004	1063 (38.3)	1042 (37.5)	-0.016
NYHA, n (%)	Class IV	748 (19.5)	1443 (18.6)	-0.023	548 (19.7)	561 (20.2)	0.012
Atrial Fibrillation/Flutter, n (%)	Yes	2844 (74.1)	1826 (23.5)	-1.172	1782 (64.2)	1789 (64.5)	0.005
Conduction defect, n (%)	Yes	1301 (33.9)	2496 (32.2)	-0.037	961 (34.6)	980 (35.3)	0.014
Chronic Lung disease, n (%)	Severe	615 (16.0)	1272 (16.4)	0.010	445 (16.0)	437 (15.7)	-0.008
Home Oxygen, n (%)	Yes	594 (15.5)	1086 (14.0)	-0.042	413 (14.9)	420 (15.1)	0.007
Hostile Chest, n (%)	Yes	348 ( 9.1)	764 ( 9.8)	0.027	268 ( 9.7)	270 ( 9.7)	0.002
Porcelain Aorta, n (%)	Yes	426 (11.1)	816 (10.5)	-0.019	306 (11.0)	302 (10.9)	-0.005
Prior CIED, n (%)	Yes	893 (23.3)	1083 (14.0)	-0.241	540 (19.5)	569 (20.5)	0.026
Prior PCI, n (%)	Yes	1221 (31.8)	3388 (43.7)	0.246	1053 (37.9)	1087 (39.2)	0.025
Prior Aortic/Cardiac procedure, n (%)	Yes	1507 (39.3)	3136 (40.4)	0.024	1095 (39.5)	1095 (39.5)	0.000
Aortic Etiology, n (%)		3617 (94.2)	7402 (95.4)	0.052	2632 (94.8)	2643 (95.2)	0.018
Valve Morphology, n (%)	Tricuspid	3530 (92.0)	7144 (92.0)	0.004	2570 (92.6)	2553 (92.0)	-0.023
Aortic Insufficiency, n (%)	Moderate/Severe	751 (19.6)	1626 (21.0)	0.035	543 (19.6)	552 (19.9)	0.008
Mitral Insufficiency, n (%)	Moderate/Severe	1218 (31.7)	2045 (26.3)	-0.119	838 (30.2)	833 (30.0)	-0.004

	<i>Level</i>	<i>Before Matching</i> <i>N=11600</i>			<i>After Matching</i> <i>N=5550</i>		
		<i>OAC(+)</i> <i>(N=3839)</i>	<i>DAPT(+)</i> <i>(N=7761)</i>	<i>Standardized</i> <i>Difference</i>	<i>OAC(+)</i> <i>(N=2775)</i>	<i>DAPT(+)</i> <i>(N=2775)</i>	<i>Standardized</i> <i>Difference</i>
Tricuspid Insufficiency, n (%)	Moderate/Severe	1188 (30.9)	1351 (17.4)	-0.320	682 (24.6)	662 (23.9)	-0.017
Acuity, n (%)	Salvage	17 ( 0.4)	36 ( 0.5)	0.038	14 ( 0.5)	15 ( 0.5)	0.009
	Emergency	139 ( 3.6)	251 ( 3.2)	.	97 ( 3.5)	100 ( 3.6)	.
	Urgent	330 ( 8.6)	604 ( 7.8)	.	239 ( 8.6)	236 ( 8.5)	.
	Elective	3353 (87.3)	6870 (88.5)	.	2425 (87.4)	2424 (87.4)	.
Heart Failure w/in 2 weeks, n (%)	Yes	3055 (79.6)	5856 (75.5)	-0.099	2176 (78.4)	2179 (78.5)	0.003
Hypertension, n (%)	Yes	3523 (91.8)	7136 (91.9)	0.007	2540 (91.5)	2550 (91.9)	0.013
Vascular Disease, n (%)	Yes	2828 (73.7)	6054 (78.0)	0.102	2121 (76.4)	2126 (76.6)	0.004
TAVR year, n (%)	Upto May 2017	273 ( 7.1)	542 ( 7.0)	0.058	173 ( 6.2)	171 ( 6.2)	0.025
	2016	641 (16.7)	1308 (16.9)	.	444 (16.0)	435 (15.7)	.
	2015	707 (18.4)	1442 (18.6)	.	532 (19.2)	552 (19.9)	.
	2014	1090 (28.4)	2030 (26.2)	.	757 (27.3)	755 (27.2)	.
	2013	936 (24.4)	2037 (26.2)	.	725 (26.1)	710 (25.6)	.
	2012	192 ( 5.0)	402 ( 5.2)	.	144 ( 5.2)	152 ( 5.5)	.
	In-hospital Atrial Fibrillation, n (%)	Yes	504 (13.1)	691 ( 8.9)	-0.135	450 (16.2)	439 (15.8)
General Anesthesia, n (%)	Yes	3766 (98.1)	7579 (97.7)	-0.031	2721 (98.1)	2725 (98.2)	0.011
Failed Bioprosthetic Valve, n (%)	Yes	78 ( 2.0)	137 ( 1.8)	-0.020	46 ( 1.7)	48 ( 1.7)	0.006

	<i>Level</i>	<i>Before Matching</i> <i>N=11600</i>			<i>After Matching</i> <i>N=5550</i>		
		<i>OAC(+)</i> <i>(N=3839)</i>	<i>DAPT(+)</i> <i>(N=7761)</i>	<i>Standardized</i> <i>Difference</i>	<i>OAC(+)</i> <i>(N=2775)</i>	<i>DAPT(+)</i> <i>(N=2775)</i>	<i>Standardized</i> <i>Difference</i>
Valve Type, n (%)	Balloon Expandable Valve	3308 (86.2)	6601 (85.1)	-0.032	2396 (86.3)	2403 (86.6)	0.007

BSA = body surface area. CIED = cardiac implantable electrical device. DAPT = dual antiplatelet therapy. GFR = glomerular filtration rate. LAD = left anterior descending artery. LVEF = left ventricular ejection fraction. MI = myocardial infarction. NYHA = New York Heart Association. OAC = oral anticoagulant. PAD = peripheral arterial disease. PCI = percutaneous coronary intervention. TAVR = transcatheter aortic valve replacement. TIA = transient ischemic attack. Only patients receiving exactly one therapy (DAPT or OAC) are considered for this matching.

**eTable 13. Propensity Matched Neurologic Outcomes (Femoral Cohort)**

Outcome	Level	Propensity matched on (Femoral Cohorts)		
		DAPT (N=31192)	OAC (N=22022)	DAPT/OAC (N=24668)
30 day Stroke	Censor	30768 (98.6%)	21698 (98.5%)	24317 (98.6%)
	Event	164 (0.53%)	120 (0.54%)	128 (0.52%)
	Death	260 (0.83%)	204 (0.93%)	223 (0.90%)
30 day TIA	Censor	30853 (98.9%)	21760 (98.8%)	24369 (98.8%)
	Event	60 (0.19%)	46 (0.21%)	55 (0.22%)
	Death	279 (0.89%)	216 (0.98%)	244 (0.99%)
30 day Stroke/TIA	Censor	30711 (98.5%)	21654 (98.3%)	24264 (98.4%)
	Event	222 (0.71%)	165 (0.75%)	181 (0.73%)
	Death	259 (0.83%)	203 (0.92%)	223 (0.90%)
30 day Ischemic Stroke	Censor	30788 (98.7%)	21714 (98.6%)	24334 (98.6%)
	Event	136 (0.44%)	99 (0.45%)	102 (0.41%)
	Death	268 (0.86%)	209 (0.95%)	232 (0.94%)
30 day Hemorrhagic Stroke	Censor	30896 (99.1%)	21792 (99.0%)	24413 (99.0%)
	Event	24 (0.08%)	18 (0.08%)	19 (0.08%)
	Death	272 (0.87%)	212 (0.96%)	236 (0.96%)
30 day Undetermined Stroke	Censor	30906 (99.1%)	21800 (99.0%)	24417 (99.0%)
	Event	6 (0.02%)	5 (0.02%)	8 (0.03%)
	Death	280 (0.90%)	217 (0.99%)	243 (0.99%)

Outcomes are 30 days from Discharge Date. DAPT = dual antiplatelet therapy. OAC = oral anticoagulant. TIA = transient ischemic attack.

**eTable 14. Propensity Matched Neurologic Outcomes (Non-Femoral Cohort)**

Outcome	Level	Propensity matched on (Non-femoral Cohorts)		
		DAPT (N=6338)	OAC (N=4608)	DAPT/OAC (N=5550)
30 day Stroke	Censor	6183 (97.6%)	4480 (97.2%)	5428 (97.8%)
	Event	43 (0.68%)	35 (0.76%)	37 (0.67%)
	Death	112 (1.77%)	93 (2.02%)	85 (1.53%)
30 day TIA	Censor	6202 (97.9%)	4499 (97.6%)	5445 (98.1%)
	Event	13 (0.21%)	7 (0.15%)	13 (0.23%)
	Death	123 (1.94%)	102 (2.21%)	92 (1.66%)
30 day Stroke/TIA	Censor	6172 (97.4%)	4473 (97.1%)	5417 (97.6%)
	Event	55 (0.87%)	42 (0.91%)	49 (0.88%)
	Death	111 (1.75%)	93 (2.02%)	84 (1.51%)
30 day Ischemic Stroke	Censor	6185 (97.6%)	4483 (97.3%)	5431 (97.9%)
	Event	35 (0.55%)	28 (0.61%)	32 (0.58%)
	Death	118 (1.86%)	97 (2.11%)	87 (1.57%)
30 day Hemorrhagic Stroke	Censor	6212 (98.0%)	4503 (97.7%)	5454 (98.3%)
	Event	7 (0.11%)	5 (0.11%)	4 (0.07%)
	Death	119 (1.88%)	100 (2.17%)	92 (1.66%)
30 day Undetermined Stroke	Censor	6214 (98.0%)	4506 (97.8%)	5456 (98.3%)
	Event	1 (0.02%)	2 (0.04%)	2 (0.04%)
	Death	123 (1.94%)	100 (2.17%)	92 (1.66%)

Outcomes are 30 days from Discharge Date. DAPT = dual antiplatelet therapy. OAC = oral anticoagulant. TIA = transient ischemic attack