

## Supplementary Online Content

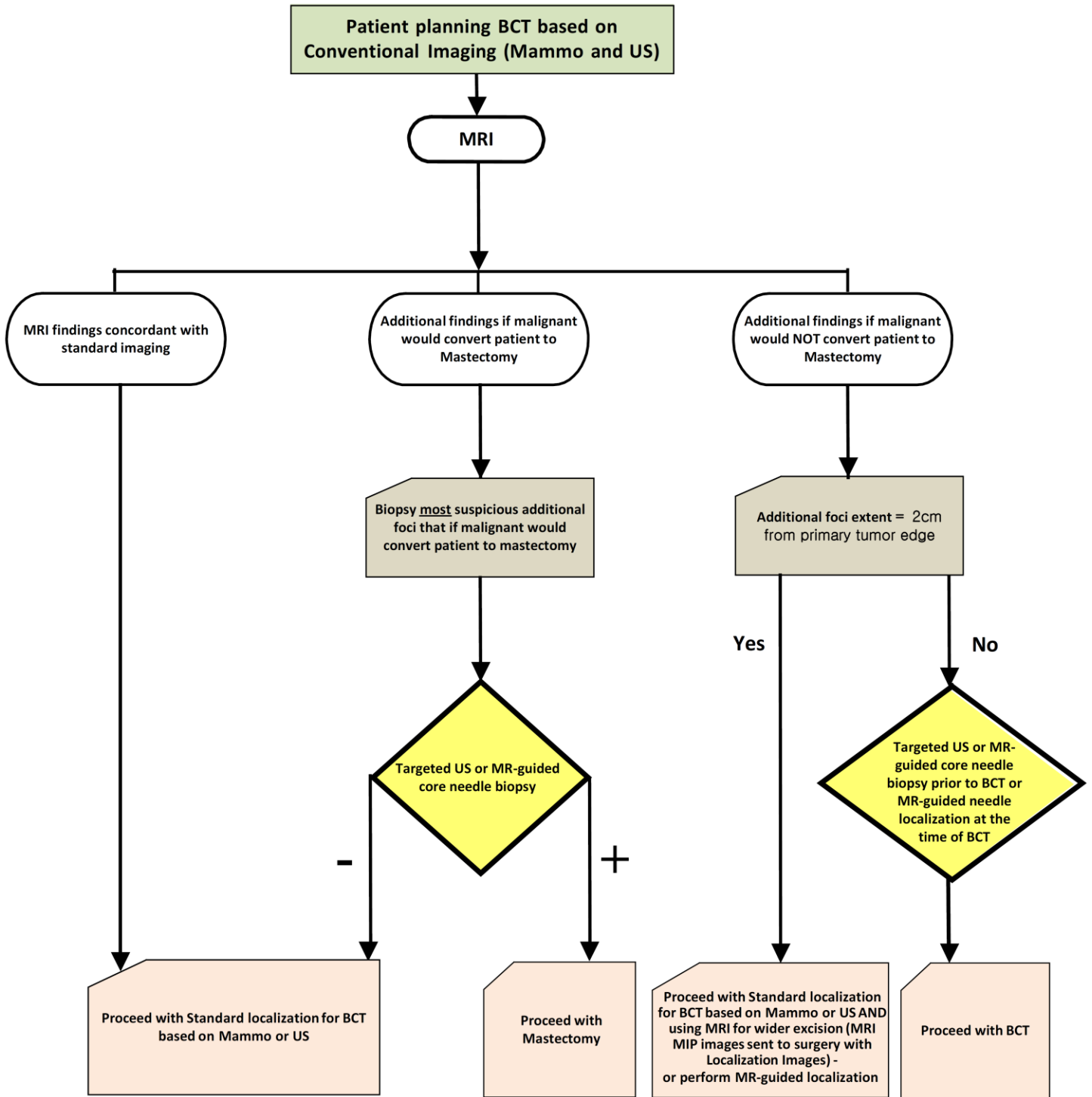
Lehman CD, Gatsonis C, Romanoff J, et al. Association of magnetic resonance imaging and a 12-gene expression assay with breast ductal carcinoma in situ treatment. *JAMA Oncol*. Published online January 17, 2019. doi:10.1001/jamaoncol.2018.6269

**eFigure.** MRI Findings Management Flowchart

**eTable.** Baseline Demographics and Diagnostic Core Needle Biopsy and Mammography Characteristics

This supplementary material has been provided by the authors to give readers additional information about their work.

**eFigure.** MRI Findings Management Flowchart



**eTable. Baseline Demographics and Diagnostic Core Needle Biopsy and Mammography Characteristics**

	All enrolled (n = 368)	Pure DCIS Pre-operative MRI Final surgery known (n = 339)	Radiotherapy recommendation based on DCIS Score (n = 171)
Age, median (range), years	59 (34, 87)	60 (34, 87)	60 (36, 87)
Race, No. (%)			
African descent	54 (15)	49 (14)	23 (13)
European descent	283 (77)	262 (77)	137 (80)
Other	31 (8)	28 (8)	11 (6)
Ethnicity, No. (%)			
Hispanic/Latino	21 (6)	21 (6)	8 (5)
Not Hispanic/Latino	328 (89)	302 (89)	155 (91)
Not reported/Unknown	19 (5)	16 (5)	8 (5)
Insurance status, No. (%)			
Private insurance	281 (76)	261 (77)	125 (73)
Medicare/Other government insurance	68 (18)	62 (18)	41 (24)
Medicaid/Uninsured	19 (5)	16 (5)	5 (3)
DCIS grade, No. (%)			
Low nuclear	62 (17)	54 (16)	23 (13)
Intermediate nuclear	149 (40)	136 (40)	72 (42)
High nuclear <sup>a</sup>	144 (39)	137 (40)	72 (42)
Not reported/Unknown	13 (4)	12 (4)	4 (2)
ER status, No. (%)			
Positive	282 (77)	258 (76)	137 (80)
Negative	48 (13)	47 (14)	19 (11)
Unknown	38 (10)	34 (10)	15 (9)
PR status, No. (%)			
Positive	224 (61)	202 (60)	109 (64)
Negative	81 (22)	79 (23)	31 (18)
Unknown	63 (17)	58 (17)	31 (18)
Breast density, No. (%)			
Almost entirely fat (<25% fibroglandular)	10 (3)	8 (2)	5 (3)
Scattered fibroglandular densities (25%-50% fibroglandular)	153 (42)	143 (42)	75 (44)
Heterogeneously dense (51%-75% fibroglandular)	134 (36)	123 (36)	61 (36)
Extremely dense (>75% fibroglandular)	20 (5)	17 (5)	7 (4)
Not reported/Unknown	51 (14)	48 (14)	23 (13)
Longest diameter, median (IQR), mm	11 (6, 20)	11 (6, 19.5)	11 (6, 19)
Lesion type <sup>b</sup> , No. (%)			
Calcification(s)	305 (79)	281 (79)	145 (82)
Mass	28 (7)	24 (7)	10 (6)
Asymmetry/Focal asymmetry	21 (5)	19 (5)	5 (3)
Architectural distortion	6 (2)	6 (2)	4 (2)
Other	16 (4)	16 (5)	8 (5)
Not reported/Unknown	9 (2)	8 (2)	4 (2)

Abbreviations: DCIS, ductal carcinoma in situ; ER, estrogen-receptor; IQR, interquartile range; MRI, magnetic resonance imaging; PR, progesterone-receptor.

<sup>a</sup> For one patient the DCIS grade was assessed as “Intermediate to high nuclear”. This is counted as High nuclear.

<sup>b</sup> 15/368 patients had multiple lesions reported on the diagnostic mammogram. Thus, the lesion type counts are greater than the number of patients in each column.