

Supplementary Online Content

Mohammad MA, Koul S, Rylance R, et al. Association of weather with day-to-day incidence of myocardial infarction: a SWEDEHEART nationwide observational study. *JAMA Surg*. Published online October 24, 2018. doi:10.1001/jamacardio.2018.3466

eAppendix.

eTable 1. Baseline Demographics for Study Population

eTable 2. Average Weather Variable for Sweden and the 6 Healthcare Regions Stratified by Each Quarter

eTable 3. Results of Primary and Secondary Analyses Including Seasonal and Sensitivity Analyses

eTable 4. Results of Subgroup Analyses

eFigure 1. Nationwide Daily Incidence Rate of Myocardial Infarction by Air Pressure, δ Temperature, Humidity, Precipitation, Sunshine Duration, and Wind Velocity for STEMI and NSTEMI

eFigure 2. Incidence of Myocardial Infarction by Air Temperature and Region

eFigure 3. Nationwide Daily Incidence Rate of Myocardial Infarction by Temperature With Lag Effect

eFigure 4. Lag of 1, 3, 5, and 7 Days

This supplementary material has been provided by the authors to give readers additional information about their work.

eTable 1. Baseline demographics for study population.

	Total MI	STEMI	NSTEMI
	<i>n=274029</i>	<i>n=92044</i>	<i>n=181985</i>
Age ± sd	71.7±12.2	69.2±12.5	73.0±11.8
Age ≥ 75 years	127825 (46.6)	34862 (37.9)	92963 (51.1)
Age <75 years	146200 (53.4)	57182 (62.1)	89018 (48.9)
BMI mean±sd	26.7±5.8	26.6±6.7	26.8±5.2
Sex			
Men	174576 (63.7)	61053 (66.3)	113523 (62.4)
Women	99453 (36.3)	30991 (33.7)	68462 (37.6)
EGFR<60 (%)	66351 (24.2)	16415 (17.8)	49936 (27.4)
Smoking			
Non-Smoker	196867 (71.8)	61389 (66.7)	135478 (74.4)
Current Smoker	53980 (19.7)	23821 (25.9)	30159 (16.6)
Past Medical History			
Diabetes	60134 (21.9)	15244 (16.6)	44890 (24.7)
Hypertension	119799 (43.7)	35184 (38.2)	84615 (46.5)
Coronary Artery Disease	97403 (35.5)	20512 (22.3)	76891 (42.3)
Myocardial Infarction	88325 (32.2)	18628 (20.2)	69697 (38.3)
PCI	32131 (11.7)	7409 (8.0)	24722 (13.6)
CABG	23273 (8.5)	3602 (3.9)	19671 (10.8)
Chronic HF	31858 (11.6)	5741 (6.2)	26117 (14.4)
Stroke	16721 (6.1)	3862 (4.2)	12859 (7.1)
Previous Medications			
Beta-blockers	117207 (42.8)	28885 (31.4)	88322 (48.5)
Calcium Antagonists	49613 (18.1)	13185 (14.3)	36428 (20.0)
Aspirin	119672 (43.7)	28200 (30.6)	91472 (50.3)
ACE-Inhibitor	86057 (31.4)	20305 (22.1)	65752 (36.1)
Statins	73271 (26.7)	16479 (17.9)	56792 (31.2)
Diuretics	84416 (30.8)	18486 (20.1)	65930 (36.2)
In-hospital Procedures			
Angiography	140093 (51.1)	55680 (60.5)	84413 (46.4)
PCI	107734 (39.3)	51923 (56.4)	55811 (30.7)
Regions			
Southeast	34358 (12.5)	12009 (13.0)	22349 (12.3)
South	49333 (18.0)	16865 (18.3)	32468 (17.8)
West	52413 (19.1)	17758 (19.3)	34655 (19.0)
Uppsala/Orebro	71978 (26.3)	24019 (26.1)	47959 (26.4)

North	23906 (8.7)	8005 (8.7)	15901 (8.7)
Stockholm	42041 (15.3)	13388 (14.5)	28653 (15.7)

MI = Myocardial Infarction; BMI = Body Mass Index; CABG = Coronary Artery Bypass Graft; EGFR = Estimated Glomerular Filtration Rate; NSTEMI = Non-ST-Elevation Myocardial Infarction; PCI = Percutaneous Coronary Intervention; STEMI = ST-Elevation Myocardial Infarction.

eTable 2.

Average weather variable for Sweden and the 6 healthcare regions stratified by each quarter.

Supplementary Table 1.	Air Temp. (°C)	Min air temp. (°C)	Max air Temp. (°C)	Eff. air Temp. (°C)	Delta Temp. (°C)	Wind (m/s)	Precipitation (mm)	Humidity (%)	Air Pressure (kPa)	Sunshine duration (h)
Sweden										
Jan-March	-1,7	-5,1	1,6	-7,3	6,8	6,5	1,4	84,3	1011,9	3,0
Apr-June	10,2	5,0	15,3	3,4	10,3	6,0	1,8	74,0	1013,4	8,1
Jul-Sep	15,0	10,5	19,7	5,9	9,3	5,6	2,4	80,7	1012,3	6,8
Oct-Dec	2,6	-0,2	5,3	-2,3	5,6	6,5	2,2	88,8	1010,9	2,0
South										
Jan-March	0,6	-2,3	3,6	-5,0	5,9	7,7	1,6	85,9	1013,6	2,9
Apr-June	11,2	6,2	16,4	3,7	10,2	6,7	1,8	76,3	1014,3	8,0
Jul-Sep	15,8	11,4	20,6	6,2	9,2	6,4	2,4	81,1	1013,5	6,8
Oct-Dec	4,7	2,0	7,3	-0,6	5,3	7,5	2,2	88,6	1012,6	2,0
Southeast										
Jan-March	-1,0	-4,2	2,1	-6,7	6,4	6,7	1,1	85,8	1012,7	2,9
Apr-June	10,3	4,9	15,5	3,2	10,6	6,0	1,7	74,3	1013,7	8,1
Jul-Sep	15,0	10,3	19,7	5,8	9,4	5,7	2,3	81,7	1012,7	6,7
Oct-Dec	3,1	0,4	5,8	-2,0	5,4	6,6	1,9	90,4	1011,8	2,0
West										
Jan-March	-0,2	-3,2	2,8	-5,6	6,0	6,4	1,9	84,8	1012,4	2,9
Apr-June	10,9	6,0	15,8	3,7	9,8	5,6	2,2	74,9	1013,5	7,7
Jul-Sep	15,4	11,2	19,9	6,1	8,7	5,2	2,9	81,3	1012,5	6,4
Oct-Dec	3,9	1,2	6,5	-1,2	5,3	6,3	3,0	89,1	1011,3	2,0
Stockholm										
Jan-March	-1,0	-4,1	1,9	-6,6	6,0	6,4	1,1	82,8	1011,7	2,9
Apr-June	10,4	5,5	15,4	2,8	10,0	5,9	1,3	74,1	1013,4	9,1
Jul-Sep	15,7	11,5	20,3	5,8	8,8	5,5	2,0	79,6	1012,3	7,8

Oct-Dec	3,7	1,1	6,1	-1,5	4,9	6,6	1,8	87,3	1011, 0	2,1
Uppsala/Örebro										
Jan-March	-2,4	-6,0	1,1	-7,9	7,1	5,7	1,2	83,2	1011, 5	3,2
Apr-June	10,1	4,8	15,5	3,3	10,7	5,7	1,7	71,6	1013, 2	8,1
Jul-Sep	14,9	10,1	19,8	5,7	9,7	5,1	2,3	79,9	1011, 9	7,0
Oct-Dec	1,9	-1,1	4,6	-2,9	5,7	5,7	1,9	89,0	1010, 6	2,2
Northern										
Jan-March	-6,3	-11,1	-2,2	-13,1	8,9	6,6	1,1	83,1	1009, 5	3,0
Apr-June	7,2	2,1	12,1	0,5	9,9	6,2	1,4	74,6	1012, 3	8,0
Jul-Sep	13,2	8,9	17,7	4,9	8,8	6,2	2,3	80,8	1010, 9	6,7
Oct-Dec	-0,6	-4,0	2,4	-6,6	6,4	7,0	1,7	86,8	1008, 8	2,0

eTable 3. Results.

Meteorological variable	Unadjusted						Adjusted					
	Total MI		NSTEMI		STEMI		Total MI		NSTEMI		STEMI	
	IRR (95%CI)	P-value	IRR (95%CI)	P-value	IRR (95%CI)	P-value	IRR (95%CI)	P-value	IRR (95%CI)	P-value	IRR (95%CI)	P-value
Min. Air Temp. (°C)	0.972 (0.967-0.977)	<0.0001	0.976 (0.97-0.982)	<0.0001	0.964 (0.958-0.971)	<0.0001	0.974 (0.969-0.98)	<0.0001	0.981 (0.973-0.988)	<0.0001	0.962 (0.954-0.97)	<0.0001
Precipitation (mm)	0.992 (0.987-0.997)	0.0096	0.993 (0.987-0.999)	0.1661	0.99 (0.984-0.997)	0.0171	0.989 (0.983-0.995)	0.0015	0.99 (0.983-0.998)	0.0395	0.987 (0.979-0.996)	0.0203
Air Humidity (%)	1 (0.995-1.005)	0.9786	0.999 (0.992-1.005)	0.6643	1.003 (0.996-1.01)	0.3888	0.999 (0.988-1.01)	0.8419	0.999 (0.985-1.013)	0.8703	0.999 (0.984-1.015)	0.9071
Air Pressure (kPa)	0.993 (0.988-0.998)	0.0137	0.996 (0.99-1.002)	0.6012	0.987 (0.981-0.994)	0.0009	0.987 (0.981-0.993)	0.0001	0.99 (0.983-0.998)	0.0395	0.981 (0.972-0.989)	<0.0001
Wind (m/s)	1.012 (1.007-1.017)	<0.0001	1.012 (1.006-1.018)	0.0012	1.013 (1.006-1.02)	0.0009	1.012 (1.005-1.018)	0.0015	1.012 (1.004-1.02)	0.0128	1.01 (1.001-1.019)	0.1189
Sunshine Duration (h)	0.987 (0.983-0.992)	<0.0001	0.988 (0.982-0.994)	0.0007	0.986 (0.979-0.993)	0.0007	0.986 (0.973-0.999)	0.0874	0.978 (0.962-0.994)	0.0381	1.002 (0.983-1.021)	0.9071
Delta Air Temp. (°C)	0.999 (0.994-1.004)	0.9786	1.003 (0.997-1.009)	0.6643	0.992 (0.986-0.999)	0.0461	1.016 (1.007-1.025)	0.0029	1.023 (1.011-1.035)	0.001	1.002 (0.989-1.015)	0.9071
Snow (mm)*	1.008 (1.003-1.014)	0.01	1.006 (0.999-1.012)	0.45	1.013 (1.006-1.02)	0.001	1.008 (1.001-1.015)	0.48	1.006 (0.997-1.015)	0.338	1.012 (1.002-1.022)	0.115
Average Air Temp. (°C)	0.974 (0.969-0.979)	<0.0001	0.979 (0.972-0.985)	<0.0001	0.965 (0.959-0.972)	<0.0001						
Max. Air Temp. (°C)	0.976 (0.971-0.98)	<0.0001	0.98 (0.974-0.987)	<0.0001	0.966 (0.96-0.973)	<0.0001						
Effective Air Temp. (°C)	0.992 (0.987-0.997)	0.0137	0.995 (0.988-1.002)	0.6012	0.986 (0.979-0.993)	0.0009						
Regions												
South												
Min. Air Temp. (°C)	0.97 (0.961-0.98)	<0.0001	0.975 (0.963-0.986)	0.0003	0.962 (0.948-0.977)	<0.0001	0.971 (0.961-0.981)	<0.0001	0.975 (0.963-0.988)	0.0011	0.963 (0.947-0.979)	0.0001
Precipitation (mm)	0.987 (0.977-0.997)	0.0642	0.989 (0.977-1.001)	0.4251	0.983 (0.968-0.999)	0.2439	0.991 (0.979-1.002)	0.6253	0.994 (0.98-1.008)	0.9562	0.985 (0.967-1.003)	0.5231
Air Humidity (%)	0.994 (0.985-1.004)	0.7279	0.994 (0.982-1.006)	0.7931	0.995 (0.979-1.01)	0.8083	1.004 (0.987-1.021)	0.8059	0.999 (0.978-1.021)	0.9562	1.013 (0.985-1.041)	0.9907
Air Pressure (kPa)	1.006 (0.996-1.015)	0.7279	1.007 (0.995-1.019)	0.7931	1.003 (0.987-1.018)	0.8083	0.994 (0.983-1.006)	0.8059	0.994 (0.98-1.008)	0.9562	0.994 (0.976-1.013)	0.9907
Wind (m/s)	1.002 (0.992-1.012)	0.7279	0.996 (0.984-1.008)	0.7931	1.013 (0.998-1.029)	0.5129	1.009 (0.996-1.021)	0.8059	0.999 (0.984-1.014)	0.9562	1.028 (1.008-1.049)	0.0407
Sunshine Duration (h)	0.998 (0.989-1.008)	0.7279	0.998 (0.986-1.01)	0.7931	0.998 (0.983-1.014)	0.8083	0.997 (0.977-1.018)	0.8059	0.995 (0.97-1.021)	0.9562	1.002 (0.969-1.036)	0.9907
Delta Air Temp. (°C)	1.011 (1.001-1.021)	0.1626	1.012 (1-1.024)	0.388	1.01 (0.994-1.025)	0.8083	1.016 (0.998-1.033)	0.5694	1.011 (0.989-1.032)	0.9562	1.025 (0.997-1.054)	0.469
Snow (mm)*	1.007 (0.993-1.021)	0.7279	1.009 (0.992-1.026)	0.7931	1.003 (0.981-1.024)	0.8083	1.006 (0.99-1.023)	0.8059	1.01 (0.99-1.03)	0.9562	1 (0.974-1.027)	0.9907
Average Air Temp. (°C)	0.977 (0.967-0.986)	<0.0001	0.981 (0.969-0.993)	0.0139	0.969 (0.954-0.983)	0.0004						

Max. Air Temp. (°C)	0.98 (0.971-0.99)	0.0006	0.984 (0.973-0.996)	0.0882	0.973 (0.958-0.988)	0.0035
Effective Air Temp. (°C)	1.003 (0.991-1.015)	0.8958	1.003 (0.988-1.018)	0.7657	1.002 (0.984-1.021)	0.8087

Southeast

Min. Air Temp. (°C)	0.975 (0.964-0.985)	<0.0001	0.974 (0.961-0.987)	0.0012	0.976 (0.959-0.994)	0.066	0.972 (0.96-0.984)	<0.0001	0.973 (0.958-0.988)	0.0026	0.971 (0.952-0.991)	0.0403
Precipitation (mm)	0.991 (0.98-1.002)	0.6722	0.989 (0.976-1.003)	0.8995	0.993 (0.975-1.011)	0.8557	0.992 (0.979-1.005)	0.845	0.993 (0.977-1.009)	0.9983	0.99 (0.969-1.011)	0.8457
Air Humidity (%)	1 (0.989-1.01)	0.9564	0.998 (0.985-1.012)	0.8995	1.002 (0.984-1.02)	0.8557	0.998 (0.975-1.02)	0.845	0.998 (0.971-1.027)	0.9983	0.996 (0.959-1.035)	0.8457
Air Pressure (kPa)	0.993 (0.982-1.004)	0.9564	0.999 (0.986-1.013)	0.8995	0.982 (0.964-1)	0.3094	0.986 (0.973-0.999)	0.2533	0.99 (0.974-1.007)	0.9983	0.978 (0.956-0.999)	0.3119
Wind (m/s)	1.006 (0.995-1.017)	0.9564	1.001 (0.988-1.015)	0.8995	1.016 (0.997-1.034)	0.5582	1.003 (0.989-1.016)	0.845	1.001 (0.984-1.017)	0.9983	1.006 (0.984-1.029)	0.8457
Sunshine Duration (h)	0.997 (0.986-1.008)	0.9564	0.997 (0.983-1.011)	0.8995	0.997 (0.978-1.016)	0.8557	1.01 (0.986-1.035)	0.845	1 (0.97-1.031)	0.9983	1.03 (0.988-1.073)	0.805
Delta Air Temp. (°C)	0.997 (0.986-1.008)	0.9564	1.002 (0.989-1.016)	0.8995	0.988 (0.97-1.006)	0.7894	0.992 (0.972-1.012)	0.845	1.004 (0.979-1.029)	0.9983	0.971 (0.939-1.004)	0.5209
Snow (mm)*	1 (0.985-1.016)	0.9564	0.992 (0.973-1.011)	0.8995	1.016 (0.992-1.041)	0.7894	1.002 (0.982-1.023)	0.845	0.997 (0.972-1.022)	0.9983	1.011 (0.978-1.046)	0.8457
Average Air Temp. (°C)	0.976 (0.966-0.987)	0.0001	0.977 (0.964-0.99)	0.0057	0.975 (0.958-0.993)	0.056						
Max. Air Temp. (°C)	0.977 (0.967-0.988)	0.0003	0.979 (0.966-0.992)	0.0173	0.974 (0.957-0.992)	0.0479						
Effective Air Temp. (°C)	1.007 (0.994-1.02)	0.8958	1.015 (0.998-1.031)	0.5447	0.992 (0.971-1.014)	0.8087						

West

Min. Air Temp. (°C)	0.977 (0.968-0.986)	<0.0001	0.981 (0.969-0.992)	0.0124	0.969 (0.955-0.984)	0.0004	0.977 (0.967-0.987)	<0.0001	0.983 (0.97-0.995)	0.0532	0.965 (0.95-0.981)	0.0002
Precipitation (mm)	0.991 (0.982-1.001)	0.4034	0.992 (0.98-1.004)	0.8698	0.991 (0.976-1.006)	0.933	0.992 (0.981-1.003)	0.646	0.992 (0.978-1.006)	0.832	0.991 (0.973-1.01)	0.462
Air Humidity (%)	0.989 (0.98-0.999)	0.1958	0.987 (0.975-0.999)	0.223	0.994 (0.979-1.009)	0.933	0.987 (0.969-1.004)	0.646	0.986 (0.965-1.008)	0.8272	0.988 (0.961-1.017)	0.462
Air Pressure (kPa)	0.996 (0.987-1.005)	0.5591	1 (0.988-1.012)	0.991	0.988 (0.974-1.003)	0.7115	0.984 (0.973-0.996)	0.0462	0.988 (0.974-1.002)	0.5056	0.977 (0.959-0.995)	0.0721
Wind (m/s)	1.003 (0.993-1.012)	0.5591	1.002 (0.99-1.014)	0.991	1.004 (0.99-1.02)	0.933	0.999 (0.988-1.011)	0.911	1.003 (0.988-1.017)	0.832	0.993 (0.974-1.012)	0.462
Sunshine Duration (h)	0.997 (0.987-1.006)	0.5591	0.995 (0.983-1.007)	0.991	1.001 (0.985-1.016)	0.933	0.99 (0.972-1.01)	0.911	0.974 (0.951-0.998)	0.2204	1.024 (0.993-1.056)	0.462
Delta Air Temp. (°C)	1.007 (0.997-1.016)	0.5591	1.015 (1.003-1.027)	0.1393	0.992 (0.977-1.007)	0.933	1.004 (0.988-1.02)	0.911	1.021 (1.001-1.041)	0.2361	0.971 (0.947-0.996)	0.1112
Snow (mm)*	1.012 (0.999-1.025)	0.4034	1 (0.983-1.017)	0.991	1.034 (1.014-1.054)	0.0055	1.014 (0.999-1.03)	0.4538	1.002 (0.983-1.022)	0.832	1.037 (1.012-1.062)	0.0237
Average Air Temp. (°C)	0.979 (0.97-0.989)	0.0002	0.984 (0.973-0.996)	0.0823	0.97 (0.956-0.985)	0.0005						
Max. Air Temp. (°C)	0.983 (0.974-0.993)	0.0037	0.99 (0.978-1.002)	0.5513	0.97 (0.956-0.985)	0.0006						
Effective Air Temp. (°C)	0.999 (0.988-1.011)	0.8958	1.003 (0.988-1.018)	0.7657	0.992 (0.974-1.011)	0.8087						

Stockholm

Min. Air Temp. (°C)	0.965 (0.955-0.975)	<0.0001	0.97 (0.958-0.982)	<0.0001	0.955 (0.939-0.971)	<0.0001	0.96 (0.949-0.972)	<0.0001	0.964 (0.95-0.979)	<0.0001	0.952 (0.933-0.972)	<0.0001
Precipitation (mm)	0.997 (0.987-1.008)	0.8687	1 (0.987-1.013)	0.9976	0.992 (0.975-1.009)	0.833	0.989 (0.978-1.001)	0.2519	0.991 (0.977-1.006)	0.6929	0.986 (0.966-1.006)	0.9775
Air Humidity (%)	1.014 (1.003-1.024)	0.0325	1.017 (1.004-1.029)	0.0313	1.007 (0.99-1.025)	0.833	1.027 (1.009-1.046)	0.0208	1.04 (1.018-1.063)	0.0026	1 (0.97-1.031)	0.988
Air Pressure (kPa)	0.984 (0.974-0.994)	0.0081	0.983 (0.97-0.995)	0.0313	0.986 (0.97-1.003)	0.4534	0.987 (0.975-0.999)	0.1538	0.987 (0.973-1.002)	0.3507	0.987 (0.967-1.008)	0.988
Wind (m/s)	1.025 (1.015-1.036)	<0.0001	1.026 (1.014-1.039)	0.0003	1.024 (1.006-1.041)	0.0488	1.03 (1.016-1.043)	0.0001	1.033 (1.017-1.049)	0.0004	1.022 (1.001-1.045)	0.3142
Sunshine Duration (h)	0.979 (0.968-0.989)	0.0004	0.979 (0.966-0.992)	0.007	0.978 (0.961-0.995)	0.083	1.023 (1.001-1.046)	0.1538	1.031 (1.004-1.059)	0.1149	1.007 (0.971-1.044)	0.988
Delta Air Temp. (°C)	0.983 (0.973-0.993)	0.0052	0.983 (0.971-0.996)	0.0313	0.981 (0.965-0.998)	0.1604	0.996 (0.98-1.014)	0.6847	0.999 (0.979-1.02)	0.932	0.991 (0.963-1.02)	0.988
Snow (mm)*	1.001 (0.987-1.016)	0.8687	1.002 (0.985-1.02)	0.9976	0.998 (0.974-1.023)	0.8964	0.992 (0.974-1.011)	0.6847	0.993 (0.972-1.016)	0.932	0.99 (0.958-1.022)	0.988
Average Air Temp. (°C)	0.963 (0.954-0.973)	<0.0001	0.968 (0.956-0.98)	<0.0001	0.954 (0.938-0.97)	<0.0001						
Max. Air Temp. (°C)	0.963 (0.953-0.973)	<0.0001	0.967 (0.955-0.98)	<0.0001	0.954 (0.938-0.97)	<0.0001						
Effective Air Temp. (°C)	1.011 (0.998-1.024)	0.6092	1.012 (0.997-1.028)	0.7379	1.007 (0.986-1.029)	0.8087						

Uppsala/orebro

Min. Air Temp. (°C)	0.967 (0.96-0.975)	<0.0001	0.973 (0.963-0.982)	<0.0001	0.957 (0.945-0.969)	<0.0001	0.966 (0.958-0.975)	<0.0001	0.975 (0.965-0.986)	<0.0001	0.949 (0.936-0.963)	<0.0001
Precipitation (mm)	0.989 (0.982-0.997)	0.0498	0.99 (0.98-0.999)	0.2193	0.989 (0.976-1.002)	0.3989	0.991 (0.982-1)	0.1827	0.991 (0.979-1.002)	0.3299	0.991 (0.975-1.006)	0.6904
Air Humidity (%)	1 (0.992-1.008)	0.9811	0.996 (0.986-1.006)	0.7708	1.008 (0.996-1.022)	0.3989	0.992 (0.976-1.009)	0.6124	0.977 (0.958-0.997)	0.1528	1.024 (0.996-1.052)	0.4601
Air Pressure (kPa)	0.994 (0.986-1.002)	0.3697	0.996 (0.986-1.006)	0.7708	0.99 (0.977-1.003)	0.3989	0.989 (0.979-0.998)	0.0722	0.989 (0.977-1)	0.2861	0.988 (0.973-1.003)	0.4837
Wind (m/s)	1.008 (1.001-1.016)	0.1313	1.008 (0.998-1.018)	0.4573	1.01 (0.997-1.023)	0.3989	1.009 (1-1.02)	0.1864	1.003 (0.991-1.016)	0.6564	1.022 (1.006-1.039)	0.0616
Sunshine Duration (h)	0.987 (0.979-0.995)	0.0075	0.987 (0.977-0.997)	0.0602	0.987 (0.974-1)	0.3426	0.978 (0.962-0.995)	0.0579	0.964 (0.944-0.985)	0.0051	1.006 (0.978-1.035)	0.8002
Delta Air Temp. (°C)	1 (0.992-1.008)	0.9811	1.001 (0.992-1.011)	0.7708	0.996 (0.984-1.009)	0.5749	1.018 (1.004-1.032)	0.0579	1.016 (0.999-1.033)	0.288	1.023 (1-1.046)	0.3045
Snow (mm)*	1.012 (1.001-1.023)	0.128	1.011 (0.997-1.025)	0.4573	1.015 (0.998-1.032)	0.3989	1.004 (0.989-1.019)	0.6124	1.004 (0.986-1.023)	0.6564	1.003 (0.979-1.028)	0.8002
Average Air Temp. (°C)	0.97 (0.963-0.978)	<0.0001	0.975 (0.966-0.985)	<0.0001	0.959 (0.947-0.972)	<0.0001						
Max. Air Temp. (°C)	0.972 (0.964-0.979)	<0.0001	0.977 (0.967-0.986)	<0.0001	0.961 (0.949-0.974)	<0.0001						
Effective Air Temp. (°C)	0.987 (0.978-0.996)	0.033	0.995 (0.984-1.007)	0.7657	0.971 (0.957-0.986)	0.0007						

North

Min. Air Temp. (°C)	0.995 (0.982-1.009)	0.8565	1.003 (0.986-1.021)	0.7011	0.98 (0.958-1.001)	0.3379	0.988 (0.971-1.005)	0.4922	0.997 (0.976-1.018)	0.8773	0.971 (0.944-0.998)	0.2404
Precipitation (mm)	1.011 (0.997-1.025)	0.7908	1.011 (0.994-1.028)	0.7011	1.01 (0.988-1.032)	0.8039	0.999 (0.984-1.015)	0.9391	0.998 (0.98-1.018)	0.8773	1.001 (0.975-1.026)	0.966
Air Humidity (%)	1.016 (1.002-1.031)	0.1762	1.021 (1.004-1.039)	0.1287	1.007 (0.985-1.03)	0.8039	1.062 (1.038-1.086)	<0.0001	1.083 (1.054-1.114)	<0.0001	1.02 (0.983-1.058)	0.8888

Air Pressure (kPa)	0.985 (0.972-0.999)	0.271	0.991 (0.974-1.008)	0.7011	0.975 (0.954-0.997)	0.2003	0.999 (0.984-1.015)	0.9391	1.008 (0.989-1.027)	0.8773	0.982 (0.958-1.007)	0.7932
Wind (m/s)	1.048 (1.034-1.063)	<0.0001	1.054 (1.037-1.072)	<0.0001	1.036 (1.014-1.059)	0.0122	1.063 (1.046-1.081)	<0.0001	1.077 (1.055-1.098)	<0.0001	1.037 (1.01-1.065)	0.05
Sunshine Duration (h)	0.994 (0.98-1.008)	0.8565	0.996 (0.979-1.013)	0.7011	0.99 (0.967-1.012)	0.8039	1.041 (1.014-1.069)	0.0184	1.049 (1.015-1.083)	0.0245	1.025 (0.982-1.07)	0.8888
Delta Air Temp. (°C)	1.001 (0.987-1.015)	0.8565	1.003 (0.986-1.021)	0.7011	0.997 (0.975-1.019)	0.8039	1.018 (0.997-1.039)	0.3411	1.028 (1.002-1.054)	0.17	0.999 (0.966-1.033)	0.966
Snow (mm)*	1.042 (1.023-1.062)	0.0002	1.041 (1.017-1.065)	0.0064	1.045 (1.016-1.076)	0.023	1.037 (1.008-1.067)	0.0643	1.032 (0.997-1.068)	0.2855	1.045 (1-1.093)	0.307
Average Air Temp. (°C)	0.996 (0.983-1.01)	0.8565	1.005 (0.988-1.022)	0.7011	0.98 (0.958-1.001)	0.3379						
Max. Air Temp. (°C)	0.996 (0.982-1.01)	0.8565	1.005 (0.988-1.022)	0.7011	0.979 (0.958-1.001)	0.3379						
Effective Air Temp. (°C)	0.997 (0.981-1.013)	0.8958	1.003 (0.984-1.023)	0.7657	0.984 (0.96-1.009)	0.8087						

Season

Jan-mars

Min. Air Temp. (°C)	1.001(0.987-1.016)	0.883	1.001(0.983-1.02)	0.9089	1.001(0.983-1.021)	0.9588	1.025(1.009-1.041)	0.0431	1.038(1.019-1.058)	0.0031	0.999(0.972-1.026)	0.9466
Precipitation (mm)	1.007(0.993-1.02)	0.883	1.008(0.991-1.025)	0.9089	1.004(0.987-1.022)	0.9588	0.996(0.978-1.015)	0.8608	1(0.978-1.023)	0.9975	0.989(0.958-1.021)	0.9466
Air Humidity (%)	1.004(0.992-1.015)	0.883	1.004(0.989-1.019)	0.9089	1.003(0.988-1.018)	0.9588	0.998(0.98-1.017)	0.8608	0.992(0.971-1.015)	0.9975	1.01(0.979-1.043)	0.9466
Air Pressure (kPa)	0.997(0.989-1.005)	0.883	0.999(0.988-1.009)	0.9089	0.993(0.983-1.004)	0.9588	0.996(0.989-1.004)	0.8608	0.998(0.989-1.008)	0.9975	0.993(0.98-1.006)	0.9466
Wind (m/s)	0.999(0.99-1.008)	0.883	0.998(0.987-1.01)	0.9089	1(0.988-1.011)	0.9588	0.996(0.987-1.005)	0.8608	0.993(0.982-1.004)	0.9975	1.002(0.986-1.018)	0.9466
Sunshine Duration (h)	0.99(0.976-1.004)	0.883	0.986(0.968-1.004)	0.9089	0.998(0.978-1.017)	0.9588	0.973(0.95-0.996)	0.3168	0.954(0.926-0.982)	0.0335	1.011(0.97-1.053)	0.9466
Delta Air Temp. (°C)	1.006(0.995-1.018)	0.883	1.011(0.997-1.026)	0.9089	0.997(0.983-1.012)	0.9588	1.026(1.012-1.04)	0.0051	1.04(1.023-1.057)	0.0001	0.998(0.975-1.022)	0.9466
Snow (mm)*	1.005(0.998-1.012)	0.883	1.005(0.996-1.015)	0.9089	1.004(0.994-1.014)	0.9588	1.006(0.996-1.015)	0.8608	1.006(0.994-1.018)	0.9975	1.005(0.989-1.022)	0.9466
Average Air Temp. (°C)	1.008(0.991-1.026)	0.883	1.012(0.989-1.035)	0.9089	1.002(0.979-1.025)	0.9588						
Max. Air Temp. (°C)	1.01(0.99-1.029)	0.883	1.015(0.99-1.041)	0.9089	0.999(0.973-1.025)	0.9588						
Effective Air Temp. (°C)	1.006(0.993-1.018)	0.883	1.008(0.991-1.025)	0.9089	1(0.984-1.017)	0.9588						

Apr-June

Min. Air Temp. (°C)	0.958(0.944-0.973)	<0.0001	0.96(0.941-0.98)	0.0037	0.954(0.934-0.976)	0.0012	0.968(0.953-0.982)	0.0004	0.976(0.958-0.994)	0.1633	0.951(0.927-0.976)	0.0043
Precipitation (mm)	0.973(0.963-0.982)	<0.0001	0.974(0.962-0.987)	0.0029	0.97(0.956-0.984)	0.0012	0.976(0.966-0.986)	0.0002	0.981(0.969-0.994)	0.0816	0.965(0.948-0.983)	0.0049
Air Humidity (%)	0.981(0.973-0.99)	0.0009	0.978(0.966-0.989)	0.0047	0.988(0.976-1.001)	0.9588	0.99(0.974-1.007)	0.8608	0.978(0.958-0.998)	0.4164	1.015(0.987-1.045)	0.9466
Air Pressure (kPa)	1.008(0.996-1.021)	0.883	1.014(0.997-1.031)	0.9089	0.998(0.98-1.016)	0.9588	0.971(0.957-0.985)	0.0013	0.975(0.958-0.992)	0.0976	0.962(0.939-0.986)	0.058
Wind (m/s)	0.99(0.978-1.001)	0.883	0.984(0.969-0.998)	0.9057	1.002(0.985-1.018)	0.9588	0.993(0.98-1.005)	0.8608	0.983(0.968-0.999)	0.4164	1.012(0.99-1.034)	0.9466

Sunshine Duration (h)	1.009(1-1.019)	0.883	1.01(0.998-1.022)	0.9089	1.009(0.995-1.023)	0.9588	0.984(0.966-1.003)	0.8608	0.971(0.949-0.993)	0.2092	1.012(0.98-1.045)	0.9466
Delta Air Temp. (°C)	1.024(1.014-1.035)	0.0001	1.03(1.016-1.043)	0.0007	1.013(0.999-1.028)	0.9588	1.025(1.007-1.043)	0.1337	1.028(1.005-1.051)	0.2594	1.019(0.988-1.052)	0.9466
Average Air Temp. (°C)	0.973(0.958-0.989)	0.0225	0.978(0.958-0.998)	0.9089	0.964(0.943-0.986)	0.0482						
Max. Air Temp. (°C)	0.985(0.97-1.001)	0.883	0.992(0.972-1.012)	0.9089	0.972(0.951-0.994)	0.4093						
Effective Air Temp. (°C)	0.988(0.967-1.01)	0.883	0.988(0.96-1.017)	0.9089	0.988(0.958-1.02)	0.9588						

July-Sept

Min. Air Temp. (°C)	0.958(0.936-0.98)	0.0078	0.975(0.947-1.005)	0.9089	0.924(0.895-0.953)	<0.0001	0.948(0.929-0.968)	<0.0001	0.97(0.946-0.995)	0.2842	0.905(0.873-0.938)	<0.0001
Precipitation (mm)	0.995(0.986-1.003)	0.883	0.995(0.984-1.005)	0.9089	0.995(0.983-1.006)	0.9588	0.987(0.978-0.995)	0.0663	0.984(0.973-0.994)	0.0664	0.993(0.977-1.008)	0.9466
Air Humidity (%)	1.01(0.996-1.023)	0.883	1.011(0.993-1.028)	0.9089	1.008(0.99-1.027)	0.9588	1.03(1.006-1.054)	0.2249	1.045(1.015-1.075)	0.0657	1.001(0.961-1.043)	0.9466
Air Pressure (kPa)	0.999(0.986-1.012)	0.883	1.005(0.988-1.022)	0.9089	0.988(0.97-1.006)	0.9588	1.006(0.991-1.021)	0.8608	1.013(0.994-1.031)	0.9975	0.992(0.967-1.018)	0.9466
Wind (m/s)	1.019(1.007-1.032)	0.0539	1.023(1.007-1.038)	0.1518	1.013(0.996-1.03)	0.9588	1.02(1.007-1.034)	0.069	1.032(1.015-1.049)	0.0045	0.997(0.974-1.021)	0.9466
Sunshine Duration (h)	0.982(0.972-0.992)	0.0161	0.978(0.965-0.991)	0.0267	0.99(0.976-1.005)	0.9588	1.012(0.99-1.034)	0.8608	1.003(0.977-1.03)	0.9975	1.03(0.991-1.07)	0.9466
Delta Air Temp. (°C)	0.989(0.977-1)	0.883	0.991(0.976-1.006)	0.9089	0.984(0.968-1)	0.9588	0.98(0.959-1.001)	0.8248	0.996(0.97-1.023)	0.9975	0.947(0.912-0.983)	0.1057
Average Air Temp. (°C)	0.948(0.927-0.971)	0.0003	0.966(0.938-0.996)	0.8015	0.913(0.885-0.943)	<0.0001						
Max. Air Temp. (°C)	0.952(0.931-0.973)	0.0004	0.969(0.942-0.997)	0.8934	0.918(0.891-0.947)	<0.0001						
Effective Air Temp. (°C)	0.928(0.866-0.995)	0.883	0.923(0.843-1.01)	0.9089	0.94(0.855-1.034)	0.9588						

Oct-Dec

Min. Air Temp. (°C)	0.993(0.98-1.007)	0.883	1.005(0.988-1.022)	0.9089	0.972(0.954-0.99)	0.0809	0.994(0.981-1.008)	0.8608	0.996(0.979-1.012)	0.9975	0.992(0.969-1.016)	0.9466
Precipitation (mm)	1.01(1.001-1.019)	0.883	1.011(0.999-1.023)	0.9089	1.009(0.996-1.022)	0.9588	0.99(0.98-1)	0.6133	0.993(0.981-1.005)	0.9975	0.983(0.966-1)	0.9466
Air Humidity (%)	0.996(0.98-1.013)	0.883	0.999(0.978-1.02)	0.9089	0.991(0.968-1.014)	0.9588	1.034(1.01-1.058)	0.0949	1.056(1.026-1.087)	0.0048	0.992(0.952-1.032)	0.9466
Air Pressure (kPa)	0.982(0.974-0.99)	0.0004	0.983(0.973-0.994)	0.0691	0.978(0.967-0.989)	0.0059	0.985(0.977-0.993)	0.0052	0.989(0.979-0.999)	0.4164	0.977(0.963-0.99)	0.0231
Wind (m/s)	1.018(1.01-1.027)	0.0012	1.021(1.01-1.032)	0.0081	1.013(1.001-1.026)	0.917	1.02(1.01-1.03)	0.0013	1.028(1.016-1.04)	0.0002	1.005(0.989-1.022)	0.9466
Sunshine Duration (h)	1.002(0.983-1.021)	0.883	1.008(0.984-1.032)	0.9089	0.99(0.962-1.017)	0.9588	1.01(0.983-1.037)	0.8608	1.034(1-1.068)	0.6046	0.963(0.919-1.009)	0.9466
Delta Air Temp. (°C)	1.03(1.015-1.045)	0.0018	1.031(1.012-1.05)	0.0388	1.028(1.008-1.049)	0.2315	1.039(1.024-1.055)	<0.0001	1.038(1.019-1.057)	0.002	1.042(1.016-1.07)	0.0411
Snow (mm)*	1.012(1.004-1.02)	0.0567	1.006(0.997-1.016)	0.9089	1.022(1.012-1.033)	0.0007	1.01(1.002-1.017)	0.2428	1.005(0.995-1.014)	0.9975	1.019(1.006-1.033)	0.1031
Average Air Temp. (°C)	1.002(0.987-1.017)	0.883	1.015(0.996-1.034)	0.9089	0.977(0.957-0.998)	0.8508						
Max. Air Temp. (°C)	1.006(0.99-1.023)	0.883	1.021(1-1.043)	0.9089	0.977(0.955-1)	0.9588						

Effective Air Temp. (°C)	0.997(0.985-1.008)	0.883	1.005(0.991-1.02)	0.9089	0.98(0.964-0.995)	0.3404
---------------------------------	--------------------	-------	-------------------	--------	-------------------	--------

Lag

Lag 1 days

Min. Air Temp. (°C)	0.968(0.963-0.973)	<0.0001	0.971(0.965-0.978)	<0.0001	0.962(0.955-0.968)	<0.0001	0.972(0.966-0.977)	<0.0001	0.977(0.969-0.984)	<0.0001	0.962(0.955-0.97)	<0.0001
Precipitation (mm)	0.996(0.992-1.001)	0.8918	0.995(0.989-1.001)	0.9729	0.999(0.993-1.006)	0.8248	0.998(0.993-1.004)	0.9542	0.998(0.99-1.005)	0.8848	1(0.991-1.008)	0.9202
Air Humidity (%)	1.003(0.998-1.008)	0.8918	1(0.994-1.007)	0.9729	1.008(1.001-1.015)	0.1975	0.996(0.985-1.007)	0.9542	1.002(0.988-1.016)	0.8848	0.985(0.97-1)	0.9202
Air Pressure (kPa)	0.998(0.994-1.003)	0.8918	1.003(0.997-1.01)	0.9729	0.988(0.982-0.995)	0.0124	0.996(0.99-1.001)	0.9542	0.999(0.992-1.007)	0.8848	0.988(0.979-0.996)	0.1133
Wind (m/s)	1.009(1.004-1.013)	0.0123	1.006(1-1.012)	0.9729	1.014(1.007-1.02)	0.0015	1.009(1.003-1.015)	0.1072	1.01(1.002-1.018)	0.2231	1.006(0.997-1.015)	0.9202
Sunshine Duration (h)	0.983(0.979-0.988)	<0.0001	0.986(0.98-0.992)	0.0002	0.978(0.971-0.984)	<0.0001	0.977(0.964-0.99)	0.0099	0.973(0.957-0.99)	0.0316	0.984(0.966-1.003)	0.9202
Delta Air Temp. (°C)	0.999(0.994-1.004)	0.8918	1.006(0.999-1.012)	0.9729	0.987(0.98-0.994)	0.0031	1.02(1.011-1.029)	0.0006	1.031(1.019-1.043)	<0.0001	0.999(0.986-1.012)	0.9202
Snow (mm)*	1.007(1.002-1.013)	0.1099	1.005(0.998-1.012)	0.9729	1.012(1.004-1.019)	0.021	1.004(0.997-1.011)	0.9542	1.002(0.993-1.011)	0.8848	1.006(0.996-1.016)	0.9202
Average Air Temp. (°C)	0.971(0.966-0.975)	<0.0001	0.975(0.969-0.981)	<0.0001	0.962(0.955-0.968)	<0.0001						
Max. Air Temp. (°C)	0.972(0.968-0.977)	<0.0001	0.978(0.972-0.984)	<0.0001	0.962(0.956-0.969)	<0.0001						
Effective Air Temp. (°C)	0.989(0.983-0.994)	0.0007	0.991(0.985-0.998)	0.3186	0.983(0.976-0.99)	0.0001						

Lag 3 days

Min. Air Temp. (°C)	0.966(0.961-0.971)	<0.0001	0.968(0.962-0.974)	<0.0001	0.962(0.955-0.968)	<0.0001	0.971(0.966-0.977)	<0.0001	0.976(0.969-0.983)	<0.0001	0.962(0.955-0.97)	<0.0001
Precipitation (mm)	0.991(0.986-0.996)	0.0061	0.986(0.98-0.992)	0.0003	1.001(0.994-1.008)	0.8248	0.994(0.988-1)	0.6228	0.989(0.981-0.996)	0.0609	1.004(0.996-1.013)	0.9202
Air Humidity (%)	1(0.995-1.005)	0.8918	0.996(0.99-1.002)	0.9729	1.009(1.002-1.016)	0.1396	0.985(0.974-0.996)	0.1332	0.989(0.975-1.003)	0.8848	0.978(0.962-0.993)	0.1165
Air Pressure (kPa)	0.999(0.994-1.004)	0.8918	1.005(0.998-1.011)	0.9729	0.989(0.982-0.995)	0.0148	0.993(0.987-0.999)	0.4113	0.997(0.989-1.004)	0.8848	0.987(0.978-0.995)	0.0512
Wind (m/s)	1.008(1.003-1.013)	0.0207	1.006(1-1.012)	0.9729	1.012(1.006-1.019)	0.0065	1.004(0.998-1.01)	0.9542	1.007(0.999-1.015)	0.8848	0.998(0.989-1.007)	0.9202
Sunshine Duration (h)	0.983(0.979-0.988)	<0.0001	0.987(0.981-0.993)	0.0014	0.975(0.969-0.982)	<0.0001	0.974(0.962-0.987)	0.0016	0.969(0.953-0.985)	0.0048	0.984(0.966-1.002)	0.9202
Delta Air Temp. (°C)	0.997(0.992-1.002)	0.8918	1.004(0.998-1.01)	0.9729	0.983(0.976-0.99)	<0.0001	1.01(1-1.019)	0.6228	1.02(1.008-1.032)	0.0183	0.989(0.976-1.002)	0.9202
Snow (mm)*	1.002(0.997-1.007)	0.8918	1(0.993-1.006)	0.9729	1.007(1-1.014)	0.3341	0.999(0.992-1.006)	0.9542	0.999(0.99-1.008)	0.8848	0.999(0.989-1.009)	0.9202
Average Air Temp. (°C)	0.967(0.962-0.972)	<0.0001	0.971(0.965-0.977)	<0.0001	0.96(0.954-0.966)	<0.0001						
Max. Air Temp. (°C)	0.969(0.965-0.974)	<0.0001	0.974(0.968-0.98)	<0.0001	0.961(0.954-0.967)	<0.0001						
Effective Air Temp. (°C)	0.984(0.979-0.989)	<0.0001	0.986(0.979-0.993)	0.0024	0.98(0.973-0.987)	<0.0001						

Lag 5 days

Min. Air Temp. (°C)	0.967(0.962-0.972)	<0.0001	0.968(0.962-0.974)	<0.0001	0.965(0.959-0.971)	<0.0001	0.972(0.966-0.977)	<0.0001	0.975(0.967-0.982)	<0.0001	0.966(0.958-0.974)	<0.0001
Precipitation (mm)	0.992(0.987-0.997)	0.0318	0.989(0.983-0.995)	0.0127	0.999(0.992-1.006)	0.8248	0.995(0.99-1.001)	0.9542	0.992(0.984-0.999)	0.5319	1.002(0.994-1.011)	0.9202
Air Humidity (%)	1.001(0.996-1.006)	0.8918	0.996(0.99-1.002)	0.9729	1.01(1.004-1.017)	0.0328	0.985(0.975-0.996)	0.1406	0.985(0.971-0.999)	0.5319	0.987(0.971-1.002)	0.9202
Air Pressure (kPa)	0.999(0.994-1.004)	0.8918	1.002(0.996-1.009)	0.9729	0.993(0.986-0.999)	0.2087	0.995(0.989-1.001)	0.9542	0.997(0.989-1.005)	0.8848	0.991(0.983-1)	0.8323
Wind (m/s)	1.009(1.004-1.014)	0.0052	1.01(1.003-1.016)	0.0634	1.008(1.002-1.015)	0.145	1.005(0.999-1.011)	0.9542	1.008(1.001-1.016)	0.5319	0.998(0.989-1.007)	0.9202
Sunshine Duration (h)	0.983(0.979-0.988)	<0.0001	0.987(0.981-0.993)	0.0005	0.977(0.97-0.984)	<0.0001	0.982(0.969-0.995)	0.1159	0.975(0.959-0.991)	0.0517	0.996(0.978-1.015)	0.9202
Delta Air Temp. (°C)	0.994(0.989-0.999)	0.1514	1(0.994-1.006)	0.9729	0.981(0.975-0.988)	<0.0001	1(0.991-1.009)	0.9542	1.01(0.998-1.022)	0.8848	0.981(0.968-0.994)	0.1165
Snow (mm)*	1.004(0.999-1.01)	0.8918	1.003(0.996-1.01)	0.9729	1.008(1-1.015)	0.2355	1.006(0.998-1.013)	0.9542	1.003(0.994-1.012)	0.8848	1.011(1.001-1.021)	0.8268
Average Air Temp. (°C)	0.967(0.963-0.972)	<0.0001	0.97(0.964-0.976)	<0.0001	0.963(0.956-0.969)	<0.0001						
Max. Air Temp. (°C)	0.969(0.964-0.974)	<0.0001	0.972(0.966-0.979)	<0.0001	0.963(0.956-0.969)	<0.0001						
Effective Air Temp. (°C)	0.986(0.981-0.991)	<0.0001	0.987(0.98-0.994)	0.0079	0.983(0.976-0.99)	0.0001						

Lag 7 days

Min. Air Temp. (°C)	0.969(0.964-0.973)	<0.0001	0.97(0.964-0.976)	<0.0001	0.966(0.96-0.972)	<0.0001	0.979(0.973-0.984)	<0.0001	0.982(0.975-0.989)	<0.0001	0.972(0.964-0.98)	<0.0001
Precipitation (mm)	0.989(0.984-0.993)	0.0001	0.987(0.981-0.993)	0.0011	0.992(0.985-0.999)	0.1526	0.987(0.981-0.993)	0.0004	0.985(0.978-0.992)	0.0022	0.991(0.983-1)	0.8674
Air Humidity (%)	1.004(0.999-1.009)	0.8918	1.002(0.996-1.008)	0.9729	1.009(1.002-1.015)	0.1414	0.985(0.974-0.996)	0.1332	0.985(0.971-0.999)	0.5319	0.985(0.97-1.001)	0.9202
Air Pressure (kPa)	0.999(0.994-1.004)	0.8918	1.001(0.995-1.007)	0.9729	0.996(0.989-1.003)	0.8248	0.995(0.989-1.001)	0.9542	0.995(0.988-1.003)	0.8848	0.994(0.986-1.003)	0.9202
Wind (m/s)	1.01(1.005-1.015)	0.002	1.009(1.003-1.015)	0.0944	1.011(1.004-1.018)	0.0168	1.005(0.999-1.011)	0.9542	1.006(0.998-1.013)	0.8848	1.004(0.996-1.013)	0.9202
Sunshine Duration (h)	0.979(0.975-0.984)	<0.0001	0.98(0.974-0.986)	<0.0001	0.977(0.97-0.984)	<0.0001	0.967(0.954-0.979)	<0.0001	0.962(0.946-0.978)	0.0001	0.976(0.958-0.995)	0.3019
Delta Air Temp. (°C)	0.992(0.987-0.996)	0.0145	0.995(0.989-1.001)	0.9729	0.985(0.978-0.991)	0.0002	1.008(0.998-1.017)	0.9542	1.013(1.001-1.025)	0.5319	0.998(0.984-1.011)	0.9202
Snow (mm)*	1.008(1.003-1.014)	0.0315	1.006(0.999-1.013)	0.9729	1.013(1.006-1.02)	0.0051	1.008(1.001-1.015)	0.4113	1.006(0.997-1.015)	0.8848	1.012(1.002-1.022)	0.5295
Average Air Temp. (°C)	0.968(0.964-0.973)	<0.0001	0.971(0.965-0.977)	<0.0001	0.964(0.958-0.971)	<0.0001						
Max. Air Temp. (°C)	0.97(0.965-0.974)	<0.0001	0.972(0.966-0.978)	<0.0001	0.965(0.958-0.971)	<0.0001						
Effective Air Temp. (°C)	0.989(0.984-0.994)	0.0014	0.99(0.983-0.997)	0.0811	0.988(0.98-0.995)	0.0155						

Sensitivity Analyses

Min. Air Temp. (°C)							0.97 (0.966-0.975)	<0.0001	0.976 (0.969-0.982)	<0.0001	0.961 (0.953-0.968)	<0.0001
Precipitation (mm)							0.992 (0.987-0.998)	0.0039	0.995 (0.989-1.001)	0.1324	0.987 (0.979-0.995)	0.0023

Air Humidity (%)	1.004 (0.994-1.014)	0.4214	1.002 (0.99-1.015)	0.6917	1.007 (0.991-1.023)	0.3805
Air Pressure (kPa)	0.988 (0.983-0.993)	<0.0001	0.991 (0.984-0.997)	0.0045	0.984 (0.975-0.992)	0.0001
Wind (m/s)	1.011 (1.005-1.016)	0.0001	1.01 (1.003-1.016)	0.0057	1.013 (1.004-1.021)	0.0053
Sunshine Duration (h)	0.999 (0.988-1.011)	0.9134	0.997 (0.983-1.011)	0.6545	1.005 (0.986-1.024)	0.6217
Delta Air Temp. (°C)	1.009 (1.001-1.017)	0.0271	1.01 (1-1.02)	0.0552	1.007 (0.994-1.021)	0.263
*Adjusted for day of week and year						
Min. Air Temp. (°C)	1.007 (0.996-1.019)	0.9652	1.024 (1.009-1.040)	0.0196	0.975 (0.958-0.991)	0.0374
Precipitation (mm)	0.993 (0.987-0.999)	0.2045	0.995 (0.987-1.003)	0.8811	0.989 (0.980-0.998)	0.1254
Air Humidity (%)	1.000 (0.988-1.012)	0.9652	0.999 (0.984-1.014)	0.8811	1.002 (0.984-1.019)	0.8641
Air Pressure (kPa)	0.988 (0.982-0.994)	0.0009	0.992 (0.985-1.000)	0.3080	0.981 (0.972-0.989)	<0.0001
Wind (m/s)	1.005 (0.999-1.012)	0.8696	1.004 (0.996-1.013)	0.8811	1.006 (0.997-1.016)	0.8641
Sunshine Duration (h)	0.989 (0.977-1.002)	0.8696	0.982 (0.965-0.998)	0.2640	1.005 (0.987-1.025)	0.8641
Delta Air Temp. (°C)	1.021 (1.011-1.031)	0.0004	1.030 (1.017-1.043)	<0.0001	1.004 (0.989-1.018)	0.8641
* Adjusted for calendar week as categorical variable						
Min. Air Temp. (°C)	0.963 (0.952-0.974)	<0.0001	0.972 (0.958-0.985)	0.0007	0.944 (0.927-0.962)	<0.0001
Precipitation (mm)	1.000 (0.990-1.011)	0.9652	1.007 (0.994-1.019)	0.8811	0.987 (0.970-1.004)	0.8641
Air Humidity (%)	1.024 (1.004-1.044)	0.1993	1.041 (1.017-1.066)	0.0102	0.990 (0.959-1.022)	0.8641
Air Pressure (kPa)	0.993 (0.982-1.004)	0.9652	1.002 (0.989-1.016)	0.8811	0.975 (0.958-0.993)	0.0650
Wind (m/s)	1.020 (1.007-1.033)	0.2322	1.027 (1.011-1.043)	0.0100	1.006 (0.985-1.027)	0.8641
Sunshine Duration (h)	1.002 (0.981-1.024)	0.9652	1.004 (0.979-1.031)	0.8811	0.997 (0.963-1.032)	0.8641
Delta Air Temp. (°C)	1.004 (0.988-1.021)	0.9652	1.005 (0.985-1.025)	0.8811	1.003 (0.976-1.030)	0.8641
* Adjusted for air pollution(CO, NOx, NO2, PM10 and ozone)						

eTable 3. Results of primary and secondary analyses including seasonal and sensitivity analyses.

All P-values are adjusted for multiple testing using false discovery rate with the Benjamini-Hochberg method. The main analyses, regional seasonal, lagged, sensitivity and subgroups analyses were adjusted separately within strata (total MI, NSTEMI and STEMI).

CI= confidence interval; IRR=incidence rate ratio; NSTEMI= non ST-elevation myocardial infarction; STEMI= ST-elevation myocardial infarction.

Supplementary
Table 4.
Subgroup
Analyses.

Subgroup	Meteorological variable	Unadjusted	Adjusted P-value	Adjusted	Adjusted P-value
		Total MI		Total MI	
		IRR (95%CI)		IRR (95%CI)	
Men	Min. Air Temp. (°C)	0,97 (0,965-0,976)	<0,0001	0,972 (0,965-0,978)	<0,0001
	Precipitation (mm)	0,991 (0,985-0,997)	0,2431	0,99 (0,983-0,996)	0,4567
	Air Humidity (%)	0,998 (0,993-1,004)	0,9999	0,996 (0,984-1,009)	0,9934
	Air Pressure (kPa)	0,994 (0,988-0,999)	0,9999	0,988 (0,981-0,995)	0,1154
	Wind (m/s)	1,012 (1,006-1,018)	0,0056	1,011 (1,004-1,018)	0,4916
	Sunshine Duration (h)	0,989 (0,983-0,994)	0,0151	0,988 (0,973-1,003)	0,9934
	Delta Air Temp. (°C)	1 (0,995-1,006)	0,9999	1,013 (1,002-1,024)	0,9934
	Women	Min. Air Temp. (°C)	0,975 (0,968-0,982)	<0,0001	0,979 (0,971-0,987)
Precipitation (mm)		0,994 (0,987-1,001)	0,9999	0,989 (0,98-0,997)	0,9934
Air Humidity (%)		1,003 (0,996-1,01)	0,9999	1,003 (0,987-1,02)	0,9934
Air Pressure (kPa)		0,991 (0,984-0,998)	0,9999	0,986 (0,977-0,994)	0,1664
Wind (m/s)		1,013 (1,006-1,02)	0,0557	1,013 (1,004-1,022)	0,8501
Sunshine Duration (h)		0,985 (0,978-0,992)	0,0036	0,982 (0,964-1,001)	0,9934
Delta Air Temp. (°C)		0,998 (0,991-1,005)	0,9999	1,021 (1,007-1,034)	0,4389
Age≥75 years		Min. Air Temp. (°C)	0,971 (0,965-0,978)	<0,0001	0,972 (0,965-0,98)
	Precipitation (mm)	0,993 (0,987-1)	0,9999	0,992 (0,984-1)	0,9934
	Air Humidity (%)	0,999 (0,992-1,005)	0,9999	1 (0,985-1,014)	0,9934
	Air Pressure (kPa)	0,992 (0,985-0,998)	0,9999	0,987 (0,979-0,995)	0,1761
	Wind (m/s)	1,016 (1,009-1,022)	0,0005	1,015 (1,007-1,024)	0,0600
	Sunshine Duration (h)	0,988 (0,981-0,994)	0,0373	0,991 (0,973-1,008)	0,9934
	Delta Air Temp. (°C)	0,999 (0,993-1,006)	0,9999	1,015 (1,002-1,027)	0,9934
	Age<75 years	Min. Air Temp. (°C)	0,972 (0,967-0,978)	<0,0001	0,976 (0,969-0,983)
Precipitation (mm)		0,991 (0,985-0,997)	0,5466	0,987 (0,98-0,995)	0,1228
Air Humidity (%)		1,001 (0,995-1,007)	0,9999	0,998 (0,985-1,012)	0,9934
Air Pressure (kPa)		0,994 (0,988-1)	0,9999	0,988 (0,98-0,995)	0,1761
Wind (m/s)		1,009 (1,003-1,015)	0,4050	1,008 (1-1,016)	0,9934
Sunshine Duration (h)		0,987 (0,981-0,993)	0,0043	0,982 (0,966-0,998)	0,9934
Delta Air Temp. (°C)		0,999 (0,993-1,005)	0,9999	1,017 (1,005-1,029)	0,6407
Current Smoker		Min. Air Temp. (°C)	0,982 (0,973-0,99)	0,0086	0,984 (0,974-0,995)
	Precipitation (mm)	0,994 (0,985-1,003)	0,9999	0,995 (0,984-1,007)	0,9934
	Air Humidity (%)	0,995 (0,986-1,004)	0,9999	0,986 (0,966-1,006)	0,9934
	Air Pressure (kPa)	0,997 (0,989-1,006)	0,9999	0,992 (0,981-1,004)	0,9934
	Wind (m/s)	1,008 (0,999-1,017)	0,9999	1,006 (0,995-1,018)	0,9934
	Sunshine Duration (h)	0,993 (0,984-1,002)	0,9999	0,983 (0,959-1,007)	0,9934
	Delta Air Temp. (°C)	1,002 (0,993-1,011)	0,9999	1,007 (0,99-1,025)	0,9934
	Non Smoker	Min. Air Temp. (°C)	0,968 (0,963-0,973)	<0,0001	0,97 (0,964-0,976)
Precipitation (mm)		0,991 (0,985-0,996)	0,0925	0,987 (0,981-0,994)	0,0253
Air Humidity (%)		1,002 (0,997-1,008)	0,9999	1,004 (0,992-1,017)	0,9934
Air Pressure (kPa)		0,993 (0,988-0,998)	0,9999	0,988 (0,981-0,994)	0,0420
Wind (m/s)		1,014 (1,008-1,019)	0,0002	1,014 (1,007-1,021)	0,0194
Sunshine Duration (h)		0,985 (0,98-0,991)	<0,0001	0,99 (0,976-1,004)	0,9934
Delta Air Temp. (°C)		0,997 (0,992-1,002)	0,9999	1,015 (1,005-1,026)	0,4950
Diabetes		Min. Air Temp. (°C)	0,973 (0,964-0,981)	<0,0001	0,978 (0,967-0,988)

No Diabetes	Precipitation (mm)	0,996 (0,987-1,005)	0,9999	0,99 (0,98-1,002)	0,9934
	Air Humidity (%)	1,002 (0,993-1,011)	0,9999	0,998 (0,978-1,019)	0,9934
	Air Pressure (kPa)	0,992 (0,983-1,001)	0,9999	0,988 (0,977-0,999)	0,9934
	Wind (m/s)	1,014 (1,005-1,023)	0,3008	1,014 (1,003-1,026)	0,9934
	Sunshine Duration (h)	0,983 (0,974-0,992)	0,0347	0,974 (0,95-0,998)	0,9934
	Delta Air Temp. (°C)	1 (0,991-1,009)	0,9999	1,025 (1,007-1,042)	0,7637
	Min. Air Temp. (°C)	0,971 (0,966-0,977)	<0,0001	0,974 (0,968-0,98)	<0,0001
	Precipitation (mm)	0,991 (0,986-0,996)	0,1778	0,989 (0,982-0,995)	0,0985
Hypertension	Air Humidity (%)	1 (0,995-1,005)	0,9999	1 (0,988-1,011)	0,9934
	Air Pressure (kPa)	0,994 (0,988-0,999)	0,9999	0,987 (0,981-0,994)	0,0242
	Wind (m/s)	1,012 (1,007-1,017)	0,0018	1,011 (1,005-1,018)	0,1667
	Sunshine Duration (h)	0,988 (0,983-0,993)	0,0013	0,987 (0,973-1,001)	0,9934
	Delta Air Temp. (°C)	0,999 (0,994-1,005)	0,9999	1,015 (1,005-1,026)	0,3895
	Min. Air Temp. (°C)	0,968 (0,96-0,976)	<0,0001	0,98 (0,971-0,989)	0,0060
	Precipitation (mm)	0,993 (0,984-1,001)	0,9999	0,983 (0,973-0,992)	0,0896
	Air Humidity (%)	1,01 (1,002-1,019)	0,9999	1,009 (0,991-1,027)	0,9934
No Hypertension	Air Pressure (kPa)	0,995 (0,987-1,003)	0,9999	0,994 (0,984-1,004)	0,9934
	Wind (m/s)	1,015 (1,007-1,024)	0,0541	1,021 (1,01-1,031)	0,0149
	Sunshine Duration (h)	0,974 (0,966-0,981)	<0,0001	0,957 (0,936-0,977)	0,0084
	Delta Air Temp. (°C)	0,997 (0,988-1,005)	0,9999	1,041 (1,025-1,057)	<0,0001
	Min. Air Temp. (°C)	0,975 (0,969-0,98)	<0,0001	0,97 (0,963-0,977)	<0,0001
	Precipitation (mm)	0,992 (0,986-0,998)	0,9999	0,994 (0,987-1,002)	0,9934
	Air Humidity (%)	0,993 (0,987-0,999)	0,9999	0,992 (0,979-1,006)	0,9934
	Air Pressure (kPa)	0,992 (0,986-0,998)	0,9068	0,983 (0,976-0,99)	0,0012
Coronary Artery Disease	Wind (m/s)	1,01 (1,004-1,016)	0,1916	1,005 (0,997-1,013)	0,9934
	Sunshine Duration (h)	0,997 (0,991-1,003)	0,9999	1,008 (0,991-1,024)	0,9934
	Delta Air Temp. (°C)	1,001 (0,995-1,007)	0,9999	0,998 (0,987-1,01)	0,9934
	Min. Air Temp. (°C)	0,971 (0,964-0,978)	<0,0001	0,975 (0,966-0,983)	<0,0001
	Precipitation (mm)	0,993 (0,986-1)	0,9999	0,989 (0,98-0,997)	0,9934
	Air Humidity (%)	1,004 (0,997-1,011)	0,9999	1 (0,984-1,016)	0,9934
	Air Pressure (kPa)	0,992 (0,985-0,999)	0,9999	0,988 (0,979-0,997)	0,9072
	Wind (m/s)	1,015 (1,008-1,022)	0,0078	1,013 (1,004-1,023)	0,7489
No Coronary Artery Disease	Sunshine Duration (h)	0,982 (0,975-0,99)	0,0003	0,982 (0,963-1,001)	0,9934
	Delta Air Temp. (°C)	0,995 (0,988-1,002)	0,9999	1,016 (1,002-1,03)	0,9934
	Min. Air Temp. (°C)	0,973 (0,967-0,978)	<0,0001	0,975 (0,968-0,982)	<0,0001
	Precipitation (mm)	0,992 (0,987-0,998)	0,9999	0,989 (0,983-0,996)	0,4926
	Air Humidity (%)	0,999 (0,993-1,005)	0,9999	0,999 (0,986-1,012)	0,9934
	Air Pressure (kPa)	0,993 (0,988-0,999)	0,9999	0,988 (0,981-0,995)	0,0949
	Wind (m/s)	1,012 (1,006-1,017)	0,0156	1,012 (1,004-1,019)	0,2897
	Sunshine Duration (h)	0,989 (0,983-0,995)	0,0295	0,986 (0,971-1,002)	0,9934
Beta-blockers	Delta Air Temp. (°C)	1,001 (0,995-1,007)	0,9999	1,017 (1,006-1,028)	0,3109
	Min. Air Temp. (°C)	0,969 (0,963-0,976)	<0,0001	0,974 (0,966-0,982)	<0,0001
	Precipitation (mm)	0,995 (0,988-1,002)	0,9999	0,989 (0,981-0,998)	0,9934
	Air Humidity (%)	1,006 (0,999-1,013)	0,9999	1,007 (0,991-1,022)	0,9934
	Air Pressure (kPa)	0,993 (0,986-1)	0,9999	0,989 (0,981-0,998)	0,9934
	Wind (m/s)	1,014 (1,007-1,021)	0,0154	1,014 (1,005-1,023)	0,2510
	Sunshine Duration (h)	0,98 (0,973-0,987)	<0,0001	0,979 (0,961-0,997)	0,9934
	Delta Air Temp. (°C)	0,997 (0,99-1,004)	0,9999	1,023 (1,01-1,037)	0,0967
No Beta-blockers	Min. Air Temp. (°C)	0,974 (0,968-0,979)	<0,0001	0,975 (0,968-0,982)	<0,0001
	Precipitation (mm)	0,99 (0,985-0,996)	0,1743	0,989 (0,982-0,996)	0,3673

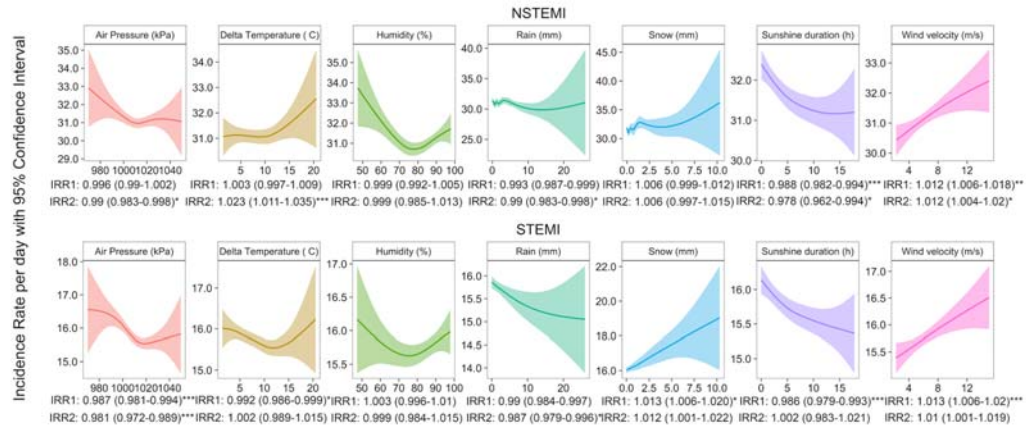
Ca-inhibitor	Air Humidity (%)	0,996 (0,991-1,002)	0,9999	0,994 (0,981-1,007)	0,9934
	Air Pressure (kPa)	0,993 (0,987-0,998)	0,9999	0,985 (0,978-0,992)	0,0118
	Wind (m/s)	1,012 (1,006-1,017)	0,0126	1,01 (1,002-1,018)	0,9934
	Sunshine Duration (h)	0,992 (0,986-0,998)	0,9999	0,99 (0,975-1,006)	0,9934
	Delta Air Temp. (°C)	1 (0,995-1,006)	0,9999	1,01 (0,999-1,022)	0,9934
	Min. Air Temp. (°C)	0,964 (0,955-0,973)	<0,0001	0,966 (0,955-0,978)	<0,0001
	Precipitation (mm)	0,998 (0,988-1,008)	0,9999	0,99 (0,978-1,002)	0,9934
	Air Humidity (%)	1,008 (0,998-1,017)	0,9999	1,009 (0,987-1,032)	0,9934
	Air Pressure (kPa)	0,985 (0,976-0,995)	0,4681	0,983 (0,971-0,995)	0,7141
	Wind (m/s)	1,023 (1,013-1,033)	0,0011	1,022 (1,009-1,035)	0,1629
No Ca-inhibitor	Sunshine Duration (h)	0,977 (0,967-0,987)	0,0010	0,986 (0,96-1,012)	0,9934
	Delta Air Temp. (°C)	0,992 (0,983-1,002)	0,9999	1,023 (1,004-1,042)	0,9934
	Min. Air Temp. (°C)	0,974 (0,969-0,979)	<0,0001	0,976 (0,97-0,983)	<0,0001
	Precipitation (mm)	0,991 (0,986-0,996)	0,1188	0,989 (0,982-0,995)	0,0806
	Air Humidity (%)	0,999 (0,994-1,004)	0,9999	0,997 (0,986-1,009)	0,9934
	Air Pressure (kPa)	0,994 (0,989-1)	0,9999	0,988 (0,982-0,994)	0,0371
	Wind (m/s)	1,011 (1,005-1,016)	0,0152	1,01 (1,003-1,017)	0,5663
	Sunshine Duration (h)	0,989 (0,984-0,994)	0,0066	0,985 (0,971-0,999)	0,9934
	Delta Air Temp. (°C)	1,001 (0,995-1,006)	0,9999	1,015 (1,005-1,025)	0,4357
	Min. Air Temp. (°C)	0,972 (0,965-0,978)	<0,0001	0,972 (0,964-0,98)	<0,0001
Aspirin	Precipitation (mm)	0,996 (0,989-1,002)	0,9999	0,993 (0,985-1,001)	0,9934
	Air Humidity (%)	1 (0,993-1,006)	0,9999	0,996 (0,981-1,011)	0,9934
	Air Pressure (kPa)	0,989 (0,982-0,995)	0,1322	0,984 (0,976-0,992)	0,0172
	Wind (m/s)	1,018 (1,011-1,024)	<0,0001	1,013 (1,004-1,022)	0,4698
	Sunshine Duration (h)	0,986 (0,98-0,993)	0,0093	0,991 (0,973-1,009)	0,9934
	Delta Air Temp. (°C)	0,996 (0,99-1,003)	0,9999	1,009 (0,996-1,022)	0,9934
	Min. Air Temp. (°C)	0,972 (0,967-0,978)	<0,0001	0,976 (0,969-0,983)	<0,0001
	Precipitation (mm)	0,99 (0,984-0,996)	0,1020	0,986 (0,979-0,994)	0,0475
	Air Humidity (%)	1,001 (0,995-1,007)	0,9999	1,002 (0,989-1,016)	0,9934
	Air Pressure (kPa)	0,996 (0,99-1,002)	0,9999	0,99 (0,983-0,997)	0,8288
No Aspirin	Wind (m/s)	1,009 (1,003-1,015)	0,5327	1,011 (1,004-1,019)	0,6208
	Sunshine Duration (h)	0,988 (0,982-0,994)	0,0080	0,982 (0,966-0,998)	0,9934
	Delta Air Temp. (°C)	1,001 (0,995-1,007)	0,9999	1,022 (1,01-1,033)	0,0428
	Min. Air Temp. (°C)	0,97 (0,96-0,98)	<0,0001	0,986 (0,974-0,998)	0,9934
	Precipitation (mm)	0,994 (0,984-1,005)	0,9999	0,981 (0,969-0,994)	0,5051
	Air Humidity (%)	1,01 (0,999-1,021)	0,9999	1,001 (0,978-1,024)	0,9934
	Air Pressure (kPa)	0,993 (0,983-1,004)	0,9999	0,991 (0,979-1,004)	0,9934
	Wind (m/s)	1,018 (1,007-1,029)	0,1887	1,021 (1,008-1,035)	0,3109
	Sunshine Duration (h)	0,97 (0,96-0,98)	<0,0001	0,933 (0,907-0,959)	0,0001
	Delta Air Temp. (°C)	0,999 (0,989-1,01)	0,9999	1,058 (1,037-1,079)	<0,0001
ACE-I/ARB	Min. Air Temp. (°C)	0,973 (0,968-0,978)	<0,0001	0,969 (0,963-0,976)	<0,0001
	Precipitation (mm)	0,991 (0,986-0,997)	0,2431	0,992 (0,986-0,999)	0,9934
	Air Humidity (%)	0,996 (0,991-1,001)	0,9999	0,999 (0,986-1,011)	0,9934
	Air Pressure (kPa)	0,993 (0,987-0,998)	0,9999	0,985 (0,978-0,992)	0,0038
	Wind (m/s)	1,01 (1,005-1,016)	0,0375	1,008 (1,001-1,015)	0,9934
	Sunshine Duration (h)	0,995 (0,99-1,001)	0,9999	1,011 (0,996-1,026)	0,9934
	Delta Air Temp. (°C)	0,999 (0,993-1,004)	0,9999	0,998 (0,987-1,008)	0,9934
	Min. Air Temp. (°C)	0,963 (0,951-0,974)	<0,0001	0,984 (0,971-0,998)	0,9934
	Precipitation (mm)	0,987 (0,974-0,999)	0,9999	0,977 (0,963-0,99)	0,1563
	Air Humidity (%)	1,006 (0,994-1,019)	0,9999	0,991 (0,965-1,016)	0,9934
Statins	Air Pressure (kPa)	1,004 (0,992-1,017)	0,9999	1,003 (0,989-1,017)	0,9934
	Wind (m/s)	1,019 (1,007-1,032)	0,3579	1,028 (1,013-1,043)	0,0385
	Sunshine Duration (h)	0,966 (0,955-0,977)	<0,0001	0,913 (0,886-0,942)	<0,0001
	Delta Air Temp. (°C)	1,002 (0,99-1,015)	0,9999	1,064 (1,041-1,088)	<0,0001

No Statins	Min. Air Temp. (°C)	0,976 (0,971-0,981)	<0,0001	0,971 (0,965-0,977)	<0,0001
	Precipitation (mm)	0,994 (0,989-1)	0,9999	0,994 (0,987-1)	0,9934
	Air Humidity (%)	0,998 (0,993-1,003)	0,9999	1,003 (0,991-1,015)	0,9934
	Air Pressure (kPa)	0,989 (0,984-0,994)	0,0029	0,981 (0,975-0,988)	<0,0001
	Wind (m/s)	1,01 (1,005-1,015)	0,0178	1,006 (0,999-1,013)	0,9934
	Sunshine Duration (h)	0,995 (0,99-1)	0,9999	1,014 (0,999-1,028)	0,9934
	Delta Air Temp. (°C)	0,998 (0,993-1,003)	0,9999	1 (0,99-1,01)	0,9934
	Diuretics	Min. Air Temp. (°C)	0,972 (0,964-0,979)	<0,0001	0,97 (0,96-0,979)
Precipitation (mm)		0,999 (0,992-1,007)	0,9999	1,004 (0,994-1,013)	0,9934
Air Humidity (%)		0,996 (0,988-1,004)	0,9999	0,99 (0,972-1,008)	0,9934
Air Pressure (kPa)		0,993 (0,985-1,001)	0,9999	0,986 (0,977-0,996)	0,7062
Wind (m/s)		1,01 (1,002-1,018)	0,9999	1,006 (0,996-1,016)	0,9934
Sunshine Duration (h)		0,991 (0,983-0,999)	0,9999	0,985 (0,964-1,006)	0,9934
Delta Air Temp. (°C)		1,005 (0,997-1,013)	0,9999	1,02 (1,004-1,035)	0,9934
No Diuretics		Min. Air Temp. (°C)	0,972 (0,967-0,978)	<0,0001	0,977 (0,97-0,983)
	Precipitation (mm)	0,989 (0,983-0,995)	0,0273	0,982 (0,976-0,989)	0,0001
	Air Humidity (%)	1,002 (0,997-1,008)	0,9999	1,004 (0,991-1,017)	0,9934
	Air Pressure (kPa)	0,993 (0,987-0,998)	0,9999	0,988 (0,981-0,995)	0,0827
	Wind (m/s)	1,014 (1,008-1,02)	0,0003	1,015 (1,007-1,022)	0,0184
	Sunshine Duration (h)	0,985 (0,979-0,991)	<0,0001	0,986 (0,971-1,001)	0,9934
	Delta Air Temp. (°C)	0,996 (0,991-1,002)	0,9999	1,015 (1,004-1,026)	0,9934

eTable 4. Results of subgroup analyses.

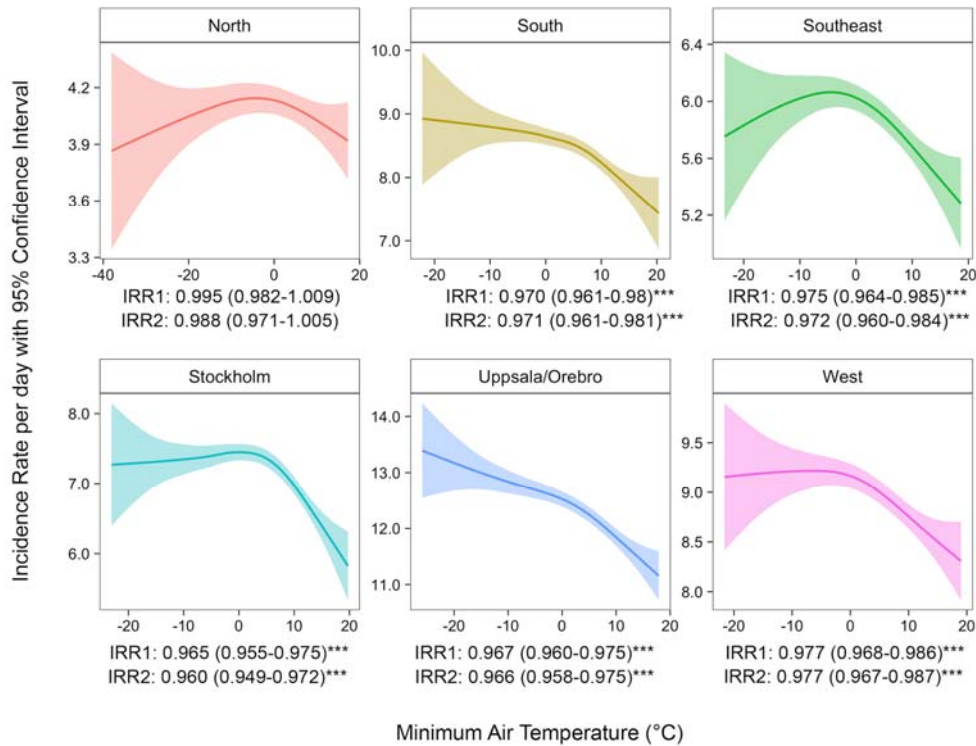
All P-values are adjusted for multiple testing using false discovery rate with the Benjamini-Hochberg method.

CI= confidence interval; IRR=incidence rate ratio; NSTEMI= non ST-elevation myocardial infarction; STEMI= ST-elevation myocardial infarction.



eFigure 1. Nationwide Daily Incidence Rate of Myocardial Infarction by Air Pressure, δ Temperature, Humidity, Precipitation, Sunshine Duration, and Wind Velocity for STEMI and NSTEMI

Minimum Air Temperature and Total MI by Region



eFigure 2.. Incidence of myocardial infarction by air temperature and region.

Smoothed conditional mean plots visualizing the variation of incidence rates of myocardial infarction at different temperatures stratified by healthcare region.

Unadjusted and adjusted incidence rate ratio (IRR) and 95% CI from regression analyses is presented below each graph. Results from the regression analyses are interpreted as change per increase in standard deviation. One standard deviation of air temperature in South=6.7°C; Southeast=7.1°C; West=7.1°C; Stockholm=7.3°C; Uppsala/Orebro=7.9°C and North=9.6°C.

IRR1= Univariable model.

IRR2= Multivariable model.

*p<0.05

**p<0.01

***p<0.001

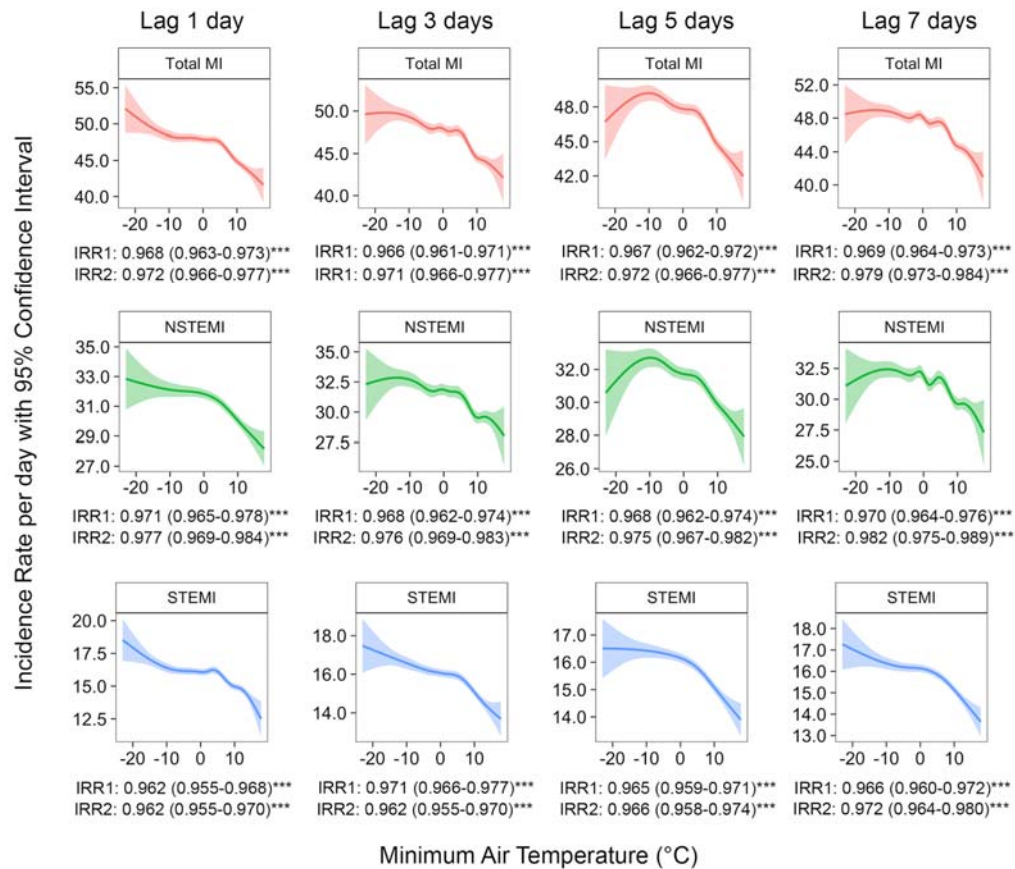


Figure 3. Nationwide daily incidence rate of myocardial infarction by temperature with lag effect.

Smoothed conditional mean plots visualizing the variation of incidence rates of myocardial infarction with a lag effect of 1, 3, 5 and 7 days. Unadjusted and adjusted incidence rate ratio (IRR) and 95% CI from regression analyses are presented below each graph. Results from the regression analyses are interpreted as change per increase in standard deviation (7.4°C). Lag analyses of remaining weather parameters are shown in supplementary figure 3 and supplementary table 3.

IRR1= Univariable model.

IRR2= Multivariable model.

*p<0.05

**p<0.01

***p<0.001

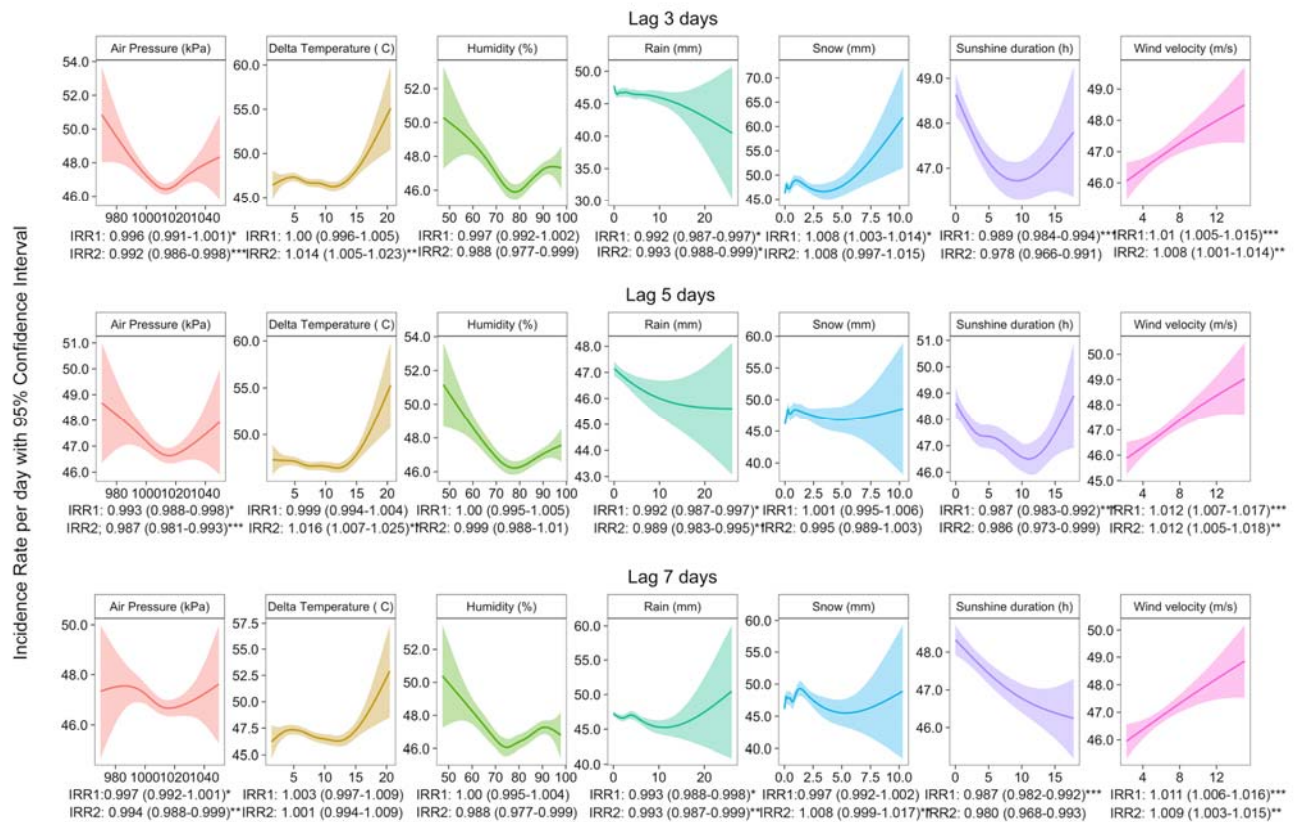


Figure 4. Lag of 1, 3, 5 and 7 days.

Smoothed conditional mean plots visualizing the incidence rate and 95% confidence interval for myocardial infarctions and weather parameters with lag effect of 1, 3, 5 and 7 days with incidence rate ratio (IRR) and 95%CI from regression analyses below each graph. Results from the regression analyses are interpreted as change for one increase in standard deviation. One standard deviation for air pressure=10.9kPa; Delta temperature=3.4°C; Humidity=9.6%; Rain=2.6mm; Snow=0.25mm; Sunshine duration=4.2h; Wind velocity=1.9m/s.

IRR1= Univariable model.

IRR2= Multivariable model.

*=p<0.05

**=p<0.01

***=p<0.001