

Supplementary Online Content

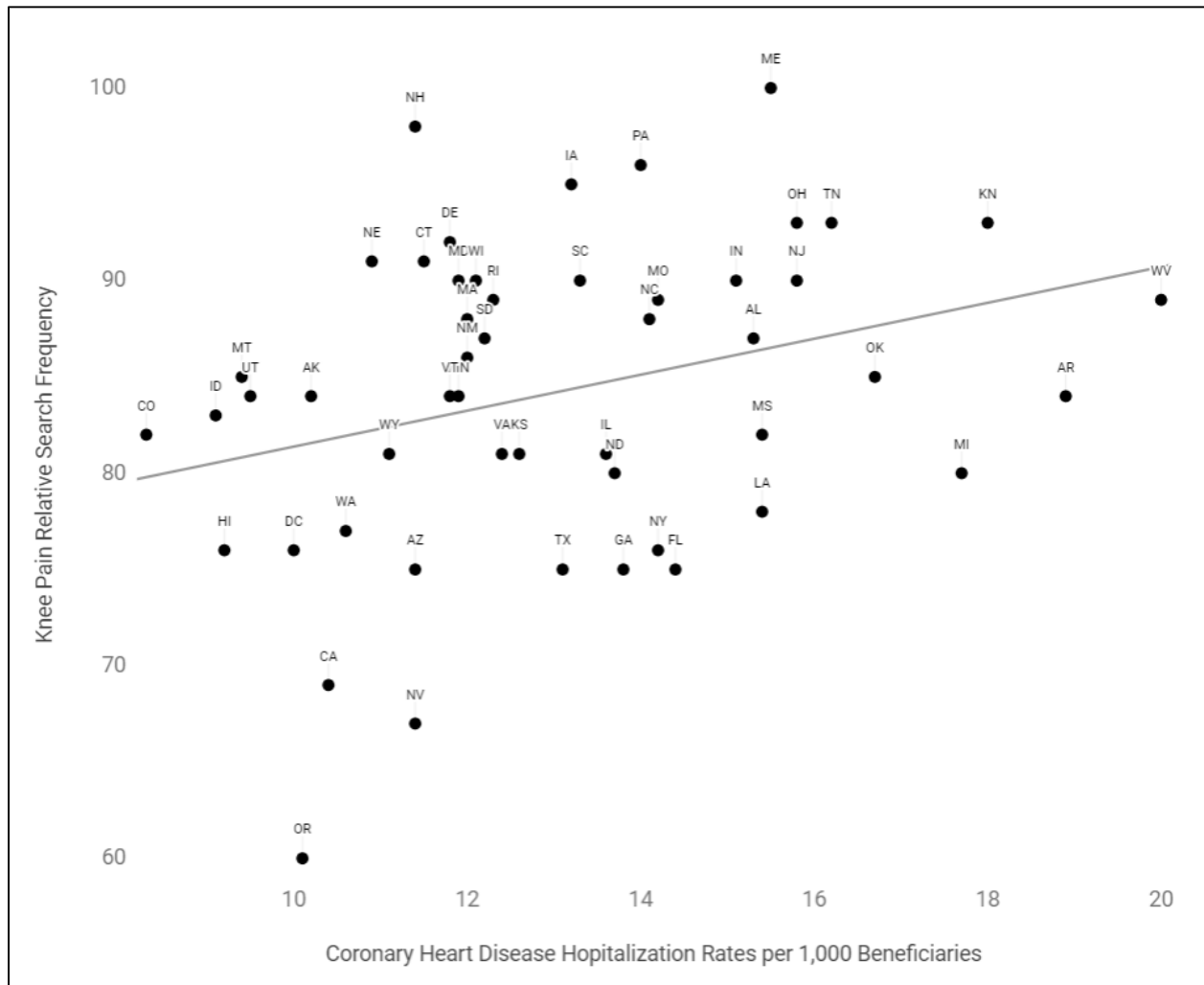
Senecal C, Widmer RJ, Lerman LO, Lerman A. Association of search engine queries for chest pain with coronary heart disease epidemiology. *JAMA Cardiol*. Published online October 24, 2018. doi:10.1001/jamacardio.2018.3459

eFigure 1. Relative search frequency for knee pain and coronary heart disease prevalence in the United States

eFigure 2. Diurnal search frequency variation

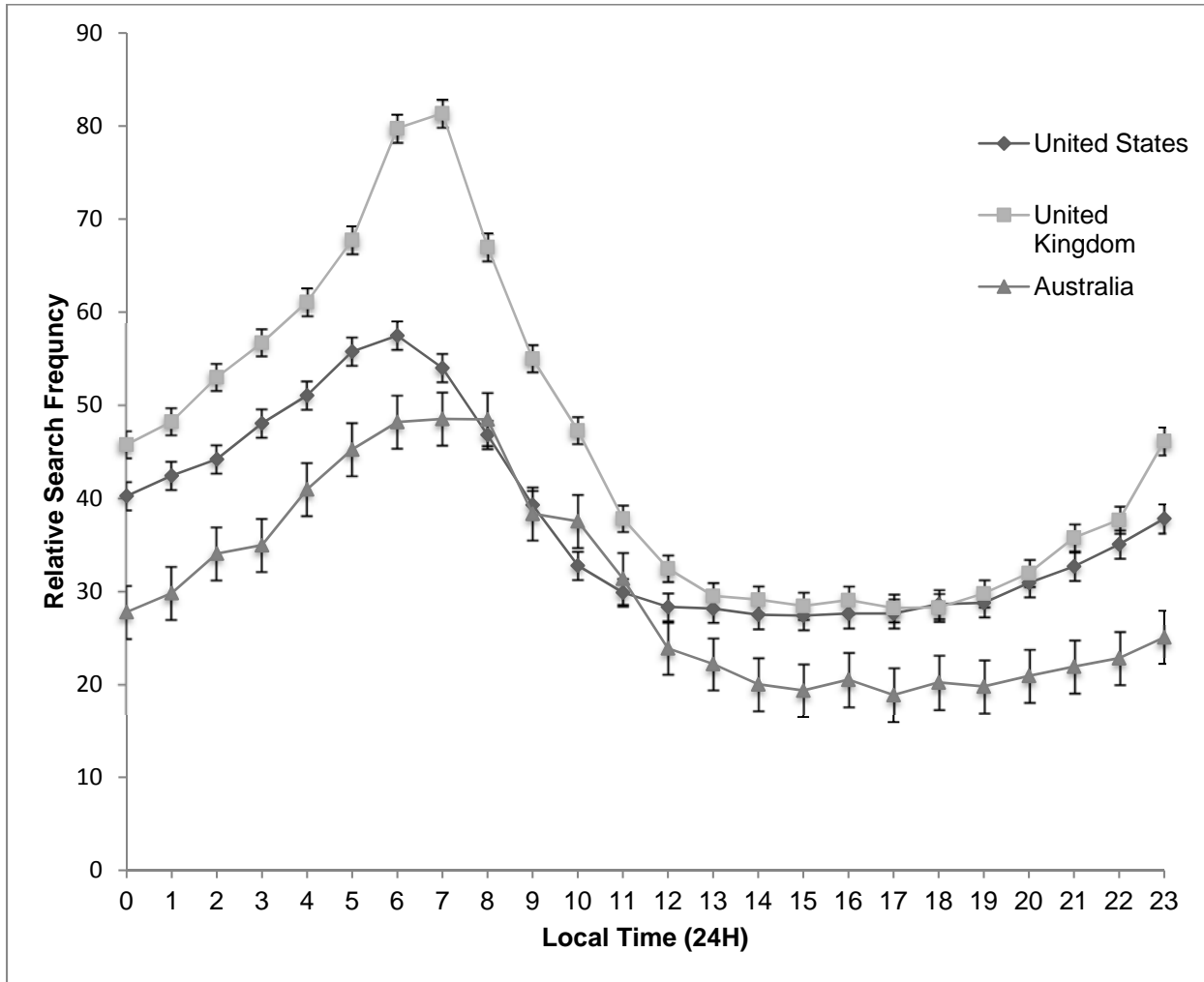
This supplementary material has been provided by the authors to give readers additional information about their work.

eFigure 1. Relative search frequency for knee pain and coronary heart disease prevalence in the United States



The scatter chart shows the relative search frequency for each state plotted with the CHD hospitalization rate reported by the CDC for each state from 2012-2014.

eFigure 2. Diurnal search frequency variation



Calculated means of hourly relative search frequency for 28 days for the United States, United Kingdom, and Australia. Error bars represent SEM. All countries studied had a significant hourly variation ($P < 0.0001$).