

## Supplementary Online Content

Arnold SV, Li Z, Vemulapalli S, et al. Association of transcatheter mitral valve repair with quality of life outcomes at 30 days and 1 year: analysis of the Transcatheter Valve Therapy Registry. *JAMA Cardiol*. Published online November 21, 2018. doi:10.1001/jamacardio.2018.3359

**eTable.** Baseline characteristics of CMS linked patients surviving 1 year<sup>1</sup>, according to presence of 1-year KCCQ data

**eFigure 1.** Categorical outcomes at 30 days and 1 year after TMVR.

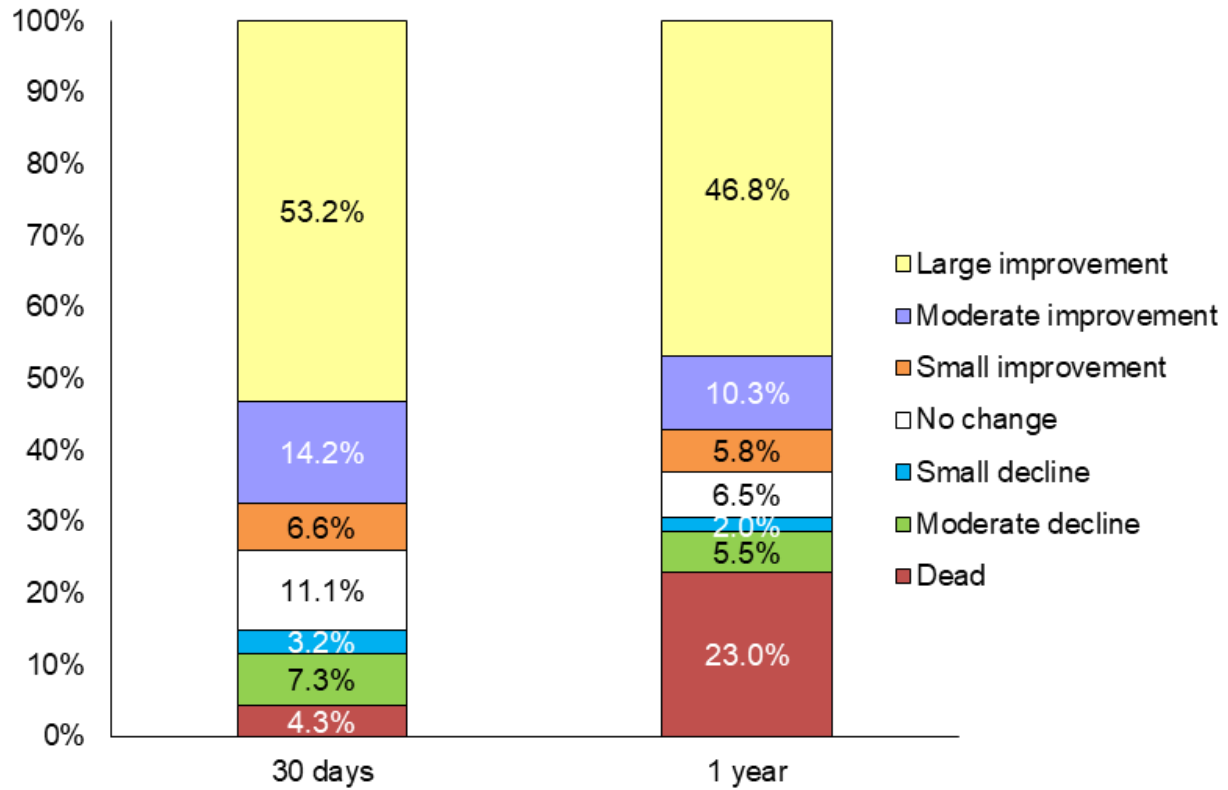
**eFigure 2.** Mean KCCQ-OS scores over time among 917 patients with complete data.

This supplementary material has been provided by the authors to give readers additional information about their work.

<b>eTable. Baseline characteristics of CMS linked patients surviving 1 year<sup>1</sup>, according to presence of 1-year KCCQ data</b>			
	<b>Patients with KCCQ n=942</b>	<b>Missing KCCQ Data n=1046</b>	<b>P-value</b>
Age (y)	83 (77-86)	82 (76-87)	0.583
Female	445 (47.2%)	481 (46.0%)	0.575
Caucasian race	878 (93.2%)	965 (92.3%)	0.416
Body surface area (m <sup>2</sup> )	1.8 (1.6-2.0)	1.8 (1.6-2.0)	0.933
Prior myocardial infarction	235 (25.1%)	268 (25.6%)	0.762
Prior percutaneous coronary intervention	296 (31.5%)	305 (29.3%)	0.283
Prior coronary artery bypass surgery	285 (30.4%)	342 (33.0%)	0.216
Peripheral artery disease	162 (17.2%)	201 (19.2%)	0.245
Atrial fibrillation/flutter	588 (62.4%)	687 (65.8%)	0.116
Permanent pacemaker	180 (19.1%)	207 (19.8%)	0.702
Ejection fraction (%)	55.0 (45.0-63.0)	55.0 (45.0-63.0)	0.790
Prior stroke	103 (10.9%)	100 (9.6%)	0.309
Diabetes mellitus	218 (23.1%)	260 (25.0%)	0.347
Treated with insulin	54 (24.8%)	85 (32.8%)	0.054
Severe lung disease	86 (9.2%)	110 (10.6%)	0.285
Home oxygen	135 (14.3%)	134 (12.8%)	0.327
Current smoker	34 (3.6%)	50 (4.8%)	0.192
Hemoglobin (g/dL)	12.3 (11.1-13.4)	12.2 (10.9-13.4)	0.233
Glomerular filtration rate (mL/min/1.73 m <sup>2</sup> )	55.7 (41.8-71.5)	56.0 (42.5-71.3)	0.980
Current dialysis	15 (1.6%)	19 (1.8%)	0.700
STS mortality risk score (%)	5.7 (3.8-8.8)	6.2 (3.9-9.5)	0.028
Mitral valve mean gradient (mmHg)	2.0 (2.0-4.0)	3.0 (2.0-4.0)	0.080
Moderate/severe aortic insufficiency	74 (7.9%)	93 (9.0%)	0.396
Functional mitral regurgitation	133 (14.1%)	131 (12.5%)	0.296
Degenerative mitral regurgitation	853 (90.6%)	924 (88.3%)	0.109
Acuity of procedure			0.007
Elective	873 (92.8%)	932 (89.3%)	
Urgent	35 (3.7%)	60 (5.7%)	
Shock/Inotropes/Assist Device	28 (3.0%)	51 (4.9%)	
Emergency/Salvage/Cardiac Arrest	5 (0.5%)	1 (0.1%)	
Baseline KCCQ-OS	41.7 (24.0-59.4)	39.6 (22.4-57.3)	0.087
6-minute walk test (m)	213.4 (122.8-300.5)	198.1 (109.7-280.1)	0.016
KCCQ-OS, Kansas City Cardiomyopathy Questionnaire-overall summary score; STS, Society for Thoracic Surgeons			
Data are expressed as n (%) or median (interquartile range)			
<sup>1</sup> 3269 patients eligible for 1 year follow-up → 3023 patients ≥65 years of age → 2583 patients linked to CMS (required to know survival status)			



**eFigure 1. Categorical outcomes at 30 days and 1 year after TMVR.** Changes in the KCCQ-OS of 5, 10, and 20 points correspond to small, moderate or large clinical improvements, respectively.



**eFigure 2. Mean KCCQ-OS scores over time among 917 patients with complete data**

