

Supplementary Online Content

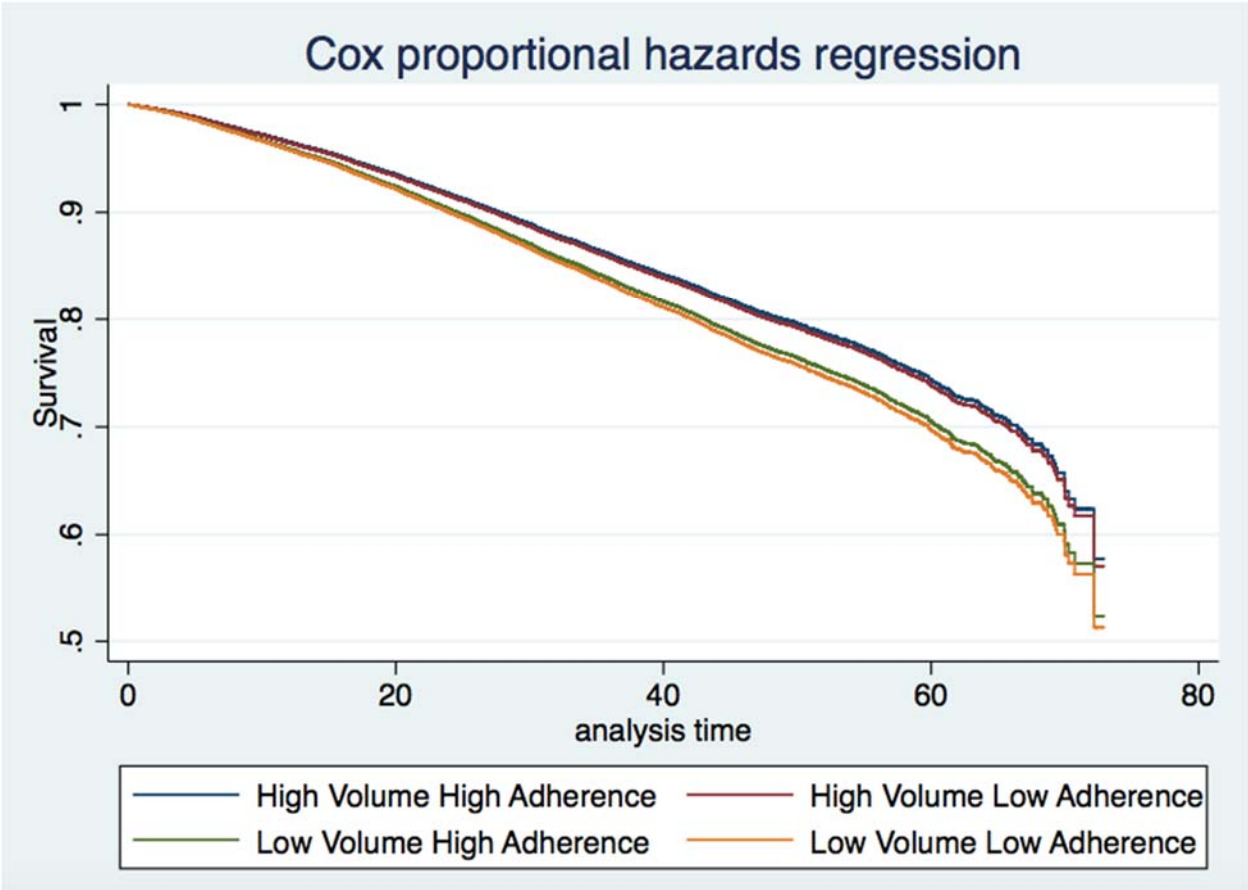
Antunez AG, Kanters AE, Regenbogen SE. Evaluation of access to hospitals most ready to achieve national accreditation for rectal cancer treatment. *JAMA Surg*. Published online February 20, 2019. doi:10.1001/jamasurg.2018.5521

eFigure. Adjusted Survival Curves by Hospital Group

eTable. Cox Proportional Hazards Model Results for Each Term in the Model

This supplementary material has been provided by the authors to give readers additional information about their work.

eFigure: Adjusted survival curves by hospital group



eTable: Cox proportional hazards model results for each term in the model

<i>Cox Regression Survival Model Covariate</i>		<i>HR</i>	<i>SE</i>	<i>Z</i>	<i>P> z </i>	<i>95% CI</i>	
<i>Hospital Group</i>							
2		1.0221 1	0.0794 405	0.2 8	0.7 78	0.8776 883	1.1902 95
3		1.1796 87	0.0781 085	2.5	0.0 13	1.0361 15	1.3431 54
4		1.2167 49	0.0814 769	2.9 3	0.0 03	1.0670 93	1.3873 94
<i>Stage of Rectal Cancer</i>							
2		1.2080 19	0.0493 657	4.6 2	0	1.1150 37	1.3087 54
3		1.3206	0.0556 249	6.6	0	1.2159 56	1.4342 49
4		4.7396 56	0.2274 23	32. 43	0	4.3142 33	5.2070 29
<i>AGE</i>							
		1.0386 11	0.0012 989	30. 29	0	1.0360 69	1.0411 6
<i>Charlson-Dayo Score</i>							
1		1.2263 56	0.0381 717	6.5 6	0	1.1537 78	1.3035 01
2		1.5695 94	0.0917 557	7.7 1	0	1.3996 76	1.7601 39
3		1.9002 53	0.1791 399	6.8 1	0	1.5796 73	2.2858 91
<i>RACE</i>							
	<i>Black</i>	1.2763 87	0.0591 64	5.2 6	0	1.1655 39	1.3977 77
	<i>American Indian, Aleutian, or Eskimo</i>	1.1222 32	0.2319 632	0.5 6	0.5 77	0.7484 124	1.6827 69
	<i>Chinese</i>	0.7103 191	0.1416 311	- 1.7 2	0.0 86	0.4805 425	1.0499 66
	<i>Japanese</i>	1.2298 59	0.2434 807	1.0 5	0.2 96	0.8343 325	1.8128 9
	<i>Filipino</i>	0.7358 693	0.1439 319	- 1.5 7	0.1 17	0.5015 457	1.0796 7
	<i>Hawaiian</i>	0.6957 263	0.2367 335	- 1.0 7	0.2 86	0.3571 097	1.3554 24
	<i>Korean</i>	0.7482 563	0.1759 517	- 1.2 3	0.2 17	0.4719 448	1.1863 41

	<i>Vietnamese</i>	0.7952 385	0.2245 535	- 0.8 1	0.4 17	0.4572 371	1.3830 99
	<i>Laotian</i>	0.6918 036	0.6673 058	- 0.3 8	0.7 02	0.1044 536	4.5818 62
	<i>Hmong</i>	4.0061 43	1.8095 35	3.0 7	0.0 02	1.6529 03	9.7096 98
	<i>Kampuchean</i>	1.9984 08	1.3560 87	1.0 2	0.3 08	0.5285 335	7.5560 64
	<i>Thai</i>	0.8686 354	0.6048 48	- 0.2	0.8 4	0.2218 856	3.4005 25
	<i>Asian Indian or Pakistani</i>	0.5266 983	0.1744 298	- 1.9 4	0.0 53	0.2752 102	1.0079 97
	<i>Asian Indian</i>	0.7005 624	0.2393 255	- 1.0 4	0.2 98	0.3586 412	1.3684 65
	<i>Pakistani</i>	0.4906 036	0.5313 954	- 0.6 6	0.5 11	0.0587 158	4.0992 7
	<i>Micronesian, NOS</i>	2.8705 7	0.1948 546	15. 53	0	2.5129 77	3.2790 48
	<i>Guamanian, NOS</i>	2.3492 32	1.1629 38	1.7 3	0.0 84	0.8903 411	6.1986 24
	<i>Samoan</i>	0.7198 441	0.4222 721	- 0.5 6	0.5 75	0.2279 869	2.2728 3
	<i>Tongan</i>	2.5998 76	1.7875 53	1.3 9	0.1 65	0.6756 256	10.004 59
	<i>Fiji Islander</i>	2.8782 47	1.2442 13	2.4 5	0.0 14	1.2335 86	6.7156 3
	<i>New Guinean</i>	8.68E- 19
	<i>Asian, NOS</i>	0.7030 493	0.1245 66	- 1.9 9	0.0 47	0.4967 869	0.9949 503
	<i>Pacific Islander, NOS</i>	0.8485 182	0.5142 174	- 0.2 7	0.7 86	0.2587 126	2.7829 46
	<i>Other</i>	0.7288 172	0.1327 07	- 1.7 4	0.0 82	0.5100 67	1.0413 82
	<i>Unknown</i>	1.1262 06	0.1881 138	0.7 1	0.4 77	0.8117 808	1.5624 16
SEX		0.8186 914	0.0220 63	- 7.4 2	0	0.7765 709	0.8630 964