

Supplementary Online Content

Wang TY, Kaltenbach LA, Cannon CP, et al. Effect of medication co-payment vouchers on P2Y₁₂ inhibitor use and major adverse cardiovascular events among patients with myocardial infarction: the ARTEMIS randomized clinical trial. *JAMA*. doi:10.1001/jama.2018.19791

eTable 1. Hospital Characteristics

eTable 2. List of Adjustment Variables for Primary Persistence and MACE Models

eTable 3. List of Variables Included in the Propensity Score Model

eTable 4. Baseline Patient Characteristics Among Patients Discharged Alive on Ticagrelor or Clopidogrel

eTable 5. Persistence and Clinical Outcomes Among the Primary Analysis Population Using 3 Modeling Methods

eTable 6. Persistence and Clinical Outcomes Among All Enrolled Patients, Including Patients Discharged on Prasugrel

eTable 7. Characteristics of Patients Who Did and Did Not Use the Study Voucher

eTable 8. Post Hoc As-Treated Analyses of Medication Persistence, MACE, and Major Bleeding

eFigure. Cumulative Incidence Curves for Major Adverse Cardiovascular Events Among Intervention Group Patients With and Without Voucher Use and Usual Care Group Patients

eAppendix. List of Enrolling Sites and Corresponding Principal Investigators (in Order of Number Enrolled)

This supplementary material has been provided by the authors to give readers additional information about their work.

eTable 1. Hospital Characteristics

	Intervention (n=135)	Usual Care (n=166)	P-value
Bed size	369 (268, 516)	397 (262, 620)	0.30
Teaching hospital	22.2%	26.5%	0.36
Geographic region			0.76
Northeast	20.6%	17.3%	
Midwest	29.8%	27.5%	
South	39.7%	42.3%	
West	9.9%	12.8%	
Ticagrelor use before ARTEMIS			0.63
Low (<15%)	43.7%	41.0%	
High (≥15%)	56.3%	59.0%	
Annual MI volume			0.70
Low (<400/year)	43.0%	45.2%	
High (≥400/year)	57.0%	54.8%	

MI, myocardial infarction.

eTable 2. List of Adjustment Variables for Primary Persistence and MACE Models

Intervention
Randomization scheme (2:1 vs. 1:1 scheme)
Interaction between intervention and randomization scheme*
Site MI volume
Site % ticagrelor use
Age
Male sex
Race
Insurance payors (private vs. non-private)
Region (Northeast, West, South, vs. Midwest)
Propensity for intervention

*Included if the interaction term is significant ($p < 0.05$)

MACE, major adverse cardiovascular events; MI, myocardial infarction.

eTable 3. List of Variables Included in the Propensity Score Model

Variable	Variable Type
Randomization scheme	Categorical (2:1 vs. 1:1 scheme)
Age	Continuous
Age ≥ 65 vs. < 65 years	Yes/no
Male sex	Yes/no
Race	Categorical (white vs. nonwhite)
Ethnicity	Categorical (Hispanic vs. non-Hispanic)
Insurance payors	Categorical (private vs. non-private)
Prior MI	Yes/no
Prior PCI	Yes/no
Prior CABG	Yes/no
Prior stroke/TIA	Yes/no
Prior heart failure	Yes/no
Dialysis	Yes/no
PAD	Yes/no
Hypertension	Yes/no
Diabetes	Yes/no
Current/recent smoker	Yes/no
Weight	Continuous
Transfer in	Yes/no
STEMI	Yes/no
Home P2Y ₁₂ inhibitor	Yes/no
Home aspirin	Yes/no
Creatinine clearance	Continuous
Nadir hemoglobin	Continuous
Multivessel disease	Yes/no
Access site	Categorical (femoral vs. other)
PCI performed	Categorical (multivessel vs. culprit vs. none)
CABG performed	Yes/no
Drug-eluting stent implanted	Yes/no
In-hospital or prior bleeding	Yes/no
In-hospital MI	Yes/no
In-hospital stroke	Yes/no
Cardiogenic shock (Killip IV on presentation or in-hospital cardiogenic shock)	Yes/no
Heart failure (Killip II/III on presentation or in-hospital heart failure)	Yes/no
Cardiac arrest	Yes/no
Cardiac rehab referral	Yes/no
Health literacy	Yes/no (score ≥ 10 vs. < 10)
Baseline angina frequency	Categorical (100 vs. 70-90 vs. 0-60 points)
Baseline PHQ 2>3	Categorical
Baseline EQ-5D VAS	Continuous
Married	Yes/no
Employed	Yes/no
Education (college graduate)	Yes/no
Baseline financial hardship *	Categorical (1 vs. 2/3 vs. 4/5)

eTable 3 (Continued)

Variable	Variable Type
Missed >1 dose of medication in the last month	Yes/no
Site: Total bed size	Continuous
Site: Teaching status	Yes/no
Site: Government hospital	Yes/no
Site: Member of a health care network	Yes/no
Site: Surgery capabilities	Yes/no

CABG, coronary artery bypass graft; EQ-5D VAS, EuroQol-visual analogue scales; MI, myocardial infarction; PAD, peripheral artery disease; PCI, percutaneous coronary intervention; PHQ, Patient Health Questionnaire; STEMI, ST-segment elevation myocardial infarction; TIA, transient ischemic attack.

* Baseline financial hardship was asked of all enrolled subjects during the index hospitalization: “On a scale of 1 to 5, how would you rate the financial hardship of your current monthly medication costs?” with 1= no hardship at all, and 5=extreme hardship

eTable 4. Baseline Patient Characteristics Among Patients Discharged Alive on Ticagrelor or Clopidogrel

	Intervention (n=6135)	Usual Care (n=3967)
Demographics		
Age, years	62 (54, 70)	62 (54, 70)
Male	4193 (68.4%)	2682 (67.6%)
Race		
White	5495 (89.6%)	3416 (86.1%)
African American	544 (8.9%)	461 (11.6%)
Asian	111 (1.8%)	89 (2.2%)
American Indian or Alaskan Native	59 (1.0%)	58 (1.5%)
Native Hawaiian or Pacific Islander	33 (0.5%)	18 (0.5%)
Private insurance	3864 (63.0%)	2540 (64.0%)
College or higher education	2906 (47.4%)	2024 (51.0%)
Employed	2866 (46.7%)	1763 (44.4%)
Household income		
\$10,000 or less	424 (6.9%)	245 (6.2%)
\$10,001 to \$20,000	624 (10.2%)	350 (8.8%)
\$20,001 to \$30,000	644 (10.5%)	397 (10.0%)
\$30,001 to \$50,000	878 (14.3%)	575 (14.5%)
\$50,001 to \$70,000	682 (11.1%)	417 (10.5%)
\$70,001 to \$100,000	594 (9.7%)	373 (9.4%)
\$100,001 to \$150,000	384 (6.3%)	279 (7.0%)
\$150,001 or greater	240 (3.9%)	173 (4.4%)
I prefer not to answer	1665 (27.1%)	1158 (29.2%)
Medical History		
Prior MI	1201 (19.6%)	859 (21.7%)
Prior CABG	654 (10.7%)	474 (12.0%)
Prior stroke/TIA	381 (6.2%)	299 (7.5%)
Peripheral arterial disease	353 (5.8%)	281 (7.1%)
Diabetes	1936 (31.6%)	1349 (34.0%)
Hypertension	4141 (67.5%)	2837 (71.5%)
Current/Recent smoker	2068 (33.7%)	1305 (32.9%)
Admission Characteristics		
STEMI	2845 (46.4%)	1793 (45.2%)
Weight, kg	89 (77, 103)	89 (76, 104)
Home aspirin use	2604 (42.4%)	1768 (44.6%)
Home P2Y ₁₂ inhibitor use	794 (12.9%)	654 (16.5%)
Clopidogrel	663 (10.8%)	577 (14.5%)
Ticagrelor	99 (1.6%)	68 (1.7%)
Prasugrel	32 (0.5%)	8 (1.7%)
Creatinine clearance, mL/min	71 (53, 90)	69 (52, 87)
Hemoglobin, g/dL	13.1 (11.7, 14.3)	13.0 (11.5, 14.2)
Multivessel disease	2894 (47.2%)	1793 (45.2%)
Coronary Treatment		
PCI	5530 (90.1%)	3473 (87.6%)
CABG	94 (1.5%)	60 (1.5%)

Continuous variables expressed as median (25th, 75th percentiles). Categorical variables expressed as n (%).

eTable 5. Persistence and Clinical Outcomes Among the Primary Analysis Population Using 3 Modeling Methods

	Primary		Secondary			
	Robust Standard Errors		Random Intercepts for Hospital		Propensity Matched Models	
	HR (95% CI)	P-value	HR (95% CI)	P-value	HR (95% CI)	P-value
Persistence						
ITT	1.19 (1.02-1.40)	0.03	1.21 (1.03, 1.41)	0.02	1.24 (1.09-1.42)	0.001
As-treated	1.53 (1.29-1.82)	<0.0001	1.53 (1.29, 1.82)	<0.0001	1.54 (1.32-1.80)	<0.0001
MACE						
ITT	1.07 (0.93-1.25)	0.35	1.06 (0.90-1.25)	0.49	1.11 (0.95-1.29)	0.18
As-treated	0.90 (0.76-1.08)	0.25	0.88 (0.74-1.06)	0.17	0.88 (0.73-1.05)	0.16
Death						
ITT	1.11 (0.88-1.39)	0.39	1.10 (0.86-1.39)	0.45	1.09 (0.85-1.40)	0.49
As-treated	0.82 (0.63-1.07)	0.14	0.81 (0.61-1.07)	0.14	0.76 (0.55-1.04)	0.08
Recurrent MI						
ITT	1.08 (0.90-1.29)	0.40	1.06 (0.87-1.29)	0.56	1.16 (0.97-1.40)	0.11
As-treated	0.98 (0.80-1.20)	0.83	0.96 (0.77-1.19)	0.69	0.97 (0.78-1.20)	0.78
Stroke						
ITT	0.98(0.68-1.42)	0.91	0.98 (0.62-1.54)	0.93	0.78 (0.44-1.38)	0.39
As-treated	0.86 (0.57-1.31)	0.48	0.86 (0.51-1.45)	0.57	0.90 (0.47-1.72)	0.74
CV death						
ITT	1.18 (0.92-1.52)	0.19	1.18 (0.91-1.53)	0.22	1.16 (0.87-1.53)	0.32
As-treated	0.89 (0.66-1.21)	0.46	0.89 (0.64-1.22)	0.46	0.83 (0.59-1.17)	0.29
BARC 2+ bleeding						
ITT	1.15 (0.94-1.41)	0.17	1.14 (0.93-1.41)	0.22	1.23 (0.98-1.54)	0.07
As-treated	1.13 (0.91- 1.40)	0.26	1.13 (0.90-1.41)	0.29	0.96 (0.74-1.24)	0.75

CI, confidence interval; ITT, intention to treat; MACE, major adverse cardiovascular events; MI, myocardial infarction; HR, hazards ratio. Hazard ratios are presented for all rows except for persistence for which odds ratios are presented.

eTable 6. Persistence and Clinical Outcomes Among All Enrolled Patients, Including Patients Discharged on Prasugrel

	Unadjusted				Adjusted	
	Intervention	Usual Care	HR (95% CI)	P-value	HR (95% CI)	P-value
Persistence						
Patient report	5580 (86.9%)	3837 (84.2%)	1.26 (1.08-1.47)	0.003	1.16 (1.00-1.35)	0.05
Pharmacy fill	2925 (54.8%)	1737 (46.4%)	1.53 (1.35-1.73)	<0.0001	1.45 (1.29-1.63)	<0.0001
MACE	10.1%	10.3%	0.99 (0.83-1.18)	0.87	1.07 (0.93-1.24)	0.34
Death	3.9%	3.7%	1.05 (0.80-1.37)	0.75	1.12 (0.89-1.40)	0.34
Recurrent MI	6.9%	7.2%	0.97 (0.81-1.16)	0.73	1.07 (0.90-1.27)	0.43
Stroke	0.8%	0.9%	0.93 (0.63-1.38)	0.72	1.00 (0.69-1.45)	0.99
CV death	3.0%	2.9%	1.06 (0.79-1.42)	0.70	1.15 (0.91-1.46)	0.24
BARC 2+ bleeding	4.5%	4.0%	1.07 (0.88, 1.30)	0.49	1.14 (0.94-1.37)	0.18

CI, confidence interval; CV, cardiovascular; MACE, major adverse cardiovascular events; MI, myocardial infarction; HR, hazards ratio. Hazard ratios are presented for all rows except for persistence for which odds ratios are presented.

eTable 7. Characteristics of Patients Who Did and Did Not Use the Study Voucher

	Used Voucher (n=4393)	Never Used Voucher (n=1742)
Demographics		
Age, years	62 (54, 70)	63 (54, 72)
Male	3097 (70.50%)	1096 (62.9%)
Non-white	360 (8.19%)	280 (16.07%)
White	4033 (91.8%)	1462 (83.9%)
African American	292 (6.7%)	252 (14.5%)
Asian	78 (1.8%)	33 (1.9%)
American Indian or Alaskan Native	40 (0.9%)	19 (1.1%)
Native Hawaiian or Pacific Islander	24 (0.6%)	9 (0.5%)
Private insurance	2987 (67.99 %)	877 (50.34%)
College or higher education	3807 (76.7%)	1397 (80.2%)
Employed	2257 (51.38%)	609 (34.96%)
Household income		
\$10,000 or less	219 (5.0%)	205 (11.8%)
\$10,001 to \$20,000	376 (8.6%)	248 (14.2%)
\$20,001 to \$30,000	467 (10.6%)	177 (10.2%)
\$30,001 to \$50,000	670 (15.3%)	208 (11.9%)
\$50,001 to \$70,000	526 (12.0%)	156 (9.0%)
\$70,001 to \$100,000	479 (10.9%)	115 (6.6%)
\$100,001 to \$150,000	294 (6.7%)	90 (5.2%)
\$150,001 or greater	187 (4.3%)	53 (3.0%)
I prefer not to answer	1175 (26.7%)	490 (28.1%)
Medical History		
Prior MI	784 (17.85%)	417 (23.94%)
Prior CABG	409 (9.31%)	245 (14.06%)
Prior stroke/TIA	222 (5.05%)	159 (9.13%)
Peripheral arterial disease	200 (4.55%)	153 (8.78%)
Diabetes	1256 (28.59%)	680 (39.04%)
Hypertension	2851 (64.90%)	1290 (74.05%)
Admission Characteristics		
STEMI	2113 (48.10%)	732 (42.02%)
Weight, kg	90 (77, 104)	87 (74, 101)
Home aspirin use	1782 (40.56%)	822 (47.19%)
Home P2Y ₁₂ inhibitor use	431 (9.81%)	363 (20.84%)
Creatinine clearance, mL/min	73 (55, 91)	65 (44, 85)
Hemoglobin, g/dL	13.2 (12.0, 14.3)	12.6 (10.8, 14.0)
Multivessel disease	2042 (46.48%)	852 (48.91%)
Coronary Treatment		
PCI	4068 (92.60%)	1462 (83.93%)
CABG	49 (1.12%)	45 (2.58%)
Discharge P2Y₁₂ Inhibitor		
Clopidogrel	1252 (28.5%)	1061 (60.9%)
Ticagrelor	3141 (71.5%)	681 (39.1%)

Continuous variables expressed as median (25th, 75th percentiles). Categorical variables expressed as n (%). All p-values <0.01. CABG, coronary artery bypass graft; MI, myocardial infarction; PCI, percutaneous coronary intervention; STEMI, ST-segment elevation myocardial infarction; TIA, transient ischemic attack.

eTable 8. Post Hoc As-Treated Analyses of Medication Persistence, MACE, and Major Bleeding

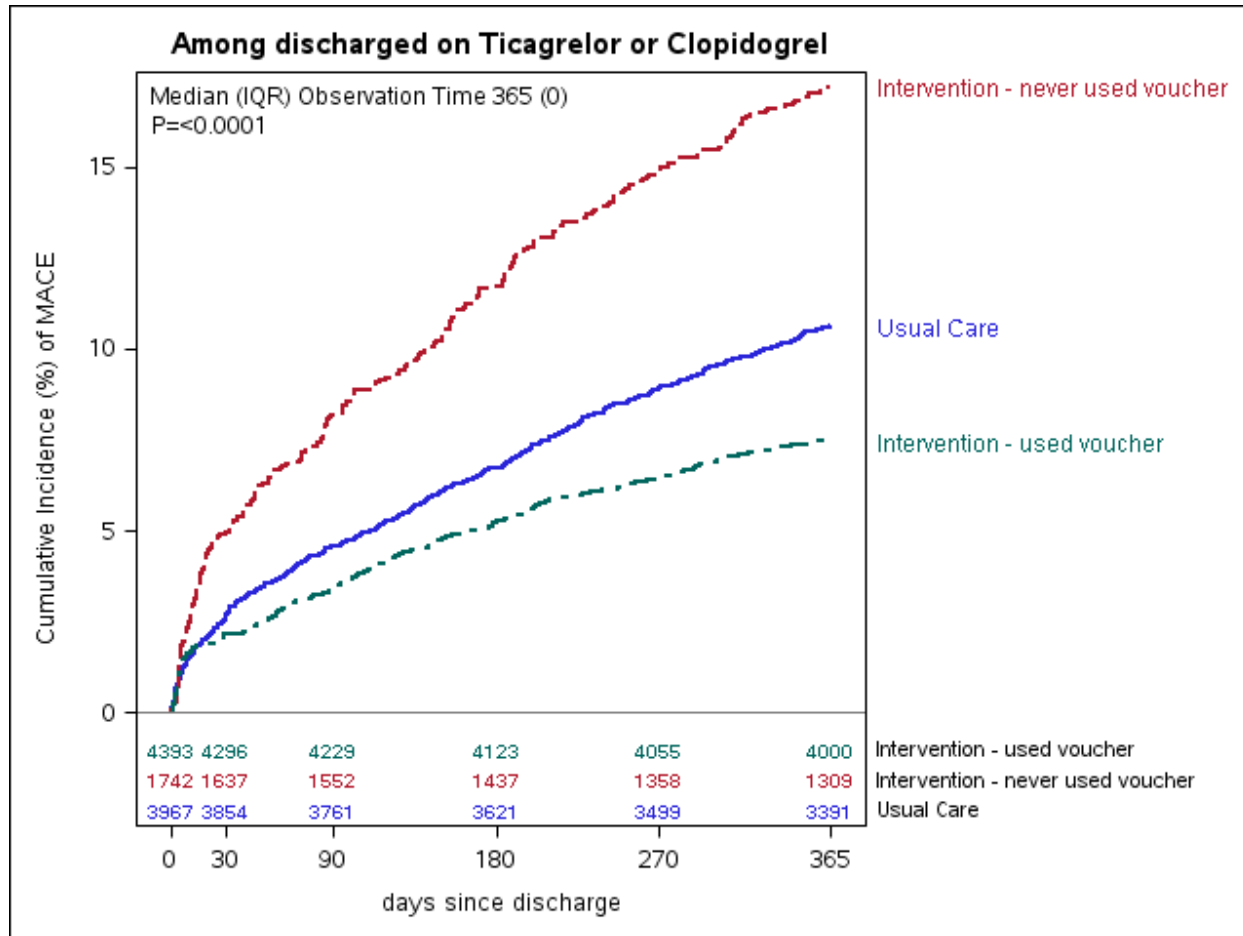
	Intervention	Usual Care	Unadjusted			Adjusted		
			Observed Difference (95% CI)	OR (95% CI)	p-value	Adjusted Difference (95% CI)	OR (95% CI)	p-value
Patient-reported P2Y₁₂ inhibitor persistence								
Intention to treat (n=10,102)	5340 (87.0%)	3324 (83.8%)	3.3% (1.0-5.5)	1.31 (1.12-1.54)	0.001	2.3% (0.4-4.1)	1.19 (1.02-1.40)	0.03
As treated (n=8,360)	3956 (90.1%)	3324 (83.8%)	6.3% (4.1-8.4)	1.79 (1.51-2.12)	<0.0001	4.6% (2.7-6.5)	1.53 (1.29-1.82)	<0.0001
As treated (filled once) (n=8,211)	3956 (90.1%)	3252 (85.2%)	4.9% (2.8-7.0)	1.60 (1.35-1.89)	<0.0001	3.6% (1.8-5.4)	1.41 (1.18-1.67)	0.001
Pharmacy-fill-based P2Y₁₂ inhibitor persistence								
Intention to treat (n=8,373)	2820 (55.2%)	1511 (46.3%)	8.9% (4.6-13.2)	1.56 (1.37-1.77)	<0.0001	7.9% (4.4-11.4)	1.47 (1.29-1.66)	<0.0001
As treated (n=6,969)	2216 (59.8%)	1511 (46.3%)	13.5% (8.7-18.3)	1.94 (1.70-2.21)	<0.0001	11.8% (7.7-15.8)	1.78 (1.55-2.03)	<0.0001
As treated (filled once) (n=6,960)	2216 (59.8%)	1508 (47.1%)	12.7% (7.9-17.5)	1.87 (1.64-2.13)	<0.0001	11.2% (7.2-15.3)	1.73 (1.52-1.98)	<0.0001
Detectable P2Y₁₂ inhibitor drug level in randomly selected blood draws								
Intention to treat (n=944)	569 (91.8%)	284 (87.7%)	4.1% (0.1-8.2)	1.56 (1.02-2.36)	0.04	5.7% (0.9-10.6)	1.86 (1.16-2.98)	0.01
As treated (n=854)	493 (93.0%)	284 (87.7%)	5.4% (1.2-9.5)	1.84 (1.16-2.93)	0.01	7.3% (2.3-12.2)	2.30 (1.38-3.84)	0.001
As treated (filled once) (n=851)	493 (93.0%)	284 (88.5%)	4.6% (0.3-8.8)	1.74 (1.07-2.82)	0.02	6.7% (1.8-11.7)	2.21 (1.30-3.74)	0.003
MACE (death, MI, or stroke)								
Intention to treat	10.2%	10.6%	-0.5% (-2.2, +1.3)	0.96 (0.80-1.15)	0.65	+0.7% (-0.7, +2.1)	1.07 (0.93-1.25)	0.35
As treated	7.5%	10.6%	-3.0% (-4.6, -1.5)	0.70 (0.58-0.84)	0.0001	-0.7% (-2.1, +0.7)	0.90 (0.76-1.08)	0.25
As treated (filled once)	7.5%	9.9%	-2.3% (-3.8, -0.8)	0.75 (0.63-0.91)	0.003	-0.3% (-1.6, +1.1)	0.96 (0.81-1.14)	0.65

eTable 8 (Continued)

	Intervention	Usual Care	Unadjusted			Adjusted		
			Observed Difference (95% CI)	OR (95% CI)	p-value	Adjusted Difference (95% CI)	OR (95% CI)	p-value
BARC 2+ bleeding								
Intention to treat	4.4%	4.1%	+0.3% (-0.6, +1.2)	1.06 (0.87-1.30)	0.56	+0.6% (-0.3, +1.5)	1.15 (0.94-1.41)	0.17
As treated	4.3%	4.1%	+0.1% (-0.8, +1.0)	1.00 (0.81-1.23)	0.95	+0.6% (-0.3, +1.5)	1.13 (0.91-1.40)	0.26
As treated (filled once)	4.5%	4.5%	+0.5% (-0.8, +1.0)	1.02 (0.82-1.25)	0.89	+0.7% (-0.3, +1.6)	1.16 (0.93-1.43)	0.18

CI, confidence interval; OR, odds ratio.
 Primary analysis uses intention to treat approach in which outcomes were compared regardless of whether the intervention group patient used the study voucher. Pre-specified secondary analyses of the as-treated population excluded intervention group patients who never used the study voucher during the 1 year after index MI discharge. Post hoc as-treated (filled once) analysis was performed as voucher use implied at least 1 drug fill for patients in the intervention group, therefore these patients were compared with usual care group patients who filled the prescription at least once.

eFigure. Cumulative Incidence Curves for Major Adverse Cardiovascular Events Among Intervention Group Patients With and Without Voucher Use and Usual Care Group Patients



eAppendix. List of Enrolling Sites and Corresponding Principal Investigators (in Order of Number Enrolled)

Reid Hospital, Richmond, IN - Zulfiqar Mirza, MD; University of Massachusetts Medical School, Worcester, MA - Nikolaos Kakouros, MD; Regions Hospital, St. Paul, MN - William B. Nelson, MD; Spectrum Health, Grand Rapids, MI - Richard McNamara, MD; Winchester Medical Center, Winchester, VA - Jason Call, MD; Indiana University Health - Bloomington (Premier Healthcare, LLC), Bloomington, IN - Andrew Ferguson, MD; Norton Audubon Hospital (Norton Heart Specialists), Louisville, KY - Vipul Panchal, MD; Vassar Brothers Medical Center (The Heart Center), Poughkeepsie, NY - Louis Kantaros, MD; Mercy Medical Center- Des Moines (Iowa Heart Center), West Des Moines, IA - Mark Tannenbaum, MD; OSF Saint Anthony Medical Center (Rockford Cardiovascular Associates), Rockford, IL - Asad Sheikh, MD; Minneapolis Heart Institute Foundation, Minneapolis, MN - M. Nicholas Burke, MD; St. Joseph's Medical Center, Stockton, CA - Sujeeth Punnam, MD; Peninsula Regional Medical Center (Delmarva Heart Research Foundation, Inc), Salisbury, MD - Steven Hearne, MD; University of Vermont Medical Center, Burlington, VT - Prospero Gogo, MD; INTEGRIS Baptist Medical Center, Inc., Oklahoma City, OK - Jeffery Sparling, MD; Lakeland Regional Medical Center (Great Lakes Heart & Vascular Institute), St. Joseph, MI - Thomas Pow, MD; Carilion Medical Center, Roanoke, VA - Mohd Mirza, MD; Missouri Baptist Medical Center, St. Louis, MO - Stuart Higano, M.D.; Yale University, New Haven, CT - Robert Attaran, MD; McLaren Northern Michigan Hospital, Petoskey, MI - Gerald Gadowski, MD; Duke University Medical Center, Durham, NC - Tracy Wang, MD; St. Mary's Medical Center (Essentia Health), Duluth, MN - Jason Schultz, MD; Methodist University Hospital, Memphis, TN - Rami Khouzam, MD; Stony Brook University Hospital (Stony Brook Medicine), Stony Brook, NY - William Lawson, ; St. Cloud Hospital (CentraCare Heart and Vascular Center), St. Cloud, MN - Bernard Erickson, MD; Palomar Medical Center (Arch Health Partners), Escondido, CA - Hamed Bayat, MD; Geisinger Medical Center - Geisinger Health, Danville, PA - James Blankenship, MD; Providence Sacred Heart Medical Center and Children's Hospital, Spokane, WA - Bryan Fuhs, MD; Lehigh Valley Hospital, Allentown, PA - James Burke, MD; Lancaster General Hospital, Lancaster, PA - Rupal Dumasia, MD; Ellis Hospital (Cardiology Associates of Schenectady P.C.), Schenectady, NY - Steven Weitz, MD; Rush Copley Medical Center (Fox Valley Clinical Research Center, LLC), Aurora, IL - Basharat Muneer, MD; St. Charles Medical Center - Bend (St. Charles Health System), Bend, OR - Bruce McLellan, MD; Wake Med Health and Hospitals, Raleigh, NC - Pratik Desai, MD; West Tennessee Healthcare, Jackson, TN - Henry Lui, MD; Methodist Medical Center (Parkway Cardiology Associates, PC), Oak Ridge, TN - L Todd Justice, MD; Robert Packer Hospital (Donald Guthrie Foundation), Sayre, PA - Edo Kaluski, MD; York Hospital, York, PA - Paul Tolerico, MD; Carle Foundation Hospital, Urbana, IL - Sanjay Mehta, MD; Huntington Memorial Hospital, Pasadena, CA - Raul Fernando Roth, MD; Medical Center Navicent Health (formerly Medical Center of Central Georgia), Macon, GA - Mark Dorogy, MD; Shady Grove Medical Center (Adventist HealthCare), Rockville, MD - Geetha Pinto, MD; United Heart and Vascular Clinic (Allina Health), St. Paul, MN - Kenneth Baran, MD; Beth Israel Deaconess Medical Center, Boston, MA - Eli Gelfand, MD; Ball Memorial Hospital (IU Health), Muncie, IN - Michael Moran, MD; Gundersen Lutheran Medical Center (Gundersen Health System), La Crosse, WI - Sampooranima Setty, MD FACC; Mayo Clinic Health System - Franciscan Healthcare, La Crosse, WI - S. Michael Gharacholou, MD; CaroMont Regional Medical Center (CaroMont Heart), Gastonia, NC - Dustin Letts, MD; University of Iowa Hospitals and Clinics, Iowa City, IA - Phillip Horwitz, MD; Jewish Hospital, Louisville, KY - Lorrel Brown, MD; Aurora St. Luke's Medical Center, Milwaukee, WI - Anthony DeFranco, MD; University of Colorado Hospital, Aurora, CO - John Messenger, MD; UNC Regional Physicians Carolina Cardiology, High Point, NC - Steven Rohrbeck, MD; Washington Regional Medical Center, Fayetteville, AR - Joel Carver, M.D.; Memorial Hospital of South Bend, South Bend, IN - Shakil Aslam, MD; Northside Hospital, Atlanta, GA - Jack Chen, MD, FACC, FSCAI; Saint Dominic Hospital (Jackson Cardiology Associates), Jackson, MS - Harsha Nagarajarao, MD; Robert Wood Johnson University Hospital - Somerset, Somerville, NJ - Sharan Mahal, MD, FACC; Doylestown Hospital, Doylestown, PA - Steven Guidera,

MD; The Valley Hospital, Ridgewood, NJ - Janet Strain, MD; Springhill Memorial Hospital (Cardiology Associates of Mobile, Inc), Mobile, AL - Jason Cole, MD; Alaska Heart Institute, Anchorage, AK - Seth Krauss, MD; Suburban Hospital - NIH Heart Center, Bethesda, MD - Gregory Kumkumian, MD; AtlantiCare Regional Medical Center, Pomona, NJ - Mayuri Patel, MD; Lexington Medical Center (Lexington Cardiology), West Columbia, SC - Robert Malanuk, MD; Community Heart and Vascular Hospital (Community Health Network, Inc. d/b/a a facility of Community Hospital East), Indianapolis, IN - Jennifer Sams, MD; Holy Name Medical Center, Teaneck, NJ - Angel Mulkay, MD; Mission Health System (Asheville Cardiology Associates), Asheville, NC - D. Michael Unks, MD; Sinai Hospital of Baltimore, Baltimore, MD - Mauro Moscucci, MD, MBA; Huntsville Hospital (Heart Center Research, LLC), Huntsville, AL - Vernon Ross Hunter, MD; Southeastern Regional Medical Center, Lumberton, NC - Christopher Walters, MD; St. Johns Hospital (Prairie Education & Research Cooperative), Springfield, IL - Frank Mikell, MD; St. Clare Health Center, Fenton, MO - Anish Thomas, MD; McLaren Macomb, Mount Clemens, MI - Mark Zainea, MD; Aultman Hospital, Canton, OH - Brendan Duffy, MD; Pinehurst Medical Clinic/FirstHealth Moore Regional Hospital, Pinehurst, NC - Patrick (PJ) Simpson, MD; St. Joseph Health Center, St. Charles, MO - Mark Taber, MD; Sacred Heart Hospital Pensacola, Pensacola, FL - Rohit Amin, MD; Renown Regional Medical Center, Reno, NV - Chanwit Roongsritong, MD; Lourdes Cardiology Services, Voorhees, NJ - Ian Joffe, MD; Tallahassee Research Institute, Tallahassee, FL - Wayne Batchelor, MD; MultiCare Institute for Research and Innovation (Cardiac Study Center), Puyallup, WA - Vinay Malhotra, MD; McLaren Flint, Flint, MI - Syed Ahmed, MD; Providence Health Center, Waco, TX - Charles Shoultz III, MD, FACC; Billings Clinic Hospital (Billings Clinic), Billings, MT - Brian Rah, MD; Geisinger Wyoming Valley, Wilkes-Barre, PA - Kishore Harjai, MD; New Hanover Regional Medical Center, Wilmington, NC - William Smith, MD; University of Alabama at Birmingham, Birmingham, AL - Vera Bittner, MD; Bryan Medical Center (Bryan Heart), Lincoln, NE - Robert Hibbard, MD; Holy Spirit Hospital (Spirit Physician Services INC dba Holy Spirit Medical Group), Camp Hill, PA - Andreas Wali, MD, FACC, FSCAI; Queen's Medical Center, Honolulu, HI - Michael Brodsky, MD; Arkansas Heart Hospital (Arkansas Site Management Services), Little Rock, AR - David Mego, MD; Covenant Medical Center, Inc., Saginaw, MI - Manoj Sharma, MD; Anne Arundle Health System Research Institute, Annapolis, MD - James Welker, DO; Centra Stroobants Cardiovascular Center, Lynchburg, VA - Fadi El-Ahdab, MD; Saint Luke's Hospital, Kansas City, MO - Adnan Chhatriwalla, MD; St. Mary's Medical Center (Kansas City Cardiology), Blue Springs, MO - Michael Liston, MD; Memorial Hospital (Advanced Heart Care), Belleville, IL - Omar Almousalli, MD; Baptist Medical Center Jacksonville (Baptist Heart Specialists), Jacksonville, FL - Ashwini Davuluri, MD; Chambersburg Hospital, Chambersburg, PA - Aylmer Tang, MD; Saint Francis Medical Center (OSF Healthcare Cardiovascular Institute, Peoria, IL - Sudhir Mungee, MD; Virginia Cardiovascular Specialists, Richmond, VA - Shelton Thomas, MD; Sentara Norfolk General Hospital (Sentara Cardiovascular Research Institute), Norfolk, VA - Scott Robertson, MD; Norton Brownsboro Hospital (Norton Heart Specialists), Louisville, KY - Vipul Panchal, MD; Memorial Healthcare System, Hollywood, FL - Johnathon Roberts, MD; Providence Hospital (Providence Cardiology LLC), Columbia, SC - Bashir Lone, MD; Baptist Memorial Hospital - Memphis (Baptist Clinical Research Institute), Memphis, TN - Frank McGrew, MD; Allegheny General- Cardiovascular Institute, Pittsburgh, PA - Ramzi Khalil, MD; University Community Hospital Inc dba Florida Hospital Tampa, Tampa, FL - Charles Lambert, MD, PhD; Loma Linda University Health, Loma Linda, CA - Anthony Hilliard, MD; Fountain Valley Regional Hospital and Medical Center (California Heart Specialist), Huntington Beach, CA - Majed Chane, MD; Bassett Medical Center (Bassett Healthcare Network), Cooperstown, NY - Dhananjai Menzies, MD; Memorial Hospital, York, PA - Manu Rajachandran, MD; AnMed Health, Anderson, SC - Brent McLaurin, MD; Legacy Meridian Park Medical Center (Legacy Research Institute), Portland, OR - Eli Rosenthal, MD; Carr Cardiology, Oceanside, CA - Kenneth Carr, MD; St. John Hospital & Medical Center, Detroit, MI - Thomas Lalonde, MD; Northeast Arkansas Baptist Memorial Hospital (NEA Baptist Clinic), Jonesboro, AR - Dharmendra Patel, MD; UW Medicine Valley Medical Center- (Southlake Research), Renton,, WA - Sumeet Subherwal, MD; University of Chicago Medical Center, Chicago, IL - Jonathan Paul, MD; Cedars Sinai Medical Center, Los Angeles, CA - Timothy

Henry, MD; Baylor Scott & White Health, Round Rock, TX - Vijay Divakaran, MD; St. Mary's Health Center, St. Louis, MO - Manoj Eapen, MD; St. Anthony's Medical Center, St. Louis, MO - Charles Carey, MD; University of Michigan, Ann Arbor, MI - P. Michael Grossman, MD; Los Robles Hospital & Medical Center, Thousand Oaks, CA - Shahrzad Shareghi, MD; St. Peter's Hospital (Albany Associates in Cardiology a division of St Peter's Health Care Partners Medical Associates, PC), Albany, NY - Robert Phang, MD; University Hospitals of Cleveland, Cleveland, OH - Sri Krishna Madan Mohan, MD; Baptist Health Lexington, Lexington, KY - Michael Jones, MD; Hillcrest Medical Center (Oklahoma Heart Institute), Tulsa, OK - Wayne Leimbach, MD; University of Virginia Health System, Charlottesville, VA - Lawrence Gimple, MD; Richmond University Medical Center, Staten Island, NY - Dennis Bloomfield, MD; Methodist Texsan Hospital (South Texas Cardiovascular Consultants, PLLC), San Antonio, TX - Jose Perez, MD; Bellin Memorial Hospital, Inc. d/b/a/ Cardiology Associates of Bellin Health, Green Bay, WI - James Rider, MD; Bay Regional Medical Center d/b/a McLaren Bay Region, Bay City, MI - Daniel Lee, MD; The Danbury Hospital (Western Connecticut Health Network), Danbury, CT - Hal Wasserman, MD; Jackson Madison County General Hospital (The Jackson Clinic, PA), Jackson, TN - James Crenshaw, MD; Englewood Hospital and Medical Center, Englewood, NJ - Richard Goldweit, MD; Altru Health System, Grand Forks, ND - Rebeea Aboufakher, MD; Univ. of Texas/Memorial Hermann Hospital, Houston, TX - H. Vernon Anderson, MD; Medical University of South Carolina, Charleston, SC - Thomas Todoran, MD; ProMedica Toledo Hospital, Toledo, OH - Adil Karamali, MD; Wheaton Franciscan Healthcare-All Saints, Racine, WI - James Tierney, MD; Torrance Memorial Medical Center, Torrance, CA - Mark Lurie, MD; Southwest General Health Center, Middleburg Heights, OH - Trilok Sharma, MD; Presence Saint Joseph Medical Center, Joliet, IL - Govind Ramadurai, MD; Rapid City Regional Hospital (Black Hills Cardiovascular Research), Rapid City, SD - Norman Ferrier, MD; University of Pittsburgh Medical Center - Shadyside Hospital, Pittsburgh, PA - Sushant Sharma, MD; Franciscan Physician Network - Indiana Heart Physicians, Indianapolis, IN - Harry Genovely, MD; St. Luke's Hospital Association, Duluth, MN - Scott Mikesell, DO; Athens Regional Medical Center (Athens Regional Cardiology Group), Athens, GA - Kent Nilsson, MD; Icahn School of Medicine at Mount Sinai, New York, NY - Jeffrey Bander, MD; St. Joseph Mercy Oakland, Pontiac, MI - Michele DeGregorio, MD; Johns Hopkins University, Columbia, MD - William Herzog, MD; Kettering Medical Center, Kettering, OH - Franklin Handel, MD; St. Elizabeth Medical Center, Utica, NY - RaKesh Bhan, MD; Genesys Regional Medical Center, Grand Blanc, MI - David Dobies, MD; Shands University of Florida, Gainesville, FL - David Anderson, MD; Drexel University, Philadelphia, PA - Howard Eisen, MD; Kootenai Health (Kootenai Heart Clinics, LLC), Coeur d' Alene, ID - Marek Janout, MD; Saint Mary's Regional Medical Center, Reno, NV - Devang Desai, MD; Centura Health- Penrose St. Francis Health Services, Colorado Springs, CO - Chris Kim, MD; Forrest County General Hospital (Hattiesburg Clinic, P.A.), Hattiesburg, MS - Craig Thieling, MD; St. Joseph Medical Center (Kansas City Cardiology), Kansas City, MO - Michael Liston, MD; Sarasota Memorial Hospital (Intercoastal Medical Group), Sarasota, FL - Ricardo Yaryura, MD; Palestine Regional Medical Center (Grace Research, LLC), Palestine, TX - Gaurav Aggarwala, MD; Lakeland Regional Medical Center (Watson Clinic Center for Research, Inc.), Lakeland, FL - Kevin Browne, MD; Tennova Healthcare- Turkey Creek Medical Center, Knoxville, TN - Malcolm Foster, MD; Baylor Scott & White Health, Temple, TX - Jeffrey Michel, MD; The Heart Hospital Baylor Plano, Plano, TX - David Brown, MD; North Kansas City Hospital, North Kansas City, MO - Zafir Hawa, MD; Wake Forest Baptist Health, Winston-Salem, NC - Michael Kutcher, MD; Herman Clinical Research, LLC, Suwanee, GA - Lee Herman, MD; Boston Medical Center, Boston, MA - Alice Jacobs, MD; The Medical Center of Aurora (Aurora Denver Cardiology Associates), Aurora, CO - John Ord, MD; Nebraska Heart Hospital (Nebraska Heart Institute), Lincoln, NE - Omar Nass, MD; Henrico Doctors' Hospital, Richmond, VA - Minh Bui, MD; Palmetto Heart/Health Systems-Palmetto Richland Hospital, Columbia, SC - Jonathan (J) Hewett, MD; Rochester General Hospital - Guide Star Clinical, Rochester, NY - Jeremiah Depta, MD; Rex Hospital, Raleigh, NC - Mohit Pasi, MD; Oklahoma Heart Hospital Research Foundation, Oklahoma City, OK - Thomas McGarry, MD; Medicor Cardiology, PA, Bridgewater, NJ - Jason Hall, MD; Baptist Hospital (Langhorne Cardiology Consultants, Inc.), Pensacola, FL - G. Ramon Aycock, MD; North Atlanta Heart

& Vascular Center P.C. (Northside Hospital Forsyth), Cumming, GA - Bhaskar Reddy, MD, FACC; Verde Valley Medical Center, Cottonwood, AZ - Samuel Butman, MD; Christus Santa Rosa New Braunfels, New Braunfels, TX - Jamison Wyatt, MD; St. Joseph's Hospital (Comprehensive Research Inst.), Tampa, FL - Saihari Sadanandan, MD; Winter Haven Hospital, Winter Haven, FL - Kollagunta Chandrasekhar, MD; St. Agnes Hospital (Maryland Cardiovascular Specialists), Baltimore, MD - Kabir Yousuf, MD; CHI Health Bergan Mercy Medical Center (CHI Health Research Center), Omaha, NE - Jeffrey Carstens, MD; Washington University School of Medicine, St. Louis, MO - Richard Bach, MD; Salinas Valley Memorial Hospital (Salinas Valley Memorial Healthcare System), Salinas, CA - Robert Wlodarczyk, MD; St. Vincent's Medical Center- Southside, Jacksonville, FL - Peter Kuhlman, MD; Providence-Providence Park Hospital, Southfield, MI - Souheil Saba, MD; Our Lady of Lourdes Medical Center (Cardiovascular Associates of the Delaware Valley), Haddon Heights, NJ - Vijayendra Verma, MD; Maricopa Medical Center, Phoenix, AZ - Mehrdad Saririan, MD; Ochsner Medical Center (Ochsner Clinic Foundation), New Orleans, LA - Marc Effron, MD; Stamford Hospital, Stamford, CT - David Hsi, MD; Christian Hospital (St. Louis Heart and Vascular), St. Louis, MO - George Kichura, MD; Cardiovascular Institute of Northwest Florida, Panama City, FL - Michael Morrow, MD; Kent Hospital, Warwick, RI - Chester Hedgepeth, MD, PhD; St. Vincent Hospital and Health Care Centers, Inc, Indianapolis, IN - Gregory Elsner, MD; Florida Hospital (Adventist Health System), Orlando, FL - Hani Seifein, MD, FACC; UHS Wilson Medical Center, Johnson City, NY - Afzal Rehman, MD, PhD; HealthEast St. Joseph's Hospital, St. Paul, MN - Carmelo Panetta, MD; Genesis Medical Center, Davenport, IA - Eric Dippel, MD; Legacy Good Samaritan Medical Center (Legacy Research Institute), Portland, OR - Eli Rosenthal, MD; MedStar Southern Maryland Hospital Center, Clinton, MD - Mun Hong, MD; Waukesha Memorial Hospital (ProHealth Care, Inc.), Waukesha, WI - Lisa Schmitz, DO; Norton Hospital (Norton Heart Specialists), Louisville, KY - Vipul Panchal, MD; Rapides Regional Medical Center (Alexandria Cardiology Clinic), Alexandria, LA - Naseem Jaffrani, MD; Westchester Medical Center -New York Medical College, Valhalla, NY - Robert Timmermans, MD; Medical College of Wisconsin and Froedtert Hospital, Milwaukee, WI - Nicole Lohr, MD; Memorial Hospital of Jacksonville (First Coast Cardiovascular Institute), Jacksonville, FL - Sumant Lamba, MD; Guadalupe Regional Medical Center, Seguin, TX - Jamison Wyatt, MD; Wellspan HEALTH- Ephrata, Ephrata, PA - Paul Tolerico, MD; DLP Marquette General Hospital (UP Health Systems - Marquette), Marquette, MI - John Pap, MD; DePaul Health Center, Bridgeton, MO - Ardaman Nanda, MD; University of Cincinnati, Cincinnati, OH - Charles Hattemer, MD; Cape Cod Research Institute (Cape Cod Hospital), Hyannis, MA - Richard Zelman, MD; Georgia Regents Medical Center (Georgia Regents University), Augusta, GA - Vishal Arora, MD; Saint Michael's Medical Center - New Jersey, Newark, NJ - Abbas Shehadeh, MD; Riverside Medical Center, Riverside, CA - Patrick Hu, MD; Mercy Rockford Health System (Rockford Health Physicians), Rockford, IL - Ebert Caceres, MD; Roper Saint Francis Healthcare/Low Country Cardiology, Charleston, SC - Scott Woodfield, MD; Largo Medical Center - The Heart Institute at Largo, Largo, FL - Jesse Klein, DO; Geisinger Community Medical Center, Scranton, PA - Stephen Voyce, MD, FACC, FACP; Ocala Regional Medical Center (Ocala Research Institute), Ocala, FL - Rakesh Prashad, MD; Advanced Research Associates, Hodges, SC - Priya Kumar, MD; Community Hospital of Munster, Munster, IN - Wail Asfour, MD; Centura Health- St. Anthony Hospital, Lakewood, CO - John Altman, MD; John H. Stroger Jr., Hospital of Cook County, Chicago, IL - Rami Doukky, MD; Cooper University Hospital (Cardiovascular Associates of the Delaware Valley), Haddon Heights, NJ - Georges Kaddissi, MD; Alpena Regional Hospital (Endeavor Medical Research), Alpena, MI - Abraham Salacata, MD; Coliseum Medical Center, Macon, GA - Maria Bartlett, MD; Menorah Medical Center (Midwest Heart and Vascular Specialists), Overland Park, KS - Stephen Bloom, MD; Morton Plant Mease Health Care, Inc (Baycare Medical Group), Clearwater, FL - Parag Patel, MD; Abington Memorial Hospital, Abington, PA - Bruce Klugherz, MD; Halifax Health Medical Center (Daytona Heart Group), Daytona Beach, FL - Vance Wilson, MD; Reading Hospital- Clinical Trials, West Reading, PA - Eric Elgin, MD; Steward St. Elizabeth's Medical Center of Boston, Brighton, MA - Faisal Khan, MD; Hunterdon Medical Center (Hunterdon Cardiovascular Associates), Flemington, NJ - Andrew Rudnick, MD; University of Louisville Hospital, Louisville, KY - Lorrel Brown, MD; Sparks Regional Medical Center, Fort Smith, AR - Robert

Parris, MD; Columbia St. Mary's Hospital, Milwaukee, WI - Joshua Liberman, MD; Willis Knighton Medical Center (Grace Research, LLC), Bossier City, LA - William Eaves, MD; WILLIS KNIGHTON MEDICAL CENTER INC-NORTH. CRNA GROUP (Advanced Cardiovascular Specialists), Shreveport, LA - James Smith, MD; CHI - Creighton University Medical Center, Omaha, NE - Jeffrey Carstens, MD; St. Joseph's Regional Medical Center, Paterson, NJ - Mahesh Bikina, MD; Northridge Hospital Medical Center, Northridge, CA - Mehrdad Ariani, MD; Ronald Reagan UCLA Medical Center, Los Angeles, CA - Eric Yang, MD; Grady Health, SE Atlanta, GA - Elizabeth Ofili, MD; Baptist South Hospital - Baptist Health Research Institute, Jacksonville, FL - Bharat Gummadi, MD; Professional Healthcare of Pinellas, Inc, St. Petersburg, FL - Fadi Saba, MD; Northside Hospital, St Petersburg, FL - Andrew Rosenthal, MD; Methodist South Hospital, Memphis, TN - Rami Khouzam, MD; Carteret Medical Group, Morehead City, NC - Michael Rave, MD; Baptist Medical Center Beaches (Baptist Health Research Institute), Jacksonville Beach, FL - Ruple Galani, MD; Gwinnett Medical Center, Lawrenceville, GA - Yuri Pride, MD-ACS; Porter Regional Hospital (Porter Physician Services LLC DBA NICKP), Valparaiso, IN - Keith Atassi, MD; Mercy Hospital Joplin, Joplin, MO - William R. Craig, MD; St. Joseph Hospital West, St. Louis, MO - Sam Bishara, MD; Manatee Memorial Hospital, Bradenton, FL - S. Jay Mathews, MD; St. Vincent Medical Center - Riverside, Jacksonville, FL - Samer Garas, MD; WellStar Research Institute, Marietta, GA - George Kramer, MD; Henry Ford Health System, Detroit, MI - Khaled Abdul-Nour, MD; University of South Alabama, Mobile, AL - Ghulam Mustafa Awan, MD; Bridgeport Hospital, Bridgeport, CT - Edward Tuohy, MD; Houston Methodist Sugar Land Hospital, Sugar Land, TX - Byron Ellis, MD; Grand View Hospital (Grand View - Lehigh Valley Health Services, Buxmont Cardiology Division), Sellersville, PA - Paul Hermany, MD; Good Samaritan Hospital, Dayton, OH - Sudhkar Maraboyina, MD; The Nebraska Medical Center (University of Nebraska), Omaha, NE - Gregory Pavlides, MD; Bethesda Hospital East - Daniel Heart & Vascular Center, Boynton Beach, FL - George Daniel, MD, FACC; Baylor Medical Center McKinney (Baylor Health), McKinney, TX - David Brown, MD; Mercy Hospital, Miami, FL - Manual Mayor, MD; Bay Front Health, St. Petersburg Research, St Petersburg, FL - Ravikiran Korabathina, MD, MPH; Virtua Memorial Hospital (Virtua The Cardiology Group), Moorestown, NJ - Thomas Galski, DO; Flagstaff Medical Center, Flagstaff, AZ - Omar Wani, MD; University Medical Center of Southern Nevada, Las Vegas, NV - Chowdhury Ahsan, MD; Nova Clinical Research, LLC, Bradenton, FL - Christopher Davis, MD; Florida Cardiology Group, Hudson, FL - Gopal Chalavarya, MD; Bay Area Total Health, Webster, TX - Pamela Dugano-Daphnis, MD; Hospital Menonita de Cayey (Caguas Cardio Center), Caguas, PR - Pedro J. Colon Hernandez, MD; Penobscot Bay Medical Center, Rockport, ME - Christopher Gelwix, MD; Saint John Macomb Oakland Hospital-Providence Health, Warren, MI - SRINIVAS KONERU, MD; Ruby Memorial Hospital - WVU Heart Institute, Morgantown, WV - Jason Moreland, MD; Texas Health - Presbyterian Hospital of Dallas, Dallas, TX - Carter King, MD; Olympia Medical Center (MACKS Research Group, Inc.), Beverly Hills, CA - Ramprasad Dandillaya, MD; South Miami Hospital (Pharma Research International, Inc), Miami, FL - Jorge Cuello, MD; Sacred Heart Hospital on the Emerald Coast (Sacred Heart Medical Group - Cardiology), Miramar Beach, FL - Stephen Phlaum, MD; Freeman Hospital (Freeman Health System), Joplin, MO - William John Nicholas, MD; Humble Surgical Hospital (Houston Heart and Vascular Associates), Humble, TX - Raymond Little, MD; Oakwood Hospital - Dearborn (Oakwood Healthcare Inc.), Dearborn, MI - George Nahhas, MD; Pish Medical Associates, Inc.(Union Town Hospital), Uniontown, PA - Richard Pish, MD; Cardiovascular Consultants Heart Center, Fresno, CA - Michael Gen, MD; Atlanta Medical Center (Primary Care Specialist), Atlanta, GA - Courtney Shelton, MD; Broward Health Medical Center, Ft. Lauderdale, FL - Arnoux Blanchard, MD; Clara Maass Medical Center-Barnabas Health, Belleville, NJ - ELIE CHAKHTOURA, MD; Centinela Hospital Medical Center, Inglewood, CA - Ali Meibodi, MD; North Hills Medical Research, Inc, North Richland Hills, TX - John Gabriel, MD; Community Clinical Research Center, Anderson, IN - Preetham Jetty, MD