

Supplementary files

Supplementary Table S1. Expression and survival information of PPAR α in different solid tumors from TCGA data set.

Tumor type	Normal	Tumor	PPAR α in tumor	PPAR α survival	Survival p value
BLCA	19	408	Down	Non-significant	0.63
BRCA	114	1097	Down	Non-significant	0.98
COAD	41	286	Down	Non-significant	0.55
LUAD	59	515	Non-significant		
KIRC	72	533	Down	Significant	0.00039***
PAAD	4	178	Non-significant		
PRAD	52	497	Down	Non-significant	0.37
LGG	0	503	--		
LUSC	52	503	Up	Non-significant	0.98
HNSC	44	520	Non-significant		
KIPR	32	290	Down	Non-significant	0.62
ESCA	11	184	Non-significant		
OV	0	302	--	Non-significant	0.54
LIHC	50	371	Non-significant		
CESC	3	305	Non-significant		
READ	10	166	Non-significant		
UCEC	35	546	Down	Non-significant	0.11
THYM	2	121	Non-significant		
THCA	59	505	Down	Non-significant	0.48
GBM	5	156	Non-significant		
SARC	2	260	Non-significant		
PCPG	3	179	Down	Non-significant	0.18
ACC	0	68	--		
UVM	0	79	--		
MESO	0	87	--		
UCS	0	56	--		
TGCT	0	129	--		
CHOL	9	36	Down	Non-significant	0.6
KICH	25	67	Non-significant		
DLBC	0	41	--		
SKCM	1	472	--		
STAD	34	415	Non-significant		

*** p < 0.0001

Supplementary Figure S1

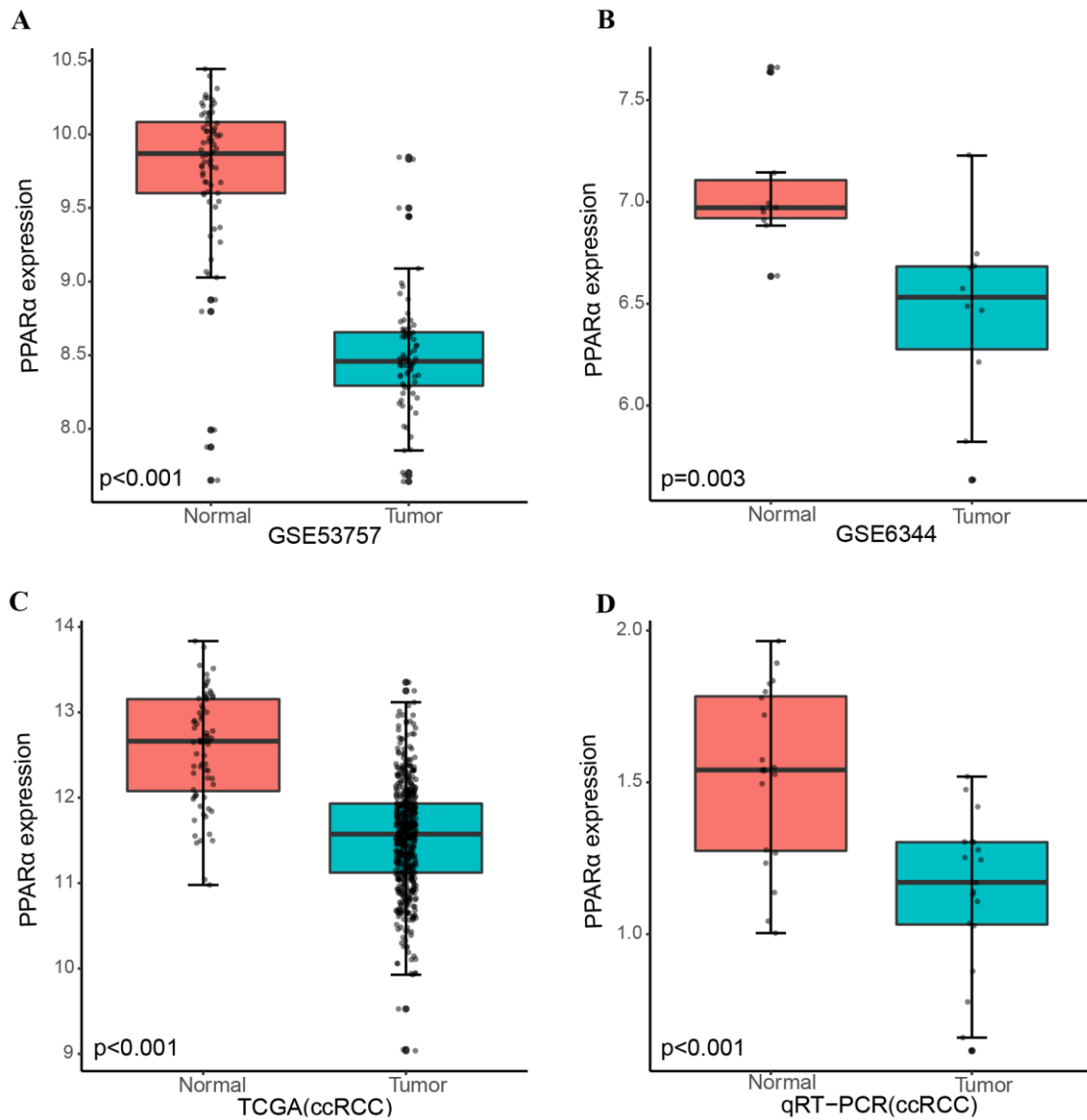


Figure S1. PPAR α expression is lower in ccRCC tumor tissues compared with the adjacent normal tissues. Two microarray data from the GEO database, RNA-Seq data from the TCGA database and the qRT-PCR result from department of biological repositories exhibits a strong downregulation of PPARA expression. (A) ccRCC data of GSE53757, (B) ccRCC data of GSE6344 (C) ccRCC data of TCGA database, (D) qRT-PCR result from department of biological repositories. The p value is indicated.

Supplementary Figure S2

Forest plot summary of analyses of disease-free survival

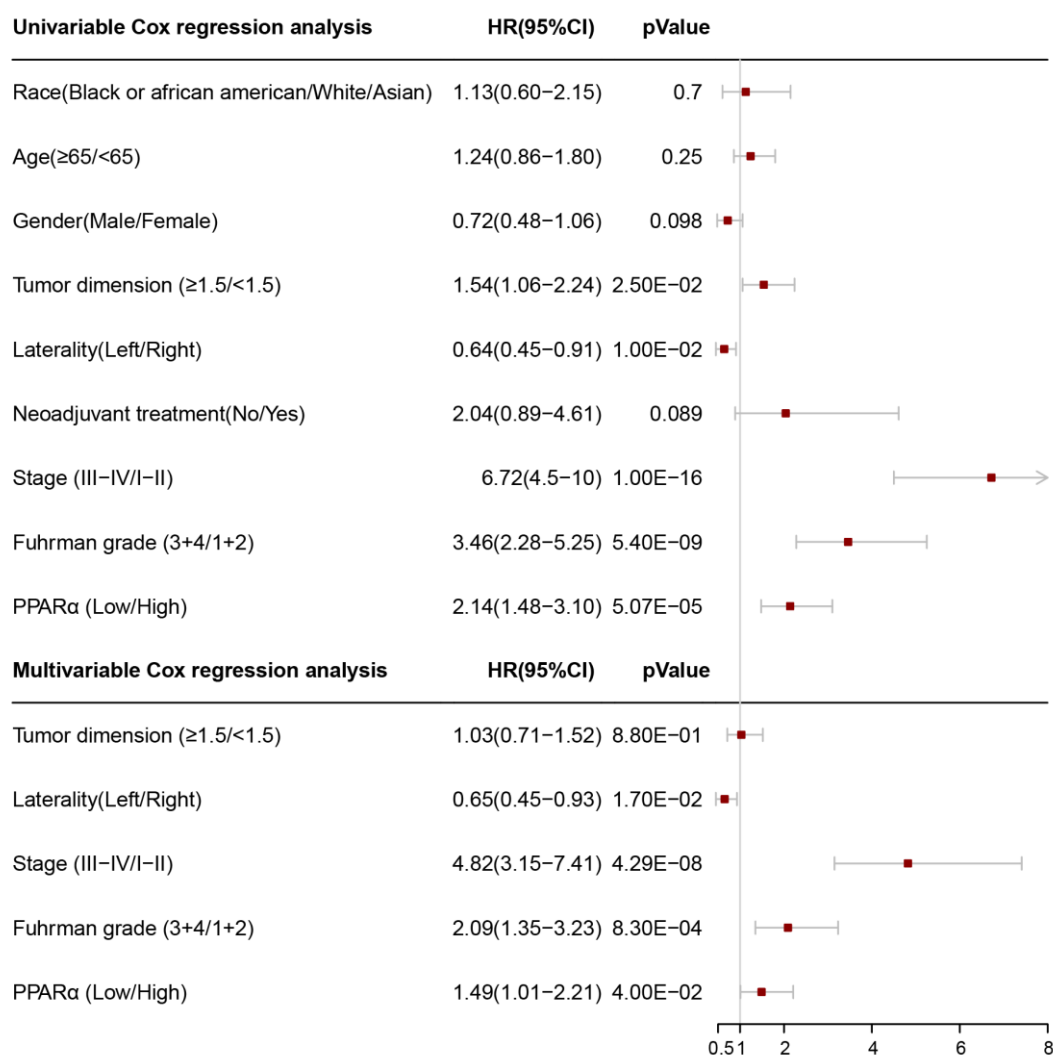


Figure S2. Forest plot summary of analyses of disease-free survival (DFS). Univariable and multivariable analyses of race, age, gender, tumor demension, laterality, neoadjuvant therapy, stage, Fuhrman grade and PPAR α expression group for disease-free survival (DFS) in ccRCC patients. The red squares on the transverse lines represent the hazard ratio (HR), and the gray transverse lines represent 95% CI.