

Supplementary Information

PAR-4 overcomes chemo-resistance in breast cancer cells by antagonizing cIAP1

Haihong Guo^{1,3,#}, Fabian Treude^{1,#}, Oliver H. Krämer², Bernhard Lüscher¹, Jörg Hartkamp^{1,3,*}

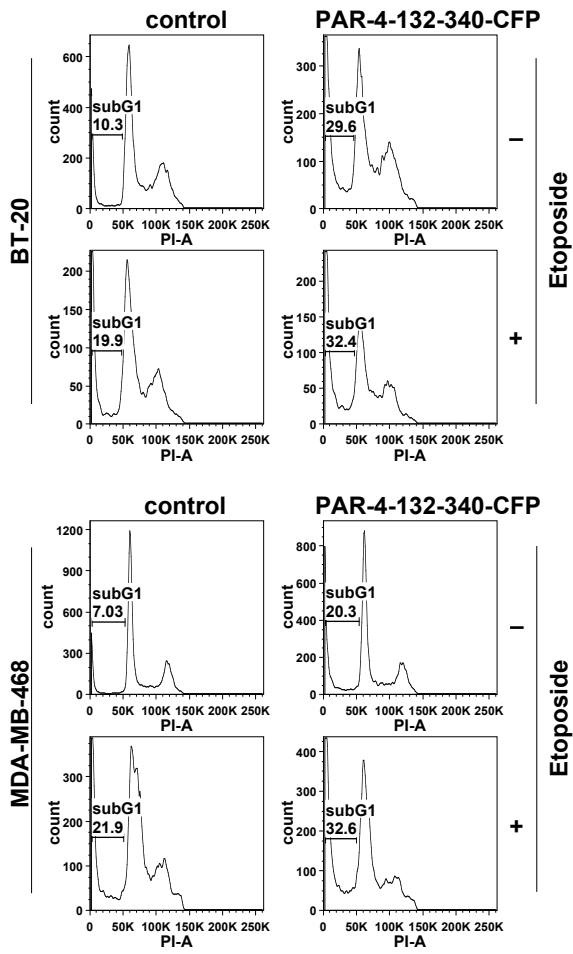
¹Institute of Biochemistry and Molecular Biology, Medical School, RWTH Aachen University, 52074 Aachen, Germany

²Department of Toxicology, University Medical Center, 55131 Mainz, Germany

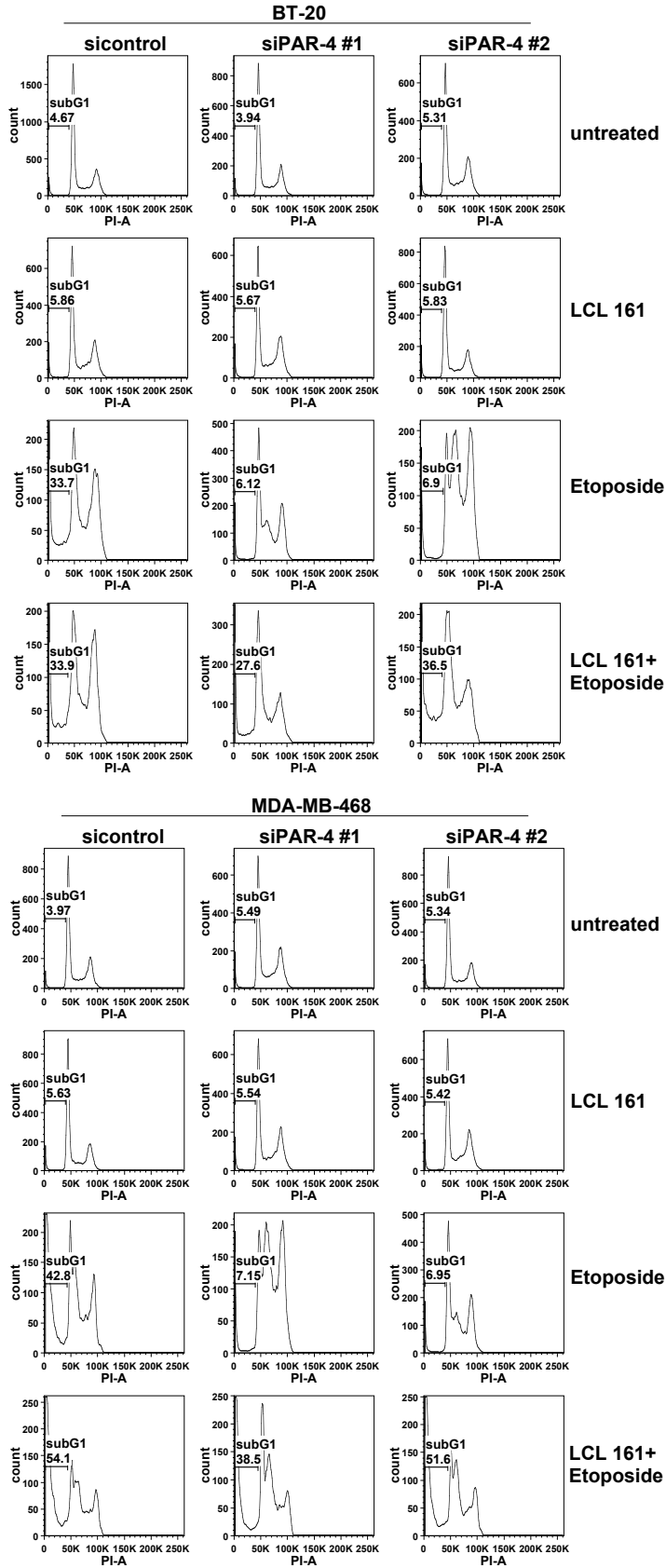
³Present address: Clinic for Neuropathology, Medical School, RWTH Aachen University, 52074 Aachen, Germany (HG); Biofrontera Bioscience GmbH, 51377 Leverkusen, Germany (JH)

#These authors contributed equally to this work.

*Correspondence should be addressed to J.H. (jhartkamp@gmx.de).

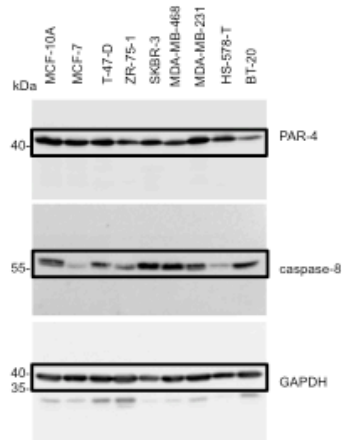


Supplementary Figure S1: Histogram belonging to Figure 4c.

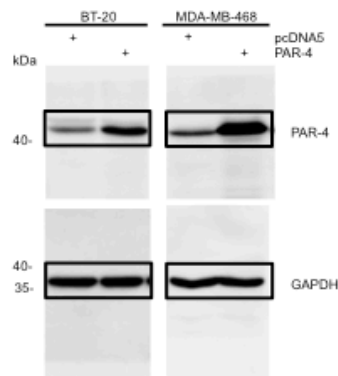


Supplementary Figure S2: Histogram belonging to Figure 6b.

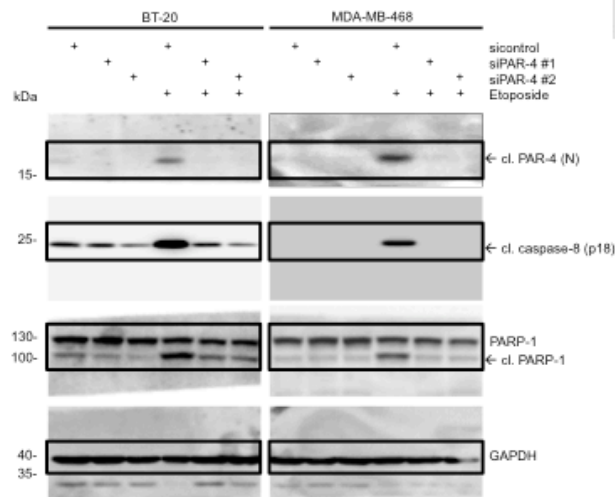
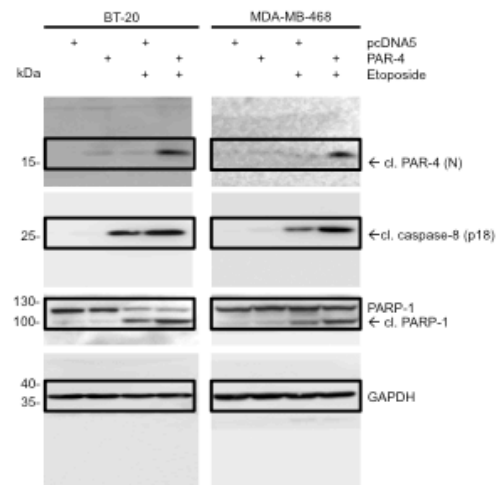
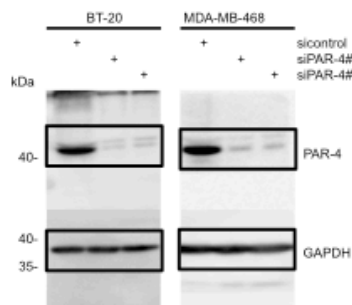
Belong to Figure 1a



Belong to Figure 1b



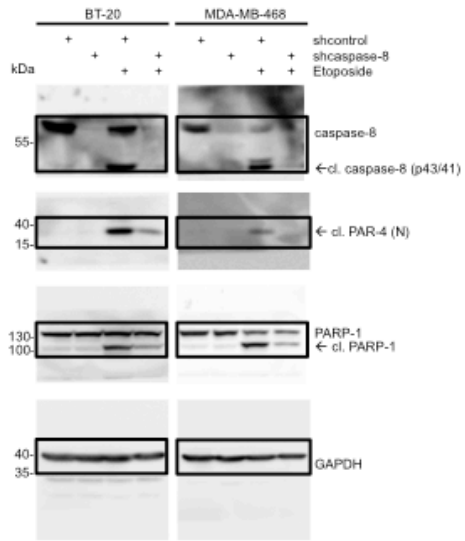
Belong to Figure 2a



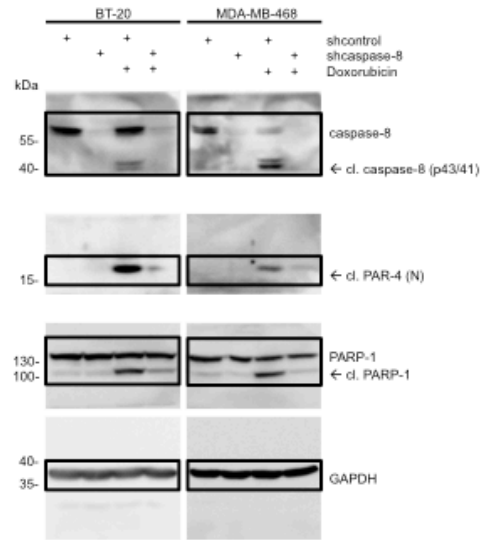
Supplementary Figure S3:

Uncropped original images of Western blots are shown belonging to Figure 1 and 2.

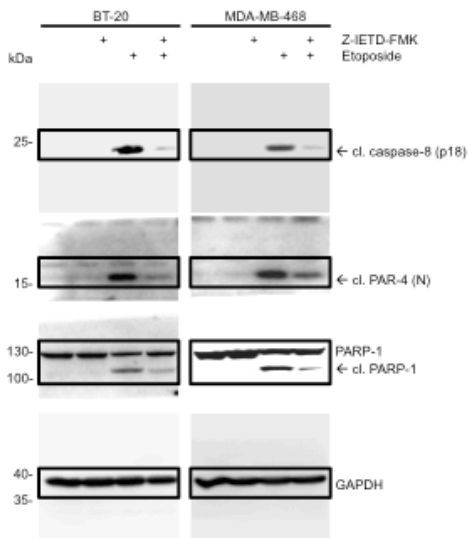
Belong to Figure 3a



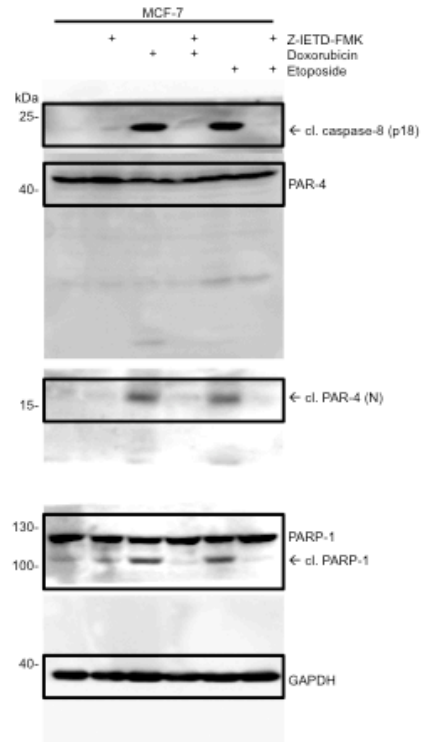
Belong to Figure 3b



Belong to Figure 3d



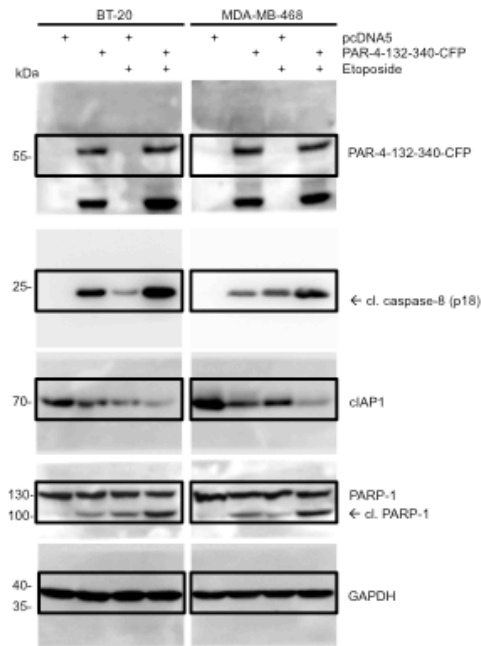
Belong to Figure 3e



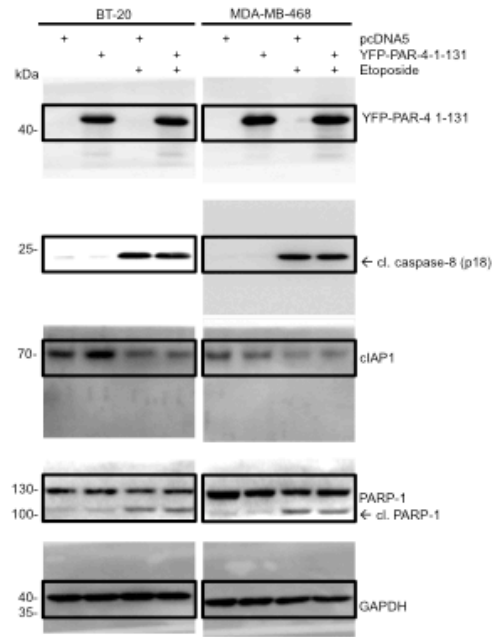
Supplementary Figure S4:

Uncropped original images of Western blots are shown belonging to Figure 3.

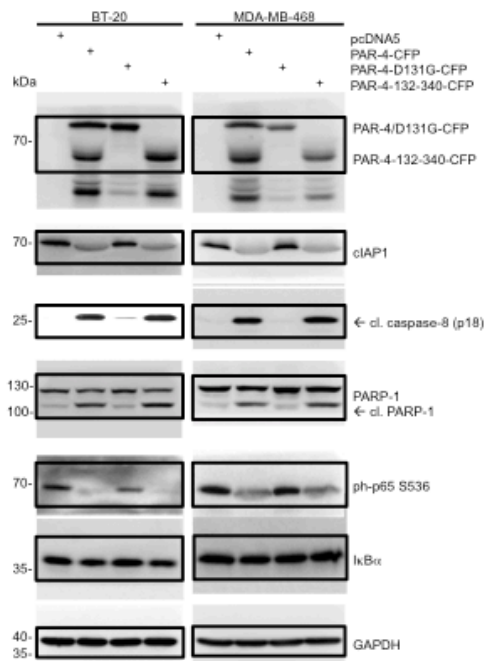
Belong to Figure 4b



Belong to Figure 4d



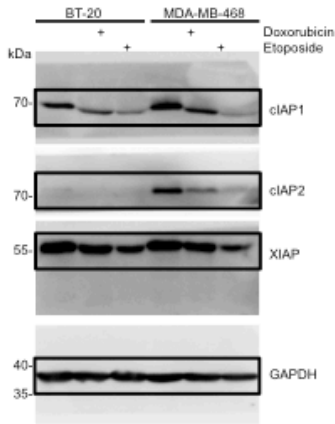
Belong to Figure 4f



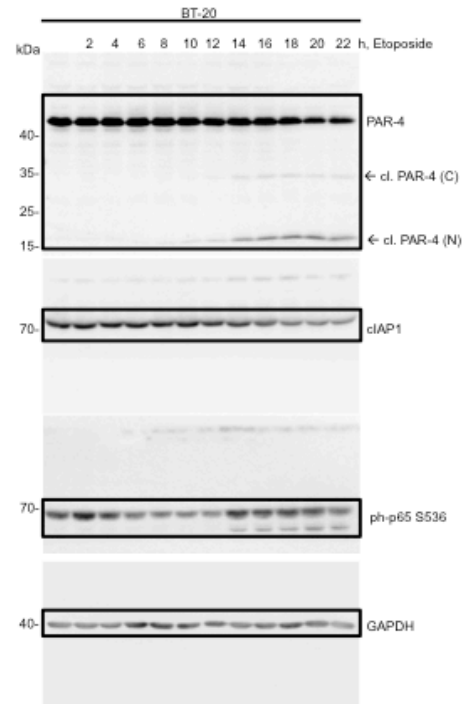
Supplementary Figure S5:

Uncropped original images of Western blots are shown belonging to Figure 4.

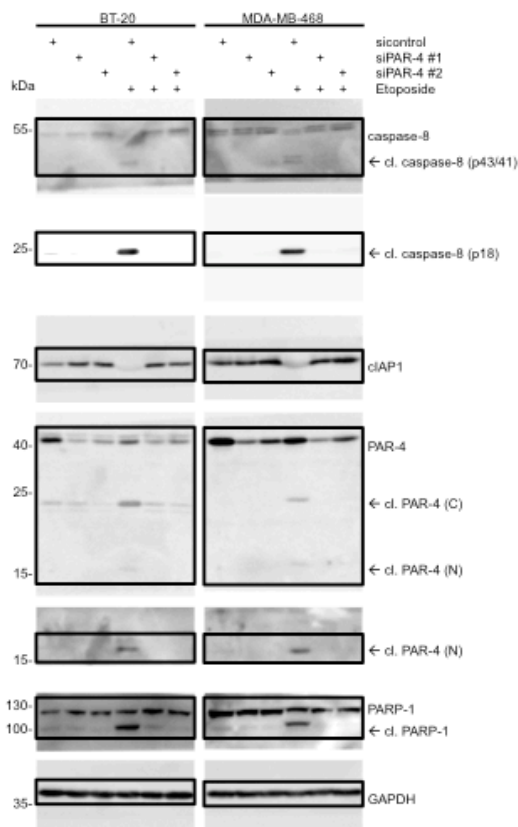
Belong to Figure 5a



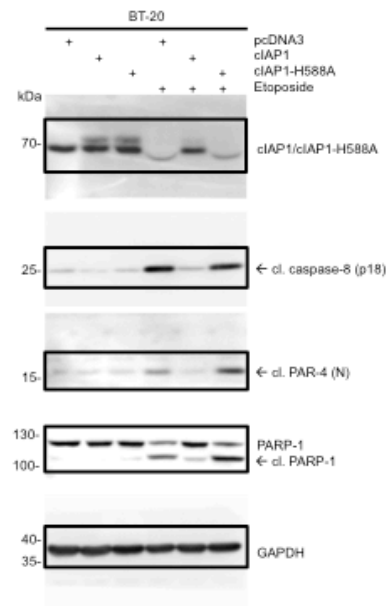
Belong to Figure 5b



Belong to Figure 5c



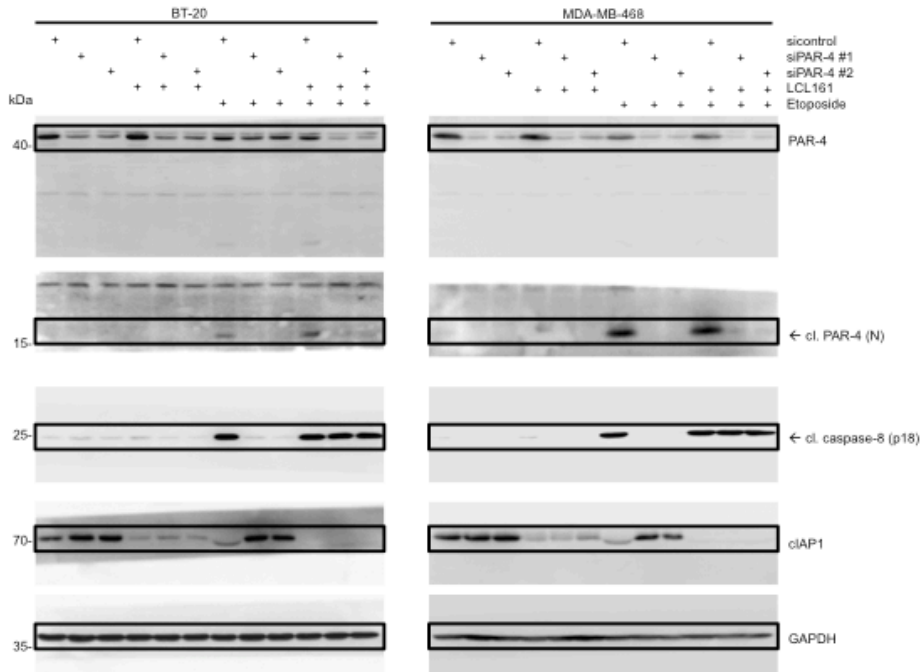
Belong to Figure 5d



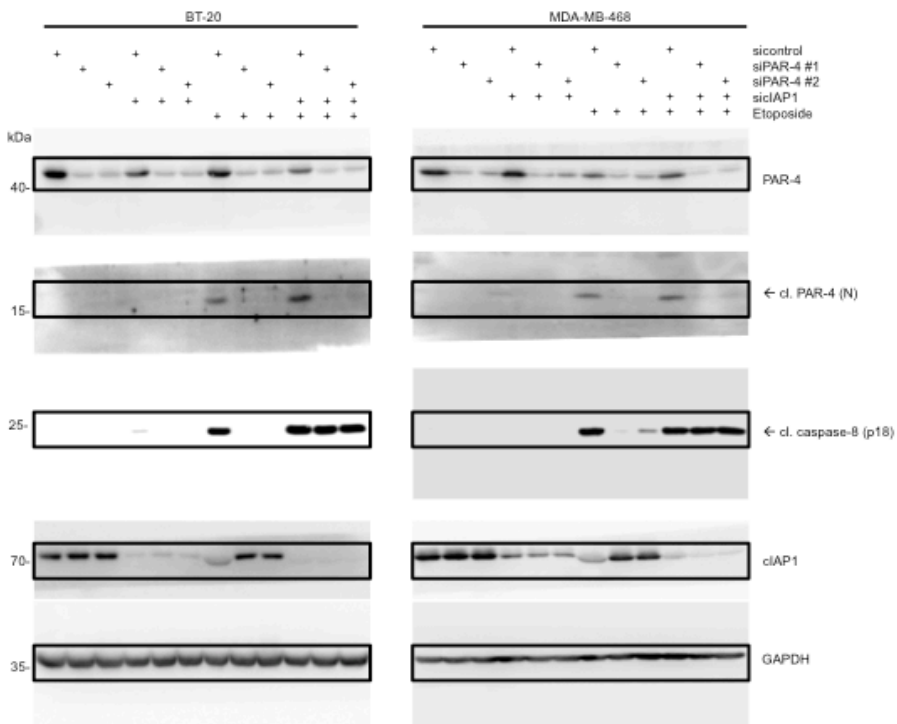
Supplementary Figure S6:

Uncropped original images of Western blots are shown belonging to Figure 5.

Belong to Figure 6a



Belong to Figure 6c



Supplementary Figure S7:

Uncropped original images of Western blots are shown belonging to Figure 6.