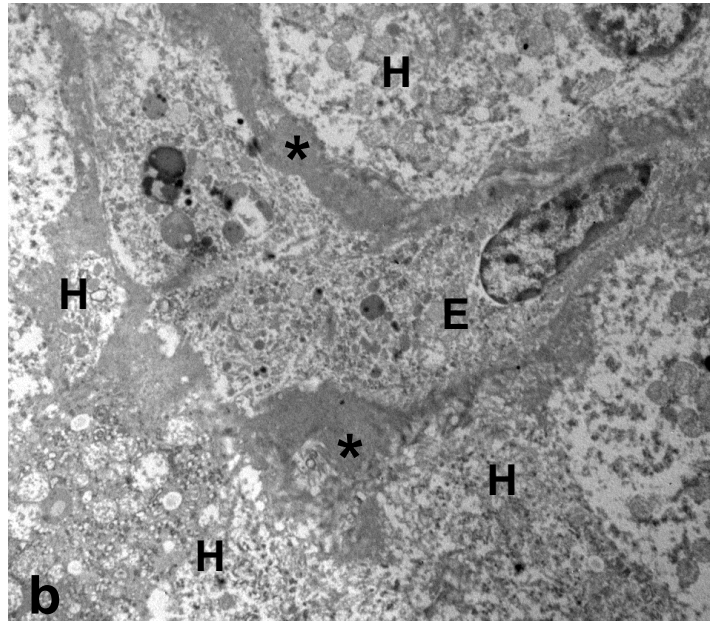
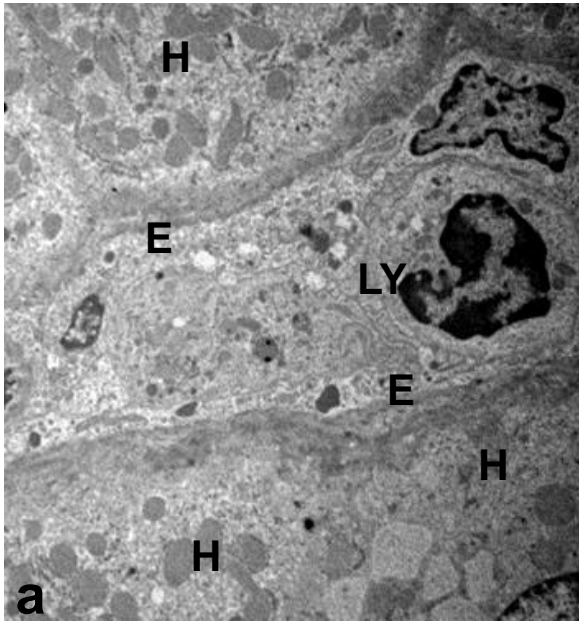


Supplementary Data

“Liver sinusoidal endothelial cells (LSECs) modifications in patients with chronic hepatitis C.”

Andrea Baiocchini, Franca Del Nonno, Chiara Taibi, Ubaldo Visco-Comandini, Gianpiero D'Offizi, Mauro Piacentini, Laura Falasca

Supplementary Figure S1



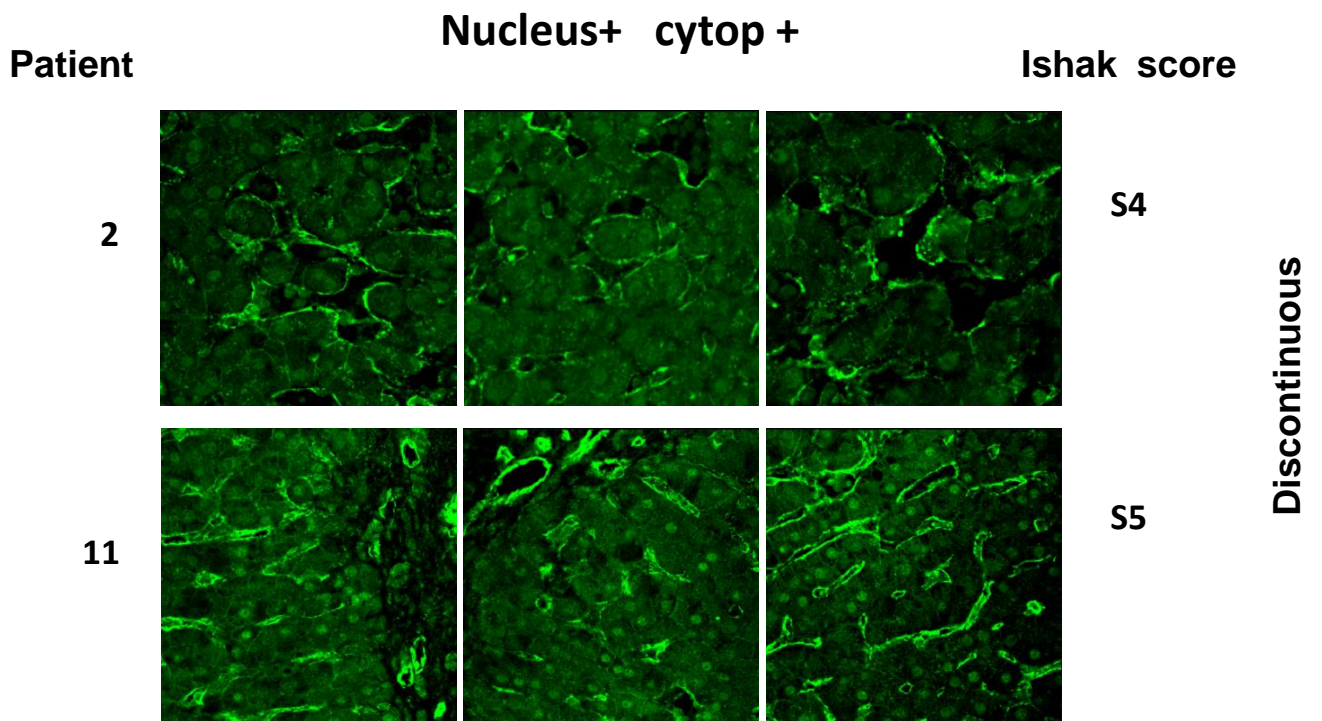
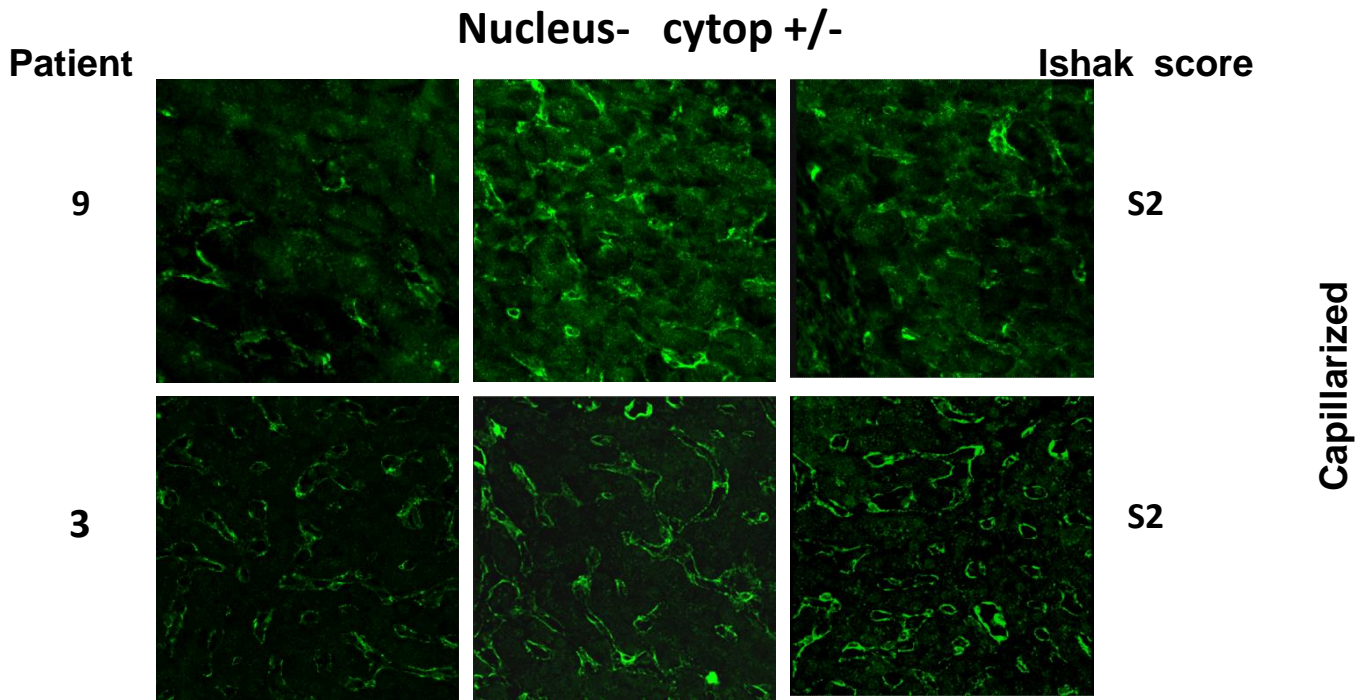
Representative transmission EM images of LSECs capillarization in liver from HCV-negative patients at early (a) and higher (b) stage of fibrosis.

A continuous endothelial cells (E) lining is associated to a basement membrane formation (*).

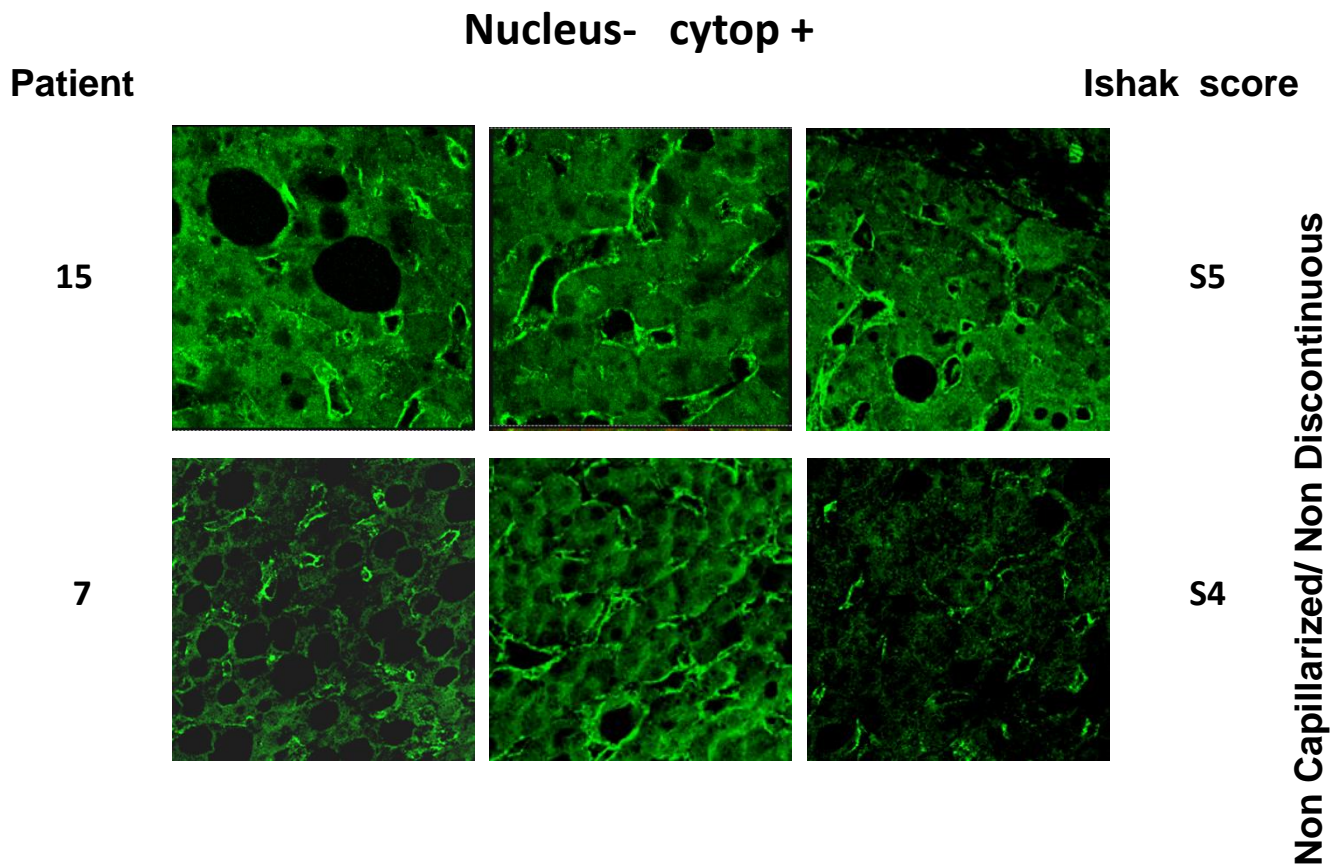
Supplementary Table S1

Pz (n.)	HCV genotype	HCV viral load (IU/mL)	Total cholesterol (mg/dl)	ALT (mg/dl)	AST (mg/dl)	Fibrosis stage	Capillarized LSECs (Yes/No)
1	1	22.9 x 10 ⁵	150	353	262	S4	NO
2	1	46.7 x 10 ⁵	150	75	51	S4	NO
3	1	2.9 x 10 ⁵	178	16	21	S2	YES
4	1	56.9 x 10 ⁵	230	68	43	S6	NO
5	3	41.2 x 10 ⁵	82	183	122	S5	NO
6	1	4.44 x 10 ⁵	111	109	153	S5	NO
7	1	3.01 x 10 ⁵	142	39	33	S4	NO
8	1	1.2 x 10 ⁵	210	44	32	S2	NO
9	1	1.4 x 10 ⁵	119	35	31	S2	YES
10	1	0.6 x 10 ⁵	182	52	42	S2	YES
11	1	4.96 x 10 ⁵	210	104	95	S5	NO
12	3	0.2 x 10 ⁵	124	50	46	S4	NO
13	1	3.4 x 10 ⁵	168	43	52	S4	NO
14	1	1.3 x 10 ⁵	150	103	81	S5	NO
15	1	33.9 x 10 ⁵	181	65	102	S5	NO
16	1	2.2 x 10 ⁵	166	25	33	S2	YES
17	4	12.2 x 10 ⁵	172	36	41	S6	NO
18	1	15.4 x 10 ⁵	152	65	53	S5	NO
19	3	0.7 x 10 ⁵	164	84	143	S4	NO
20	3	33 x 10 ⁵	134	34	26	S3	NO
21	1	44.7 x 10 ⁵	147	37	48	S3	NO
22	1	73.1 x 10 ⁵	203	46	40	S2	NO
23	4	2.1 x 10 ⁵	171	94	74	S4	NO
24	1	15.4 x 10 ⁵	158	121	124	S6	NO

Supplementary Figure S2



Supplementary Figure S2



Confocal fuorescence microscopy images showing different pattern of Cav-1 distribution

Two patients for each staining pattern condition and 3 different areas from same patient are shown. Fibrosis score (according to Ishak grading) and LSECs changes are indicated on the left.

