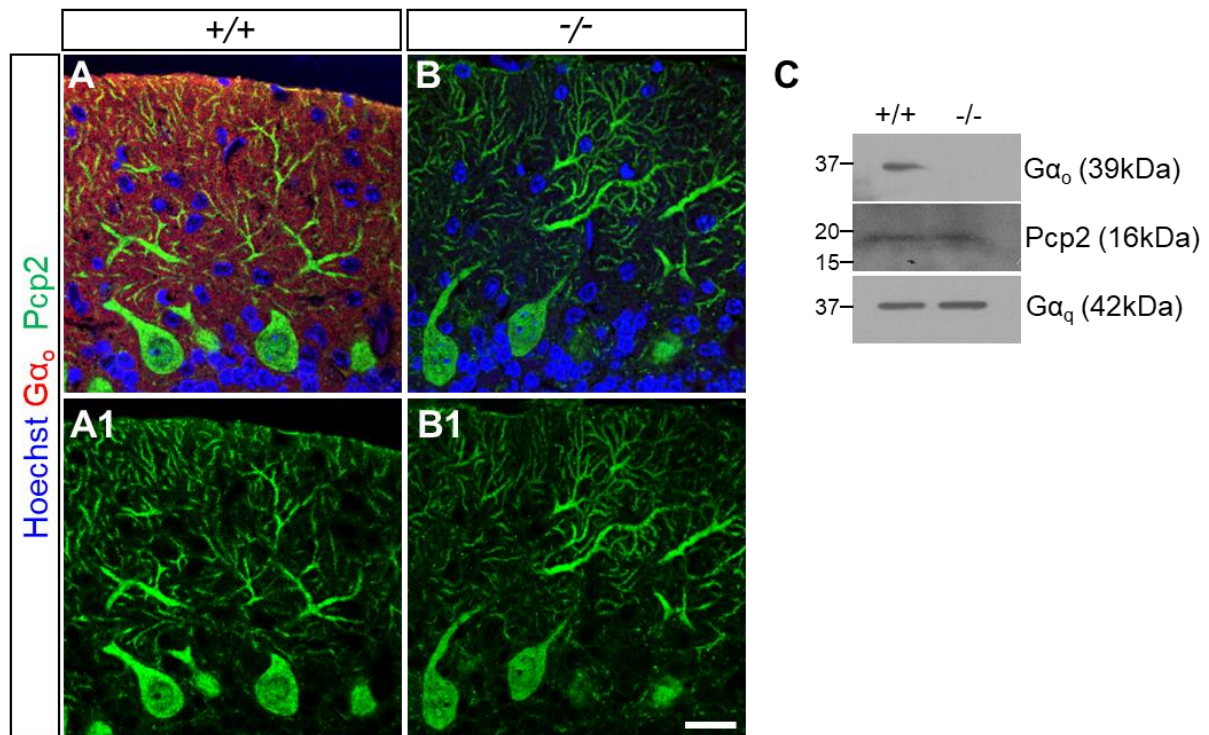


Additional file 3



Additional file 3. Expression of Pcp2 in the cerebellum of *Gnao*^{-/-} mice. (a-b) Immunohistochemistry indicate the loss of Gα_o in *Gnao*^{-/-} mice in b. In the same mice, Pcp2-positive signals in PCL and ML were not altered compared to the wild type littermates (compare a1 and b1). Scale bar, 20 μm. (c) Western blot analysis shows no changes of Pcp2 and Gα_q in cerebellum of *Gnao*^{-/-} mice compared to the wild type littermates.