

SUPPLEMENTAL MATERIAL

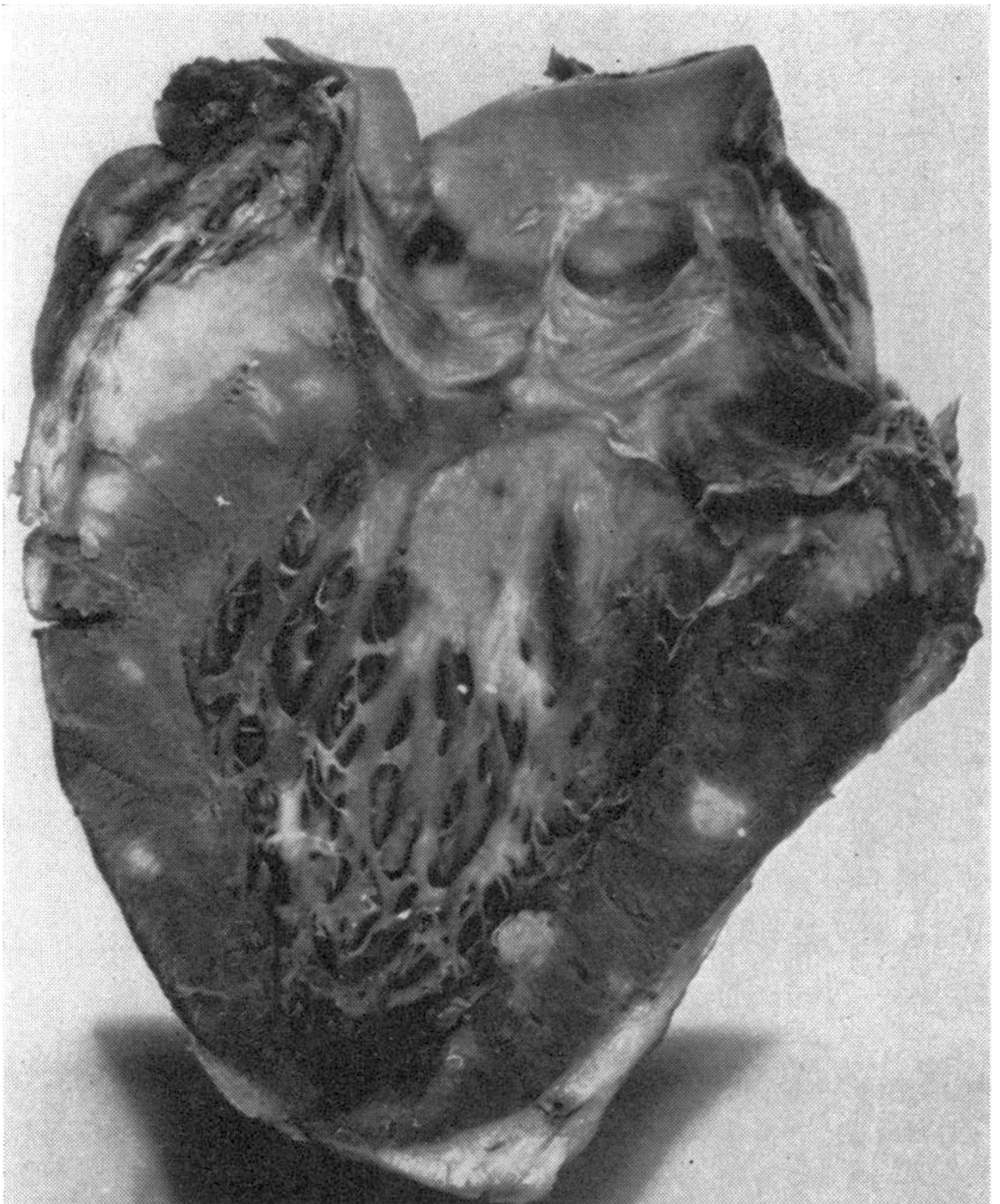


Figure S1. See Table 2 for interpretation of cardiac involvement. Reprinted from Fawcett et al¹ with permission. Copyright ©1974, BMJ Publishing Group LTD.



Figure S2. See Table 2 for interpretation of cardiac involvement. Reprinted from Fleming et al² with permission. Copyright ©1974, BMJ Publishing Group Ltd.

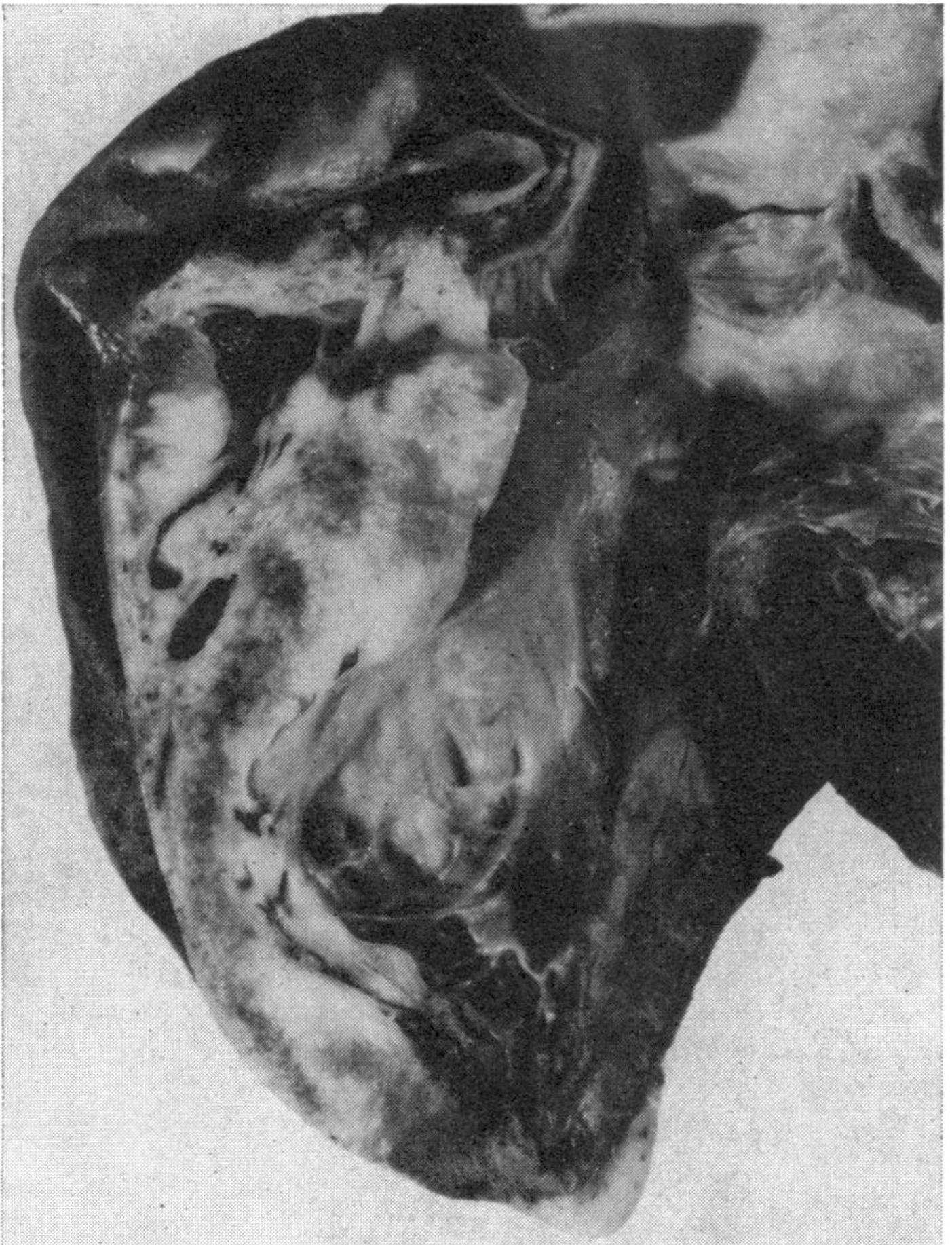


Figure S3. See Table 2 for interpretation of cardiac involvement. Reprinted from Fleming et al² with permission. Copyright ©1974, BMJ Publishing Group Ltd.

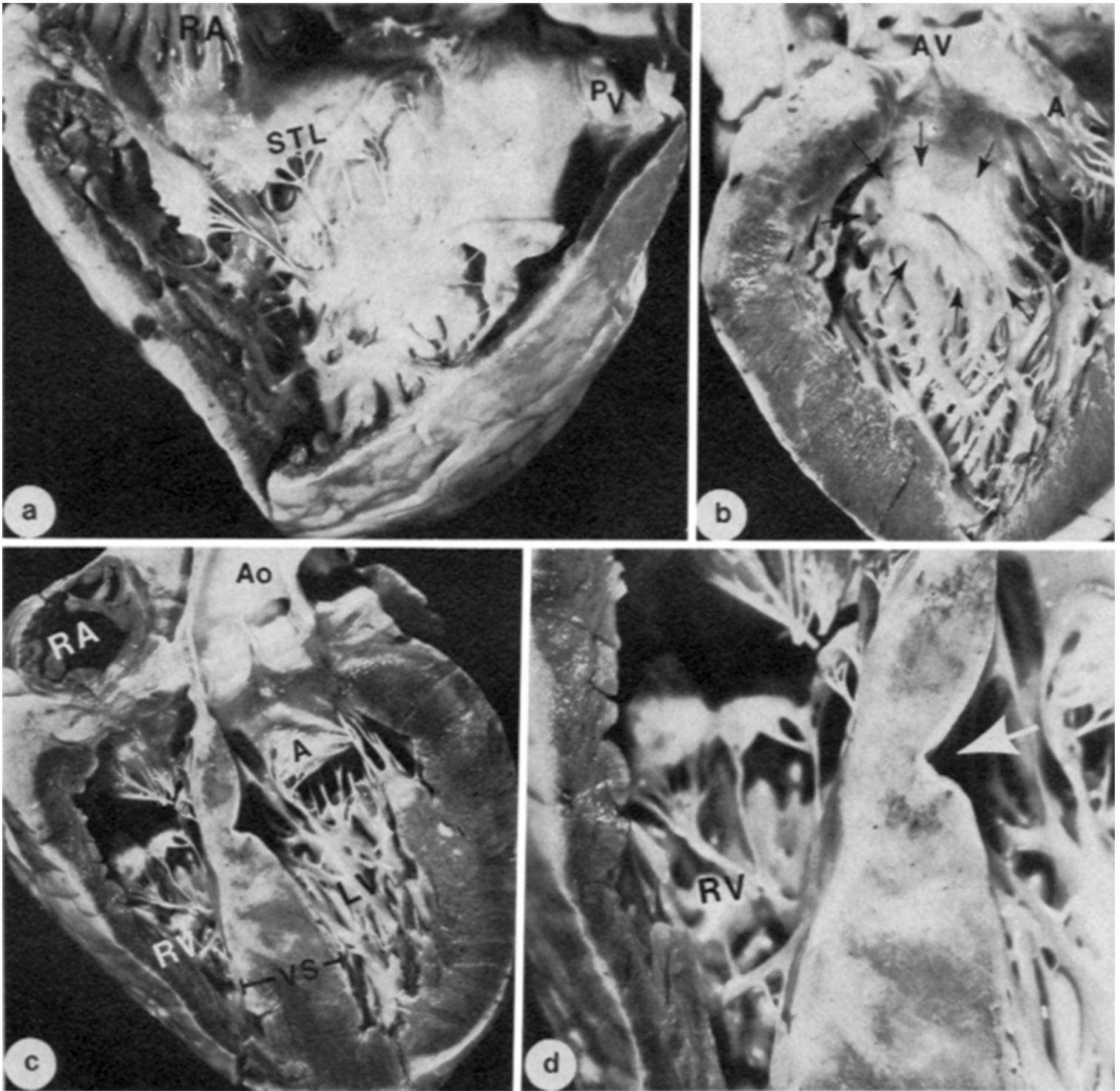


Figure S4. See Table 2 for interpretation of cardiac involvement. Reprinted from Roberts et al³ with permission. Copyright ©1977, Elsevier.

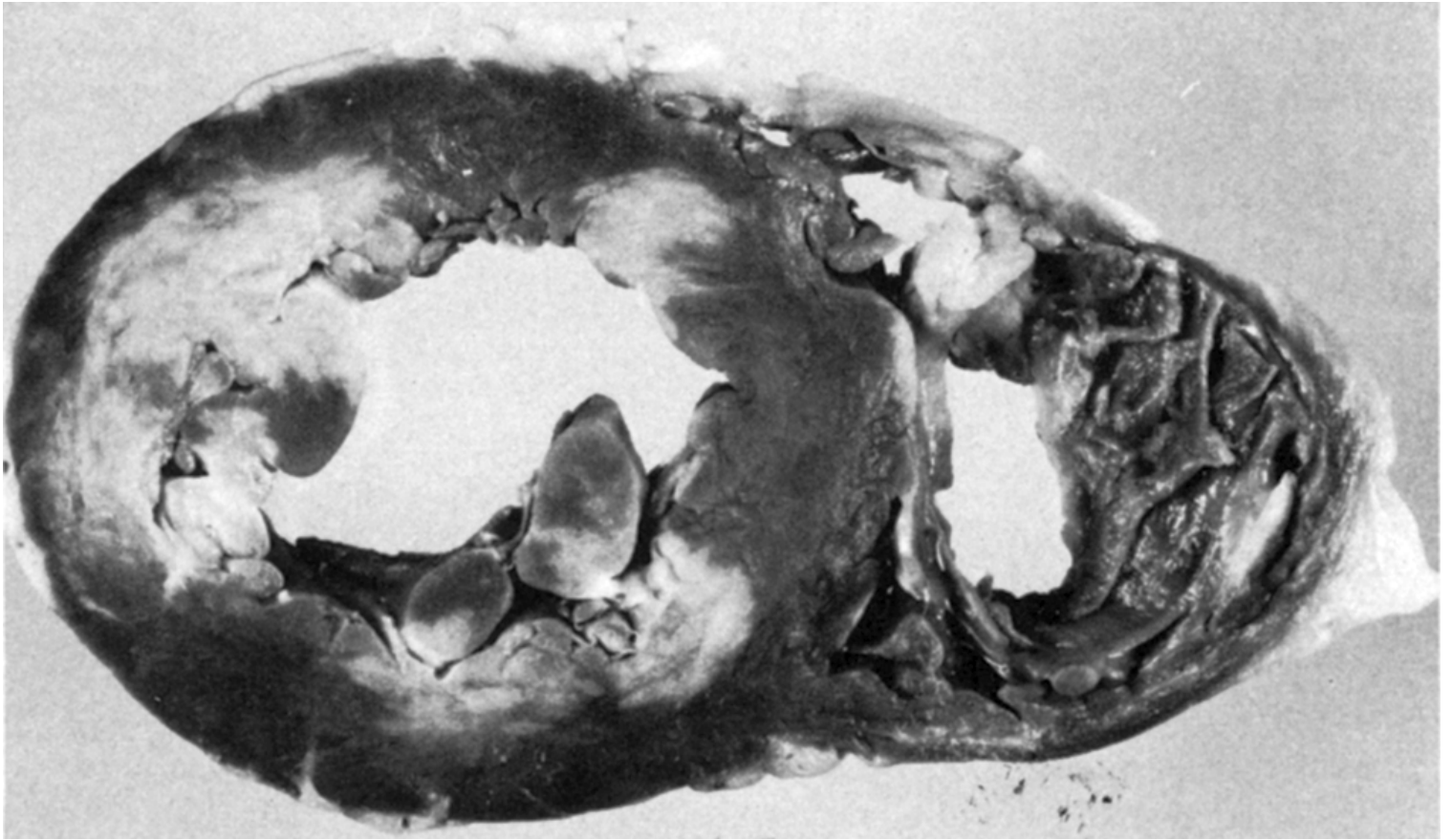


Figure S5. See Table 2 for interpretation of cardiac involvement. Reprinted with permission from James et al⁴ with permission. Copyright ©1982, Elsevier.

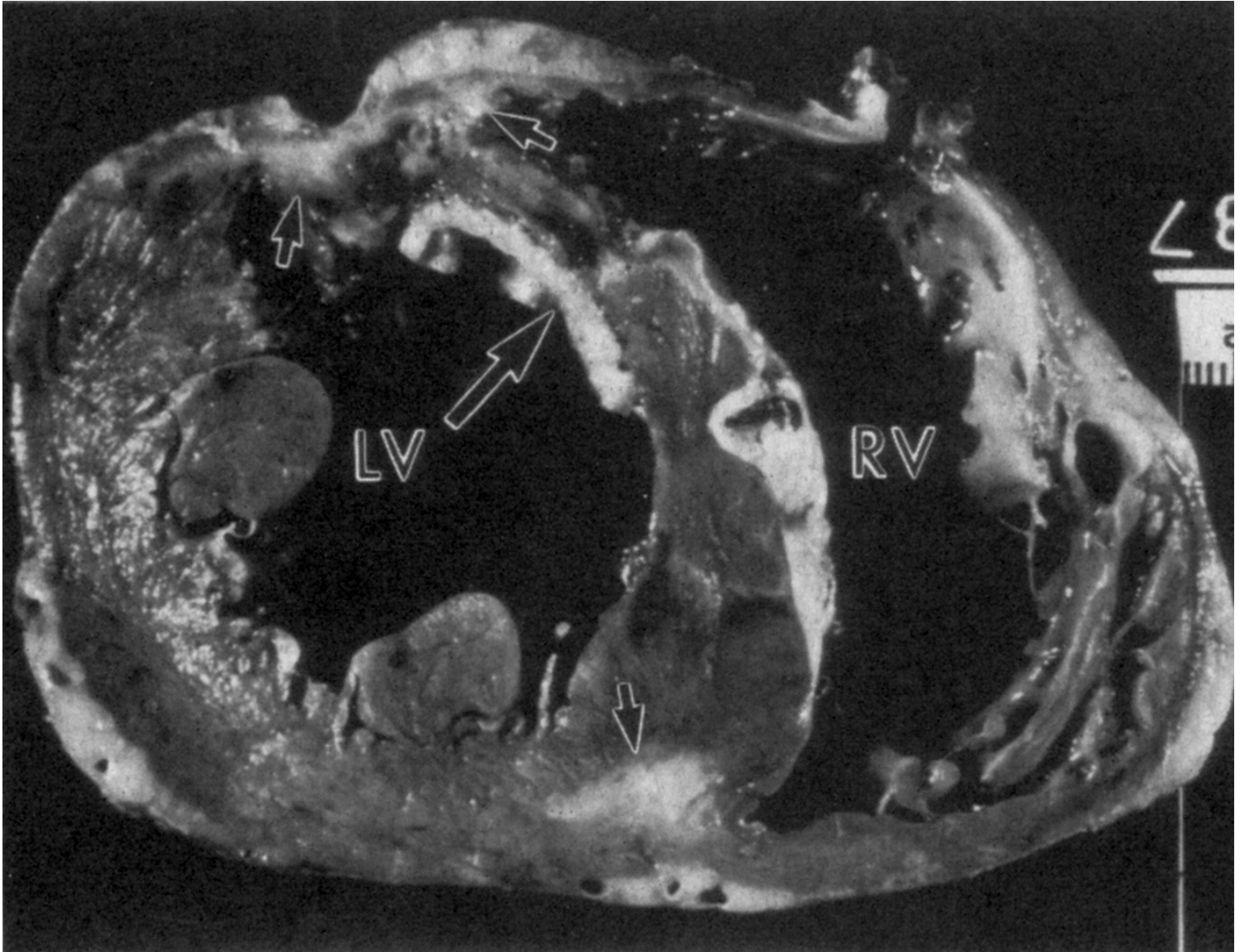


Figure S6. See Table 2 for interpretation of cardiac involvement. Reprinted from [authors not listed]⁵ with permission. Copyright ©1990, Elsevier.

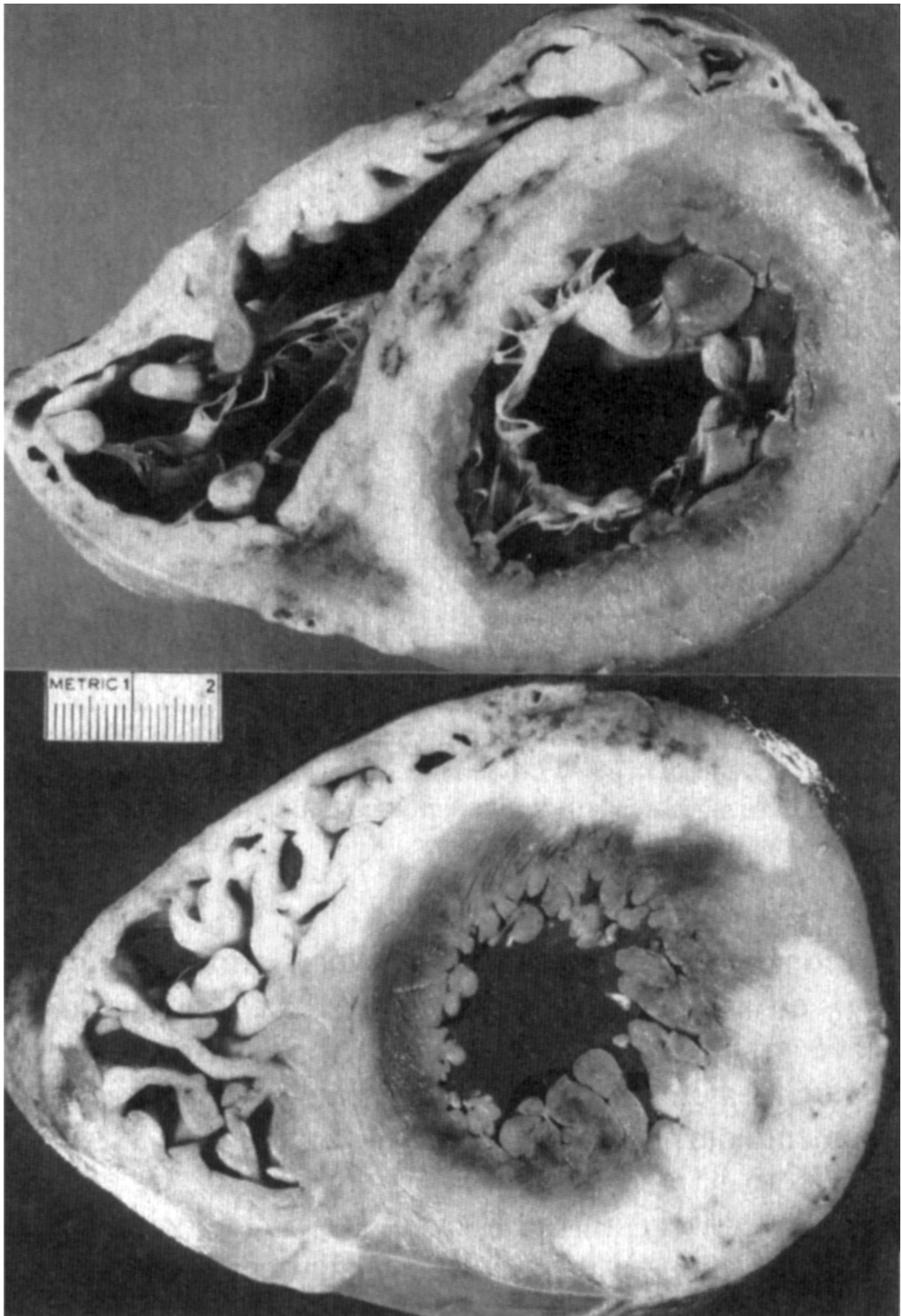


Figure S7. See Table 2 for interpretation of cardiac involvement. Reprinted from Antecol et al.⁶ with permission. Copyright ©1990, Elsevier.

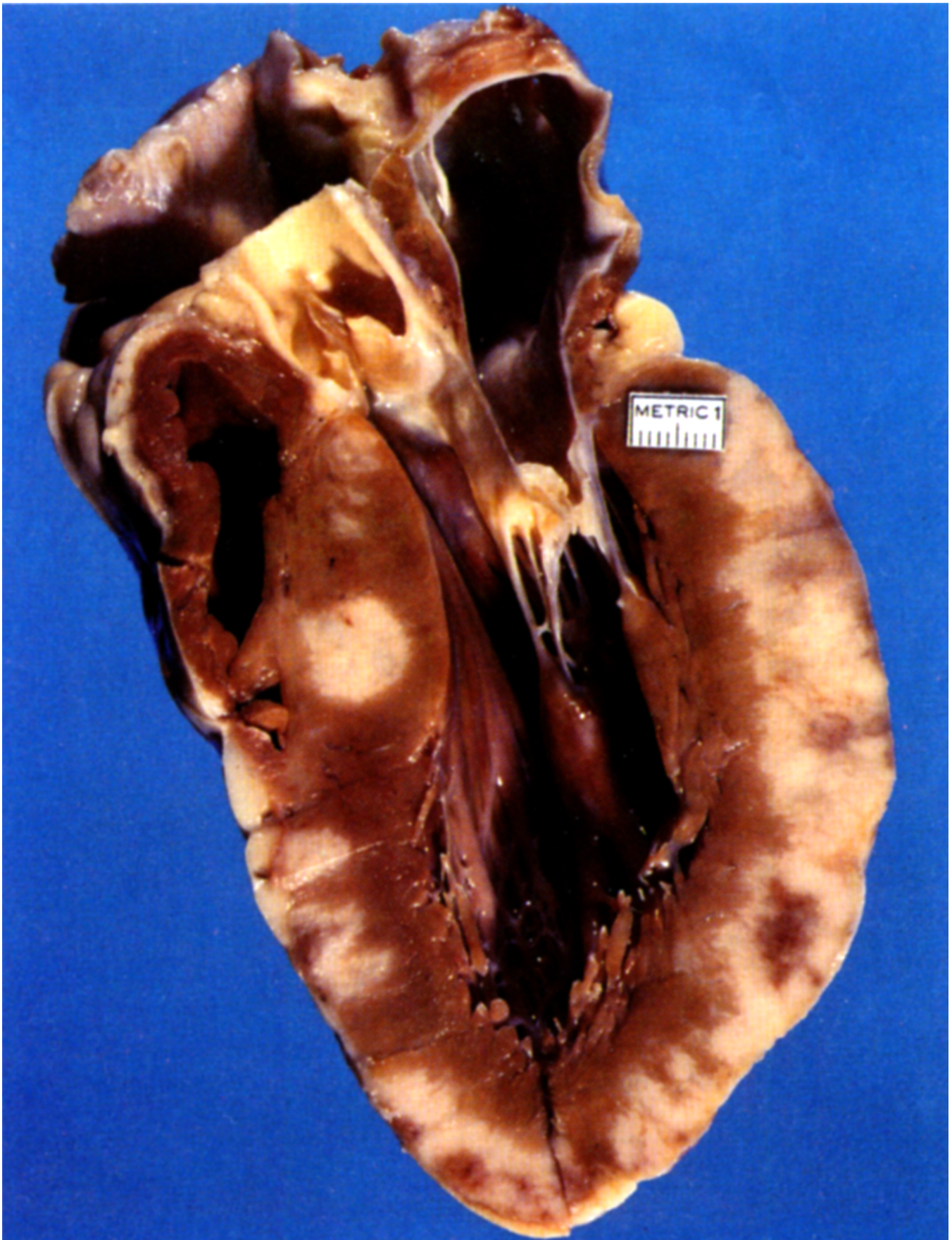


Figure S8. See Table 2 for interpretation of cardiac involvement. Reprinted from Shirani et al⁷ with permission. Copyright ©1993, Elsevier.

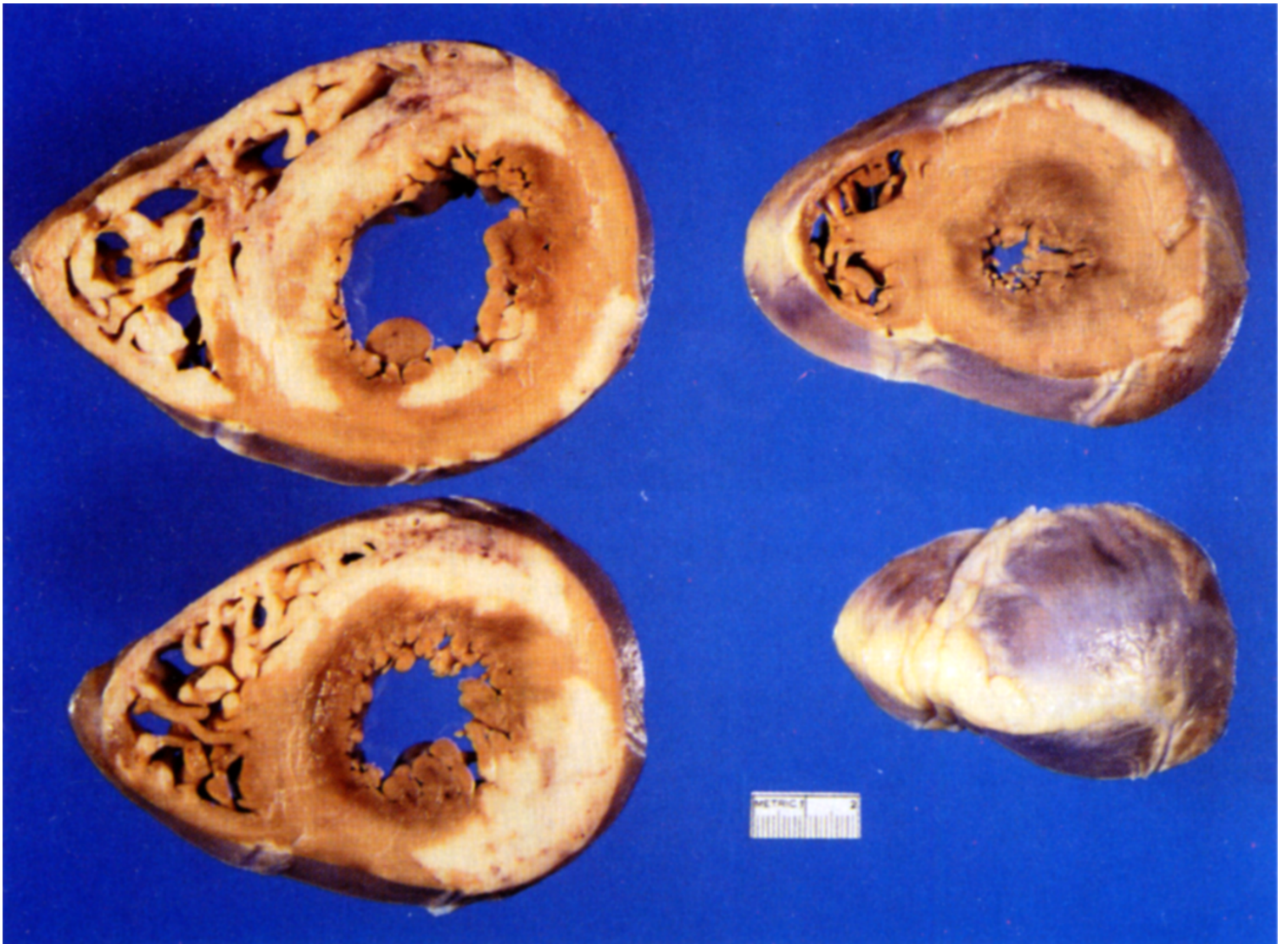


Figure S9. See Table 2 for interpretation of cardiac involvement. Reprinted from Shirani et al⁷ with permission. Copyright ©1993, Elsevier.

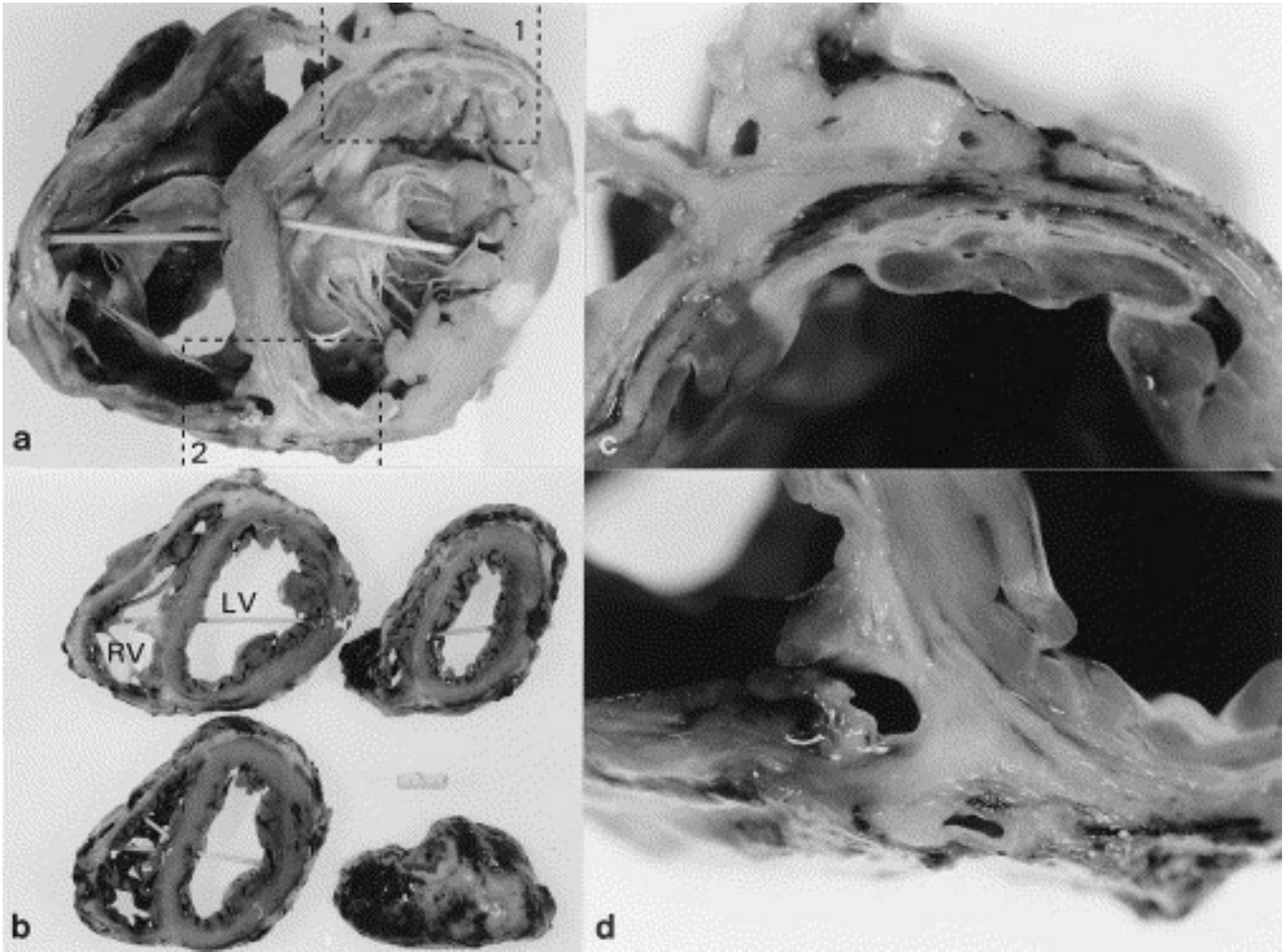


Figure S10. See Table 2 for interpretation of cardiac involvement. Reprinted from Donsky et al⁸ with permission. Copyright ©2008, Elsevier.



Figure S11. See Table 2 for interpretation of cardiac involvement. Reprinted from Wan Muhaizan et al⁹ with permission. Copyright ©2004, Malaysian Society of Pathologists.

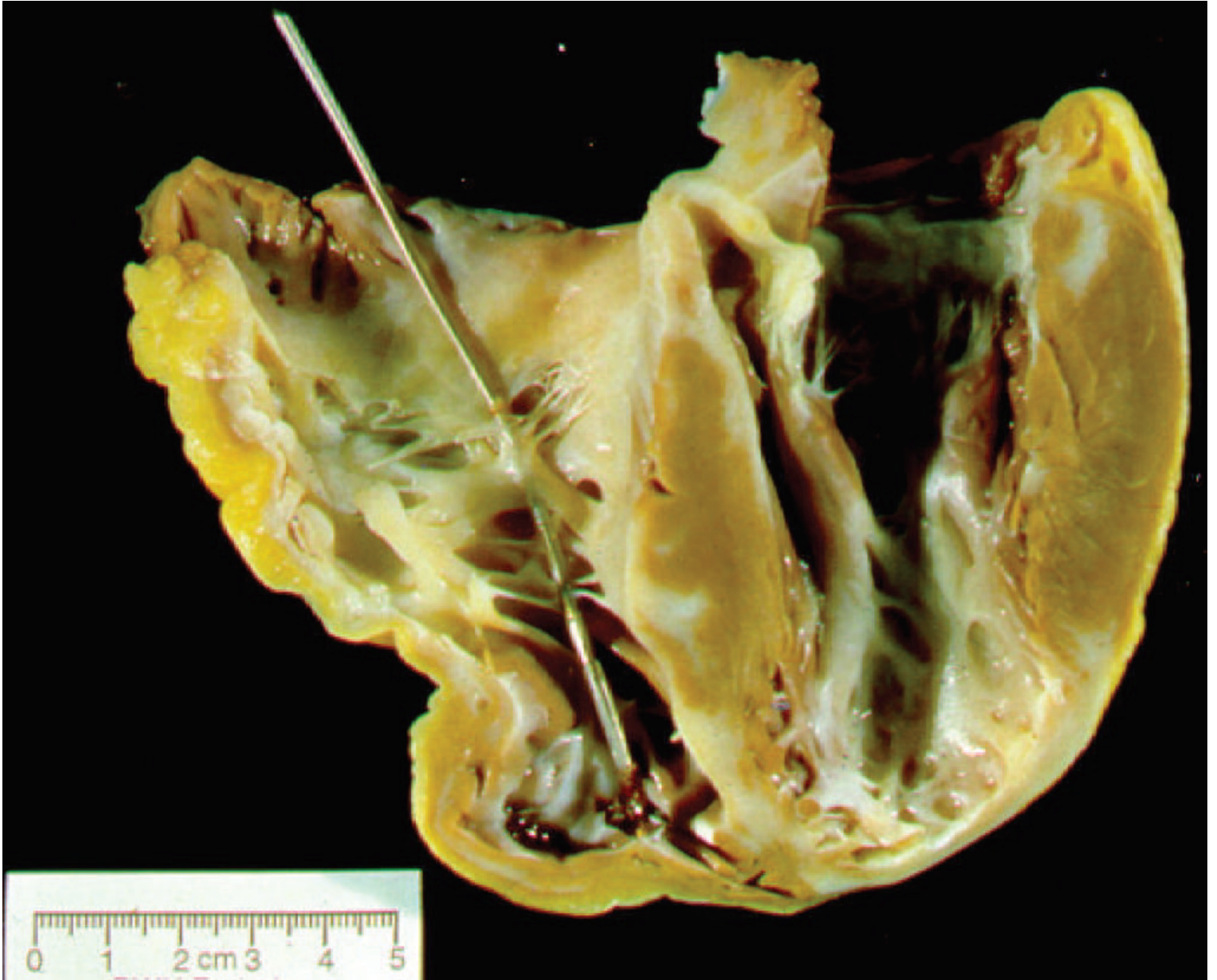


Figure S12. See Table 2 for interpretation of cardiac involvement. Reprinted from Goyal et al¹⁰ with permission. Copyright ©2006, Wolters Kluwer Health, Inc.

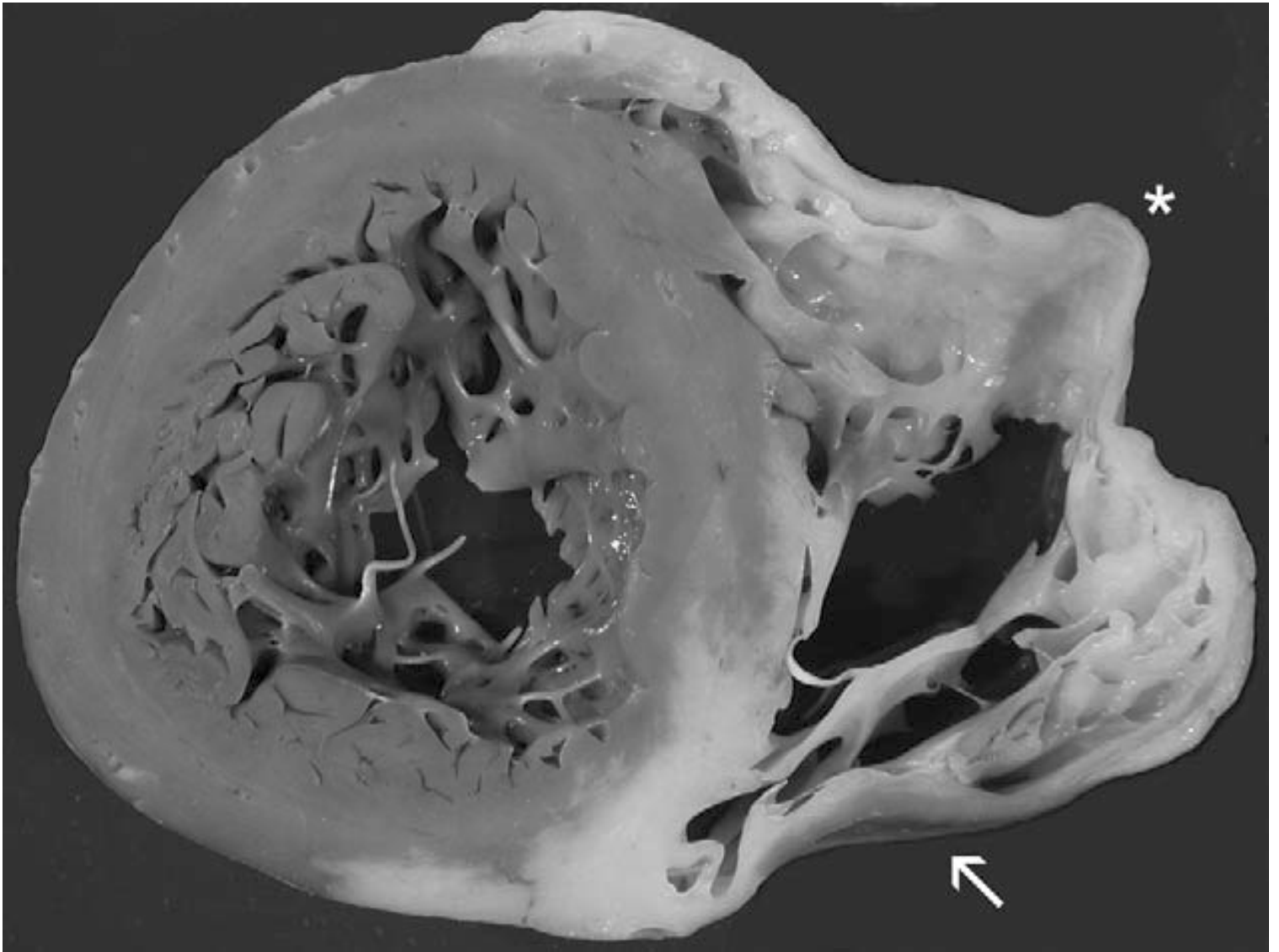


Figure S13. See Table 2 for interpretation of cardiac involvement. Reprinted from Halushka et al¹¹ with permission. Copyright ©2006, Elsevier.

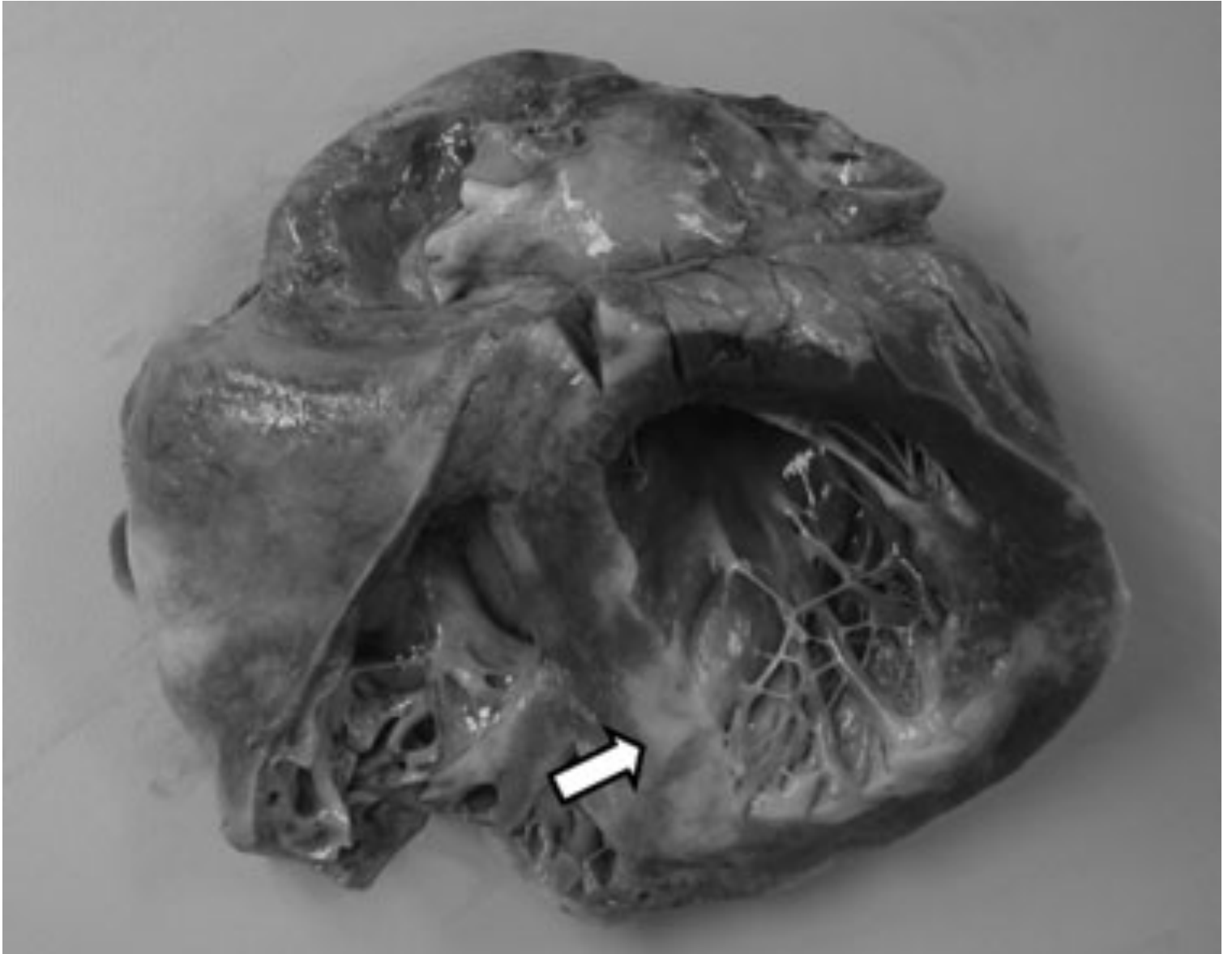


Figure S14. See Table 2 for interpretation of cardiac involvement. Reprinted from Hamilton et al¹² with permission. Copyright ©2007, John Wiley and Sons.

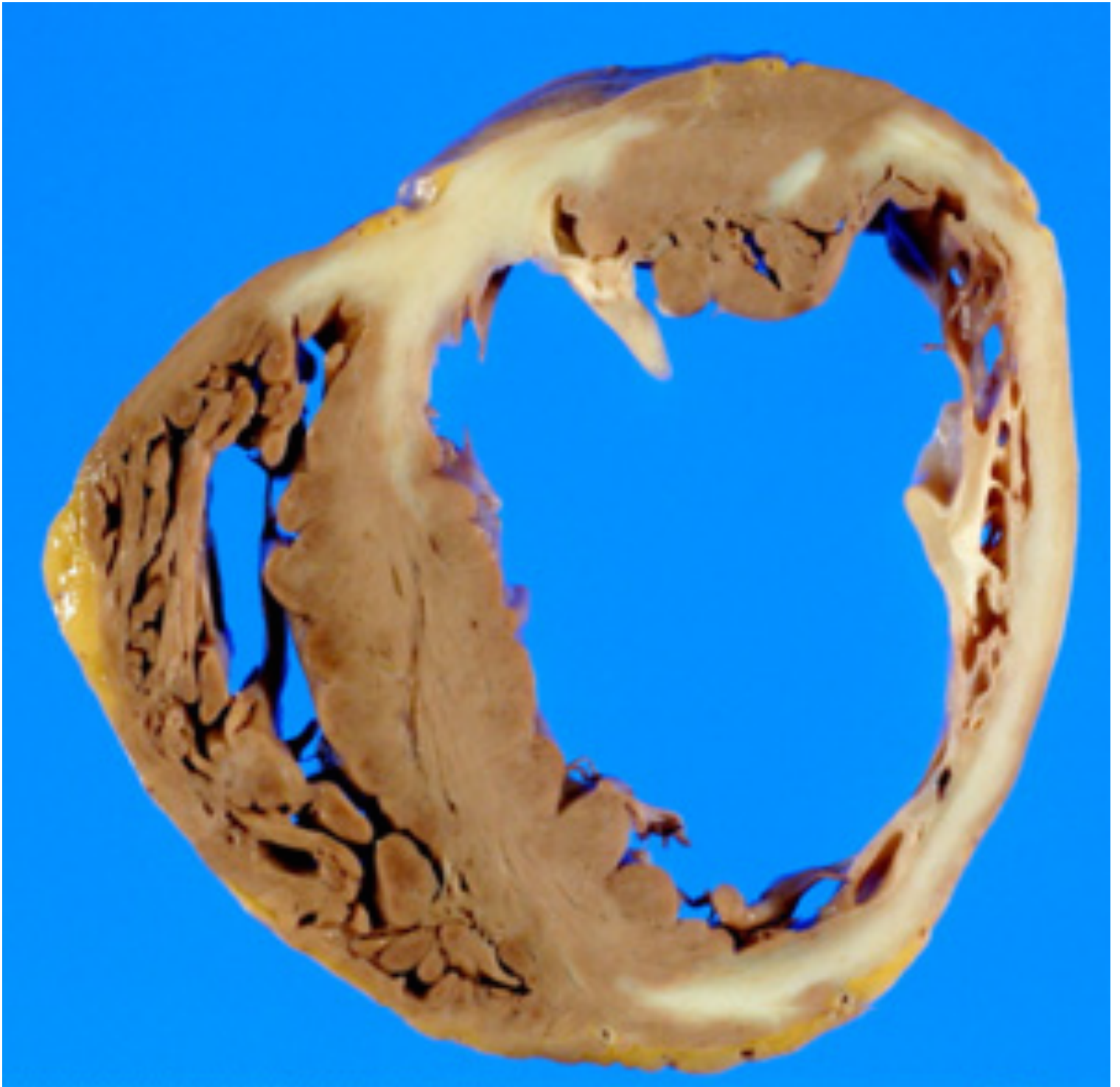


Figure S15. See Table 2 for interpretation of cardiac involvement. Reprinted from Morikawa et al¹³ with permission. Copyright ©2008, Elsevier.

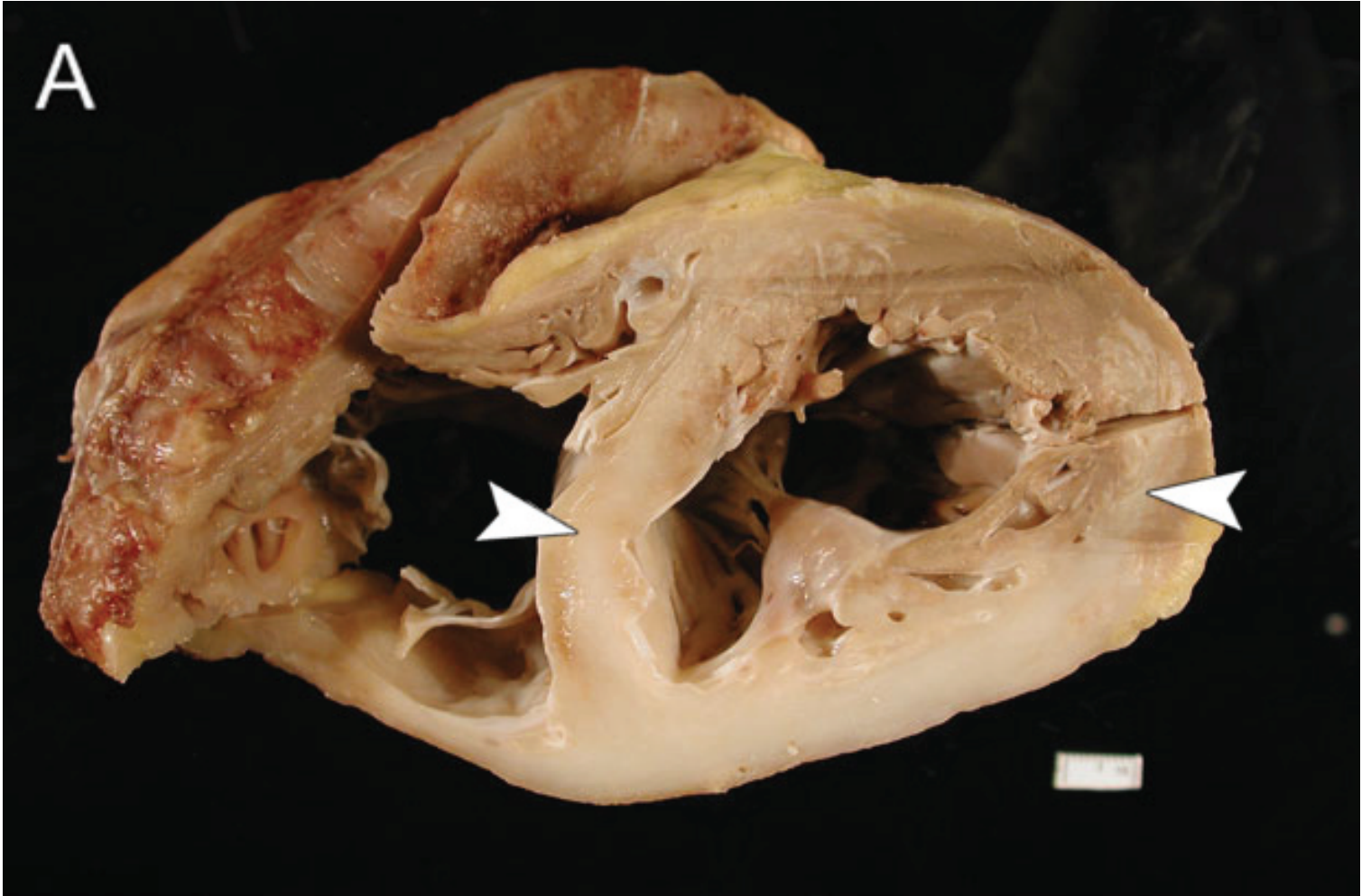


Figure S16. See Table 2 for interpretation of cardiac involvement. Reprinted from Luk et al¹⁴ with permission. Copyright ©2009, Elsevier.

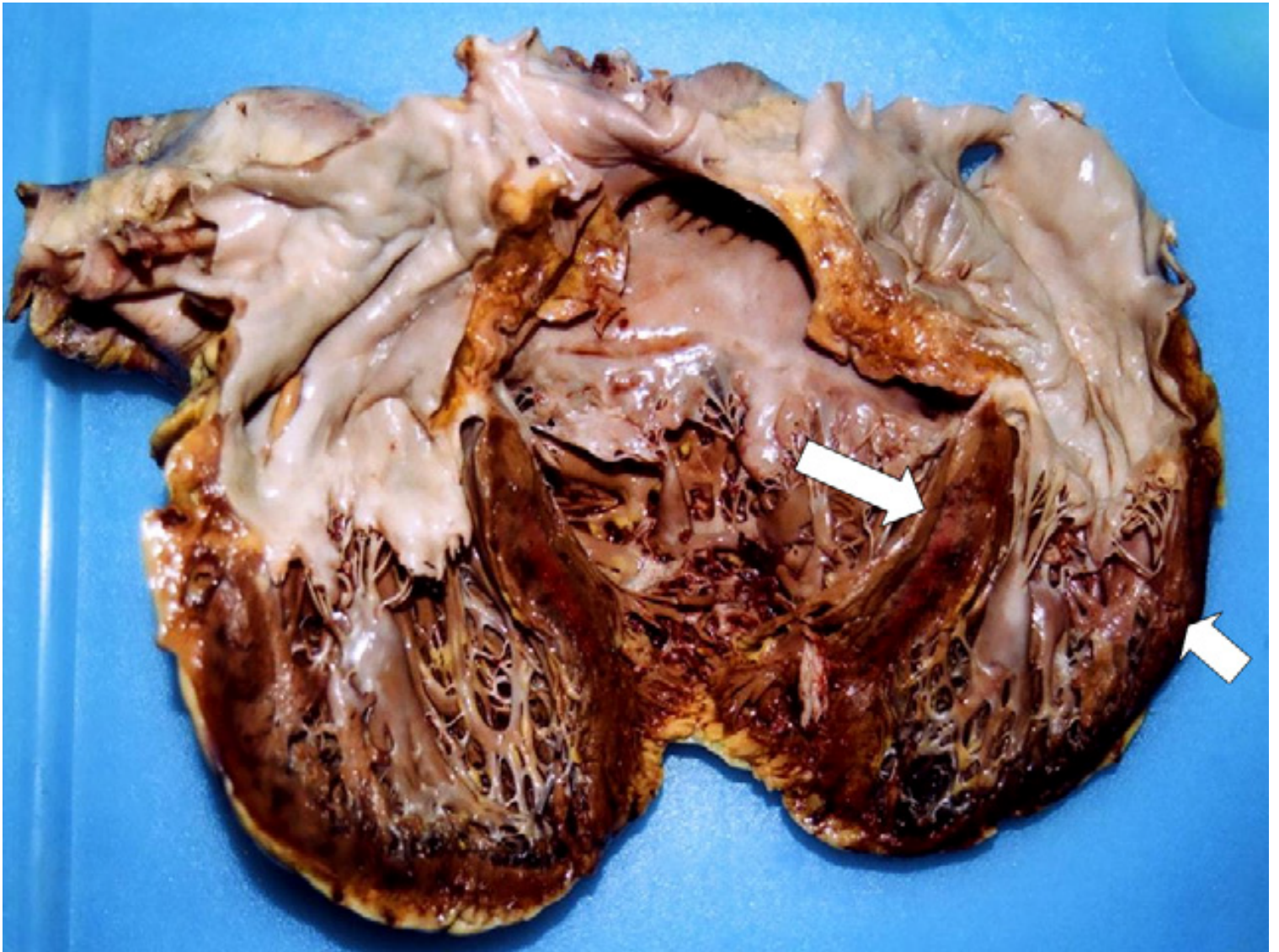


Figure S17. See Table 2 for interpretation of cardiac involvement. Reprinted from Riezzo et al¹⁵ with permission. Copyright ©2009, Elsevier.

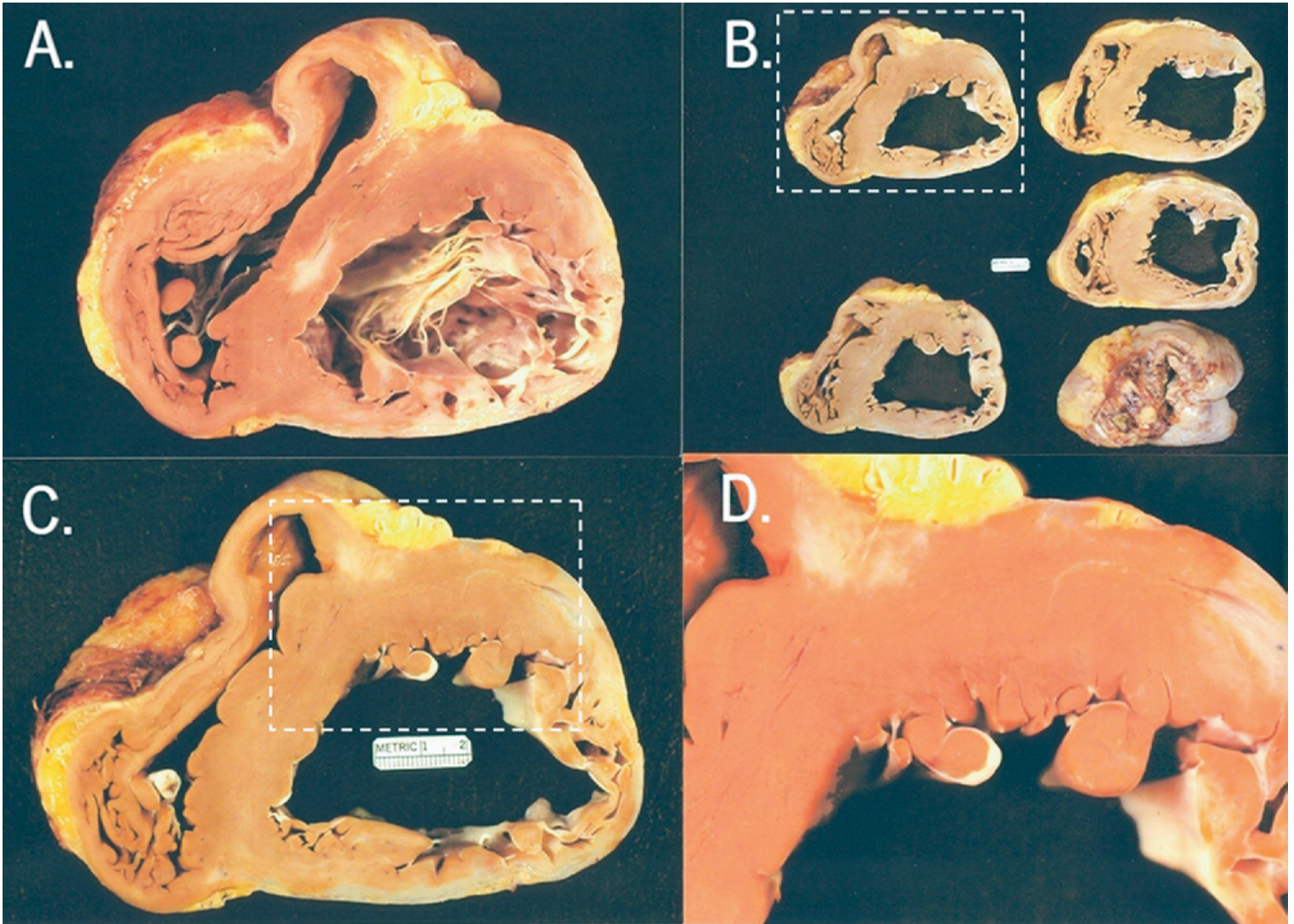


Figure S18. See Table 2 for interpretation of cardiac involvement. Reprinted from Roberts et al¹⁶ with permission. Copyright ©2009, Elsevier.

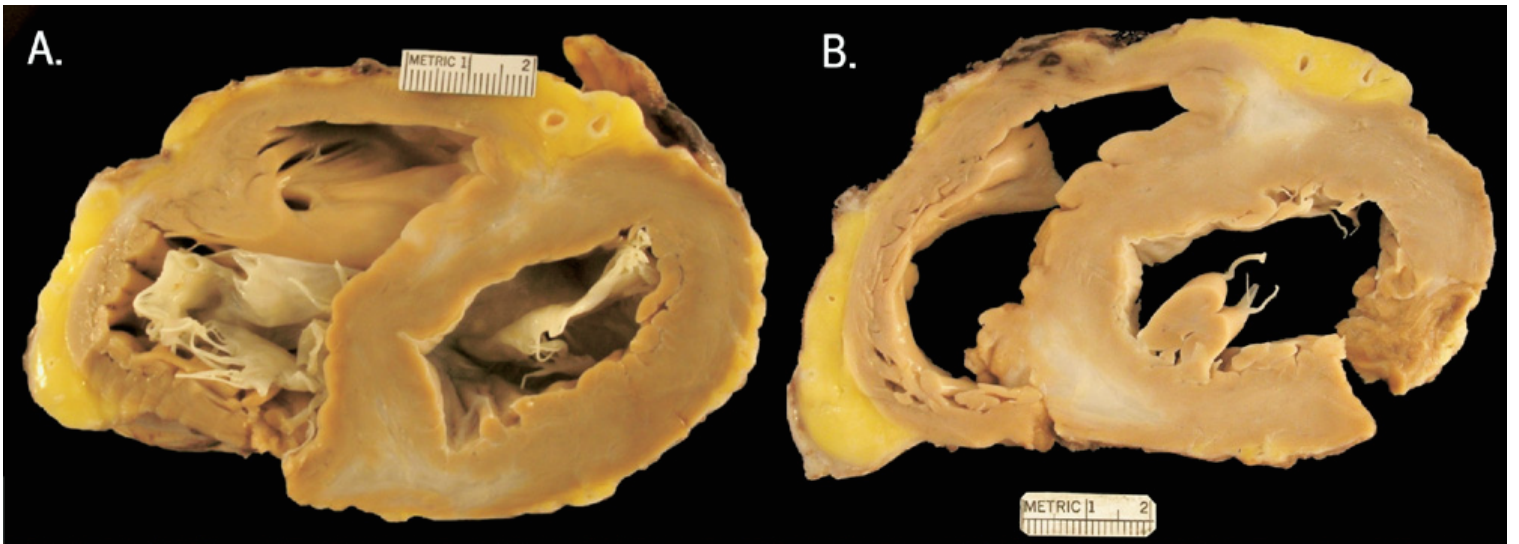


Figure S19. See Table 2 for interpretation of cardiac involvement. Reprinted from Roberts et al16 with permission. Copyright ©2009, Elsevier.

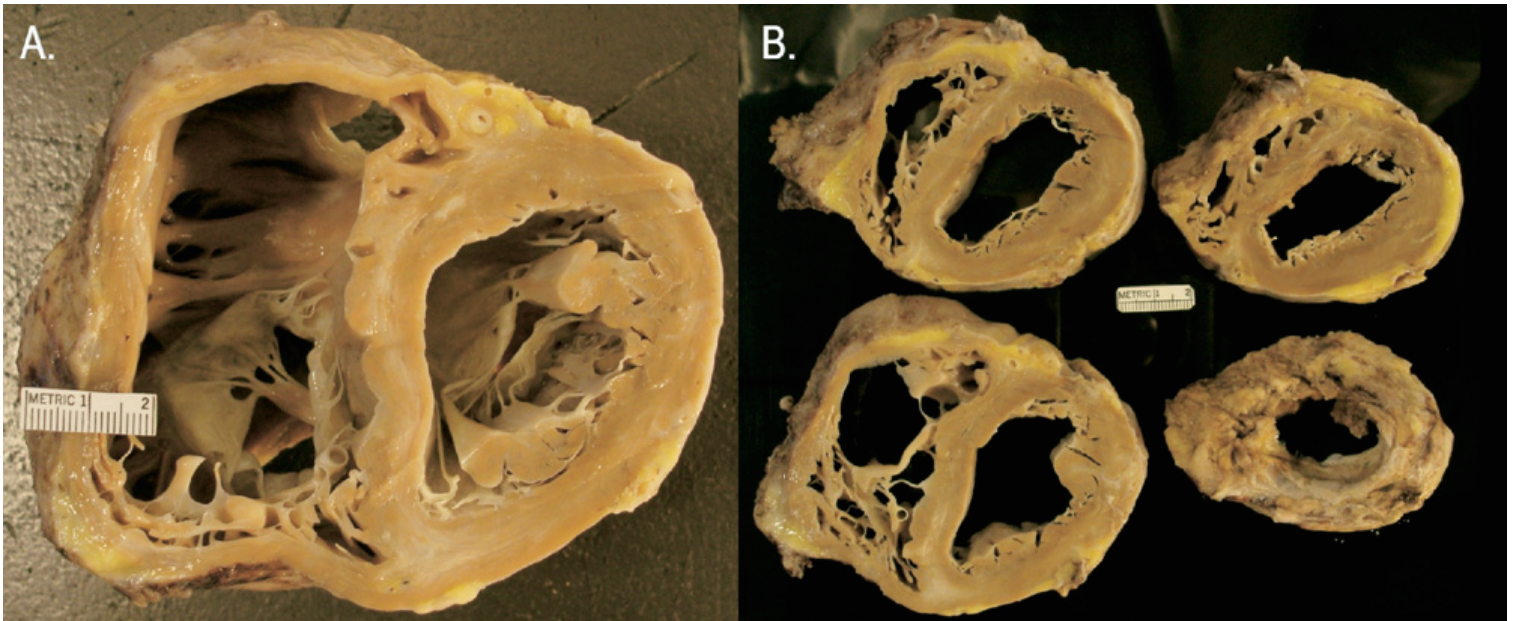


Figure S20. See Table 2 for interpretation of cardiac involvement. Reprinted from Roberts et al16 with permission. Copyright ©2009, Elsevier.



Figure S21. See Table 2 for interpretation of cardiac involvement. Reprinted from Sharma et al¹⁷ with permission. Copyright ©2009, Taylor & Francis.



Figure S22. See Table 2 for interpretation of cardiac involvement. Reprinted from Tavora et al¹⁸ with permission. Copyright ©2009, Elsevier.

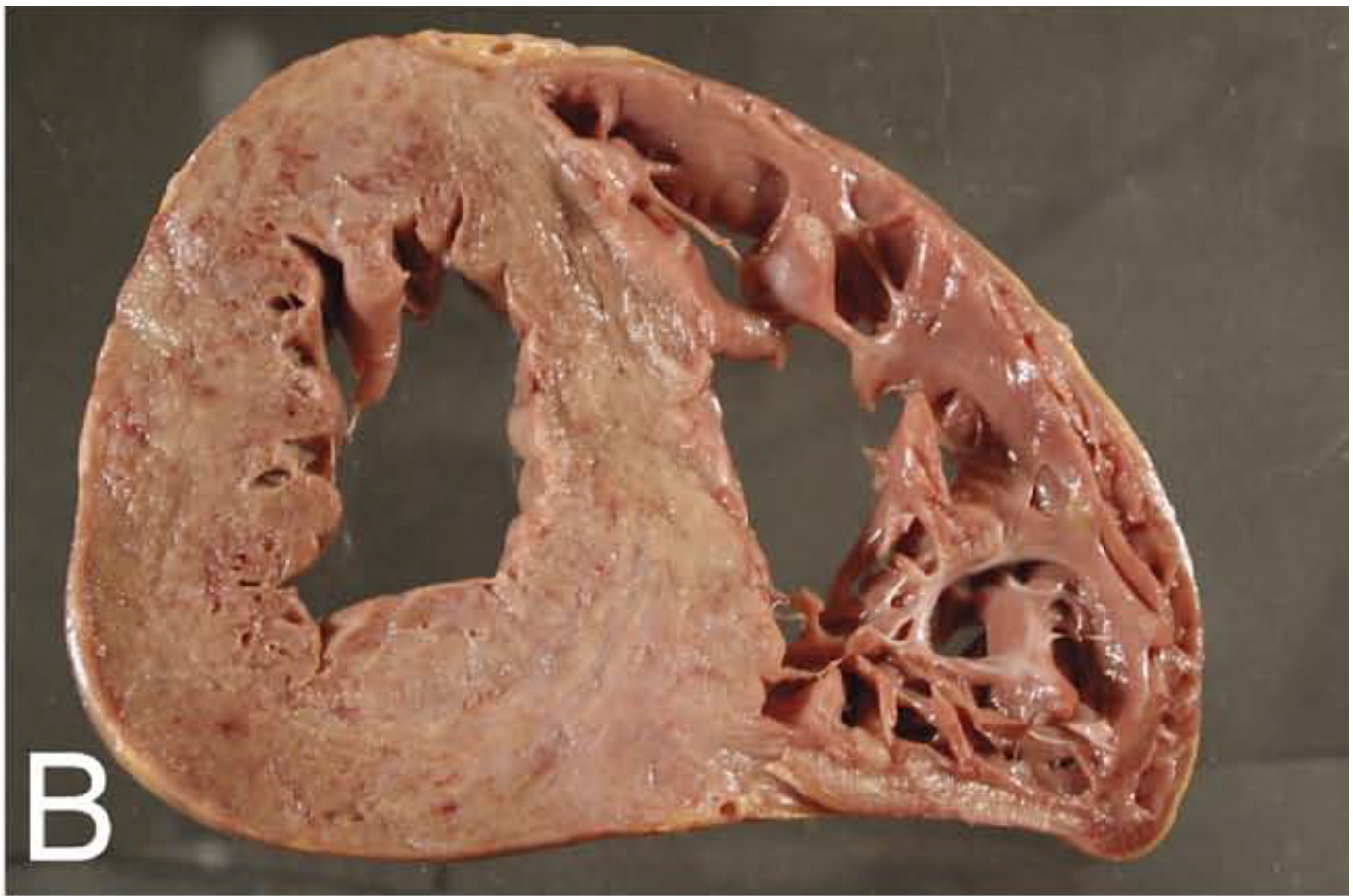


Figure S23. See Table 2 for interpretation of cardiac involvement. Reprinted from Tavora et al18 with permission. Copyright ©2009, Elsevier.

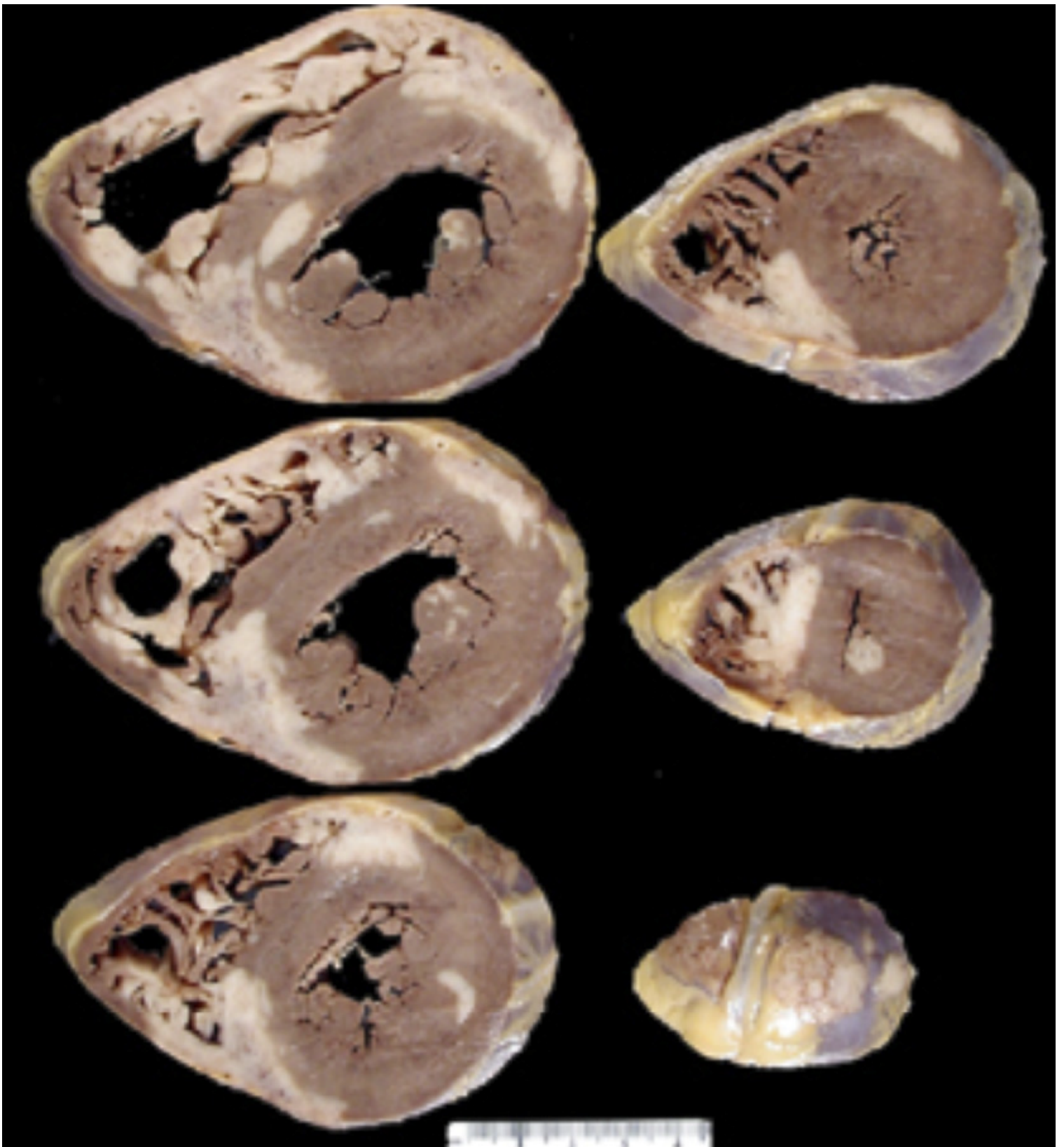


Figure S24. See Table 2 for interpretation of cardiac involvement. Reprinted from Tavora et al¹⁸ with permission. Copyright ©2009, Elsevier.

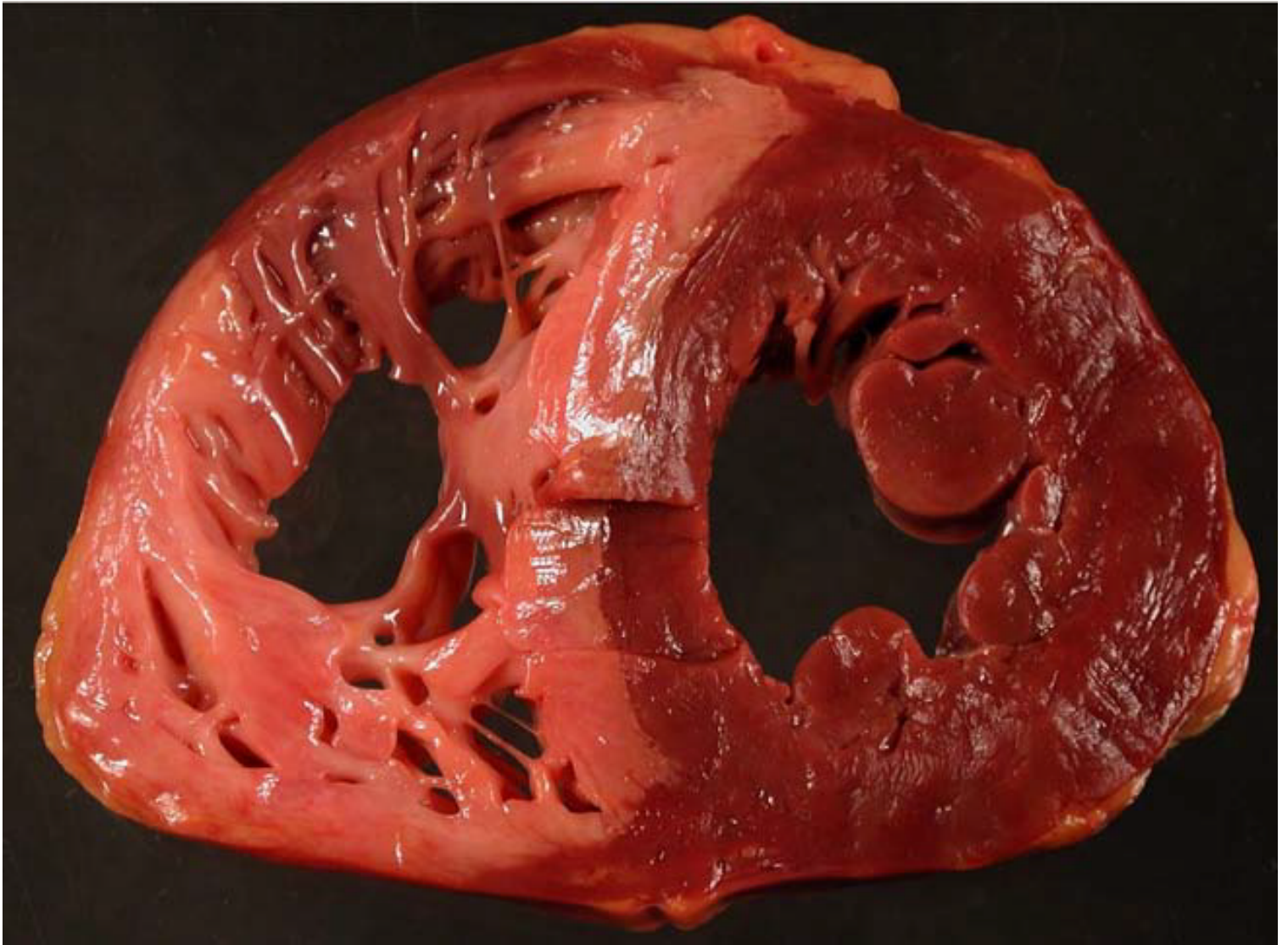


Figure S25. See Table 2 for interpretation of cardiac involvement. Reprinted from Tavora et al¹⁸ with permission. Copyright ©2009, Elsevier.



Figure S26. See Table 2 for interpretation of cardiac involvement. Reprinted from Dubrey et al¹⁹ with permission. Copyright ©2010, Elsevier.

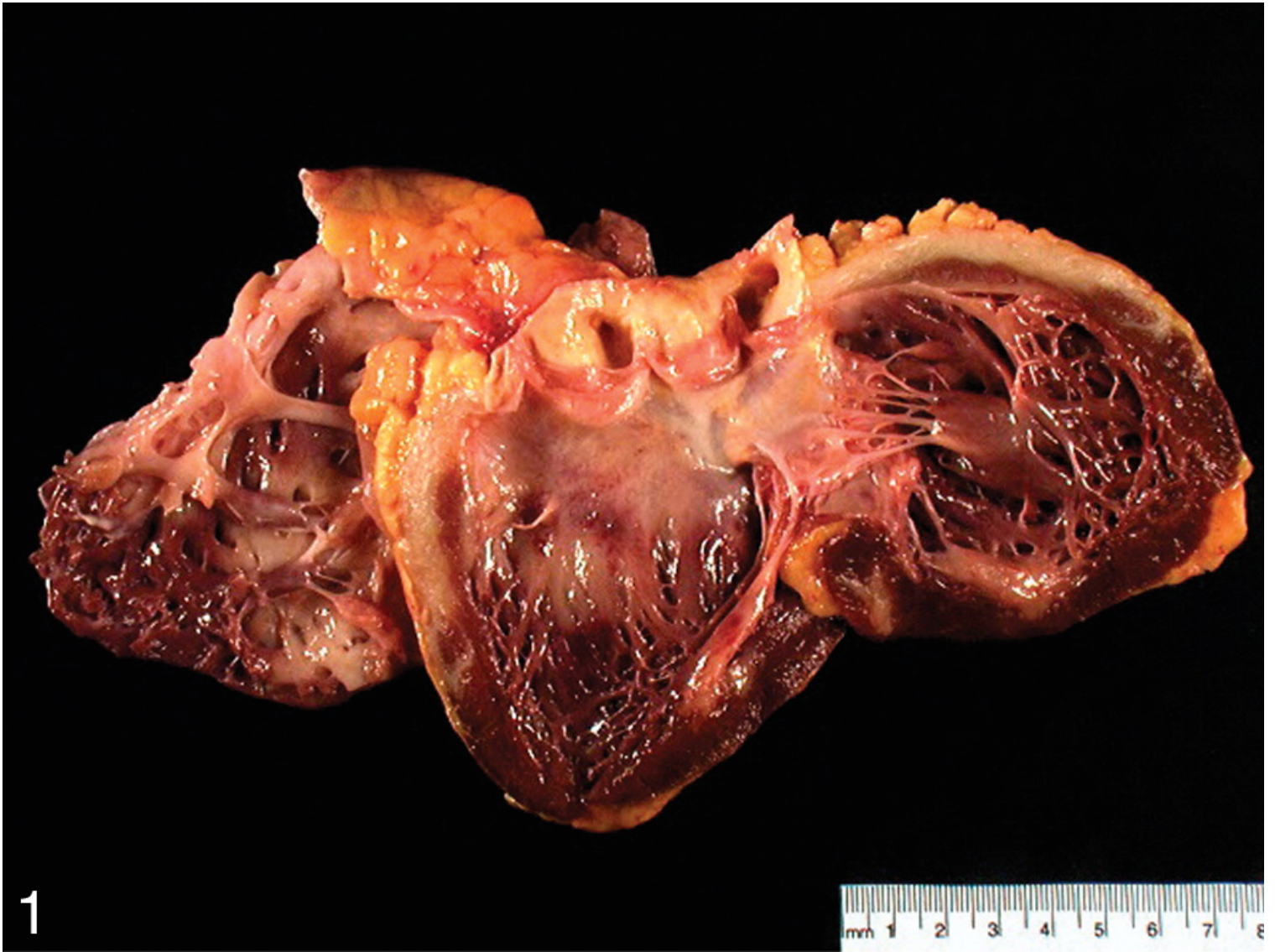


Figure S27. See Table 2 for interpretation of cardiac involvement. Reprinted from Lagana et al²⁰ with permission. Copyright ©2010, College of American Pathologists.



Figure S28. See Table 2 for interpretation of cardiac involvement. Reprinted from Bagwan et al²¹ with permission. Copyright ©2011, Springer Nature.

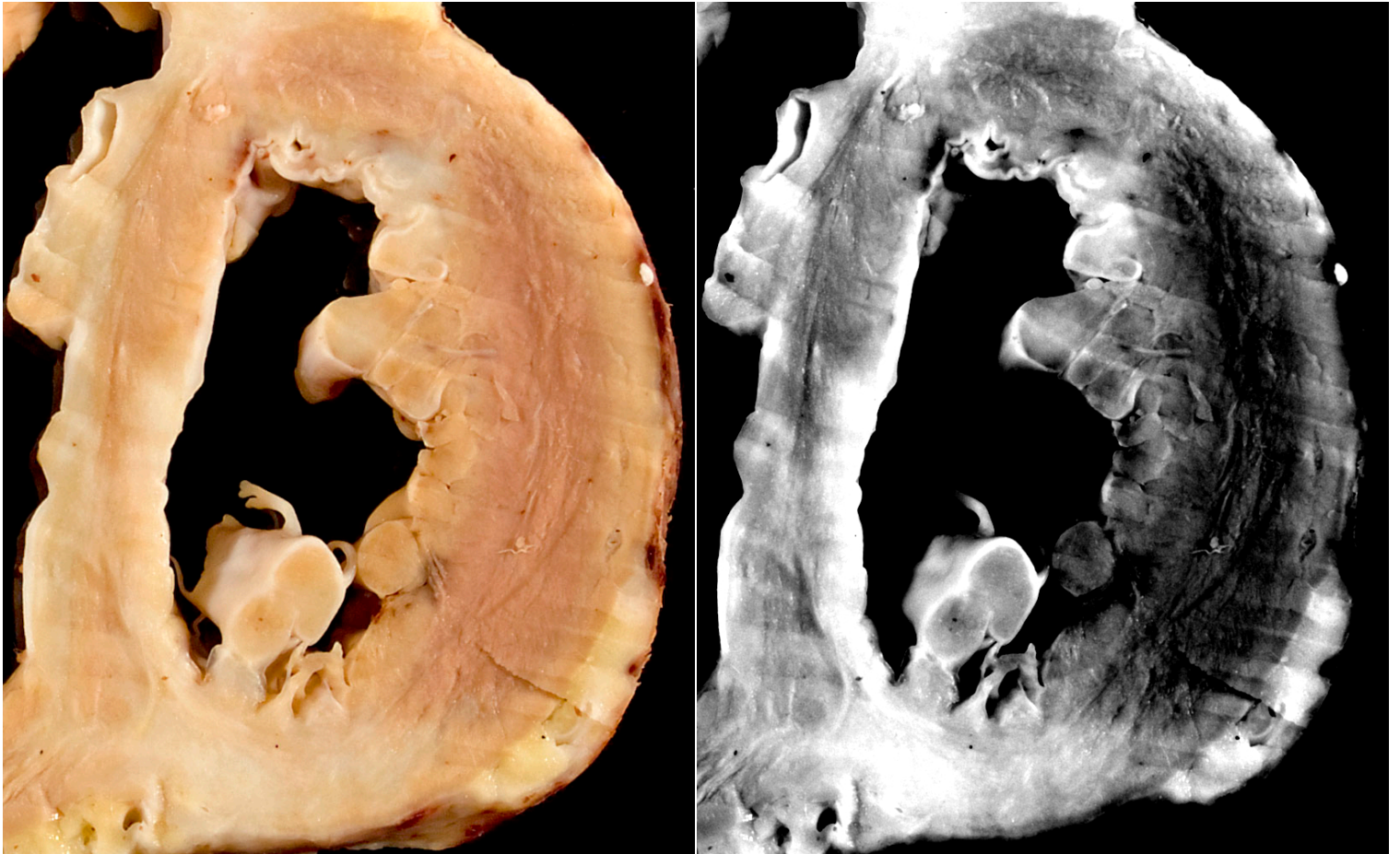


Figure S29. See Table 2 for interpretation of cardiac involvement. Reprinted from Strauss et al²² with permission. Copyright ©2011, John Wiley and Sons.



Figure S30. See Table 2 for interpretation of cardiac involvement. Reprinted from Armstrong²³ with permission. Copyright ©2013, Wolters Kluwer Health, Inc.



Figure S31. See Table 2 for interpretation of cardiac involvement. Reprinted from Zacek et al²⁴ with permission. Copyright ©2013, John Wiley and Sons.

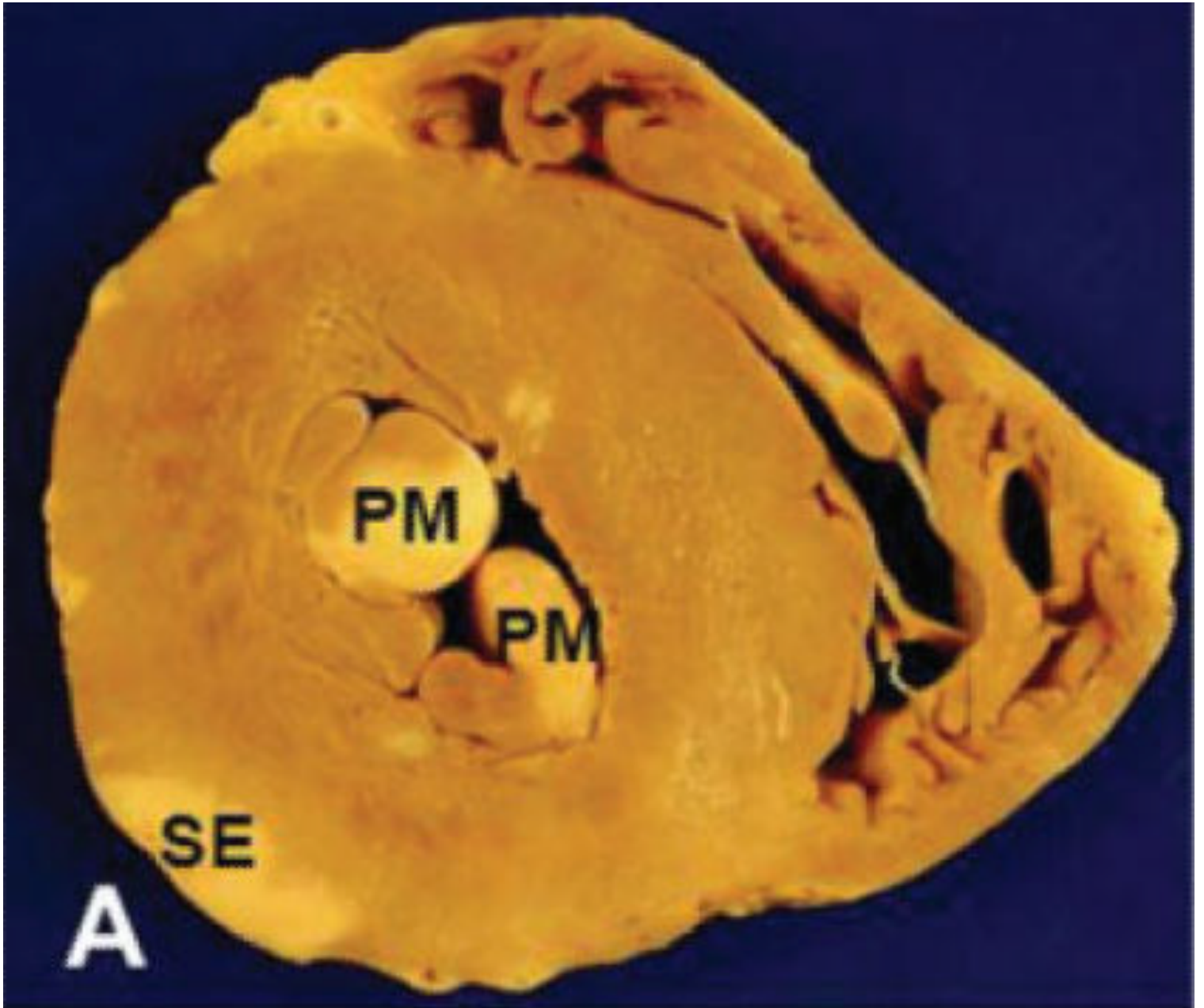


Figure S32. See Table 2 for interpretation of cardiac involvement. Reprinted from Lynch et al²⁵ with permission. Copyright ©2014, Georg Thieme Verlag KG.

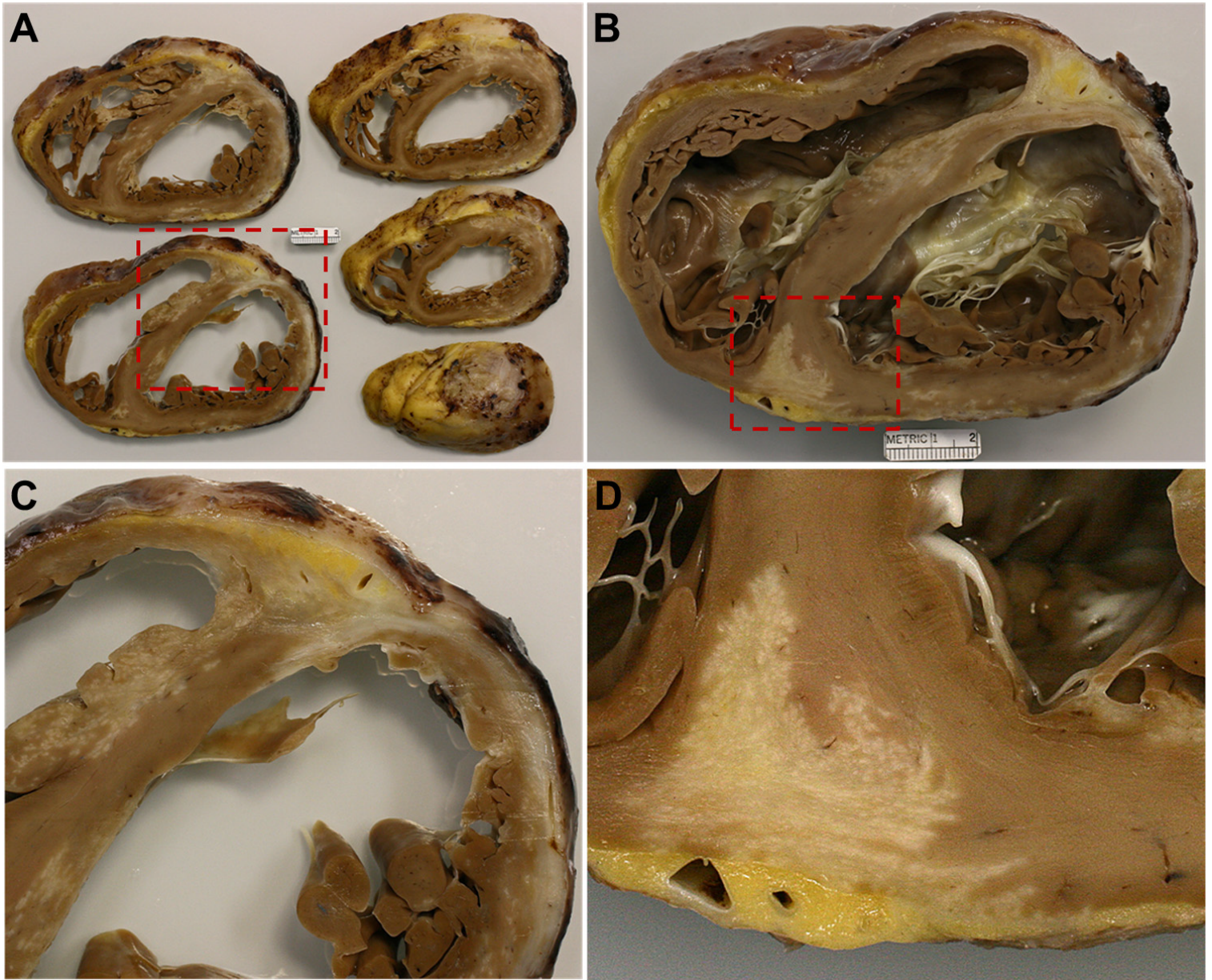


Figure S33. See Table 2 for interpretation of cardiac involvement. Reprinted from Roberts et al²⁶ with permission. Copyright ©2014, Elsevier.

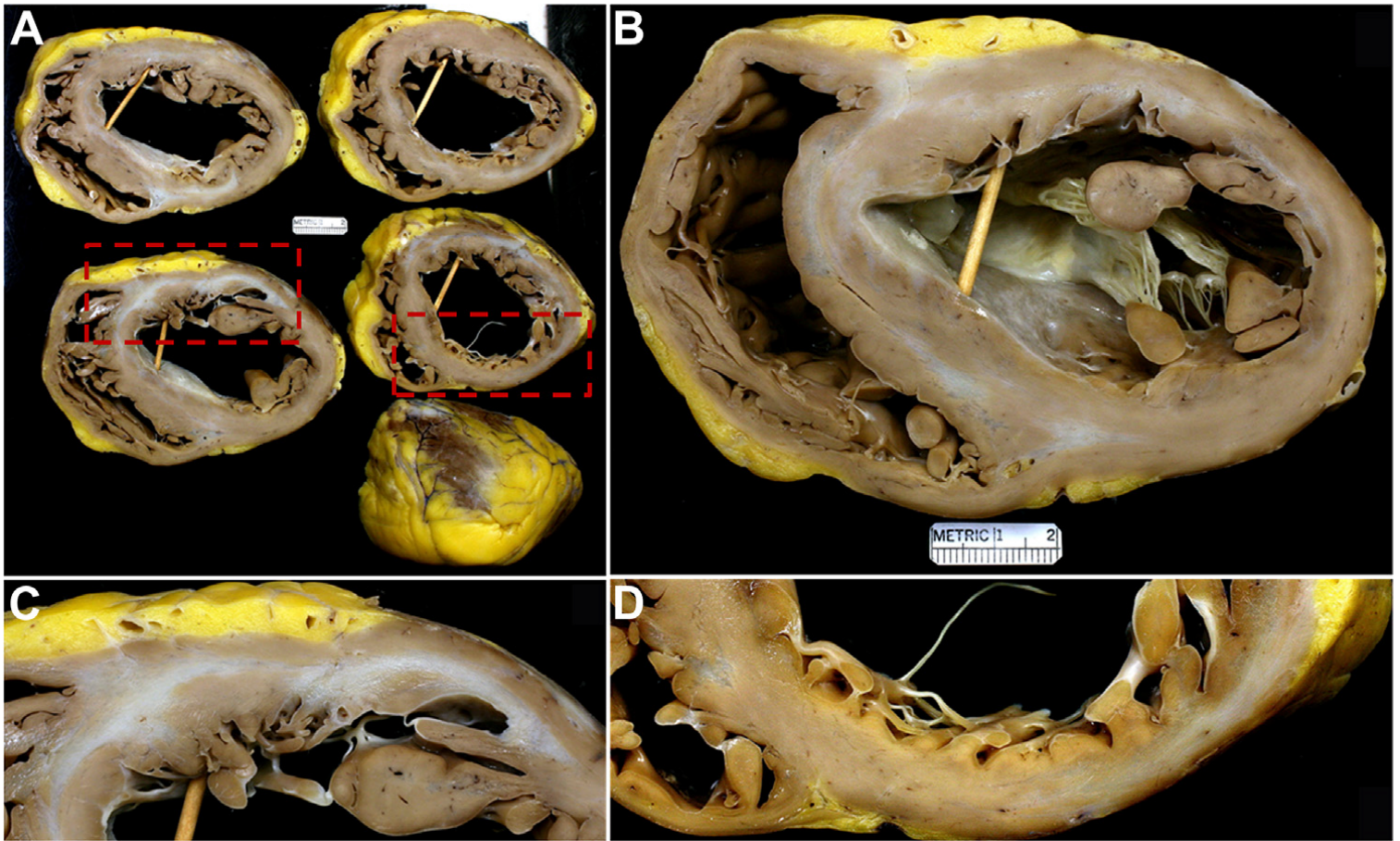


Figure S34. See Table 2 for interpretation of cardiac involvement. Reprinted from Roberts et al²⁶ with permission. Copyright ©2014, Elsevier.

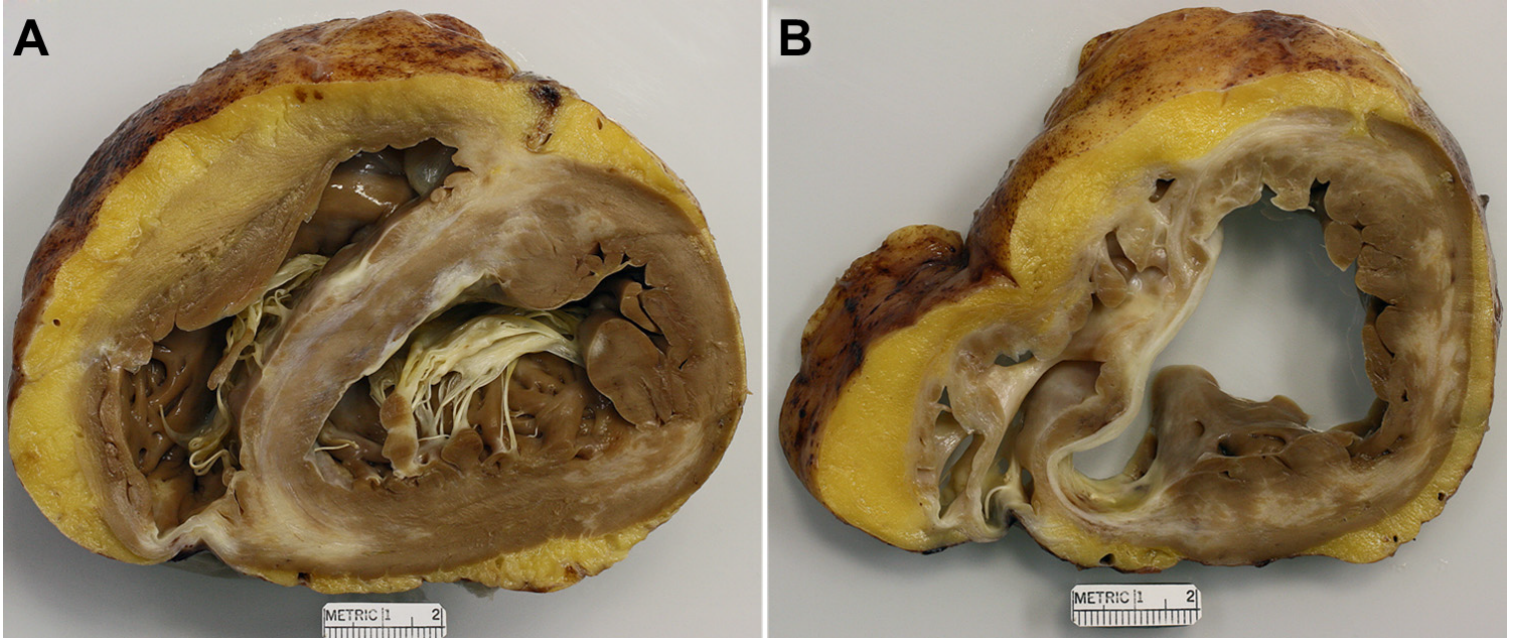


Figure S35. See Table 2 for interpretation of cardiac involvement. Reprinted from Roberts et al²⁶ with permission. Copyright ©2014, Elsevier.

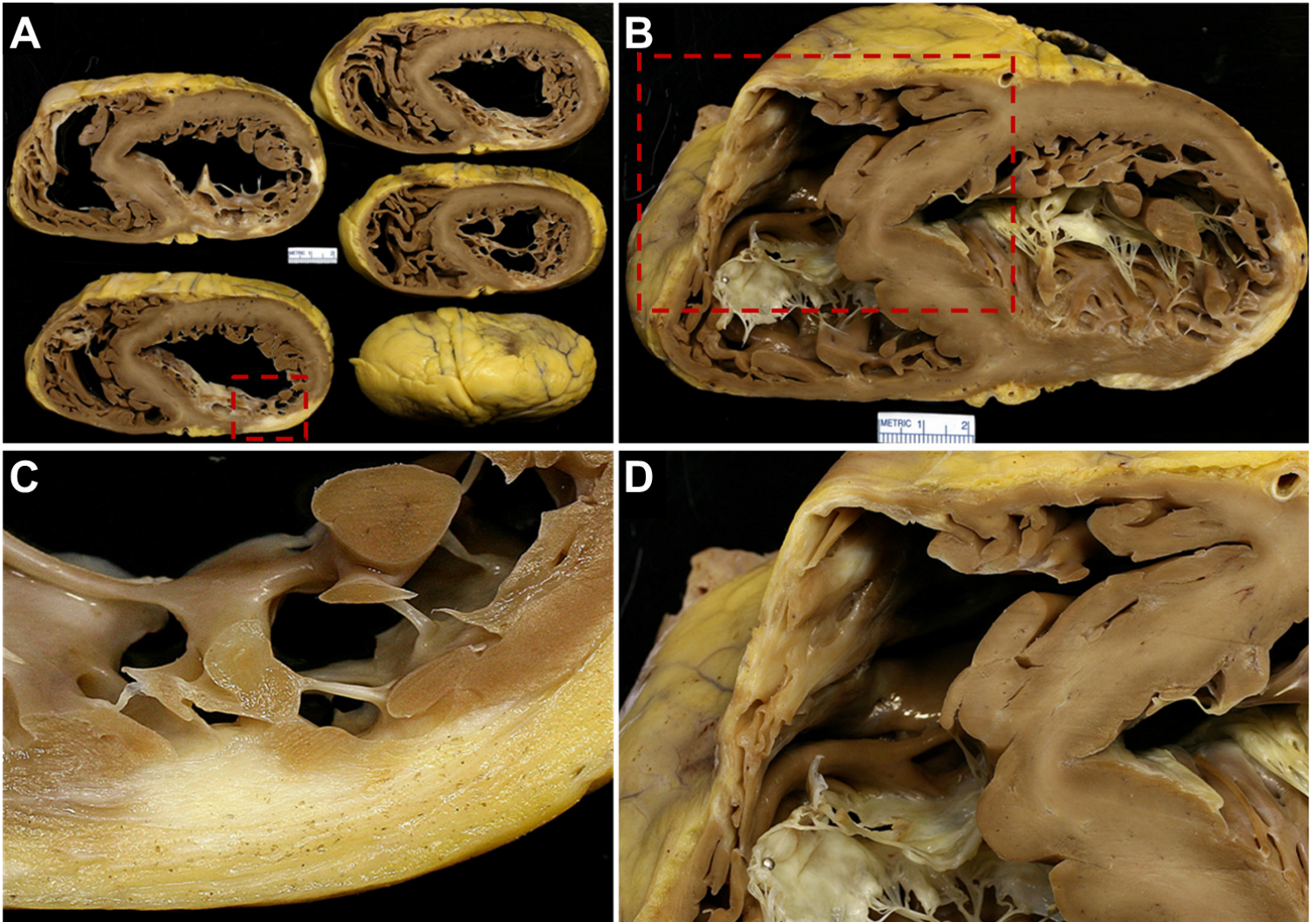


Figure S36. See Table 2 for interpretation of cardiac involvement. Reprinted from Roberts et al²⁶ with permission. Copyright ©2014, Elsevier.

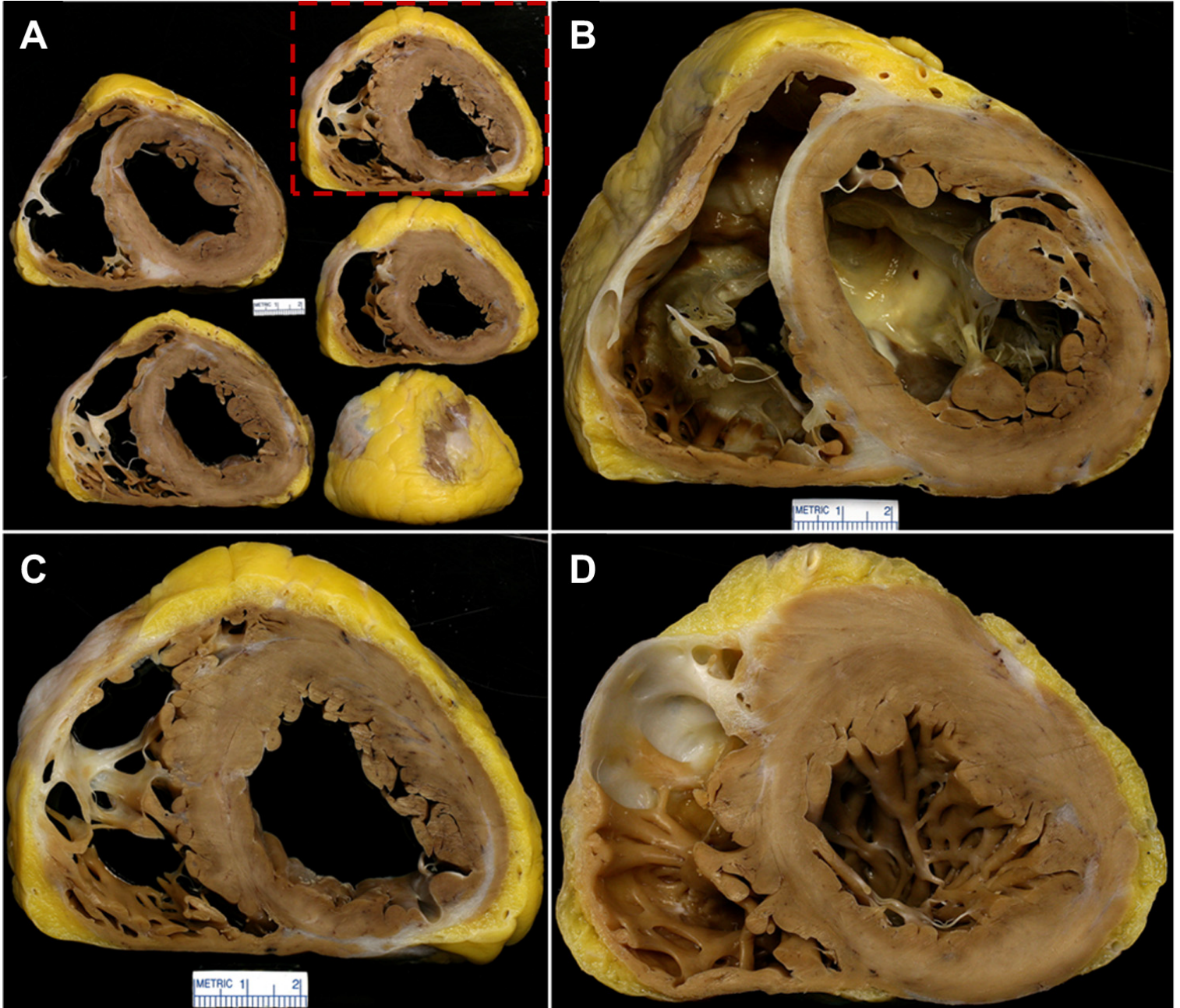


Figure S37. See Table 2 for interpretation of cardiac involvement. Reprinted from Roberts et al²⁶ with permission. Copyright ©2014, Elsevier.



Figure S38. See Table 2 for interpretation of cardiac involvement. Reprinted from Roberts et al²⁷ with permission. Copyright ©2014, Wolters Kluwer Health, Inc.

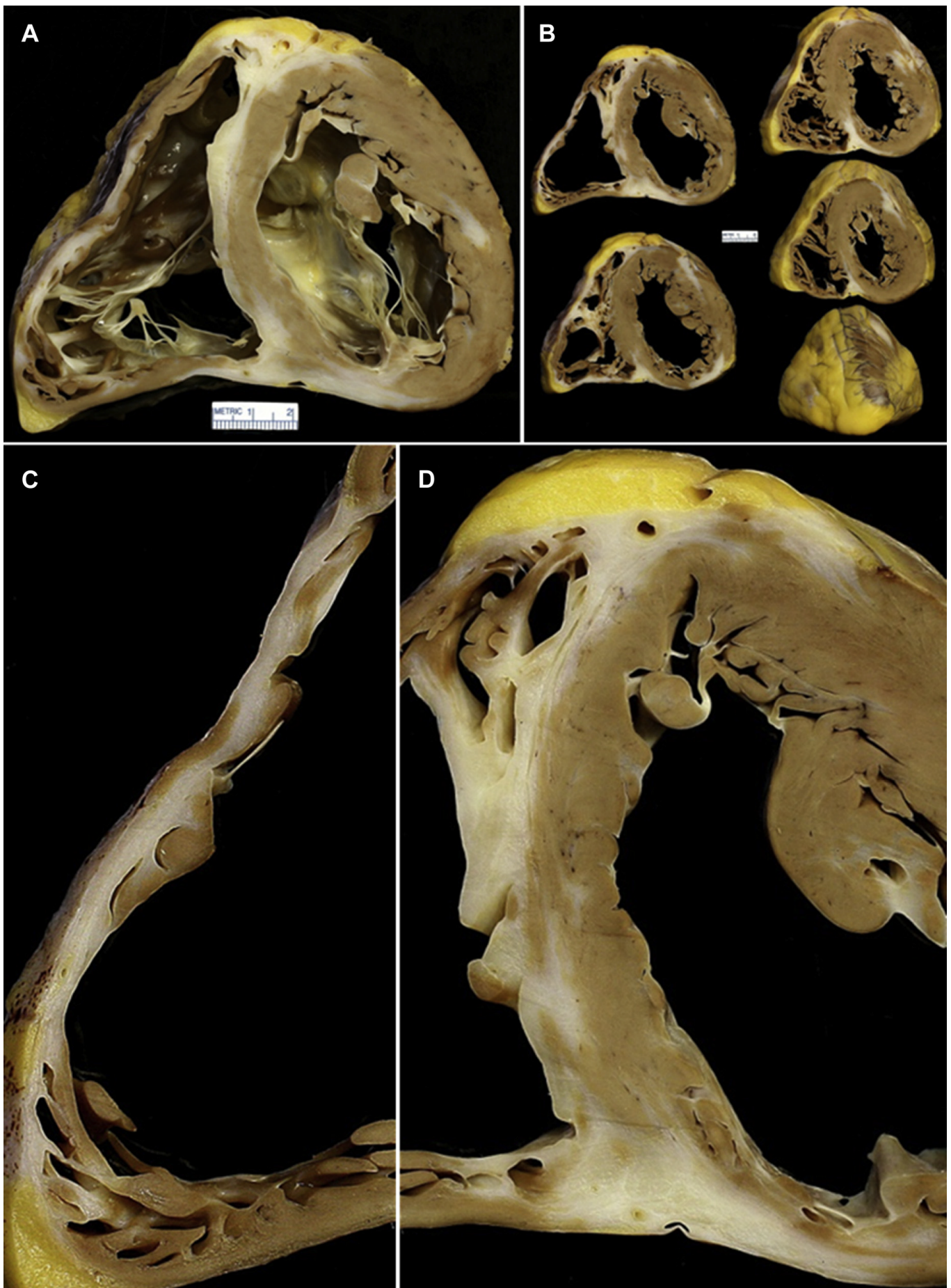


Figure S39. See Table 2 for interpretation of cardiac involvement. Reprinted from Armstrong et al²⁸ with permission. Copyright© 2015, Elsevier.

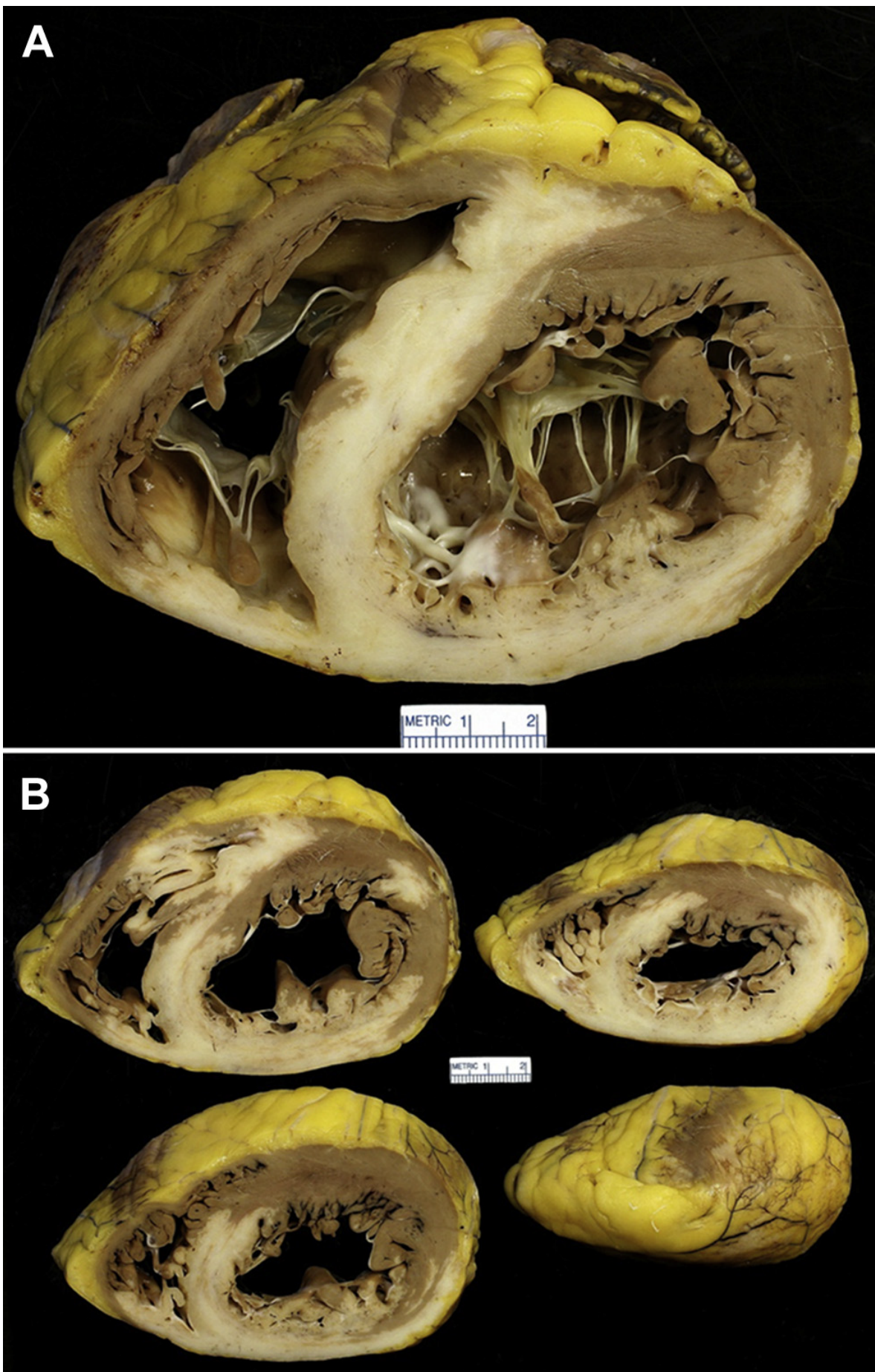


Figure S40. See Table 2 for interpretation of cardiac involvement. Reprinted from Armstrong et al²⁸ with permission. Copyright© 2015, Elsevier.

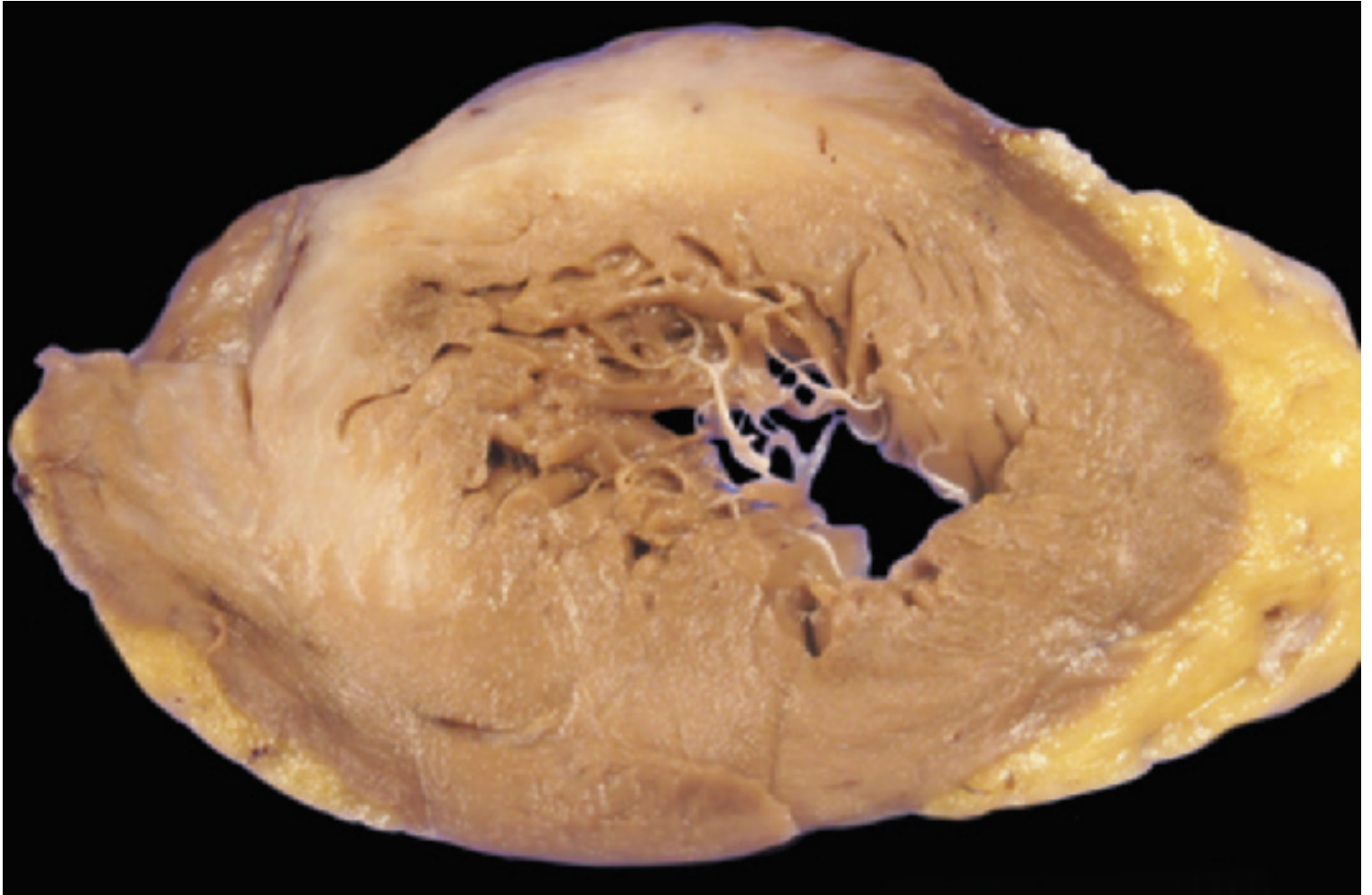


Figure S41. See Table 2 for interpretation of cardiac involvement. Reprinted from Jeudy et al²⁹ with permission. Copyright ©2015, Radiological Society of North America.

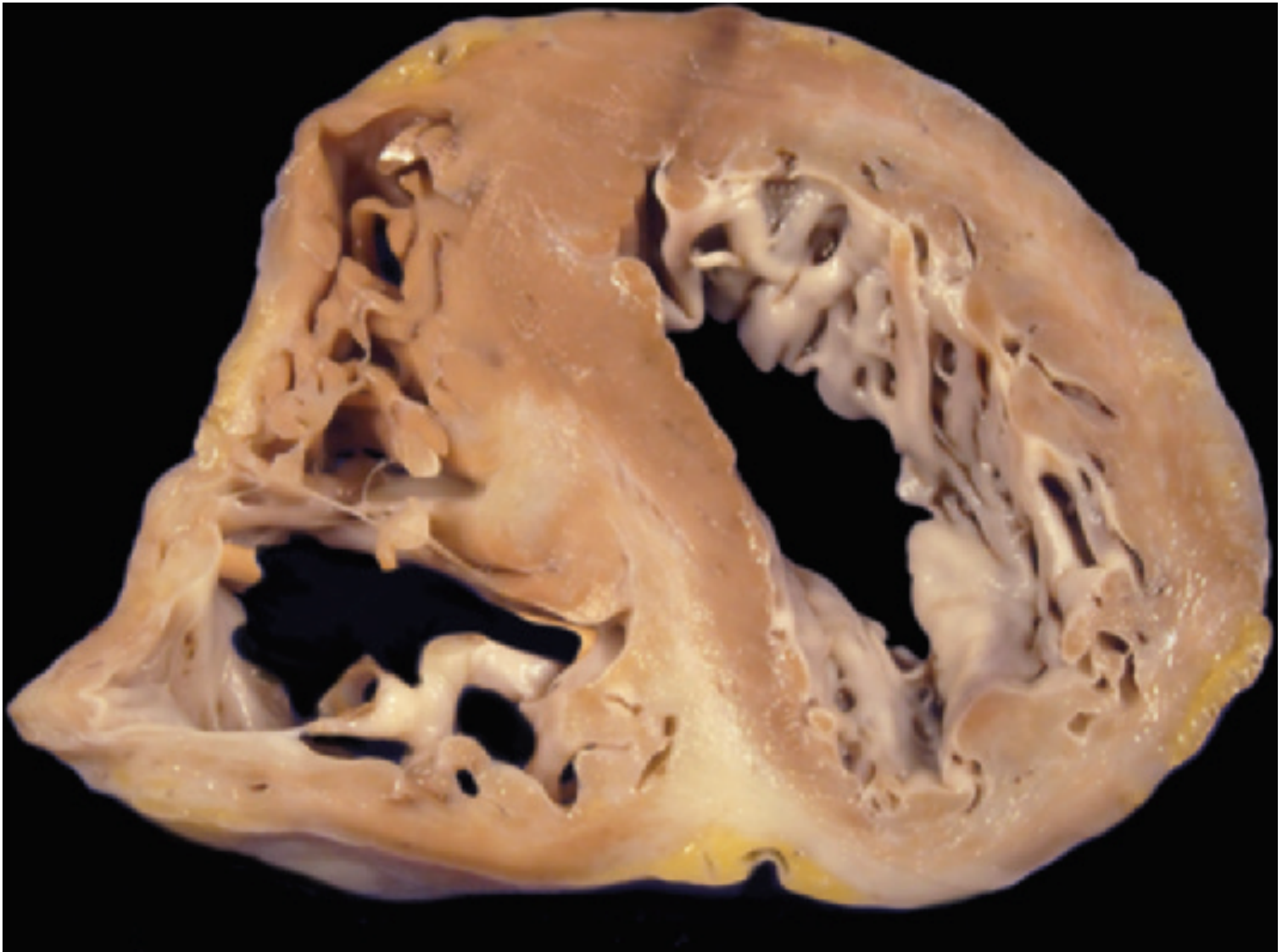


Figure S42. See Table 2 for interpretation of cardiac involvement. Reprinted from Jeudy et al²⁹ with permission. Copyright ©2015, Radiological Society of North America.

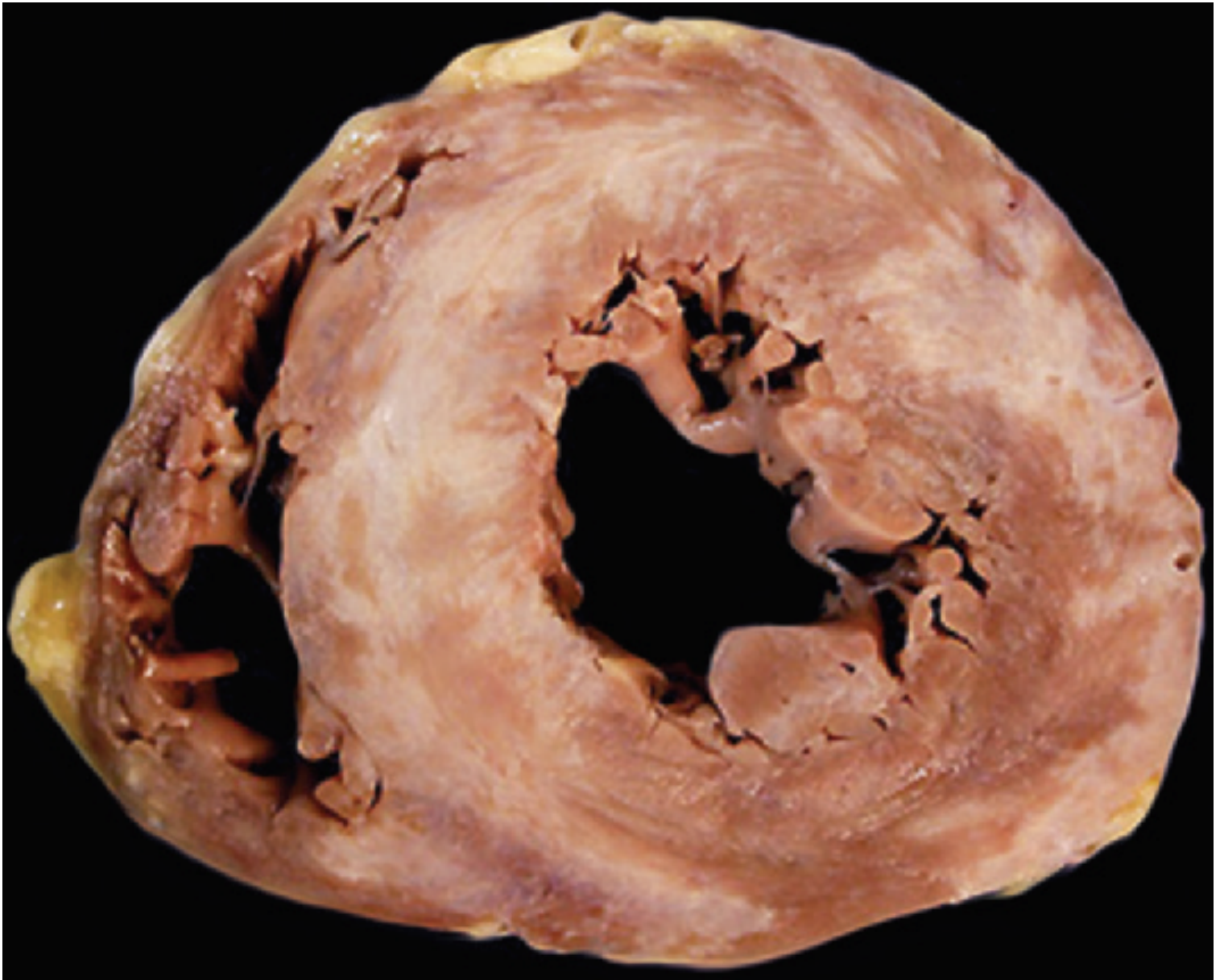


Figure S43. See Table 2 for interpretation of cardiac involvement. Reprinted from Jeudy et al²⁹ with permission. Copyright ©2015, Radiological Society of North America.

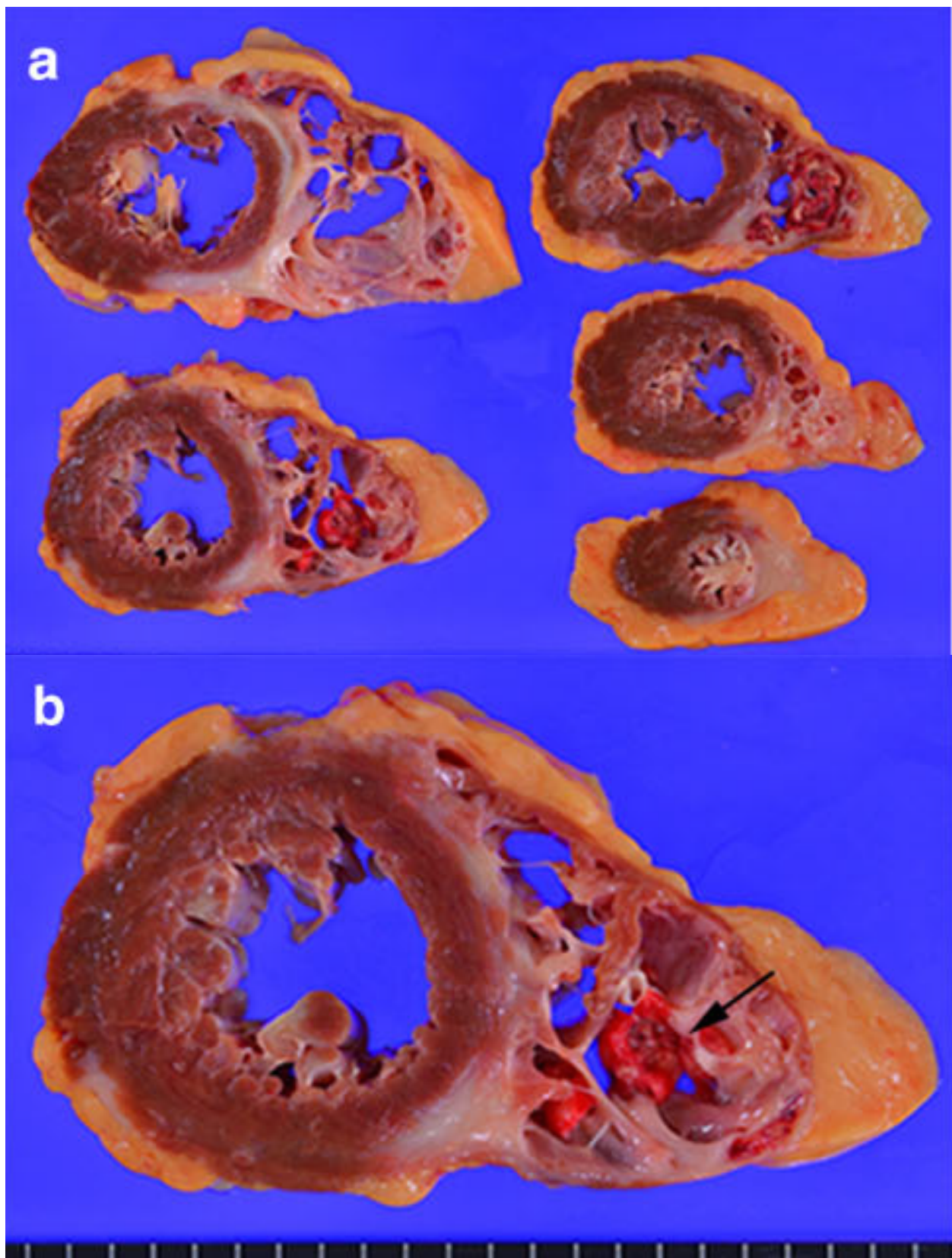


Figure S44. See Table 2 for interpretation of cardiac involvement. Reprinted from Kajimoto et al³⁰ with permission. Copyright ©2015, John Wiley and Sons.

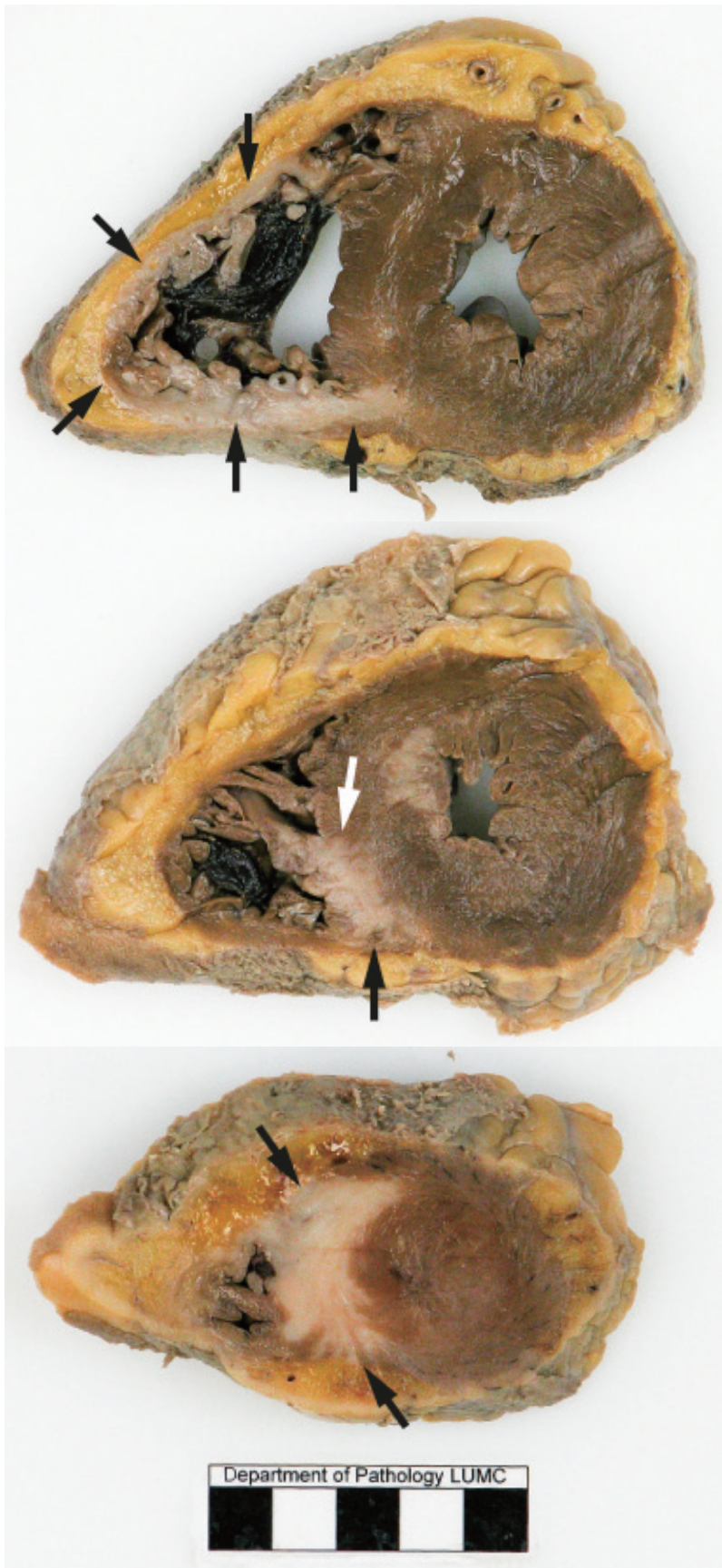
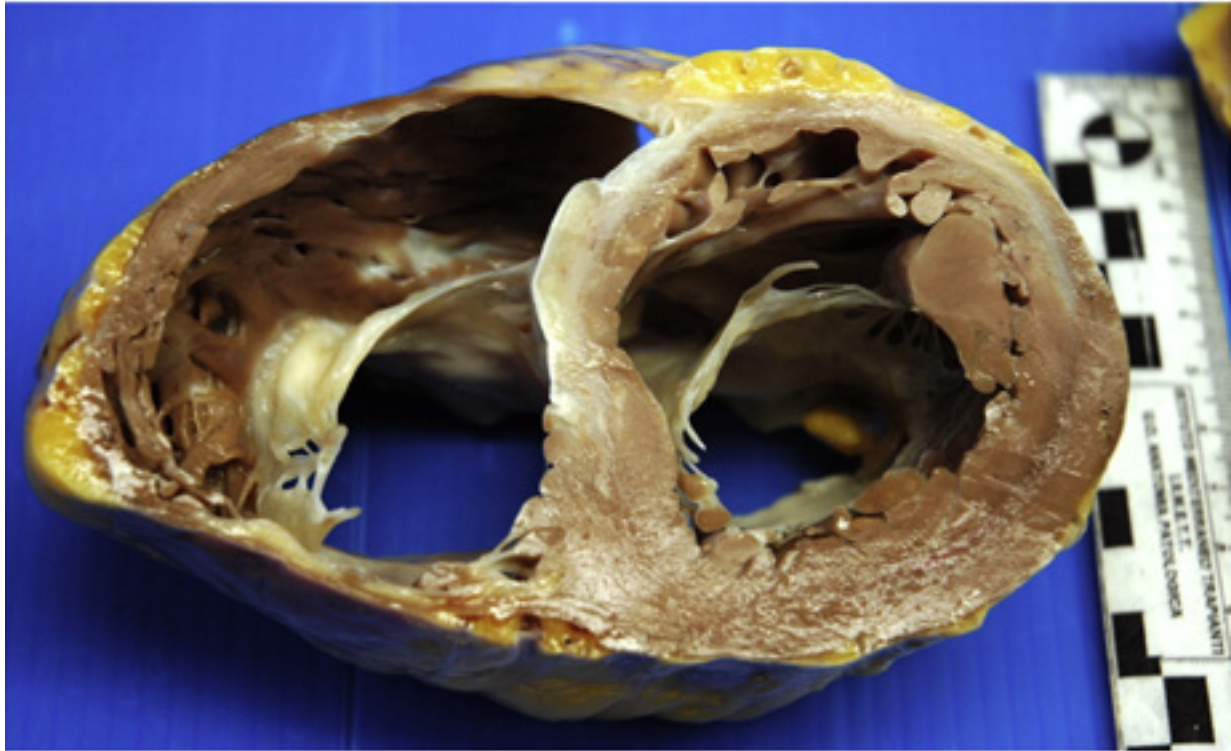


Figure S45. See Table 2 for interpretation of cardiac involvement. Reprinted from Vasaturo et al³¹ with permission. Copyright ©2015, The Korean Society of Radiology.

a



b



Figure S46. See Table 2 for interpretation of cardiac involvement. Reprinted from Di Gesaro et al³² with permission. Copyright ©2016, Elsevier.



Figure S47. See Table 2 for interpretation of cardiac involvement. Reprinted from Roberts et al³³ with permission. Copyright ©2018, American Medical Association.

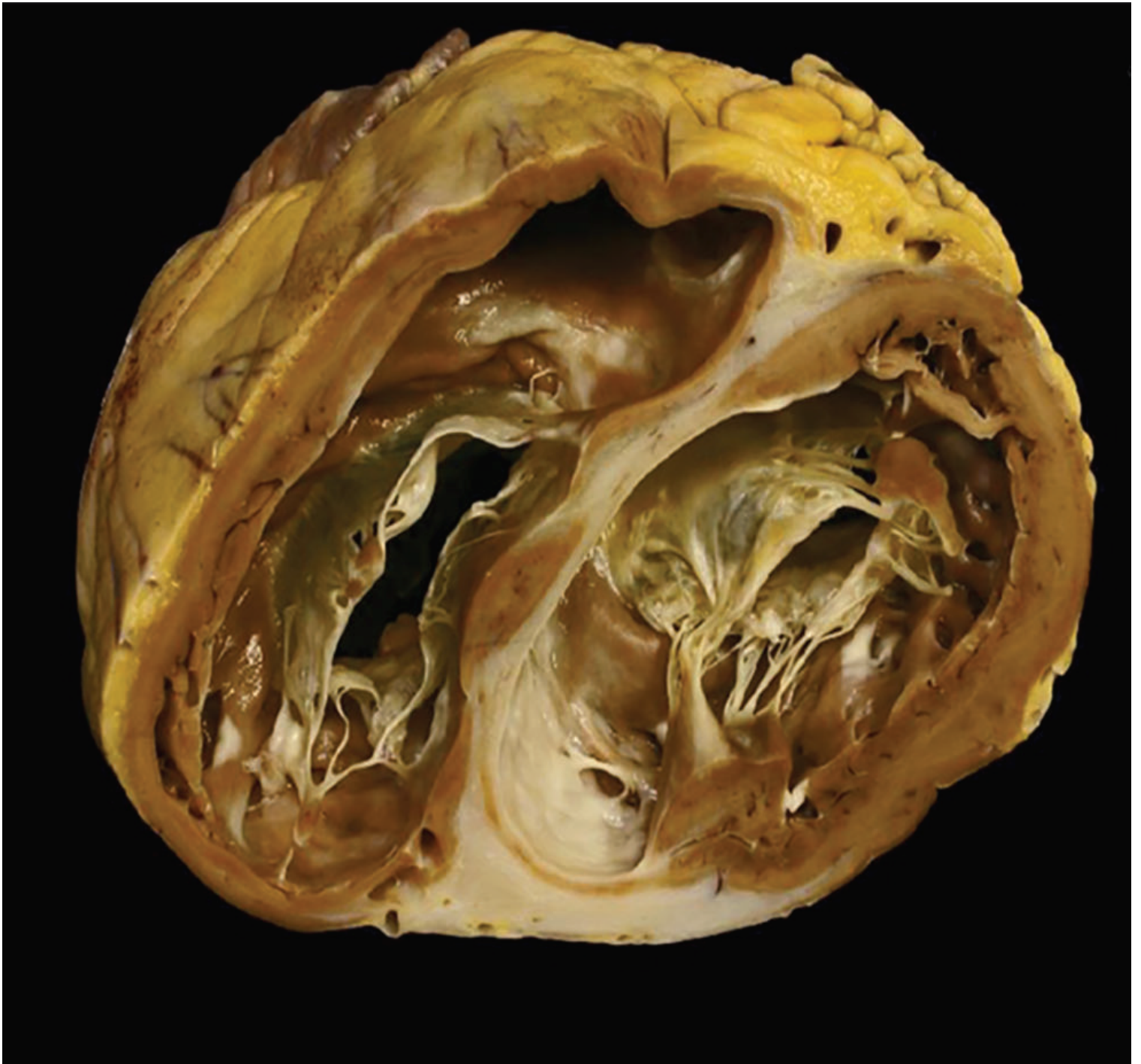


Figure S48. See Table 2 for interpretation of cardiac involvement. Reprinted from Roberts et al³³ with permission. Copyright ©2018, American Medical Association.

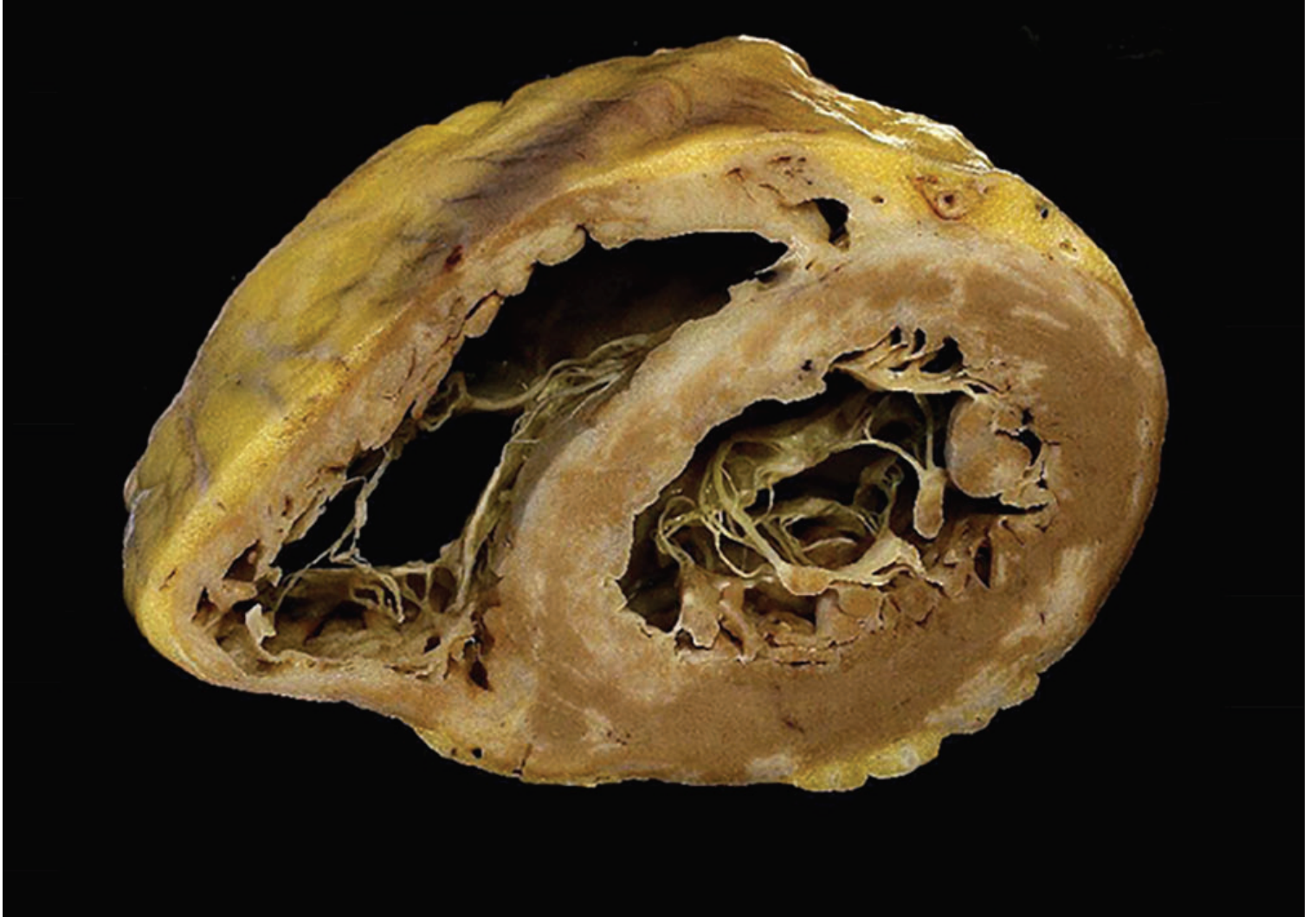


Figure S49. See Table 2 for interpretation of cardiac involvement. Reprinted from Roberts et al³³ with permission. Copyright ©2018, American Medical Association.

Supplemental References:

1. Fawcett FJ, Goldberg MJ. Heart block resulting from myocardial sarcoidosis. *Br Heart J.* 1974;36:220-3.
2. Fleming HA. Sarcoid heart disease. *Br Heart J.* 1974;36:54-68.
3. Roberts WC, McAllister HA, Jr., Ferrans VJ. Sarcoidosis of the heart. A clinicopathologic study of 35 necropsy patients (group 1) and review of 78 previously described necropsy patients (group 11). *Am J Med.* 1977;63:86-108.
4. James RA, Pounder DJ. Cardiac sarcoidosis with spontaneous rupture of the right ventricle. *Forensic Sci Int.* 1982;20:167-71.
5. Refractory ventricular arrhythmias and death in a 43-year-old man. *Am J Med.* 1990;89:496-506.
6. Antecol DH, Roberts WC. Sudden death behind the wheel from natural disease in drivers of four-wheeled motorized vehicles. *Am J Cardiol.* 1990;66:1329-35.
7. Shirani J, Roberts WC. Subepicardial myocardial lesions. *Am Heart J.* 1993;125:1346-52.
8. Donsky AS, Escobar J, Capehart J, Roberts WC. Heart transplantation for undiagnosed cardiac sarcoidosis. *Am J Cardiol.* 2002;89:1447-50.

9. Wan Muhaizan WM, Swaminathan M, Daud MS. Cardiac sarcoidosis: two cases with autopsy findings. *Malays J Pathol.* 2004;26:59-63.
10. Goyal SB, Aragam JR. Cardiac sarcoidosis with primary involvement of the tricuspid valve. *Cardiol Rev.* 2006;14:e12-3.
11. Halushka MK, Yuh DD, Russell SD. Right ventricle-dominant cardiac sarcoidosis with sparing of the left ventricle. *J Heart Lung Transpl.* 2006;25:479-82.
12. Hamilton RA, Sullivan L, Wolf BC. Sudden cardiac death due to giant cell inflammatory processes. *J Forensic Sci.* 2007;52:943-8.
13. Morikawa M, Kato K, Kako N, Hiramitsu S, Oguri M, Yajima K, Hibino T, Kato Y, Mizoguchi Y, Kuroda M, Yokoi K, Ichiro Morimoto S. A failed case to diagnose cardiac sarcoidosis presenting advanced atrioventricular block. *Int J Cardiol.* 2008;129:e46-9.
14. Luk A, Metawee M, Ahn E, Gustafsson F, Ross H, Butany J. Do clinical diagnoses correlate with pathological diagnoses in cardiac transplant patients? The importance of endomyocardial biopsy. *Can J Cardiol.* 2009;25:e48-54.
15. Riezzo I, Ventura F, D'Errico S, Neri M, Turillazzi E, Fineschi V. Arrhythmogenesis and diagnosis of cardiac sarcoidosis. An immunohistochemical study in a sudden cardiac death. *Forensic Sci Int.* 2009;183:e1-5.

16. Roberts WC, Vowels TJ, Ko JM, Capehart JE, Hall SA. Cardiac transplantation for cardiac sarcoidosis with initial diagnosis by examination of the left ventricular apical "core" excised for insertion of a left ventricular assist device for severe chronic heart failure. *Am J Cardiol.* 2009;103:110-4.
17. Sharma PS, Lubahn JG, Donsky AS, Yoon AD, Carry MM, Grayburn PA, Wood PB, Ko JM, Burton EC, Roberts WC. Diagnosing cardiac sarcoidosis clinically without tissue confirmation. *Proc (Bayl Univ Med Cent).* 2009;22:236-8.
18. Tavora F, Cresswell N, Li L, Ripple M, Solomon C, Burke A. Comparison of necropsy findings in patients with sarcoidosis dying suddenly from cardiac sarcoidosis versus dying suddenly from other causes. *Am J Cardiol.* 2009;104:571-7.
19. Dubrey SW, Falk RH. Diagnosis and management of cardiac sarcoidosis. *Prog Cardiovasc Dis.* 2010;52:336-46.
20. Lagana SM, Parwani AV, Nichols LC. Cardiac sarcoidosis: a pathology-focused review. *Arch Pathol Lab Med.* 2010;134:1039-46.
21. Bagwan IN, Hooper LV, Sheppard MN. Cardiac sarcoidosis and sudden death. The heart may look normal or mimic other cardiomyopathies. *Virchows Arch.* 2011;458:671-8.
22. Strauss DG, Selvester RH, Dibernardo LR. Myocardial scar in sarcoidosis by 12-lead ECG and pathology. *Ann Noninvasive Electrocardiol.* 2011;16:219-22.

23. Armstrong EJ. Multivisceral sarcoidosis: an unexpected finding in a water-related death. *Am J Forensic Med Pathol.* 2013;34:11-5.
24. Zacek P, Omran N, Chek JL, Krbal L, Vojacek J, Harrer J. Cardiac sarcoidosis. *J Card Surg.* 2013;28:525-8.
25. Lynch JP, 3rd, Hwang J, Bradfield J, Fishbein M, Shivkumar K, Tung R. Cardiac involvement in sarcoidosis: evolving concepts in diagnosis and treatment. *Semin Respir Crit Care Med.* 2014;35:372-90.
26. Roberts WC, Chung MS, Ko JM, Capehart JE, Hall SA. Morphologic features of cardiac sarcoidosis in native hearts of patients having cardiac transplantation. *Am J Cardiol.* 2014;113:706-12.
27. Roberts WC, Roberts CC, Ko JM, Filardo G, Capehart JE, Hall SA. Morphologic features of the recipient heart in patients having cardiac transplantation and analysis of the congruence or incongruence between the clinical and morphologic diagnoses. *Medicine.* 2014;93:211-35.
28. Armstrong D, Gonzalez-Stawinski GV, Ko JM, Hall SA, Roberts WC. The two extremes of cardiac sarcoidosis and the effect of Prednisone therapy. *Am J Cardiol.* 2015;115:150-3.
29. Jeudy J, Burke AP, White CS, Kramer GB, Frazier AA. Cardiac sarcoidosis: the challenge of radiologic-pathologic correlation: from the radiologic pathology archives. *Radiographics.* 2015;35:657-79.

30. Kajimoto N, Hao H, Kawakami R, Takagi Y, Fujino A, Sugahara M, Masuyama T, Hirota S. Cardiac sarcoidosis predominantly involved in right ventricle: An autopsy case. *Pathol Int.* 2015;65:619-21.
31. Vasaturo S, Ploeg DE, Buitrago G, Zeppenfeld K, Veselic-Charvat M, Kroft LJ. Right ventricular cardiomyopathy meeting the arrhythmogenic right ventricular dysplasia revised criteria? Don't forget sarcoidosis! *Korean J Radiol.* 2015;16:668-72.
32. Di Gesaro G, Tortorici E, Bellavia D, Licata P, Chiarello G, Liotta R, Scardulla C, Clemenza F. Cardiac sarcoidosis: Matching speckle tracking echocardiography to macroscopic Ventricular pathology (a case report). *Int J Cardiol.* 2016;203:753-6.
33. Roberts WC, Becker TM, Hall SA. Usefulness of Total 12-Lead QRS Voltage as a Clue to Diagnosis of Patients With Cardiac Sarcoidosis Severe Enough to Warrant Orthotopic Heart Transplant. *JAMA Cardiol.* 2018;3:64-68.