

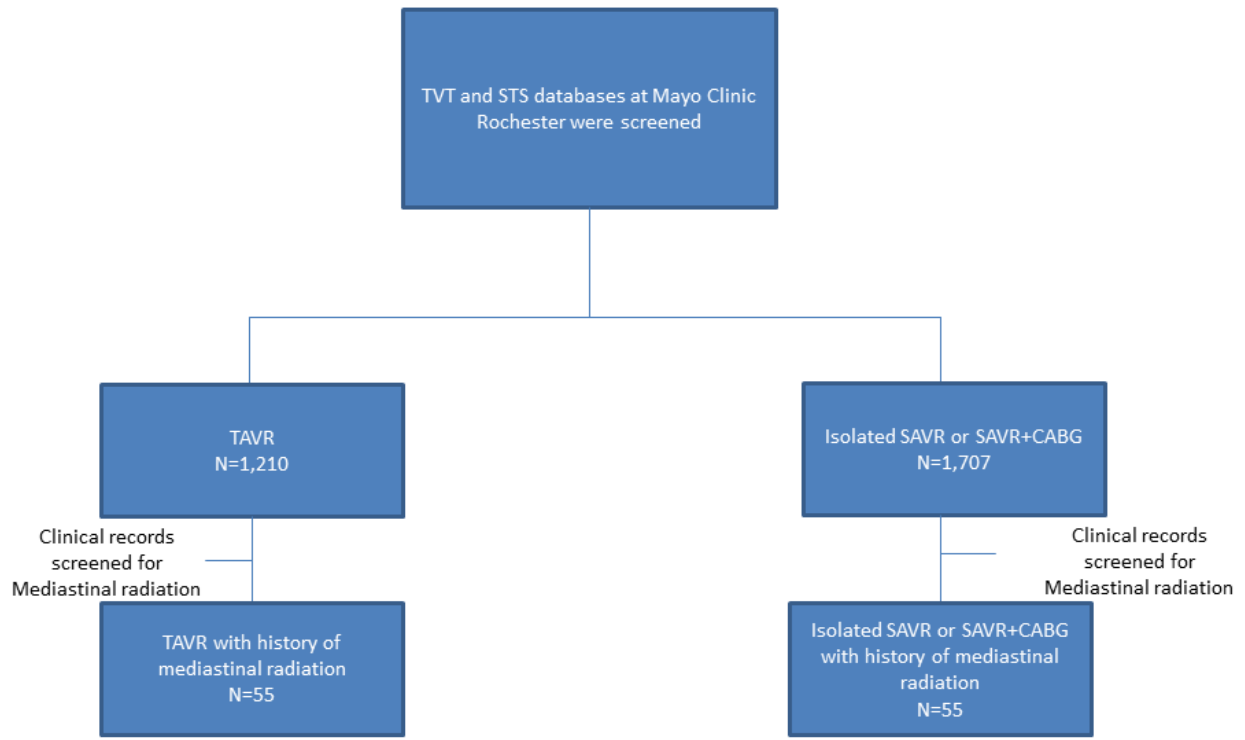
Supplemental Material

Table S1. Reasons for hospital readmission in SAVR and TAVR patients.

Patient	Days after operation	Reason for hospitalization
Surgical aortic valve replacement		
#1	18	Chest incision drainage
#2	21	Increase mean prosthetic mitral valve gradient
#3	126	Left carotid stenosis
#4	146	Recurrent symptomatic pleural effusions.
#5	13	Arrhythmia
Transcatheter aortic valve replacement		
#1	57	Recurrent bilateral pleural effusions
#2	60	Atrial fibrillation
#3	39	Prosthetic aortic valve endocarditis with <i>Pseudomonas aeruginosa</i>
#4	17	Heart failure
#5	12	Atrial fibrillation
#6	143	Respiratory failure
#7	424	Aortic valve regurgitation
#8	70	Atrial flutter
#9	33	Heart failure
#10	64	Respiratory failure
#11	159	Indeterminate spells
#12	96	Inability to perform self-cares, multifactorial
#13	43	Sepsis
#14	364	Heart failure
#15	19	Heart failure

#16	31	Disabling claudication of the right lower extremity
#17	33	Healthcare associated pneumonia
#18	86	Gastrointestinal bleed
#19	165	Disabling claudication of the right lower extremity
#20	24	Inflammatory pericarditis
#21	141	Streptococcus mitis endocarditis
#22	106	Fall from standing height
#23	22	Streptococcus mitis endocarditis
#24	9	Left groin pseudoaneurysm
#25	15	High-grade AV block
#26	59	Pancreatic adenocarcinoma

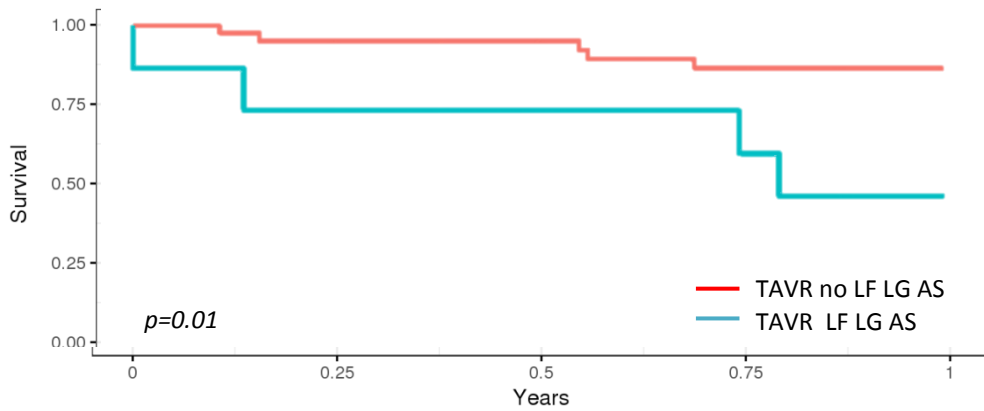
Figure S1. Patient flow chart for the cohort of patients included in this study.



CABG: coronary artery bypass grafting, SAVR: surgical aortic valve replacement, TAVR: transcatheter aortic valve replacement.

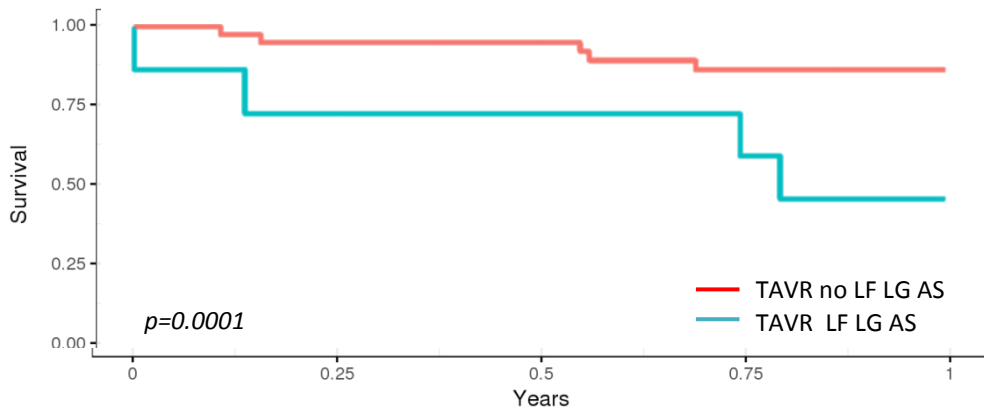
Figure S2. A: Unadjusted Kaplan-Meier curves for survival at 1 year follow-up for patients undergoing transcatheter aortic valve replacement (TAVR) with and without low flow-low gradient aortic stenosis (LF-LG AS), (HR 4.81, 95% CI 1.29-17.91, p=0.02); B: Inverse probability of treatment weighting-adjusted Kaplan-Meier curves for survival at 1 year follow-up for the two specified groups, (HR 4.80, 95% CI 1.96-11.73, p=0.0006).

A



SAVR	45	40	37	32	29
TAVR	8	6	6	6	3

B



SAVR	45	40	37	32	29
TAVR	8	6	6	5	3