

# **SUPPLEMENTAL MATERIAL**

**Table S1. Preoperative variables entered into the logistic regression model for cardiogenic shock.**

**Preoperative variables**

|     |   |          |
|-----|---|----------|
| 1)  | Female sex                                | (yes/no) |
| 2)  | Age (years)                               | (metric) |
| 3)  | Body mass index >30 kg/m <sup>2</sup>     | (yes/no) |
| 4)  | Coronary artery disease (3VD)             | (yes/no) |
| 5)  | Left main stem stenosis                   | (yes/no) |
| 6)  | STEMI                                     | (yes/no) |
| 7)  | Previous MI                               | (yes/no) |
| 8)  | Previous Stroke                           | (yes/no) |
| 9)  | Diabetes                                  | (yes/no) |
| 10) | Hypertension                              | (yes/no) |
| 11) | Hyperlipidemia                            | (yes/no) |
| 12) | COLD                                      | (yes/no) |
| 13) | Smoker                                    | (yes/no) |
| 14) | Peripheral vascular disease               | (yes/no) |
| 15) | Atrial fibrillation                       | (yes/no) |
| 16) | Chronic kidney disease (EPI Stage III-IV) | (yes/no) |
| 17) | Left ventricular ejection fraction        | (yes/no) |
| 18) | PCI 24 hrs before surgery                 | (yes/no) |
| 19) | Previous cardiac surgery                  | (yes/no) |
| 20) | Logistic EuroSCORE                        | (metric) |
| 21) | Troponin T or I levels >2 ULN             | (yes/no) |
| 22) | Dual antiplatelet therapy                 | (yes/no) |

**Table S2. Pre- and intraoperative variables entered into the logistic regression model for in-hospital mortality and MACCE.**

**Preoperative variables**

|     |   |                 |
|-----|---|-----------------|
| 23) | Female sex                                | (yes/no)        |
| 24) | Age (years)                               | (metric)        |
| 25) | Body mass index                           | (metric)        |
| 26) | Coronary artery disease                   | (1VD, 2VD, 3VD) |
| 27) | Left main stem stenosis                   | (yes/no)        |
| 28) | Previous MI                               | (yes/no)        |
| 29) | Previous Stroke                           | (yes/no)        |
| 30) | Diabetes                                  | (yes/no)        |
| 31) | Hypertension                              | (yes/no)        |
| 32) | Hyperlipidemia                            | (yes/no)        |
| 33) | COLD                                      | (yes/no)        |
| 34) | Smoker                                    | (yes/no)        |
| 35) | Peripheral vascular disease               | (yes/no)        |
| 36) | Atrial fibrillation                       | (yes/no)        |
| 37) | Chronic kidney disease (EPI Stage III-IV) | (yes/no)        |
| 38) | Left ventricular ejection fraction        | (yes/no)        |
| 39) | PCI 24 hrs before surgery                 | (yes/no)        |
| 40) | Previous cardiac surgery                  | (yes/no)        |
| 41) | Logistic EuroSCORE                        | (metric)        |
| 42) | Troponin T or I levels >2 ULN             | (yes/no)        |
| 43) | Dual antiplatelet therapy                 | (yes/no)        |
| 44) | Cardiogenic shock*                        | (yes/no)        |

\*only used for the MVA model of IHM and MACCE in ACS subtypes

**Operative variables**

|    |                  |   |
|----|------------------|---|
| 1) | Off-pump surgery | (yes/no)                                      |
| 2) | Cardioplegia     | (1= HTK vs. 2=cold blood CP vs. 3=warm blood) |

- 3) CPB time (metric)
- 4) Aortic cross-clamp time (metric)
- 5) Multiple/Total arterial revascularization (yes/no)
- 6) Number of grafts (metric)
- 7) Emergency CABG <24 hrs from onset of symptoms (yes/no)

**Table S3. Predictors of IHM and MACCE in ACS subgroups.**

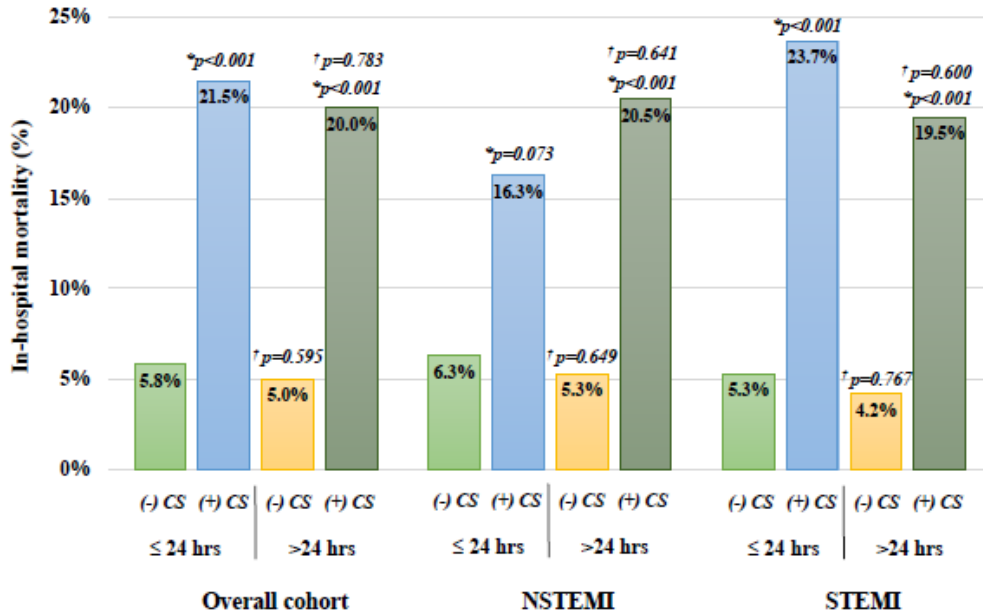
|                              | Overall ACS cohort |               |                  | NSTEMI    |               |                  | STEMI     |               |                  |
|------------------------------|--------------------|---------------|------------------|-----------|---------------|------------------|-----------|---------------|------------------|
| <b>In-hospital Mortality</b> | <b>OR</b>          | <b>95% CI</b> | <b>P-value</b>   | <b>OR</b> | <b>95% CI</b> | <b>P-value</b>   | <b>OR</b> | <b>95% CI</b> | <b>P-value</b>   |
| Age (years)                  | 1.06               | 1.02 – 1.09   | <b>0.001</b>     |           |               |                  | 1.04      | 1.00 – 1.09   | <i>0.065</i>     |
| Female sex                   | 1.79               | 1.03 – 3.10   | <b>0.038</b>     |           |               |                  |           |               |                  |
| Smoker                       | 1.87               | 1.09 – 3.21   | <b>0.022</b>     |           |               |                  |           |               |                  |
| Prior MI                     |                    |               |                  | 2.00      | 1.03 – 3.86   | <b>0.040</b>     |           |               |                  |
| Cardiogenic shock            | 2.88               | 1.63 – 5.09   | <b>&lt;0.001</b> |           |               |                  | 2.90      | 1.26 – 6.65   | <b>0.012</b>     |
| Left ventricular EF          | 0.95               | 0.93 – 0.97   | <b>&lt;0.001</b> | 0.96      | 0.94 – 0.98   | <b>&lt;0.001</b> | 0.95      | 0.92 – 0.98   | <b>&lt;0.001</b> |
| Logistic EuroSCORE           | 1.02               | 1.01 – 1.03   | <b>0.010</b>     | 1.04      | 1.02 – 1.05   | <b>&lt;0.001</b> | 1.03      | 1.01 – 1.05   | <b>0.009</b>     |
| CPB time (mins)              | 1.03               | 1.02 – 1.04   | <b>&lt;0.001</b> | 1.03      | 1.02 – 1.04   | <b>&lt;0.001</b> | 1.03      | 1.02 – 1.04   | <b>&lt;0.001</b> |
| Aortic clamp time (mins)     | 0.97               | 0.96 - 0.98   | <b>&lt;0.001</b> | 0.98      | 0.97 – 0.99   | <b>0.005</b>     | 0.97      | 0.95 – 0.98   | <b>&lt;0.001</b> |
| No. of Grafts                | 0.66               | 0.54 – 0.82   | <b>&lt;0.001</b> | 0.50      | 0.37 – 0.68   | <b>&lt;0.001</b> |           |               |                  |
| <b>MACCE</b>                 |                    |               |                  |           |               |                  |           |               |                  |
| Female sex                   | 1.66               | 1.10 – 2.51   | <b>0.015</b>     |           |               |                  | 1.95      | 1.04 – 3.66   | <b>0.037</b>     |
| Hypertension                 | 2.03               | 1.27 - 3.25   | <b>0.003</b>     |           |               |                  |           |               |                  |
| Prior stroke                 | 1.94               | 1.14 – 3.31   | <b>0.015</b>     | 1.95      | 1.04 – 3.68   | <b>0.039</b>     |           |               |                  |
| CKD-EPI stage 3-4            | 1.64               | 1.12 – 2.40   | <b>0.011</b>     |           |               |                  | 2.47      | 1.42 – 4.30   | <b>0.001</b>     |
| Cardiogenic shock            | 2.32               | 1.57 – 3.43   | <b>&lt;0.001</b> |           |               |                  | 3.88      | 2.25 – 6.68   | <b>&lt;0.001</b> |
| Dual antiplatelet therapy    |                    |               |                  | 1.73      | 1.11 – 2.71   | <b>0.016</b>     |           |               |                  |

|                          |      |             |                  |      |             |                  |      |              |                  |
|--------------------------|------|-------------|------------------|------|-------------|------------------|------|--------------|------------------|
| Left ventricular EF      | 0.95 | 0.94 – 0.97 | <b>&lt;0.001</b> | 0.96 | 0.94 – 0.97 | <b>&lt;0.001</b> | 0.94 | 0.93 – 0.96  | <b>&lt;0.001</b> |
| Troponin >2x ULN         | 2.38 | 1.26 – 4.48 | <b>0.008</b>     |      |             |                  | 3.66 | 1.32 – 10.16 | <b>0.008</b>     |
| Logistic EuroSCORE       | 1.02 | 1.01 – 1.03 | <b>&lt;0.001</b> | 1.03 | 1.01 – 1.04 | <b>&lt;0.001</b> |      |              |                  |
| Emergent CABG < 24 hrs   | 1.98 | 1.43 – 2.74 | <b>&lt;0.001</b> | 1.83 | 1.15 – 2.91 | <b>0.011</b>     | 1.97 | 1.20 – 3.21  | <b>0.007</b>     |
| CPB time (mins)          | 1.03 | 1.02 – 1.04 | <b>&lt;0.001</b> | 1.03 | 1.02 – 1.03 | <b>&lt;0.001</b> | 1.03 | 1.02 – 1.04  | <b>&lt;0.001</b> |
| Aortic clamp time (mins) | 0.98 | 0.97 - 0.99 | <b>&lt;0.001</b> | 0.98 | 0.97 - 1.00 | <b>0.031</b>     | 0.97 | 0.95 - 0.98  | <b>&lt;0.001</b> |
| No. of Grafts            | 0.79 | 0.66 – 0.94 | <b>0.009</b>     | 0.74 | 0.57 – 0.95 | <b>0.018</b>     |      |              |                  |
| Warm vs. cold blood CP   | 1.72 | 1.20 – 2.50 | <b>0.003</b>     |      |             |                  | 2.02 | 1.21 – 3.40  | <b>0.008</b>     |

CI, confidence interval; CKD-EPI, chronic kidney disease epidemiology collaboration; CP, cardioplegia; CPB, cardiopulmonary bypass;

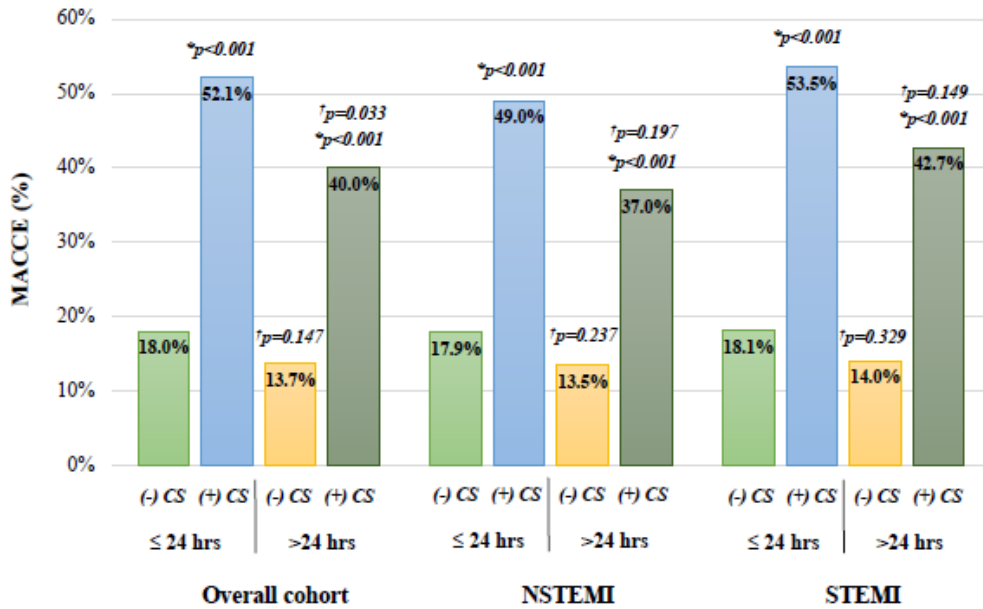
EF, ejection fraction; MI, myocardial infarction; OR, odds ratio; ULN, upper limit of normal.

**Figure S1. In-hospital mortality stratified by the timing of surgery from onset of symptoms.**



Asterisk (\*) indicates p-values compared to the corresponding ACS group without CS; Cross (†) indicates p-values compared to the corresponding group of patients undergoing emergency CABG within 24 hrs from onset of symptoms. (+) or (-) CS, with or without cardiogenic shock; NSTEMI, non-ST-segment elevation myocardial infarction; STEMI, ST-segment elevation myocardial infarction.

**Figure S2. Major adverse cardio-cerebral events (MACCE) stratified by the timing of surgery from onset of symptoms.**



Asterisk (\*) indicates p-values compared to the corresponding ACS group without CS; Cross (†) indicates p-values compared to the corresponding group of patients undergoing emergency CABG within 24 hrs from onset of symptoms. (+) or (-) CS, with or without cardiogenic shock; NSTEMI, non-ST-segment elevation myocardial infarction; STEMI, ST-segment elevation myocardial infarction.