

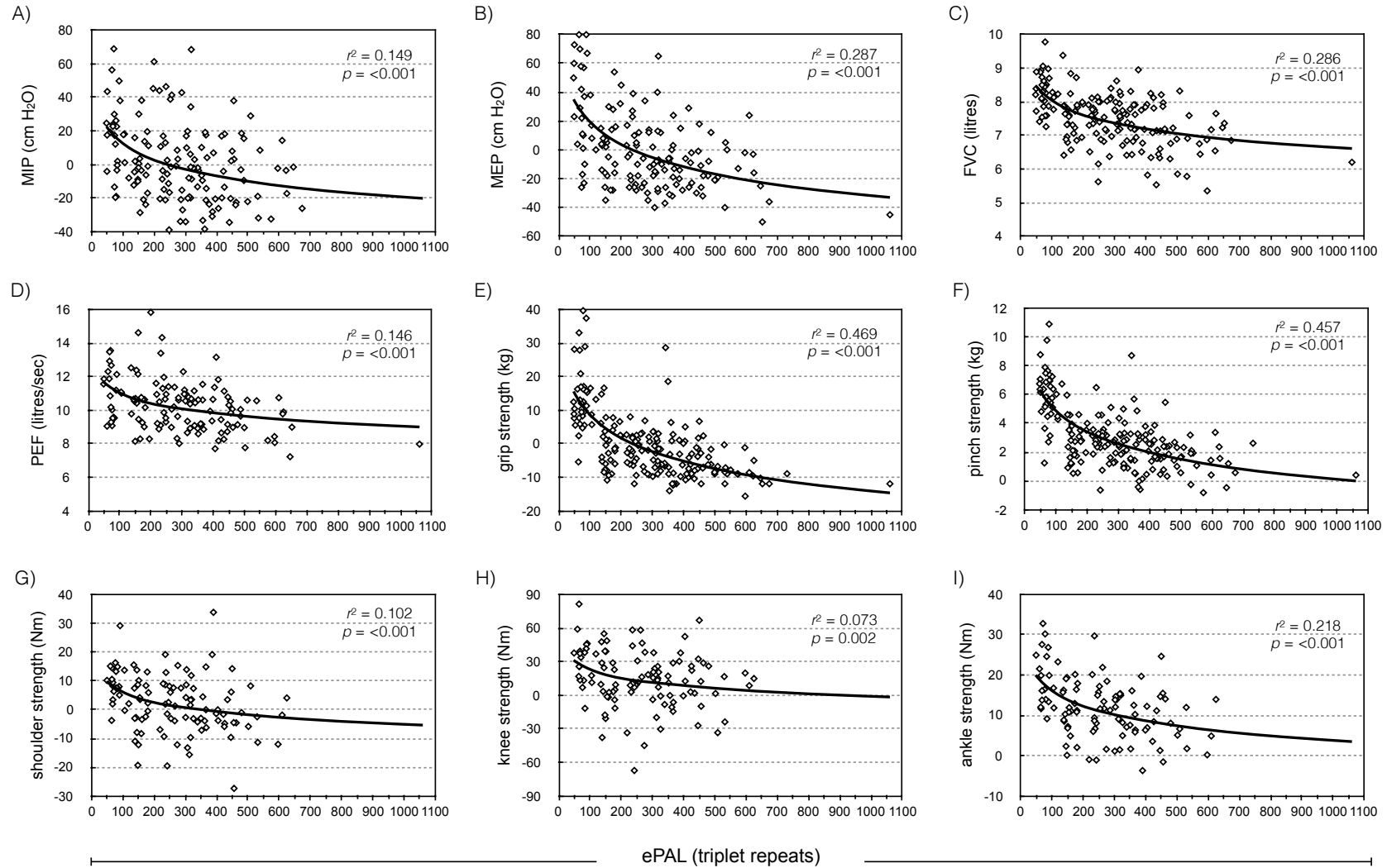
# Allele length of the *DMPK* CTG repeat is a predictor of progressive myotonic dystrophy type 1 phenotypes

Gayle Overend<sup>1</sup>, Cécilia Légaré<sup>2,3,5</sup>, Jean Mathieu<sup>4,5</sup>, Luigi Bouchard<sup>2,3,5</sup>, Cynthia Gagnon<sup>4,5</sup>, and Darren G. Monckton<sup>1,\*</sup>

## Supplementary material

measurement	males					females				
	<i>n</i>	minimum	maximum	mean	SD	<i>n</i>	minimum	maximum	mean	SD
<b>MIP (cm H<sub>2</sub>O)</b>	56	25.0	150.0	69.2	28.8	88	23.0	138.0	62.4	23.4
<b>MEP (cm H<sub>2</sub>O)</b>	56	20.0	150.0	70.1	32.8	86	23.0	125.0	58.2	24.1
<b>FVC (L)</b>	65	1.2	5.7	3.4	1.1	102	1.0	4.2	2.6	0.8
<b>PEF (L<sup>-1</sup>s<sup>-1</sup>)</b>	49	2.4	11.7	5.9	2.1	77	1.9	7.8	4.6	1.4
<b>grip (kg)</b>	75	0.0	51.5	12.6	13.3	115	0.0	27.5	9.6	7.7
<b>pinch (kg)</b>	75	2.2	13.7	6.0	2.5	114	1.3	9.9	5.3	2.0
<b>shoulder (Nm)</b>	38	30.5	94.1	57.1	12.9	69	14.3	62.0	33.6	9.2
<b>knee (Nm)</b>	37	18.9	165.3	106.1	35.5	69	20.3	110.9	68.8	20.5
<b>ankle (Nm)</b>	38	2.2	38.7	17.9	9.6	69	3.1	30.6	15.0	5.9

**Supplementary Table 1. Cohort summary for nine measures of respiratory function and muscle power.** The table lists the number of observations (*n*) minimum, maximum and mean value (with standard deviation (SD) for male and female participants for MIP, MEP, FVC, PEF, grip strength, pinch strength, shoulder abductor strength, knee extensor strength, and ankle dorsiflexor power.



**Supplementary Figure 1. Correlation between the progenitor allele and nine measure of respiratory function and skeletal muscle power is improved after factoring sex, age, height, weight and *Acil* sensitivity.** The graphs show: **A)** MIP adjusted for age and sex; **B)** MEP adjusted for sex; **C)** FVC adjusted for height, weight, age and *Acil* sensitivity; **D)** PEF adjusted for height and weight; **E)** grip adjusted for *Acil* sensitivity and sex; **F)** pinch adjusted for *Acil* sensitivity and sex; **G)** shoulder adjusted for sex and weight; **H)** knee adjusted for sex, *Acil* sensitivity, weight and age; and **I)** ankle dorsiflexor adjusted for sex, plotted against ePAL, and the corresponding  $r^2$  and  $p$  values.