

Analysing the evolutionary and functional differentiation of four types of *Daphnia*

magna cryptochrome in *Drosophila* circadian clock:

Supplementary Information

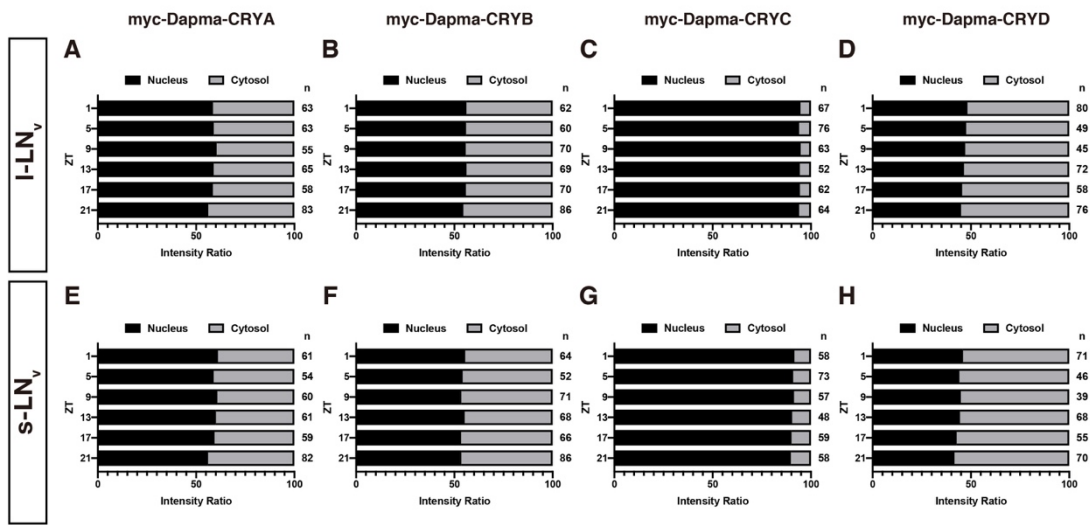
Yohei Nitta, Sayaka Matsui, Yukine Kato, Yosuke Kaga, Kenkichi Sugimoto and

Atsushi Sugie

Supplementary data

Supplementary Table 1. PCR primers for UAS vector construction

Supplemental Table 1. PCR primers for UAS vector construction	
oligo name	Sequence (5')
cry-A_CDS-F (in-fusion 20xUSA)	tctgaagaggacttgaatattctttggttccgccc
cry-A_CDS-R (in-fusion 20xUSA)	aacgattcattcttagacgattcattctagattagaac
cry-B_CDS-F (in-fusion 20xUSA)	tctgaagaggactttagtagctatgagctgcacc
cry-B_CDS-R (in-fusion 20xUSA)	aacgattcattcttagacgattcattctagattagttc
cry-C_CDS-F (in-fusion 20xUSA)	tctgaagaggacttgaataaaccagtagtcattca
cry-C_CDS-R (in-fusion 20xUSA)	aacgattcattcttagacgattcattctagattatttc
cry-D_CDS-F (in-fusion 20xUSA)	tctgaagaggacttgcacaagattgtaaacatgaca
cry-D_CDS-R (in-fusion 20xUSA)	aacgattcattcttagacgattcattctagattattttt
20xUAS+sp21+myc Sense	gCGGCCGCGGCTCGGAGAActTAAAAAAAAAAATCAAAATGGAGCAAAGCTCATTCTGGAAGAGGACTTG
20xUAS+sp21+myc AntiSense	CAAGTCCTCTCAGAAATGAGCTTTTGCTCCATTTTGATTTTTTTTTTAAGTTCTCGAGCCGCGGCCG
F Primer (XhoI+xyn21)	CTCGGAGAActTAAAAAAAAAAATCAAAATG



Supplementary Figure 1. Subcellular localisation of Dapma-CRYs at each time point. The ratio of the intensity in the nucleus and the cytoplasm of myc-tagged Dapma-CRYs at each zeitgeber time point (ZT 1, 5, 9, 13, 17, 21). **(A-D)** Intensity ratio of Dapma-CRYs in I-LN_v. **(E-H)** Intensity ratio of Dapma-CRYs in s-LN_v. n represents the number of cells quantified.