

Fig 1 Brain maps for GM difference between the MSAc and HC groups. Blue color denotes decreased GM volume in MSAc than HC group.

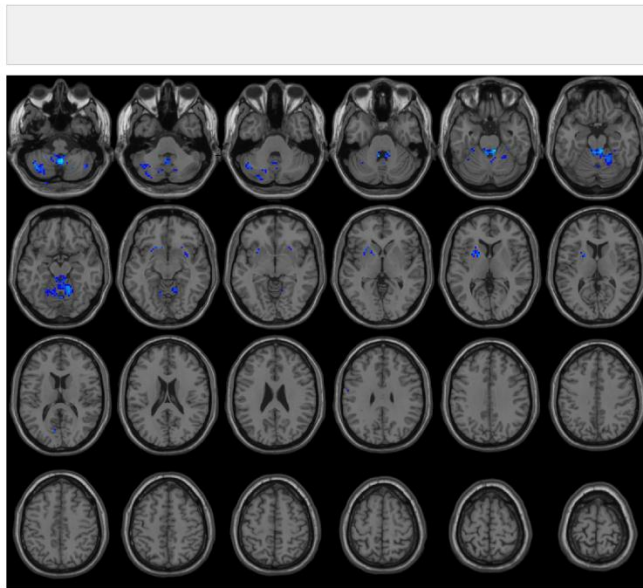


Fig 2 Brain maps for GM difference between the MSAp and HC groups. Blue color denotes decreased GM volume in MSAp than HC group.

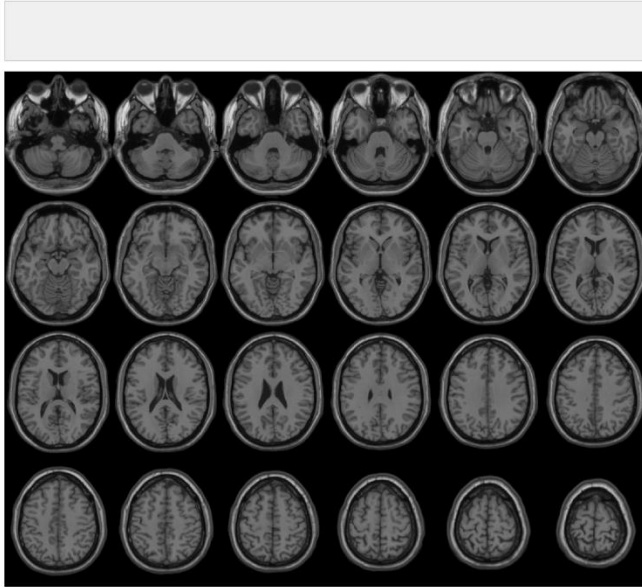


Fig 3 Brain maps for GM difference between the MSAc and MSAp groups.