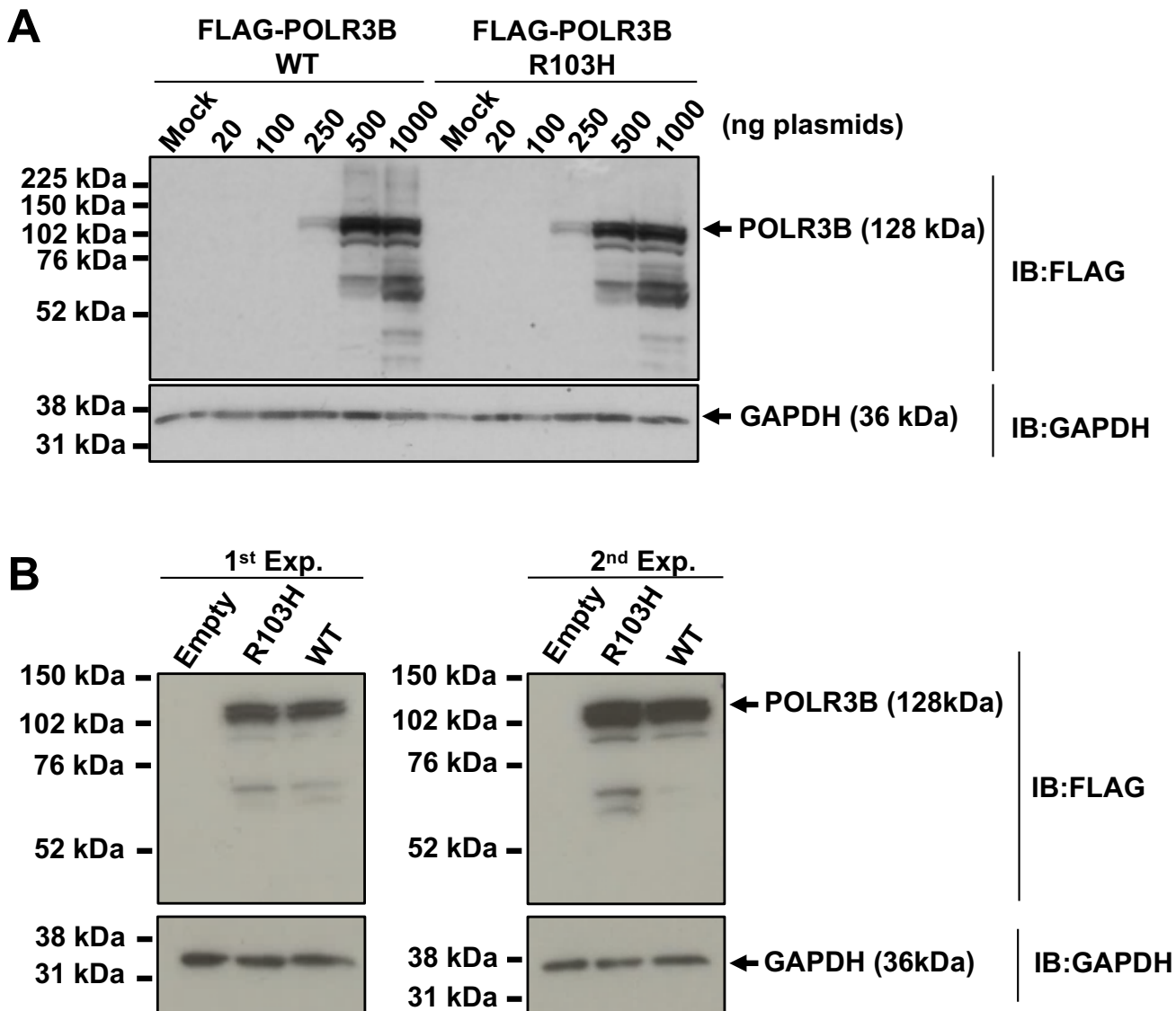


Supplementary Figure 1



Supplementary Figure 1. FLAG-POLR3B R103H expression level is similar to FLAG-POLR3B WT. A) Protein expression of the FLAG-POLR3B WT or the R103H mutant was assessed by immunoblot following transfection of various quantity of plasmid in HEK 293S as indicated and B) 500ng of either FLAG-POLR3B WT, or R103H mutant, or FLAG-empty vector expressing plasmid was transfected in HEK293S in two independent experiments. 30 μ g of whole cell protein extracts were loaded and FLAG-POLR3B WT or R103H were detected using anti-FLAG (M2) antibody. GAPDH was used as a loading control. IB: immunoblot; WT: wild-type; Empty: FLAG-empty vector negative control.