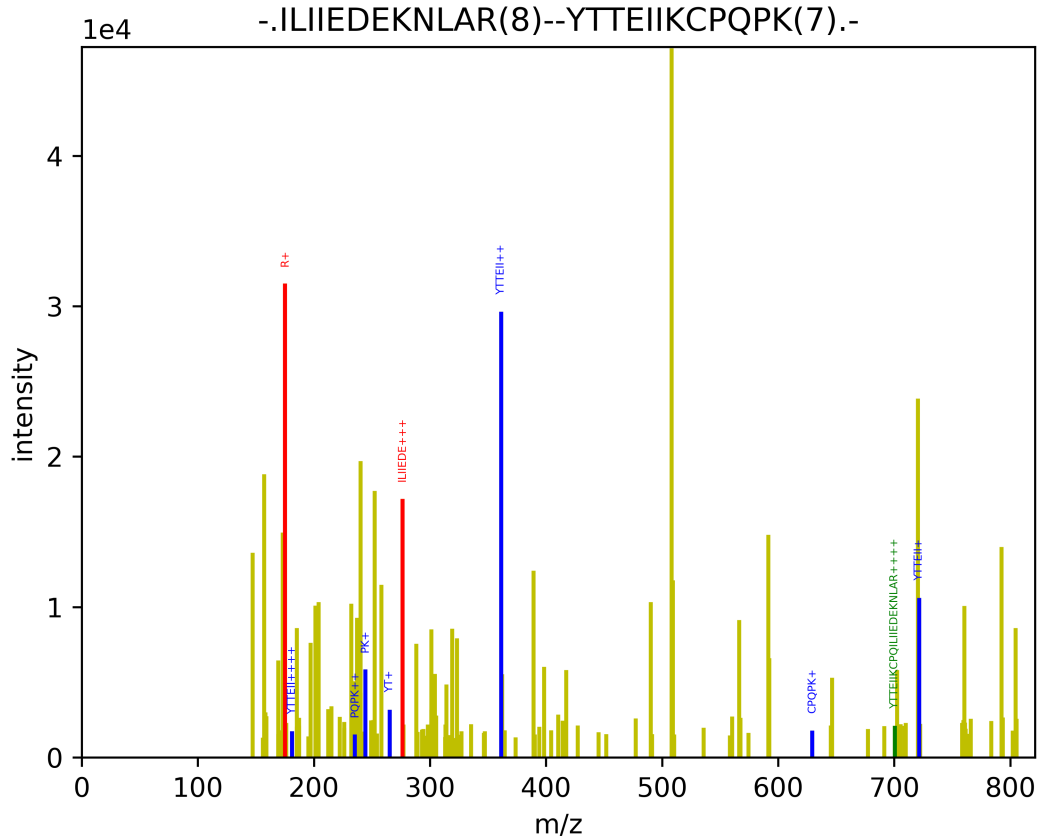
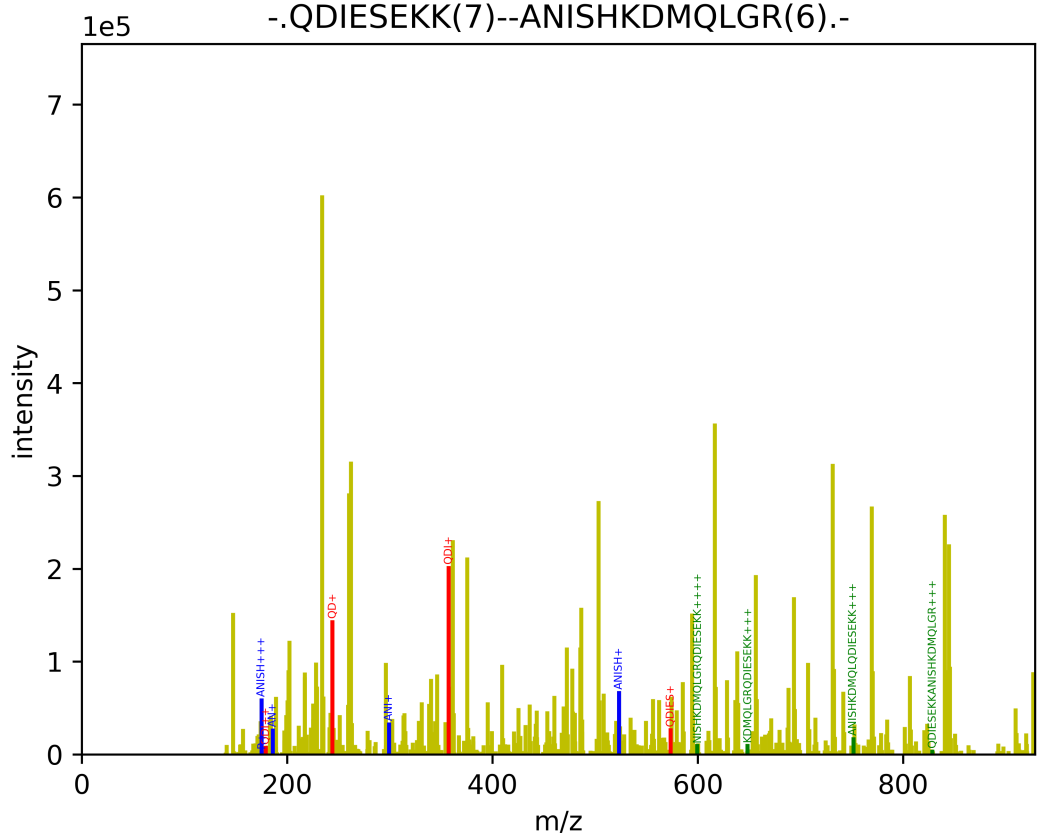


1a: csrR - C1R

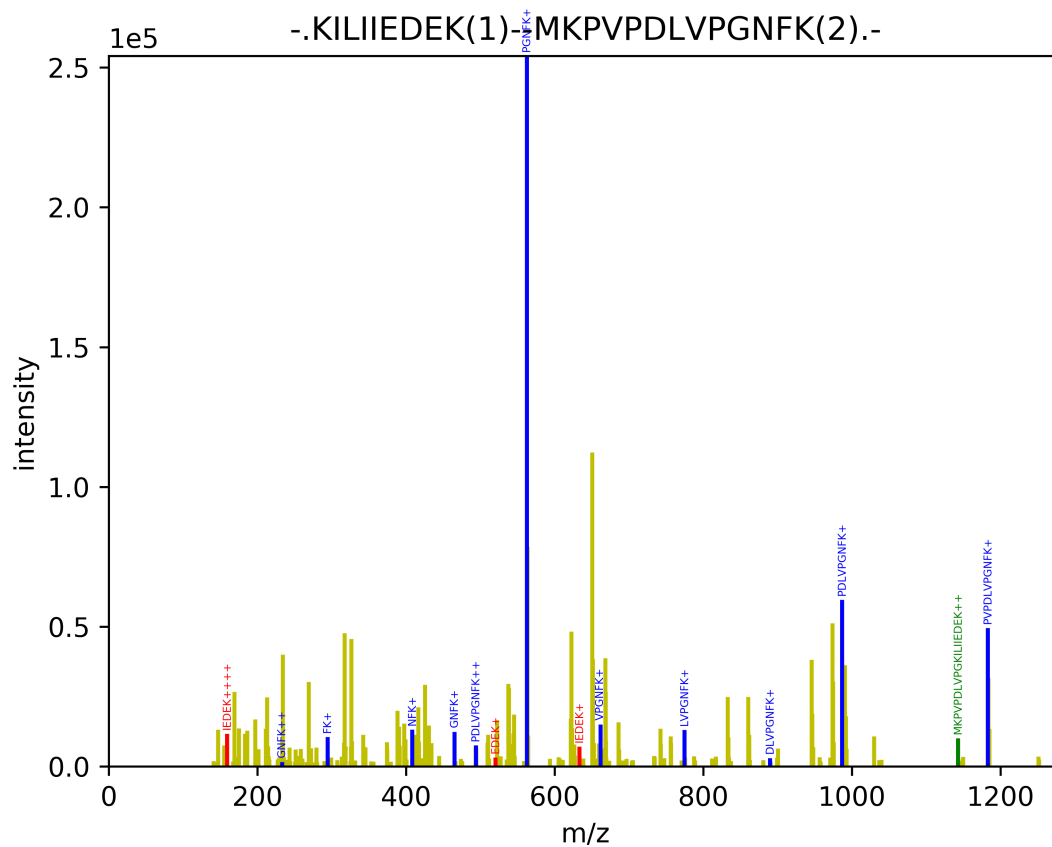


1b: csrR - C5

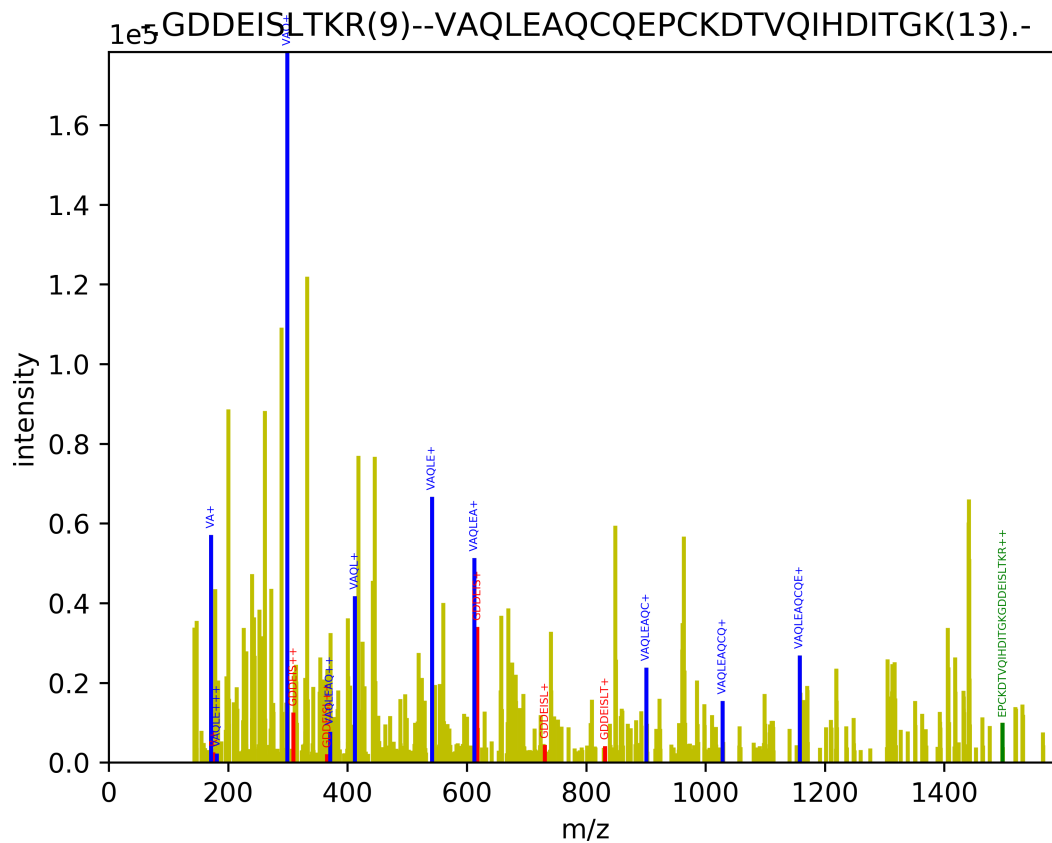


**Supplementary Data 6:** Example DDA peptide spectra of interactions identified via TX-MS in SA-DIA samples. One spectrum is shown for each streptococcal-host protein-protein pair. The red and the blue peptides represent streptococcal and host derived peptides, respectively, whereas the green signal arises from the aforementioned peptides containing an additional DSS crosslinker arm. See also Supplementary Tables 4 and 5 for details.

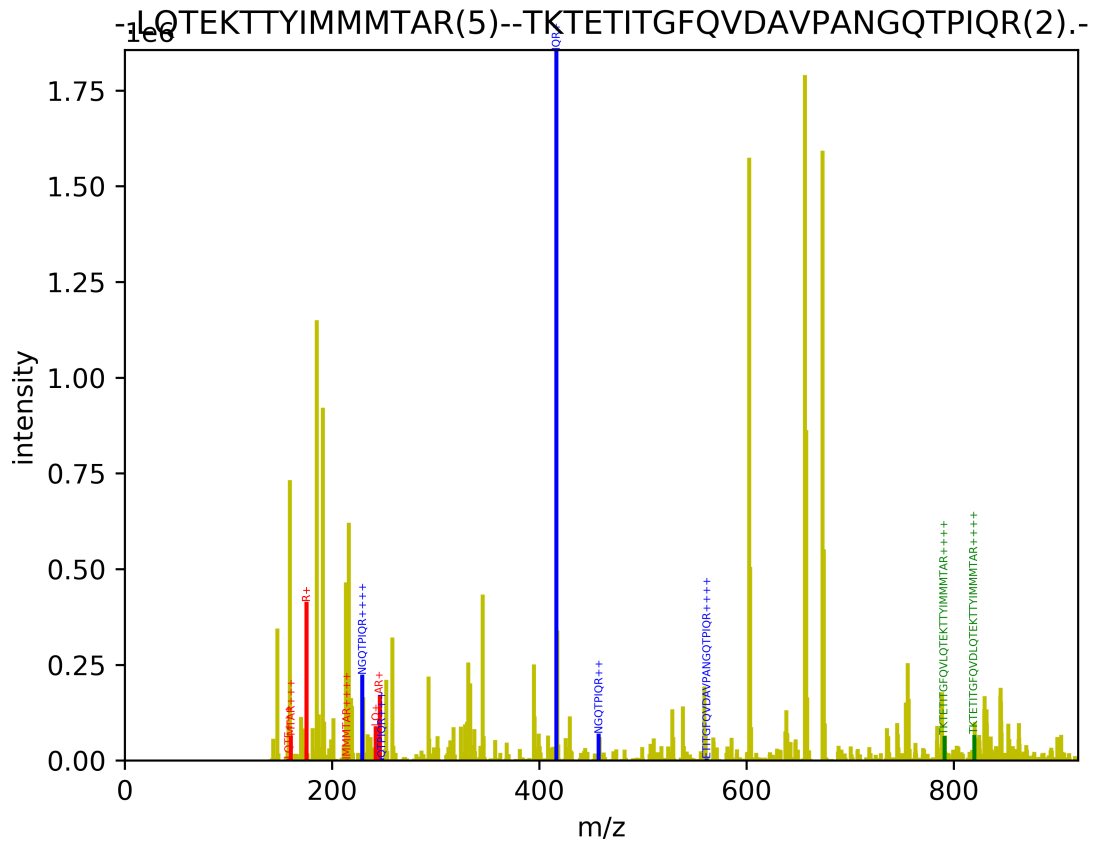
### 1c: csrR - FGA



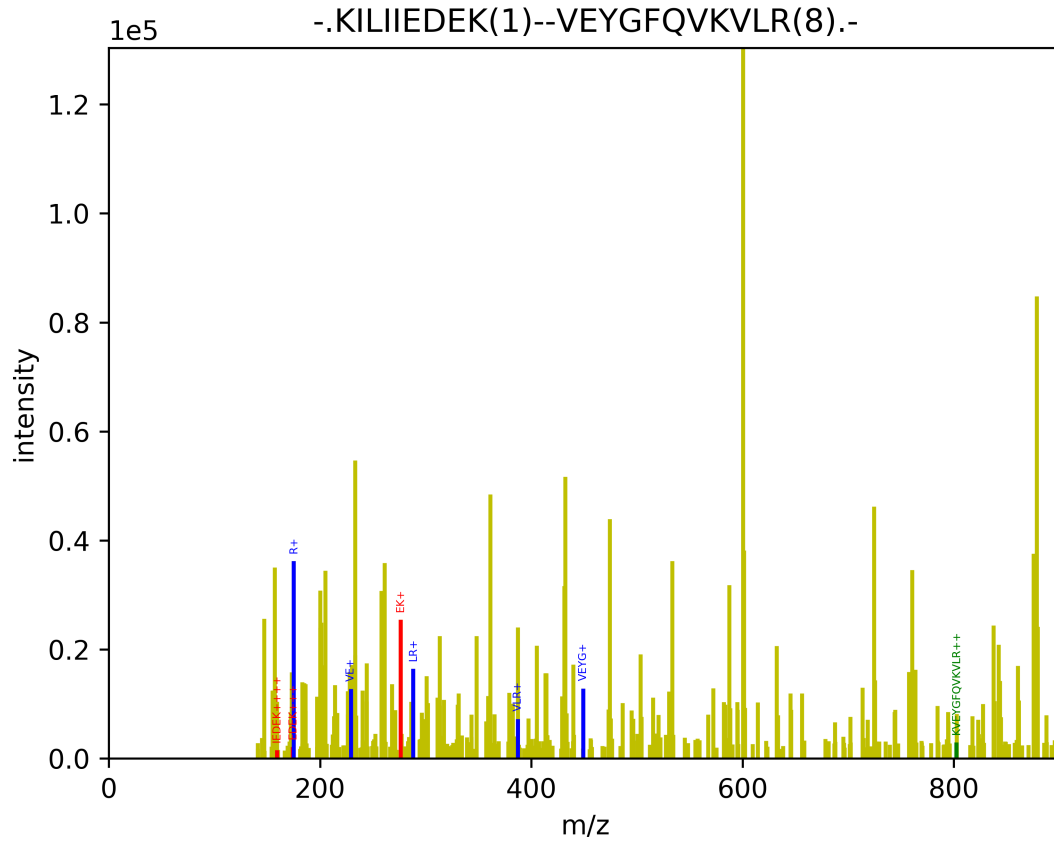
### 1d: csrR - FGG



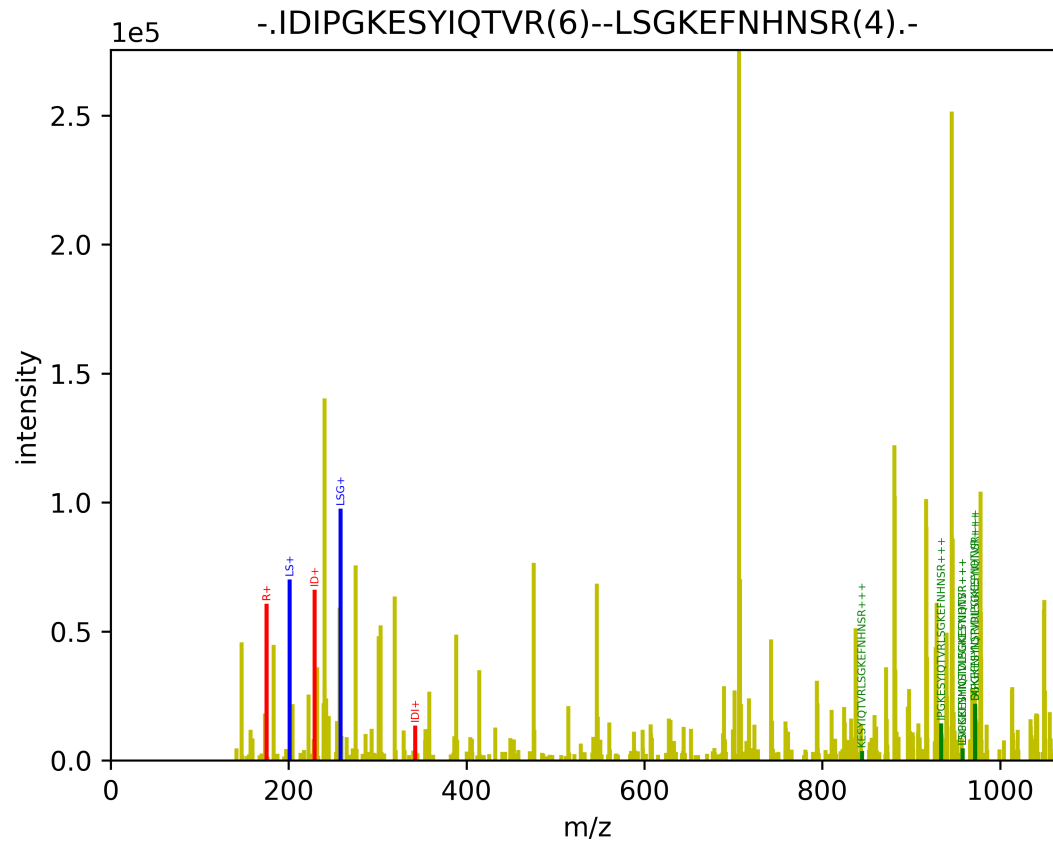
1e: csrR - FN1



1f: csrR - C4B

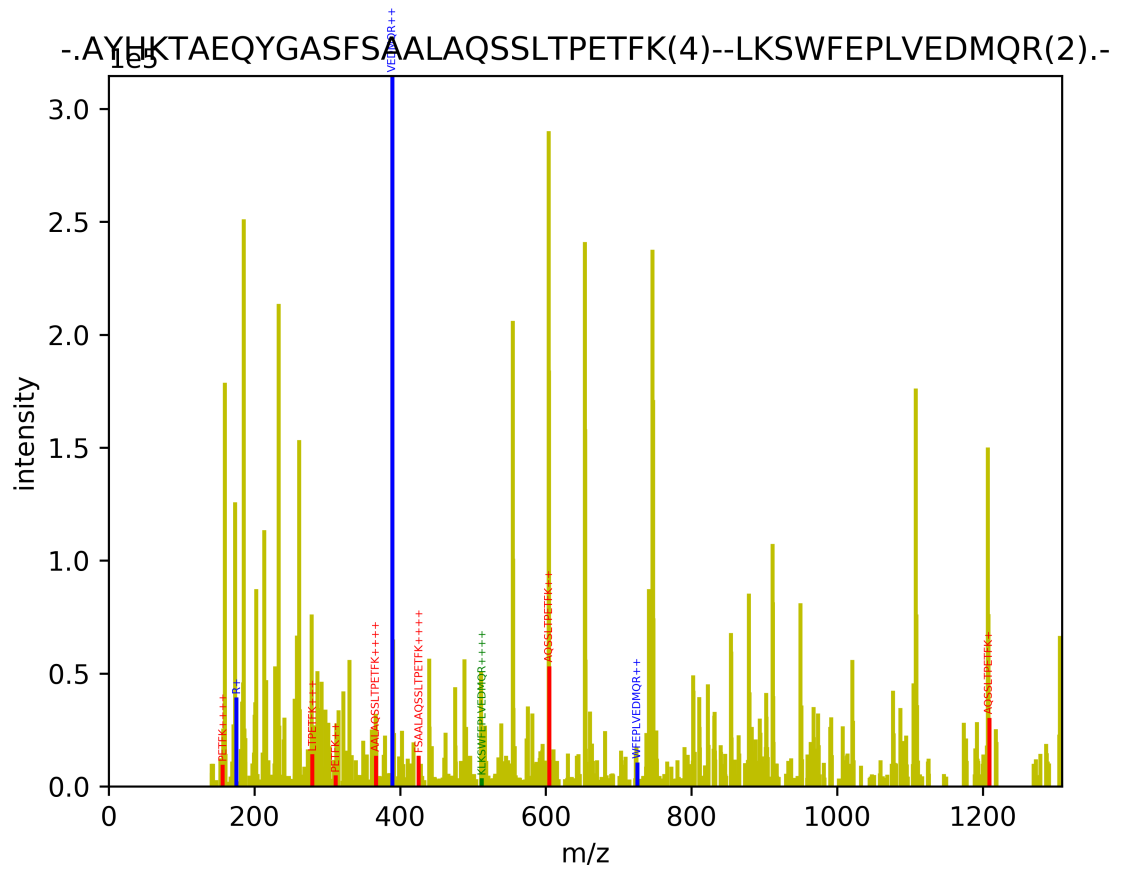


1g: csrR - CFHR5

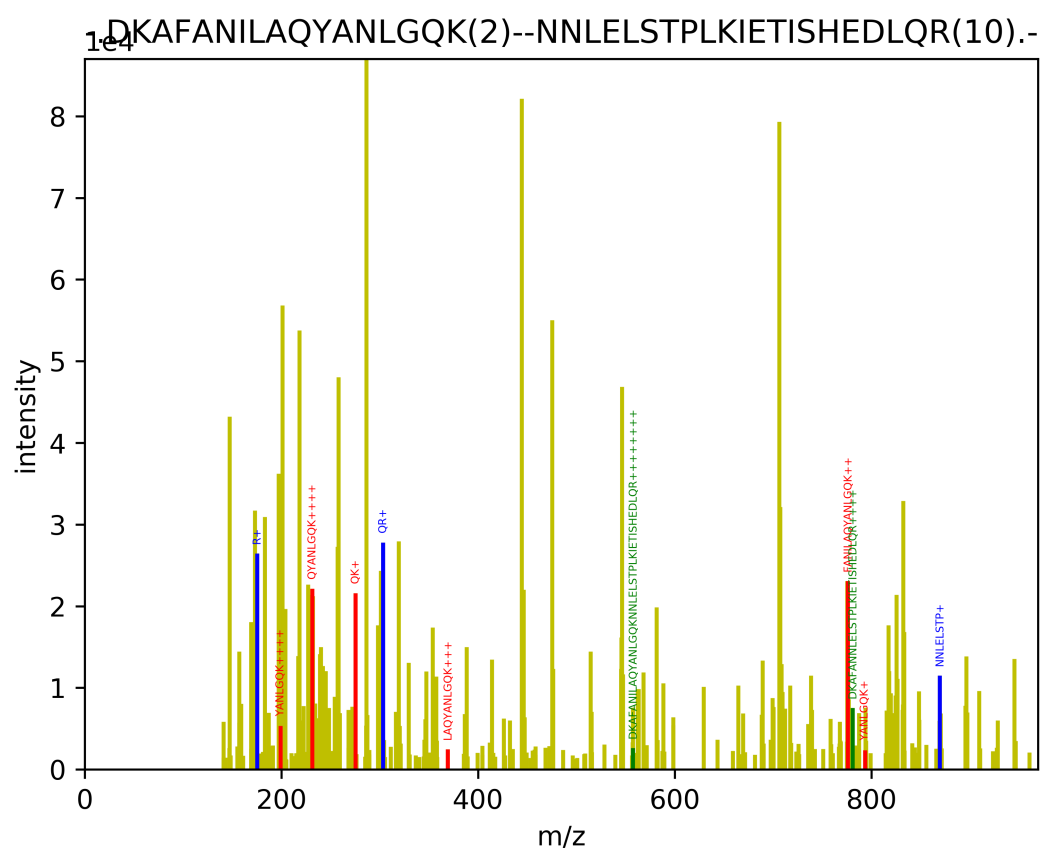




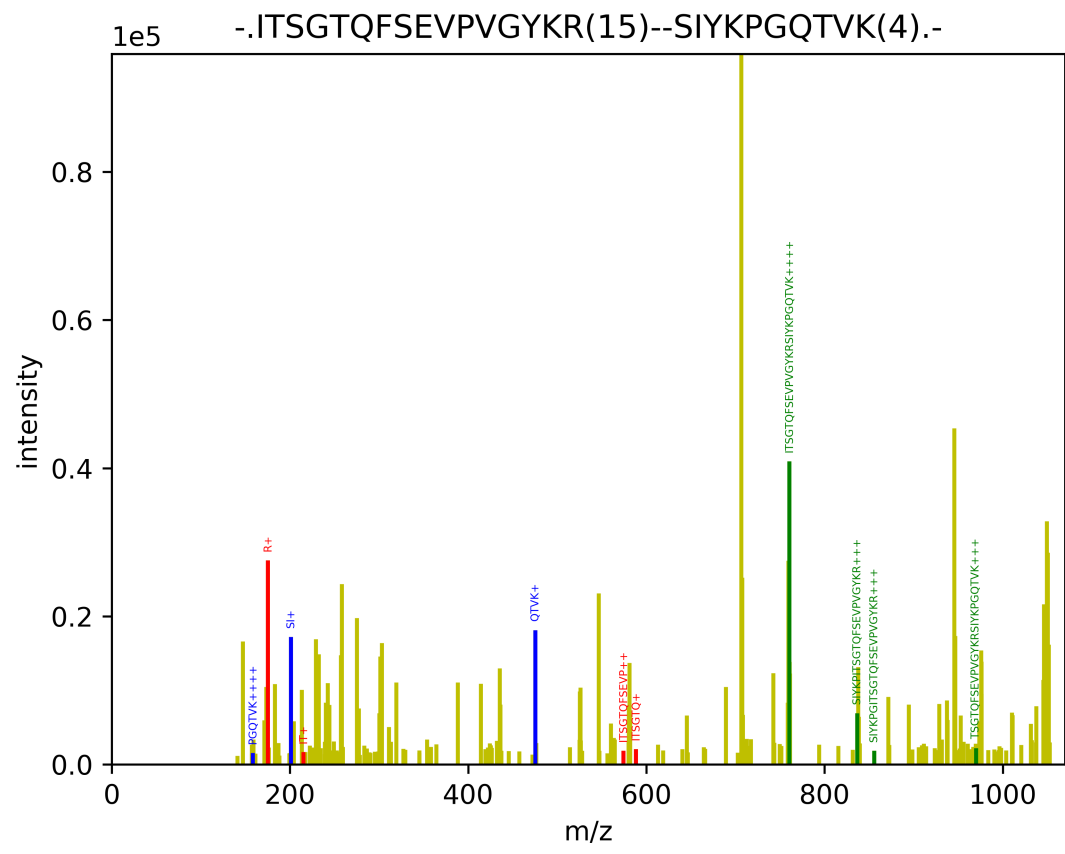
2a: prsA1 - APOE



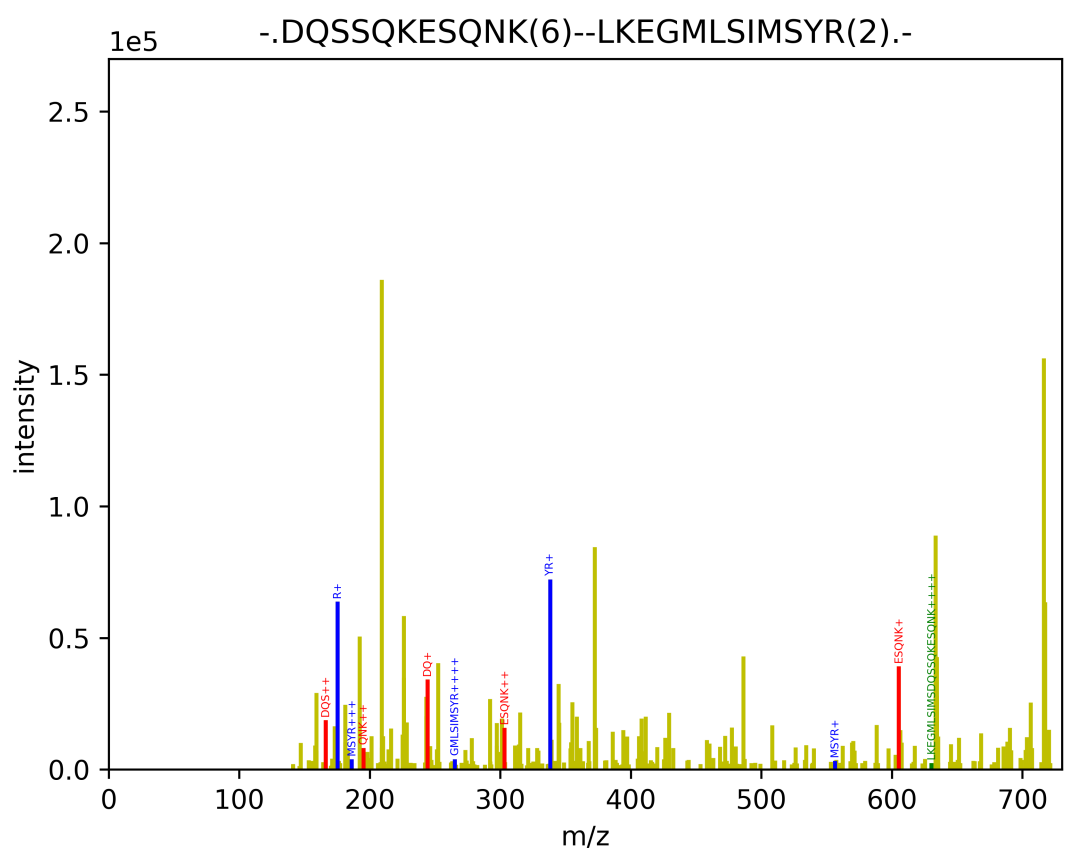
2b: prsA1 - PROS1



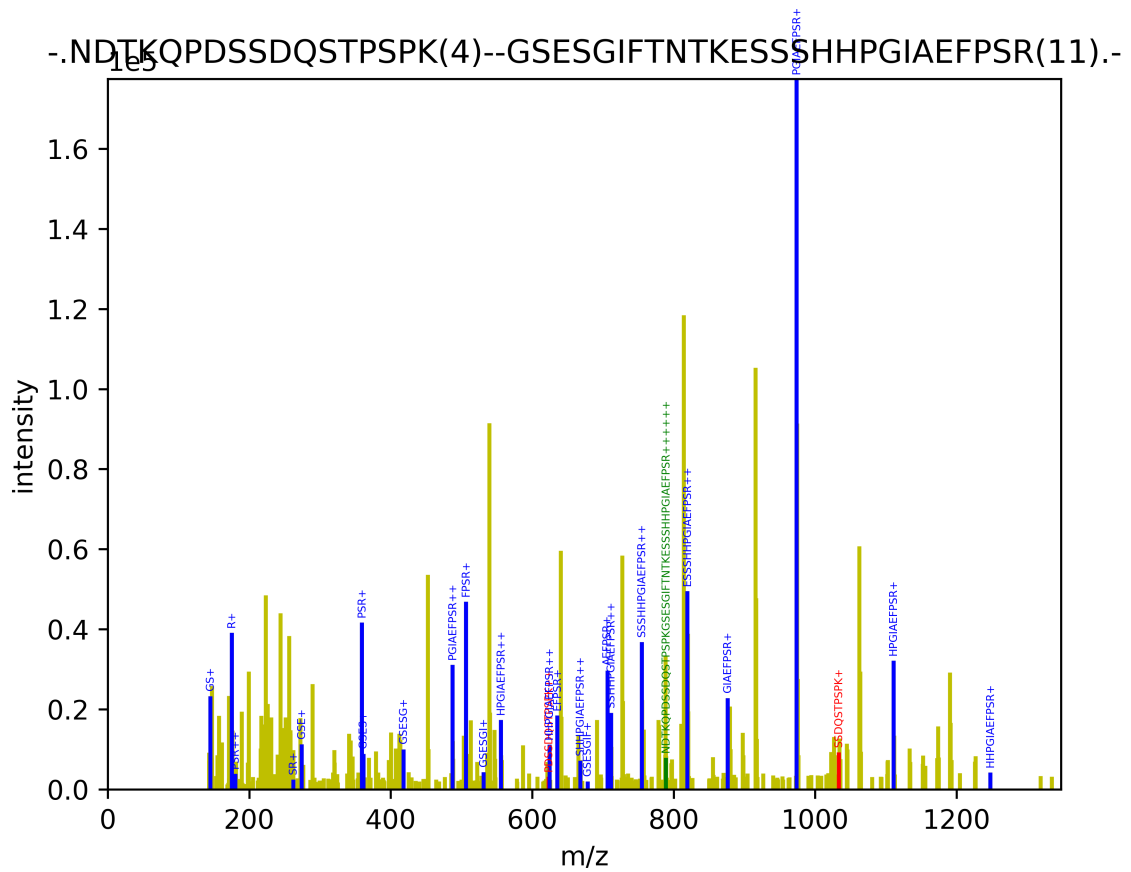
3a: ISP - A2M



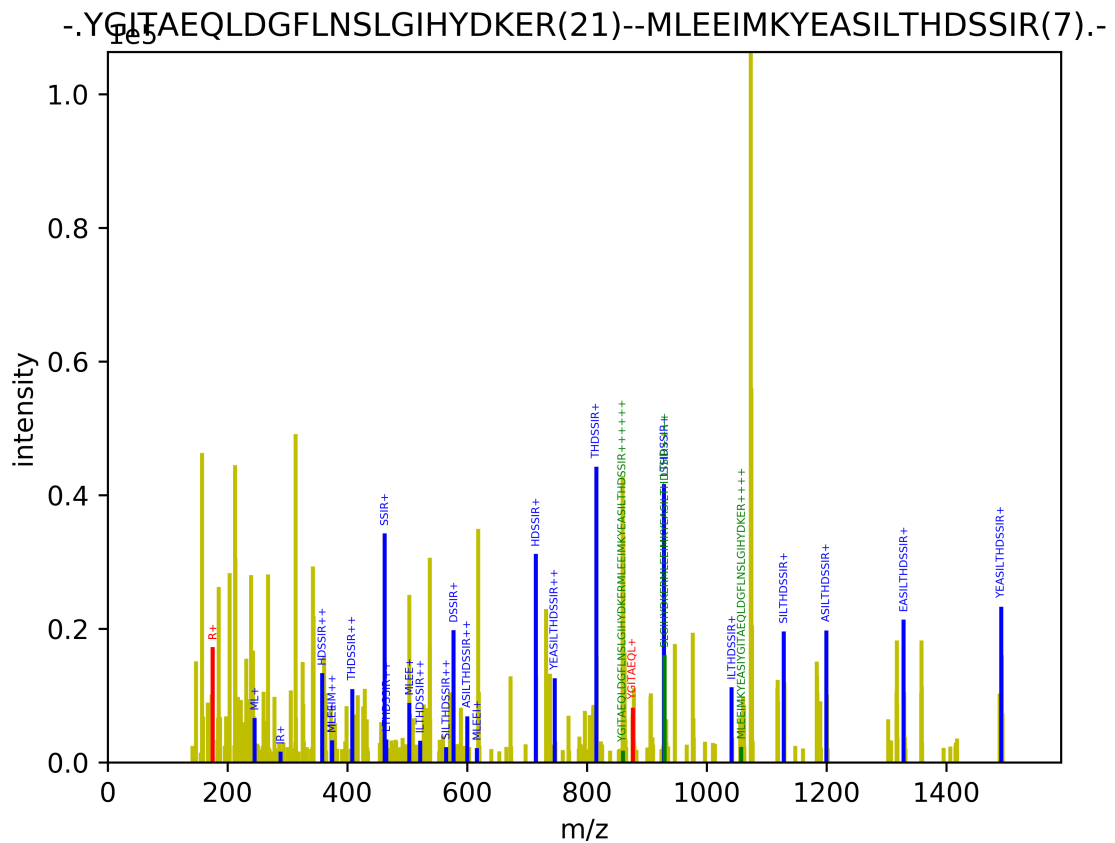
3b: ISP - C5



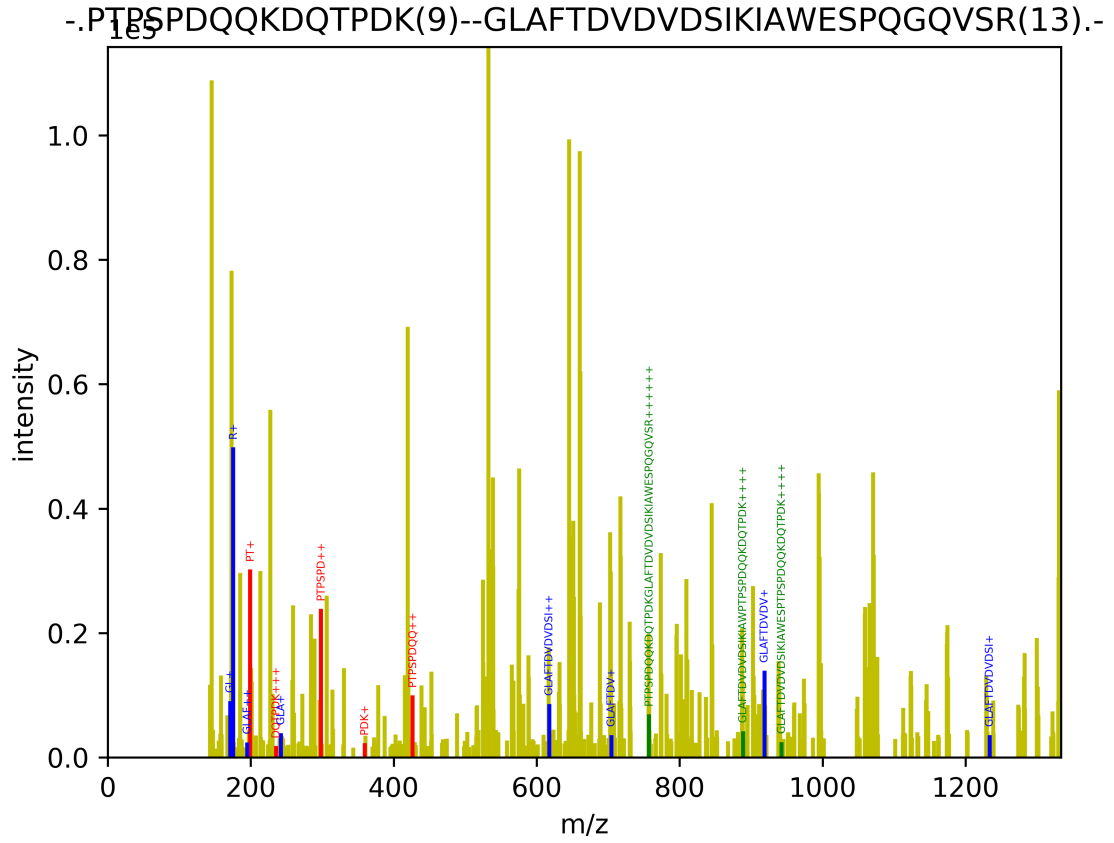
### 3c: ISP - FGA



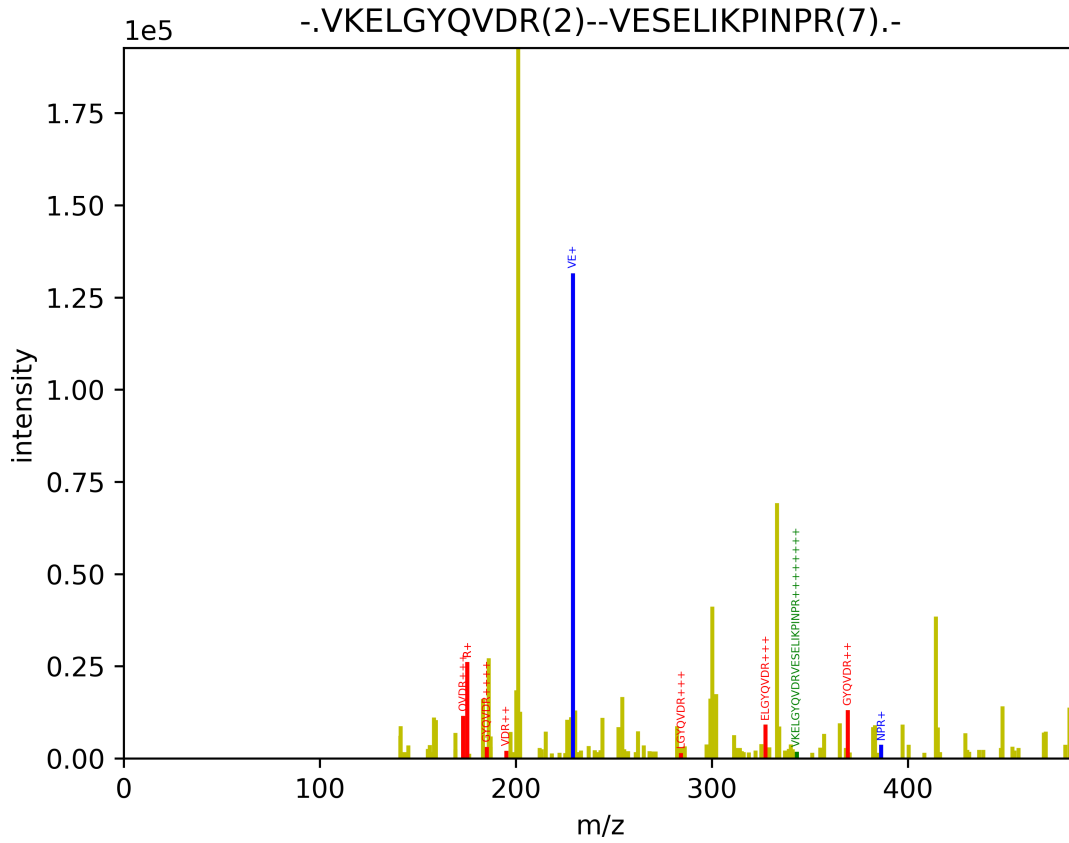
### 3d: ISP - FGG



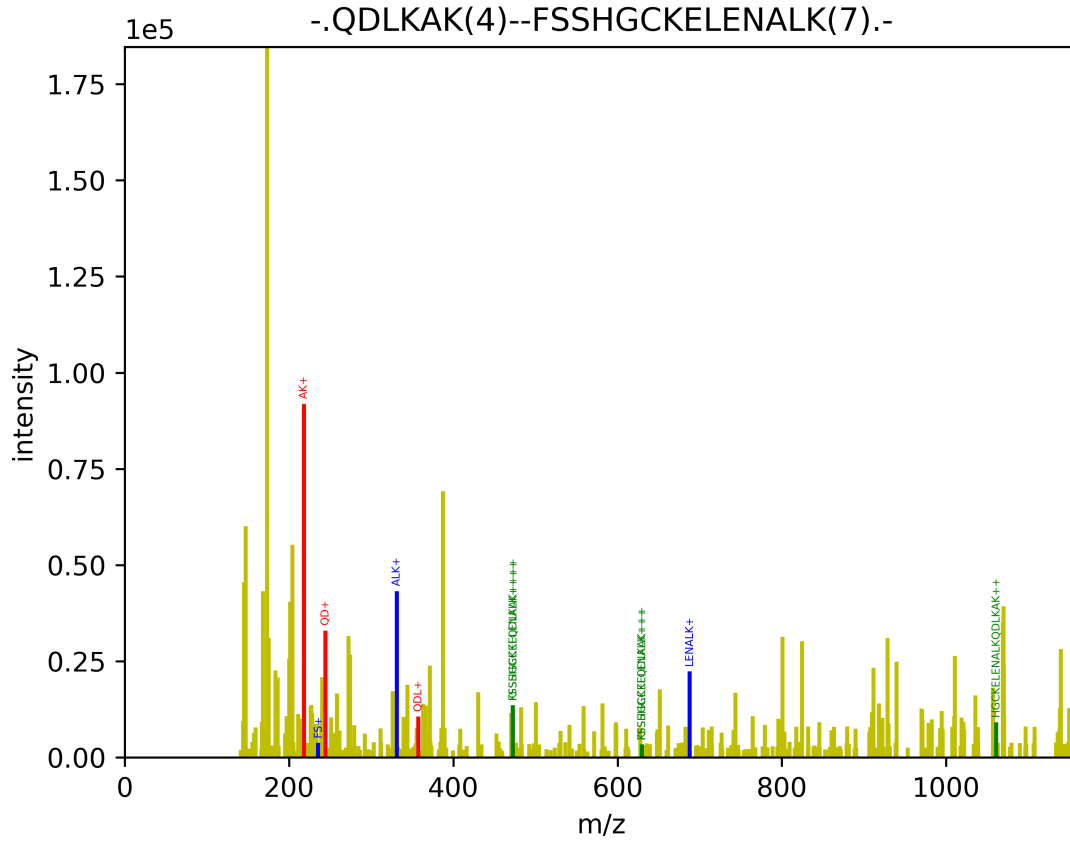
3e: ISP - FN1



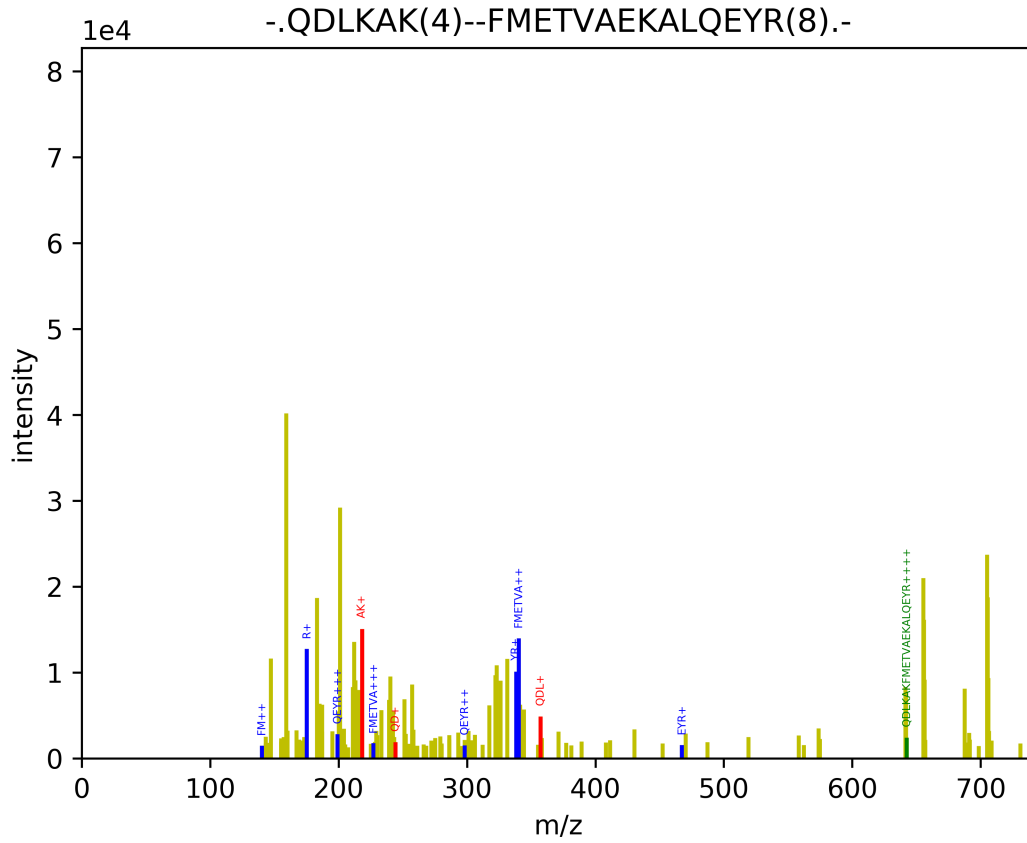
3f: ISP - PROS1



### 3g: ISP - C7



### 3h: ISP - CLU



165  
-ADIMTKLDQWIDDHGSTPEIPEHLK(6)--IGESIELTCPKGFVAGPSR(11).-

