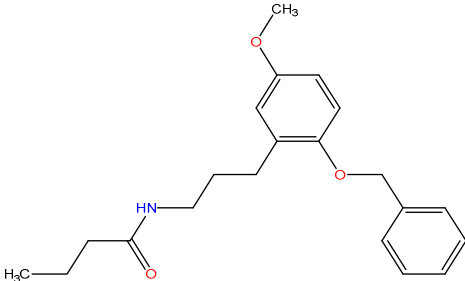
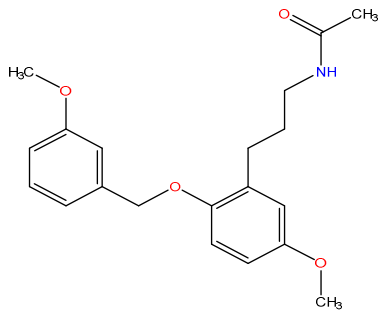
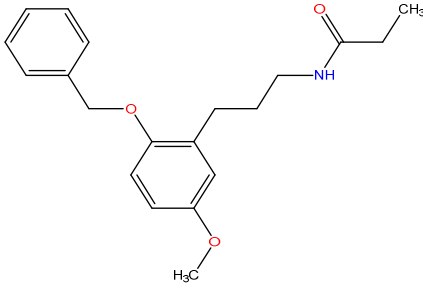
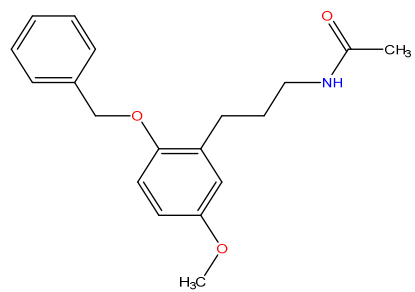


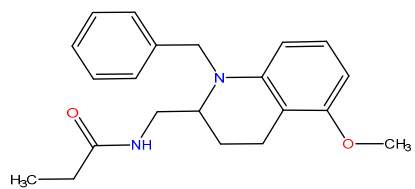
Compound_ID	MW	pKi_MT1	pKi_MT2	pKi_diff	Score_MT1	Score_MT2	Score_diff MT1-MT2
CHEMBL1088825 	341.2	5.9	12	6.1	-24	-24.3	0.3
CHEMBL1092646 	343.2	6.4	12.2	5.8	-29	-31.9	2.9
CHEMBL1091161 	327.2	6.6	12.3	5.7	-29	-34.1	5.2

CHEMBL1091160



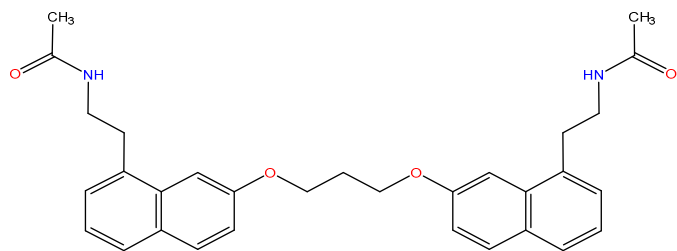
313.2 6.1 10.3 4.3 -26.8 -32.5 5.7

CHEMBL3612464



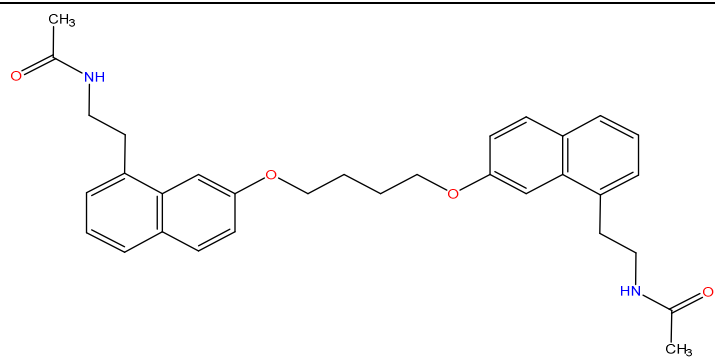
338.2 7.8 12 4.2 -17.3 -21.2 3.9

CHEMBL429392



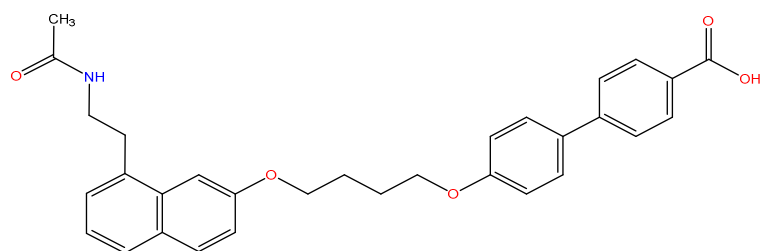
498.3 9.3 7 -2.4 -29.6 -4.7 -24.9

CHEMBL14453



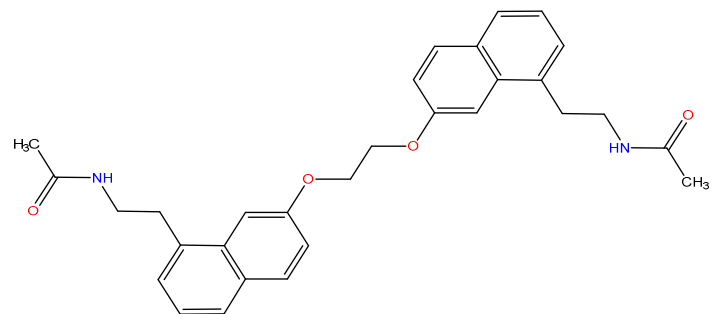
512.3 9.2 7.1 -2.1 -30.4 -1.7 -28.7

CHEMBL1094546



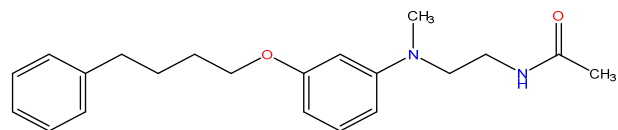
496.2 9.3 7.3 -2 -27 1.4 -28.4

CHEMBL14514



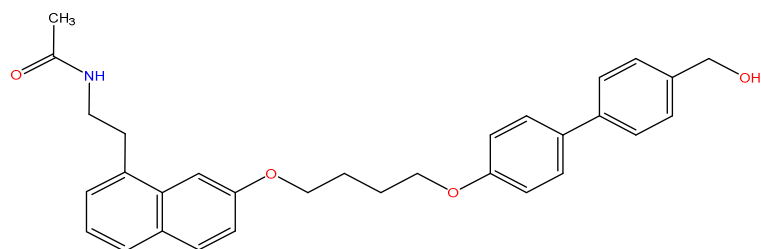
484.2 8.7 6.7 -2 -26.5 -3.2 -23.3

CHEMBL3260987



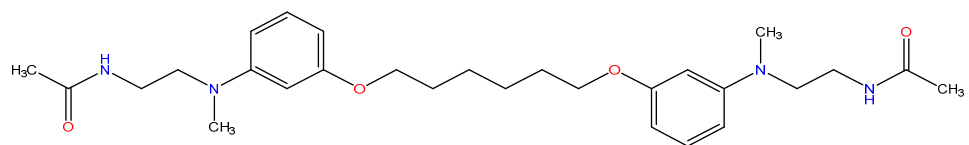
340.2 8.9 7 -1.9 -32.2 -23.6 -8.6

CHEMBL1094212



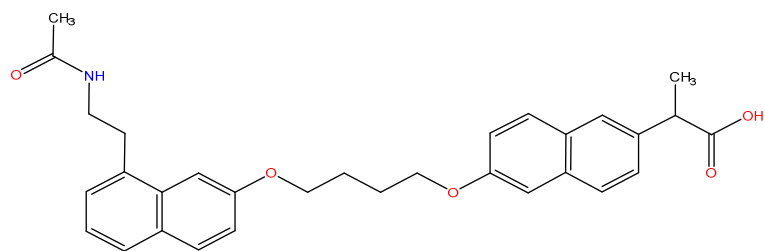
483.2 10.1 8.2 -1.9 -25.1 -6.1 -19

CHEMBL1813321



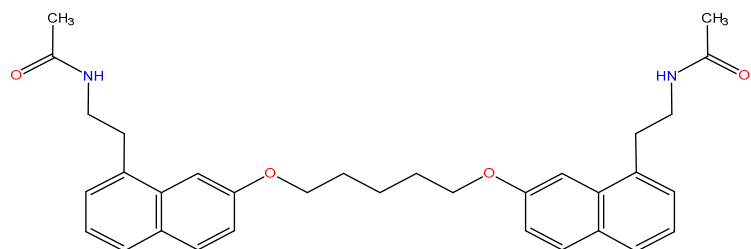
498.3 8.5 6.7 -1.7 -31.9 2.5 -34.3

CHEMBL1095505



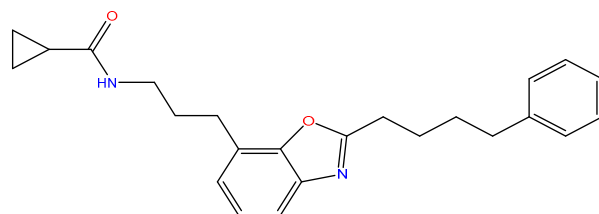
497.2 8.8 7.2 -1.6 -27.8 7.2 -35

CHEMBL273787



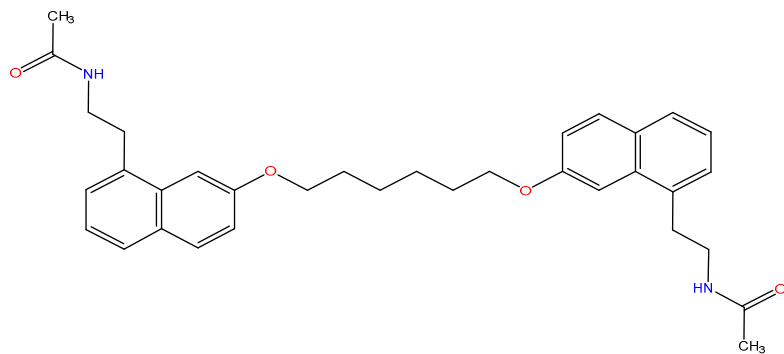
526.3 10.3 8.8 -1.5 -38.6 -14.6 -24

CHEMBL334079



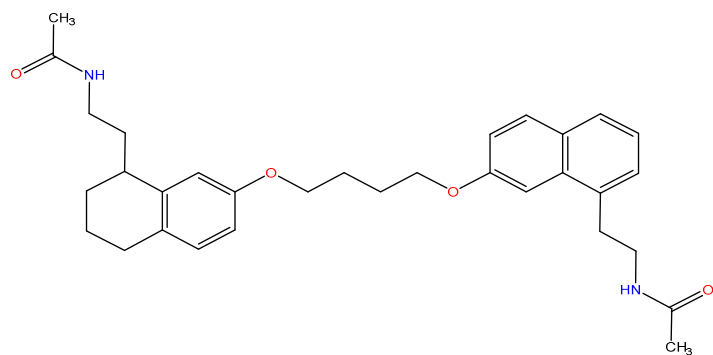
376.2 9.2 7.7 -1.5 -22.8 -12.6 -10.2

CHEMBL13985



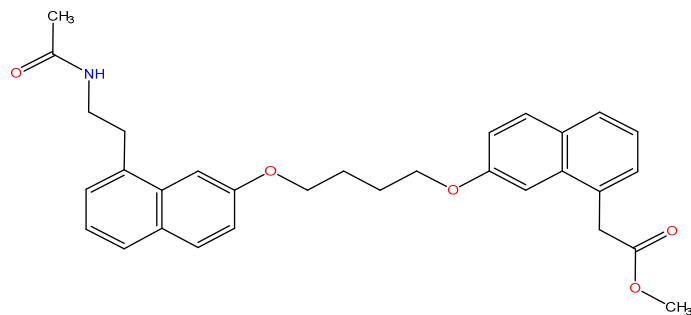
540.3 10.1 8.6 -1.5 -30.7 -15.1 -15.6

CHEMBL1095831



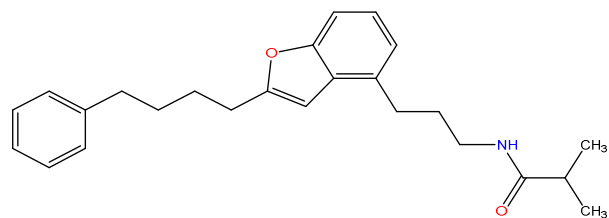
516.3 9.6 8.2 -1.4 -25.8 -10.2 -15.7

CHEMBL1095196



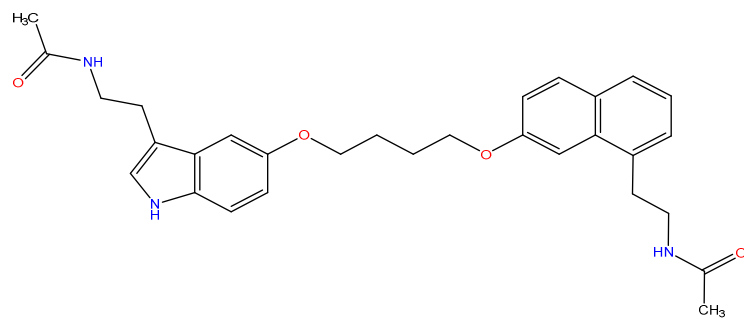
499.2 10.2 8.7 -1.4 -34 -1.1 -32.9

CHEMBL187186



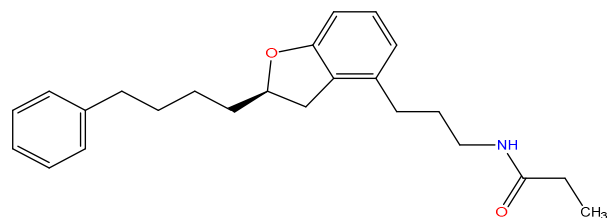
377.2 8.4 7.1 -1.4 -20.6 -12.8 -7.8

CHEMBL1095522



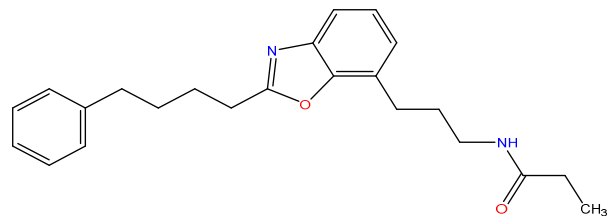
501.3 8.4 7.1 -1.3 -31.8 -9.9 -21.8

CHEMBL178678



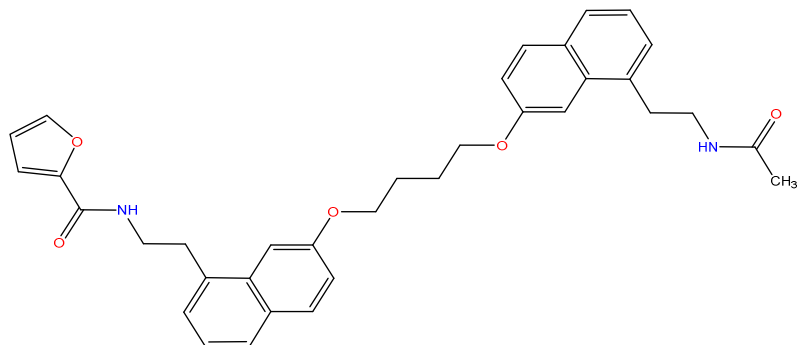
365.2 9 7.7 -1.3 -24.5 -9.3 -15.2

CHEMBL330969



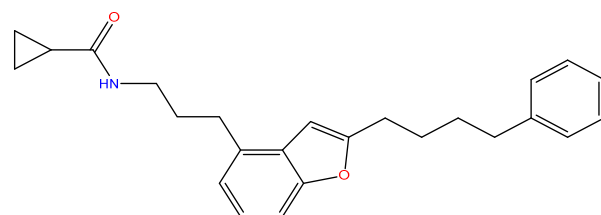
364.2 9.1 7.9 -1.3 -24.5 -11.4 -13.1

CHEMBL1096991



564.3 9.2 7.9 -1.3 -32.7 8.3 -41

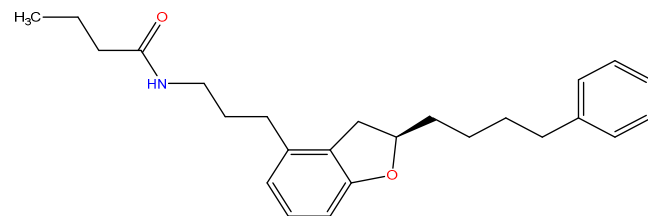
CHEMBL183846



375.2 8.2 7 -1.2 -20 -12.2 -7.8

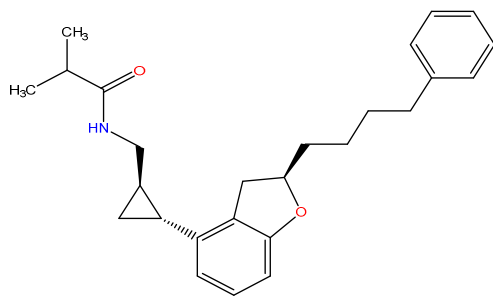


CHEMBL368886



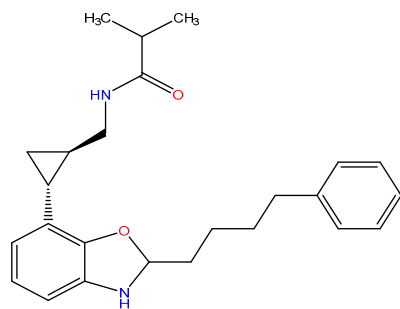
379.3 8.7 7.5 -1.2 -24.7 -8.2 -16.5

CHEMBL361854



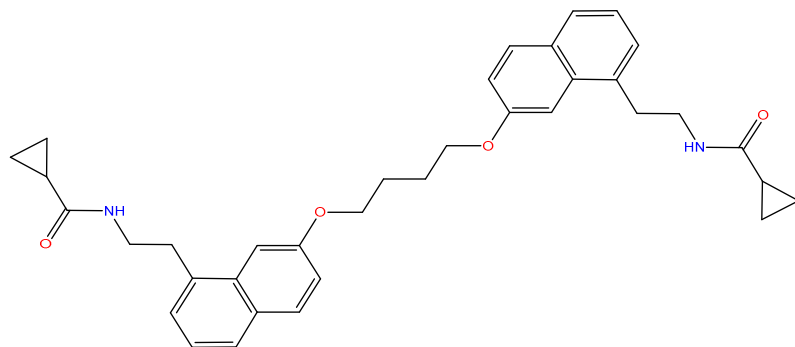
391.3 8.2 7.1 -1.2 -24.7 -7.2 -17.6

CHEMBL18845



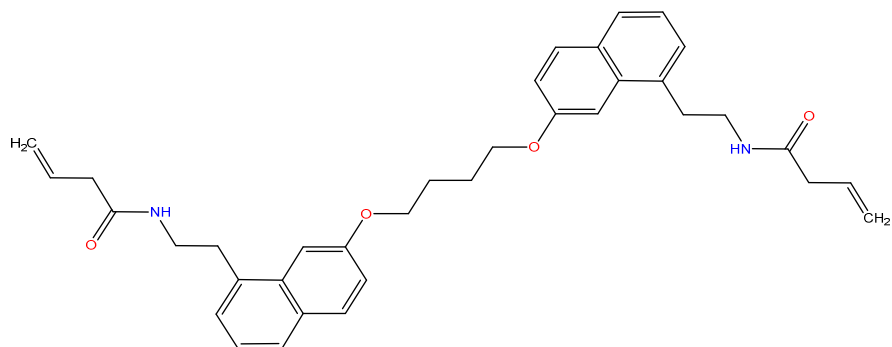
392.2 9.9 8.7 -1.2 -19.1 -11.4 -7.8

CHEMBL1097314



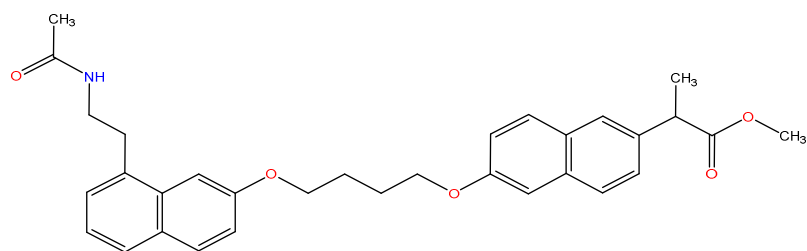
564.3 9 7.9 -1.1 -21.8 -15.3 -6.4

CHEMBL1097315



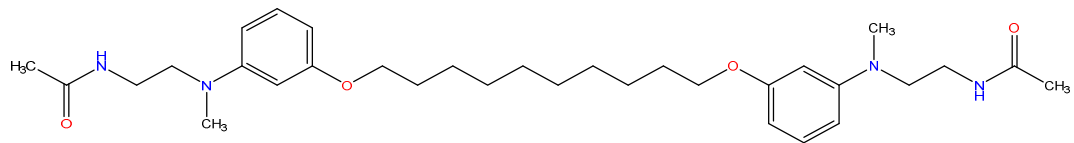
564.3 9 8 -1.1 -33.3 -15.2 -18

CHEMBL1095197



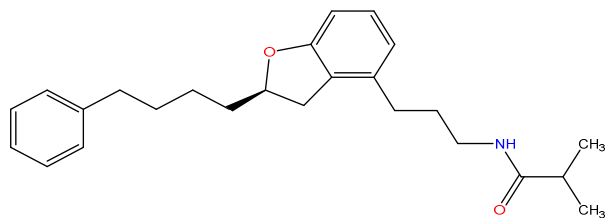
512.2 9.4 8.4 -1.1 -34.5 -6.2 -28.2





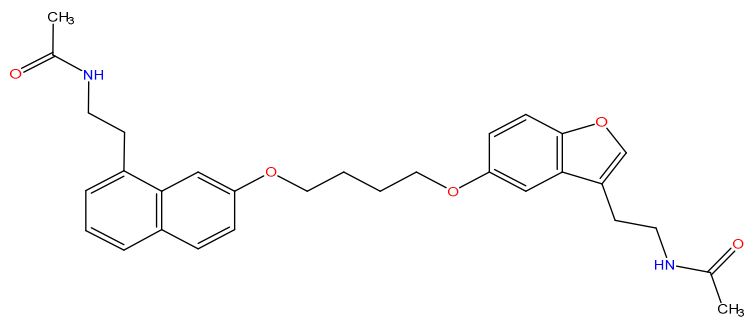
CHEMBL1813323

554.4 8.4 7.4 -1 -25.1 -7.2 -18



CHEMBL181687

379.3 8.4 7.4 -1 -22.9 -8.5 -14.4

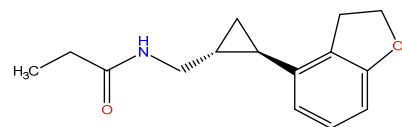


CHEMBL1097496

502.2 8.9 7.9 -1 -32.7 -17 -15.7

---

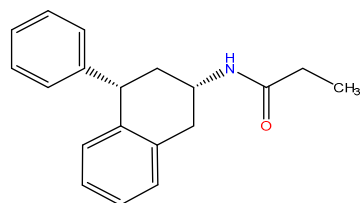
CHEMBL2103822



245.1 7.8 7.5 -0.3 -21.4 -21.9 0.5

---

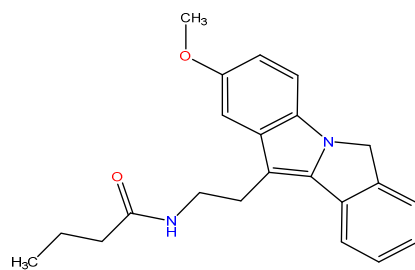
CHEMBL1946402



279.2 7 9.2 2.2 -23.8 -25.7 1.9

---

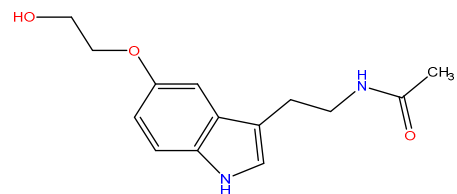
CHEMBL10009



348.2 8.4 10.3 1.9 -21.1 -30.3 9.2

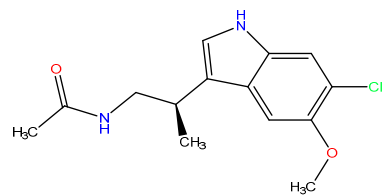
---

CHEMBL126809



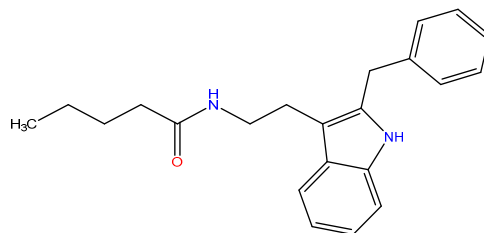
262.1 7.7 7.1 -0.6 -24.9 -19.3 -5.6

SCHEMBL678611  
(TIK-301)



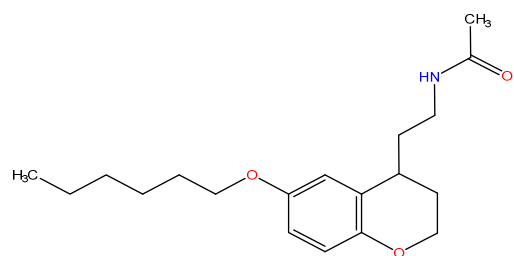
280.1 10.1 10.4 0.3 -24.7 -23 -1.7

CHEMBL1327247  
(DH 97)



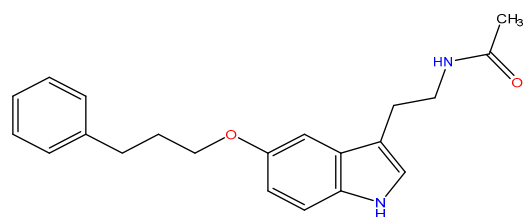
334.2 6.08 8.03 1.95 -18.4 -26.8 8.4

CHEMBL3260984



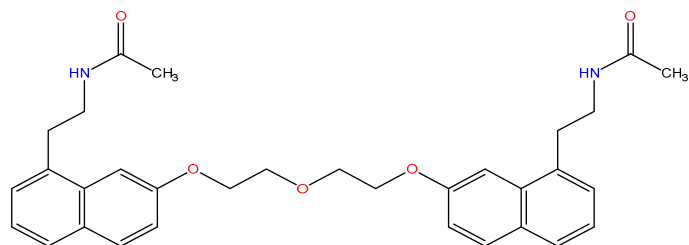
319.2 8.5 7.7 -0.8 -17 ND ND

CHEMBL3260985



336.2 8.4 7.3 -1.1 -25.2 ND ND

CTL 01-05-B-A05



528.6 9.12 7.24 -1.88 -32.25 -19.37 -12.8