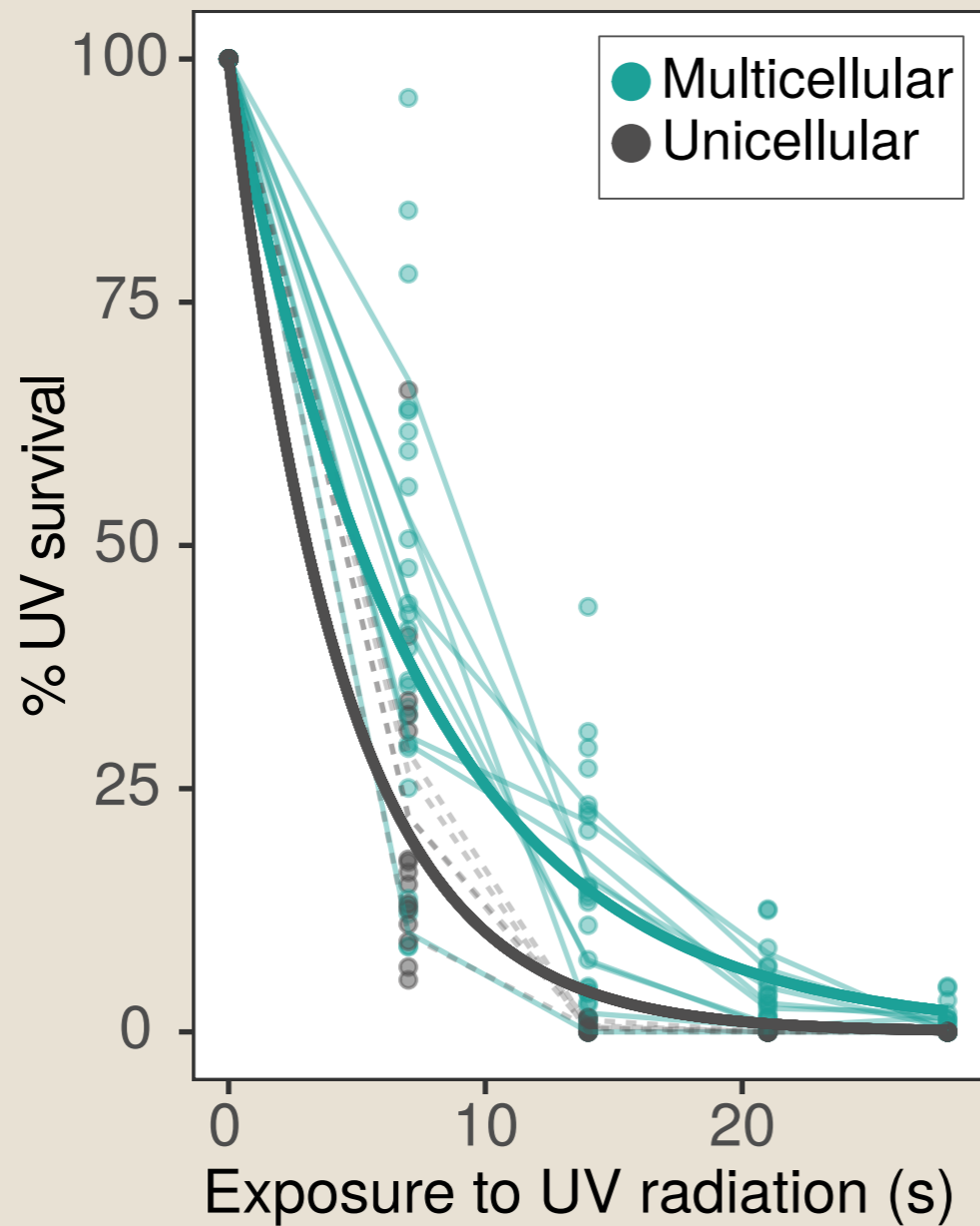
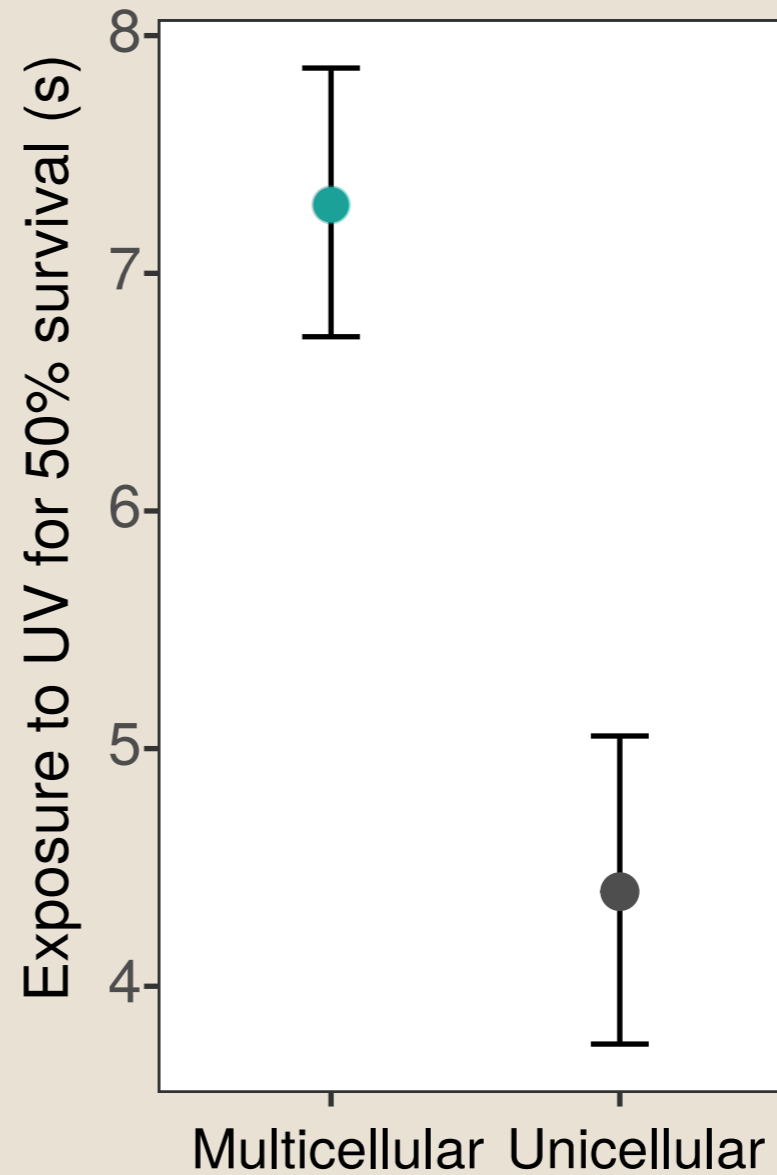


Multicellularity offers protection against UV

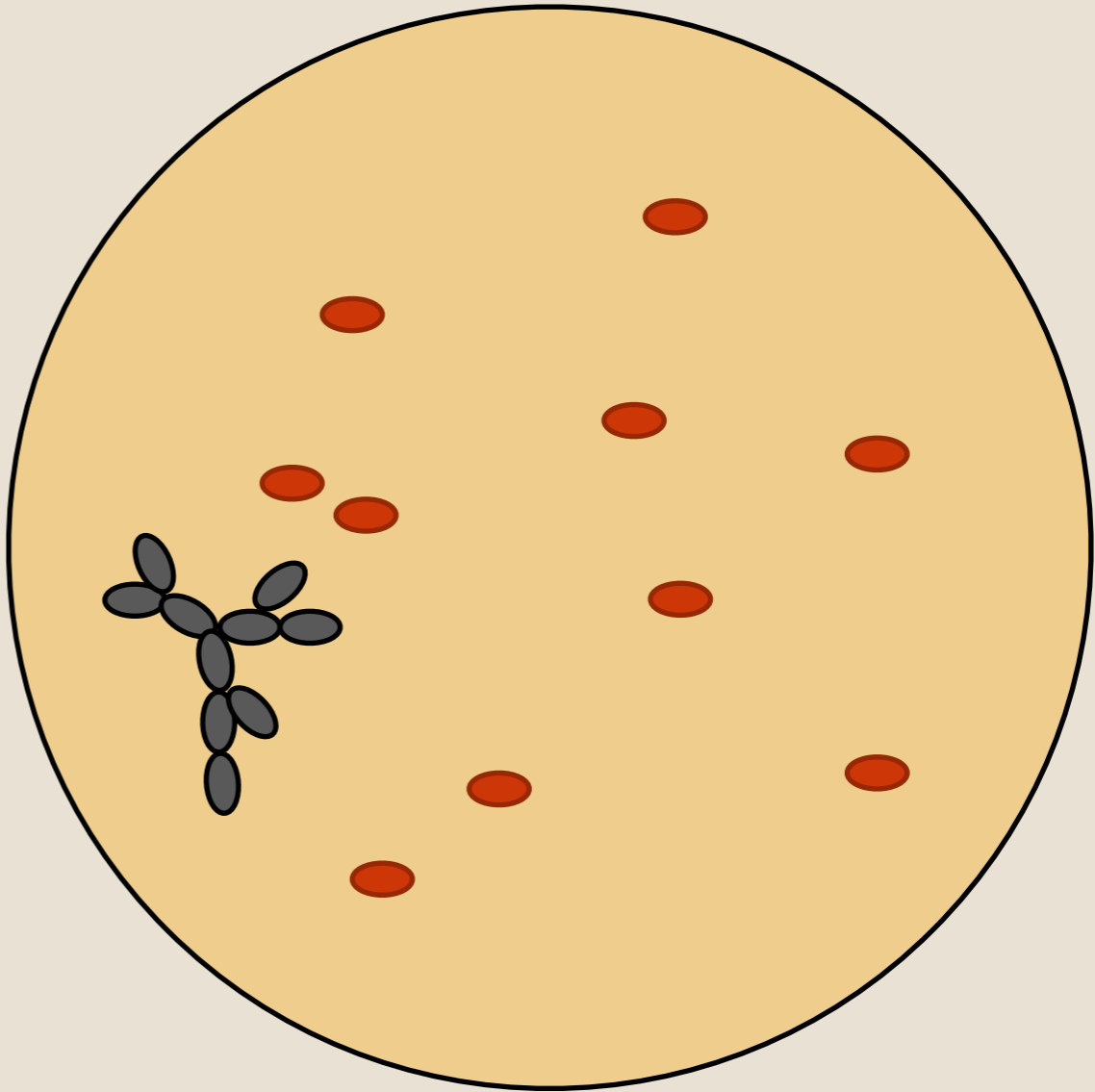
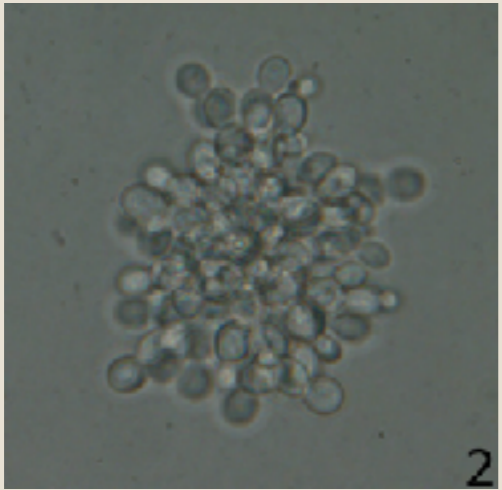
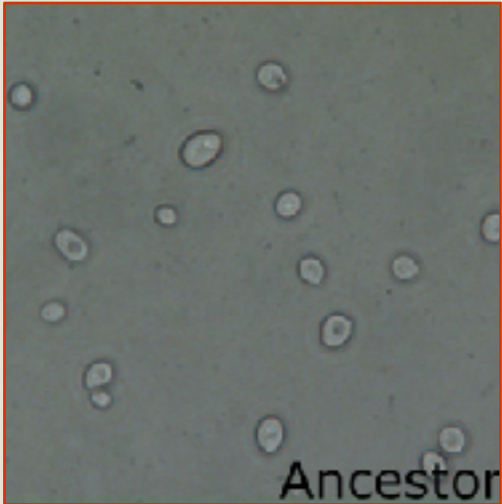
A.



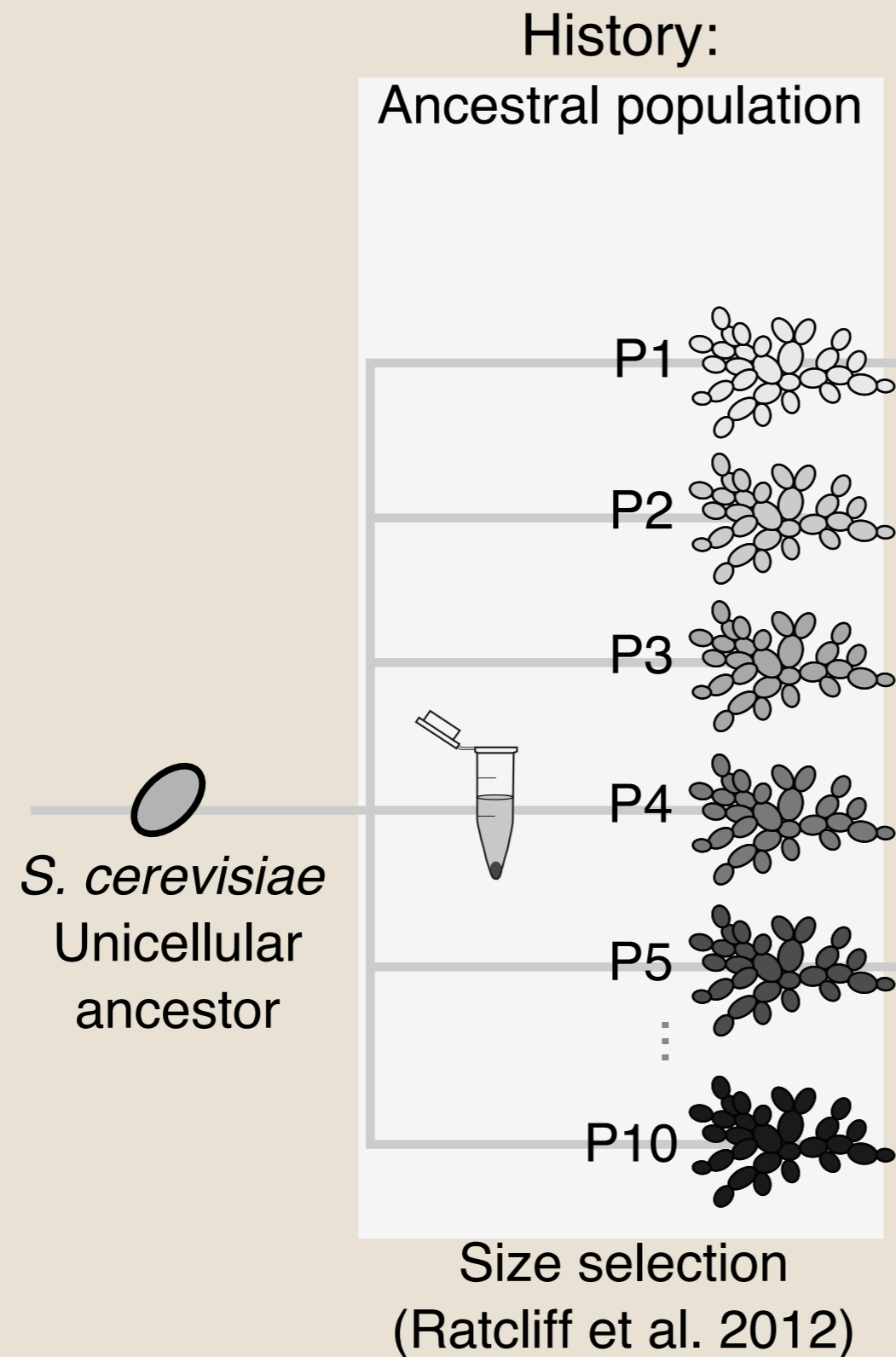
B.



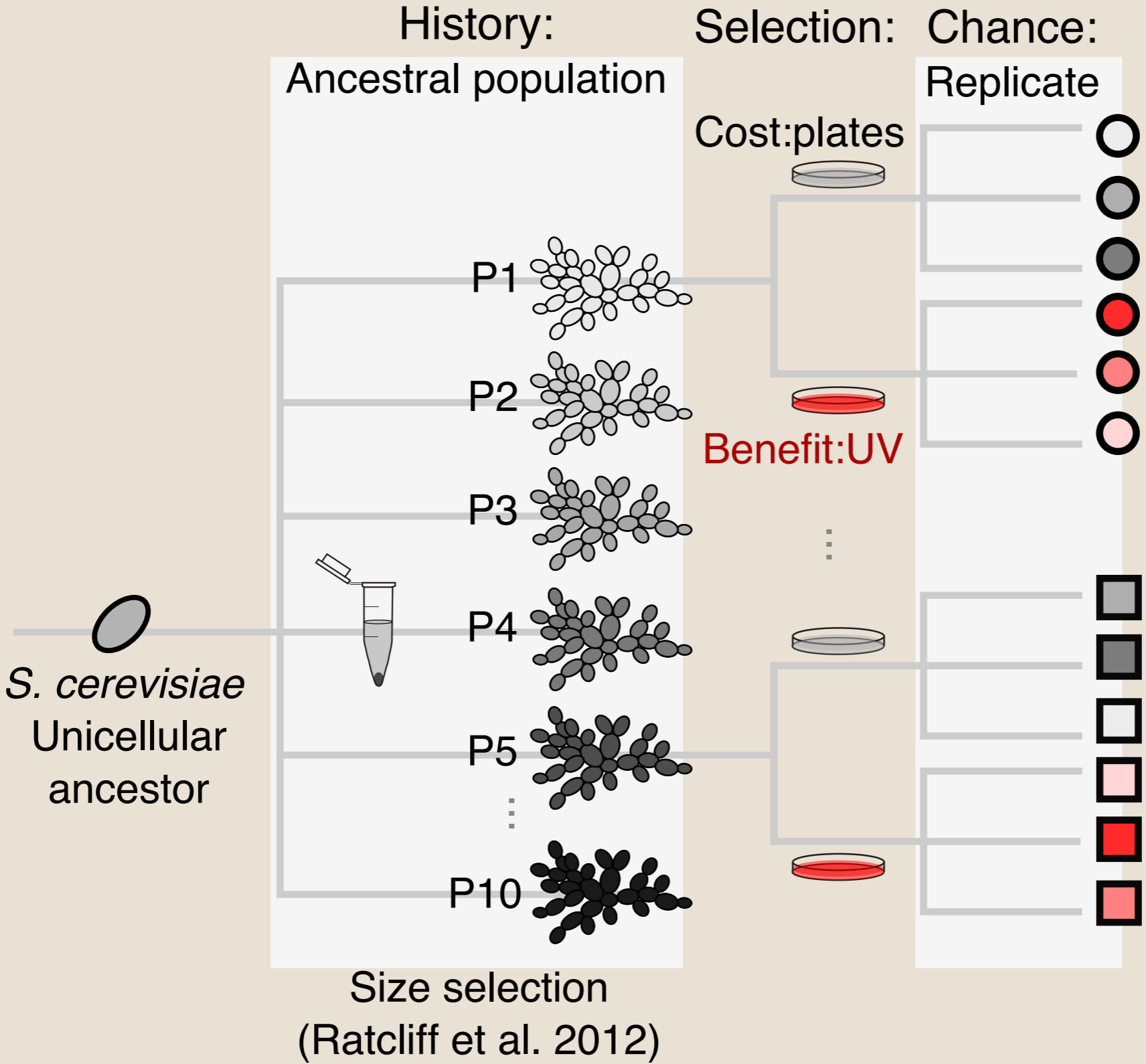
But local competition is a major constraint on multicellularity in spatially structured environments



Using a system that recently evolved multicellularity

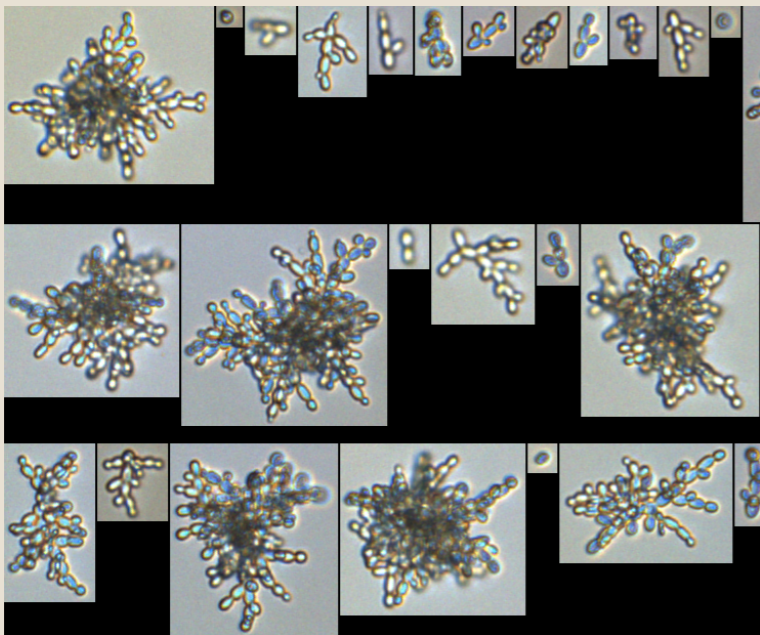


We can address the relative roles of history, adaptation, and chance.

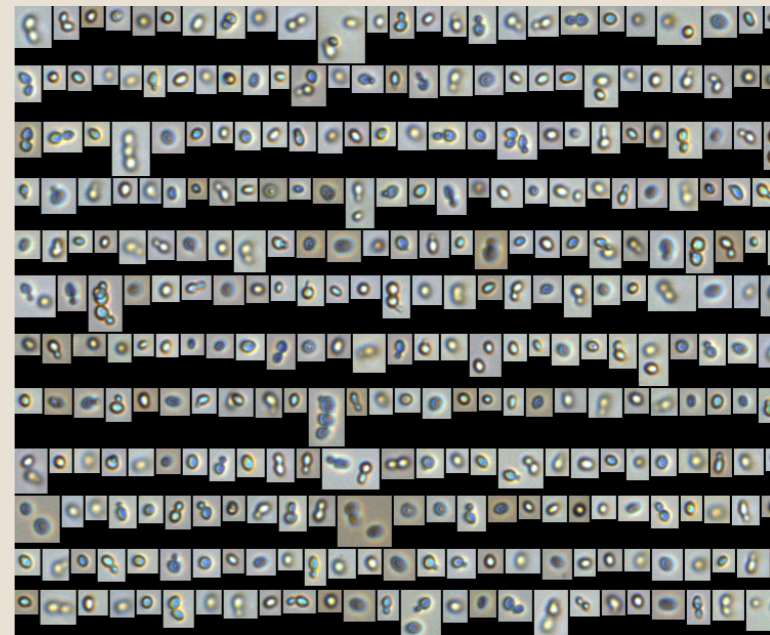
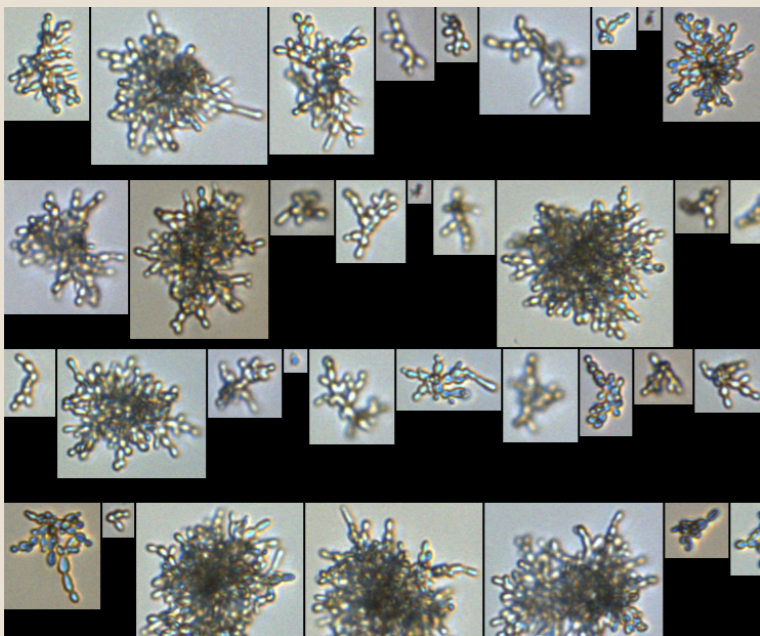


Multicellularity rapidly reverts in structured environments.

Ancestral
Pop. 1

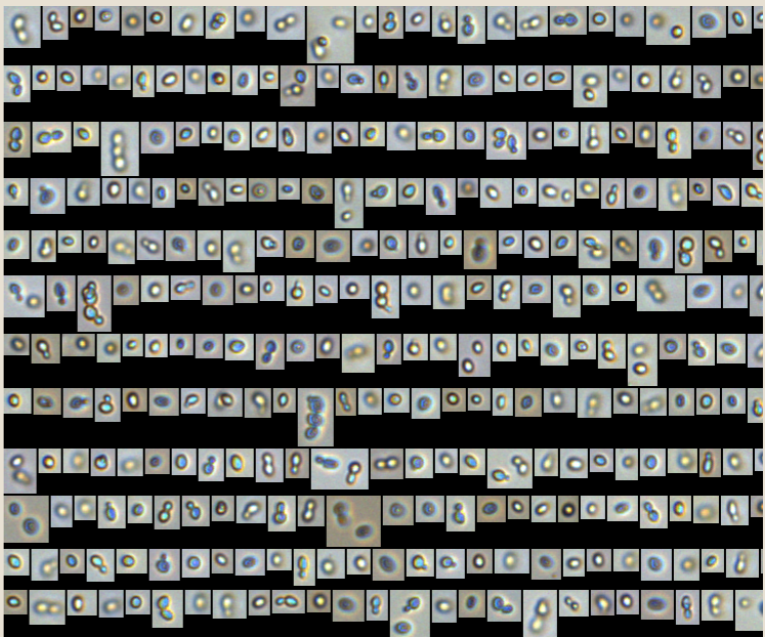
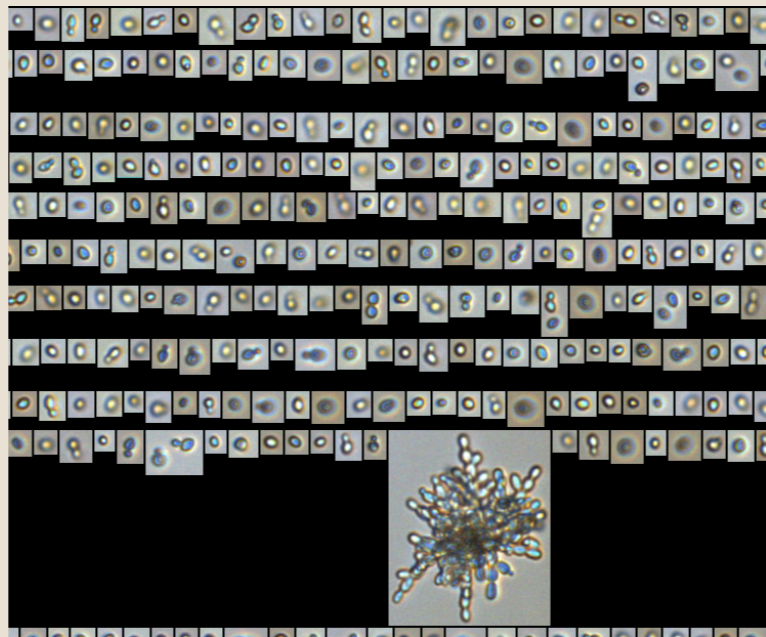
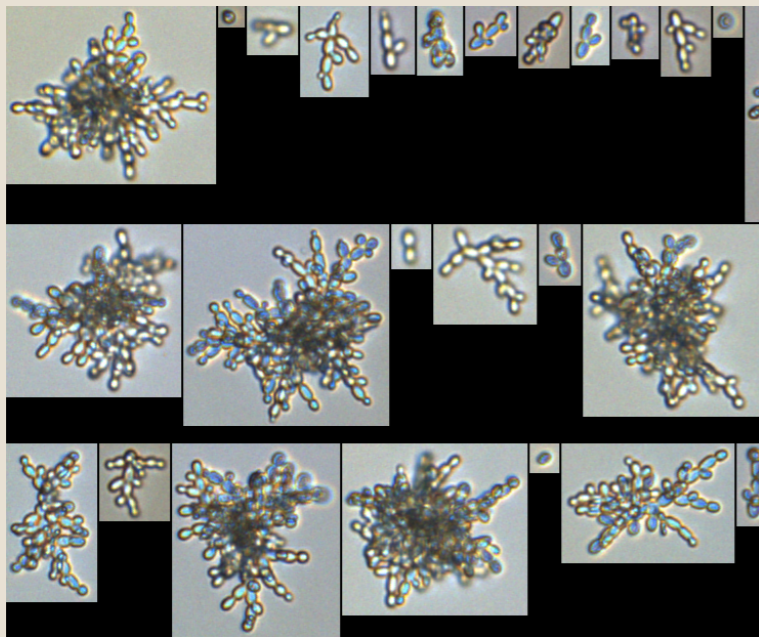


Ancestral
Pop. 4

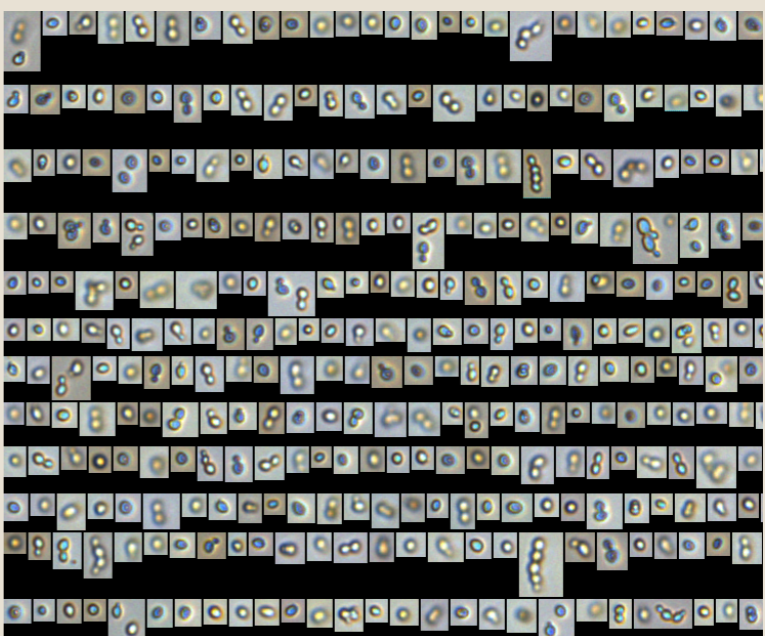
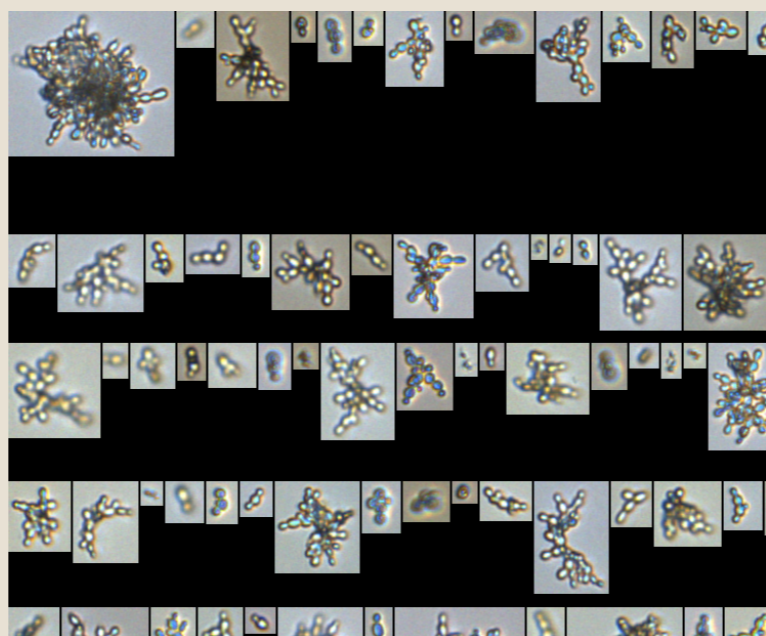
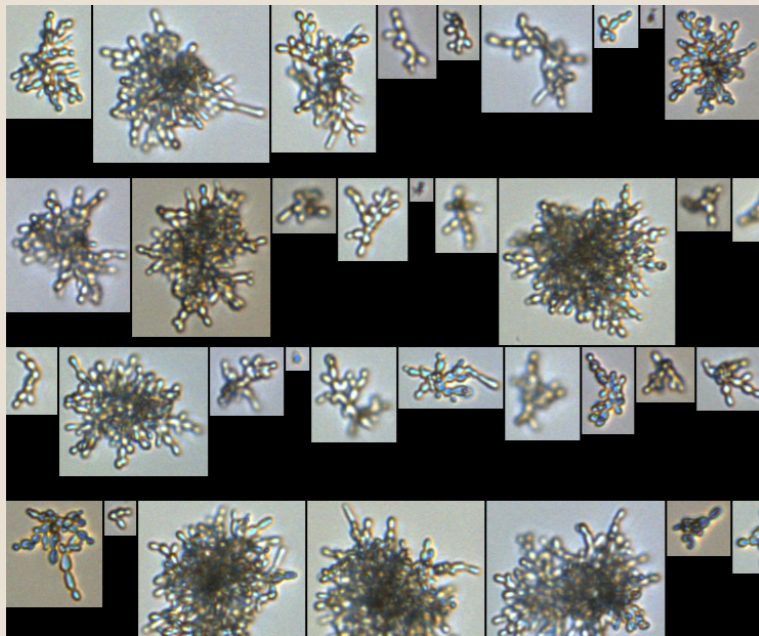


But rate and pattern depend on previous history

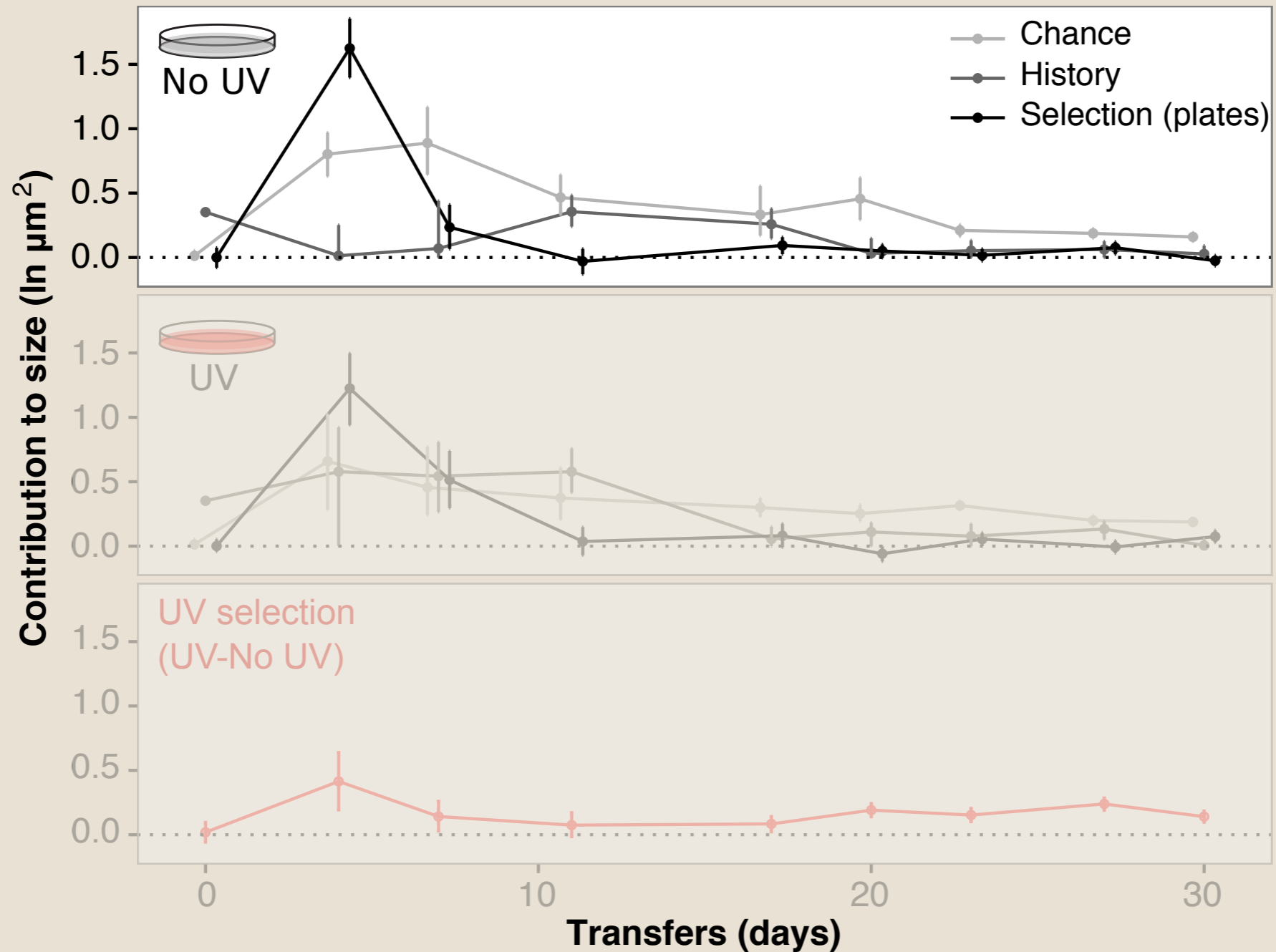
Ancestral
Pop. 1



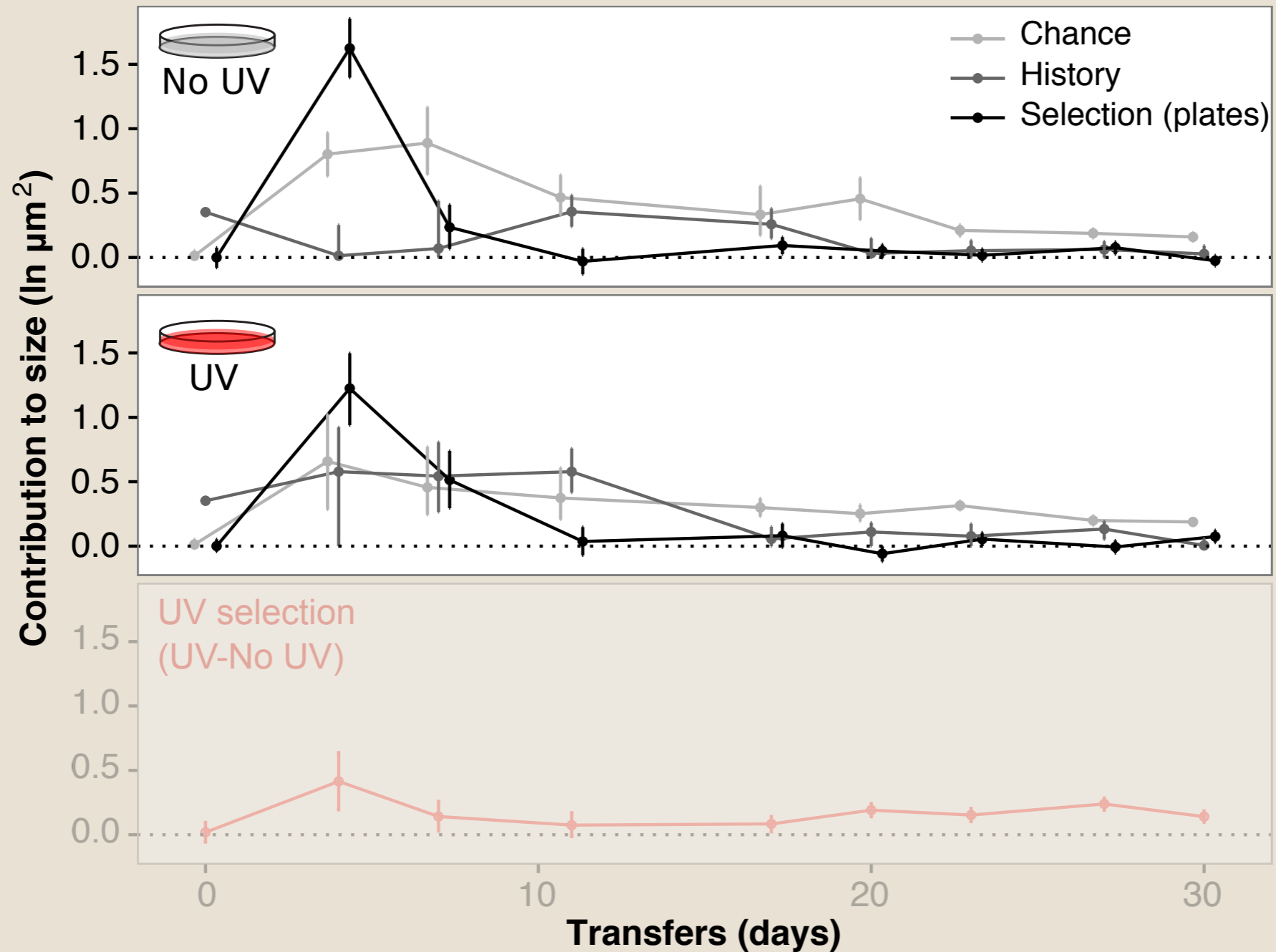
Ancestral
Pop. 4



But rate and pattern depend on previous history



But rate and pattern depend on previous history



But rate and pattern depend on previous history

