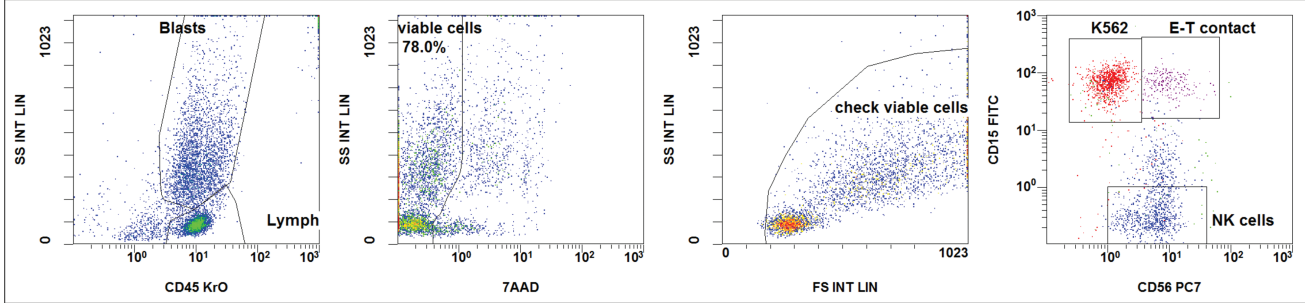


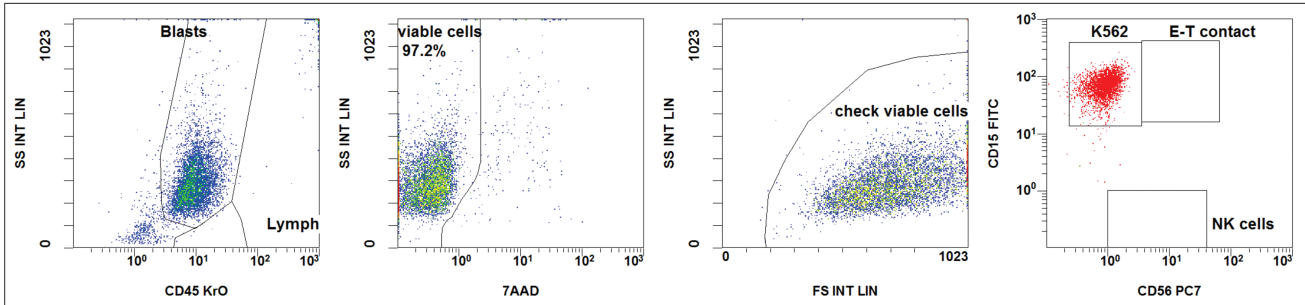
Supplementary Data

Flow cytometry-based cytotoxicity assays: IPCs (day 0)

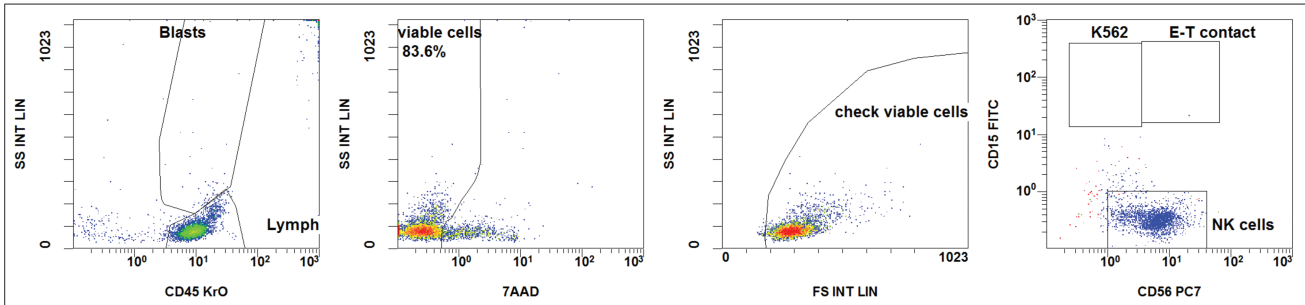
Freshly isolated (non-activated) primary NK cells vs. K562 (4h co-cultivation, E/T ratio 1:1):



Mono-cultured target cell control (K562) after 4h under same conditions:



Mono-cultured effector cell control (NK) after 4h under same conditions:



Supplementary Figure S1. Exemplary gating strategy for all quantifications of NK cell-mediated cytolytic activity against target cells. Different IPCs from process fractions (LA, PF, and EP) were collected and were co-cultured in NK MACS[®] containing 5% FBS for 4 h with K562 at various E/T ratios exemplarily shown for an E/T ratio of 1:1. Afterwards, co- and mono-cultured viable effector and target cells were stained with 7-AAD and mABs to visualize NK (CD56-PC7 and CD45-KO) and K562 cells (CD15-FITC) in a no-wash, single-platform flow cytometric panel (Navios; Beckman Coulter).